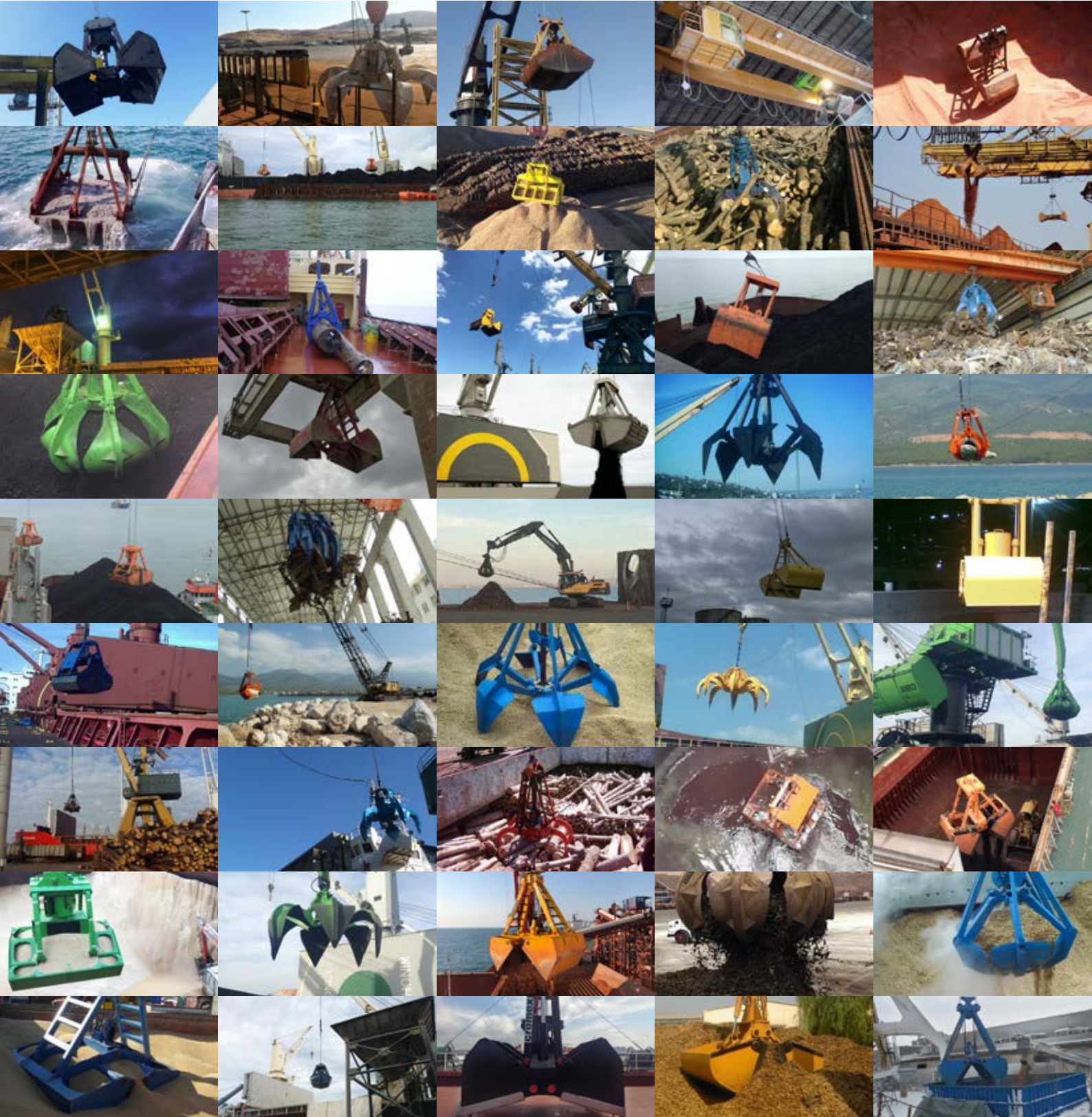


CROMEX®

GRABS



Radio Remote Control Grabs | Mechanical Grabs
Electro-Hydraulic Grabs | Hydraulic Attachments
Grab Spares | Port Equipment

about us

Independence, experience and expertise since 1985 with certified assurance in the sector of professional grabs for cranes and construction machines, is just a few of the characteristics that make Cromex® Grab the obvious choice when it comes to tailored solutions. Our grabs are at world standards and we are proud of owning a modern machine park that is adaptable very fast to technological developments.

We strive for close cooperation with our customers and business associates, based on loyalty and fair play. Rather than being content with short-lived success, we aim for a long-term relationship. Our policy is to be satisfied with our work only when the customer or business associate is satisfied.

Our products can be seen all over ports, cement and steel factories and on ships in Turkey and increasingly in other countries. High-standard technology and reliable products are the result of our respect for the requirements of the market in combination with incremental improvement and implementation of experience gained throughout decades. Our independence enables us to take decisions rapidly and autonomously.

We measure success with mutual satisfaction, as the number of our customers grow and both the products as well as the aftersales services supplied surpass their expectation.

Ozan Özkan, Directing Manager

REMOTE CONTROL GRAB

SINGLE-ROPE, REMOTE CONTROLLED, ON-THE-HOOK, ESPECIALLY DESIGNED FOR VESSEL AND PORT CRANES.

For efficient bulk cargo handling in the maritime sector on Vessel Cranes or Portal Cranes the Radio Remote Controlled Grab is the most preferred type. It is a single-rope and on-the-hook solution, which can work on single drum cranes. The grab can be attached on any type of crane hook and is ready to start working.

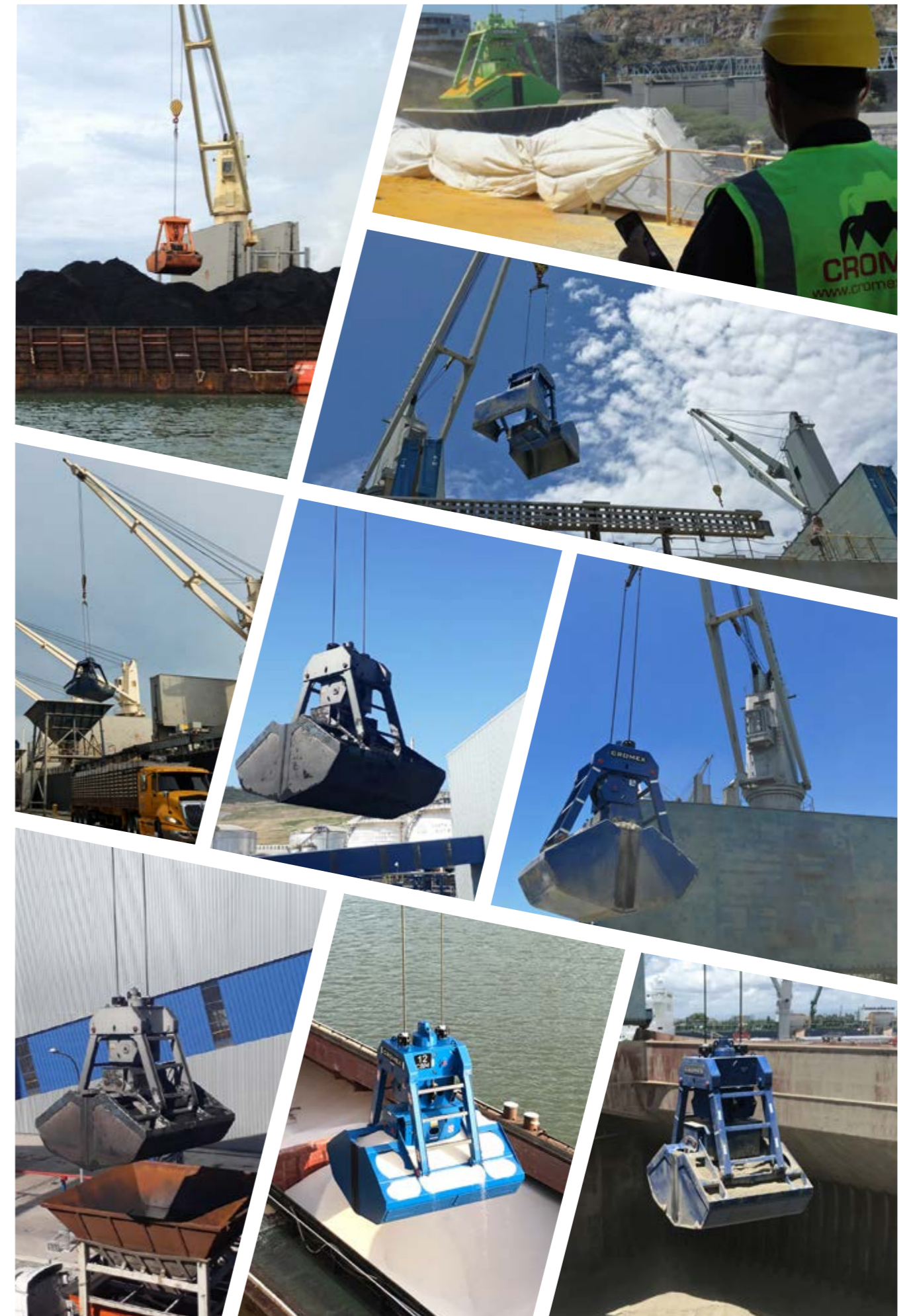
Crane operators only use a remote control transmitter (hand unit) as control. The opening process can be interrupted and continued several times in order to ensure bulk material is unloaded in a controlled manner and with reduced dust emission. And it's easy maintenance is an additional advantage.

The Remote Control Grab does not need any external power source or installations like cable drums or electrical control panel. High quality RC systems are used only. The MAX-CR and MID-CR Series provided by ELFATEK, have special software and design for the Cromex RCC Grab.

- Special Software Program (no additional switchboard)
- Heavy duty, IP65
- Up to 150 m without antenna on receiver and transmitter indoors, outdoor 300 m
- 3+1 functions (Slow Open / Fast Open / Stop (Close Valve) / Automate (Slow Open / Fast Open)
- Battery life saving

RC GRAB

- Radio Remote Controlled
- 3+1 RC functions
- Single-Rope (single drum crane)
- On-The-Hook solution
- Central Cylinder / Robust Structure
- No additional equipment needed
- Less maintenance work
- Easy to operate

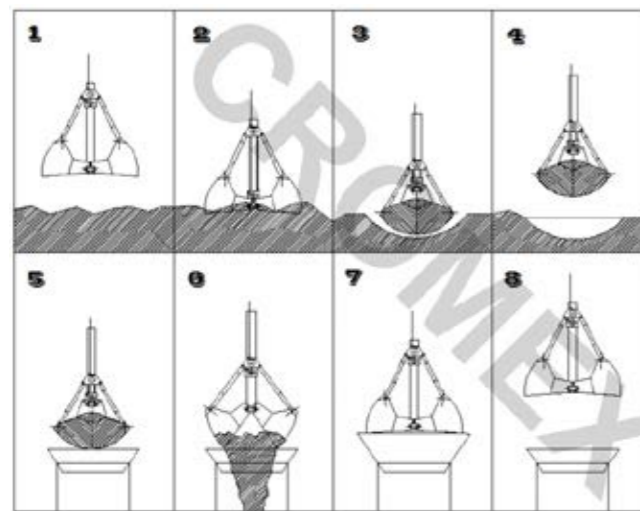


TOUCH-DOWN GRAB

MECHANICAL SINGLE-ROPE | ON-THE-HOOK SOLUTION | TOUCH-DOWN LOCK MECHANISM | FOR SINGLE DRUM CRANES

The Single Rope Grab, also called Touch-Down Grab, is especially designed for cranes with a single cable drum. Also most vessel cranes have single drum cranes, that cannot operate 2- or 4-Rope Grabs. In such case this grab will be a practical On-The-Hook solution. A mechanism on the grab, locks/unlocks the grab to open or close each time it touches the ground. This system is mostly preferred, if there is only one cable available.

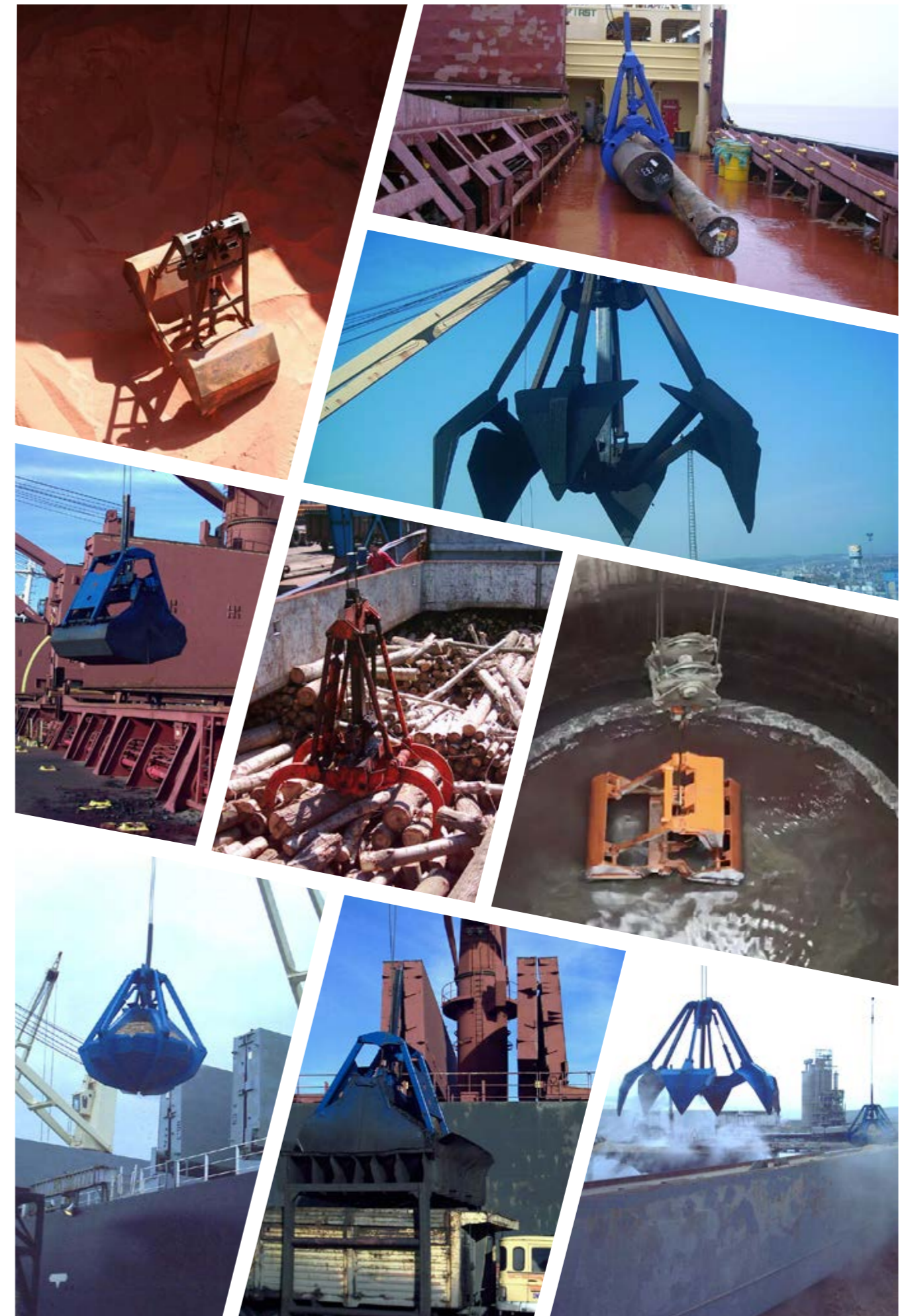
A step by step description of a touch-down mechanism:



- Grab is lowered at open position.
- After grab touches down on the material, the rope from the crane is released until loose.
- The mechanism is **locked** now.
- The grab is pulled up and will close (buckets or tines), filling up with material.
- The loaded grab is taken to destination. At unloading destination (in this case, a hopper), the grab will be lowered to touch-down again until crane rope is loose again. The mechanism is **unlocked** now.
- When lifted, the material will spill out as the grab opens.
- The grab is empty.
- The grab is taken to loading destination

MCSR GRAB

- Mechanical
- Single-Rope (single drum crane)
- On-The-Hook solution
- Touch-Down required to Open/Close the grab
- No additional equipment needed
- Shock-absorbing cylinder
- Less maintenance work
- Easy to operate



MECHANICAL TWO-ROPE GRAB

TWO-ROPE GRABS FOR CRANES WITH TWO CABLE DRUMS

The Mechanical Two-Rope Grab is used to handle various kinds of fine and granular bulk material, mainly with cranes that have two drums (1 Rope to Hold and 1 Rope to Open/Close the grab). The design is tailor-made and depending on customer specified details in order to fit overall weight, required structure, payload ratio, filling degree and digging force as well as environmental regulations at ports or other plants.

MC2R GRAB

- Mechanical Open/Close
- 1 Rope to Hold
- 1 Rope to Open/Close
- For cranes with two cable-drums
- Tailormade design
- Less maintenance work (lubrication only)
- Easy to operate



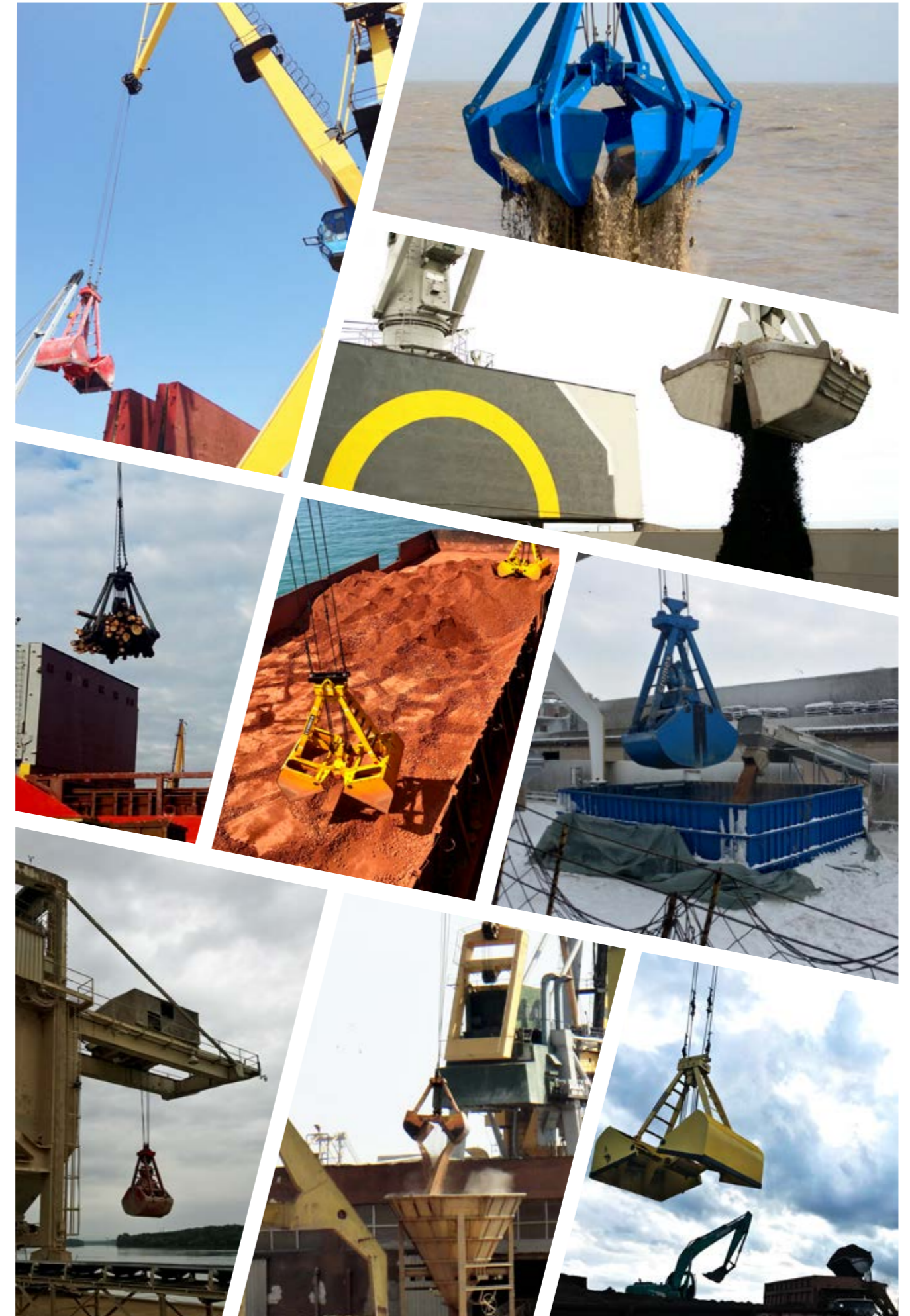
MECHANICAL FOUR-ROPE GRAB

FOUR-ROPE GRABS FOR CRANES WITH TWO CABLE DRUMS

The Mechanical Four-Rope Grab is used to handle various kinds of fine and granular bulk material, mainly with cranes that work with four ropes from two drums (2 Ropes to Hold and 2 Ropes to Open/Close the grab). The design is tailor-made and depending on customer specified details in order to fit overall weight, required structure, payload ratio, filling degree and digging force as well as environmental regulations at ports or other plants.

MC4R GRAB

- Mechanical Open/Close
- 2 Ropes to Hold
- 2 Ropes to Open/Close
- For cranes with two cable-drums
- Tailormade design
- Less maintenance work (lubrication only)
- Easy to operate



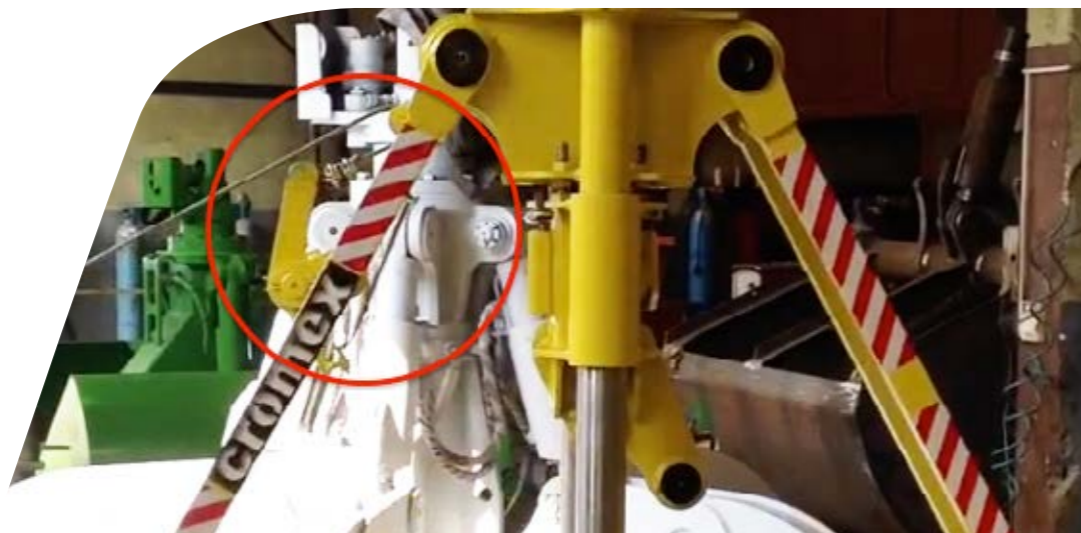
MECHANICAL HAND-TRIPPED GRAB

MECHANICAL, SINGLE-ROPE, HAND-TRIPPED / HAND-PULL

The Mechanical Hand-Tripped Grab (Hand-Pull) has a mechanism, which has one rope for lifting/lowering the grab from the crane and one rope to open the grab manually (pulled by hand) by an additional operator on the ground, pulling it at discharge destination (mid-air opening).

MCHT GRAB

- Mechanical Open/Close
Touch-Down to close
Pull rope to open
- Single-Rope and On-The-Hook solution
(possible to work with single drum crane)
- Less maintenance work (lubrication only)
- No additional equipment needed



HYDRAULIC ATTACHMENT

MANIPULATORS, EXCAVATORS

Hydraulic grabs are specially designed for charging and discharging of bulk materials on cranes with hydraulic system. They are available with open or closed shells/tines depending on the job and the type of material to be handled. Manufactured of high wear resistant steel, all bearings are heavy-duty and sealed for high performance. Cromex Hydraulic Grabs are manufactured with a 360° hydraulic rotor with hydro-motor as standard. We manufacture attachments of your choice to fit almost all available cranes in the market. Hydraulic grabs can be attached to hydraulic machines, excavators or manipulators and connections will be fitting according to the crane specifications. Grabs of the new **SWITCH** Series can both be used on machinery (hydraulic) and on EOT cranes (electro-hydraulic). Please contact our sales office for more information.

HA GRAB

- Hydraulic Grab Design
 - Clamshell
 - Polyp (Orange Peel)
 - Timber Grab
 - Sorting Grab
 - Special Design
- SWITCH Series
 - Machinery / Excavators
 - EOT Cranes



ELECTRO - HYDRAULIC GRAB

ELECTRO-HYDRAULIC

Electro-Hydraulic Grabs are specially designed to handle bulk material with on single-drum cranes. The handling performance of Electro-Hydraulic Grabs, is depending on the supplied electric power, converted by hydraulic pumps on the grab. Therefore, they require electricity from the crane or a source at shore. Also additional equipment and accessories such as cable-reels, pulleys and a control panel must be installed on the vessel. The control panel comes with options to have Radio Remote Control, Foot Pedal Control or both. If on the chartered vessel it is not allowed to mount accessories on the cranes, a 'deck tower' is also a good alternative. Electro-Hydraulic Grabs are mostly preferred if higher closing forces are required or working space has limited draft. For EOT Crane applications with smaller capacities, contact our sales office to get information on the new **SWITCH** Series.

EH GRAB

- High closing forces
- Control Panel
 - Radio Remote Control
 - Foot Pedal
- Robust Structure
- Additional Equipment
 - Control Panel
 - Cable-Reel
 - Deck Tower



PORT EQUIPMENT

Port Hopper

Specifically designed for unloading bulk cargo into trucks or bagging, our port hoppers can be manufactured upto 100 cbm and alternatively designed to be modular for transportation at all capacities. Depending on demand extra features like PLC control sytem for sensor weighters, light and sound warnings, wheels, environmental dust covers, hydraulic or mechanical flaps and other special requirements can be added.

Deck Tower (Automatic Cable-Reel)

If on the chartered vessel it is not allowed to mount accessories on the cranes, the deck tower is a good alternative. Placing this device on deck and connecting it to a Electro-Hydraulic Grab will be enough to start operating. Deck Towers guide the electrical power cable from the vessel or generator to the grab and keep the cable under constant tension. It is possible to work with either power from the vessel or a powersource from shore. Operation can be with Remote Control Panel and/or Foot Pedal.

Mobile Shiploader

The mobile shiploading conveyors can be adapted to all types of products. On demand, they can be optimized for the handling of agricultural products such as cereals and maize. Or it can be used to load various minerals, rubble, wood, and de-icing salts and silica sands. The conveyors vary in length from 6 to 55 m and operate with an electric motor. In addition to the motor, you can choose the feed and type of product outlet (swivel spout, swanneck). These characteristics enable them to achieve high performances in the handling of bulk products. The output can vary from 60 to 400 tons per hour depending upon the type of bulk product transported and the version of bulk conveyor selected. Performances that you can harness for various uses. You can optimize the loading of a truck, boat, barge or even containers. They can also be useful to you for filling storage bins and storage buildings.

Overheight Frame

The Overheight Frame is a great tool which improves productivity and time efficiency during operations when handling Open Top Containers, Flat Racks and Over-Sized Cargo in general. At the same time it increases significantly the security of the stevedores in those operations. Types available are Mechanical, Semi-Automatic, Fully-Automatic (electrical).



INSPECTION, REPAIR AND ASSEMBLY

RESPOND FAST, REACH WORLDWIDE, MASTER THE SITUATION

Assembly And Installation

Sometimes you might need your grabs to be delivered disassembled. The reasons could be: high transportation costs, the lack of equipment for overheight cargo at delivery destination or you want us to come for training and commissioning. In any of these cases, our team is available for assembly and installation.

Commissioning And Training

In addition we can train your staff if they are unfamiliar with the provided equipment. Both theoretical and practical training can be provided during commissioning or separately on demand.

Inspection and Repair

Continuity of operations is critical. Operational disruptions are costly, not only for shipowners but also for other key players in the supply chain. Whether it's a Cromex Grab or another brand, to help you out, we are always available to assist vessels and ports worldwide 24 hours a day, 365 days a year.







Ayse Cavus Caddesi No: 17/1 - 34740 Suadiye - Istanbul / Turkey
E-mail: info@cromexgrab.com / Phone: +90 216 415 47 00
Fax: +90 216 417 47 65 / Web: www.cromexgrab.com



CONVEY

CONVEYOR SYSTEMS

Convey® brand symbolizes the determined cooperation of two successful companies. The journey had begun with developing industrial automation projects. Afterwards, we continued to design applications to serve production and delivery sectors. In time, our solutions evolved on conveying systems for a wide range of sectors such as machine manufacturers, logistics, delivery, food, health and more. Major ratio of our products are being produced tailor made by skilled workmanship to meet our customer's needs.

Our Principles

Aim

To fully understand the customer needs while respecting expectations. The main purpose for us, is finding the best method for providing the most efficient solution to complete the project. We spend a significant amount of time implementing cutting-edge technologies to support our customers work. Our main motivation is to provide value-added services for them to reach their goals.

Integrity and Equity

According to us, the term "acquisition" can only be meaningful when both producer and the consumer have a mutual agreement on the success level of a completed project. We are proud to be a reliable partner of our customers and determined to progress more in the near future.

Commitment for Quality

From the smallest screw to the biggest part of a material while we are shaping our products, we are strictly dedicated to reveal the maximum quality on the finished product.

Our Business

Logistics (Telescopic Conveyors-Weighing Conveyors and Sorter Systems including barcode scan and label applicators).

Food (Stainless steel formed chassis with Modular Belt Conveyors. Elevator and Weighing Conveyors).

Quarry-Rock Pit-Tunnel (Heavy Duty Conveyors)

Poultry Sector (Chicken dismembering lines)

Liquid Filling Machines

According to the current technological improvements, we adapt our solutions compatible with the Industry v.4.0 standards..

Warehousing & Distribution

Comprehensible definition of warehousing can be explained as “a well organized area space for the procreative storage and material handling purposes”. The distribution centre term also covers the same meaning. Planning, organization and efficiency are the key features of these so called places.





Food processing is any method used to turn fresh foods into food products. This can involve one or a combination of the following: washing, chopping, pasteurizing, freezing, fermenting, packaging and many more.



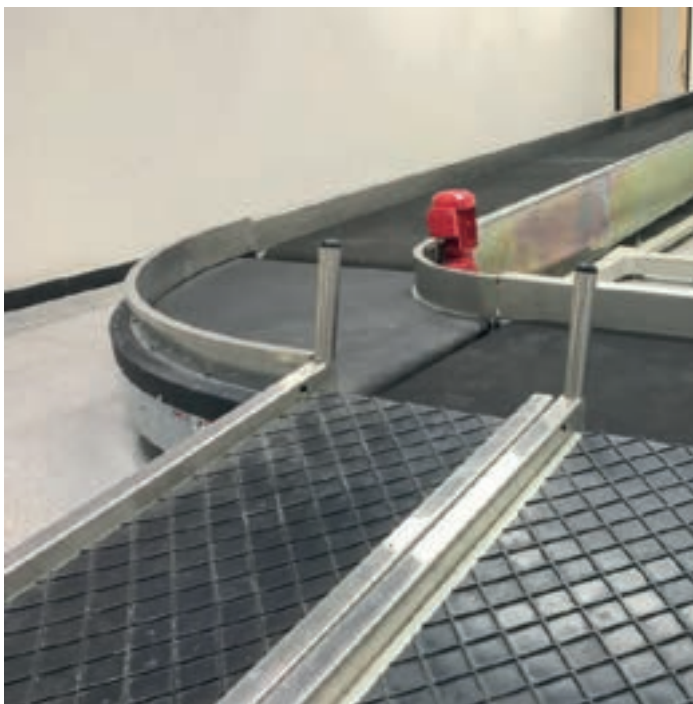


Mining is the extraction of valuable minerals or other geological materials from the earth, usually from an ore body, lode, vein, seam, reef or placer deposit. These deposits form a mineralized package that is of economic interest to the miner. Excavation is the process of moving earth, rock or other materials with tools, equipment or explosives. It also includes trenching, wall shafts, tunnelling and underground. It is the preliminary activity of the construction project.



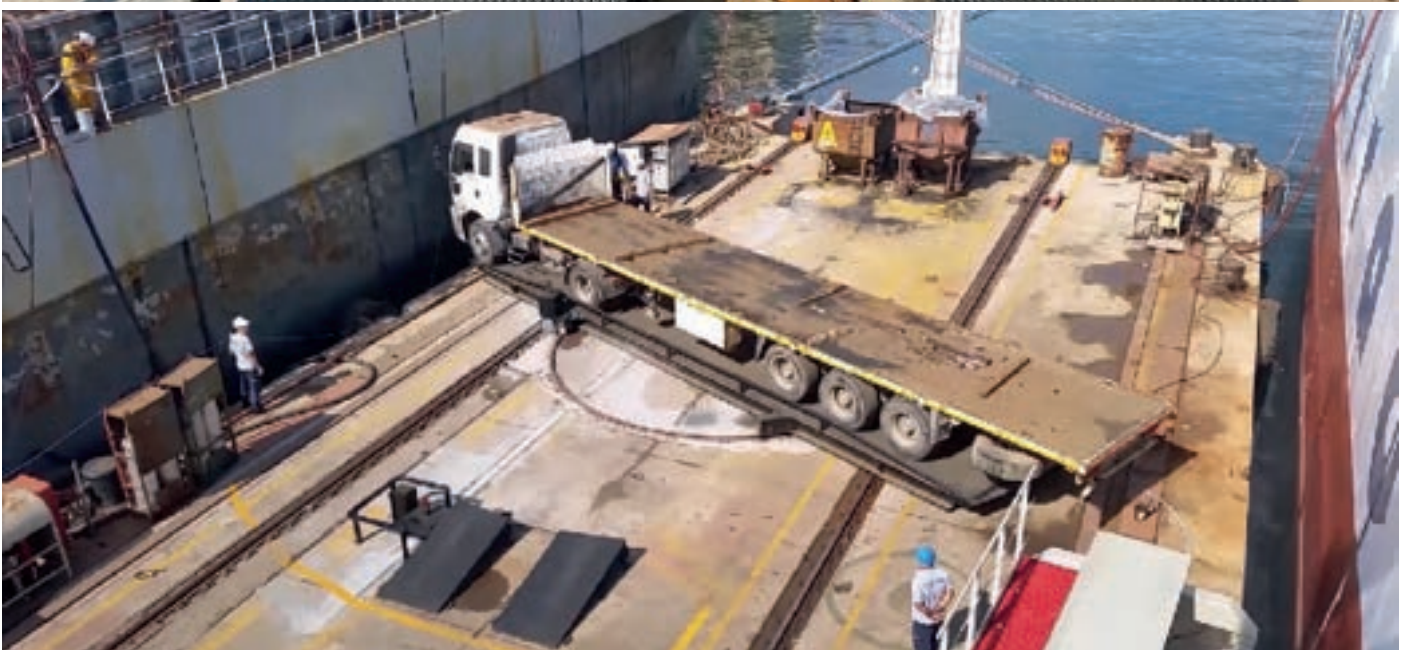


An airport is an aerodrome with extended facilities, mostly for commercial air transport. Airports often have facilities to store and maintain aircraft, and a control tower. An airport consists of a landing area, which comprises an aerially accessible open space including at least one operationally active surface such as a runway for a plane to take off or a helipad, and often includes adjacent utility buildings such as control towers, hangars and terminals. Larger airports may have airport aprons, taxiway bridges, air traffic control centres, passenger facilities such as restaurants and lounges, and emergency services.





A port is a maritime commercial facility which may comprise one or more wharves where ships may dock to load and discharge passengers and cargo. Whereas early ports tended to be just simple harbours, modern ports tend to be multimodal distribution hubs, with transport links using sea, river, canal, road, rail and air routes. Successful ports are located to optimize access to an active hinterland. Ideally, a port will grant easy navigation to ships, and will give shelter from wind and waves.

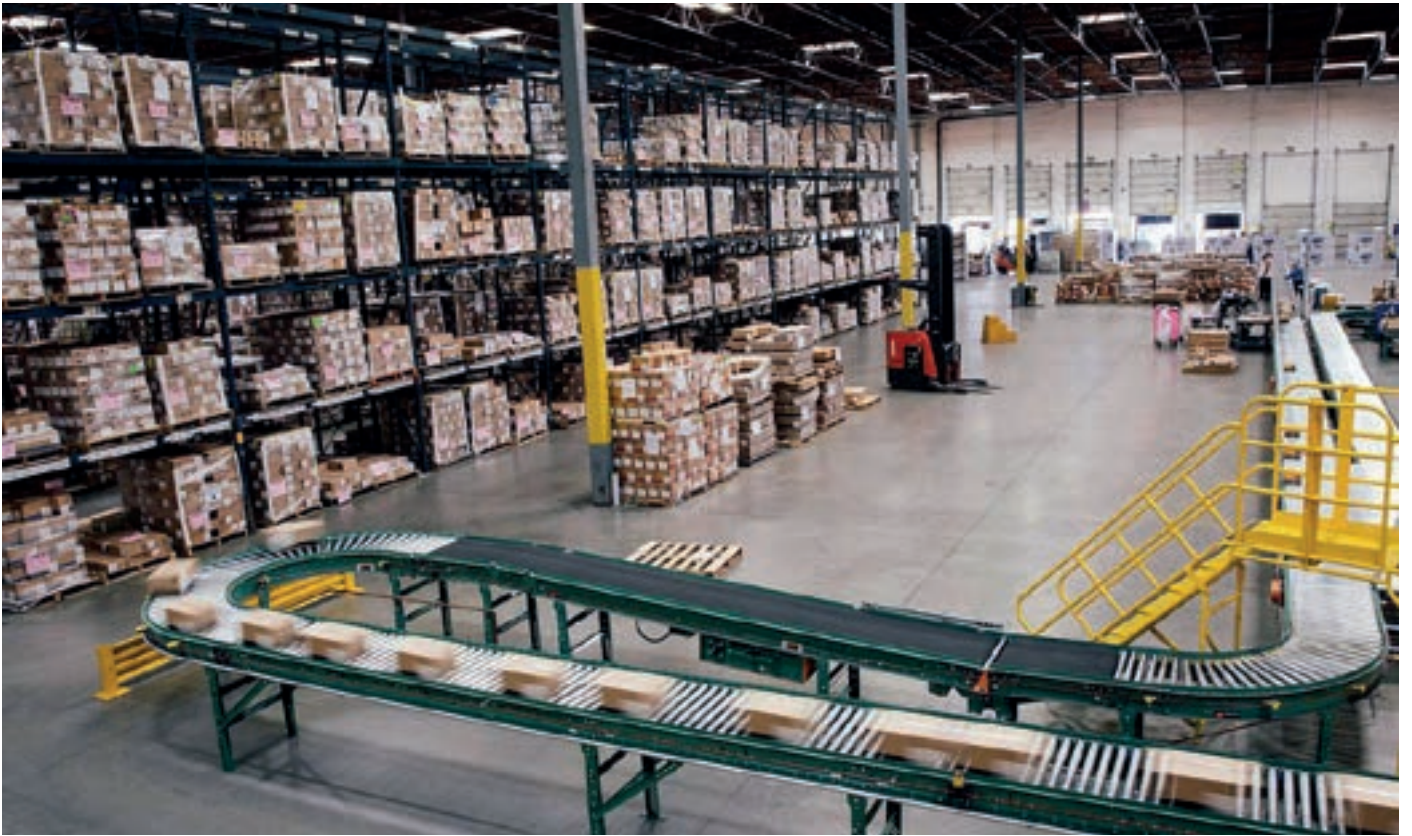




Courier Parcel and Express Mail

A parcel is a package bearing the name and address of the recipient in order to be routed through a courier to the recipient. The size can currently range from a postcard to a shipping container. Express mail is an accelerated mail delivery service for which the customer pays a surcharge and receives faster delivery. Express mail is a service for domestic and international mail, and is in most nations governed by the country's own postal administration.





Industrial Production

Industrial production is a measure of output of the industrial sector of the economy. The industrial sector includes manufacturing, mining, and utilities.






References

CONVEY® has the primary target to consider the customer expectations and respects them at all conditions. The majority of our effort and time has always been spent to fully understand the customer's job and searching for the best possible solution.

Afterwards, when planning is complete, the phase comes which CONVEY® is already good at, the manufacturing. We believe that, considering a company as successful can only be possible by satisfaction of the customers. Preserving this succession with an established long term commercial relationship is the greatest contentment for us.

Below are the some of our customers that we define as business partners which we are still developing active projects with.

The background of the entire page is a repeating pattern of the word "CONVEY" in various colors (purple, blue, green, yellow, orange, red, pink, brown) and orientations (horizontal and vertical). The text is set against a white background with a slight perspective effect.

CONVEY

Web: www.convey.com.tr • Phone : +(90) 216 415 47 00 • E-Mail : export@convey.com.tr





Albars Engineering and Crane
Equipments Industry and Trading Inc.

*Albars Mühendislik ve Vinç
Ekipmanları San. ve Tic. A.Ş.*

Tepeören Mahallesi Özvatan Caddesi Araylar Sanayi Sitesi
No:9/A4 Tuzla/İstanbul

+90 216 304 29 47 albars@albars.com.tr



You can visit our web site by scanning QR code

QR kodu taratarak web sitemizi ziyaret edebilirsiniz.

www.albars.com.tr

About Us / Hakkımızda

We provide reliable hoisting and other crane components for most industries. Our in-house design capabilities, internally regulated technology and production, and customer orientated management allow us to offer best options for products to meet market demands and individual needs.

Albars Mühendislik ve Vinç Ekipmanları sektöründe uzun yıllar boyunca çalışmış olan deneyimli kadrosuyla müşterilerine en uygun fiyata maksimum kaliteye sahip ürünler sunmayı amaç edinmiştir. Albars Mühendislik bünyesinde tüm imalatlar uluslararası FEM ve DIN normlarına uygun olarak yapılmaktadır. İmza attığımız her projede doğru mühendislik yaklaşımıyla, kalite anlayışımızdan ödün vermeden yolumuza devam etmekteyiz.



1

Industrial Cranes

Single and double girder overhead cranes, gantry cranes and various types of jib cranes are designed and produced by our company in accordance with international FEM and DIN norms.

Endüstriyel Vinçler

Tek ve çift kirişli tavan vinçleri, portal vinçler ve bayrak vinçler firmamız tarafından FEM ve DIN normlarına uygun olarak dizayn ve imal edilmektedir.

2

Below the Hook Lifting Attachments

Various types of below the hook attachments are designed and produced by our company such as Coil tongs, C hooks, pipe lifters and block lifters.

Kanca Altı Ataşmanlar

Bobin tongları, C kancalar, boru ve blok kaldırma aparatları gibi çeşitli kanca altı ataşmanları firmamız tarafından asarlanmakta ve üretilmektedir.

3

Factory Equipments

Load elevators, in-plant transfer cars, coil tilting machines are designed and manufactured by our company.

Fabrika Ekipmanları

Yük asansörleri, fabrika içi transfer arabaları, bobin devirme makinaları firmamız tarafından dizayn ve imal edilmektedir.

4

Aircraft Maintenance Solutions

Fancase turning tools, battery operated height adjusted transfer cars, various types of handling tools are produced within our company.

Uçak Bakım Çözümleri

Fancase döndürme makinaları, akülü yükseklik ayarlı transfer arabaları, çok çeşitli tip ve kapasitede taşıma ve kaldırma ekipmanları firmamız tarafından üretilmektedir.

We do produce our products in-house on the base of global material sourcing, thus giving us advantageous flexibility. Our product range completes the individual need of crane production and service companies and offers.

Albars Mühendislik ve Vinç Ekipmanları sektöründe uzun yıllar boyunca çalışmış olan deneyimli kadrosuyla müşterilerine en uygun fiyata maksimum kaliteye sahip ürünler sunmayı amaç edinmiştir.



INDUSTRIAL CRANES ENDÜSTRİYEL VİNÇLER

- Double and Single Girder Overhead Cranes
Çift ve Tek Kirişli Gezer Köprü Tavan Vinçleri
- Gantry and Semi Gantry Crane
Portal ve Yarı Portal Vinçler
- Slewing Trolley Cranes
Döner Arabalı Vinçler
- Monorail Cranes
Monoray Vinçler
- Flag Cranes
Bayrak Vinçler
- Crane Components
Vinç Komponentleri

Double and Single Girder Overhead Cranes / Çift ve Tek Kirişli Gezer Köprü Tavan Vinçleri



Gantry and Semi Gantry Crane / Portal ve Yarı Portal Vinçler



Slewing Trolley Cranes / Döner Arabalı Vinçler



Flag Cranes / Bayrak Vinçler



Monorail Cranes / Monoray Vinçler



Crane Components / Vinç Komponentleri



CRANE APPARATUS VİNÇ KOMPONENTLERİ

- Steel Coil and Plate Tongue
Çelik Rulo ve Levha Tongu
- C Hook
C Kanca
- Roll Loading Apparatus Into Container
Konteyner İçine Rulo Yükleme Aparatları
- Automatic and Manual Spreader
Otomatik ve Manuel Spreader
- Concrete Barrier Lifting Apparatus
Beton Bariyer Kaldırma Aparatları
- Pipe Lifters
Boru Kaldırma Aparatları
- Various load-bearing sleepers
Muhtelif Yük Taşıma Traversleri
- Product-Specific Apparatus Designs
Ürüne Özel Aparat Tasarımları
- Scissor lift apparatus
Makaslı Kaldırma Aparatı

Steel Coil and Plate Tongue / Çelik Rulo ve Levha Tongu



C Hook / C Kanca



Roll Loading Apparatus Into Container / Konteyner İine Rulo Yikleme Aparatları



Concrete Barrier Lifting Apparatus / Beton Bariyer Kaldırma Aparatları



Automatic and Manual Spreader / Otomatik ve Manuel Spreader



Pipe Lifters / Boru Kaldırma Aparatları



Various load-bearing sleepers / Muhtelif Yük Taşıma Traversleri



Scissor lift apparatus / Makaslı Kaldırma Aparatı



Product-Specific Apparatus Designs / Ürüne Özel Aparat Tasarımları



FACTORY EQUIPMENT *FABRİKA EKİPMANLARI*

- Transfer Cars
Transfer Arabaları
- Freight Elevator
Yük Asansörleri

Transfer Cars / *Transfer Arabaları*



Freight Elevator / *Yük Asansörleri*



AIRCRAFT MAINTENANCE SOLUTIONS

UÇAK BAKIM ÇÖZÜMLERİ

- Aircraft engine fancase turning machine
Uçak Motoru Fancase Döndürme Makinası
- Battery powered motor support pedestals
Akülü Motor Destek Pedestallar
- Battery powered motor stand carrier and riser transfer trolleys
Akülü Transfer Arabaları
- Various part holder tool manufacturing
Muhtelif Parça Tutucu Tool İmalatları

Aircraft engine fancase turning machine / Uçak Motoru Fancase Döndürme Makinası



Battery powered motor support pedestals / Akülü Motor Destek Pedestallar





A series of horizontal dashed lines for taking notes.



Tepeören Mahallesi Özvatan
Caddesi Araylar Sanayi Sitesi
No:9/A4 Tuzla/İstanbul

+90 216 304 29 47
albars@albars.com.tr