



2023

CATALOG

Introduction & Product List

BEE-N COMPANY PHARMA

BEE-N Company provides pharmaceuticals products in Ankara Türkiye. It provides a wide range of branded and generic medicines, hospital consumables products, health and wellness products, test kits, contrast media, examination of latex and nitrile gloves, AFI products and personal care products. The aim of the company is to offer supreme service for every single customer to meet their needs and demands in a short time. We are pleased to sell and supply specialized pharmaceutical items in different parts of the world.

PRODUCTS PROVIDED

- Nitrile Examination Gloves
- Latex Examination Gloves
- Sterile Surgical Gloves
- Contrast Media
- Generic over the counter drugs
- Generic prescription drugs
- Branded over the counter drugs
- Branded prescription drugs
- Basic medical equipment
- Health and wellness products
- Personal care products

EXAMINATION GLOVES

Welcome to Best Gloves World

BEE-N Company is the Turkey distributor of one the world's biggest manufacturer of medical gloves.

High Quality - Best Prices



Nitrile Examination
Gloves



Powder-Free Latex
Examination Gloves



Sterile Latex
Gloves



Nitrile and Latex
Gloves

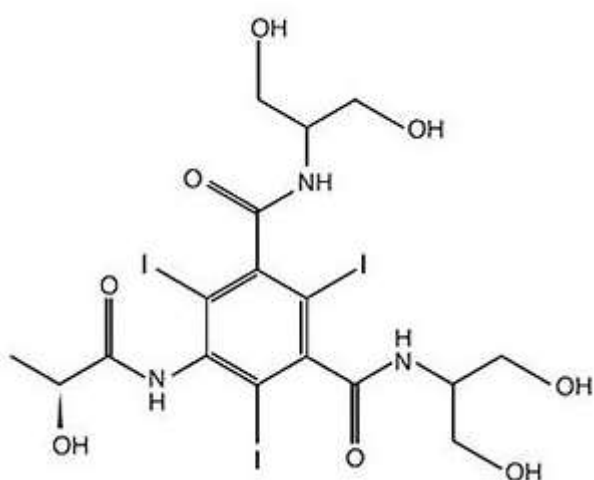
LATEX NON-POWDERED AND NITRILE GLOVES

Quality Features

- Softness and shape provide excellent comfort
- Beaded cuff enhances donning and prevent rollback
- High tensile strength and elongation
- Manufactured using 100% Nitrile (Acrylonitrile Butadiene/NBR)
- Protects against a wide range of chemicals as compared to natural rubber latex of the same thickness.
- Superior strength with better puncture resistance.
- Ambidextrous and straight fingers.
- Free from dirt marks, oil stains, embedded foreign particles, coagulum etc.
- Completely free of talc.
- Non-Allergic.
- Polymer Coated for easy donning.
- Finger textured for great performance in all conditions. Glove Colour
- Blue, Violet Blue, Dark Blue, Bluple, White
- Or as per customer specification Glove Sizes
- XS, S, M, L, XL
- Marking and labelling as regulatory and customer requirement Product Specifications • Material – Synthetic Nitrile (Acrylonitrile Butadiene or NBR)
- Length – 240 mm +/- 5mm • Weight – 3.5 to 6.0g +/- 0.3g per piece • Cuff Style – Beaded
- Surface – Finger Textured • AQL – 1 - 2.5
- Shelf life - 5 years Quality Standards

- *Conforms to ASTM D6319 and EN 455 standards.*
- *Manufactured under QRS (GMP) and*
- *ISO 13485:2016 Quality Management System*
- *An ISO 9001: 2015 company, CE certified.*
- *USFDA, 510K Certified*

Contrast Media



Description White or almost white powder Complies with USP	Free aromatic amine $\leq 0.02\%$	Limit of free iodide $\leq 0.001\%$	Heavy metals $\leq 0.001\%$
Specific optical rotation -4.6° to -5.2° ($t=20^\circ\text{C}; \lambda=436\text{nm}$)	Free iodine The toluene layer shows no red color.	Free acid or alkali NMT 1.37ml of 0.01N sodium hydroxide or NMT 0.75ml of 0.01N Hydrochloric acid.	Related compounds $\leq 0.25\%$
Residual solvent Ethanol NMT 5000ppm	Packing Double PE bags, Preserve in well-closed, light-resistant containers.	Packing Size 10Kg(Other pack sizes may be available on request)	Loss on drying $\leq 0.5\%$
Chemical Name (S)-N,N'-bis[2-Hydroxy-1-(hydroxymethyl)ethyl]-2,4,6-triiodo-5-lactamidoisophthalamide	Molecular Formula $\text{C}_{17}\text{H}_{22}\text{I}_3\text{N}_3\text{O}_8$	Molecular Weight 777.09	Residue on ignition $\leq 0.1\%$

Medical Product Catalogue

Touch the Future.



ŞİRINGALAR SYRINGES

3P ŞİRINGALAR 3P SYRINGES	10
50 ML ŞİRINGALAR 50 ML SYRINGES	11
İNSÜLİN ENJEKTÖRLERİ INSULIN SYRINGES	12
AŞI ŞİRINGALARI VACCINE SYRINGES	13
LUER LOCK ŞİRINGALAR LUER LOCK SYRINGES	14
DENTAL ŞİRINGALAR DENTAL SYRINGES	16
VETERİNER ŞİRINGALARI VETERINARY SYRINGES	17
HİPODERMİK İĞNELER HYPODERMIC NEEDLES	18
KORUMALI İÇNE UCU PROTECTED NEEDLE TIP	19

KAN GAZI ENJEKTÖRLERİ BLOOD GAS SYRINGES

KURU LİTYUM HEPARİN DRY LITHIUM HEPARİN	22
PÜLVERİZE LİTYUM HEPARİN PULVERIZED LITHIUM HEPARİN	23

SERUM SETLERİ KAN VERME SETLERİ INFUSION SETS BLOOD TRANSFUSION SETS

SERUM SETLERİ INFUSION SETS	26
KAN VERME SETLERİ BLOOD TRANSFUSION SETS	27



OFTADAY Eye Drops 0.15% 5ml

Active ingredients:

Brimonidine tartrate 1.5 mg/ml

Indication:

Antiglaucoma



TIMOSOPT Eye Drops 2%+0.5% 5ml

Active ingredients:

Dorzolamide hydrochloride 22.25/ml

Timolol maleate 6.83mg/ml

Indication:

Antiglaucoma



GLOCOMISINE Eye Drops %1 5ml

Active ingredient:

Brinzolamide 10mg/1ml

Indication:

Antiglaucoma, miotics, carbonic anhydrase inhibitors.



GLOCOMISINE-T Eye Drops 5ml

Active ingredients:t

Brinzolamide 10mg/ml

Timolol 5 mg/ml (6.8 mg as timolol maleate)

Indication:

Antiglaucoma, miotics, carbonic anhydrase inhibitors.



TOBRADAY Eye Drops 0.3% 5ml

Active ingredient:

Tobramycin 3.00mg/ml

Indication:

Antiinfectives



METAZOSIN Ear & Eye Drops 0.1% 5ml

Active ingredient:

Dexamethasone sodium phosphate 1.0 mg/ml

Indication:

Ophthalmologics and otologic preparations, corticosteroids



LEVOMISINE Ear & Eye Drops 0.5% 5ml

Active ingredient:

Levofloxacin hemihydrate 256.15 mg (250mg levofloxacin equivalent)

Indication:

Quinolone antibacterials, fluoroquinolones



OLTAFEN Gel 45 gr 5%

Active ingredient:

Diclofenac sodium 50 mg/g

Indication:

NSAİ Cream



NAZOSIN Noise Spray

Active ingredient:

Beclomethasone dipropionate 100mcg/Dose

Indication:

Nasal decongestant-Corticosteroids for topical use



DERMOSINE Cream 0.05%

Active ingredient:

0.05% clobetasol 17-propionate.

Indication:

Corticosteroids



ALLSCAR Skin Care Gel

Allscar is a silicone gel used in the treatment of wounds and acne scars.

- Silicone, Allantoin, Vitamin E, Tea Tree Oil (TTO)
- Prevention and treatment of all scars and keloids



ALLSCAR SHEET Silicone Gel Sheet

Silicone gel sheets are used to treat red and raised scars.

Allscar Sheet silicone gel layer is effective on old and new squeezers.



MELADAY SUNCARE Sunscreen Cream

Sunscreen Cream with anti-dark spot & moisturizing actives

- Treatment of all skin blemishes and uneven skin tone.
- High moisturizing and antiaging effect
- Anti-DNA damage and photo-aging effect



GENJEL PLUS Skin Care Cream

Genjel plus is a product that accelerates wound healing with its pure Type 1 collagen content that can be used in all open wound treatments.

- Collagen (Type I Soluble)
- Panthenol
- Glycerin
- Propolis



ROSADAY AR Cream

Anti-Redness Cream with copper and moisturizing actives

- Rosacea
- Acne Rosacea

Ingredients:

Endothelyol, Sopholiance S, Unimoist U-125, Copper Sulphate

BABYSOIN Serum Physiological



20 Vials of nasal solution in a disposable container Physiological serum

0.9% Sodium Chloride

VIT&DAY Vitamin C

Vitamin C 20 Effervescent tablet

- Vitamin C 1000mg
- Selenium 50µg
- Zinc 25mg
- Q-10 25mg



VIT&DAY Sambucus

Black Elderberry Extract 20 Effervescent tablet

- Black Elderberry Extract 150mg
- Selenium 50µg
- Zinc 25mg
- Q-10 25mg



STAG 9000 Delay Spray

Stag 9000 Delay Spray 20ml

Active ingredients:

Contains 100 mg of lidocaine in 1 ml. Contains 10% lidocaine.



FRESHIES Natural Breath Cleaner

Freshies is produced to remove unwanted bad breath.

Made from mint, thyme and parsley extracts





TANDEX FLEXI Interdental Brushes

TANDEX FLEXI Original is a series of interdental brushes recommended by dentists and dental hygienists. These brushes are an important part of daily dental care. This series is available in 11 different sizes.

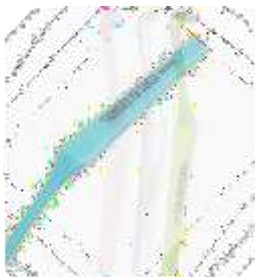
TANDEX FLEXI UltraSoft is especially suited for ortho-patients pre-surgery. The UltraSoft series is available in 4 different sizes - you can therefore always find the sizes that fit exactly to your tooth spaces.



TANDEX FLEXI MAX Interdental Brushes

TANDEX FLEXI Max is a specially designed interdental brush with an ergonomic grip. The flexible grip makes it easy to reach even interdental spaces in the back of the mouth.

TANDEX FLEXI Max gives an efficient and gentle treatment for both teeth and gums. With 5 different sizes there are brushes to suit small interdental spaces or more complex bridge and implant spaces.



TANDEX SOLO Toothbrushes

TANDEX SOLO is a renowned series of special brushes for tooth- and gum dental care.

TANDEX SOLO has been developed and designed in cooperation with dentists and has for decades proven its worth by helping oral dental care for many people.



TANDEX ADVANCE V-SHAPE Toothbrushes

TANDEX ADVANCE is a popular toothbrush with the special V-shaped brush. This shape makes it easier to brush around e.g. braces.

There are two Advance models: Soft and Medium.



TANDEX Special brushes

TANDEX SOFTTOUCH Ultra Soft: The special thing about this toothbrush is that it has an Ultra Soft brush that is extra gentle on the gums.

TANDEX Tongue Brush: It will reduce the coatings on the tongue.

TANDEX Tongue Scraper: It will reduce the coatings on the tongue.

TANDEX Denture Brush: The special thing about this toothbrush is that it is specifically developed for dentures.



TANDEX CLASSIC Adults Toothbrushes

TANDEX CLASSIC series' design with the slightly broader handle provides a good grip where the brush head also is flush with the shaft at the same time. This makes it easier to hold the brush against teeth and gums without adding too much pressure. The brushes are positioned so you need to rotate the brush.

- Medium-Hard
- Hard
- Medium
- Soft



TANDEX CLASSIC Children Toothbrushes

TANDEX CLASSIC Children series have age appropriate brush head design for best result.

- Baby 0-3 Age
- Kids 4-7 Age
- Junior 8-12 Age



TANDEX Implant Kit

A kit for effective care of dental implants. It contains:

- A Tandex SoftTouch toothbrush, for delicate and sensitive cleaning in the first few days after surgery
- A Tandex Advance Soft toothbrush – for when the gingiva has healed
- A Tandex SOLO UltraSoft –for cleaning in and around the interdental spaces
- Four FLEXI UltraSoft interdental brushes
- A Tandex Gel for reducing plaque formation, gingival inflammation and the incidence of caries.



TANDEX Baby Safety Toothbrush

TANDEX BABAY SAFETY Toothbrush is specially designe to ensure your child's safety at the introduction of dental care. It has extra soft bristles that fell pleasant in the child's mouth and to remove plaque as soon as the first teeth appear.

It contains no PVC.



TANDEX Toothpicks & Floss

TANDEX FLOSI Dental Floss

TANDEX FLOSI Flosser CHARCOAL

TANDEX PICKI Plastic Triangular

TANDEX PICKI Soft PHD 1.1 LEMON

BURNICORT %0,055 NASAL SPRAY



Drug Substance:

Each 1 ml nasal spray contains 550 mcg of triamcinolone acetonide as an active ingredient.

Therapeutic Indications:

It is indicated for the treatment of symptoms of perineal rhinitis and seasonal allergic rhinitis.

Posology and Usage:

Posology:

Adults and +12 years old children:

The recommended starting dose is 220 micrograms, applied as 2 sprays in each nostril once daily. Once symptoms are under control, patients can continue with 110 micrograms (one spray in each nostril once a day).

Some patients may experience healing in symptoms during the first days of treatment.

However, several days of treatment may be needed for maximum benefit.

6-12 years children:

The recommended dose is 110 micrograms given as 1 spray in each nostril once daily. For those with more severe symptoms, a dose of 220 micrograms can be used. However, when the symptoms are under control, the treatment of the patients should be continued with the lowest effective dose.

Application frequency and duration:

Some patients may experience healing in symptoms during the first days of treatment.

However, several days of treatment may be needed for maximum benefit.

Usage:

Buricort is taken through the nose only and should be used regularly for optimal effectiveness.

Contraindications:

Patients with hypersensitivity to triamcinolone acetonide or any of the excipients in BURNICORT.

DERMILA %2,5 + %2,5 CREME**Drug Substance:**

Each gram of creme contains 25 mg of lidocaine and 25 mg of prilocaine.

Therapeutic Indications:

- For needle punctures and external (superficial) surgical procedures where topical skin anesthesia is required
- For the purpose of external (superficial) anesthesia before external (superficial) surgical procedures and cleaning in leg ulcers, for example, cleaning of fibrin, pur and necrosis parts.
- For external (superficial) anesthesia of the genital mucosa.

Posology and Usage:**Posology/Application frequency and****duration: Adults:**

Healty Skin	Dosage And Usage	Duration of Usage
Needle punctures, e.g. insertion of an intravenous catheter, blood collection	Approximately 2 g/10cm ² is applied to the skin as a thick layer and closed dressing is done.	hour; 5 hours max
Minor external (superficial) surgical interventions; e.g. curettage of the epidermis	1,5-2g/10cm ² is applied to the skin as a thick layer and closed dressing is done.	hour; 5 hours max
Superficial surgical procedures in large areas in the hospital	1,5-2g/10cm ² is applied to the skin as a thick layer and closed	hour; 5 hours max

Leg Ulcers

Approximately 1-2 g/10 cm² is applied to clean leg ulcers. The creme is applied to the ulcer surface as a thick layer, not exceeding 10 g in each application. Closed dressing is done. Application time: At least 30 minutes.

In leg ulcers in tissues where penetration is difficult, the application time can be extended to 60 minutes. The ulcer cleansing process should be initiated within 10 minutes of removal of the cream. Lidocaine/prilocaine cream was applied 15 times for 1-2 months, during which time there was no decrease in its effect or increase in local reactions.

Genital Use

Skin:

It is used before the injection of local anesthetics.

Men: 1 g/10 cm². It is applied to the skin in a thick layer. Application time: 15 minutes

Women: 1-2 g/10 cm². A thick layer is applied to the skin. Application time: 60 minutes

Mucosa

In the surgical treatment of genital warts (condyloma) and before the injection of local anesthetics; about 5-10 g depending on the width of the field. The entire area, including the mucosal folds, should be covered with cream. Close dressing is not required.

Application time: 5-10 minutes.

Surgery should be initiated immediately after removal of the cream.

People who apply or remove the cream frequently should avoid contact to avoid sensitivity.

Usage:

Applied topically.

Contraindications:

Patients with hypersensitivity to lidocaine, prilocaine, amide type local anesthetics or any of the excipients in DERMILA.

Premature babies (gestational age less than 37 weeks).

EXIDERM HYDRO %2 EMULSION



Drug Substance:

Each ml of emulsion contains 20 mg of urea.

Therapeutic Indications:

Due to its moisturizing and emollient effect, it is used in the treatment of ichthyosis and hyperkeratosis skin diseases (skin diseases accompanied by atopic eczema, xeroderma, asteatosis and other chronic dry skin conditions). It is also used in topical corticosteroid therapy, intermittent therapy with corticosteroids.

Posology and Usage:

Posology/Application frequency and duration:

Unless recommended otherwise by your doctor, it is used by rubbing it on the diseased area 2- 3 times a day.

Usage:

It is only applied topically by rubbing it on the skin. Shake before use.

Contraindications:

- If you are allergic or hypersensitive to urea or any component of EXCIDERM HYDRO,
- If there is a wound or open wound,
- It is contraindicated in infants as it has not been systematically investigated for skin irritation.

Exiderm Lipo %4 Emulsion



Drug Substance:

Each ml of emulsion contains 40 mg of urea.

Therapeutic Indications:

Due to its moisturizing and emollient effect, it is used in the treatment of ichthyosis and hyperkeratosis skin diseases (skin diseases accompanied by atopic eczema, xeroderma, asteatosis and other chronic dry skin conditions). It is also used together with corticosteroids in the intermittent treatment method in topical corticosteroid therapy.

Posology and Usage:

Posology/Application frequency and duration:

Unless recommended otherwise by your doctor, it is used by rubbing it on the diseased area 2- 3 times a day.

Usage:

It is only applied topically by rubbing it on the skin. Shake before use.

Contraindications:

- If you are allergic or hypersensitive to urea or any component of EXCIDERM HYDRO,
- If there is a wound or open wound,
- It is contraindicated in infants as it has not been systematically investigated for skin irritation.

GUAFEN 1,5MG/5ML + 66,5MG/5ML SYRUP



Drug Substance:

Each 5 ml syrup contains 1.5 mg terbutaline sulfate and 66.5 mg guaifenesin (guaiacol glyceryl ether).

Therapeutic Indications:

It is relaxing drugs used as symptom relief by reducing bronchoconstriction in asthma. It should not be used as a control drug.

It is used to reduce symptoms and as rescue medication in COPD. It is not preferred in regular treatment.

Posology and Usage:

Posology/Application frequency and duration:

GUAFEN is used for the maintenance treatment of asthma and other lung diseases in which bronchospasm and secretion are complications. When used as maintenance therapy, the patient should also receive optimal anti-inflammatory therapy such as inhaled corticosteroids, leukotriene receptor antagonists.

Adults and +12 years old children:

3 - 4.5 mg (10 - 15 mL) 3 times a day.

6-12 years old children:

0.075 mg (0.25 mL)/kg body weigh; 3 times a day: The dose of 15 ml 3 times a day should not be exceeded.

Usage:

Applied Orally.

Contraindications:

GUAFEN is contraindicated in the following cases:

- Patients with hypersensitivity to terbutaline sulfate, guaifenesin or any of the excipients in GUAFEN,
- Women with pregnancy and childbearing potential who do not use any contraceptive method,
- 0-6 years old children.

Piraldyne Oral Solution**Drug Substance:**

In 1 ml as active substance: Rhei extract contains 0.05 g Salicylic acid, 0.01 g and diluted alcohol.

Indications:

It is used in acute and chronic oral inflammations of the mouth and gingival tissues, aphthous stomatitis, periodontitis, gingivitis, teething disorders and denture dents.

Usage and Dosage:

A few times a day for an optimal effect; into the inflamed area after meals.

It should be applied with the brush and nothing should be eaten, drunk or rinsed for half an hour.

Warning and Cautions:

Piraldyne oral solution is for topical use. Because it contains salicylic acid,

Systemic toxic symptoms may occur when applied to a large area in excessive amounts and for a long time. May cause skin dryness and irritation. It should not be applied to the eyes and genital mucous membranes. Accidental contact, If it occurs, it should be washed with water for 15 minutes. When first applied, Rhei extract is on the teeth and mucous membrane and creates light stains on prostheses. These spots disappear in a short time. When Piraldyne oral solution is used for the first time, it may cause a slight burning in the mucosa and a feeling of needle penetration. Short

After a while, these complaints disappear and relief is felt in the mucosa. If different infections occur with its use, you should consult your doctor.

Usage in pregnancy and nursing mothers:

(Pregnancy category C) In pregnant and lactating mothers It should not be used as there is no research on its use.

Side Effects and Adverse Effects:

Salicylic acid in the composition of Piraldyne oral solution is an irritant. is substance. It can be absorbed through the skin with topical application. Dizziness, hearing loss, weakness, nausea, vomiting, diarrhea, Salicylate toxicity, which is characterized by psychic changes, can be seen very rarely. Salicylic acid concentration, since it is very low, the possibility of irritation and other side effects is much less.

Contraindications:

- People with hypersensitivity to the substances in its composition
- It should not be used by people who are allergic to acids, especially salicylic.

Method and Content of Commercial Presentation:

In 10 ml bottles with applicator.

BEE-N COMPANY PHARMA PARTNERS

BEE-N Company Pharma has reliable producers/partners from different countries such as South Korea, India and Germany in order to supply unavailable products in the market for customers

Sources

Pharmaceutical products are supplied from the most reliable manufacturers. Below is a list of some of the biggest companies we work with to supply products:

- Glaxo Smith Kline
- Novartis
- Johnson & Johnson
- Pfizer
- Lunchtbek
- Abbott
- Sanofi
- Roche
- Merck & Co
- Bayer
- Gilead Scienc

Export Destinations

The list of some export destinations of Pharma Expo is given below:

- Somalia
- Saudi Arabia
- Qatar
- Malta
- Kosova
- Thailand
- UK
- Tanzania
- Cyprus
- Tajikistan
- Libya
- Albania
- Yemen
- Iraq
- Georgia
- Brazil
- KKTC
- Germany

CONTACT US

OFFICE-1 ADDRESS

MEHMET AKIF ERSOY MAH. 266 CAD. NO: 7C/7

06200 YENIMAHALLE| ANKARA TURKEY

OFFICE-2 ADDRESS

IS MERKEZI, ESKIŞEHİR YOLU NO:6 KAT 12, ARMADA

06520 SOGUTOZU | ANKARA TURKEY

MOBILE PHONE: 00 90 (532) 786 78 68OFFICE

OFFICE PHONE: 0090 (312) 332 27 55

PHARMACEUTICAL PRODUCTS WAREHOUSE

BEE-N COMPANY & APEX PHARMA

Gazi, Yavuz Kanat Sk. No:34, 06560 Inimically/Ankara

Serhat, 1333. Cd. No: 46, 06378 İvedik Osb/Yenimahalle/Ankara

E-mail: export@beencompany.com

E-mail: info@beencompany.com