



When all you need is everything; it is good to know there is one company that you can count on to deliver complete solutions and services. From Dental, Industry, Chemistry we develop better processes everyday - all backed by unrivaled customer service and support - we through our experience help you to raise game and increase your competitive edge.

**ARMA**  
DENTAL

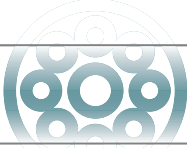





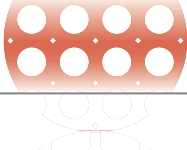







the better way

# Timeline

- 1995** ▶ Company Set-up
- 1995** ▶ Acrylic Teeth Manufacturing
- 2003** ▶ Teeth Manufacturing Stopped.!
- 2003** ▶ Acrylic Teeth Mold R&D Start
- 2006** ▶ Acrylic Teeth Mold is Released
- 2010** ▶ Injection Method for Acrylic Teeth Manufacturing
- 2012** ▶ Acrylic Teeth Press is Released
- 2014** ▶ Crust Trimming & Robotic Mounting R&D Start
- 2014** ▶ Digital Dental Lab Set-up
- 2016** ▶ Crust Trimming & Robotic Mounting is Released - Patented
  - Dosage Machine is Released
  - Printing & Waxing Machine is Released
- 2017** ▶ Material Formulation Acquire
- 2017** ▶ Turn-key Teeth Factory Set-up Service Announcement
- 2019** ▶ PMMA Block Machine is Released
- 2019** ▶ Dental Clinic Set-up
- 2019** ▶ Arma Chemicals Company Set-up
- 2020** ▶ 3D Printing Resin R&D Start
  - Dental Acrylics R&D Start
- 2022** ▶ 3D Printing Resins are Released
  - Dental Acrylics are Released
  - Composite Material for Teeth Manufacturing will be Released

## Some Success Stories

- ▶ Finished More Than 60 Projects
- ▶ Milled More Than 15.000 Moulds
- ▶ Developed Thousands of Teeth Models
- ▶ New Players Created for Acrylic Teeth Manufacturing
- ▶ First Company Giving Complete Service for Acrylic Teeth Manufacturing

	 ArmaMold		4
	 ArmaMach		12
	 TeethFactory		24
	 ArmaResin		32
	 ArmaShoe		52
	 ArmaAcryl		56
	 ArmaJewel		60

# content



ArmaMold

# The Better Way Of Making Moulds



## **World's Most Experienced Engineers & Technicians In His/Her Field**

We are designing teeth everyday from 2006. We also produce the molds for the designed teeth from 2006.

We have the most experienced team in our company regarding the teeth design and production teeth mold.

## **World's Best Reverse Engineering / CAD / CAM Solutions**

We follow the new technologies and improvements in our field. We keep ourselves up to date. As a result we provide best solutions for our customers.

## **Everyday Same Precision**

We make our manufacturing in a special, climatized production center. We use HSM series CNC milling machines. Our milling precision is under 5 micron. Even years later we can renew a mold part or produce a copy part for that mold.

## **Customized Design & Moulds**

We make product development as to our customer requirements. The customers makes market analysis we develop the best product for them.

## **In-house Mould Check with Customer Parameters**

Every mould is tested in our company with customer's parameters. For us, the success is to get desired results with customer's production conditions. We also consult them to be more effective.

## **World's Biggest Teeth Mold Production Center**

We are manufacturing teeth molds everyday. Up to now, more than 10.000 molds we produced. Our monthly production capacity is 300 mold parts / month.

# UNIQUE DESIGN

## **Use our advanced design techniques**

A lot of new models coming to market. Texturised labial surfaces, different occlusal angles, advanced layers are new trends. We are proud that many premium brands designed by our engineers. Why don't you have a new brand with trending concepts for premium teeth market?

## **Produce & sell premium teeth**

Target Premium  
Teeth Market  
with Your  
Unique Design





### Perfect Digitalisation

We have high end scanning systems to digitalize your master / hand-made models.

### Perfection Texturize + SKYN Works

Occlusal Sharpening



Cleaning Faults

Correcting Edges

### Correction

### Advanced Layering

With our advanced design techniques, we are able to make totally same layers with your masters.



### Model Check

You see the final product produced with your material to be sure about everything.

### Confidential Data Storage

We store your confidential teeth datas in our special server system. Third parties can not be reached to these master models.

# LIBRARY MODELS

## **Cost Effective Solution**

Arma Dental offers wide range of tooth library from well-known brands. Take advantage of well known, accepted library models. Search your market's famous brands and we manufacture moulds for you.

## **Start production in a short-term**

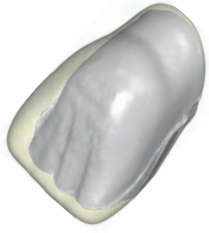


Widen Your Product Range with  
Well-known Models



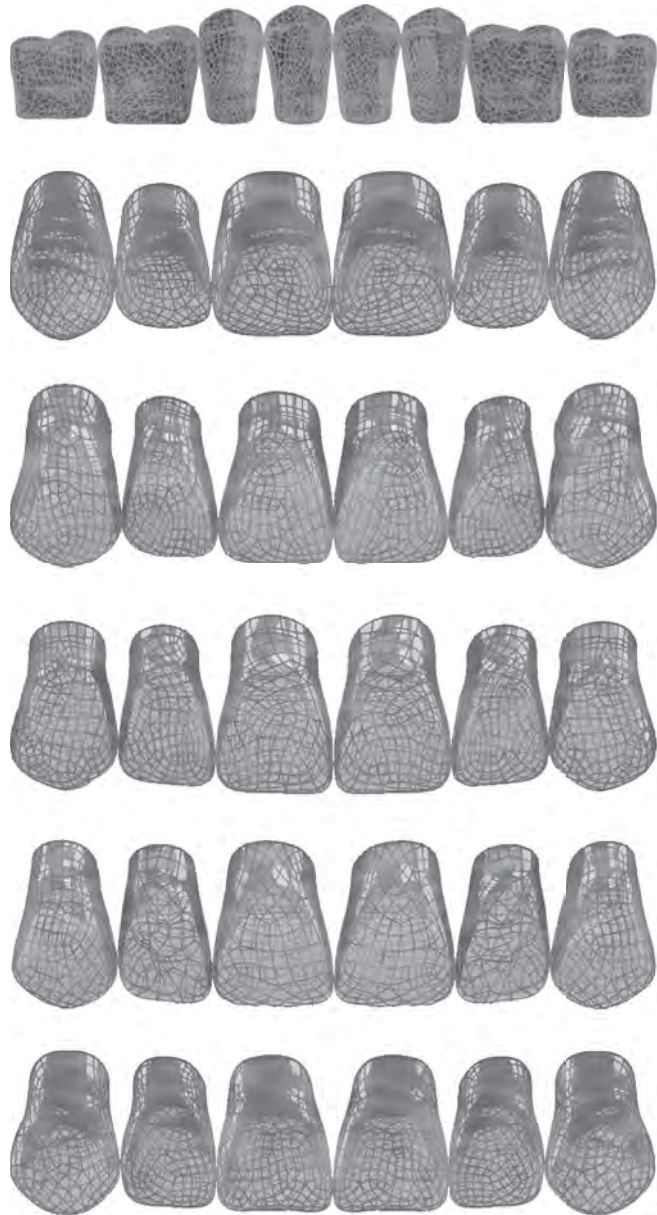
## Ready Design

Adapted layers provide perfect color match.



## Ready Mould Layout

We directly produce moulds with ready to use mould layouts.



# TOOTH MOULD

## Best Teeth Mould Ever!

> 10 Years Life

No Hand Finishing!

Easy to Take Out Teeth

### Monoblock Steel

We are machining moulds from mono- block steel. Heat treated patented steel provides long life.

### Mould Layout

Circular, rectangle, square mould shapes are available.

### Pins

Each mould has its unique pin positions. Operator can not close wrong mould parts.

### Heat Transfer

Mono-block moulds have better heat transfer than old electroform / cast moulds. This helps quicker and homogenous polymerization.



## For Best Mould; Best Machining Technologies

### Everyday Same Precision

Thanks to our climatized production environment, we are able to mill the moulds at same precision for years.

If a part is damaged or should be renewed after years; it is possible to make without renewing other parts of the mould.

### Arma Surface Technology

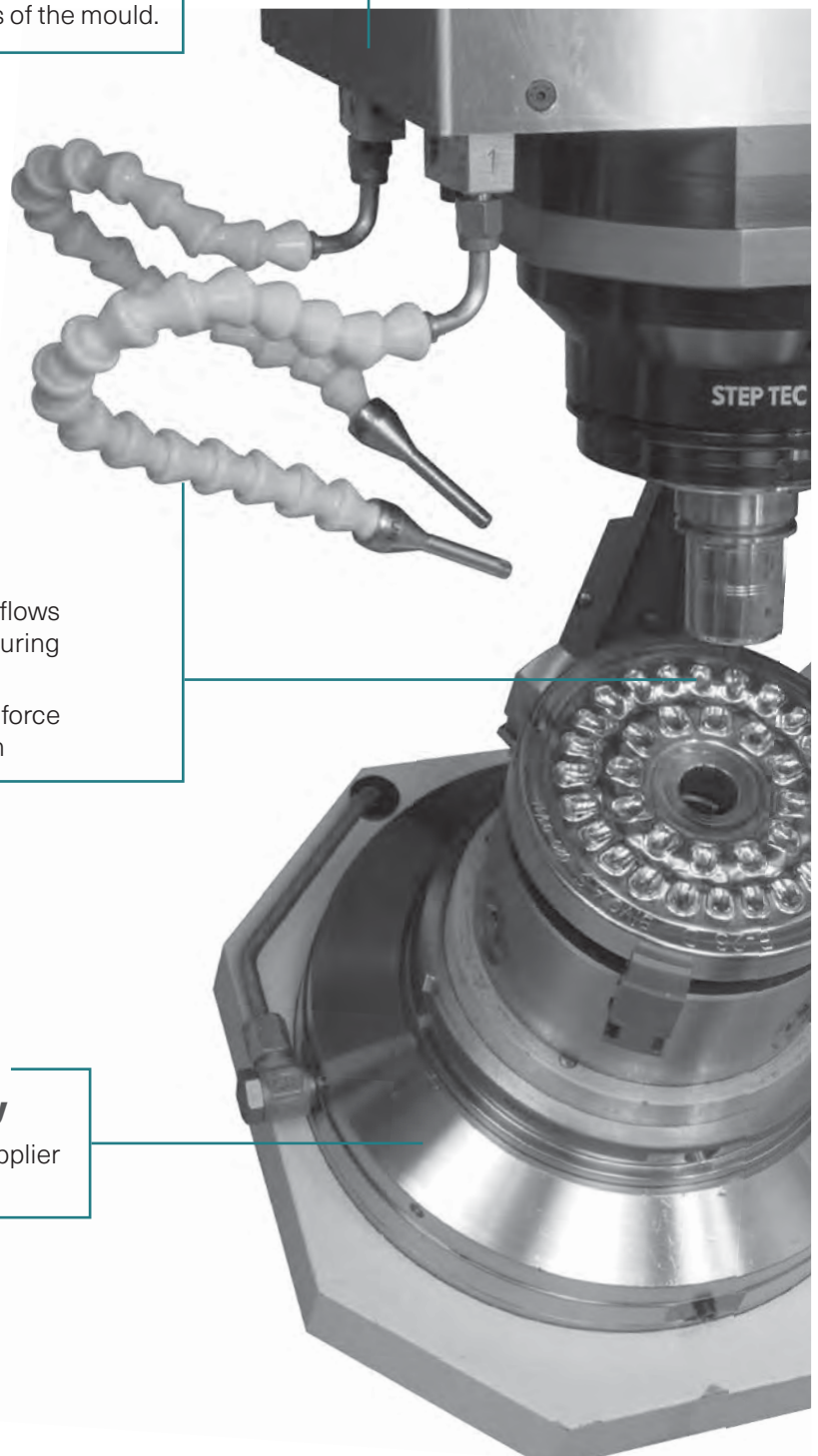
With our optimized surface technology; you clean excess material easily.

With optimized grooving area, material flows perfectly inside to cavities. No missing tooth during production.

With optimized grooving area and perfect force distribution, you get very thin crust. < 0,08 mm

### Huge Production Capacity

We are the biggest teeth mould supplier around the world.





# The Better Way Of Acrylic Teeth Production



## **World's Most Experienced Engineers & Technicians In His/Her Field**

We are designing teeth everyday from 2006. We also produce the molds for those teeth from 2006.

We have the most experienced team in our company regarding the teeth manufacturing machines design and production.

## **Machine Design Softwares & Production Hardwares**

We follow the new technologies and improvements in our field. We keep ourselves up to date. As a result we provide best service to our customers.

## **Most Efficient Machines For Teeth Manufacturing**

As to our huge experience about acrylic teeth production, we make most efficient machines for our customers. All machines are compact, user friendly and suitable to teeth manufacturing environment.

## **Customized Machine Designs For Teeth Manufacturing**

We make product development as to our customer requirements. The customers explain the needs and where they suffer, we provide tailor-made solutions for them.

## **In-house Machine Check with Customer Parameters**

Every machine is tested in our company with customer's parameters. For us, the success is to get desired results with customer's production conditions. We also consult them to be more effective.

## **World's Biggest Teeth Production Machines Manufacturing Center**

We are manufacturing teeth & Pmma disc production machines for years. We are able to set-up more than 5 medium level factories in a year.

# PRESS 'n PRODUCE TEETH

## Specialized Pressing Machines For Teeth Manufacturing

Clean  
Production

All Stainless  
Equipments

Perfect adaptation with Arma  
Mould and Trim 'n Mount



### Compact Design

Electrical and hydraulic unit is inside the frame.

Eco-friendly design.

Low noise.

Small space needed.

### Flexible

There are different options for Press 'n Produce. 10-8-6 mould capacity are available.

### PLC + PID

All temperature, pressure and clamping force controlled by PLC. Heating controlled by PID

### Arma Clamp Technology

PLC controlled clamping and decompression feature helps gas release from the mould and eliminates porosity.

### Arma Heat & Cool Technology

With our heating technology, every point on the mould has desired temperature. Besides, our cooling technology provides fast & homogeneous cooling down. Therefore polymerization is being completed perfectly.

### Arma Force Distribution

With equal our force distribution technology, we are sure about homogenous material flow to tooth cavities. Equal our force distribution provides better polymerization, longer mould life, and eliminates defected tooth.

# PRESS 'n PRODUCE BLOCK



## Produce your own PMMA block

Clean Production

All Stainless Equipments

### Compact Design

Electrical and hydraulic unit is inside the frame.

Eco-friendly design. Low noise.

Small space needed

### PLC + PID

All temperature, pressure and clamping force controlled by PLC.

Heating controlled by PID.

### Arma Force Distribution

With equal our force distribution technology, we are sure about homogenous material flow to tooth cavities. Equal our force distribution provides better polymerization, longer mould life, and eliminates defected tooth.

### Arma Clamp Technology

PLC controlled clamping and decompression feature helps gas release from the mould and eliminates porosity.

### Arma Heat & Cool Technology

With our heating technology, every point on the mould has desired temperature. Besides, our cooling technology provides fast & homogeneous cooling down. Therefore polymerization is being completed perfectly.

PUSH 'n  
DOSAGE

## Eliminate Material Executer at Pressing Area

Clean  
Production

All Stainless  
Equipments

Perfect adaptation with Arma Mould  
and Arma Pressing Machine



### Compact Design

All you need is a table around the pressing machine.

Eco-friendly design.

Low noise.

Small space needed.

### Flexible

Works with all type of the pressing machines.

### PLC Controlled

Grammage controlled by PLC.

Diameter of the material is adjustable with our quick changed nozzles.

### Arma Cooling Technology

Material stays at the same viscosity for 6 hours.

### Clean Production

Material stored in a stainless steel box. Therefore there is no dirt on the material coming from production area.

### Practical Working

Push the button, get the material.



# PLACE 'n TRIM

## No polishing! No sorting!

Just Trim and Sort.



### Fast Process - Eliminates Labor Intensity

In normal cases teeth production is very labor intensive due to the need of tooth sorting and mounting. With our machine; you load the teeth with crust (biscuit) and get sorted teeth automatically. This gives the chance to produce teeth with very low cost levels.

### Patented System

We firstly made this crust cutting technology for teeth manufacturing. Thanks to our design capability & precious mould production technologies we clean the crust around teeth perfectly without any polishing need.

### PLC Controlled

The machine has its own PLC. All the models recipes are loaded to the machine as to your mould chart. By the way you do not make any set-up for each model.

### Cutting is Dangerous But Our Machine is Safe

Our machine works as to two hand triggering system. Also there are light barriers to eliminate and suffer or injury.

### Customized Machine Designs For Teeth Manufacturing

We make product development as to our customer requirements. The customers explain the needs and where they suffer, we provide tailor-made solutions for them.

### Compact Design

Electrical and pneumatic unit is inside the frame. The design is eco-friendly. The noise level is very low. It requires very small space.

### Quick Model Change - SMED

We designed the machine not to loose to much time during model change. You can change the model less than 10 minutes. By the way you do not need to make any buffer stock.

# TRIM 'n MOUNT

**No polishing! No sorting! No mounting!**

**Just Trim 'n Robot Mounts!**

**Mount teeth at the fastest level**

No need for waiting image processing. 3 times faster than competitors.

**Arma Patented Trimming System**

Cleans the crust perfectly. Industry change technology. Perfectly prepared trimming tools.

**Adaptive working with Arma Waxing System**

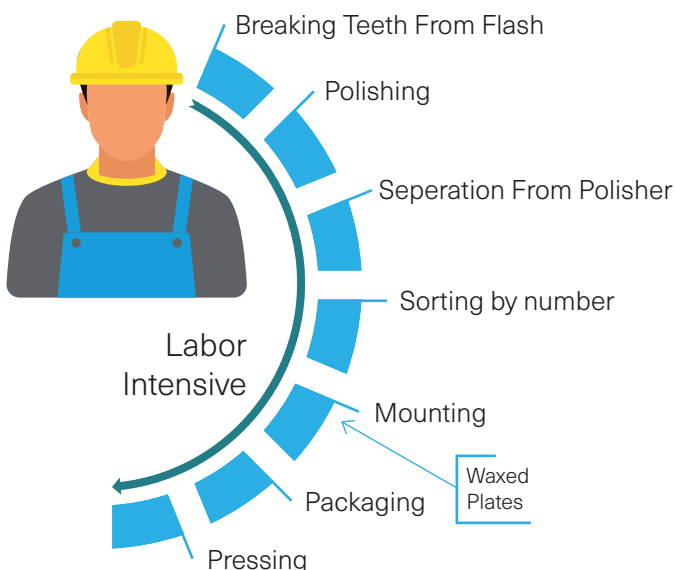
Special cartridge system feeds waxed plates to the system automatically. Conditioning the wax for mounting.

**Arma printing system**

Elegant view with laser technology. No need for cliché change.

**Game Rules has been changed!  
Trim 'n Mount !**

**Trim ' Mount Teeth Production Cycle**



# PRINT 'n WAX

## Feed plastic plates; take printed and waxed automatically



### Cartridge System

The machine has a cartridge system. You load the plastic plates to a special area. You get printed and waxed plates.

### Automatic Waxing

Our newly developed machine makes the waxing automatically. The wax melted in a storage area and drained to the plate automatically by positioning sensors.

### Quick Change Cliche System

We know that a lot of time is lost during model name change, colour name change. Our perfectly designed cliches eliminated this problem. With centering pins within seconds you can change the cliches easily.

### Fast Machine

The machine completes the printing & waxing of 1 plate within 2,5 seconds.

### Automatic Printing

We implemented hot stamping technology to this machine. Plates comes to printing section automatically and as to the PLC system the brand name, model name and colour detail perfectly being printed to plates.



# FORMULATE 'n SHADE

## Proven Recipes for Making Your own Material

### Decrease your material cost by 66% !

Buy our high quality material formulation. In this case, you will have your own material which is already accepted and used widely by the market. From one side you are decreasing your cost; from the other side you increase your product quality.

### Formulate Your Own Material

We supply to you powder & liquid formulation. You buy selected materials from industrial suppliers and blend your own material. Blending machines are also being supplied. In conclusion you gain;

- Independent from other manufacturers.
- Widely accepted cross-linked material.
- Enhanced material stability.
- Porosity free production.
- Enhanced durability.

### Shade Your Own Material

We supply you the shading recipes together with special blending & mixing machines. Our blending technology provides you perfect color match for every batch. Vita and Ivoclar shades are available.

### How to Mix?

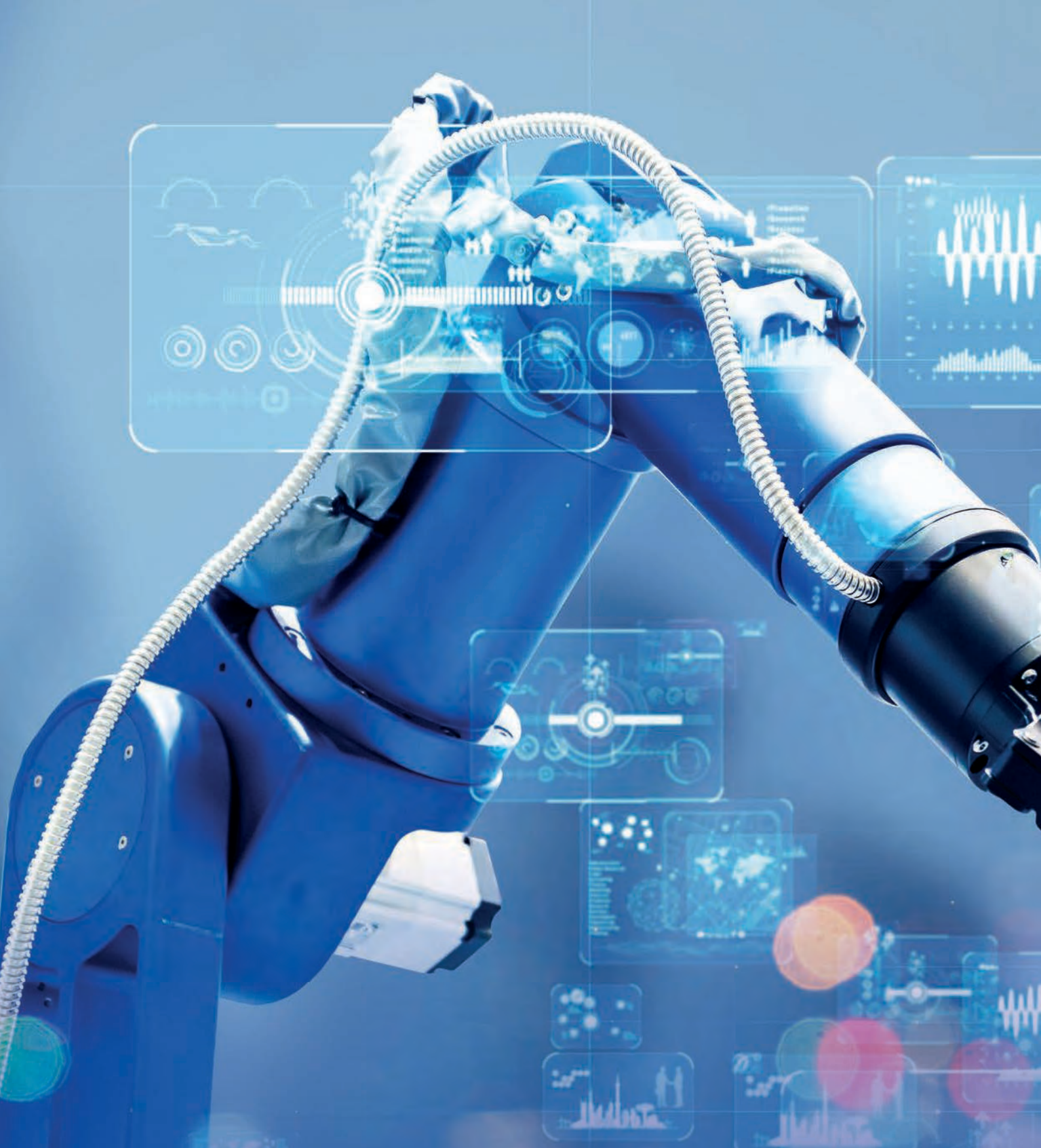
We supply the information how to mix the powder and liquid perfectly. You gain;

- Perfect polymerization.
- Eliminated porosity.
- Standart working conditions.

### How to Store?

We teach you how to store material perfectly for a standardized production.





**We are bringing you to the new level; Fully Automated Teeth Production. We are offering you Tailor-Made Automation Projects.!**

In a world of increasing market volatility, shorter product life cycles, higher product complexity, and global supply chains, companies are seeking to become more flexible and responsive to business trends. Automated systems provide recommendations how companies can ease these challenges: The traceability of the whole product lifecycle will allow companies to use data from production and service which will lead to faster product improvements. Smart items will bring stronger integration of top floor and shop floor and thus more intelligence and flexibility to production. With these technologies, companies can react faster to demand changes and implement new configurations easier or even re-plan production much faster.

# AUTOMATED SOLUTIONS FOR ACRYLIC TEETH MANUFACTURING



/Administration  
/Human Resources  
/Legal  
/Accounting  
/Finance  
/Marketing  
/Publicity  
/Promotion  
/Research  
/Business  
/Development  
/Engineering  
/Manufacturing  
/Planning

**No need for experienced people for teeth manufacturing anymore.**

As we follow the new improvements we see that new generation labors do not want to work in production processes. Manufacturers looking for new labors for increasing the capacity however, it is not so easy. At this point, Arma Dental provides tailor-made systems uniquely for customers. Teeth pressing, sorting, mounting processes are easy to be automated with our technologies. If you are suffered from this problem (lack of labors, experienced labor need etc) we are here to develop unique solution for you.



**TEETH**  
FACTORY





## **World's Most Efficient Teeth Factory**

Arma Dental technologies offer you to set- up most efficient teeth factory in your hometown.

## **Highest Production Mount per Labor**

World general is around 1000-1200 full sets teeth production per labor per month. With Arma Dental technologies you can produce 3000-4000 full sets teeth per labor per month.

## **Teeth manufacturing is not labor intensive anymore.!**

With our patented technologies you do not need to find experienced labors. For each operation 15 days training is enough to make a standart labor as a teeth manufacturing labor.

## **Scalable Production Center**

As to market needs you can start to manufacture teeth with different capacities. The alternatives are starting from 300 full sets production per day. Medium level is 500 full sets per day. Optimum level is 1000 full sets per day to start.

## **We do not set-up just factory; we train your labors also.**

When you start a project we start with product development. We work with you to create best product as to your market needs. Also, we train your labors to get maximum performance.

## **Proven material formulations; proven production parameters.**

When you invest for teeth manufacturing with Arma Dental; you will not live any surprise. For years all products, production parameters and material formulations proven from the market.

# ARMA DENTAL



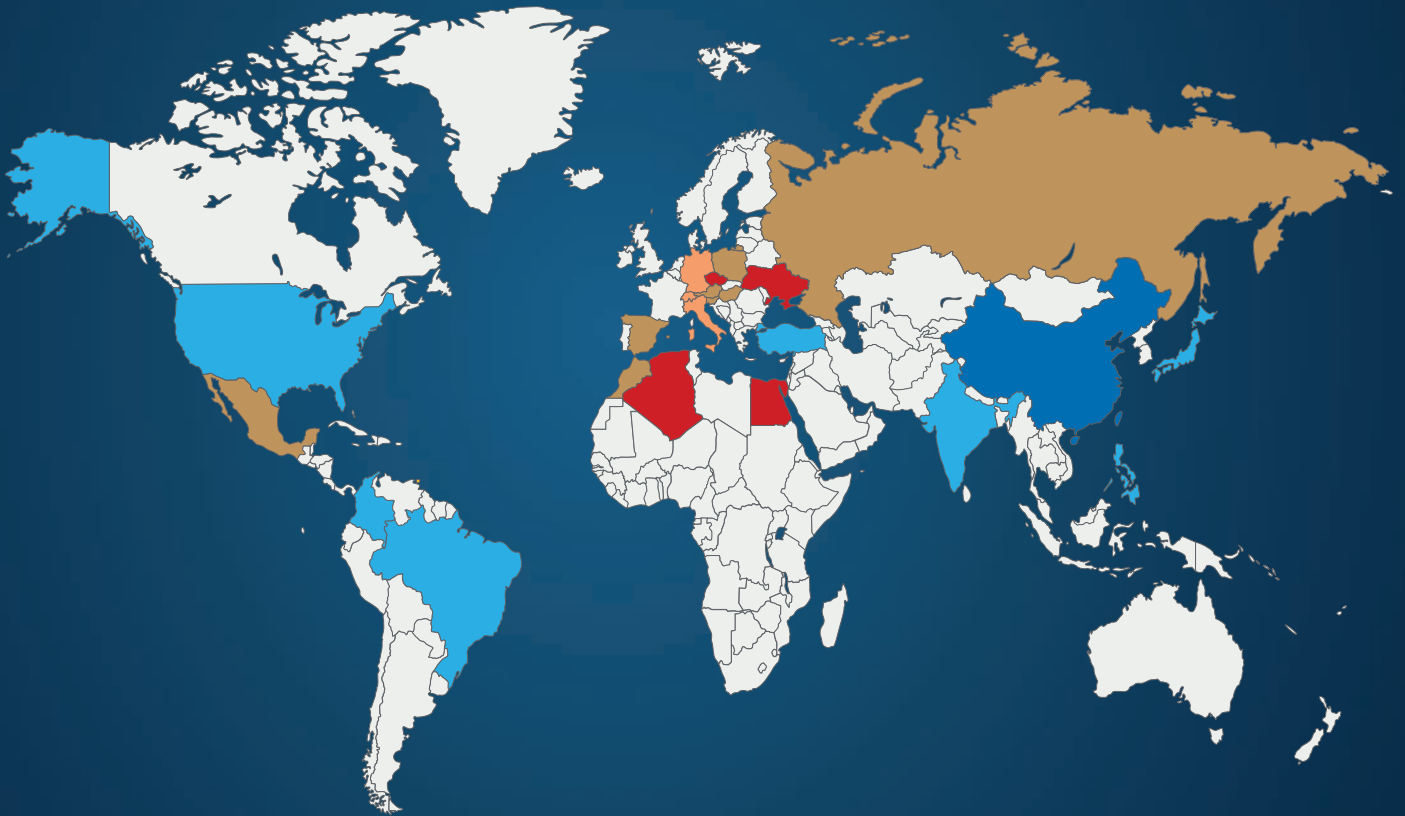
## A market growing %8-10 percent every year

Acrylic teeth market is growing every year. However the cost competition is also getting harder and harder. All markets are waiting for low-cot but high quality teeth. Don't you want to be a competitive partner for this growing market?

## Industry Average: 4000 Sets / Labor per Month

Acrylic teeth manufacturing is labor intensive for years. Processes are strongly dependent to experienced labors. Especially sorting, mounting and pressing. Besides, the interaction with the technology is not at desired level. All these realities make acrylic teeth production relatively low-efficient.

# MAKES YOU RULEMAKER



## Arma Dental Provides 20000 Sets / Labor per Month

We see teeth production differently. We are developing new methods and products. We focused to eliminate labor intensive situations, experienced labor dependency. Besides, we put new technologies like crust trimming. By this way our technologies and products increasing efficiency of teeth production dramatically.

## 0,1 EUR / Set Cost Level!

You have chance to compete even with China. Thanks to our most-developed technologies, it is possible to produce teeth at lowest cost for today. Pay-back time of investment will be at soonest time. In conclusion, we are ready to set up a very feasible turn-key project for you.

### Annual Production Capacity

5M-10M	10M-25M	25M-50M	50M-100M	100M-
Algeria	Slovenia	Germany	Turkey	China
Egypt	Poland	Italy	India	
Indonesia	Austria	Switzerland	Japan	
Czech Rep.	Spain		Philippines	
Ukraine	Hungary		Brasil	
	Russia		Colombia	
	Trinidad		USA	
	Mexico			
	Morocco			

# PRODUCE



**Sample Facility to Produce 4000 Sets of Teeth per Day**



- ▶ Material Preparation
- ▶ Capacity: Daily Needed Amount
- ▶ Operating: 0,2 Labor



- ▶ Pressing
- ▶ Capacity: 4000 Sets of Teeth per Shift
- ▶ Operating: 3 Labors



- ▶ Printing and Waxing
- ▶ Capacity: 4000 Cards of Teeth per Shift
- ▶ Operating: 1 Labor

# ACRYLIC TEETH



- ▶ Trim 'n Mount
- ▶ Capacity: 4000 Sets of Teeth per Shift
- ▶ Operating: 1 Labor



- ▶ Quality Inspection & Boxing
- ▶ Capacity: 4000 Sets of Teeth per Shift
- ▶ Operating: 0,9 Labor

# PRODUCE



## Infrastructure

- ▶ Factory Site: 500 sq meters
- ▶ Installed Electricity: 70 kW
- ▶ Compressed Air: 6-8 bar

## Operation

- ▶ Labor: 7 People
- ▶ Working Hour: 10 Hours

*\* All these informations given by Arma Dental calculations. These can changes as to company situations. For final calculation please contact with us*

# ACRYLIC TEETH



## Turnkey Projects with Labor Training and On-Site Set-up



### Investment

- ▶ Needed Investment: Around 500K EUR
- ▶ Set-up Time: 8 Months to Factory Start
- ▶ CROI Time: 6-24 Month

*\* These numbers can be changeable as to company situations.*

### Cost Analysis

- ▶ Labor Cost 0,04 EUR
- ▶ Material Cost 0,04 EUR
- ▶ Packaging 0,04 EUR

*\* Administration, marketing and energy costs should be calculated additionally by yourself.*

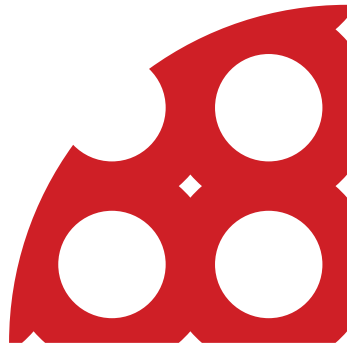
*\* Labor cost calculated from 600 EUR.*

*\* All these informations given by Arma Dental calculations. These can changes as to company situations. For final calculation please contact with us*

# The better way of Dental 3D Printing







### **All Resins Dimensionally Tested By Cube Printings from Corner to Center Of Printing Area**

First test is dimensional stability test. We put 9 cubes as shown at the left picture to the printing table. Most of the printers has a light intensity difference from center to corner by %9-%30. We measure all the printed results before & after post cure and see the standart deviation. Thanks to our technology we get 9-16 micron standart deviation from the printed results. One of the most famous resin's standart deviation is more than 26 micron.

### **All resins needs to work as fast as possible**

We control our resins formulations' reaction speed when the resin exposure by UV light. We achieve this not adding more photo initiators to the resin. By the way there is no color change after days and weeks. For example; with a light intensity  $7 \text{ mW/cm}^2$ ; we are able work with 0,8-1,1 sec exposure times. A model which has around 300 layers (50 micron) can be printed in 19 minutes.

### **All resins needs to work by short separation distances not to loose much time**

We develop our resins to work fast with all types of printers. To achieve that, we decrease the separation force of our resin from printing film. For example, one of the most famous printer brand works with its own resin by a 10 mm separation distance. We are able to work with 3.7 mm. It means %40-%50 less printing times.

### **All Resins Geometrically Tested By 3d Deformation Analysis**

As a last testing; we make 3D deformation analysis with the original datas. Our model resins has below than 100 micron deformation for a full arch. This is a high level precision for the 3D printing market.

### **We Create our own formulations as to the process need**

First we analyze the process and then start to develop formulations. We make our own synthesis for some of the indicators in our synthesis laboratory. Surface modifications are the key point to control the chemical bonds. We are professional regarding these critical points.

### **We make our in-house analysis and test as to the ISO standards**

We measure all of our resins regarding the Elasticity modulus, flexural strength, tensile strength, hardness and elongation. Also water absorption tests, colour stability tests, phase separation tests are made in house from our analysis laboratory.

# DENTAL MODEL HP

Biocompatible resin for dental models.  
Highly accurate and durable.



Optimised polymerisation during UV penetration / Controlled Reaction Speed

## SPECIALITIES

- ▶ Fast printing
- ▶ Excellent Endurance for Autoclave
- ▶ Excellent Dimensional Stability
- ▶ Perfect topographies
- ▶ High Surface Hardness
- ▶ Works with 385 / 405 nm
- ▶ Scratch Resistance
- ▶ Carvable like gypsum
- ▶ Compatible with DLP / LCD
- ▶ Color Stability
- ▶ High flexural strength
- ▶ Shape Stability After Curing

- ▶ Eliminated Phase Separation During Storage / Long Shelf Life

## Mechanical Properties

Property	Procedure	Result
Flexural Strength	ISO 4049	118,88
Elasticity Modulus	ISO 4049	2047,05
Viscosity (m.Pa.s 23 °C)	—————	470
Elongation at Break (mm)	ISO 4049	3,12

## Packaging Alternatives



1000 gr

## Colour Alternatives

- Standart Colour: Peach
- Alternative Colour: Gray

# DENTAL MODEL ST

Biocompatible resin for dental models.  
Highly accurate and cost effective.



Optimised polymerisation during UV penetration / Controlled Reaction Speed

## SPECIALITIES

- Ultra fast printing
- Perfect topographies
- Color Stability
- High Surface Hardness
- Excellent Endurance for Autoclave
- Excellent Dimensional Stability
- High flexural strength
- Works with 385 / 405 nm
- Compatible with DLP / LCD
- Shape Stability After Curing

- Eliminated Phase Separation During Storage / Long Shelf Life

## Mechanical Properties

Property	Procedure	Result
Flexural Strength	ISO 4049	100,31
Elasticity Modulus	ISO 4049	2081,3
Viscosity (m.Pa.s 23 °C)	—————	110
Elongation at Break (mm)	ISO 4049	1,95

## Packaging Alternatives



1000 gr

## Colour Alternatives

- Standart Colour: Beige
- Alternative Colour: Gray

# TEMP TEETH

Biocompatible resin for temporaries.  
Ultra high flexural strength.  
Low water absorption and stable colors.



Optimised polymerisation during UV penetration / Controlled Reaction Speed

## SPECIALITIES

- Fast printing
- Easy Stain & Glaze
- Nearly no water absorption
- Perfect Details
- Excellent Dimensional Stability
- MMA free formula
- Color Stability
- Ultra high flexural strength
- Easy to polish
- Bio-compatible
- Compatible with DLP / LCD

- Eliminated Phase Separation During Storage / Long Shelf Life

## Mechanical Properties

Property	Procedure	Result
Flexural Strength	ISO 10477	125,46
Elasticity Modulus	ISO 10477	2329,48
Viscosity (m.Pa.s 23 °C)	—————	400
Elongation at Break (mm)	ISO 10477	3,7
Water Absorption (mg/mm <sup>3</sup> )	ISO 4049	0,078

## Packaging Alternatives



1000 gr

## Colour Alternatives

- A1-A2-A3-B1-BL-Bleach
- Other colors are on demand

## Certification

- CE Class I (30 days usage in mouth)

# DENTURE BASE

Biocompatible resin for temporaries.  
Ultra high flexural strength,  
low water absorption and stable colors.



Optimised polymerisation during UV penetration / Controlled Reaction Speed



## SPECIALITIES

- ▶ Fast printing
- ▶ Easy Stain & Glaze
- ▶ Nearly no water absorption
- ▶ Perfect Details
- ▶ Excellent Dimensional Stability
- ▶ MMA free formula
- ▶ Color Stability
- ▶ Ultra high flexural strength
- ▶ Easy to polish
- ▶ Bio-compatible
- ▶ Compatible with DLP / LCD

- ▶ Eliminated Phase Separation During Storage / Long Shelf Life

## Mechanical Properties

Property	Procedure	Result
Flexural Strength	ISO 10477	125,46
Elasticity Modulus	ISO 10477	2329,48
Viscosity (m.Pa.s 23 °C)	—————	400
Elongation at Break (mm)	ISO 10477	3,7
Water Absorption (mg/mm <sup>3</sup> )	ISO 4049	0,078

## Packaging Alternatives



1000 gr

## Colour Alternatives

- Original - Light
- Other colors are on demand

## Certification

- Under CE Class II Certification Process

# DENTAL CAST V 1.0

Biocompatible resin for dental casting.  
Cost effective and fast working.



Optimised polymerisation during UV penetration / Controlled Reaction Speed

## SPECIALITIES

- Ultra fast printing
- Perfect Details
- Fast Burning
- Low Shrinkage
- Residue Free
- Ensure Clasp Flex Without Breaking
- Excellent Dimensional Stability
- Low Thermal Expansion
- Optimized Depth of Cure
- Works with 385 / 405 nm
- No need for post curing
- Easy to work with investments
- Compatible with DLP / LCD

- Eliminated Phase Separation During Storage / Long Shelf Life

## Mechanical Properties

Property	Procedure	Result
Flexural Strength	ISO 4049	33,89
Elasticity Modulus	ISO 4049	640,31
Viscosity (m.Pa.s 23 °C)	—————	300
Elongation at Break (mm)	ISO 4049	7,11
Burnout	—————	< % 0,05

## Packaging Alternatives



1000 gr

## Colour Alternatives

- Standart Colour: Transperent Yellowish

# SURGICAL GUIDE

Biocompatible resin for surgical guides.  
Cost effective and highly precise



Optimised polymerisation during UV penetration / Controlled Reaction Speed

## SPECIALITIES

- Ultra fast printing
- Easy to Polish.
- High precision
- Transparent to see drill position.
- Excellent Dimensional Stability
- Optimized Depth of Cure
- Works with 385 / 405 nm
- High Flexural Strength
- Compatible with DLP / LCD

- Eliminated Phase Separation During Storage / Long Shelf Life

## Mechanical Properties

Property	Procedure	Result
Flexural Strength	ISO 4049	88,17
Elasticity Modulus	ISO 4049	1937,54
Viscosity (m.Pa.s 23 °C)	—————	300
Elongation at Break (mm)	ISO 4049	1,71

## Packaging Alternatives



1000 gr

## Colour Alternatives

- Standart Colour: Transperent

## Certification

- CE Class I (30 days usage in mouth)

# IMPRESSION TRAY

Biocompatible resin for customized trays.  
Strong and durable to withstand the forces of  
taking the patient impression.



Optimised polymerisation during UV penetration / Controlled Reaction Speed

## SPECIALITIES

- Ultra fast printing
- Improves impression accuracy
- Compatible with DLP / LCD
- Eliminating stone models
- Excellent Dimensional Stability
- Works with 385 / 405 nm
- High Flexural Strength.

- Eliminated Phase Separation During Storage / Long Shelf Life

## Mechanical Properties

Property	Procedure	Result
Flexural Strength	ISO 4049	143,03
Elasticity Modulus	ISO 4049	2640,76
Viscosity (m.Pa.s 23 °C)	—————	470
Elongation at Break (mm)	ISO 4049	3,41

## Packaging Alternatives



1000 gr

## Colour Alternatives

- Standart Colour: Blue

# SPLINT

Biocompatible resin for occlusal splints.  
High flexural strength,  
No taste - Neutral Odour



Optimised polymerisation during UV penetration / Controlled Reaction Speed



## SPECIALITIES

- Fast printing
- Easy Stain & Glaze
- Low viscosity for easy cleaning
- Perfect Details
- Excellent Dimensional Stability
- No taste and neutral odour
- Color Stability
- High mechanical strength
- High bending strength
- Bio-compatible
- Compatible with DLP / LCD

- Eliminated Phase Separation During Storage / Long Shelf Life

## Mechanical Properties

Property	Procedure	Result
Flexural Strength	ISO 4049	90
Elasticity Modulus	ISO 4049	2329,48
Viscosity (m.Pa.s 23 °C)	—————	400
Elongation at Break (mm)	ISO 4049	4,5

## Packaging Alternatives



1000 gr

## Colour Alternatives

- Original - Transperent
- Other colors are on demand

## Certification

- CE Class I (30 days usage in mouth)

# ArmaResin



the better way

# **COST EFFECTIVE HIGH SPEED ACCURATE**

COMPATIBLE WITH

**ASIGA®**

**MIICRAFT**

 **SHINING 3D**

**CREALITY**

 **phrozen**

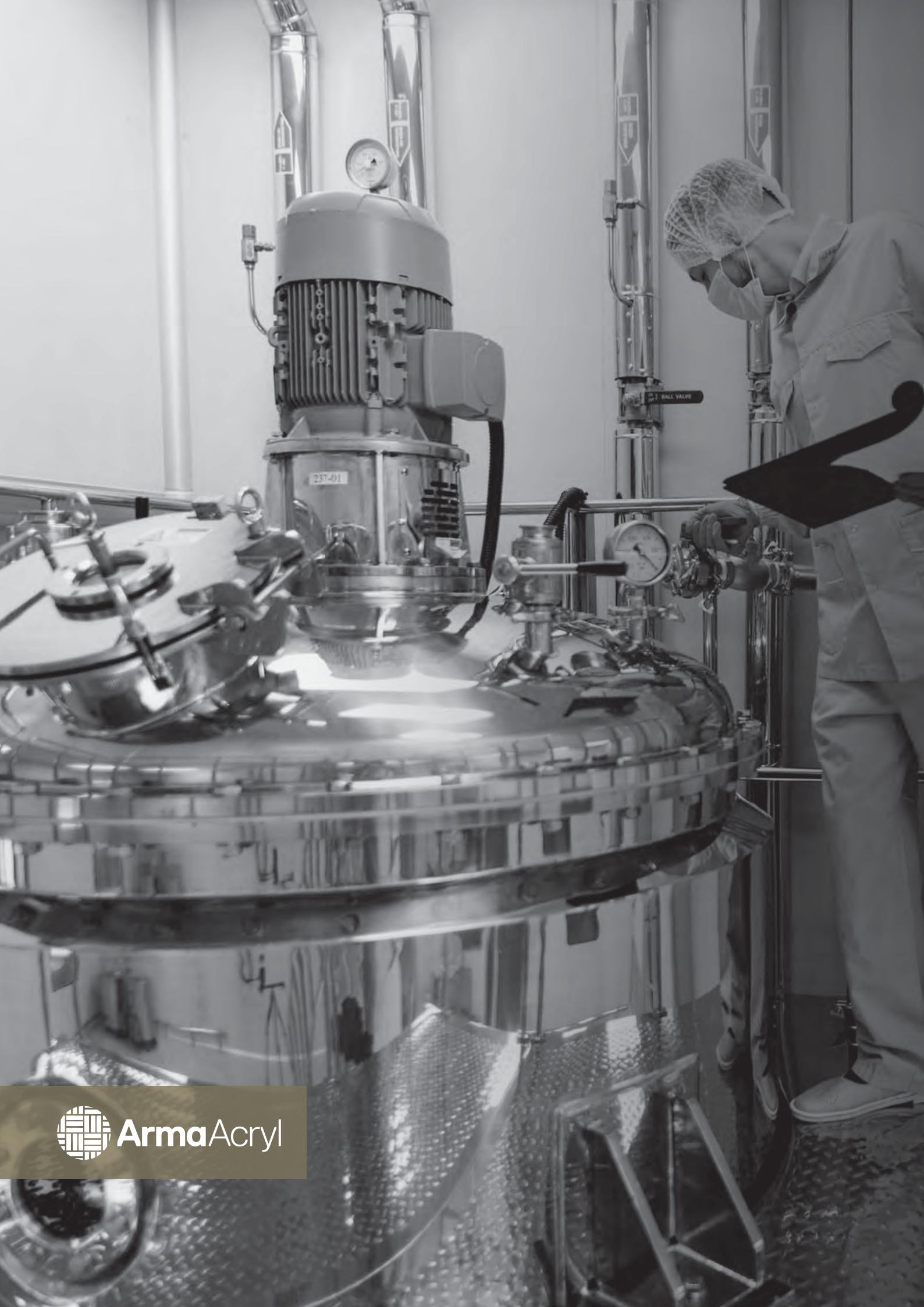
**ANYCUBIC**

 **FLASHFORGE**

 **LINIZ**

 **ACKURETTA**

**rapidshape**



ArmaAcryl

# The Better Way Of Making Teeth / Denture Base Acrylics



“ Poly(methyl methacrylate) – so-called ‘acrylic resin’ – is usually the material of choice for full denture bases and ‘gumwork’ for removable devices. It has also been the chemical model for many other material developments in dentistry, such as restorative materials. The properties, behaviour and handling of poly(methyl methacrylate) likewise form a basis for understanding those other materials.

A polymerization reaction is performed as part of the normal dental procedures in the laboratory, and the proper control of this is important for controlling the properties of the product. It is essential to understand both the heat-cured and cold-cured types, whose properties and limitations differ because of their processing differences.

”

**Arma Dental providing to its customers a new product. Dental Acrylics.!**  
**We manufacture all types of acrylics in our chemical production center.**

- ◆ Standart Tooth Polymer
- ◆ High Quality Tooth Polymer
- ◆ Heat Cure Denture Base Polymer
- ◆ Self Cure Denture Repair Polymer
- ◆ Cross-Linked Tooth Polymer
- ◆ Equivalent Monomers



Shading & Blending Technology  
Transfer for Creating Your Own Brand

## Properties

Type	Reduced Viscosity [ml/g]	Grain Size [μm]	Water Content	Residual Peroxide [%]	Recommended Monomer
Standart Tooth Polymer	2.0-4.0	50-60	0.5-1.5	0.2-0.4	Crosslinked
High Quality Tooth Polymer	4.0-6.0	80-100	0.5-1.5	0.1-0.3	Crosslinked
Heat Cure Denture Base	3.0-5.0	90-80	0.5-1.5	0.3-0.5	Crosslinked
Self-Cure Denture Repair	2.0-3.5	40-60	0.5-1.5	0.6-0.8	t-Amine
Cross-Linked Teeth Polymer	n.d.	30-40	0.5-1.5	<0.1	Crosslinked

## Applications

Type	Artificial Teeth	Dentures	Orthodontics	Repair	Trays
Standart Tooth Polymer	X				X
High Quality Tooth Polymer	X				
Heat Cure Denture Base		X			X
Self-Cure Denture Repair			X	X	X
Cross-Linked Teeth Polymer	X				



ArmaShoe



# The better way shoe production



## **Customised mould solutions for shoe manufacturers with our mould manufacturing expertise.**

Expertise and design ability have enabled us to reach a high degrees specialization for manufacturing shoe moulds. Our high-end technologies and production machines allow us to give fast delivery times with perfect results. The list of the moulds can be produced by us for shoe manufacturers.

- ▶ RPU One Density
- ▶ Rubber Pur Mould
- ▶ Rubber PU Moulds
- ▶ TPU PU Mould
- ▶ PU Two Density
- ▶ PU One density

# SHOE MODEL

Specialised 3D printing resin for shoe sole printing.  
This can be used for prototyping and to create models aluminium casting shoe sole moulds.



Optimised polymerisation during UV penetration / Controlled Reaction Speed

## SPECIALITIES

- Ultra fast printing
- Perfect topographies
- Color Stability
- High Surface Hardness
- Excellent Dimensional Stability
- High flexural strength
- Works with 385 / 405 nm
- Shape Stability After Curing
- Compatible with DLP / LCD

- Eliminated Phase Separation During Storage / Long Shelf Life

## Mechanical Properties

Property	Procedure	Result
Flexural Strength	ISO 4049	100,31
Elasticity Modulus	ISO 4049	2081,3
Viscosity (m.Pa.s 23 °C)	—	110
Elongation at Break (mm)	ISO 4049	1,95

## Packaging Alternatives



1000 gr

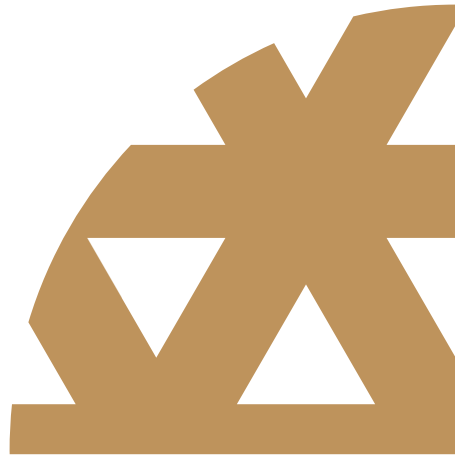
## Colour Alternatives

- Standart Colour: Beige
- Alternative Colour: Gray



ArmaJewel

# The Better Way Of Jewellery Casting



## Upcoming Product Group

# JEWELCAST V 1.0

Specially formulated casting resin for jewellery.



Optimised polymerisation during UV penetration / Controlled Reaction Speed

## SPECIALITIES

- Ultra fast printing
- Perfect Details
- Low Shrinkage
- Low Thermal Expansion
- Ensure Clasp Flex Without Breaking
- Excellent Dimensional Stability
- Optimized Depth of Cure
- Compatible with DLP / LCD
- Works with 385 / 405 nm
- Residue Free
- No-need for post curing

- Eliminated Phase Separation During Storage / Long Shelf Life

## Mechanical Properties

Property	Procedure	Result
Flexural Strength	ISO 4049	33,89
Elasticity Modulus	ISO 4049	640,31
Viscosity (m.Pa.s 23 °C)	—————	300
Elongation at Break (mm)	ISO 4049	7,11
Burnout	—————	< % 0,05

## Packaging Alternatives



1000 gr

## Colour Alternatives

- Standart Colour: Transperent Yellowish



**OEM**

**The Better Way Of Having Your Own Products Under  
Your Brand Name**

