



Food Agriculture and Industrial Machinery Manufacturing Co

Main Office:

Cumhuriyet Mah. 771 Sok. No: 3/A Yüreğir-ADANA / TURKEY

Tel./Phone: (+90 322) 323 91 01 - Fax: (+90.322) 322 24 85

Factory:

Adana Organized Industrial Zone ADANA/TURKEY

Phone: (+90 322) 393 41 00 - Fax: (+90.322) 393 41 02

## About Us

"Industrial cooling systems, food and agriculture company operating in the field of, was founded in 2000 in Adana. Company owners has worked in the Cooling systems industry for many years and they have experience about this work.

"Our goal; deliver solutions quickly for our customers and to further increase customer satisfaction.

"Milk Cooling Tanks, Industrial Cooling Systems, Food Machinery, Agricultural Machinery, Milking Systems, All kind of Cheese-Butter Milk- Honey Processing Machinery are in our production line.

## Our Values

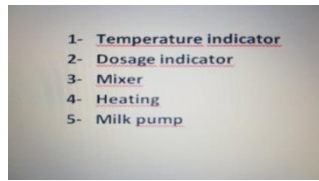
"Quality, Expertise, Timely Delivery, Innovation, Responsibility, Reliability, Employee Attention, Social Responsibility



### CALF FOOD PREPARATION MACHINE WITH PASTEURIZATION MODEL



#### Control Board



#### TECHNICAL SPECIFICATIONS

- 150 Lt, 200 Lt and 250 Lt in capacities
  - Completely made from AISI 304 stainless steel.
  - Double skinned with polyurethane insulated
  - With wheel. Can be moved easily
  - Two speed adjustable (700 rev / min and 1400 rev / min). For milk and calf milk powder
- Thanks to a high-speed mixer is uniformly mixed powdered formula without clumping.
- 380 volt electric resistance heating system is working and water-cooled
  - Boiler in the product temperature is adjustable optional feature
  - The product temperature in the boiler can be monitored on the digital display product during deployment
  - 12 volt electric drive is unloading gun with battery
  - It has ISO 9001:2008 certificate

## Truck-Mounted Milk Transport Tanks /Product code: BSTN



"2000 lt / 3000 lt / 4000 lt / 5000 lt / 6000 lt capacity

"Horizontal cylindrical type and is double-walled.

"Insulation material; high density polyurethane foam without CFC and isolation thickness 60 mm.

"A first main body wall and domes 2.5 mm, 1.5 mm thick second body of AISI 304 stainless steel.

"Walking path is stainless steel railing.

"With two stainless steel stairs.

"Collector output is connected to the tank with a stainless record.

"CIP washing title and complete CIP tanks are in line.

"Milk filling line is located.

"Tank and the tank of the sub-frame are AISI 304 stainless steel.

"Multiple tanks has stainless steel walkway.



## Milk Cooling Tanks

### VERTICAL CYLINDRICAL MODELS



**PRODUCT CODE:** BSST-D-500 L

**CAPACITY :** 500 LITER

"Vertical cylindrical model, entirely from AISI 304 quality stainless steel manufacturing .

"Hinged lid is one piece.

"Cooling evaporator (roll-bont) has tested against 40 bar test pressure.

"1. Body 2 mm and isolated body is 1.5 mm AISI 304 quality stainless steel , Insulation range is 50 mm with polyurethane without CFC.

"Adjustable pedestal.

"Cooling group is on the same chassis with cooling tanks, 404 gas is used.

"0,37 kw, 33 d/d reducers and accordingly are winged stainless steel mixer

**PRODUCT CODE:** BSST-D-1000 L

**CAPACITY :** 1000 LİTER

"Vertical cylindrical model, entirely from AISI 304 quality stainless steel manufacturing.

"Hinged lid is one piece

"Cooling evaporator (roll-bont) has tested against 40 bar test pressure.

"1. Body 2 mm and isolated body is 1.5 mm AISI 304 quality stainless steel , Insulation range is 50 mm with polyurethane without CFC.

"Adjustable pedestal.

"Cooling group is on the same chassis with cooling tanks, 404 gas is used.

"0,37 kw, 33 d/d reducers and accordingly are winged stainless steel mixer.

**PRODUCT CODE:** BSST-D-1500 L

**CAPACITY :** 1500 LİTER

"Vertical cylindrical model, entirely from AISI 304 quality stainless steel manufacturing.

"Hinged lid is one piece.

"Cooling evaporator (roll-bont) has tested against 40 bar test pressure.

"1. Body 2 mm and isolated body is 1.5 mm AISI 304 quality stainless steel , Insulation range is 50 mm with polyurethane without CFC .

"Adjustable pedestal.

"Cooling group is on the same chassis with cooling tanks, 404 gas is used.

"0,75 kw, 36 d/d reducers and accordingly are winged stainless steel mixer.



**PRODUCT CODE:** BSST-D-2000 L

**CAPACITY :** 2000 LİTER

"Vertical cylindrical model, entirely from AISI 304 quality stainless steel manufacturing .

"Hinged lid is one piece.

"Cooling evaporator (roll-bont) has tested against 40 bar test pressure.

"1. Body 2 mm and isolated body is 1.5 mm AISI 304 quality stainless steel , Insulation range is 50 mm with polyurethane without CFC.

"Adjustable pedestal.

"Cooling group is on the same chassis with cooling tanks, 404 gas is used.

"0,75 kw, 36 d/d reducers and accordingly are winged stainless steel mixer.

CAPACITY	500 LT	1000 LT	1500 LT	2000 LT
TYPE	Vertical	Vertical	Vertical	Vertical
	Cylindrical	Cylindrical	Cylindrical	Cylindrical
Tank Dimensions				
Width (mm)	1140	1380	1820	1820
Lenght (mm)	1140	1380	1820	1820
Height (mm)	530	700	700	800
Overall Dimensions				
Width (mm)	1230	1480	1900	1900
Lenght (mm)	2030	2300	2800	2800
Height (mm)	920	1120	1120	1220
Cooling Unit				
Engine power	1,5 HP	3 HP	5 HP	7 HP
Operating voltage	220 V-50HZ	380 V-50HZ	380 V-50HZ	380 V-50HZ
Operating Pressure	17	17	17	22
Mixer				
Menstruation	1	1	1	1
Power (KW)	0,37	0,37	0,75	0,75
Operating voltage	220 V-50HZ	380 V-50HZ	380 V-50HZ	380 V-50HZ
Speed (d/d)	33	33	36	36
Automatic washing	No	No	No	No
Digital weighing scale	Optional	Optional	Optional	Optional



## HORIZONTAL CYLINDRICAL MODELS



**PRODUCT CODE:** BSST-Y-3000 L

**CAPACITY :** 3000 LİTER

"Horizontal cylindrical model, Designed according to 0 liquid discharging system, entirely from AISI 304 quality stainless steel manufacturing.

"Cooling evaporator (roll-bont) has tested against 40 bar test pressure.

"1. Body 2.5 mm and isolated body is 1.5 mm AISI 304 quality stainless steel , Insulation range is 55 mm with polyurethane without CFC.

"Adjustable pedestal and Ø 400 mm manhole lid.

"AISI 304 quality stainless steel (non-slip) is a ladder.

"Cooling group is on the same chassis with cooling tanks, 404 gas is used.

"To prevent sudden current draw of the compressors gradually comes into play.

"0,75 kw, 36 d/d reducers and accordingly are winged stainless steel mixer.

"Automatic washing **(Optional)**

"Digital level indicator **(Optional)**

**PRODUCT CODE:** BSST-Y-4000 L

**CAPACITY :** 4000 LİTER

"Horizontal cylindrical model, entirely from AISI 304 quality stainless steel manufacturing.

"Cooling evaporator (roll-bont) has tested against 40 bar test pressure.

"1. Body 2.5 mm and isolated body is 1.5 mm AISI 304 quality stainless steel , Insulation range is 55 mm with polyurethane without CFC.

"Adjustable pedestal and Ø 400 mm manhole lid

"AISI 304 quality stainless steel (non-slip) is a ladder.

"Cooling group is on the same chassis with cooling tanks, 404 gas is used.

"To prevent sudden current draw of the compressors gradually comes into play.

"0,75 kw, 36 d/d reducers and accordingly are winged stainless steel mixer.

"Automatic washing **(Optional)**

"Digital level indicator **(Optional)**



**PRODUCT CODE: BSST-Y-5000 L**

**CAPACITY : 5000 LİTER**

- "Horizontal cylindrical model, entirely from AISI 304 quality stainless steel manufacturing.
- "Cooling evaporator (roll-bont) has tested against 40 bar test pressure.
- "1. Body 2.5 mm and isolated body is 1.5 mm AISI 304 quality stainless steel , Insulation range is 55 mm with polyurethane without CFC
- "Adjustable pedestal and Ø 400 mm manhole lid
- "AISI 304 quality stainless steel (non-slip) is a ladder.
- "Cooling group is on the same chassis with cooling tanks, 404 gas is used.
- "To prevent sudden current draw of the compressors gradually comes into play.
- "0,75 kw, 36 d/d reducers and accordingly are winged stainless steel mixer
- "Automatic washing **(Optional)**
- "Digital level indicator **(Optional)**

**PRODUCT CODE: BSST-Y-6000 L**

**CAPACITY : 6000 LİTER**

- "Horizontal cylindrical model, entirely from AISI 304 quality stainless steel manufacturing.
- "Cooling evaporator (roll-bont) has tested against 40 bar test pressure.
- "1. Body 2.5 mm and isolated body is 1.5 mm AISI 304 quality stainless steel , Insulation range is 55 mm with polyurethane without CFC.
- "Adjustable pedestal and Ø 400 mm manhole lid.
- "AISI 304 quality stainless steel (non-slip) is a ladder.
- "Cooling group is on the same chassis with cooling tanks, 404 gas is used.
- "To prevent sudden current draw of the compressors gradually comes into play.
- "0,75 kw, 36 d/d reducers and accordingly are winged stainless steel mixer.
- "Automatic washing **(Optional)**
- "Digital level indicator **(Optional)**

**PRODUCT CODE: BSST-Y-7000 L**

**CAPACITY : 7000 LİTER**

- "Horizontal cylindrical model, entirely from AISI 304 quality stainless steel manufacturing.
- "Cooling evaporator (roll-bont) has tested against 40 bar test pressure.
- "1. Body 2.5 mm and isolated body is 1.5 mm AISI 304 quality stainless steel , Insulation range is 55 mm with polyurethane without CFC.
- "Adjustable pedestal and Ø 400 mm manhole lid.
- "AISI 304 quality stainless steel (non-slip) is a ladder.
- "Cooling group is on the same chassis with cooling tanks, 404 gas is used.
- "To prevent sudden current draw of the compressors gradually comes into play.
- "2 pieces 0,75 kw, 36 d/d reducers and accordingly are winged stainless steel mixer.
- "Automatic washing **(Optional)**
- "Digital level indicator **(Optional)**





**CAPACITY : 10000 LİTER**

"Cooling evaporator (roll-bont) has tested against 40 bar test pressure.

“Adjustable pedestal and Ø 400 mm manhole lid.

"Cooling group is on the same chassis with cooling tanks, 404 gas is used.

"2 pieces 0,75 kw, 36 d/d reducers and accordingly are winged stainless steel mixer.

“Digital level indicator **(Optional)**”

[illegible]





## Food Processing Machinery

Digital Weighing Craft Milk Reception / Product code: BDTSAT



"Manufactured from AISI 304 stainless steel.

"200, 500, 1000, 2000 lt. capacity.

"Special platform is mounted on the chassis.

"With special panel of milk, kg and lt, and memory makes record.

"It has outlet valve DN 40 or DN 50.

Milk Transport Pump/ Product code :BSNP



"Manufactured from AISI 304 stainless steel.

"Sheathed in stainless.

"It used all of in the food industry.

"2000 lt/h, 5000 lt/h, 10.000 lt/h, 20.000 lt/h, 50.000 lt/h capacities.

Line Filter / Product code :BEHF



"Manufactured from AISI 304 stainless steel.



#### Milk Storage Tank / Product code: BESDT



"Milk, Fruit Juice, Wine , Beer, Olive Oil, Grape Syrup, Glucose, Liquid Rennet etc... storage tanks.

"Manufactured from AISI 304-316 stainless steel.

"Insulated and non-insulated is produced. 1000 lt. 100.000 lt. capacity are produced.

"Side ladder and upper platform.

"CIP washing system, temperature display, level indicator.

"Ergonomic design

#### Flow meter / Product code: BESF

"Manufactured from AISI 304 stainless steel.

"10 t/h and 20 t/h capacity with DN50 output.

"Air sampling tube and filter.

"Magnetically makes precise measurements.

"Panels are available in the digital display.

"Stainless steel chassis has been designed on.



## Yogurt and Buttermilk Units

Dairy Cooking Boiler / Product code: BSPT



"Manufactured from AISI 304 stainless steel.

" 500-1000-1250-1500 lt capacities.

" Three-walled.First fold 2.5 mm, second fold 2.5 mm and third fold 1.5 mm AISI 304 Stainless steel.

"High density polyurethane insulation.

"Butterfly valve DN40 or DN 50.

"Digital temperature display boards and CIP washing ball available.

"0.75 kW gear motor and steam heating.

"Adjustable feet.

Yogurt Vacuum Evaporator/ Product code : BYVE



"Manufactured from AISI 304 stainless steel.

"1000-2000-3000-5000-7000 lt/h capacities.

"Heating evaporate and thickening three tubes, ladder platform,milk pump and vacuum pump.

"Steam pressure gauge, temperature thermometer, vacuum gauge.



#### Buttermilk Process Tanks / Product code: BAPT



"Manufactured from AISI 304 stainless steel.

"500 lt to 3000 lt capacities in. Gas cooling system.

"3 skinned.2 paned. The bottom section of the laser welded cooling rolbont. Another section rolbont is the steam and cooling water circulation.

"Three-walled.First fold 2.5 mm, second fold 2.5 mm and third fold 1.5 mm AISI 304 Stainless steel. "High density polyurethane insulation.

"There is geared motors with speed controller.

"Cooling group is 404 gas is used.

"Digital thermometer and speed control apparatus panel.

"High platform.

#### Buttermilk Filling Machine / Product code: BADM



"Manufactured from AISI 304 stainless steel

"Single, double and triple models.

"Getting glasses, filling, put the lid, cover to paste, put the date and remove cups. Total of 6 stations.

"Control from electrical panel with digital display.



**Homogenizer / Product code : BERH**



- "1000-2000-3000-5000-10000 lt./h capacities.
- "Products of the contacting portion is stainless steel.
- "Electrical control panel is available.
- "Quiet and vibration free operation.

**Heating Fan / Product code: BIA**



- "Manufactured from AISI 304 stainless steel
- "Blower, steam coils and hot air routing shutters

**Fermentation Tube / Product code: BEMT**



- "Manufactured from AISI 304 stainless steel.
- "30 lt capacity and with wheeled.
- "The pressure gauge and yeast gun.



**Milk Cooling Exchanger Plate / Product code: BPSSE**



"AISI 316 stainless steel plates

"Manufactured from AISI 316 stainless steel.

"1000 lt/h to 20000 lt/h capacities.

**Yogurt Filling Gun / Product code: BMYT**



"Manufactured from AISI 304 stainless steel.

"Precision trigger

**Yogurt Trolley / Product code: BEYA**



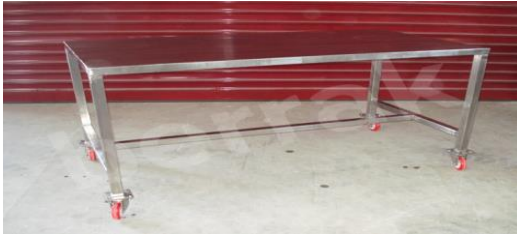
"Manufactured from AISI 304 stainless steel.

"63cmx150cmx150cm in size a total of 5 shelves.

"4 rotating wheels are available in stainless



**Buttermilk Desk / Product code : BACM**



"Manufactured from AISI 304 stainless steel.

"70 cmx150 cm x80 cm dimensions.

"4 rotating wheels are available in stainless.

**Automatic Moulding Yogurt Filling Machine / Product code: BTOGYD**

"Manufactured from AISI 304 stainless steel.

"Binary or quartet models.

"Digital dosage indicator.

"Magnetic milk meter and pump.

"Wheeled. Making self-cleaning feature.





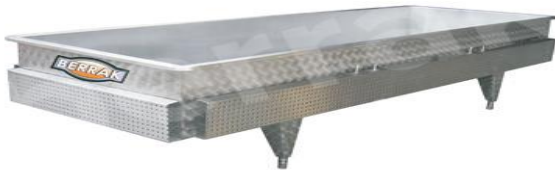
## White Cheese Units

Pasteurizer / Product code : BERP



- "Manufactured from AISI 316 stainless steel.
- "1000 lt/h to 20.000 lt/h capacities.
- "One automation, double-automation and fully automatic, semi-automatic options.
- "Temperature resistant gasket is used of suitable for food.
- "The ability to self-wash.
- "Works with steam, air, electricity and cool water.
- "Special design can be produced.

White Cheese Fermentation Ship / Product code: BPMT



- "Manufactured from AISI 304 stainless steel.
- "1000 lt. -1250 lt. -1500 lt capacities.
- "Adjustable feet and DN 40 outlet valve.

Brine Tank / Product code: BEST

- "Manufactured from AISI 304 stainless steel.
- "1000 lt to 10.000 lt capacities.
- "0.75 kW geared motor.
- "Heated with steam and cooled by cooling water.
- "Vertical cylindrical model, with ladder, manhole covers and temperature display.
- "Suitable capacity water pump.



**Tin Sealing Machine / Product code : BTKM**



"Manufactured from AISI 304 stainless steel.

"It has a capacity of 17 kg tin off.

"Manual and mechanical movement.

**Culture tank / Product code : BEKT**

"Manufactured from AISI 304 stainless steel.

"100-200-300-500-800 lt capacities.

"3 skinned, steam heating, refrigeration with gas.

"High density polyurethane insulation.

"Digital temperature display panel, mixer motor with speed controller and manhole cover is available.

**Cheese Trolley / Product code : BPTA**

"Manufactured from AISI 304 stainless steel.

"4 rotating wheels are available in stainless steel.

**Cheese Desk / Product code: BPCM**

"Manufactured from AISI 304 stainless steel.

"87cmx200cmx80cm dimensions.

"4 rotating wheels are available in stainless steel.



## Kashkaval Cheese Units

Kashkaval, Mozzarella Process Tanks / Product code : BKPT



- "Manufactured from AISI 304 – 316 stainless steel.
- "2000 lt to 12.000 lt capacities.
- "Platform with stainless steel.
- "There is also mobile platform.
- "Pneumatic lifting jack assembly.
- "2 pieces of curd breaking knife and 2 CIP ball is available.
- "Digital temperature display and speed controller is available.
- "Product discharge valve located in the special

**Drained Drum / Product code: BTET**



- "Manufactured from AISI 304 stainless steel.
- "4 rotating wheels are available in stainless steel.
- "1.5 hp engine geared drum and 5 t/h pump available.
- "Engine protection and speed controller available In the control panel.



**Processed Kashkaval Production Line (dried cooking method) / Product code: BKKHM**



- "Manufactured from AISI 304 stainless steel.
- "Body is taper type and 2 skinned.
- "Bottom 2 hp 240 rev/min , Cover 1.5 hp 100 rev / min engine available.
- "Working with steam injection on cooking.
- "There is 1 peeping 1 lighting glass on cover
- "Digital temperature display and engine protection in the control panel
- "Capacity is 50 kh-150 kg

**Kashkaval Trolley / Product code: BKDTA**

- "Manufactured from AISI 304 stainless steel.
- "Chassis 40x40x1, 5 mm box profile, shelves 1.5 mm stainless steel sheet
- "4 rotating wheels are available in stainless steel
- "63cmx150cmx150cm in size and is 4 shelves.



**Kashkaval Cheese Knitting Machine / Product code : BKDOPF**



"Manufactured from AISI 304 stainless steel.

"30 lt product Inlet hopper. Cheese don't to adhesion of through special design.

"Specially designed forming unit.

" ½" pneumatic valve indirect steam inlet.

"Machine consists of a total 4 units.

"In first unit, there are inlet hopper and two spirals

"In second unit, there are cheese cutting blade and cooling water. Cutting blade is pneumatic systems.

"In third unit, there is the band of roving knitted mesh.

"In fourth unit, collecting tank with briny water for cheese.

"1st and 2nd Unit engines have speed controller.

"500 kg/h capacity.

"Digital temperature display and control mechanism in the control panel, speed controller, engine protection available.



**Processed Kashkaval Production Line (with water cooking method)/ Product code : BKSH**



"Manufactured from AISI 304 stainless steel.

"500kg/h -750kg/h-1000kg/h capacities.

"Equipment have 3 electric engines. Cheese don't to adhesion of through special design.

"Equipment are heated with hot water and steam.

"Digital temperature display and control mechanism in the control panel, speed controller, engine protection and photocell system available.

**Kashkaval Infiltration Ship / Product code : BTST**



"Manufactured from AISI 304 stainless steel.

"Two pieces nested.

"Rotating wheels are available in stainless steel

"90cm x240cmx80cm dimensions.



#### **Kashkaval Preparation Machine / Product code : BKTDM**

"Manufactured from AISI 304 stainless steel

"Round type, vertical engine type

"Three blade for shred

"0.75 kW geared motor available

#### **Kashkaval Patterns / Product code : BKAKA**



"Made of suitable food grade plastics.

"Various sizes and shapes.

#### **Kashkaval Moulding Machine / Product code: BEKGM**



"Manufactured from AISI 304 stainless steel

"There are two spirals and spirals have speed controller. Cheese don't to adhesion of through special design.

"Single-piston or two-piston options. 1000 kg / h can be up to capacity.

"0.75 kW geared motor available.

"Digital temperature display and control mechanism in the control panel, speed controller, motor protection and photocell system available.

"Steam heated and automatically controlled heating.

#### **Kashkaval Packing and Vacuum Machine / Product code : BKAVM**

"Manufactured from AISI 304 stainless steel.

"Professional types and it has two chamber.

"3 hp vacuum engine and there are 4 wheels.





## Butter Units

Open Type Churn for Butter / Product code: BTAYM



"Manufactured from AISI 304 stainless steel.

"100 kg capacity. Butter don't to adhesion of through special design.

"2 hp geared motor available.

Butter Moulding / Product code: BTGFM



"Manufactured from AISI 304 stainless steel.

"0.55 kW geared motor available.

"It has two spiral. Butter don't to adhesion of through special design

"250g-500g-1000g in the size of the package is capable to do.



**Closed (Rotary) Type Churn for Butter / Product code: BTKYM**



- "Manufactured from AISI 304 stainless steel.
- "There is an option 250 kg and 500 kg capacity.
- "It operates under the rotation speed control device.
- "Special cover.
- "Cooling water fountains are available.

**Cooking Cream and Pasteurized Boiler with Scraper / Product code: BSKPPK**

- "Manufactured from AISI 304 stainless steel
- "From 200 liters up to 1000 liters have the option.
- " 3 skinned. High density polyurethane insulation.
- "Provides uniform cooking. Through scraper.
- "Digital temperature display and control mechanism in the control panel, speed controller available.
- "Adjustable feet are available.



## **Curd Units**

### **Decoction Boiler of Curd / Product code : BLKK**



"Manufactured from AISI 304 stainless steel

"2 tons capacity has the option of up to 6 tons.

"It have 3 skinned and heating and cooling.

"1 hp geared motor available.

"Conical base. 4" drain valve.

"Digital temperature display and control mechanism and motor protection in the control panel available.

### **infiltration of Curd Water and Press Cart / Product code: BLSSBA**

"Manufactured from AISI 304 stainless steel

"Consists of two vessels.

"4 rotating wheels are available in stainless steel

### **Curd Hanger with Boat / Product code : BTLAD**



"Manufactured from AISI 304 stainless steel.

"8 hooks are available from stainless steel.

"There is the boat of under for curd water.

### **Curd Press / Product code: BLORP**

"Manufactured from AISI 304 stainless steel.

"1200 kg pressure is applied to the piston pneumatic systems.



## CIP Units

**CIP Tank / Product code : BECT**



- "Manufactured from AISI 304-316 stainless steel.
- "In capacities from 600 liters to 5000 liters are available.
- "Insulated and non-insulated versions are available.
- "Temperature is automatically controlled
- "Are produced in sets of 3.

**CIP Pump / Product code : BCPO**



- "Manufactured from AISI 316 stainless steel.
- "5-10-20-30-40 ton / h are optional.
- "Sheathed in stainless.



## Agricultural Machinery

### Row Independent Maize Chopper / Product code : BIGDRUM



"The Row Independent Maize Chopper has a working width of 1,25m. and with its cutter and feeder drum it can chop two rows of maize at one pass. One of the most important specification of the machine is its foldable chassis. The chassis can be folded so that the machine stays behind of the tractor. By driving backwards the machine can open a way in the middle of the field in order to decrease the number of turns on the field and decrease the fuel consumption of tractor.

### Maize Chopper Single Row (Gearbox Driven) / Product code : MS12SL



"The MS12SL Maize Chopper is an ideal machine for small farms. The machine is connected to tractor by 3pt. hitch and the weight of the machine is supported by the support tyre. Drivetrain is made of a gearbox and pto shaft. The feeding unit consist of 2 feeding drums which cut the plant also. The cutting knives located on the drums provide a clean cut for the plant. Also there is a safety mechanism for excessive load.

The feeding system is driven by a closed maintenance free gearbox. The chopping unit is made of 12 knives in order to provided a cutting length of min 5mm.



**Maize Chopper Single Row (V-Belt Driven) / Product code : MC10X**



“The MC10X Maize Chopper is a result of many years of experience in the harvesting of silage maize. It is known for its high quality and convenient price. To get the best result from silage the maize harvester has to chop stems and cobs perfectly. Maize harvester's feeding system is designed to feed the flywheel at right angles for the best quality silage. The flywheel is equipped with 10 specially hardened knives revolving at nearly 1600 rpm. There are two feeder drums and two pressure rollers that control the feeding of the maize to the flywheel. One of the pressure rollers is spring loaded and toothed; the other one is not. The pressure rollers are vertically mounted right behind the feeder drums so that stems and cobs are always chopped at right angles. This is the secret of the machine's low power requirement and short length of chop.

**Vertical Mixer Feeder 3 Cubic Meter / Product code : FMV3**



“FMV 3 model mixer feeder is an ideal solution for farms with 20-60 animals. The simple, durable and lightweight construction of the machine makes it the best equipment for small dairy and cattle farms. The design of the vertical auger equipped with special designed cutting knives cuts the round and square bales at a short time and creates an homogeneous ratio mixed with other feed and additives. There are no dead spots because of the design of the auger and bucket so it is more hygienic compared to other mixers on the market. Also there is no feed left in the bucket after unloading.



#### **Vertical Mixer Feeder 5 Cubic Meter / Product code : FMV5**



“FMV 5 model mixer feeder is an ideal solution for farms with 60-80 animals. The simple, durable and lightweight construction of the machine makes it the best equipment for small dairy and cattle farms. The design of the vertical auger equipped with special designed cutting knives cuts the round and square bales at a short time and creates an homogeneous ratio mixed with other feed and additives. There are no dead spots because of the design of the auger and bucket so it is more hygienic compared to other mixers on the market. Also there is no feed left in the bucket after unloading. This special design with a durable gearbox makes a long life time and less power need compared to the horizontal mixer feeders.

#### **Vertical Mixer Feeder 8 Cubic Meter / Product code : FMV8**



“FMV 8S model mixer feeder is an ideal solution for farms with 80-120 animals. The simple, durable and lightweight construction of the machine makes it the best equipment for small dairy and cattle farms. The design of the vertical auger equipped with special designed and tungsten coated cutting knives cuts the round and square bales at a short time and creates an homogeneous ratio mixed with other feed and additives. There are no dead spots because of the design of the auger and bucket so it is more hygienic compared to other mixers on the market. Also there is no feed left in the bucket after unloading. This special design with a durable gearbox makes a long life time and less power need compared to the horizontal mixer feeders. The feeds can be weighed and rations can be prepared effectively with the optional electronic weighing system.





#### **Vertical Mixer Feeder 12 Cubic Meter Front Discharge/ Product code : FMV12**



"FMV 12F model mixer feeder is an ideal solution for farms with 120-150 animals. The simple, durable and lightweight construction of the machine makes it the best equipment for dairy and cattle farms. The design of the vertical auger equipped with special designed and tungsten coated cutting knives cuts the round and square bales at a short time and creates an homogeneous ratio mixed with other feed and additives. There are no dead spots because of the design of the auger and bucket so it is more hygienic compared to other mixers on the market. Also there is no feed left in the bucket after unloading. This special design with a durable gearbox makes a long life time and less power need compared to the horizontal mixer feeders. The feed can be weighed and rations can be prepared effectively with the optional electronic weighing system.

#### **Vertical Mixer Feeder 20 Cubic Meter Front Discharge/ Product code : FMV20**



"FMV 20F model mixer feeder is an ideal solution for farms above 200 animals. The simple, durable and lightweight construction of the machine makes it the best equipment for dairy and cattle farms. The design of the vertical auger equipped with special designed and tungsten coated cutting knives cuts the round and square bales at a short time and creates an homogeneous ratio mixed with other feed and additives. There are no dead spots because of the design of the auger and bucket so it is more hygienic compared to other mixers on the market. Also there is no feed left in the bucket after unloading. This special design with a durable gearbox makes a long life time and less power need compared to the horizontal mixer feeders. The feeds can be weighed and rations can be prepared effectively with the optional electronic weighing system.



#### **Manure Spreader 4 t. / Product code: FMGR 3**



“Manure spreader is designed for spreading the manure on the fields, garden and orchard. The chain conveyor carries the manure to the beater at the back of the machine and the manure is spread on the field homogenously. The low height of the machine is advantage for the orchard and vineyards. It is trailed without damaging the trees and grapes. The floor is made of plywood to provide a long life usage. The 4 speed strong gearbox and the strong chain provides an operation without trouble.

#### **Manure Spreader 10 t. / Product code: FMGR 10**



“FMGR10 has a capacity of 8,5 cubic meter and it can stand to weight of 10 tons of manure. The specially designed rubber suspension absorbs the vibration during operation and provides a better drive of tractor. Special designed vertical auger beaters provide even spreading of manure to the field and they are driven by the strong and durable gearbox. The floor is made of plywood in order to have a longer life and manure is conveyed to the beaters by special high strength chain.



#### **Liquid Manure Spreader / Product code : FST 8000**



Liquid manure spreader is designed to suck the slurry from the pool and spread to the land homogeneously.

Specially designed chassis and low frame provides a comfortable running in all kinds of lands with the wide-flotation tyres.

Through the optional sprinkling system the slurry is spread easily to where the machine can not reach. Hydraulic adjustable arm provides an easy sucking from all kind of slurry pool.

#### **Rotary Rake / Product code : FMR 440**



The hay rake provides a clean fodder without earth and stones, and a high quality very nutritious fodder. This will help the baling machine to easily create the bales and the bales free of foreign materials will make the animals healthier.



### **Bale Machine / Product code : EMS 3**



EMS 003 Bale Machine collects the stalk left in the field by the harvester thresher and steers it through the chopper and makes straw.

It's a portable machine developed with today's technology which packs straw into any kilo and size. This machine can also make clover bale.

Our machine provides high performance , high quality , widespread service opportunities and qualified employees to our farmers .

It makes bale with wheat , barley , oak , rye , vetch , sainfoin seed and clover after harvest . The machine gets its power from the tractor power take-off via shaft .It works fast and quietly and can be adjusted up and down with the help of the hydraulic system on the pickup so the user can easily move it according to the field and get maximum product.

The tractor has been designed to use minimum power . EMS 003 Bale Machine was designed after detailed research by experienced staff with powerful materials .

### **Integrated Roll Bale Bale Making and Packing Machine / Product code: EMS 900 S**



EMS 900 S Roller Bale and Bale Packaging Machine pulled by a tractor , gets its movement from the power take -off is a machine developed with today's technology which collects all fresh and dry herbs, barley, oat, vetch, clover etc. cylindrically bales them and can bag them in the field .

Roller Bale and Bale Packaging Machine provides plants used as feed to be wrapped and bagged after dried . When bagged fresh , because the bagged feed is silage in a 5% oxygenated atmosphere it gets into fermentation with the milk acid in it and this can increase the nutrition rate to about 300% . The climate effect on silage is far more lower than other applications .

Some feed that aren't much preferred or aren't so good for animals can be dried and after the silage process can be given to animals. Another fact is that it provides the silage material to leave the field



faster. If silage feed is stored properly it can be kept for 2-3 years. And this eliminates the expenditure of getting animal feed from abroad. It reduces the time in silage . EMS 900 S is a two in one machine so it saves expenditure .

### **Milking Systems / Product code : BRSSS**

