



MELTAR

www.meltarmakina.com



Tel&Fax: +90 212 352 71 62
GSM +90 533 682 54 41



meltarmakina@gmail.com
uniforpack@gmail.com
uni4pack@gmail.com



info@meltarmakina.com
info@uniforpack.com
info@uni4pack.com



ABOUT US

Our company establishes turkey food production facilities in the light of the knowledge and experience gained from various food productions.

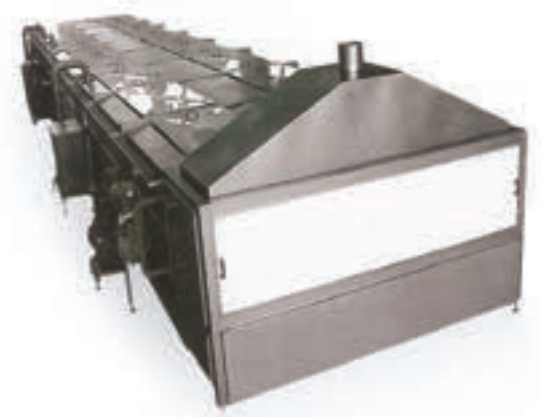
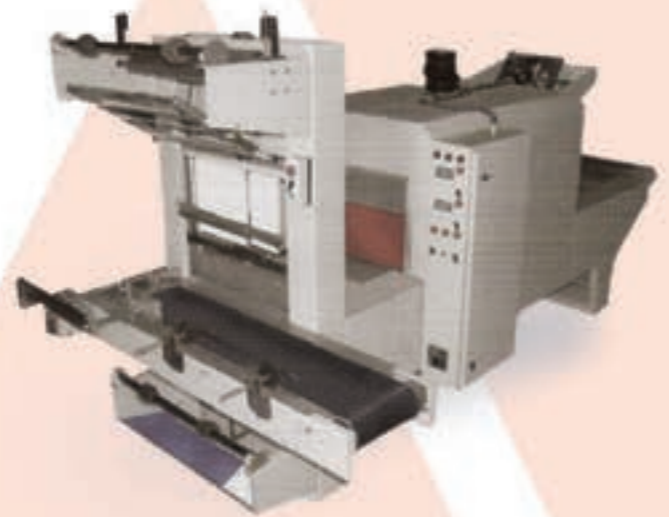
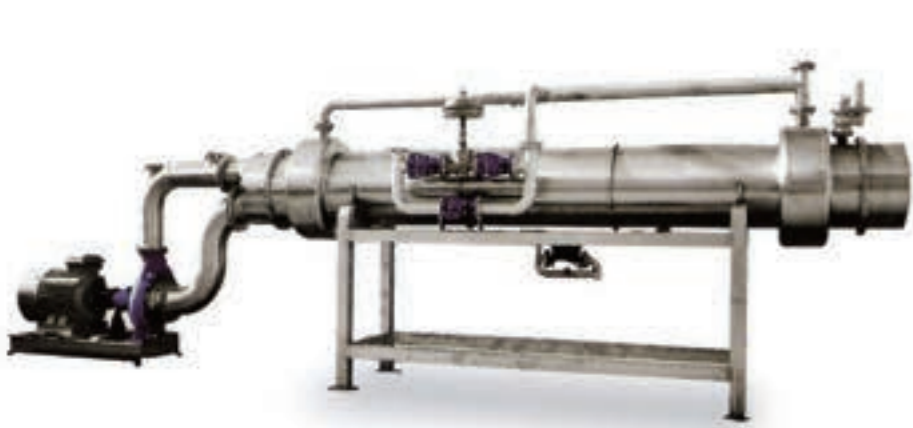
Numerous facilities we deliver at home and abroad operate with customer satisfaction.

Our services include project consultancy, turn-key facility installation, product development and recipe preparation.

Production in our turnkey projects
machines and equipment that we do not build,
We supply it through domestic and foreign companies.

Our company provides the shortest service after installation and spare parts
to its customers in a short time.v

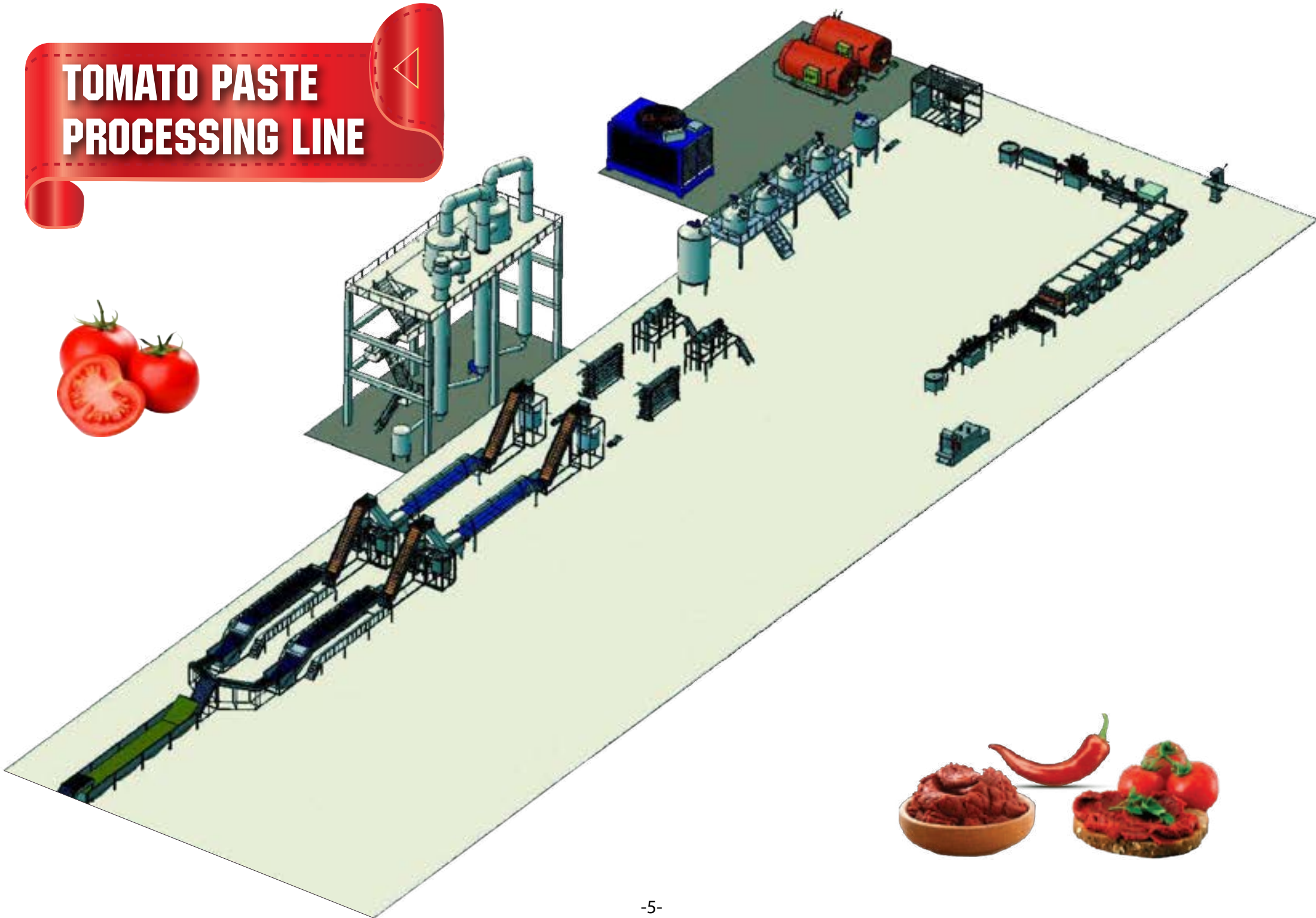




MELTARM

www.meltarmaking.com

TOMATO PASTE PROCESSING LINE



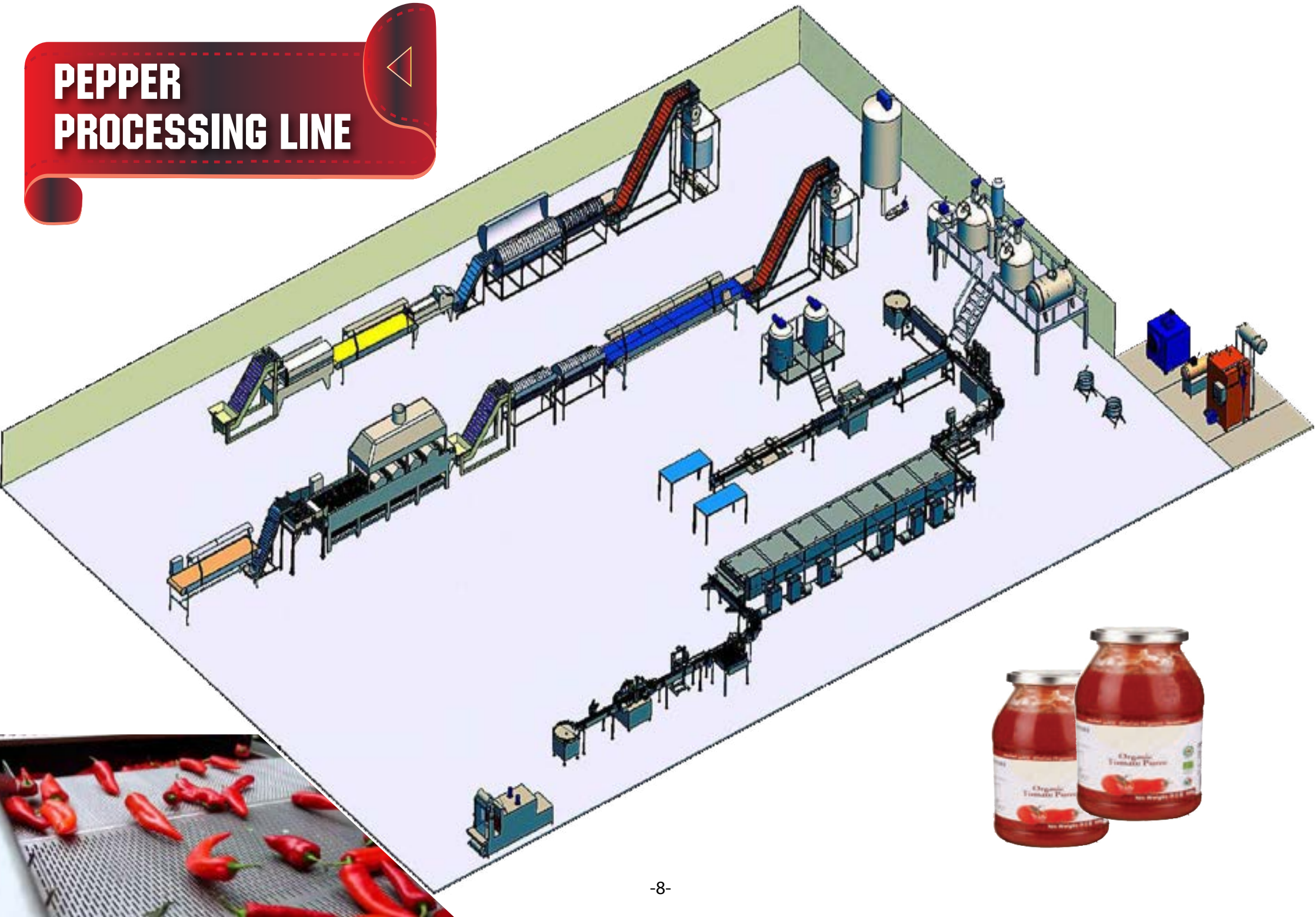
FRUIT JUICE PROCESSING LINE



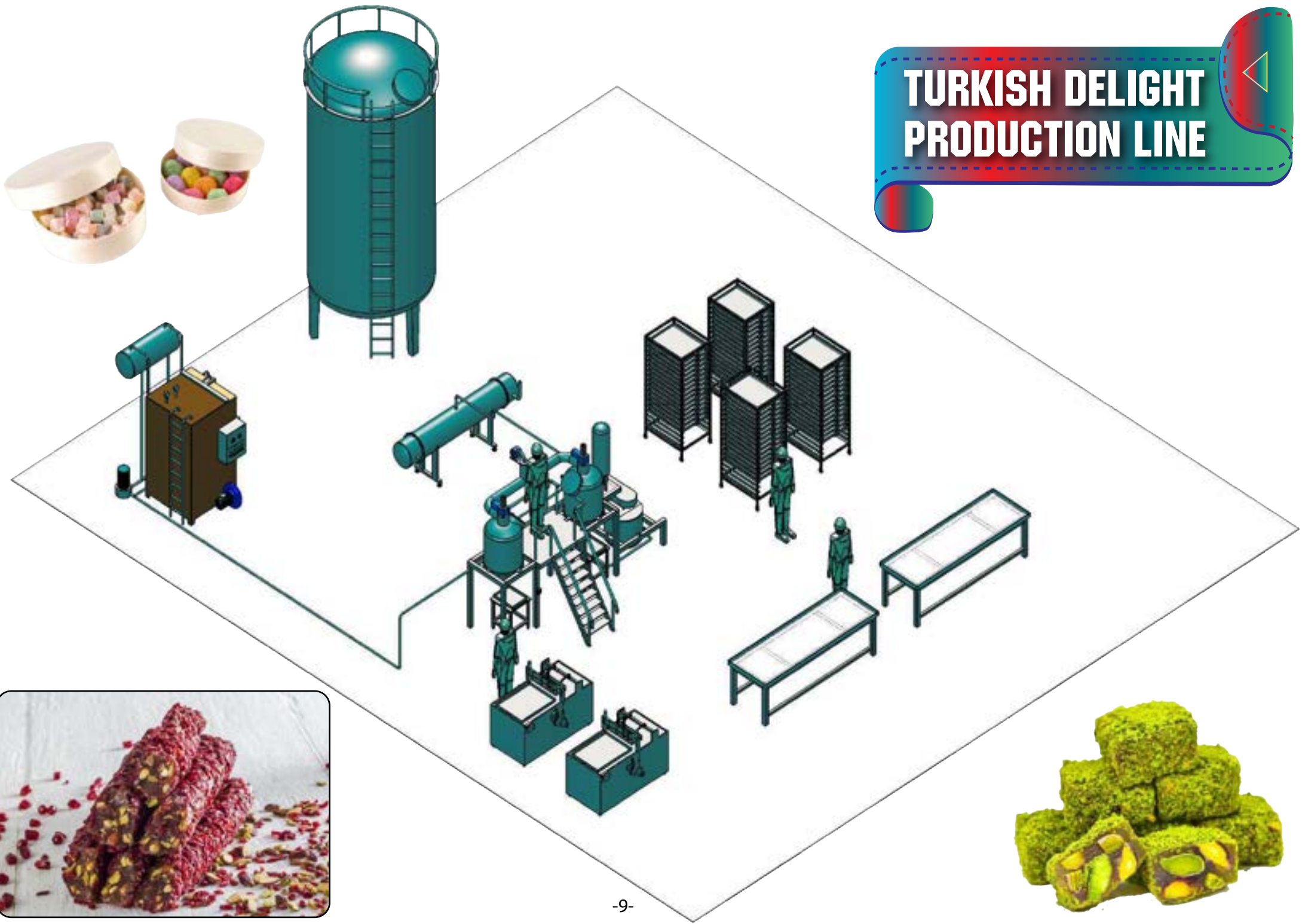
DATES PROCESSING LINE



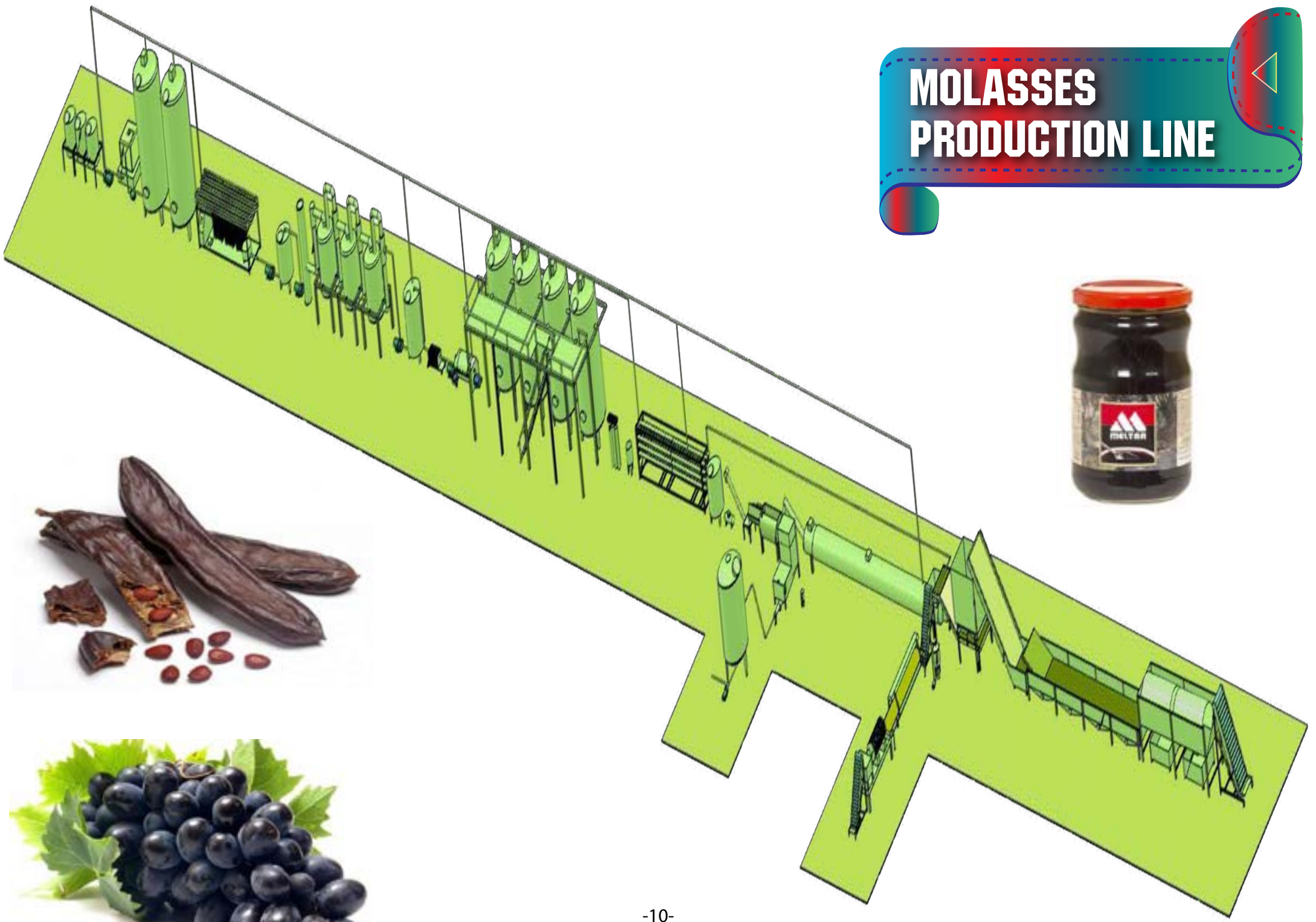
PEPPER PROCESSING LINE



TURKISH DELIGHT PRODUCTION LINE



MOLASSES PRODUCTION LINE



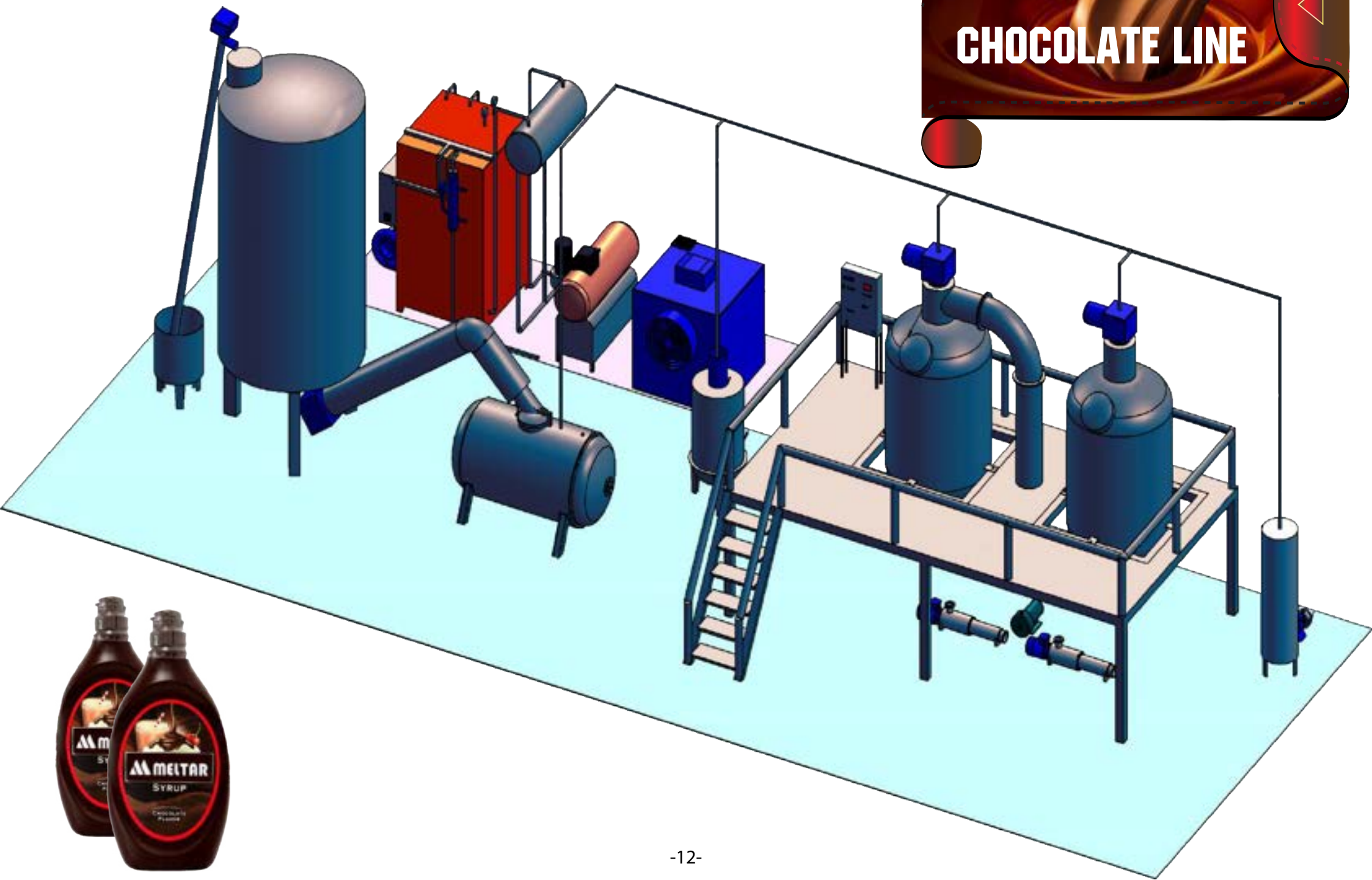


JAM- MARMALADE PRODUCTION LINE

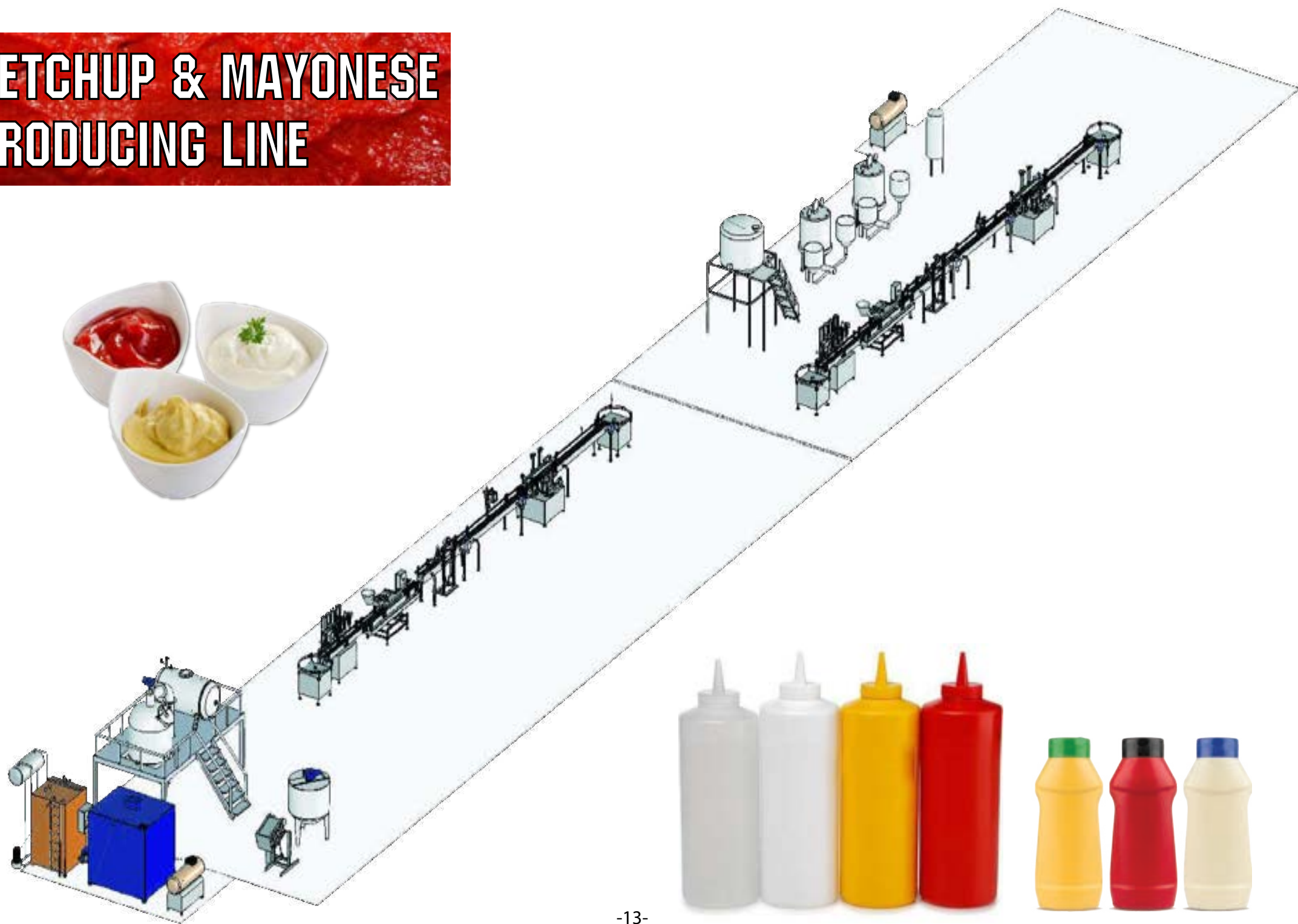
- 1- Premix Boiler
- 2- Vacuum Boiler
- 3- Filling Boiler
- 4- Pectin Preparation Tank
- 5- Dosing Tank
- 6- Rotary Table For Feeding.
- 7- Jar Sterilizing Tunnel
- 8- Filling Machine
- 9- Capping Machine
- 10- Pasteurizing & Cooling Tunnel
- 11- Drying
- 12- Collecting for Controlling.
- 13- Safety Sleeve Machine.
- 14- Labelling Machine
- 15- Date & Coddling Machine
- 16- Collecting Table
- 17- Steam Boiler
- 18- Glicose Heating Exchanger
- 19- Cooling Tower
- 20- Glycose Tank
- 21- Glycose Pump



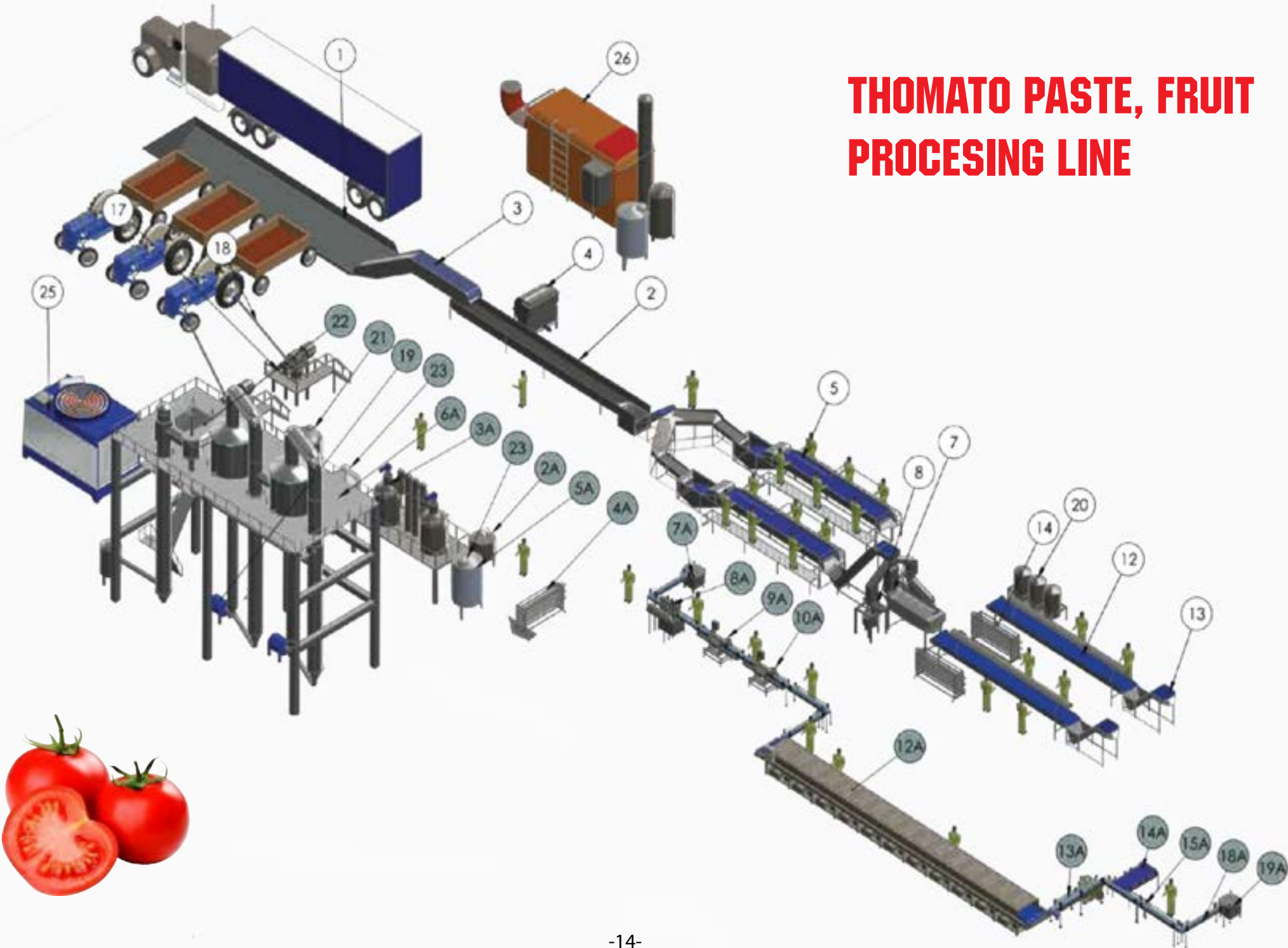
CHOCOLATE LINE



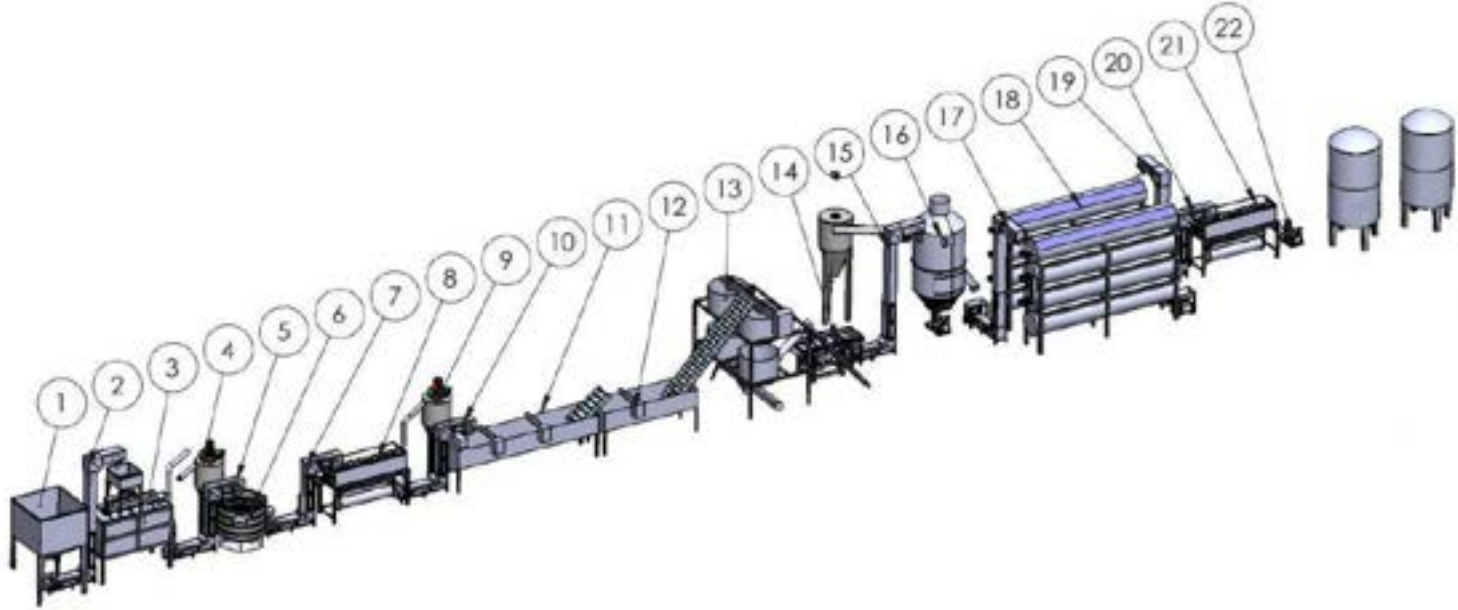
KETCHUP & MAYONESE PRODUCING LINE



THOMATO PASTE, FRUIT PROGESING LINE



1 TON / SAAT SUSAM İŞLEME TAHİN HATTI 1 TON / H SESAME PROCESSING TAHINI LINE



ÜRETİM HATTI / PROCESSING LINE

- 1- SUSAM BUNKERİ / SESAME TANK
- 2- ELEVATÖR / ELEVATOR
- 3- SUSAM KABUK SOYMA MAKİNESİ / SESAME PEELING MACHINE
- 4- SİKLON / SYCLON
- 5- ELEVATÖR / ELEVATOR
- 6- DAİRESEL ELEK / CIRCULAR SIEVE
- 7- ELEVATÖR / ELEVATOR
- 8- SUSAM KEPEK ALMA MAKİNESİ / SESAME BRAN TAKING MACHINE
- 9- SİKLON / SYCLON
- 10- ELEVATÖR / ELEVATOR
- 11- SALAMURA HAVUZU 1 / BRINE POOL 1
- 12- SALAMURA HAVUZU 2 / BRINE POOL 2
- 13- SUSAM DURULAMA ÜNİTESİ / SESAME RINSING UNIT
- 14- SARKAK ELEK / VIBRATING SIEVE
- 15- ELEVATÖR / ELEVATOR
- 16- SUSAM KURUTMA MAKİNESİ / SESAME DRYING MACHINE
- 17- ELEVATÖR / ELEVATOR
- 18- SUSAM KAVURMA ÜNİTESİ (8'Lİ) / SESAME ROASTING UNIT (8 STEP)
- 19- ELEVATÖR / ELEVATOR
- 20- ELEVATÖR / ELEVATOR
- 21- SUSAM SOĞUTMA MAKİNESİ / SESAME COOLING MACHINE
- 22- HAVALI SUSAM TAŞIMA SİSTEMİ / SESAME TRANSFER SYSTEM WITH AIR



HALVA COOKERS



TUBE IN TUBE HEAT EXCHANGER



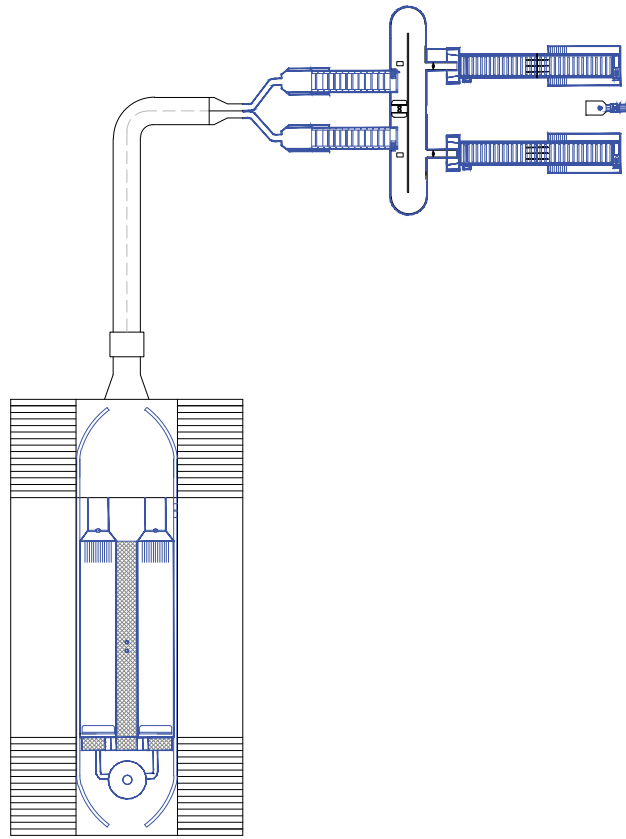
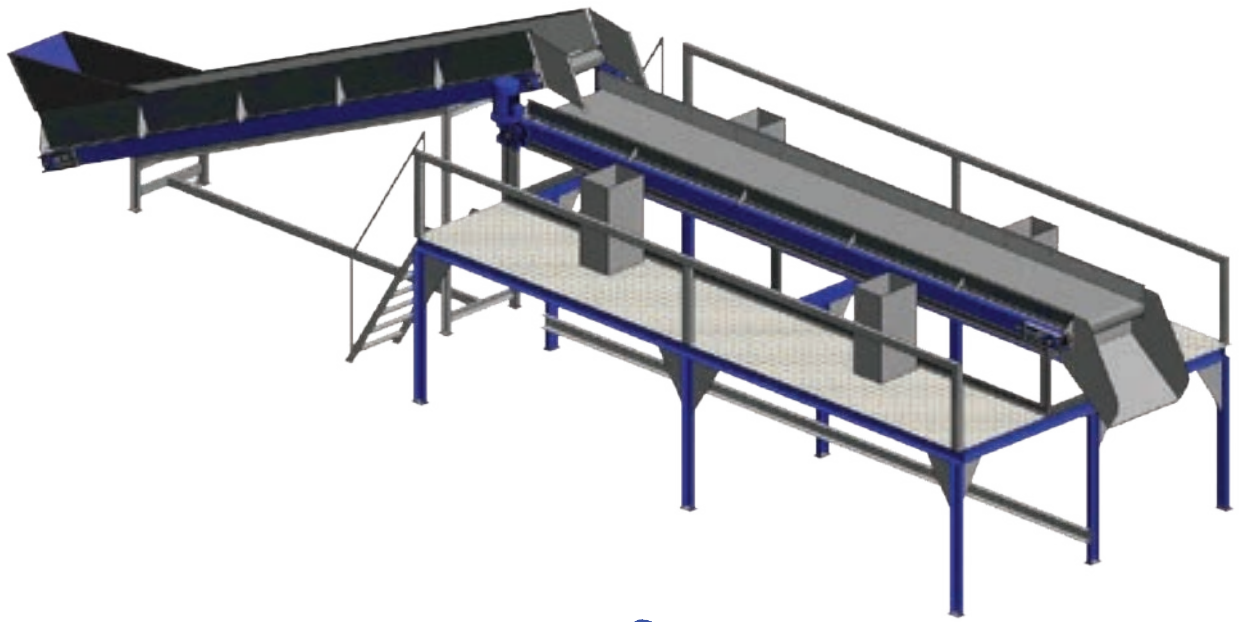
RECEIVING AND WASHING



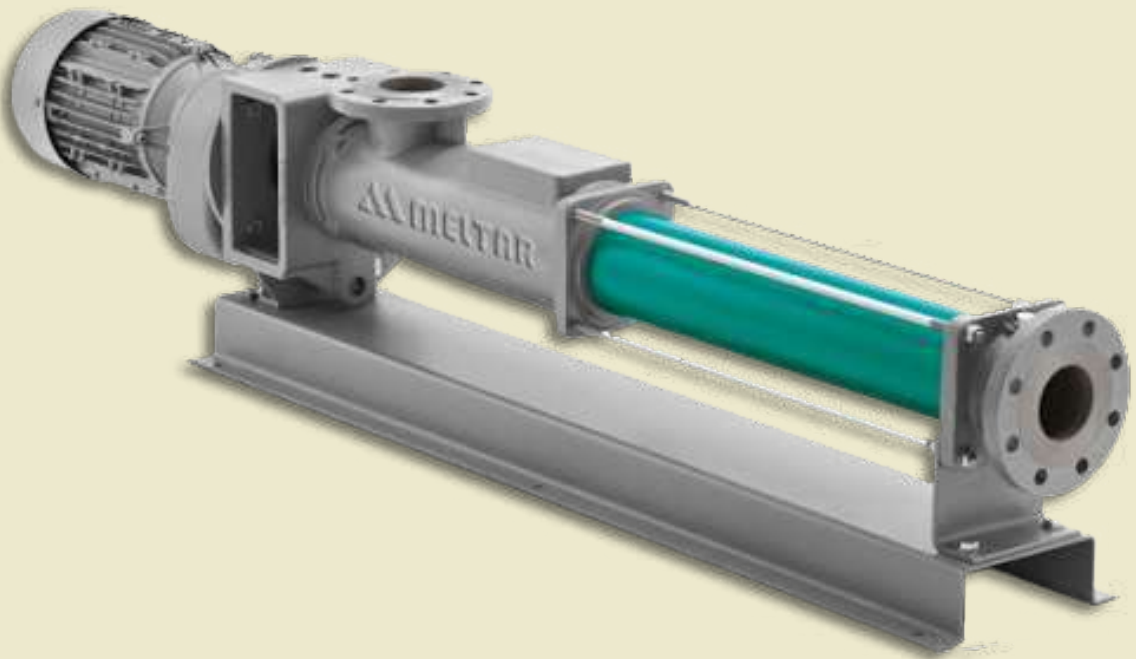
RECEIVING AND WASHING



SORTING TABLE





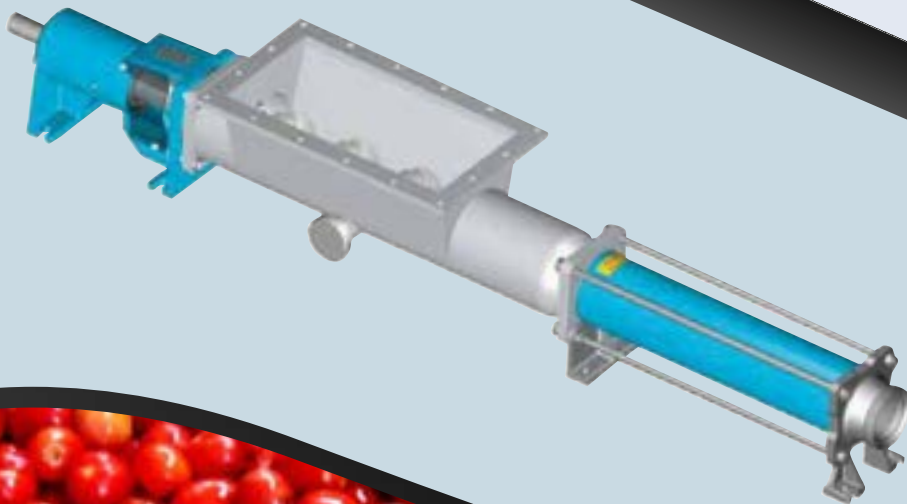
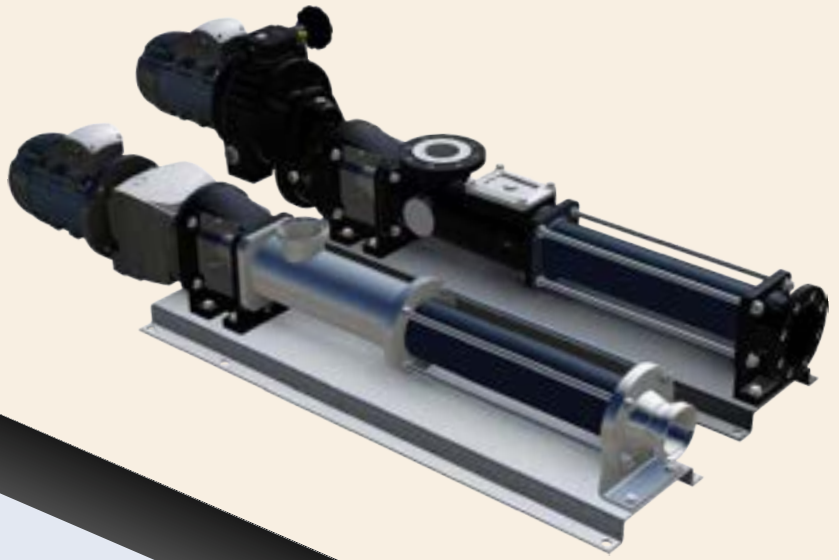


Technical Specifications:

- 1- Machine Capacity: 2-30 tons/h
- 2- For High Viscose Material
- 3- Feeding With Helix
- 4- Platform in S.S. or Cast Iron

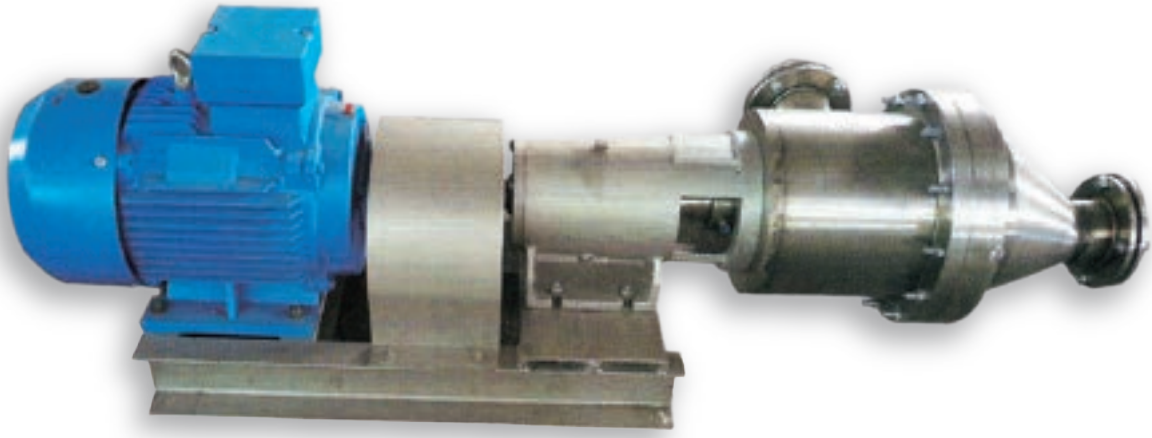


M
O
N
O
P
U
M
P





Crusher Machine



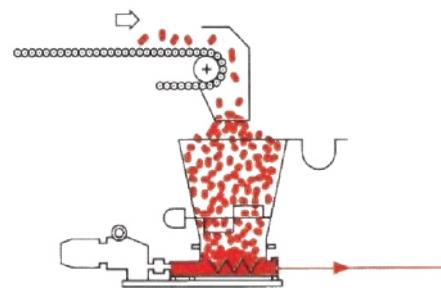
Technical Specifications:

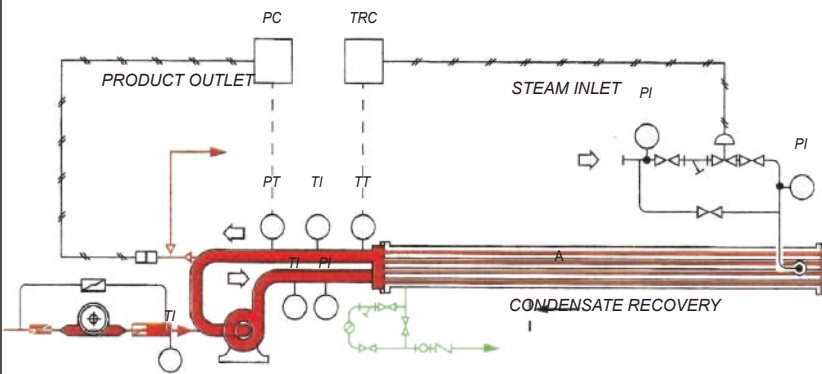
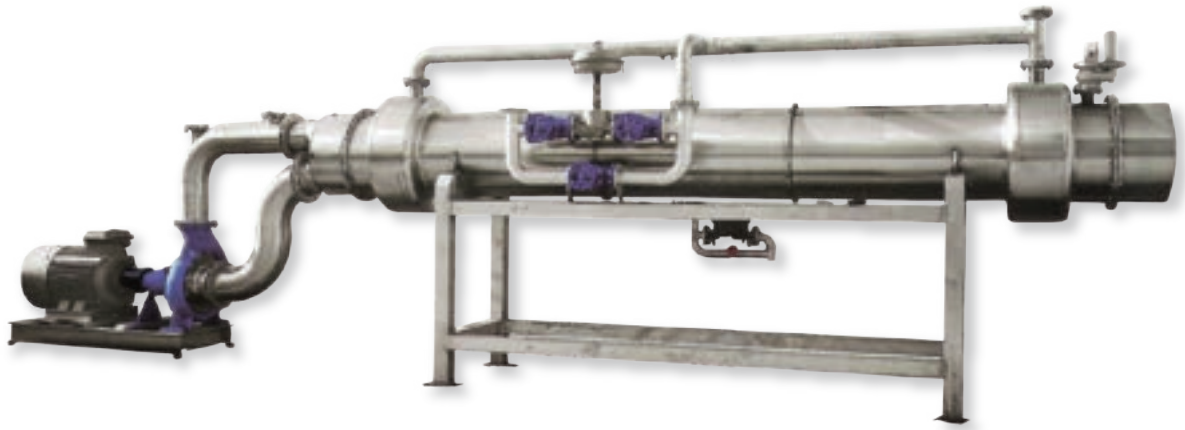
1- Machine Capacity: 1-30 tons/h

2- Platform in S.S. or Cast Iron



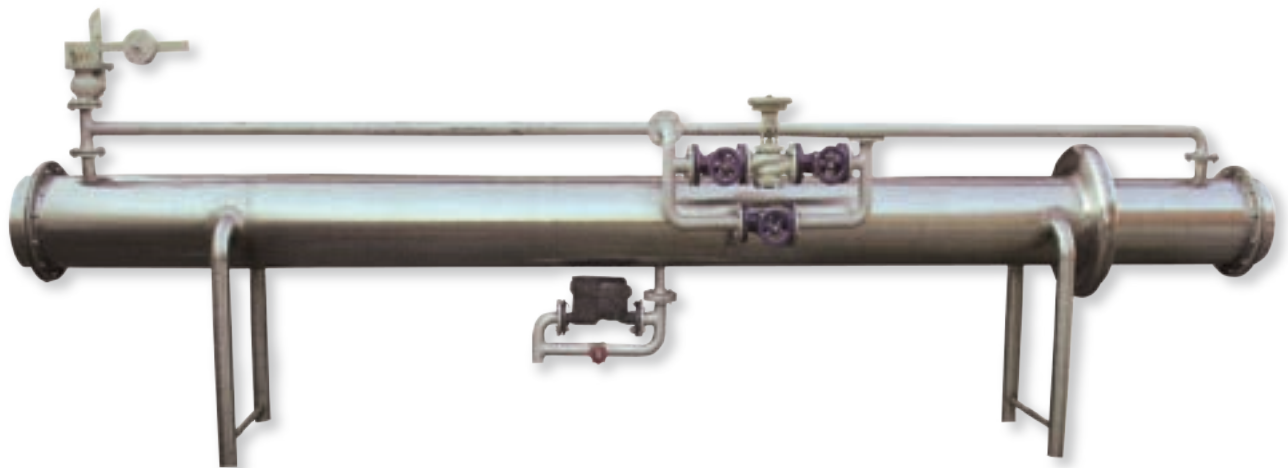
ROLLER SORTING BELT





Technical Specifications:

- 1 - Machine Dimensions: a*b*h=1038cm*153cm*290cm
- 2 - Machine Capacity : 500~800 tons/24h
- 3 - Platform In Cast Iron
- 4 - Automatic Control Temp.

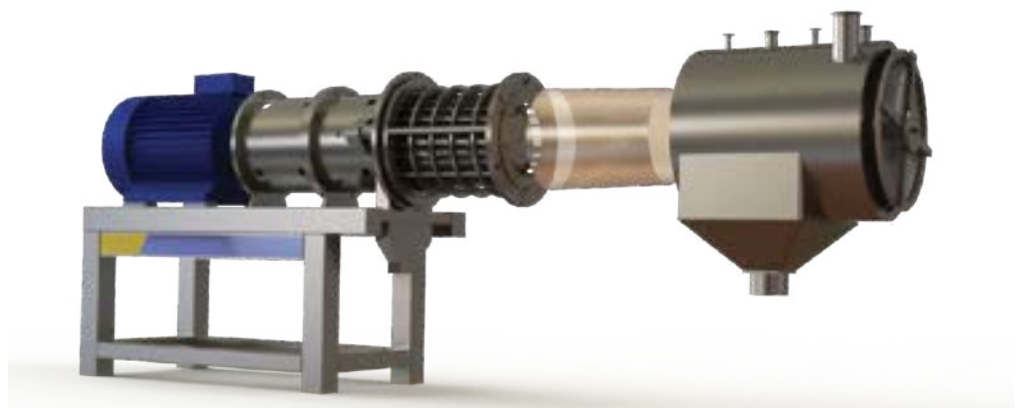


Technical Specifications:

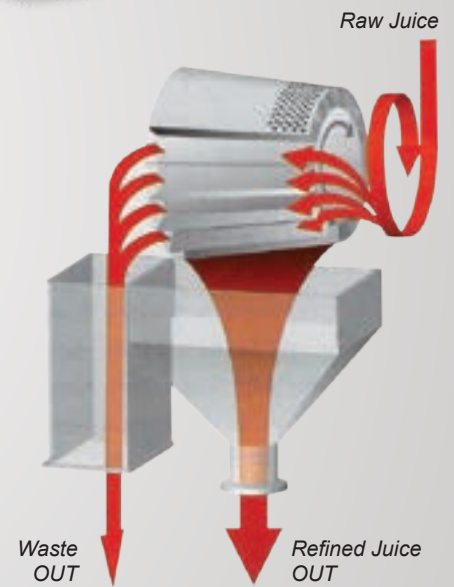
- 1 - Machine Dimensions: a*b*h=1038cm*153cm*290cm
- 2 - Machine Capacity : 500~800 tons/24h
- 3 - Platform In Cast Iron
- 4 - Automatic Control Temp.



H
O
T
&
C
O
L
D
B
R
E
A
K



P
U
L
P
E
R
&
F
I
N
I
S
H
E
R



Technical Specifications:

1- Machine Dimensions: a*b*h=250cm*78cm*175cm

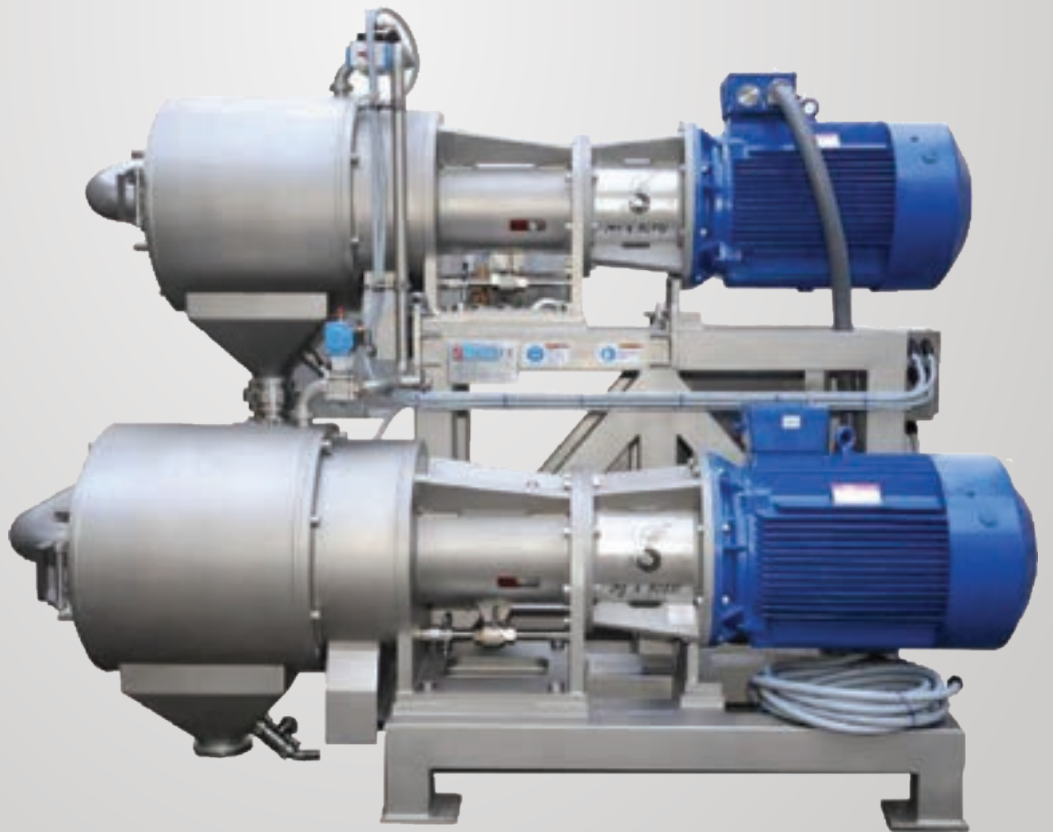
2- Platform in S.S. or Cast Iron

3- Power Consumption ..55kw

4- R.P.M. 1500



P
U
L
P
E
R
&
F
I
N
I
S
H
E
R



AVAPORATOR 500-600 TON / 24/H



AVAPORATOR 1200 TON / 24/H



BATCH SYSTEM EVAPORATOR

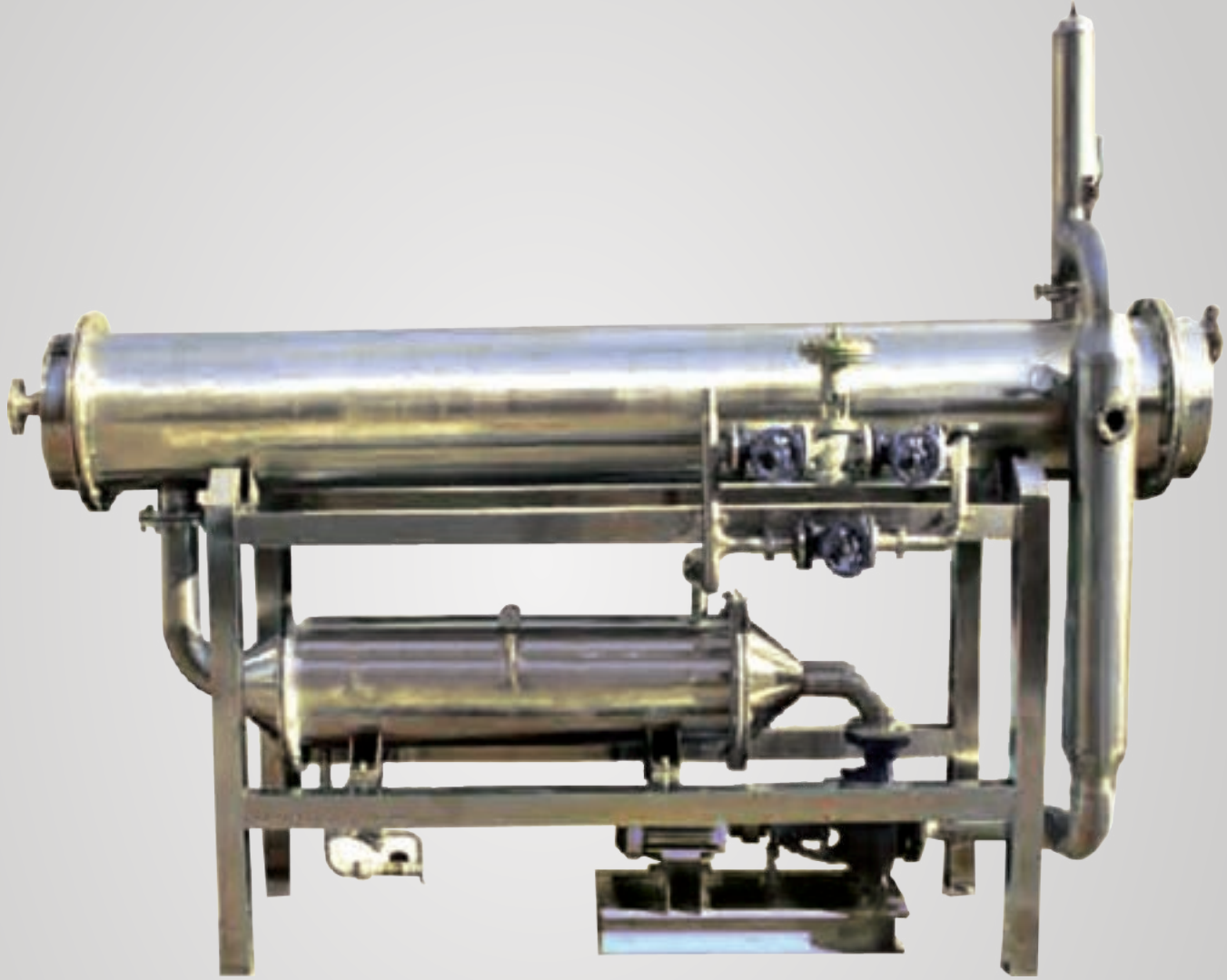


**T
U
B
E
I
N
T
U
B
E
P
A
S
T
E
U
R
I
Z
E
R**

TUBE-IN-TUBE PASTEURIZER



T
U
B
E
I
N
T
U
B
E
P
A
S
T
E
U
R
I
Z
E
R

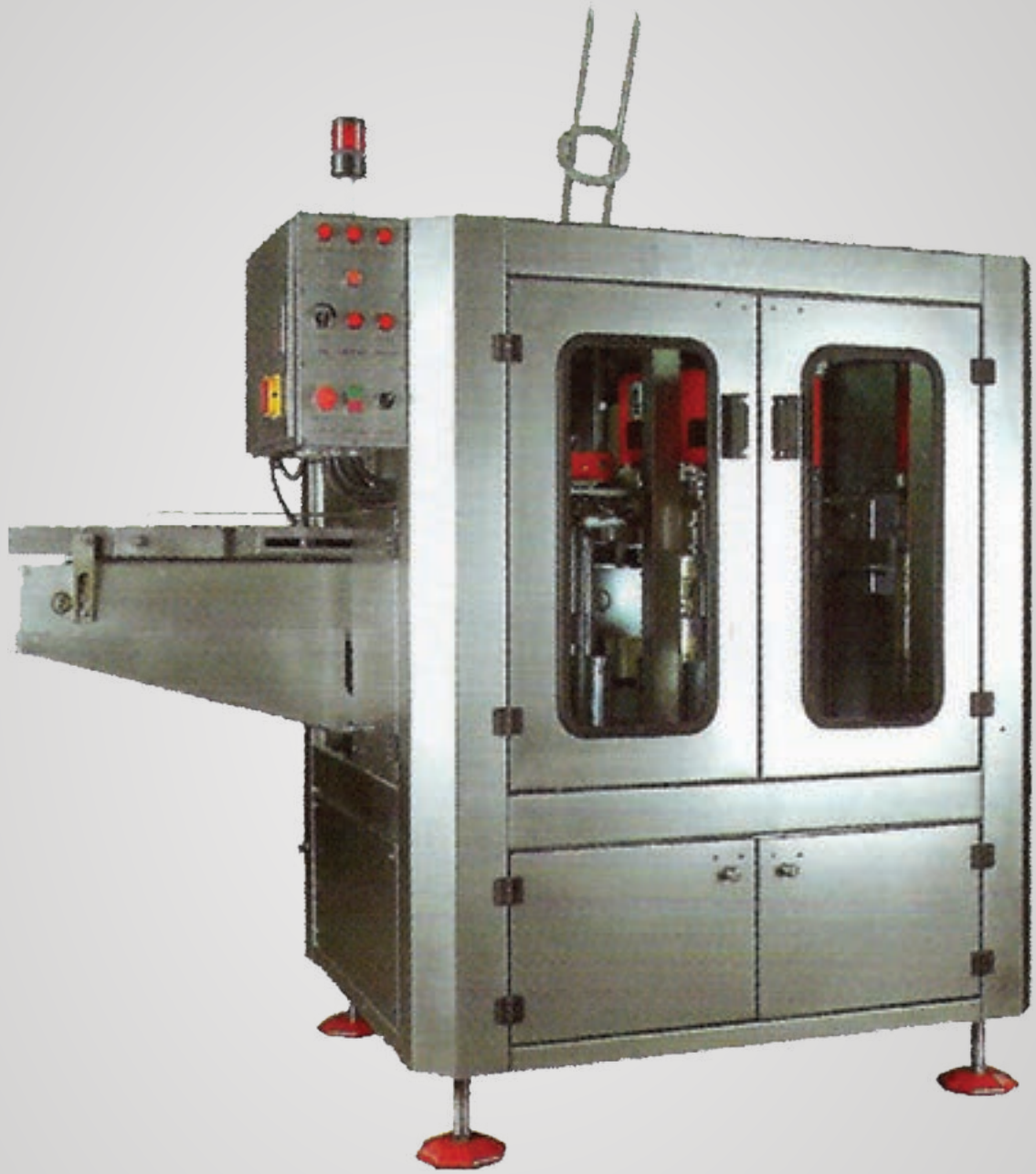




Filler Machine Production Hal

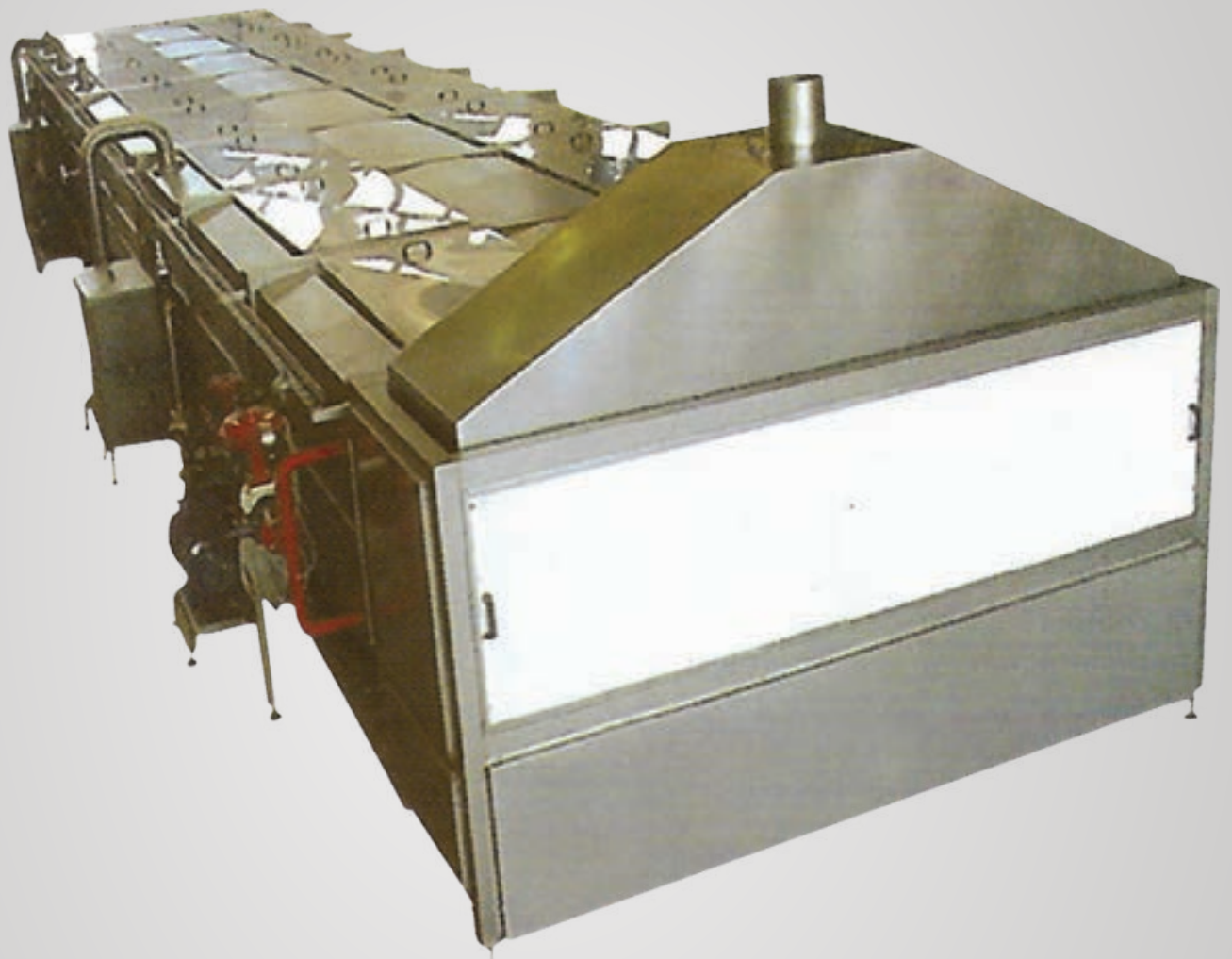


4 - 6 HEAD SEAMER

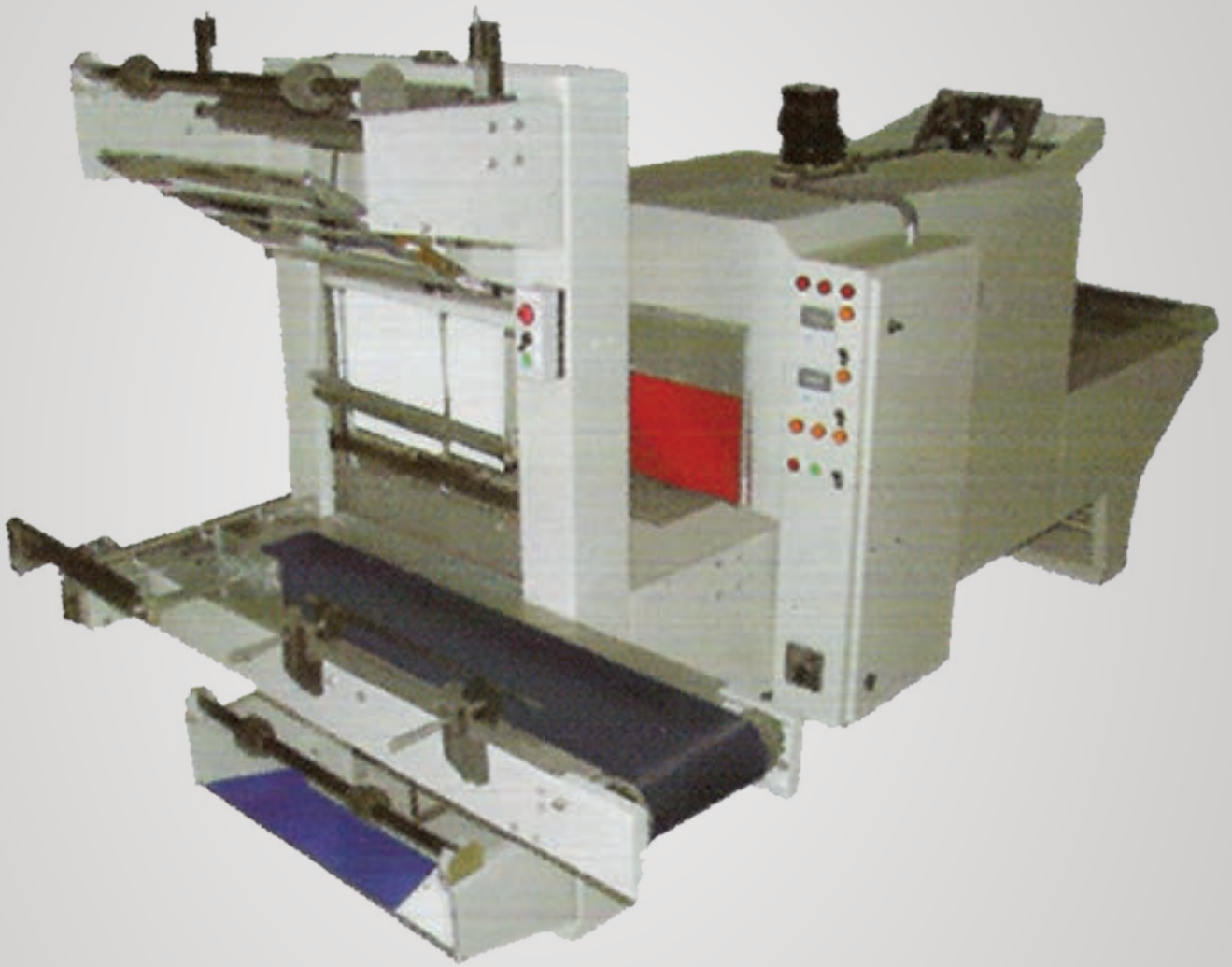


**T
U
N
N
E
L

P
A
S
T
E
R
I
Z
E
R**



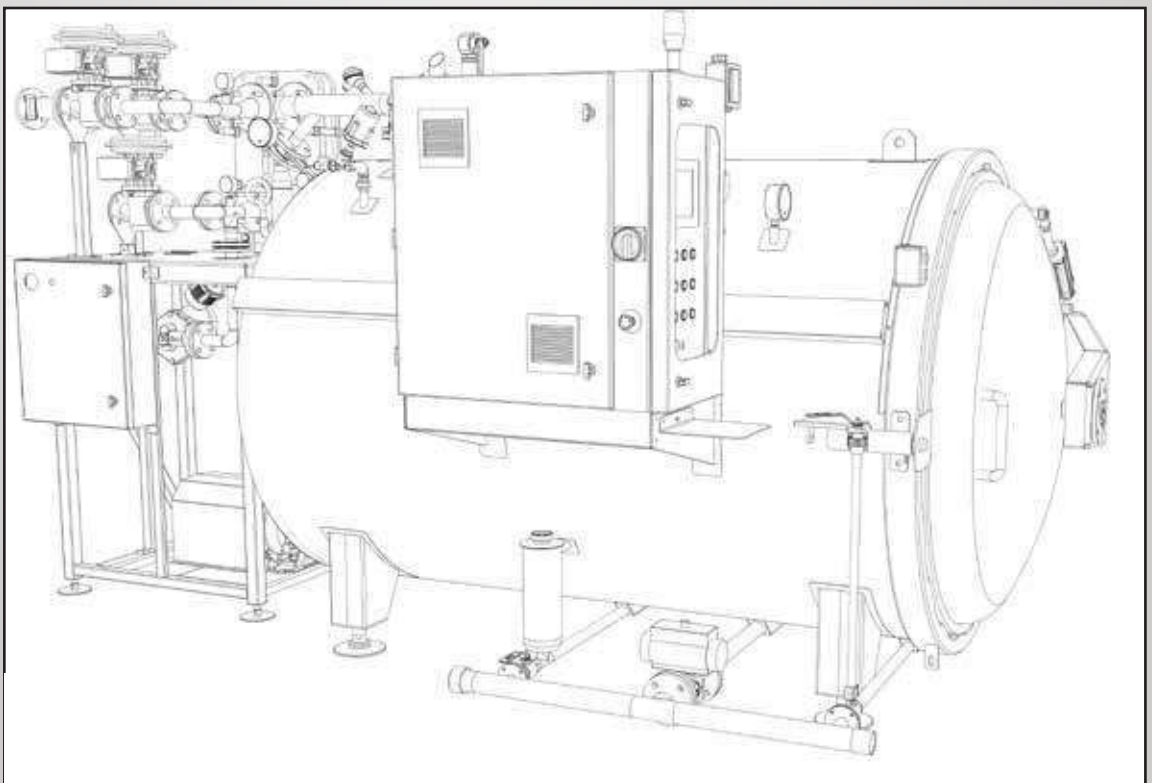
S
H
R
I
N
K
P
A
C
K



M
E
T
A
L
D
E
T
E
C
T
O
R



OTOKLAV





MELTAR

www.meltarmakina.com



Tel&Fax: +90 212 352 71 62
GSM +90 533 682 54 41



meltarmakina@gmail.com
uniforpack@gmail.com
uni4pack@gmail.com



info@meltarmakina.com
info@uniforpack.com
info@uni4pack.com