



[www.gatemarine.com](http://www.gatemarine.com)

---

The logo for 'sonar sea' is displayed in white lowercase letters on an orange rectangular background. The word 'sonar' is positioned above 'sea', and a small white asterisk is located to the right of the 'a' in 'sea'.

sonar  
sea\*

GEOPHYSICS AND HYDROGRAPHIC MEASUREMENTS  
GEOTECHNICS AND OCEANOGRAPHIC MEASUREMENTS  
ROV OPERATIONS  
CABLE AND PIPE LINE SURVEY

The logo for 'GTM GATEMARINE' is shown in white. 'GTM' is a large, bold, stylized font, and 'GATEMARINE' is in a smaller, all-caps sans-serif font directly below it.

GTM  
GATEMARINE

CONSULTANCY AND DESIGN  
SUBMARINE CABLE INSTALLATION AND BURIAL  
TURNKEY SUBMARINE CABLE PROJECT  
MAINTENANCE, REPAIR & RECOVERY OF SUBMARINE CABLE  
SUBMARINE CABLE PROTECTION MATERIAL PRODUCTION  
JOINT CLOSURE FOR SUBMARINE CABLE

A horizontal banner image with a blue tint. It shows a large circular structure, possibly a cable reel or a wellhead, with several people standing on a platform around it. The word 'GATEMARINE' is overlaid in white, all-caps, sans-serif font.

GATEMARINE

The logo for 'GATEMARINE PRODUCTION' is displayed in white. 'GATEMARINE' is in a large, all-caps sans-serif font, and 'PRODUCTION' is in a smaller, all-caps sans-serif font below it. The background is a blue-tinted image of electronic equipment.

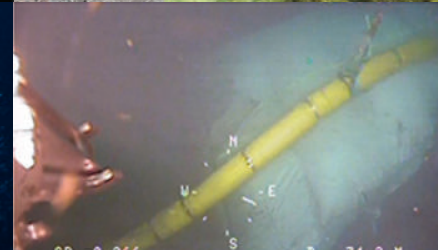
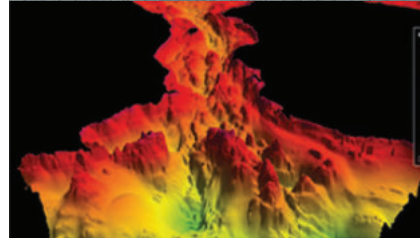
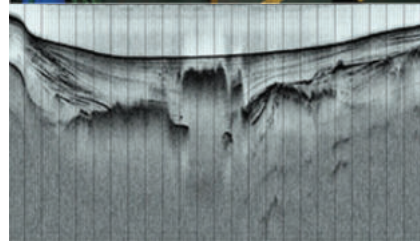
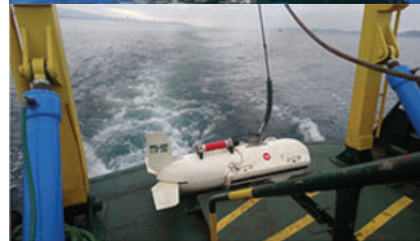
GATEMARINE  
PRODUCTION

BUOY AND BUOY EQUIPMENT PRODUCTION  
NAVIGATIONAL AIDS PRODUCTION  
MARINE ELECTRONICS SPECIAL PRODUCTION

## MARINE RESEARCH & SURVEY

Gatamarine-III is the most advanced research vessels, equipped with high-tech infrastructure of marine electronics world leader brands such as Kongsberg, Sonardyne, Teledyne, Veripos, belonging to private companies in Turkey.

Sonarsea provides hydrographic, oceanographic, geological, geotechnical, geophysical and environmental underwater surveys with expert engineers.





GATEMARINE

## CABLE LAYING / MAINTENANCE & REPAIR

GATEMARINE carries out all underwater projects including the installation, maintenance and repair of fiber optic and energy cables with its cable laying vessels, special equipment and experienced engineers.

Garganey (Ship) is designed to make demanding submarine cable projects with technological equipment such as precise positioning systems, 300 tons capacity Turn Table and cable tensioner (real-time tension control powerful hydraulic system that provides controlled laying of underwater cables)



[www.gatemarine.com](http://www.gatemarine.com)



# GATEMARINE

PRODUCTION

## PRODUCTION

GATEMARINE specializes in submarine cable protection systems, crossover products, joint closure for fiber optic and energy cable, buoys and marine electronics. Joint closure for fiber optic and energy cable developed by Gatemarine Engineers are used in more than 100 projects in Turkey.

GTMcom specializes in maritime equipment such as articulated protection pipes, polyurethane cable protection, special production piggyback saddles for pipelines, data collection units, smart marine led lights, serial communication converters



## LOCATIONS

GATEMARINE has been providing services since 2006 with its production and maintenance workshops, submarine cable warehouse, R&D offices and 8 offices located in **Bandırma / Balıkesir, Erdek / Balıkesir, Bornova / İzmir, Urla / İzmir and Karaköy / İstanbul ( Head office )**.





## REFERENCES

GATEMARINE is the leading company on submarine cable installation and engineering service with successfully accomplished more than 300 kilometers of submarine cable installation and 120 turnkey project in Turkey. All subsea infrastructure of leading brands of the telecommunications sector in Turkey is under protection by the Gatemarine with maintenance and repair contracts.

Telecommunication companies included in our Maintenance & Repair contract;

Energy companies that we have realized turnkey submarine cable installations projects;





[www.gatemarine.com](http://www.gatemarine.com)

---