

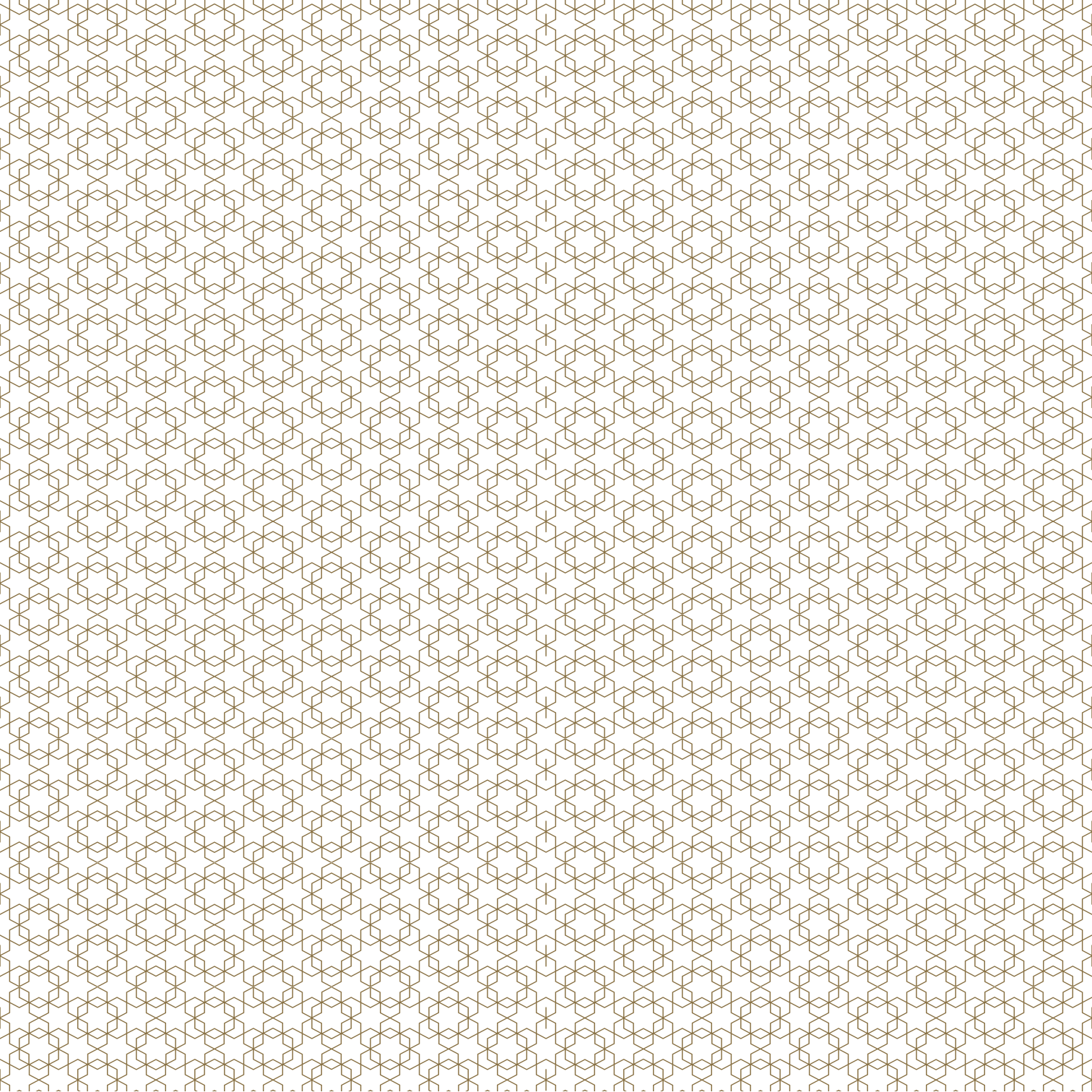
alko®

CATALOGUE OF

Happiness

2 0 2 0







**TURKISH
DELIGHT
SERIES**

Sultan Delights
Classic Delights
Special Delights
Dipped Delights

Flute Delights
Mini Delights
Fruit Flavoured Delights
Cezerye



**FLOSS HALVA
SERIES**

Classic Floss Halva
Pulled Halva

Saray Halva
Met Halva



**CONFECTIONERY
SERIES**

Akide (Hard) Candy
Cream Candy

Jelly Candy
Candied Chestnut



**CHOCOLATE
SERIES**

Madlens
Hand-made Beyoğlu
Dragées
Couverture-Praline
Baton Chocolate

Extra Chocolates
Pebble - Chocolate Dragées
Almond Candy
Roche Chocolates

HALVAS



Tahini Halva
Summer Halva

Sesame Halva
Foam Halva

JAMS



Traditional Jams

Diabetic Jams

TAHINI MOLASSES POPPYSEEDS



Tahini
Molasses

Spreadable Poppyseed Paste
Bakeable Poppyseed

PACKAGED PRODUCT GROUPS





HALVAS

alko[®]
CONFECTIONERY



HALVAS
Tahini Halva



Plain



Cacao



Pistachio



Plain Summer Halva



Cacao Plain Halva



Foam Halva

alko[®]
CONFECTIONERY

HALVAS
Tahini Halva



Crispy Sesame Halva



Sesame Halva



| | | | |
|------------|--------------------------------|------|------------------|
| ALK05-0001 | Tahini Halva (Plain) | 200g | 869 1808 0002 35 |
| ALK05-0002 | Tahini Halva (Cacao) | 200g | 869 1808 0002 42 |
| ALK05-0003 | Tahini Halva (Pistachio) | 200g | 869 1808 0002 59 |
| ALK05-0004 | Tahini Halva (Plain) | 400g | 869 1808 0002 66 |
| ALK05-0005 | Tahini Halva (Cacao) | 400g | 869 1808 0002 73 |
| ALK05-0006 | Tahini Halva (Pistachio) | 400g | 869 1808 0002 80 |
| ALK05-0007 | Tahini Halva (Plain) | 800g | 869 1808 0002 97 |
| ALK05-0008 | Tahini Halva (Cacao) | 800g | 869 1808 0003 03 |
| ALK05-0009 | Tahini Halva (Pistachio) | 800g | 869 1808 0003 10 |
| ALK05-0010 | Tahini Halva (Plain) | 3 KG | 869 1808 0003 34 |
| ALK05-0011 | Tahini Halva (Cacao) | 3 KG | 869 1808 0003 41 |
| ALK05-0012 | Tahini Halva (Pistachio) | 3 KG | 869 1808 0003 58 |
| ALK05-0022 | Block Tahini Halva (Plain) | KG | |
| ALK05-0023 | Block Tahini Halva (Cacao) | KG | |
| ALK05-0024 | Block Tahini Halva (Pistachio) | KG | |





| | | | |
|------------|-------------------------------|------|------------------|
| ALK05-0016 | Tray Tahini Halva (Plain) | 750g | 869 1808 0006 00 |
| ALK05-0017 | Tray Tahini Halva (Cacao) | 750g | 869 1808 0006 17 |
| ALK05-0018 | Tray Tahini Halva (Pistachio) | 750g | 869 1808 0006 24 |
| ALK05-0019 | Tray Tahini Halva (Plain) | 6 KG | 869 1808 0008 60 |
| ALK05-0020 | Tray Tahini Halva (Cacao) | 6 KG | 869 1808 0008 77 |
| ALK05-0021 | Tray Tahini Halva (Pistachio) | 6 KG | 869 1808 000884 |

| | | | |
|------------|--------------------------------|------|------------------|
| ALK05-0013 | Round Tahini Halva (Plain) | 500g | 869 1808 0004 33 |
| ALK05-0014 | Round Tahini Halva (Cacao) | 500g | 869 1808 0004 40 |
| ALK05-0015 | Round Tahini Halva (Pistachio) | 500g | 869 1808 0004 57 |





alko
TARUMLU SUKANDAN
EŞER
TAHİN

alko
Tahin

alko
Tahin Pek
DOĞAL
LİF & ENERJİ
KAYNAĞI



PACKAGED PRODUCTS



| | | | |
|------------|---------------------------------|----------|------------------|
| ALK05-0101 | Foam Halva | 200g | 869 1808 0010 96 |
| ALK05-0102 | Poppyseed Paste (Jar) | 400g | 869 1808 0006 62 |
| ALK05-0103 | Poppyseed Paste (Sachet) | 500g | 869 1808 0007 61 |
| ALK05-0105 | Tahini (Glass Jar) | 300g | 869 1808 0007 92 |
| ALK05-0106 | Tahini (Plastic Bottle) | 500g | 869 1808 0008 39 |
| ALK05-0108 | Grape Molasses (Glass Jar) | 380g | 869 1808 0008 08 |
| ALK05-0109 | Grape Molasses (Plastic Bottle) | 700g | 869 1808 0008 22 |
| ALK05-0111 | Tahini (Twin) | 250-300g | 869 1808 0008 46 |







125g.

ALK01-1001
ALK01-1006
ALK01-1007

Double Roasted Coconut Covered Hazelnut Mini Delight
Double Roasted Pomegranate Flavoured Coconut Covered Pistachio Mini Delight
Rose Flavoured Caster Sugar Covered Mini Delight

869 1808 0013 24
869 1808 0014 16
869 1808 0014 78



125g.

ALK01-1002 Double Roasted Chocolate Covered Pistachio Mini Delight
ALK01-1003 Double Roasted Caster Sugar Covered Extra Pistachio Mini Delight
ALK01-1004 Sultan Double Roasted Extra Pistachio Mini Delight
ALK01-1005 Fruit Flavoured Caster Sugar Covered Mini Delight

869 1808 0013 55
869 1808 0013 86
869 1808 0014 47
869 1808 0012 94



250g.

ALK01-1101
ALK01-1106
ALK01-1107

Double Roasted Coconut Covered Hazelnut Mini Delight
Double Roasted Pomegranate Flavoured Coconut Covered Pistachio Mini Delight
Rose Flavoured Caster Sugar Covered Mini Delight

869 1808 0013 31
869 1808 0014 23
869 1808 0014 85



250g.

ALK01-1102 Double Roasted Chocolate Covered Pistachio Mini Delight
 ALK01-1103 Double Roasted Caster Sugar Covered Extra Pistachio Mini Delight
 ALK01-1104 Double Roasted Extra Pistachio Sultan Mini Delight
 ALK01-1105 Fruit Flavoured Caster Sugar Covered Mini Delight

869 1808 0013 62
 869 1808 0013 93
 869 1808 0014 54
 869 1808 0013 00



400g.

ALK01-1201
ALK01-1202
ALK01-1203

Double Roasted Coconut Covered Hazelnut Mini Delight
Double Roasted Chocolate Covered Pistachio Mini Delight
Double Roasted Caster Sugar Covered Extra Pistachio Mini Delight

869 1808 0013 48
869 1808 0013 79
869 1808 0014 09



400g

- ALK01-1204 Double Roasted Extra Pistachio Sultan Mini Delight
 ALK01-1205 Fruit Flavoured Caster Sugar Covered Mini Delight
 ALK01-1206 Double Roasted Pomegranate Flavoured Coconut Covered Pistachio Mini Delight
 ALK01-1207 Rose Flavoured Caster Sugar Covered Mini Delight

- 869 1808 0014 61
 869 1808 0013 17
 869 1808 0014 30
 869 1808 0014 92

TURKISH DELIGHTS

| | | | |
|------------|------------------------------------|------|------------------|
| ALK01-0801 | Turkish Delight with Assorted Nuts | 400g | 869 1808 2007 10 |
| ALK01-0802 | Turkish Delight with Assorted Nuts | 550g | 869 1808 0004 95 |
| ALK01-0803 | Turkish Delight with Assorted Nuts | 650g | 869 1808 0005 01 |
| ALK01-0804 | Turkish Delight with Assorted Nuts | 700g | 869 1808 2009 25 |





JÖLE ŞEKERİ

| | | | | | |
|------------|--------------|----|------------|----------------|------|
| ALK03-0401 | White Jelly | kg | ALK03-0405 | Blue Jelly | kg |
| ALK03-0402 | Yellow Jelly | kg | ALK03-0406 | Purple Jelly | kg |
| ALK03-0403 | Yeşil Jelly | kg | ALK03-0408 | Orange Jelly | kg |
| ALK03-0404 | Pink Jelly | kg | ALK03-0450 | Assorted Jelly | 600g |

| | | | |
|------------|-----------------------|------|------------------|
| ALK03-0001 | Milk Hard Candy | 300g | 869 1808 0016 21 |
| ALK03-0002 | Frosty Hard Candy | 300g | 869 1808 0016 38 |
| ALK03-0003 | Strawberry Hard Candy | 300g | 869 1808 0015 77 |
| ALK03-0004 | Watermelon Hard Candy | 300g | 869 1808 0019 28 |
| ALK03-0005 | Yellow Bonbon Candy | 300g | 869 1808 0016 45 |
| ALK03-0006 | Orange Bonbon Candy | 300g | 869 1808 0016 69 |
| ALK03-0007 | Red Bonbon Candy | 300g | 869 1808 0016 52 |
| ALK03-0008 | Green Bonbon Candy | 300g | 869 1808 0016 76 |



| | | | |
|------------|------------------------|------|------------------|
| ALK03-0009 | Fruity Hard Candy | 300g | 869 1808 0018 98 |
| ALK03-0010 | Thyme Hard Candy | 300g | 869 1808 0016 14 |
| ALK03-0011 | Istanbul Hard Candy | 300g | 869 1808 0016 83 |
| ALK03-0012 | Cinnamon Hard Candy | 300g | 869 1808 0016 07 |
| ALK03-0013 | Red Apple Hard Candy | 300g | 869 1808 0015 91 |
| ALK03-0014 | Green Apple Hard Candy | 300g | 869 1808 0015 84 |
| ALK03-0016 | Hard Candy with Nuts | 300g | 869 1808 0015 53 |
| ALK03-0017 | Hard Candy with Sesame | 300g | 869 1808 0015 39 |





| | | | |
|------------|--------------------------------|------|------------------|
| ALK03-0018 | Mint Candy | 300g | 869 1808 0015 15 |
| ALK03-0019 | Assorted Mint Candy | 300g | 869 1808 0016 90 |
| ALK03-0020 | Sugar-Coated Chickpea | 300g | 869 1808 0015 46 |
| ALK03-0021 | Assorted Sugar-Coated Chickpea | 300g | 869 1808 0017 06 |

| | | | |
|------------|--------------------------|------|------------------|
| ALK03-0022 | Bergamot Candy | 300g | 869 1808 0015 22 |
| ALK03-0023 | Bonbon Bergamot Candy | 300g | 869 1808 0019 35 |
| ALK03-0024 | Finger Bergamot Candy | 300g | 869 1808 0019 42 |
| ALK03-0025 | Assorted Finger Bergamot | 300g | 860 1808 0019 59 |
| ALK03-0026 | Cacao Finger Bergamot | 300g | 869 1808 0019 66 |
| ALK03-0027 | Loop Candy | 300g | 869 1808 0015 60 |





| | | | |
|------------|-------------------------------|------|------------------|
| ALK03-0101 | Plain Cream Candy | 450g | 869 1808 0011 19 |
| ALK03-0102 | Cacao Cream Candy | 450g | 869 1808 0019 73 |
| ALK03-0103 | Chocolate Covered Cream Candy | 400g | 869 1808 0012 49 |
| ALK03-0104 | Cream Candy with Fruit Pieces | 400g | 869 1808 0012 56 |
| ALK03-0105 | Plain Cream Candy | 950g | 869 1808 0011 26 |
| ALK03-0106 | Cacao Cream Candy | 950g | 869 1808 0019 80 |



| | | | |
|------------|-----------------------------|------|------------------|
| ALK03-0201 | Crispy Sesame Halva | 300g | 869 1808 0017 13 |
| ALK03-0202 | Crispy Sesame Halva (Boxed) | 300g | 869 1808 0010 41 |
| ALK03-0203 | Sesame Halva | 300g | 869 1808 0017 20 |
| ALK03-0204 | Sesame Halva (Boxed) | 300g | 869 1808 0001 67 |
| ALK03-0205 | Sesame-Grape Halva | 300g | 869 1808 0022 08 |

| | | | |
|------------|------------------------------------|------|------------------|
| ALK04-0906 | Assorted Chocolate Dragée | 150g | 869 1808 0012 01 |
| ALK04-0907 | Pebbles | 150g | 869 1808 0011 71 |
| ALK04-0908 | Milk-Bitter-White Chocolate Dragée | 150g | 869 1808 0015 08 |
| ALK04-0909 | Almond Dragée | 150g | 869 1808 0011 64 |
| ALK04-0910 | Pistachio Dragée | 150g | 869 1808 0011 40 |
| ALK04-0911 | Hazelnut Dragée | 150g | 869 1808 0011 33 |
| ALK04-0912 | Coffee Bean Dragée | 150g | 869 1808 0011 57 |
| ALK04-0913 | Grape Dragée | 150g | 869 1808 0011 88 |
| ALK04-0914 | Orange Dragée | 150g | 869 1808 0011 95 |



| | | | |
|------------|-----------------------------------|------|------------------|
| ALK04-0921 | Milk Chocolate Almond Dragée | 150g | 869 1808 0020 93 |
| ALK04-0922 | Milk Chocolate Pistachio Dragée | 150g | 869 1808 0021 09 |
| ALK04-0923 | Milk Chocolate Hazelnut Dragée | 150g | 869 1808 0021 16 |
| ALK04-0924 | Milk Chocolate Grape Dragée | 150g | 869 1808 0021 23 |
| ALK04-0925 | Milk Chocolate Orange Dragée | 150g | 869 1808 0021 30 |
| ALK04-0926 | Milk Chocolate Coffee Bean Dragée | 150g | 869 1808 0021 47 |



| | | | |
|------------|---------------------------|------|------------------|
| ALK04-0915 | Bitter Almond Dragée | 150g | 869 1808 0020 31 |
| ALK04-0916 | Bitter Pistachio Dragée | 150g | 869 1808 0020 48 |
| ALK04-0917 | Bitter Hazelnut Dragée | 150g | 869 1808 0020 55 |
| ALK04-0918 | Bitter Grape Dragée | 150g | 869 1808 0020 62 |
| ALK04-0919 | Bitter Orange Dragée | 150g | 869 1808 0020 79 |
| ALK04-0920 | Bitter Coffee Bean Dragée | 150g | 869 1808 0020 86 |



| | | | |
|------------|----------------------------------|------|------------------|
| ALK04-0927 | White Chocolate Almond Dragée | 150g | 869 1808 0021 54 |
| ALK04-0928 | White Chocolate Pistachio Dragée | 150g | 869 1808 0021 61 |
| ALK04-0929 | White Chocolate Hazelnut Dragée | 150g | 869 1808 0021 78 |
| ALK04-0930 | White Chocolate Grape Dragée | 150g | 869 1808 0021 85 |
| ALK04-0931 | White Chocolate Orange Dragée | 150g | 869 1808 0021 92 |

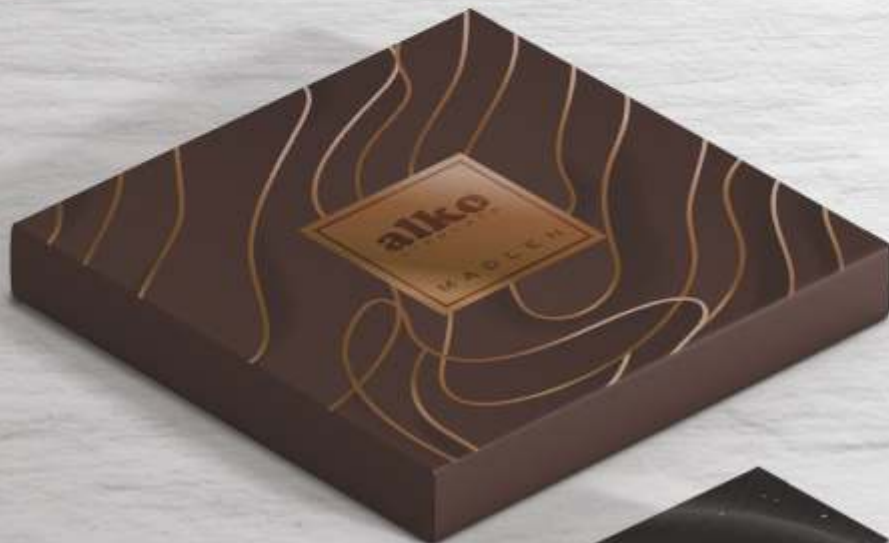


| | | | |
|------------|---------------------------------------|------|------------------|
| ALK04-0901 | Pebbles Dragée | 400g | 869 1808 0012 25 |
| ALK04-0902 | Chocolate Dragée | 400g | 869 1808 0019 97 |
| ALK04-0903 | Milk-Bitter-White Chocolate Dragée | 400g | 869 1808 0012 18 |
| ALK04-0904 | Assorted Sugar-Coated Chickpea Dragée | 400g | 869 1808 0010 34 |
| ALK04-0905 | Assorted Almond Dragée | 400g | 869 1808 0017 75 |
| ALK04-0932 | Assorted Almond Dragée | 100g | 879 1808 0020 24 |
| ALK04-0933 | Assorted Chocolate Dragée | 100g | 869 1808 0020 17 |
| ALK04-0934 | Pebbles | 100g | 869 1808 0020 00 |
| ALK04-0935 | White Chocolate Coffee Bean | 150g | |
| ALK04-1000 | Milk-Bitter Madlen | 250g | 869 1808 0010 65 |
| ALK04-1100 | Chocolate Spread | 450g | 869 1808 0006 31 |



alko[®]
CONFECTIONERY

CHOCOLATES



ALK04 Premium Spoon Chocolate

16g

869 1808 022 15



alko[®]
CONFECTIONERY

FLOSS HALVAS

| | | | |
|------------|-------------|------|------------------|
| ALK02-0001 | Floss Halva | 250g | 869 1808 1010 86 |
| ALK02-0002 | Floss Halva | 350g | 869 1808 1011 54 |
| ALK02-0003 | Floss Halva | 500g | 869 1808 1012 22 |



| | | | |
|------------|--|------|------------------|
| ALK02-0005 | Fluffy Floss Halva with Pistachio | 495g | 869 1808 0009 21 |
| ALK02-0006 | Fluffy Cacao Floss Halva | 495g | 869 1808 0019 04 |
| ALK02-0006 | Pomegranate Flavoured Fluffy Floss Halva | 500g | 869 1808 0022 39 |





FLOSS HALVAS

ALK02-0050
ALK02-0051

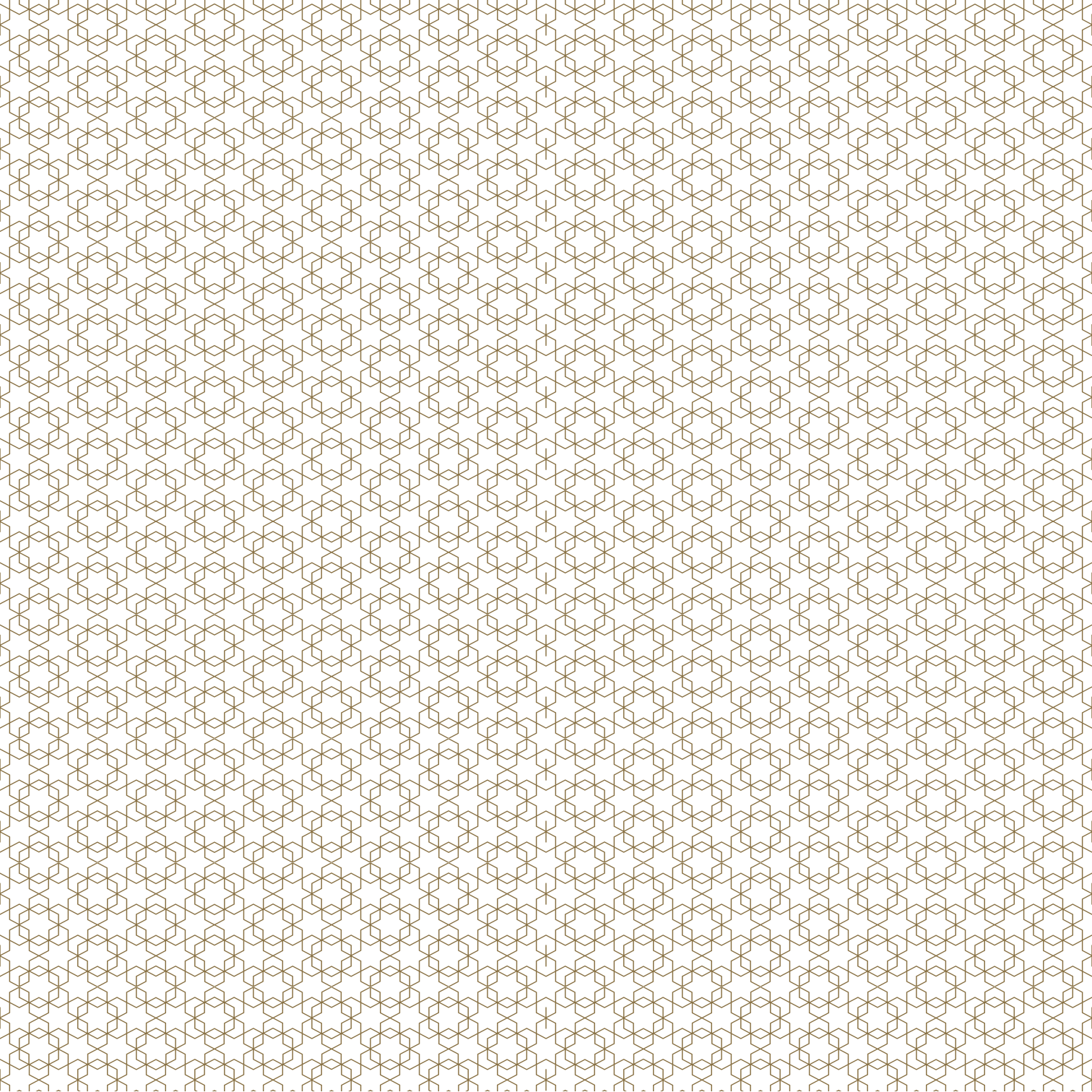
Chocolate Covered Floss Halva
Chocolate Covered Floss Halva, Large

300g 869 1808 5000 18
350g 869 1808 0019 11



| | | | |
|------------|-------------------------------|------|------------------|
| ALK02-0101 | Saray Halva | 350g | 869 1808 4006 08 |
| ALK02-0102 | Saray Halva with Pistachio | 350g | 869 1808 4007 07 |
| ALK02-0103 | Chocolate Covered Saray Halva | 350g | 869 1808 3002 67 |
| ALK02-0200 | Met Halva | 400g | 869 1808 0001 36 |
| ALK02-0201 | Chocolate Covered Met Halva | 400g | 869 1808 0001 43 |
| ALK02-0300 | Pulled Halva | 450g | 869 1808 0001 12 |





WWW.ALKOSEKERLEME.COM



KOLAYLI
GROUP