



COMPANY PROFILE

WHO ARE WE ?

Etkili Facade Systems was founded with the 30+ years of experience of its founder and honoring its international commitments in a short time it has achieved to be one of the leading companies in the sector.

Etkili Facade Systems has also gone into action in high-rise sector and has successfully completed several high-rise projects such as Fikirtepe Life Center, Park Mavera, Center Building for Pilot Training of Turkish Airlines.

Etkili Facade Systems which continuously modernizes its capacity and quality requirements in line with the world standards devotes itself to everlasting development. Our vision is to improve the value which we present to our customers, employees, society and environment thanks to our agility and organizational productivity along with the developing technology.

Our fundamental philosophy and aim is to be the best both in Turkey and in the world, serve as a model company, develop new products capable of meeting the requirements of our customers, produce more and more, put what we produce into service for our customers ensuring customer satisfaction without making no concession on quality in every field in which we are ready to serve for our customers.

OUR MAIN INTERESTS

Aluminium Curtain Wall
& Rainscreen Systems

Skylight Systems

Glass Partition Systems

Door & Window
Systems

Balustrade & Railing

Steel Structures & Sub-
structures

OUR BUSINESS PARTNERS

EJOT®

HILTI

fischer ®

 **WÜRTH**


SAINT-GOBAIN

 **ŞİŞECAM**

 **GUARDIAN**
GLASS

AGC


İZOCAM®

 **ROCKWOOL**®

KNAUF


TECHNOWOOL®

 **ETKİLİ**
FACADE SYSTEMS
ETKİLİ FACADE SYSTEMS LLC.

OUR BUSINESS PARTNERS



OUR BUSINESS PARTNERS



OUR PROJECTS



OUR PROJECTS

COMPLETED PROJECTS

- Tashkent City (Tashkent – UZBEKISTAN)
- Tashkent City Nursery (Tashkent – UZBEKISTAN)
- Fikirtepe Life Center (Istanbul – TURKEY)
- Temaşehir (Konya – TURKEY)
- Esref Bitlis Anatolian High School (Istanbul – TURKEY)
- Bahcetepe (Istanbul – TURKEY)
- Medium Station Aluminium Works (TANZANIA)

ONGOING PROJECTS

- TRC Headquarters (Dodoma – TANZANIA)
- Dodoma Train Station Platform Steel Works (Dodoma – TANZANIA)

COMPLETED PROJECTS

TASHKENT CITY NURSERY

TASHKENT - UZBEKISTAN

Quantity : 2500 m²

Our Works

- Aluminium Composite Panel
- Ceramic Panel Coating
- Decorative Brise Soleils
- Aluminium Curtain Walls
- Aluminium Joineries





TASHKENT CITY

TASHKENT - UZBEKISTAN

Quantity : 15000 m²

Our Works

- Aluminium Composite Panel
- Ceramic Panel Coating
- Aluminium Curtain Walls
- Aluminium Joineries







FIKIRTEPE LIFE CENTER

ISTANBUL - TURKEY

Quantity : 4500 m²

Our Works

- Aluminium Composite Panel
- Roof Cladding (Trapeziodal Sheet)
- Aluminium Curtain Walls
- Aluminium Joineries









TEMAŞEHİR

KONYA - TURKEY

Quantity : 37500 m²

Our Works

- Aluminium Composite Panel
- Canopies
- Expanded Mesh Aluminium Sheets
- Aluminium Joineries

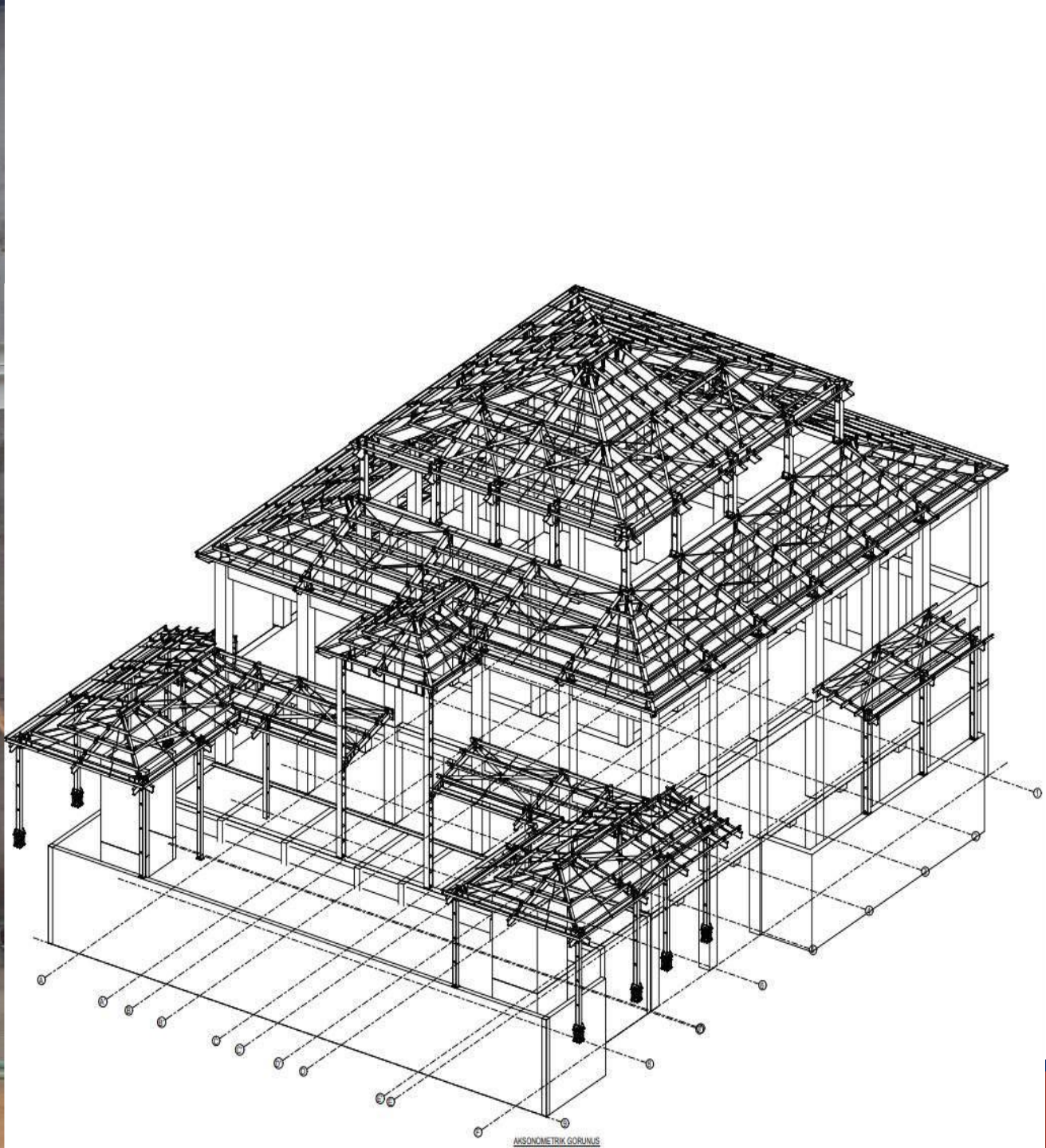


TEMAŞEHİR









ESREF BITLIS ANATOLIAN HIGH SCHOOL

ISTANBUL - TURKEY

Quantity : 5600 m²

Our Works

- Aluminium Composite Panel
- Aluminium Curtain Wall
- Compact Laminate Cladding
- Brick Cladding
- Skylights
- Aluminium Joineries









BAHCETEPE

ISTANBUL - TURKEY

Quantity : 9500 m²

Our Works

- Aluminium Composite Panel
- Aluminium Curtain Wall
- EIFS Cladding
- Aluminium Joineries





MEDIUM STATIONS ALUMINIUM WORKS

TANZANIA

Quantity : 1100 m²

Our Works

- Aluminium Composite Panel
- Aluminium Joineries
- Glass Partitions
- Canopy







ONGOING PROJECTS

TRC HEADQUARTERS

DODOMA - TANZANIA

Quantity : 5500 m²

Our Works

- Aluminium Composite Panel
- Aluminium Curtain Wall
- EIFS Cladding
- Aluminium Joineries
- Glass Partitions
- Canopy









FIRST FLOOR
01.BD.04
COMM & LONG DIST
TRAIN MAN

FIRST FLOOR

FIRST FLOOR



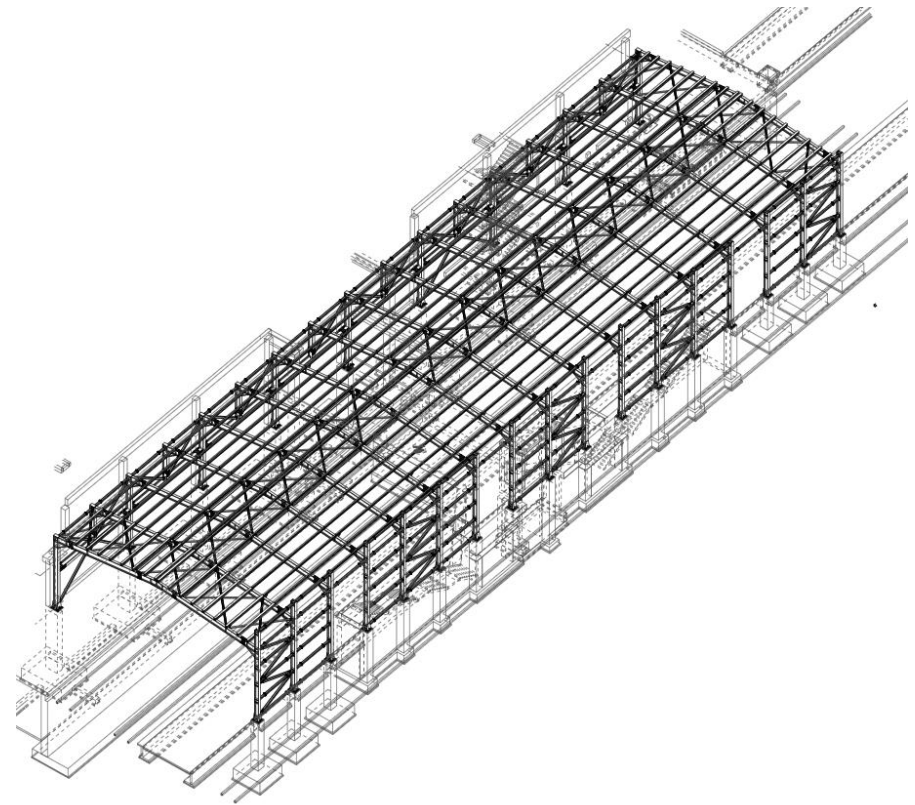
DODOMA TRAIN STATION PLATFORM STEEL WORKS

DODOMA - TANZANIA

Quantity : Approx. 250 tonnes

Our Works

- Platform Steel





OUR FACTORIES



Aluminium Factory





Steel Factory