

Flat Steel Products

HOT ROLLED COILS



THICKNESS : 1.20mm - 20.00mm

WIDTH : 1000mm - 1500mm

HOT ROLLED SHEETS



THICKNESS : 1.20mm - 10.00mm

WIDTH : 1000mm - 1500mm

LENGHT : 2000mm - 12000mm

HOT ROLLED PLATES



THICKNESS : 10mm - 200mm

WIDTH : 500mm - 2500mm

LENGHT : 1000mm - 12000mm

COLD ROLLED COILS



THICKNESS : 0.20mm - 2.00mm

WIDTH : 1000mm - 1250mm

COLD ROLLED SHEETS



THICKNESS : 0.20mm - 2.00 mm

WIDTH : 1000mm - 1500mm

LENGHT : 2000mm - 6000mm

HOT & COLD ROLLED STRIPS



THICKNESS : 1.20mm - 8.00mm

WIDTH : 32mm - 950mm

GALVANIZED COILS



THICKNESS : 0.20mm - 3.00mm

WIDTH : 1000mm - 1250mm

CHEQUERED PLATES - DIAMOND

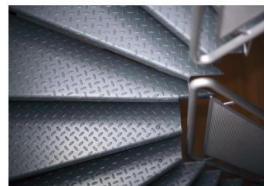


THICKNESS : 1.60mm - 12.00 mm

WIDTH : 1000mm - 1500mm

LENGHT : 2000mm - 6000mm

CHEQUERED PLATES - TEAR DROP

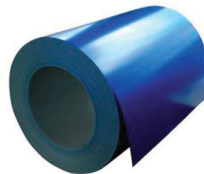


THICKNESS : 1.60mm - 12.00mm

WIDTH : 1000mm - 1500mm

LENGHT : 2000mm - 6000mm

PREPAINTED COILS

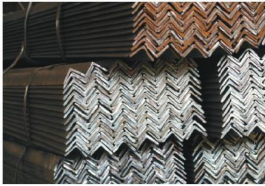


THICKNESS : 0.25mm - 1.20mm

WIDTH : 600mm - 1250mm

Long Steel Products

EQUAL ANGLES



SIZE : 20 x 20mm - 200 x 200mm

THICKNESS : 2.00 - 24.00mm

LENGHT : 6000mm - 12000mm

FLAT BARS



SIZE : 12 - 300mm

THICKNESS : 3 - 30mm

LENGHT : 6000mm - 12000mm

ROUND BARS



SIZE : diameter 8 - 80mm

LENGHT : 6000mm - 12000mm

SQUARE BARS



SIZE : 8 x 8mm - 80 x 80mm

LENGHT : 6000mm

HOLLOW SECTIONS - SQUARE



SIZE : 10 x 10mm - 200 x 200mm

THICKNESS : 0.50 - 10.00mm

LENGHT : 6000mm - 12000mm

IPN - IPE



SIZE : 80 - 600mm

LENGHT : 6000mm - 12000mm

UPN - UPE



SIZE : 40 - 300mm

LENGHT : 6000mm - 12000mm

HEA - HEB



SIZE : 100mm upto 1000mm

LENGHT : 6000mm - 12000mm

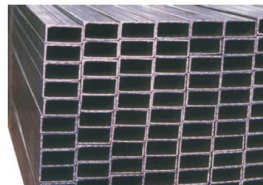
L - T - Z



SIZE : serial; 28, 38

LENGHT : 6000mm - 12000mm

HOLLOW SECTIONS - RECTANGULAR



SIZE : 10 x 20mm - 200 x 150mm

THICKNESS : 0.50 - 10.00mm

LENGHT : 6000mm - 12000mm

Long Steel Products

REINFORCING BARS



SIZE : diameter 6 - 32mm

LENGHT : 6000mm - 12000mm

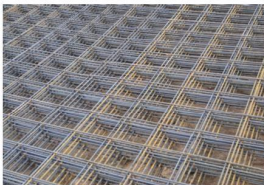
WIRE RODS



DIAMETER : 5.50mm - 16.00mm

in coils

WIRE MESH



SIZE : 100 x 100mm - 300 x 300mm

THICKNESS : 4 - 7mm

LENGHT : Specifiable upto 12.000mm

All our "flat product"s qualities are S235JR , S355JR, DC01, DC04 and have international standards such as; ASTM, BS, DIN, EURONORM, GOST, JIS, ISO, SAE etc.

All our "long product"s qualities are S235JR, S355JR and have international standards such as; AFNOR (NF), AISI, ASTM, BS, DIN, EURONORM, GOST, JIS, ISO, SAE, SI, TS, UNI, ELOT etc.