



**mono steel**  
Worldwide solution partner

# CONTENT

- 01. WORD FROM THE CEO**
- 02. COMPANY PROFILE**
- 03. SERVICES**
- 04. PRODUCTS**
- 05. REFERENCES**



## WORD FROM THE CEO

The world is evolving every day. From design to technology, production to consumption people now prefer brands that understand them, and respond to their needs and offer special solutions. With this understanding, we continue to improve day by day. As an international company, we have set out with the vision of supplying products to each of our customers in their own domestic markets. We aim to create a new vision for each of our customers, to bring our customers and colleagues together with the same vision, and to keep satisfaction at the highest level. In line with this goal, we cooperate with international companies all over the world and increase our success in each of our projects. In this way, we have accomplished flawless works without compromising our quality.

Apart from Turkey; today we are involved in many large projects in Canada, The UK, Africa, Europe and Australia. We see this as a success of not only our brand but also our employees. The priority of our brand and employees is to always keep the satisfaction of our customers at the highest level.

As one of the strong companies in its sector, we continue to produce and develop all over the world. We are also taking part in projects that will carry us further without compromising our mission. We are taking firm steps towards becoming a world brand, and we are proud of that.

*Mustafa Toprakçeken*



## COMPANY PROFILE

We are a project management & manufacturing company based in Sakarya, Turkey. We are operating on an international scale as an Engineering, Procurement, Construction, and Installation (EPCI) company. We have references throughout Europe, Africa, Australia, and The Middle East.

Our company targets go beyond Europe, Africa, Australia, and Middle East. We are open for work to all other parts of the world. We handle diverse steel projects of different volumes. Our Vision is to become the lead solution provider for all steel structure and structural parts issues worldwide. Our mission is to build a diverse team that believes in development and customer satisfaction, to inspire sustainable innovation and quality in steel-structures designs, manufacturing and installments.

The professional approach and competence of our personnel in all the processes of proj-

# Worldwide Solution Partner

ect management, design, and manufacturing ensure on-time delivery of projects. In addition, Mono Steel offers shipping and transportation consultation services to all customers at no additional cost.

Mono Steel applies zero tolerance to mistakes in every project whether big or small. We ensure quality and on-time delivery using our modern machinery and project management programmes and softwares.

We aim not only at doing business at a global scale, but also, to present ourselves as a potential partner to provide solutions to different problems that may occur in steel-constructions industry. Our motto is “worldwide solution partner.” Thus, our preference to work as a sub-contractor though having the full capability and capacity to be a main contractor.





# OUR SERVICES

**Our high  
manufacturing  
capacity enable us  
to carry out all size  
projects.**





## MANUFACTURING

In our manufacturing plant we produce several types of steel-structures according to customers specifications. We have been involved in projects from different sectors like Sports, Energy, Industrial, commercial, Tourism, Residential, Agricultural, Road and Transport sector. Our products are manufactured according to EN Standards. Our clients range from business owners with a full project, international contractors to Engineering Consultants companies.

Every project we manufacture is analysed by our technical team to ensure durability and safety. If requested by the customer shop drawings and static designs are done before production process. The steel structures manufacturing process begins with the procurement of quality raw materials. Our production team controls both the dimensions and certificates of raw materials before Factory approval. We also have a laboratory to test the tensile strength and other properties of raw materials.

The process continues with sand blasting process, welding, drilling, and Painting using both manual and modern machinery. Our painting process starts from basic types up to multi-layer coating according to ISO12944 class.

We deliver the project with installation markings to make it easy for our customers.





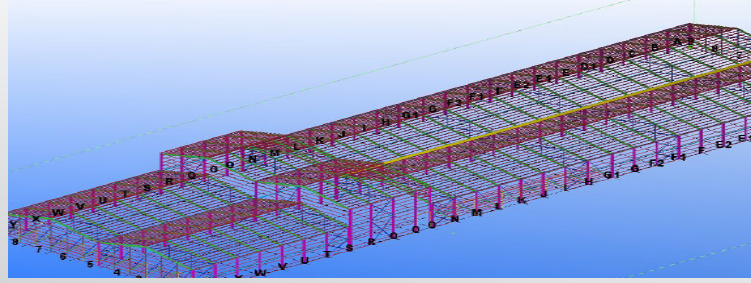
## INSTALLATION

When requested we have a team of professionals experienced in steel structures installation. To suite the customers we can also provide an installation supervisor to ensure the project is installed safely and in the right way.

Because we value sustainability, durability, and safety our installation team is well equipped with the project from the design stage to manufacturing stages. They suggest ways to make projects more sustainable and safer, taking into consideration site effects. For safety assessments, we issue risk assessment reports to our clients for approval before any installations.







## PROJECT DESIGN & ENGINEERING

We offer design and engineering services for industrial constructions, Warehouses, Bridges structures, conveyor structures, buildings, energy plants, stadiums, and other steel structural constructions. Our team which consists of highly qualified engineers takes into consideration customers' expectations and the Quality standards to be maintained in the project. Mono Steel delivers 3D models using the best software for client's project. We also do shop drawings and static designs to make sure durability and safety is upheld. We offer remodelling services and suggestions on how to maintain durability

Although we work with European standards, our team is well versed with other international standards. Using the equivalent in strength and quality they can redesign and suggest edits to projects with different standards.



# OUR PRODUCTS

All our products are  
manufactured  
according to EN  
standards



# 01. STEEL STRUCTURES

Steel-structures are produced in accordance with customer specifications. Among our steel-structures are buildings, warehouses, cabins, stairways, raised platforms, bunkers, conveyors, bridge structures, etc.





## 02. SANDWICH PANELS

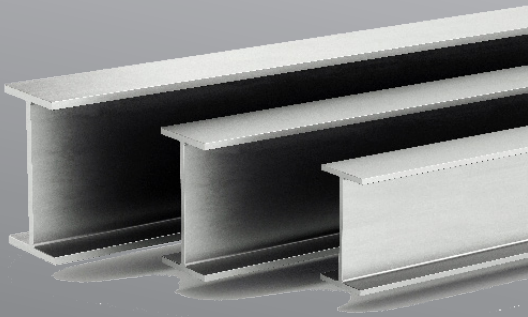
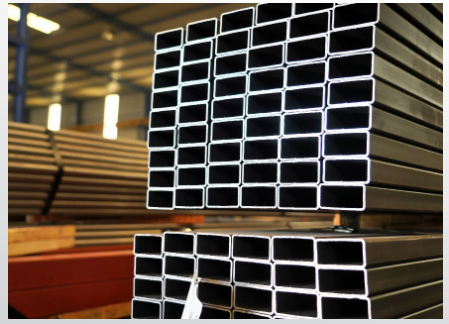


We supply insulated 3 ribs and 5 ribs Rigid polyurethane (PUR) and polyisocyanurate (PIR) sandwich panels. The high thermal properties of sandwich panels make them suitable for insulated roofs, cold rooms, roofing, wall partitioning and insulated sheds. They are also appropriate for containers, portable cabins, pre-fabricated houses, and shelters.



### 03. STEEL PROFILES

We supply steel all types of profiles according to EN standards. Among these profiles are Angle Profiles, Rectangular profiles, Square Profiles, Round pipes, HEA-HEB profiles, IPE-UNP profiles, UPE profiles Z profiles, flat profiles, honey-comb NPI-IPE profiles just to mention a few.



### 04. WIRE RODS

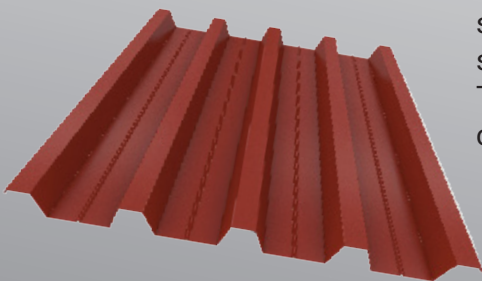
We supply both low carbon and high carbon steel wire rods. Ribbed wire rods thickness varies between 6mm to 16 mm. Plain wire rods' thickness ranges between 5.5mm to 20mm.





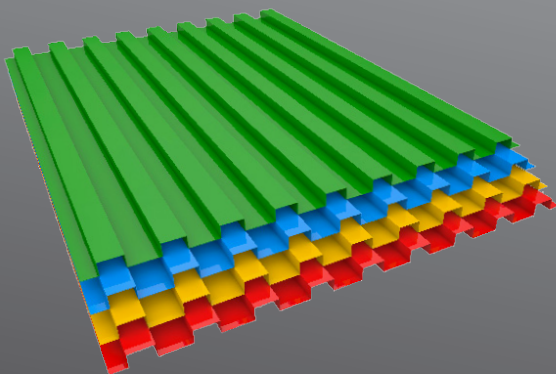
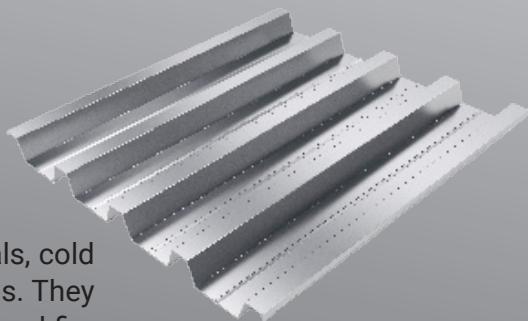
## 05. DECK SHEETS

We supply galvanized and painted, galvanized and aluminium deck sheets for roofing and flooring of building structures in different dimensions according to EN standards. The thickness of trapezoidal sheets varies between 0,3mm to 1,2mm. The length and width are customized according to the customer's specifications.



## 06. SHEET METALS

We supply galvanized sheet metals, cold rolled and hot rolled sheets metals. They come in different qualities, sizes and finishes.







## 07. REBARS

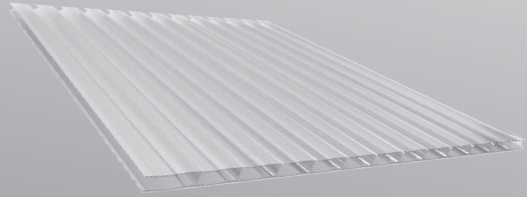
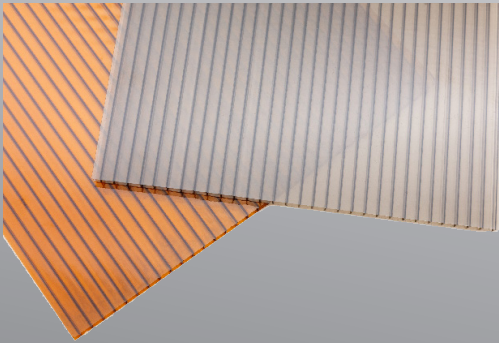
Our reinforcement steels come in B500A, B500B, and B500C qualities. The thickness of ribbed reinforcement bars ranges from 10mm to 32mm. Whilst the thickness for plain reinforcement steel ranges from 6mm to 32mm. The length of rebars is 6 or 12 metres depending on your needs.



## 08. POLYCARBONATE SHEETS

We supply polycarbonate sheets in different thicknesses for various uses. These can be used for greenhouses, skylight roofing, stadiums... We supply them cut according to the customer's project.





## 09. DOORS

We supply industrial fire-resistant doors, sectional doors, fire exit doors, and rolling up doors of different dimensions.

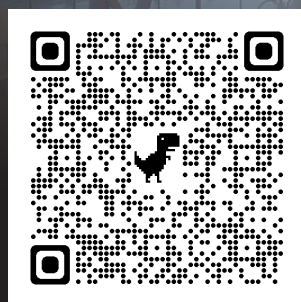




Make us your  
Solution Partner



# OUR REFERENCES



Scan for reference list



## SOME OF OUR CLIENTS



**VEGA**

**ZORLUENERJİ**

**snowyhydro**



**Ç\*TIKA**

**TOSYALI  
HOLDİNG**



**RIXOS  
HOTELS**



Where we have carried  
out projects



**Address** : 1. Ferizli Osb Mahallesi  
2. Cadde No: 4/1  
Ferizli / Sakarya

**Phone No** : +90 850 885 42 48

**WhatsApp** : +90 541 917 92 27

**Email** : [info@monosteel.com.tr](mailto:info@monosteel.com.tr)

**Website** : [www.monosteel.com.tr](http://www.monosteel.com.tr)

Scan to download

