



---

## ERM MODA – Company Profile Presentation.

March 2022

Global.  
Sustainable.  
Ethical.

# ERMODA AS STRATEGIC PARTNER



Design led Sourcing and Manufacturing to the world's leading apparel retailers and brands



## ABOUT US:

ERMODA have been established in Istanbul since 2009, we have maintained our business philosophy based on entrepreneurial spirit, the concern for innovation and, above all, the passion for the textile industry.

ERMODA freely strives to implement its core philosophy of achieving success by being of service to its clients, an asset to its employees and a partner to its vendors.

We produce to the highest quality standards as approved by Bureau Veritas, Intertek and SGS.

ERMODA strives for market leadership in the knitted garment market. With its vision, high product quality, market position and production flexibility, it is also the largest and most reliable apparel licensee of many global brands in Turkey and the Middle East.

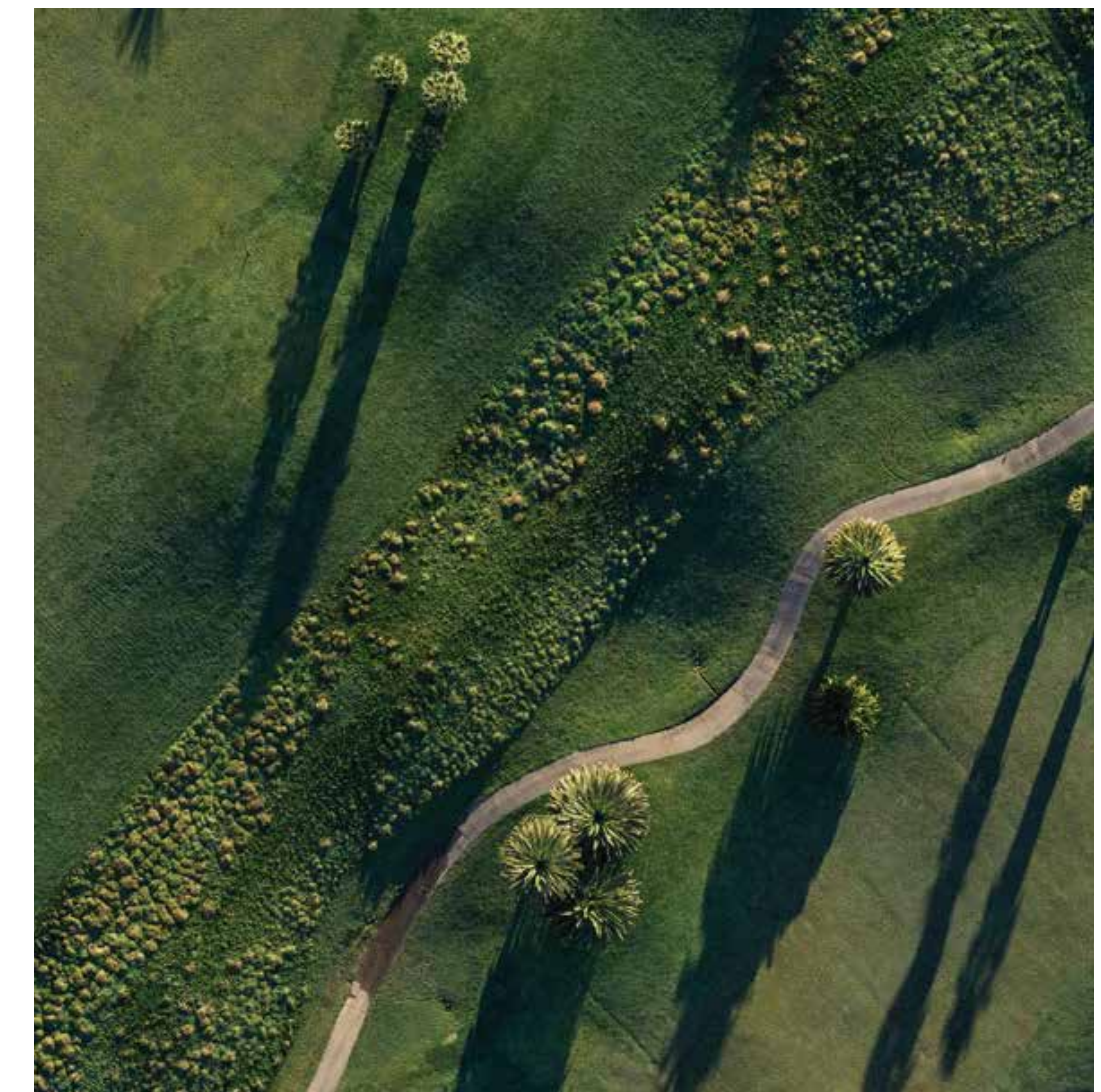
ERMODA has integrated a rich textile culture into its product line, working with numerous global customers around the world through its strong international connections, exporting to various countries, in UK, Europe, and Middle East.



# ERMODA AS STRATEGIC PARTNER



## Why Turkey is a good market for the textile industry?



- Geographical proximity to Europe.
- Qualified / Best in class workforce.
- Better environmental conditions, better social compliance
- Turkey has gained valuable experience in fabric design and has started to present its unique designs in fashion shows in prominent markets
- We hold Social Compliance Audits from Sedex (SMETA) and we are approved to produce Disney licensed product. (FAMA)

# ERMODA IN NUMBERS



## Our Production factories.



### OWN FACTORIES

HEAD OFFICE IN ISTANBUL WITH OVER 80 EMPLOYEES

OWN FACTORIES ARE IN VAN AND GIRESUN WITH OVER 500 EMPLOYEES  
MONTHLY PRODUCTION CAPACITY IS 750.000 UNITS.  
MONTHLY CUTTING CAPACITY IS 1.600.000 UNITS.



### SUB CONTRACTOR

6 CONTRACT MANUFACTURERS IN 4 DIFFERENT CITIES WITH OVER 1200 EMPLOYEES.  
4 PRINTING AND 2 EMBROIDERY FACTORIES BASED IN ISTANBUL WITH OVER 200 EMPLOYEES.  
MONTHLY PRODUCTION CAPACITY IS 750.000 UNITS.

**TOTAL MONTHLY CAPACITY IS 1.500.000 UNITS**

# ERMODA AS STRATEGIC PARTNER



## PRODUCT DESIGN



### DESIGN TEAM:

Both our Turkey Factory Design Studio and our International Design Studio office offer the latest trends to the high street through catwalk analysis, trend forecasting & design development.

We stay ahead of the latest trends through attending major international trade shows and fashion resources as WGSN, Shutterstock etc.

Travelling all over the world for inspirational shopping including Korea, New York, LA & Europe.

Our print team produce all of our artworks in house, creating beautiful designs through hand painting, illustration & Photoshop.

We produce trend-led in house designs as well as custom prints tailored to the customer.

Our design categories include all type of jersey garments including women, kids, including baby and teens and mens, loungewear pyjamas and nightdresses also including light woven pieces across categories.

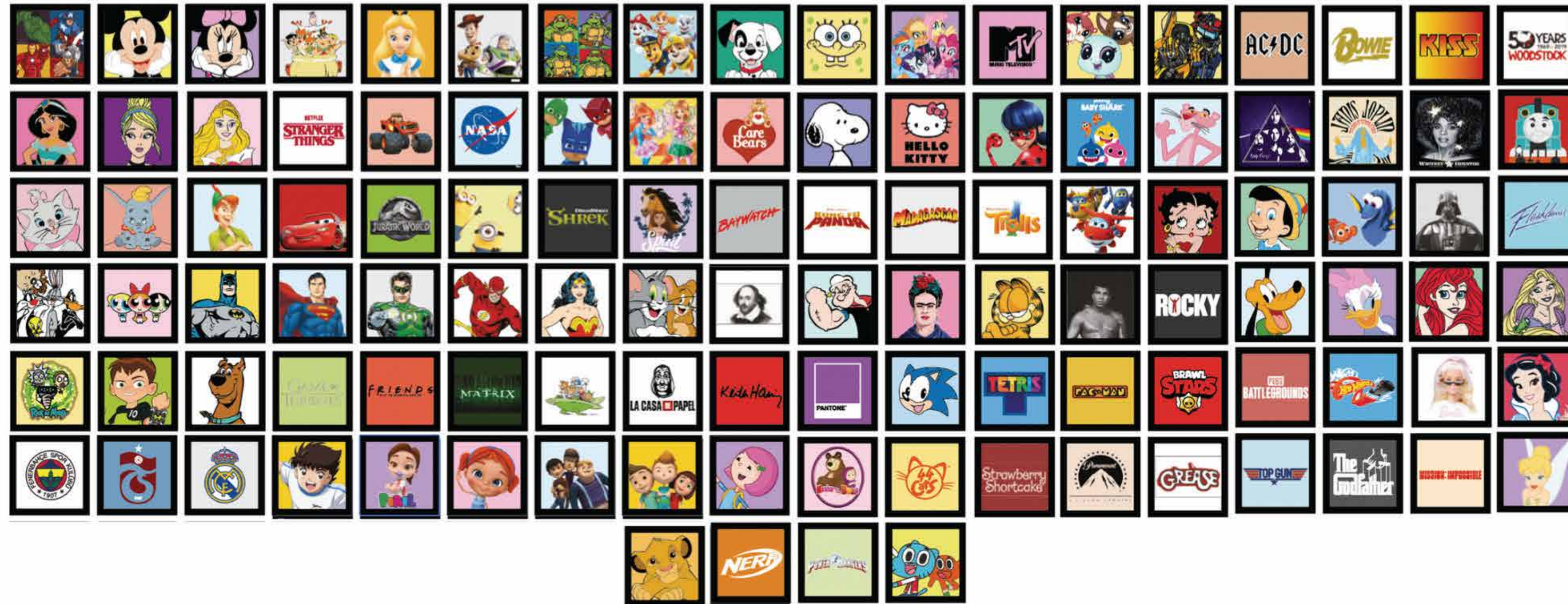
Offering a bespoke design service and inspirational trend led fashion product.

# ERMODA AS STRATEGIC PARTNER



## LICENSED PRODUCT DESIGN

ERMODA strives for market leadership in the knitted garment market. With its vision, high product quality, market position and production flexibility, it is also the largest and most reliable apparel licensee of many global brands in Turkey and the Middle East.



# ERMODA AS STRATEGIC PARTNER



## REASONS FOR SUSTAINABLE GROWTH

### Supplier Consolidation

Retailers are more looking at Strategic relationships with reliable and consistent suppliers to meet constant evolving demands

### Design Excellence

10 designers based out of customer location and developing over 300 new styles every month backed by reliable sourcing



### Sustainability

Promoting usage of Sustainable Material in line with Industry Best Practices and investing in Sharing Economy

### Global Footprint

Right Product, And Right Factory - Design, Sourcing and Manufacturing

### Financial Stability

Large working capital limits and debt free company

### Strong Ethics & Compliance

Social, Technical and Ethical Compliance standards across our active factories

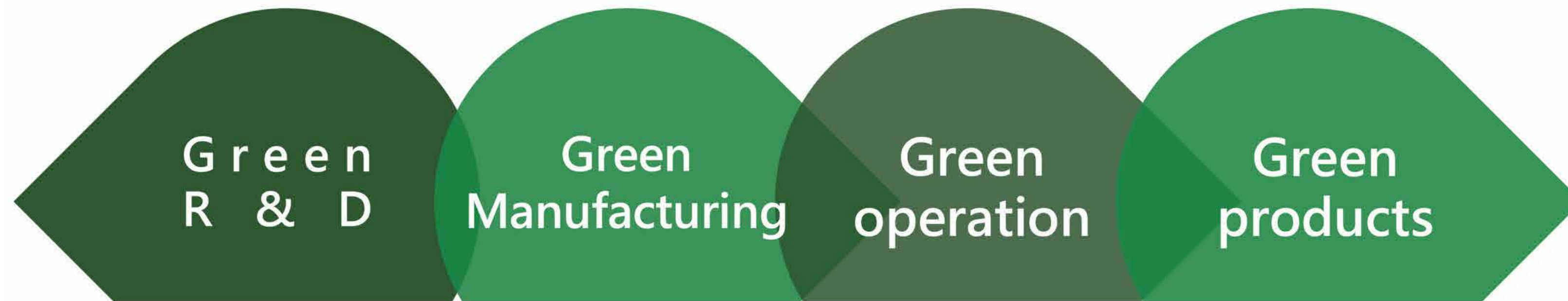
## Global, Collaborative, Ethical

# ERMODA AS STRATEGIC PARTNER



## Sustainability Awareness:

With our infinite respect for all species and the nature, we aim to leave a beautiful world to the next generations, forming our production line and our manufacturing methods in a nature conscious manner.



Transparent, technically and ethically audited supply base

Regional sourcing

Promoting usage of Sustainable Material in line with Industry Best Practices and investing in Sharing Economy

Global Footprint, Right Product, And Right Factory - Design, Sourcing and Manufacturing





# SUSTAINABLE AND ETHICAL TRADE



Regularly updated audit certificates from:



Our Sustainability 2022 Strategy covers all areas of ethical trading. Including labour standards, sourcing of raw materials, reducing our carbon footprint/ water waste & implementing Circular Design principles.

We are committed to responsible sourcing; our factories are held to the highest standards through risk assessment and ethical auditing to tackle modern day slavery & human trafficking.

We are replacing conventional materials with more sustainable fabrics such as organic cotton (We are BCI member) and recycled polyester- working with our factories to ensure transparency & commercial prices.



# CONTACT US

ERMODA



## CONTACT US



Altayçeşme Mah. Efe Boz Sok. No:25  
İç Kapı No:1 Maltepe/İSTANBUL



[info@ermoda.com.tr](mailto:info@ermoda.com.tr)

[www.ermoda.com.tr](http://www.ermoda.com.tr)



+90 216 429 29 73