



**PRODUCT GUIDE '24**

Discover

all Your

Needs...





X

E

U

Z

—

**THERMAL INSULATION 5**

Polibond	7
Poliplast	8
Polidecor	9
Polidecor Line	10
Poliastar	11

**PAINT AND PRIMERS 12**

Silicolour Silicon Matt	14
Silicolour Acrylic Matt	15
Silicolour Grained	16
Polivita	17
Polimatt	18
Polinice	19
White-Up	20
Policontact Plus	21
Poliprimer	22
Siliast 100	23
Color Chart	24

**WATER INSULATION 29**

Polistal	31
FW 2K Semi-Elastic	32
FW 2K Full-Elastic	33
MS - 09	34
Polikit	35
Politight	36
Poliwhite	37

**CONSTRUCTION CHEMICALS 38**

Tilebond	40
Tilebond Flex	41
Fuga	42
Fuga Flex	43
TH - 100	44
Poliank	45
GY - 100	46
YHT - 100	47

**REPAIR AND STRENGTHENING 48**

Poliex A	50
Poliex	51
Poliex 1	52
Poliex 5	53
ZR 100 S	54

**ACCESS PANELS 56**

Standart Access Panel	58
Honeycomb Access Panel	59
Multiple Opening Access Panel	60
Acoustic Access Panel	61
Corded Access Panel	62
Carabiner Access Panel	63
Wall Type Panel	64
Economic Panel	65
Economic Corded Access Panel	66
Zero Construction Access Panel	67
External Frame Access Panel	68
Metal Access Panel	69
Louvered Vent Panel	70
Linear Vent Panel	71
Louvered and Movable Vent Panel	72
Vectorial Vent Panel	73

**ACCESSORIES 74**

Brackets	76
Connectors	77
Clips	78
Channel Hanger - 1	79
Channel Hanger - 2	80
Channel Hanger - 3	81
Double Spring Tongues	82
Hanger Sticks	83
Clip-in Wire Clip	84
Wall Support Plate	85
Side Press Wedge	86
Steel Dowel	87
Dowel - Screw	88
Fittings	89
Joint Tape	90

**FUGA PROFILES 91**

Fuga Profile - 1	93
Fuga Profile - 2	94
Fuga Profile - 3	95
Fuga Profile - 4	96
Fuga Profile - 5	97
Fuga Profile - 6	98
Fuga Profile - 7	99
Fuga Profile - 8	100





# THERMAL INSULATION



Discover

The Quality

# POLIBOND

## -System Adhesive Mortar-



Chemical structure	Cement Based with Polymer Additive
Water absorbency	$\leq 0,5 \text{ kg/m}^2(0,5)$
Water vapor permeability coefficient	$M \leq 15$
Thermal conductivity	$1200 \pm 100 \text{ gr/m}^3$
Bending strength	min. $2 \text{ N/mm}^2$
Pressure strength	min. $6 \text{ N/mm}^2$
Thermal ins. panel bond. strength	$\geq 0,08 \text{ N/mm}^2$
Porous unit volume mass of the adhesive	$\geq 1000 \text{ kg/m}^3$
Average consumption	$4 \text{ kg}-5 \text{ kg/m}^2$

### PRODUCT DESCRIPTION:

It is an adhesive mortar for cement-based polymer-reinforced, water and moisture resistant EPS, XPS and STONE WOOL used for adhesion of thermal insulation sheets.

### AREAS OF USAGE:

- Wall and ceiling insulation,
- Indoor and outdoor thermal insulation,
- In horizontal and vertical use,
- Used for fixing thermal insulation panels on fair faced finish concrete, gas concrete, bims, brick and all cement based plaster surfaces.

### PRODUCT FEATURES:

- High bonding strength.
- Non-flammable.
- Resistant to severe weather conditions and humidity.
- Easy to apply.

### PREPARING SURFACE BEFORE APPLICATION:

• Surface of the application area should be free from mold, dust, sludge, paint, etc. which prevent adhesion. Surfaces should be repaired with STRATA repair mortar (TH100) and should be allowed to rest for at least three days before adhesion, if there are cracked and perforated surfaces such as cement, plaster or concrete pavement. STRATA POLICONTACT (Fair faced finish Concrete Primer) should be used on fair faced finish before bonding process. Before applying on highly absorbent products such as gas concrete, gypsum plaster and gypsum panel; the surface should be undercoated with STRATA POLIPRIMER.

### APPLICATION:

- POLIBOND panel bonding mortar, available in powder form in 25 kg craft paper bags, should be mixed with 5.5 - 6.5 lt water and mixed using a low-speed mixer until all aggregate is dispersed. After letting the mixture to rest for five minutes, it should be mixed for another two minutes to achieve homogeneity.
- POLIBOND bonding mortar will be applied on the edges of the thermal insulation panel in even lines if there is a gauge and scale imbalance on the application surface, and in 3 spots on the mid section using a trowel and commenced to wall application step if it is in the center.
- If the application surface is level and even, then chiseling on the backpanel will be the most suitable method.
- Enough pressure on the panel should be applied to ensure bonding and gauge and spirit level should be used to flush the panel with respect to other panels.
- The prepared mixture should be used within 2.5-3 hours and expired mortar should not be used.
- Considering varying weather conditions, proceed to pin application at the end of enough curing. Recommended duration is 24 hours.

- The most important factor that should be considered in application and setting period is the weather conditions.
- Application at temperatures under  $5^{\circ}\text{C}$  or above  $+35^{\circ}\text{C}$  should be avoided.
- Should not be used adding powder and water to frozen material.
- Precautions should be taken against direct sunlight, strong winds, high temperatures and weather conditions such as rain and frost and if required, application should not be performed.

### PACKAGING AND CONSUMPTION:

- 25kg. kraft bag.
- Consumption rate varies according to application technique and application intensity between  $4\text{kg}$  to  $5\text{kg/m}^2$ .
- Pot life is 3 hours and crusting time is 15 minutes.
- Indicated rates are theoretical and may vary according to type of application and usage intensity.

### STORAGE:

- Stack up to 10 layers in original packaging.
- Required precautions should be taken against water, humidity, frost and severe weather conditions.
- It must be stored on pallets and in dry place between  $+10^{\circ}\text{C}$  to  $+25^{\circ}\text{C}$ .
- Punctured, opened or burst packages must be closed or used immediately.
- Storage life is 12 months in case the specified storage conditions are observed.

### WARNINGS AND PRECAUTIONS:

- Insulation panels should be placed very close to each other in order not to affect the heat loss.
- Gaps should be kept at minimum.
- Do not use in moving and non-resistive areas.
- Do not contact with skin, eyes and mouth and apply when necessary safety precautions are taken.
- Our company STRATA (Zirve Yapı Kimyasalları) will not be held responsible for the mistakes in case the application is performed without observing instructions indicated above, required precautions and warnings.

# POLIPLAST

## -Sheating Plaster-



Chemical structure	Cement-based polymer, fiber-added
Application Temperature	+10 °C - +30 °C
Porous unit volume mass of the fresh mortar	≥ 1150 kg/m <sup>3</sup>
Porous unit volume mass of hardened cement based plaster	1200±100 gr/m <sup>3</sup>
Bending strength	min. 2 N/mm <sup>2</sup>
Pressure strength	min. 6 N/mm <sup>2</sup>
Thermal insulation panel adhesive strength	≥ 0,08 N/mm <sup>2</sup>
Water absorbency	≤ 0,5 kg/m <sup>2</sup> .dk(0,5)
Color features	Gray
Through drying time	(+23 °C) 24-48 hours
Average consumption	4 kg-5 kg/m <sup>2</sup>
Water vapor permeability coefficient	μ≤15

### PRODUCT DESCRIPTION:

It is a system plaster in the form of plaster used for net plaster on cement based polypropylene fiber-added high performance thermal insulation sheets (EPS, XPS, STONE WOOL).

### AREAS OF USAGE:

- On interior and exterior surfaces of buildings,
- At applications made on gas concrete, brick, gross concrete and briquette,
- In netted applications of insulation systems,
- In horizontal and vertical use,
- Applied in the last coat plaster finishes and old plaster repairs.
- Externally; for the repair of worn-out plasters, it can be used as a final coat plaster with polishing method also due to its water repellent characteristic and thickness.

### PRODUCT FEATURES:

- Preparation of a safe and clean surface prior to decorative plaster application and for all types of applicable covering material,
- Flexible due to polymer additives,
- Prevents surface cracks thanks to polypropylene fiber.
- Non-flammable,
- Long lasting,
- Resistant to severe weather conditions and humidity,
- Easy to apply.

### PREPARING SURFACE BEFORE APPLICATION:

It should be ensured that the heat insulation plates on the application surface will be level and firmly fixed. There should be no gaps between plates. Damaged surfaces should be repaired with STRATA Repair Mortar (TH100).

### APPLICATION:

- 25kg powder version of POLIPLAST system plaster should be added to 5.5-6.5 liters of water at a medium temperature and then mixed using a low-speed mixer until no lumps remain inside. After letting the mixture to rest for 5 minutes, it should be mixed for another 2 minutes to achieve homogeneity.
- First coat plastering on the prepared surface should be made in 2-3 mm thickness using notched trowel.
- System net will be embedded from top to bottom while the plaster is wet. The net is overlapped by 10 cm with each other at the connection points.
- Average setting period is between 3-5 hours, second coat of plaster should be applied using steel trowel hiding the net texture, at the end of this period.
- Prepared mixture should be used within 2 hours, do not use the expired mortar.
- Do not use by adding powder and water to solid material.

- The most important factor that should be considered during application and setting period is the weather. Precautions should be taken against direct sunlight, strong winds, high temperatures and weather conditions such as rain and frost. Application should not be performed, if needed.

### PACKAGING AND CONSUMPTION:

- 25kg. kraft bag.
- Consumption rate varies according to application technique and application intensity between 4kg to 5kg / m<sup>2</sup>.
- Pot life is 3 hours and crusting time is 15 minutes.
- Indicated rates are theoretical and may vary according to type of application and usage intensity.

### STORAGE:

- Stack up to 10 layers in original packaging.
- Required precautions should be taken against water, humidity, frost and severe weather conditions.
- It must be stored on pallets and in dry place between 5°C to 35°C.
- Punctured, opened or burst packages must be closed or used immediately.
- Storage life is 6 months in case the specified storage conditions are observed.

### WARNINGS AND PRECAUTIONS:

- Adverse weather conditions such as strong wind, direct sunlight and frost should be observed on the applied surfaces and the application should be directly exposed to those factors.
- To start another application on the plastered surface, the plaster should be completely dry. Average duration is between 3 to 5 days depending on weather conditions.
- Do not use in moving and non-resistive areas.
- Do not contact with skin, eyes and mouth and apply when necessary safety precautions are taken.
- Our company STRATA (Zirve Yapı Kimyasalları) will not be held responsible for the mistakes in case the application is performed without observing instructions indicated above, required precautions and warnings.



# POLIDEKOR

## -Mineral Decorative Plaster Coating-



Chemical structure	White Cement-based with polymer additive
Dry film thickness	E5
Grain size	S3
Water vapor transfer rate	V2
Water transfer rate	W1
Crack covering capability	A0
Color features	White
Fire resistance	A1
Average consumption	2,5 kg-4 kg/m <sup>2</sup>

### PRODUCT DESCRIPTION:

It is a white cement based, polymer additive mineralized textured waterproofing top coat decorative facade coating with special filler dimensions that offers an aesthetic appearance and applied as final coat before paint.

### AREAS OF USAGE:

- Indoor and outdoor facades,
- For top coat plaster of insulation systems,
- In horizontal and vertical use,

### PRODUCT FEATURES:

- Resistant to severe weather conditions, breathes and stabilizes humidity rate.
- Adherence strength is high, high efficiency on all kinds of cement based surfaces.
- Water repellent due to silicon additive and dolomite stone existing in its structure, water resistant.
- Does not crack or flake due to its fiber texture.
- Non-flammable.
- Resistant to severe weather conditions and humidity.
- Elastic, easily applicable.
- Forms an aesthetic appearance due to its mineral texture at varying dimensions (1mm, 1.5mm and 2.5mm).
- Dolomite stones provide a white appearance, no discoloration.
- Adds a natural and aesthetic look to the structure, paintable.

### PREPARING SURFACE BEFORE APPLICATION:

Surface of the application area should be free from mold, dust, sludge, paint, etc. which prevent adhesion. Before applying on highly absorbent products such as aerated concrete, rough plaster, gypsum plaster, gypsum panel and jacketing plaster; STRATA Poliastar 100 should be applied on the surface with a roller as an undercoat. On glossy surfaces, it is recommended to form a texture and adherence bridge with STRATA Policontact (Fair Faced Concrete Primer).

### APPLICATION:

- 25kg powder version of POLIDEKOR Mineral Coating Plaster should be added to 6-7 liters of water and then mixed using a low-speed mixer until no lumps remain inside. After letting the mixture to rest for 2-3 minutes, it should be mixed for another 2 minutes to achieve homogeneity.
- Fresh mortar should be used within 30 to 60 minutes.
- Mineral covering mortar should be applied on a prepared surface using a steel trowel.
- After dispersing the material onto the surface and before thorough drying, approx. the wet mortar should be polished using a plastic trowel to create texture within about 10 minutes.
- The texture can be applied in horizontal, vertical or circular direction, as desired.
- Application should be made between (+)5°C and (+)30°C.
- Should be applied on wide and single surfaces in a single turn, in other instances should be applied in sections.

- Premature drying should be prevented in adverse weather conditions.
- Do not apply on wet or frozen surface.
- Optionally, it can be painted with solvent-free STRATA exterior paint after drying.
- The most important factor that should be consider during application and setting period is the weather. Precautions should be taken against direct sunlight, strong winds, high temperatures and weather conditions such as rain and frost. Application should not be performed, if needed.

### PACKAGING AND CONSUMPTION:

- 25kg. kraft bag.
- Consumption rate varies according to application technique and application intensity between 2.5kg to 4kg / m<sup>2</sup>.
- Indicated rates are theoretical and may vary according to type of application and usage intensity.

### STORAGE:

- Stack up to 10 layers in original packaging.
- Required precautions should be taken against water, humidity, frost and severe weather conditions.
- It must be stored on pallets and in dry place between +10°C to +25°C.
- Punctured, opened or burst packages must be closed or used immediately.
- Storage life is 12 months in case the specified storage conditions are observed.

### WARNINGS AND PRECAUTIONS:

- Adverse weather conditions such as strong wind, direct sunlight and frost should be observed on the applied surfaces and the application should be directly exposed to those factors.
- To start another application on the surface, the plaster should be completely dry. Average duration is between 3 to 5 days depending on weather conditions.
- Do not use in moving and non-resistive areas.
- Do not contact with skin, eyes and mouth and apply when necessary safety precautions are taken.
- Our company STRATA (Zirve Yapı Kimyasalları) will not be held responsible for the mistakes in case the application is performed without observing instructions indicated above, required precautions and warnings.

# POLIDEKOR LINE

## -Line Pattern Decorative Plaster Coating-



Chemical structure	White Cement-based with polymer additive
Dry film thickness	E5
Grain size	S4
Water vapor transfer rate	V2
Water transfer rate	W1
Crack covering capability	A0
Color features	White
Fire resistance	A1
Average consumption	2,5 kg-4 kg/m <sup>2</sup>

### PRODUCT DESCRIPTION:

It is a white cement based, polymer-added, mineralized textured, waterproofing top coat decorative facade coating offering an aesthetic appearance thanks to its special filler dimensions and it is applied as final coat before paint.

### AREAS OF USAGE:

- Indoor and outdoor facades,
- For top coat plaster of insulation systems,
- In horizontal and vertical use,

### PRODUCT FEATURES:

- Resistant to severe weather conditions, breathes and stabilizes humidity rate.
- Adherence strength is high, high efficiency on all kinds of cement based surfaces.
- Water repellent due to silicon additive and dolomite stone in its structure.
- Does not crack or flake due to its fiber texture.
- Non-flammable.
- Resistant to severe weather conditions and humidity.
- Dolomite stones provide a white appearance, no discoloration.
- Elastic, easily applicable.
- Adds a natural and aesthetic look to the structure, paintable.

### PREPARING SURFACE BEFORE APPLICATION:

Surface of the application area should be free from mold, dust, sludge, paint, etc. which prevent adhesion. Before applying on highly absorbent products such as aerated concrete, rough plaster, gypsum plaster, gypsum panel and sheathing plaster; STRATA Poliarstar 100 should be applied on the surface with a roller as an undercoat. On glossy surfaces, it is recommended to form a texture and adherence bridge with STRATA Policontact (Fair Faced Concrete Primer).

### APPLICATION:

- 25kg powder version of POLIDEKOR CIZGI mineral coating plaster should be added to 6-7 liters of water and then mixed using a low-speed mixer until no lumps remain inside. After letting the mixture to rest for 2-3 minutes, it should be mixed for another 2 minutes to achieve homogeneity.
- Fresh mortar should be used within 30 to 60 minutes.
- Should be applied on a prepared surface using a steel trowel based on the biggest grain within the mortar.
- After dispersing the material onto the surface and before thorough drying, approx. the wet mortar should be polished using a plastic trowel to create texture within about 10 minutes.
- The texture can be applied in horizontal, vertical or circular direction, as desired.
- Application should be made between (+)5°C and (+)30°C.
- Should be applied on wide and single surfaces in a single turn, in other instances should be applied in sections.
- Premature drying should be prevented in adverse weather conditions.

- Do not apply on wet or frozen surfaces.
- Optionally, it can be painted with solvent-free STRATA exterior paint after drying.
- The most important factor that should be consider during application and setting period is the weather. Precautions should be taken against direct sunlight, strong winds, high temperatures and weather conditions such as rain and frost. Application should not be performed, if needed.

### PACKAGING AND CONSUMPTION:

- 25kg. kraft bag.
- Depending on application technique and application intensity, consumption rate varies between 2.5kg to 4kg / m<sup>2</sup>.
- Indicated rates are theoretical and may vary according to type of application and usage intensity.

### STORAGE:

- Stack up to 10 layers in original packaging.
- Required precautions should be taken against water, humidity, frost and severe weather conditions.
- It must be stored on pallets and in a dry place between +10°C and +25°C.
- Punctured, opened or burst packages must be closed or used immediately.
- Storage life is 12 months in case the specified storage conditions are observed.

### WARNINGS AND PRECAUTIONS:

- Adverse weather conditions such as strong wind, direct sunlight and frost should be observed on the applied surfaces and the application should be directly exposed to those factors.
- To start another application on the surface, the plaster should be completely dry. Average duration is between 3 to 5 days depending on the weather conditions.
- Do not use in moving and non-resistive areas.
- Do not contact with skin, eyes and mouth and apply when necessary safety precautions are taken.
- Our company STRATA (Zirve Yapı Kimyasalları) will not be held responsible for the mistakes in case the application is performed without observing instructions indicated above, required precautions and warnings.



# POLIASTAR 100

## -Decorative Plaster Primer-



Chemical structure	Acrylic based primer
Application Temperature	+10 °C - +30 °C
Re-coating time	3 hours
Application tools	Brush-Roller
Color features	White
Through drying time	(+23 °C) 45-60 minutes
Average consumption	0,100 kg - 0,150 kg/m <sup>2</sup>
Density	1,6 kg/lt
ph	8-9

### PRODUCT DESCRIPTION:

It is a white, acrylic based polymer added decorative plaster primer for absorbent surfaces.

### AREAS OF USAGE:

- Indoor and outdoor facades,
- Before the decorative plastering of the insulation systems,
- In horizontal and vertical use,
- On surfaces with high absorption.

### PRODUCT FEATURES:

- Free of filler materials, high penetrability on surfaces.
- Increases preservation capability of the surface.
- Decreases surface absorbency, provides savings in Decorative plaster application.
- Resistant to severe weather conditions, air permeable and stabilizes humidity rate.
- Adherence strength is high, high efficiency on all kinds of cement based surfaces.
- Non-flammable.
- Resistant to severe weather conditions and humidity.
- Easy to apply by roller.

### PREPARING SURFACE BEFORE APPLICATION:

The application surface should be free of mold, dust, sludge, paint, etc. which prevent adhesion. Existing cracks and pits should be remedied with STRATA REPAIR MORTAR (TH100).

### APPLICATION:

- Poliprimer 100 should be thinned with 15% water and mixed using a low-speed mixer. Mixing should be repeated at certain intervals during application.
- Applied using a roller.
- Drying time is between 45-60 minutes depending on the ambient instant temperature and weather conditions.

### PACKAGING AND CONSUMPTION:

- Presented in 15kg and 25kg plastic pails.
- Rate of consumption is between 0,100- 0,150 kg/m<sup>2</sup> depending on the application technique and application intensity.
- Crusting time is 15 minutes and application can be performed on it after 3 hours.
- Indicated rates are theoretical and may vary according to place of application and usage intensity.

### STORAGE:

- In its original package, 15kg pails should be stacked up to 4 levels and 25kg pails in 3 levels max.
- Must be kept indoors.
- Required precautions should be taken against water, humidity, frost and severe weather conditions.
- It must be stored on pallets and in dry place between +10°C to +25°C.
- Punctured, opened or burst pails must be closed or used immediately.
- Storage life is 12 months in case the specified storage conditions are observed.

### WARNINGS AND PRECAUTIONS:

- Does not bear a flammable and poisonous element, there is no obligation of marking.
- Do not contact with skin, eyes and mouth and apply when necessary safety precautions are taken.
- Our company STRATA (Zirve Yapı Kimyasalları) will not be held responsible for the mistakes in case the application is performed without observing instructions indicated above, required precautions and warnings.



# PAINTS AND PRIMERS



Discover

The Colorful

Life



# SILICOLOUR SILICON MATT

## -Matt Exterior Surface Paint with Silicon-



Largest Particle Size(S)	Class S1 Thin
Gloss(G)	G3 Matte
Dry Film Thickness	E2
Mold Formation(K)	K2 General Purpose

### PRODUCT DESCRIPTION:

Water-based, silicone-added, air permeable and highly covering matt top coat exterior paint.

### AREAS OF USAGE:

- Used as topcoat in all exterior applications.
- Over the plaster, on top of exposed concrete
- Old painted, discolored surfaces

### PRODUCT FEATURES:

- Water repellent due to its silicon structure.
- Integrates with the surface due to its high strength.
- Resistant to UV rays, does not discolor.
- Resistant to severe weather conditions.
- Spreads easily on the surface thanks to the silicon additive.
- Perfect covering ability.
- Easy to apply by roller and spray.
- Does not spall or flake if applied correctly.

### PREPARING SURFACE BEFORE APPLICATION:

- Application surfaces must be clean, dry, dust free and in a self-supporting position.
- Clean and applicable surfaces should be pasted preferably with SILICASTE and a drying time (24 hrs) must be allowed.
- In the priming process, primer should be applied before applying grained SILIAST100 paint with high adherence and surface must be prepared.

### APPLICATION:

- SILICOLOUR SILICON is applied to the facade in two layers with brush, roller or single layer spraying.
- Before commencing the SILICOLOUR application, the correct water additive ratio should be adjusted and the correct consistency should be attained.
- 10% water thinning ratio of the exterior surface paint is the tested and recommended value.
- Two coats are recommended for the finish, and the waiting time between coats is 12 hours.
- Touch dry time is 1 to 2 hours.
- Thorough drying time is 24 hours.
- During application, instant temperature should be between + 5°C and + 30°C.

### PACKAGING AND CONSUMPTION:

- Offered in various packaging formats, SILICOLOUR SILICON: has 2.5lt/7.5lt/12.5lt/15lt pails options.
- Rate of consumption is between 100 to 160 ml/m<sup>2</sup> depending on the application technique and surface absorbency.
- A controlled sample is recommended for exact consumption.
- Indicated rates are theoretical and may vary according to type of application and usage intensity.

### STORAGE:

- Stack up to 3 layers in original packaging.
- Must be kept indoors.
- Required precautions should be taken against water, humidity, frost and severe weather conditions.
- Must be stored on pallets and in a dry place between +10°C to +25 °C.
- Punctured, opened or burst pails must be closed or used immediately.
- Storage life is 24 months in case the specified storage conditions are observed.

### WARNINGS AND PRECAUTIONS:

- Recommended thinning should be performed and followed.
- Attention should be paid to the fact that there is no difference in toning longer and continuous applications.
- On surfaces with salt efflorescence or risk of efflorescence; prior to primer application:
  - It is recommended to apply a 1-part surface impregnated material and 1-part water mixture to the surface with a brush after cleaning the surface with a damp brush.
  - Do not contact with skin, eyes and mouth and apply when necessary safety precautions are taken.
  - Avoid application at temperatures below +5°C or above +35°C, do not attempt to use frozen material by adding powder or water.
- Our company **STRATA (Zirve Yapı Kimyasalları)** will not be held responsible for the mistakes in case the application is performed without observing instructions indicated above, required precautions and warnings.



# SILICOLOUR ACRYLIC MATT

-Water-Based Acrylic Based Exterior Paint-



Largest Particle Size(S)	Class S1 Thin
Gloss(G)	G3 Matte
Dry Film Thickness	E2
Mold Formation(K)	K2 General Purpose

## PRODUCT DESCRIPTION:

Water-based, acrylic-based, breathable and highly covering matt top coat exterior paint.

## AREAS OF USAGE:

- Used as topcoat in all exterior applications.
- Over the plaster, on top of exposed concrete
- Old painted, discolored surfaces

## PRODUCT FEATURES:

- Water repellent due to its silicon structure.
- Integrates with the surface due to its high strength.
- Resistant to UV rays, does not discolor.
- Resistant to severe weather conditions.
- Spreads easily on the surface thanks to the silicon additive.
- Perfect covering ability.
- Easy to apply by roller and spray.
- Does not spall or flake if applied correctly.

## PREPARING SURFACE BEFORE APPLICATION:

- Application surfaces must be clean, dry, dust free and in a self-supporting position.
- Clean and applicable surfaces should be pasted preferably with SILICASTE and a drying time (24 hrs) must be allowed.
- In the PRIMING process, primer should be applied before applying grained SILIAST100 paint with high adherence and surface must be prepared.

## APPLICATION:

- SILICOLOUR ACRYLIC is applied to the facade in two layers with brush, roller or single layer spraying.
- Before commencing the SILICOLOUR ACRYLIC application, the correct water additive ratio should be adjusted and the correct consistency should be attained.
- 10% water thinning ratio of the exterior surface paint is the tested and recommended value.
- Two coats are recommended for the finish, and the waiting time between coats is 12 hours.
- Touch dry time is 1 to 2 hours.
- Thorough drying time is 24 hours.
- During application, instant temperature should be between + 5°C and + 30°C.

## PACKAGING AND CONSUMPTION:

- Offered in various packaging formats, SILICOLOUR SILICON: has 2.5lt/7.5lt/12.5lt/15lt pails options.
- Rate of consumption is between 100 to 160 ml/m<sup>2</sup> depending on the application technique and surface absorbency.
- A controlled sample is recommended for exact consumption.

- Indicated rates are theoretical and may vary according to type of application and usage intensity.

## STORAGE:

- Stack up to 3 layers in original packaging.
- Must be kept indoors.
- Required precautions should be taken against water, humidity, frost and severe weather conditions.
- Must be stored on pallets and in a dry place between +10°C to +25 °C.
- Punctured, opened or burst pails must be closed or used immediately.
- Storage life is 24 months in case the specified storage conditions are observed.

## WARNINGS AND PRECAUTIONS:

- Recommended thinning should be performed and followed.
- Attention should be paid to the fact that there is no difference in toning longer and continuous applications.
- On surfaces with salt efflorescence or risk of efflorescence; prior to primer application:
  - It is recommended to apply a 1-part surface impregnated material and 1-part water mixture to the surface with a brush after cleaning the surface with a damp brush.
  - Do not contact with skin, eyes and mouth and apply when necessary safety precautions are taken.
  - Avoid application at temperatures below +5°C or above +35°C, do not attempt to use frozen material by adding powder or water.
  - Our company **STRATA (Zirve Yapı Kimyasalları)** will not be held responsible for the mistakes in case the application is performed without observing instructions indicated above, required precautions and warnings.

# SILICOLOUR GRAINED

## -Grained Facade Paint-



Particle Size(S)	S3
Gloss(G)	G3 (Matte)
Dry Film Thickness	E4
Water Vapor Transfer Rate	V0
Water Transfer Rate	W0

### PRODUCT DESCRIPTION:

Silicone emulsion based, exterior top finish applied with a roller and textured with roller.

### AREAS OF USAGE:

- Used as topcoat in all exterior applications.
- Over the plaster, on top of exposed concrete
- Old painted, discolored surfaces

### PRODUCT FEATURES:

- Can be textured.
- Penetrates quickly to the surface due to its spreading feature.
- Integrates with the surface due to its high strength.
- Resistant to UV rays, no discoloration.
- Resistant to severe weather conditions.
- Spreads easily on the surface thanks to the silicon additive.
- Prevents possible micro-cracks on the surface.
- Perfect covering ability.
- Easy to apply by roller and spray.
- Does not spall or flake if applied correctly.

### PREPARING SURFACE BEFORE APPLICATION:

- Application surfaces must be clean, dry, dust free and in a self-supporting position.
- A setting period must be allowed on newly plastered surfaces. (28 days)
- Clean and applicable surfaces should be pasted preferably with SILICASTE and a drying time (24 hrs) must be allowed.
- In the priming process, primer should be applied before applying grained SILIAST 100 paint with high adherence and surface must be prepared.

### APPLICATION:

- In case of direct application to very absorbent surfaces such as gas concrete, the surface should be moistured or primed with transparent primers (except in winter).
- In SILICOLOR GRAINED application, first, standard long-haired facade rollers are applied as one or two layers.
- Before the last layer dries, the surface which is painted with roller is textured (Roller is not immersed in the paint again).
- Working with two people in this two-stage painting technique will speed up and facilitate painting.
- First person applies the paint with the facade roller and second person applies the pattern from the top down with the coral roller immediately before the paint dries.
- In direct roller application, the vacuum effect of the roller makes it difficult for paint to adhere to the wall and reduces the area of the paint, so long-haired facade paint is applied first and then the texture is given.
- Standard conditions must be met to hold the standard texture and to prevent sudden water loss of the material.

- SILICOLOR GRAINED is applied to the facade in two layers with brush, roller or single layer spraying.
- SILICOLOR GRAINED should not be thinned with water in application.
- Two coats are recommended for the finish, and the waiting time between coats is 12 hours.
- Full drying time is 1 to 2 hours.
- Through drying time is 24 hours.
- During application, ambient instant temperature should be between +5°C and +30°C.

### PACKAGING AND CONSUMPTION:

- SILICOLOR GRAIN in 25-kg pails;
- Rate of consumption is 1kg/m<sup>2</sup> depending on the application technique and surface absorbency.
- A controlled sample is recommended for the exact consumption.
- Indicated rates are theoretical and may vary according to type of application and usage intensity.

### STORAGE:

- Stack up to 3 layers in original packaging.
- Must be kept indoors.
- Required precautions should be taken against water, humidity, frost and severe weather conditions.
- Must be stored on pallets and in a dry place between +10°C to +25°C.
- Pails with holes, or opened or burst packages must be closed or used immediately.
- Storage life is 24 months in case the specified storage conditions are observed.

### WARNINGS AND PRECAUTIONS:

- Surfaces must be protected from rain and frost 12 hours before and after application.
- Applications should not be carried out in situations where there is wind.
- In cases where application must be performed above 25°C, care should be taken to not to apply between 11.00 to 15.00.
- Attention should be paid to the fact that there is no difference in tonality in longer and continuous applications.
- On surfaces with salt efflorescence or risk of efflorescence; prior to primer application:
- It is recommended to apply a 1-part surface impregnated material and 1-part water mixture to the surface with a brush after cleaning the surface with a damp brush.
- Do not contact with skin, eyes and mouth and apply when necessary safety precautions are taken.
- Avoid application at temperatures below +10°C and above +30°C, do not attempt to use frozen material by adding powder or water.
- Our company STRATA (Zirve Yapı Kimyasalları) will not be held responsible for the mistakes in case the application is performed without observing instructions indicated above, required precautions and warnings.



# POLIVITA

## -Silicon Odorless Washable Silk Matt-



Wet Rubbing Resistance	Class 1
Covering Strength	Class 3
Largest Particle Size	Class S1 Thin
Gloss(G)	G2 Semi Matte
Mold Formation	K2 General Purpose

### PRODUCT DESCRIPTION:

Water-based, acrylic copolymer-based, silicon-added, silk matte decorative final coat interior surface paint.

### AREAS OF USAGE:

- Used on all interiors as the final coat.
- In horizontal and vertical use,
- Can be applied on gypsum, gypsum board, betopan, osb and paintable wall paper after priming.
- Old painted, discolored surfaces

### PRODUCT FEATURES:

- Washable because of its soft matt texture.
- Air permeable.
- Water-based, odorless.
- Integrates with the surface due to its high strength.
- Spreads easily on the surface thanks to silicon additive.
- Perfect covering ability.
- Easy to apply by roller and spray.
- Does not spall or flake if applied correctly.

### PREPARING SURFACE BEFORE APPLICATION:

- Application surfaces must be clean, dry, dust free and in a self-supporting position.
- Faulty surfaces should be repaired and a smooth surface should be attained.
- On surfaces with old paint, a sanding should performed if the paint is water-based or solvent-based and the surface should be undercoated after it is free of paint.
- On new interiors or old sanded interiors, Poliprimer Transparent Primer, should be applied in single coat in 1/7 concentration.
- Should not be directly applied on surfaces with high absorbency such as gypsum, and a prior undercoating should be performed.

### APPLICATION:

- POLIVITA is applied in two coats using brush, roller or in single coat using spraying.
- Before commencing the POLIVITA interior surface painting, correct water additive ratio should be adjusted and correct consistency should be attained.
- The interior surface paint should be thinned with 15-20% water.
- Two coats are recommended for the finish, and the waiting time between coats is 5 to 8 hours.
- Touch dry time is 30 to 60 minutes.
- Thorough drying time is 24 hours.
- During application, instant temperature should be between + 5°C and + 30°C.

### PACKAGING AND CONSUMPTION:

- Offered in various packaging formats, Polibello washable paint;
- Has 2.5lt/7.5lt/12.5lt/15lt pail options.
- Rate of consumption is between 55 to 80ml/m<sup>2</sup> depending on the application technique and surface absorbency.
- A controlled sample is recommended for exact consumption.
- Indicated rates are theoretical and may vary according to type of application and usage intensity.

### STORAGE:

- Stack up to 4 layers in original packaging.
- Must be kept indoors.
- Required precautions should be taken against water, humidity, frost and severe weather conditions.
- Must be stored on pallets and in a dry place between +10 °C to +25 °C.
- Punctured, opened or burst pails must be closed or used immediately.
- Storage life is 24 months in case the specified storage conditions are observed.

### WARNINGS AND PRECAUTIONS:

- Recommended thinning should be performed and followed.
- Attention should be paid to the fact that there is no difference in toning longer and continuous applications.
- Do not contact with skin, eyes and mouth and take necessary safety precautions during application.
- Avoid application at temperatures below +5°C or above +35°C, do not attempt to use frozen material by adding powder or water.
- Our company **STRATA (Zirve Yapı Kimyasalları)** will not be held responsible for the mistakes in case the application is performed without observing instructions indicated above, required precautions and warnings.

# POLIMATT

-Silicon Odorless Washable Matt-



Wet Rubbing Resistance	Class 2
Covering Strength	Class 3
Largest Particle Size	Class S1 Thin
Gloss(G)	G1 Matte
Mold Formation	K2 General Purpose

## PRODUCT DESCRIPTION:

Water-based, silicon-additive, emulsion-based, acrylic copolymer decorative matt interior surface final coat paint.

## AREAS OF USAGE:

- Used on all interiors as the final coat.
- In horizontal and vertical use,
- Can be applied on gypsum, gypsum board, betopan, osb and paintable wall paper after proper priming.
- Old painted, discolored surfaces

## PRODUCT FEATURES:

- Washable due to its soft matt texture
- Breathable.
- Water-based, odorless.
- Integrates with the surface due to its high strength.
- Spreads easily on the surface thanks to silicon additive.
- Perfect covering ability.
- Easy to apply by roller and spray.
- Does not spall or flake if applied correctly.

## PREPARING SURFACE BEFORE APPLICATION:

- Application surfaces must be clean, dry, dust free and in a self-supporting position.
- Faulty surfaces should be repaired and a smooth surface should be attained.
- On surfaces with old paint, a sanding should performed if the paint is water- or solvent-based and the surface should be undercoated after it is free of paint.
- On new interiors or old sanding interiors, Poliprimer Transparent Primer, should be applied in single coat in 1/7 concentration.
- Should not be directly applied on surfaces with high absorbency such as gypsum, and a prior undercoating should be performed.

## APPLICATION:

- POLIMATT is applied in two coats using brush, roller or in single coat using spraying.
- Before commencing the POLIMATT interior surface painting, correct water additive ratio should be adjusted and correct consistency should be attained.
- The interior surface paint should be thinned with 15-20% water.
- Two coats are recommended for the finish, and the waiting time between coats is 5 - 8 hours.
- Touch dry duration is 30-60 minutes.
- Through drying time is 24 hours.
- During application, ambient temperature should be between + 5°C and + 30°C.

## PACKAGING AND CONSUMPTION:

- Offered in various packaging formats, POLIMATT washable paint;
- has 2.5lt/7.5lt/12.5lt/15lt pail options.
- Rate of consumption is between 55- 80ml/m<sup>2</sup> depending on the application technique and surface absorbency.
- A controlled sample is recommended for exact consumption.
- Indicated rates are theoretical and may vary according to type of application and usage intensity.

## STORAGE:

- Stack up to 4 layers in original packaging.
- Must be kept indoors.
- Required precautions should be taken against water, humidity, frost and severe weather conditions.
- Must be stored on pallets and in a dry place between +10°C to +25 °C.
- Punctured, opened or burst pails must be closed or used immediately.
- Storage life is 24 months in case the specified storage conditions are observed.

## WARNINGS AND PRECAUTIONS:

- Recommended thinning should be performed and followed.
- Attention should be paid to the thinning ratio to provide that there is no difference in toning in longer and continuous applications.
- Do not contact with skin, eyes and mouth and take necessary safety precautions during application.
- Avoid application at temperatures below +5°C or above +35°C, do not attempt to use frozen material by adding powder or water.
- Our company STRATA (Zirve Yapı Kimyasalları) will not be held responsible for the mistakes in case the application is performed without observing instructions indicated above, required precautions and warnings.

# POLINICE

## -Plastic Matt Interior Surface Paint-



Wet Rubbing Resistance	Class 3
Covering Strength	Class 2
Largest Particle Size	Class S1 Thin
Gloss(G)	G3 Matte
Mold Formation	K2 General Purpose

### PRODUCT DESCRIPTION:

Acrylic copolymer emulsion-based, decorative interior surface plastic paint with matt appearance.

### AREAS OF USAGE:

- Used on all interiors as the final coat.
- In horizontal and vertical use. It can be applied on gypsum, gypsum board, paste, betopan, osb after proper priming.
- Old painted, discolored surfaces

### PRODUCT FEATURES:

- Breathable.
- Water based, odorless.
- Integrates with the surface due to its high strength.
- Perfect covering ability.
- Easy to apply by roller and spray.
- Does not spall or flake if applied correctly.

### PREPARING SURFACE BEFORE APPLICATION:

- Application surfaces must be clean, dry, dust free and in a self-supporting position.
- Faulty surfaces should be repaired and a smooth surface should be attained.
- On surfaces with old paint, a sandpapering should be performed if the paint is water-based or solvent-based and the surface should be undercoated after it is free of paint.
- On new interiors or old sandpapered interiors, Poliprimer Transparent Primer, should be applied in single coat in 1/7 concentration.
- Should not be directly applied on surfaces with high absorbency such as gypsum, and a prior undercoating should be performed.

### APPLICATION:

- POLINICE is applied in two coats using brush, roller or in single coat using spraying.
- Before commencing the POLINICE interior surface painting, correct water additive ratio should be adjusted and correct thickness should be attained.
- The interior surface paint should be thinned with 15-20% water.
- Two coats are recommended for the finish, and the waiting time between coats is 5 to 8 hours.
- Touch dry time is 30 to 60 minutes.
- Thorough drying time is 24 hours.
- During application, ambient temperature should be between + 5°C and + 30°C.

### PACKAGING AND CONSUMPTION:

- Offered in various packaging formats, POLINICE washable paint; has 2.5lt/7.5lt/12.5lt/15lt pail options.
- Rate of consumption is between 55- 80ml/m<sup>2</sup> depending on the application technique and surface absorbency.
- A controlled sample is recommended for exact consumption.
- Indicated rates are theoretical and may vary according to type of application and usage intensity.

### STORAGE:

- Stack up to 4 layers in original packaging.
- Must be kept indoors.
- Required precautions should be taken against water, humidity, frost and severe weather conditions.
- Must be stored on pallets and in a dry place between +10°C to +25 °C.
- Punctured, opened or burst pails must be closed or used immediately.
- Storage life is 24 months in case the specified storage conditions are observed.

### WARNINGS AND PRECAUTIONS:

- Recommended thinning should be performed and followed.
- Attention should be paid to the fact that there is no difference in toning longer and continuous applications.
- Do not contact with skin, eyes and mouth and take necessary safety precautions during application.
- Avoid application at temperatures below +5°C or above +35°C, do not attempt to use frozen material by adding powder or water.
- Our company STRATA (Zirve Yapı Kimyasalları) will not be held responsible for the mistakes in case the application is performed without observing instructions indicated above, required precautions and warnings.



# WHITE-UP

## -Acrylic Based White Ceiling Paint-



Wet Rubbing Resistance	Class 2
Covering Strength	Class 1
Largest Particle Size	Class S1 Thin
Gloss(G)	G1 Matte
Mold Formation	K2 General Purpose

### PRODUCT DESCRIPTION:

WHITE-UP Acrylic copolymer emulsion based, decorative interior white ceiling paint with matt appearance.

### AREAS OF USAGE:

- Used on all interiors as the final coat.
- In horizontal use,
- It can be applied on gypsum, gypsum board, paste, betopan, osb and paintable wall paper after proper priming.
- Old painted, discolored surfaces

### PRODUCT FEATURES:

- Air permeable.
- Water based, odorless.
- Integrates with the surface thanks to its high strength.
- Perfect covering ability.
- Easy to apply by roller and spray.
- Does not spall or flake if applied correctly.

### PREPARING SURFACE BEFORE APPLICATION:

- Application surfaces must be clean, dry, dust free and in a self-supporting position.
- Faulty surfaces should be remedied and a smooth surface should be attained.
- On surfaces with old paint, a sandpapering should performed if the paint is water-based or solvent-based and the surface should be undercoated after it is free of paint.
- On new interiors or old sandpapered interiors, Poliprimer Transparent Primer, should be applied in single coat in 1/7 concentration.
- Should not be directly applied on surfaces with high absorbency such as gypsum, and a prior undercoating should be performed.

### APPLICATION:

- WHITE-UP-, is applied in two coats using brush, roller or in single coat using spraying.
- Before commencing the WHITE-UP- ceiling painting, the correct water additive ratio should be adjusted and the correct thickness should be attained.
- Ceiling paint water thinning ratio, approx. 40% for first coat, 25% for last coat.
- Two coats are recommended for the finish, and the waiting time between coats is 5 to 8 hours.
- Touch dry time is 30-60 minutes.
- Thorough drying time is 24 hours.
- During application, instant temperature should be between + 5°C and + 30°C.

### PACKAGING AND CONSUMPTION:

- Offered in various packing formats, WHITE-UP ceiling paint has 3.5 kg/10 kg/17.5 kg/20kg pail options.
- Rate of consumption is between 0.110- 0.150 kg/m<sup>2</sup> depending on the application technique and surface absorbency.
- A controlled sample is recommended for exact consumption.
- Indicated rates are theoretical and may vary according to type of application and usage intensity.

### STORAGE:

- Stack up to 3 layers in original packaging.
- Must be kept indoors.
- Required precautions should be taken against water, humidity, frost and severe weather conditions.
- Must be stored on pallets and in a dry place between +10 °C to +25 °C.
- Punctured, opened or burst pails must be closed or used immediately.
- Storage life is 24 months in case the specified storage conditions are observed.

### WARNINGS AND PRECAUTIONS:

- Recommended thinning should be performed and followed.
- Attention should be paid to the fact that there is no difference in tonality in longer and continuous applications.
- Do not contact with skin, eyes and mouth and take necessary safety precautions during application.
- Avoid application at temperatures below +5°C and above +35°C, do not attempt to use frozen material by adding powder or water.
- Our company **STRATA (Zirve Yapı Kimyasalları)** will not be held responsible for the mistakes in case the application is performed without observing instructions indicated above, required precautions and warnings.

# POLICONTACT PLUS

-Fair Faced Finish Concrete Primer-



## PRODUCT DESCRIPTION:

Polymer modified resin based interior and exterior surface primer that will be used to increase surface adherence before gypsum and cement based mortar applications on fair faced finish concrete.

## AREAS OF USAGE:

- Fair faced finish concrete surfaces prior to applying gypsum and cement based mortar.
- On fair faced finish concrete,
- On walls,
- On columns,
- On ceilings and similar surfaces to increase adherence.

## PRODUCT FEATURES:

- It has high adherence.
- It has perfect adherence strength, even on older coatings.
- Flexible, does not crack.
- It is easy to apply with airless spray or roller.
- Resistant to water and chemical materials.
- It penetrates very well on the surfaces.
- It does not aggregate.
- It is in liquid form ready for use.

## PREPARING SURFACE BEFORE APPLICATION:

- Layers such as oil, grease, dirt, paint, cement grout, rust, mold oil, or salt efflorescence which may reduce adherence must be completely removed before application.
- Surfaces must be clean, stable, free from carriers and free particles
- Cracks and fractures that may be found on the surface should be prepared by repairing them carefully with STRATA Repair Mortar (TH100).
- Application of primer should be started after the surface is readied.

## APPLICATION:

- Ready to use, apply after thinning by 50-60%.
- The material should be applied after mixing thoroughly.
- Gloves should always be used during application.
- It is applied with a spray, brush or roller.
- It should not be applied in rainy weather or in temperatures below +5°C.

## PACKAGING AND CONSUMPTION:

- POLICONTACT PLUS is offered in 12 kg and 15 kg plastic pails in ready-to-use liquid form.
- Available in green and brick red, contact your representative for different colors.
- Rate of consumption varies according to the application technique and surface absorbency.
- A controlled sample is recommended for the exact consumption.
- Indicated rates are theoretical and may vary according to type of application and usage intensity.

## STORAGE:

- Stack up to 4 layers in original packaging.
- Must be kept indoors.
- Required precautions should be taken against water, humidity, frost and severe weather conditions.
- It must be stored on pallets and in dry place between +10°C to +25°C.
- Punctured, opened and exposed pails must be closed or used immediately.
- Storage life is 12 months in case the specified storage conditions are observed.

## WARNINGS AND PRECAUTIONS:

- The newly applied material should not be exposed to rain or frost for 24 hours.
- It should not be applied in temperatures below 5°C, and rainy or foggy weathers.
- Do not apply on wet or frozen surface.
- Pay attention to safety signs and warnings on the pail.
- Ensure adequate ventilation in workshops, avoid open flames and high temperatures.
- Mix thoroughly before application and do not leave the pail open.
- Do not apply in rainy weather or when rain is expected.
- Do not contact with skin, eyes and mouth and apply when necessary safety precautions are taken.
- Avoid application at temperatures below +5°C and above +30°C, do not attempt to use frozen material by adding powder or water.
- Our company STRATA (Zirve Yapı Kimyasalları) will not be held responsible for the mistakes in case the application is performed without observing instructions indicated above, required precautions and warnings.



Density	1 kg/m <sup>3</sup>
Color	Transparent
PH	6-9
Solid Substance Ratio	%27
Adherence strength through rending	≥ 1N/mm <sup>2</sup>
Drying time	60-120 minutes

### PRODUCT DESCRIPTION:

Highly advanced acrylic based primer that is highly penetrating on exterior and interior concrete, gypsum and lime surfaces.

### AREAS OF USAGE:

- On exteriors and interiors, vertical surfaces and ceilings
- Low quality absorbent surfaces that lost their lime, plaster, paint feature,
- On highly absorbent or dusty surfaces,
- On surfaces with high absorption.

### PRODUCT FEATURES:

- Becomes transparent when dry prevents absorbency of gypsum surfaces and integrates paint with the surface.
- Penetrates quickly to the surface due to its spreading property.
- Provides high savings in paint consumption.
- Ensures vividness and color of the paint that will be applied after on.
- Integrates with the surface due to its high strength.
- Resistant to severe weather conditions.
- Prevents possible micro-cracks on the surface.
- Easy to apply.
- Prevents rapid water loss on concrete and gypsum based mortars.
- Does not spall or flake if applied correctly.
- Prevents water and humidity permeability.

### PREPARING SURFACE BEFORE APPLICATION:

POLIPRIMER 1/7 transparent primer applicable surfaces should be stable, clean, dry and free of free and loose materials, free of frost, foreign materials and other contaminants. On gypsum and similar surfaces, following sandpapering, dust should be removed and then primer application should start.

### APPLICATION:

- Thinned with water in 1/7 ratio.
- POLIPRIMER 1/7 transparent primer is applied with roller, brush or spray in single coat.
- To ensure deep penetration, it is recommended to apply saturating the surface with the material.
- To ensure homogeneity of the primer, it should be mixed at certain intervals during application.
- Paint application can start at least 5 hours following the application of POLIPRIMER 1/7 transparent primer.
- During application, surface and instant temperature should be between +5°C and +30°C.

### PACKAGING AND CONSUMPTION:

- In 15kg pail, in white color, becomes transparent when dry.
- Rate of consumption is 0.08-0.100kg/m<sup>2</sup> depending on the application technique and surface absorbency.
- A controlled sample is recommended for exact consumption.
- Indicated rates are theoretical and may vary according to type of application and usage intensity.

### STORAGE:

- Stack up to 3 layers in original packaging.
- Must be kept indoors.
- Required precautions should be taken against water, humidity, frost and severe weather conditions.
- Must be stored on pallets and in a dry place between +10°C to +25°C.
- Punctured, opened or burst pails must be closed or used immediately.
- Storage life is 12 months in case the specified storage conditions are observed.

### WARNINGS AND PRECAUTIONS:

- Recommended thinning should be performed and followed.
- Do not contact with skin, eyes and mouth and take necessary safety precautions during application.
- Avoid application at temperatures below +5°C and above +35°C, do not attempt to use frozen material by adding dust or water.
- Our company STRATA (Zirve Yapı Kimyasalları) will not be held responsible for the mistakes in case the application is performed without observing instructions indicated above, required precautions and warnings.



# SILIAST 100

-Silicon Based Interior and Exterior Pre-Paint Primer-



Density	~1,60 gr/dm <sup>3</sup>
Color	White
Viscosity	Thick
Drying Duration	6-12 mins.(at 20°C)

## PRODUCT DESCRIPTION:

Silicon, emulsion based, pigmented interior and exterior paint primer with high adherence strength.

## AREAS OF USAGE:

- As final coat before painting on exteriors
- In horizontal and vertical use
- On mineral based, highly absorbent surfaces
- Prior to first paint applications
- For repainting old painted dusty surfaces
- On very absorbent or dusty surfaces.

## PRODUCT FEATURES:

- Enables expelling the humidity within the building thanks to its air permeability.
- Penetrates quickly to the surface thanks to its spreading property.
- Enables adherence and balances the bond between the structure and the paint.
- Provides high savings in paint consumption.
- Ensures vividness and preserves the color of the paint that will be applied after on.
- Integrates with the surface due to its high strength.
- Resistant to severe weather conditions.
- Prevents possible micro-cracks on the surface.
- Easy to apply.
- Prevents rapid water loss on mineral based surfaces.
- Does not spall or flake if applied correctly.
- Prevents water and humidity permeability.

## PREPARING SURFACE BEFORE APPLICATION:

SILIAST 100 applicable surfaces should be stable, clean, dry and free of free and loose materials, free of frost, foreign materials and other contaminants.

## APPLICATION:

- Thinned with water in 10% ratio.
- SILIAST 100 is applied with roller, brush or spray in single coat.
- To ensure deep penetration, it is recommended to apply saturating the surface with the material.
- To ensure homogeneity of the primer it should be mixed at certain intervals during application.
- Paint application can start at least 6 hours following the application of primer.
- During application, surface and instant temperature should be between +5°C and +30°C.

## PACKAGING AND CONSUMPTION:


- Offered in various packaging formats, SILIAST 100 is presented in 2.5lt, 10lt and 15lt pails. Packaging color is white and becomes transparent when it dries.
- Rate of consumption is 90/140 ml/m<sup>2</sup> depending on the application technique and surface absorbency.
- A controlled sample is recommended for exact consumption.
- Indicated rates are theoretical and may vary according to type of application and usage intensity.

## STORAGE:

- Stack up to 3 layers in original packaging.
- Must be kept indoors.
- Required precautions should be taken against water, humidity, frost and severe weather conditions.
- Must be stored on pallets and in a dry place between +10°C to +25°C.
- Punctured, opened or burst pails must be closed or used immediately.
- Storage life is 12 months in case the specified storage conditions are observed.

## WARNINGS AND PRECAUTIONS:

- Recommended amount of thinning should be performed and followed.
- Do not contact with skin, eyes and mouth and take necessary safety precautions during application.
- Avoid application at temperatures below +5°C and above +35°C, do not attempt to use frozen material by adding powder or water.
- Our company STRATA (Zirve Yapı Kimyasalları) will not be held responsible for the mistakes in case the application is performed without observing instructions indicated above, required precautions and warnings.



**COLOR  
CHART**







# COLOR CHART

S100	S109	S118	S127	S136
S101	S110	S119	S128	S137
S102	S111	S120	S129	S138
S103	S112	S121	S130	S139
S104	S113	S122	S131	S140
S105	S114	S123	S132	S141
S106	S115	S124	S133	S142
S107	S116	S125	S134	S143
S108	S117	S126	S135	S144
S200	S209	S218	S227	S236
S201	S210	S219	S228	S237
S202	S211	S220	S229	S238
S203	S212	S221	S230	S239
S204	S213	S222	S231	S240
S205	S214	S223	S232	S241
S206	S215	S224	S233	S242
S207	S216	S225	S234	S243
S208	S217	S226	S235	S244

★ We recommend to use SILICOLOUR PURE ACRYLIC at exterior.

★ There may be a price difference.

Ⓢ Digital colors are close to the original.  
It may vary depending on pc-phone and device screen features.  
Selected colors are produced based on the original color chart.

# COLOR CHART

S300	S309	S318	S327	S336
S301	S310	S319	S328	S337
S302	S311	S320	S329	S338
S303	S312	S321	S330	S339
S304	S313	S322	S331	S340
S305	S314	S323	S332	S341
S306	S315	S324	S333	S342
S307	S316	S325	S334	S343
S308	S317	S326	S335	S344
S400	S409	S418	S427	S436
S401	S410	S419	S428	S437
S402	S411	S420	S429	S438
S403	S412	S421	S430	S439
S404	S413	S422	S431	S440
S405	S414	S423	S432	S441
S406	S415	S424	S433	S442
S407	S416	S425	S434	S443
S408	S417	S426	S435	S444

★ We recommend to use SILICOLOUR PURE ACRYLIC at exterior.

★ There may be a price difference.

Ⓢ Digital colors are close to the original.  
It may vary depending on pc-phone and device screen features.  
Selected colors are produced based on the original color chart.

# COLOR CHART

S500	S509	S518	S527	S536
S501	S510	S519	S528	S537
S502	S511	S520	S529	S538
S503	S512	S521	S530	S539
S504	S513	S522	S531	S540
S505	S514	S523	S532	S541
S506	S515	S524	S533	S542
S507	S516	S525	S534	S543
S508	S517	S526	S535	S544
S600	S605	S610	S615	S620
S601	S606	S611	S616	S621
S602	S607	S612	S617	S622
S603	S608	S613	S618	S623
S604	S609	S614	S619	S624
S700	S705	S710	S715	S720
S701	S706	S711	S716	S721
S702	S707	S712	S717	S722
S703	S708	S713	S718	S723
S704	S709	S714	S719	S724

★ We recommend to use SILICOLOUR PURE ACRYLIC at exterior.

★ There may be a price difference.

Ⓞ Digital colors are close to the original.  
It may vary depending on pc-phone and device screen features.  
Selected colors are produced based on the original color chart.





# WATER INSULATION



Discover  
The Protection



Chemical Structure	Crystallized mortar with single component
Waterproofing	≥ 5 bar(negative-positive)
Compression Strength	(N/mm <sup>2</sup> ) >30
1 Bending Strength	(N/mm <sup>2</sup> ) >4
Adhesion strength	(N/mm <sup>2</sup> ) >1
Application Temperature	between +10°C and +30°C
Application Tools	Brush-Rool-Spray
Color Features	Grey
Total Drying Period	(+23°C) 24-48 hours
Average consumption	2 kg-3 kg/m <sup>2</sup>

### PRODUCT DESCRIPTION:

Cement based, negative and positive water pressure resistant crystallized waterproofing mortar, chemicals activated by water and moisture and thin aggregate, and it reacts with moisture and free lime, penetrates into the concrete in case the foundation is laid in the form of pre-concrete spreading.

### AREAS OF USAGE:

- Indoor and outdoor,
- For negative and positive water insulation of structures such as cellar screens.
- Water storage tanks, swimming pools,
- Vertical and horizontal applications,
- Can be used as spreading before foundation concrete,
- Foundation insulation and curtain walls
- On untreated surfaces such as brick, gas concrete, bims
- In reinforced concrete pipes.

### PRODUCT FEATURES:

- Resistant to positive and negative water pressure
- Crystal structure prevents water passage.
- Resistant to abrasion.
- Non-toxic. Ideal for water tanks.
- Water resistant.
- High adhesion strength.
- High flexibility and it water vapor permeable.
- It does not break, crack or bulk and fall off.
- Easy to apply.
- High mechanical strength against wear and impact.
- Resistant to salted water, grease and oil as well as being waterproof.

### PREPARING SURFACE BEFORE APPLICATION:

- Surface of the application has to be repaired.
- The surface must be free from grease, dirt, dust, paint and all kinds of materials that will prevent adhesion.
- Weak parts of the concrete should be repaired (TH100) and loose textures should be scratched.
- Surfaces to be treated must be dry or slightly damp.
- Layers such as oil, grease, dirt, paint, cement grout, rust, mold oil, or salt efflorescence which may reduce adherence must be completely removed before application.
- Surfaces must be clean, strong, free from carriers and free particles
- Cracks and fractures on the surface should be carefully repaired with TH 100 repair mortars.
- When the surface is ready, application of primer should be started.

### APPLICATION:

- It can be used as spreading before foundation concrete. It should be spread without spilling concrete over iron as 3kg/m<sup>2</sup>.
- Concrete surface should be moistened on dry floors.
- Depending on the application technique, it is mixed until lumps disappear with ~ 10 lt water for application with brush and

~ 7 lt water for application with trowel.

- Prepared mixture is applied to the surface as 2 layers with hard brush.
- Second coat application should be performed before the first coat is completely dry.
- Prepared mortar should be used within 20 minutes.
- Thickness should be 5 to 10 mm when applied with trowel.
- If desired, a thin layer of POLISTAL can be applied on the trowel application with a brush.
- Each coat application must be in a perpendicular direction to the previous one and should be finished in one go.

**NOTE:** The application should be made at least two folds. The time between coats should not exceed 5 hours. After the application is finished, surfaces should be kept moist for 5 days by spraying or splattering and prevented from drying.

### PACKAGING AND CONSUMPTION:

- Polistal is presented as a 20 kg bag.
- A controlled sample is recommended for exact consumption.
- Indicated rates are theoretical and may vary according to type of application and usage intensity.

### STORAGE:

- Stack up to 3 layers in original packaging.
- Must be kept indoors.
- Required precautions should be taken against water, humidity, frost and severe weather conditions.
- Must be stored on pallets and in a dry place between +10°C to +25°C.
- Packages or pails with holes, or opened or burst packages must be closed or used immediately.
- Storage life is 12 months in case the specified storage conditions are observed.

### WARNINGS AND PRECAUTIONS:

- Newly applied material should not be exposed to rain or frost for 24 hours.
- It should not be applied below +10°C in rainy or foggy weather.
- Do not apply on wet or frozen surface.
- Pay attention to safety signs and warnings on the package.
- Ensure adequate ventilation in workshops, avoid open flames and high temperatures.
- Mix thoroughly before application and do not leave the package open.
- Do not apply in rainy weather or when rain is expected.
- Do not contact with skin, eyes and mouth and apply when necessary safety precautions are taken.
- Avoid application at temperatures below +10°C or above +30°C, do not attempt to use frozen material by adding powder or water.
- Our company STRATA (Zirve Yapı Kimyasalları) will not be held responsible for the mistakes in case the application is performed without observing instructions indicated above, required precautions and warnings.



# FW 2K SEMI-ELASTIC

## Double Component, Semi Elastic Waterproofing Mortar



Chemical Structure	Two component water insulation mortar
Waterproofing	≥ 5 bar(positive)
Application Temperature	between +10°C and +30°C
Application Thickness	1,50 - 2,00 mm
Recoating Period	(+23°C) 5-10 hours
Application Tools	Brush-Rool-Spray
Color Features	White-Grey
Total Drying Period	(+23°C) 24-48 hours
Average consumption	3 kg-4 kg/m <sup>2</sup>

### PRODUCT DESCRIPTION:

FW 2K is a high quality semi-flexible waterproofing material that continuously protects the two-component flexibility of cement and acrylic-based powder and liquid binder.

### AREAS OF USAGE:

- In indoor and outdoor closed areas,
- Water storage tanks, swimming pools
- For vertical and horizontal applications,
- Under ceramic waterproofing, at humidity areas. (bathroom, WC, shower, kitchen)

### PRODUCT FEATURES:

- Provides long-lasting insulation.
- Resistant to abrasion.
- Non-toxic. Ideal for water tanks.
- Water-resistant.
- High adhesion strength.
- Flexible. - Water vapor permeable.
- Resistant to water ponding.
- Does not break, crack or bulk and fall off.
- Easy to apply.
- High mechanical strength against wear and impact.
- Not affected by fungal and bacteria.
- Not affected by UV rays.
- Resistant to salted water, grease and oil as well as being waterproof.
- Can fill the pores in the applied surfaces and create a barrier against the humidity.

### PREPARING SURFACE BEFORE APPLICATION:

- Surface of the application has to be repaired.
- The surface must be free from grease, dirt, dust, paint and all kinds of materials that will prevent adhesion.
- Weak parts of the concrete should be repaired and the loose textures should be scratched.
- Surfaces to be treated must be dry or slightly damp.
- Layers such as oil, grease, dirt, paint, cement grout, rust, mold oil, or salt efflorescence which may reduce adherence must be completely removed before application.
- Surfaces must be clean, strong, free from carriers and free particles
- Cracks and fractures that may be found on the surface should be prepared by repairing them carefully with STRATA Repair Mortar (TH100).
- When the surface is ready, application of primer should be started.
- Angles must be chamfered horizontally or vertically at a 45° angle and prepared for insulation in outdoor environments such as terraces.

### APPLICATION:

- Application surfaces must be primed with one coat of STRATA Poliexs AA (Universal Primer).
- FW 2K is applied after 8 hours at the latest after primer application.
- Surfaces prepared with the floor preparation should be applied in 2 layers with brush, roller and spray.
- The liquid component is placed in the mixing vessel and the powder component is slowly poured into the liquid.

- It is mixed with the help of a low speed mixer so that no lumps remain inside, without adding water.
- Wait for 5 minutes for thickening and then mix for another 20 to 30 seconds.
- Apply by brushing in one direction and spreading on corners.
- Vertical corners must be chamfered before second coating.
- Each coat application must be in a perpendicular direction to the previous one and should be finished in one go.
- Net application is recommended between two FW 2K coats.
- The prepared mortar must be used within 30 minutes.
- No extra water is added to mixture. -Always add the powder to the liquid.
- Must be waited for 5 hours between coats. Drying time may be prolonged at low temperatures and in environments with high humidity. Second coating must not be applied on surfaces which are not completely dry.

### PACKAGING AND CONSUMPTION:

- FW 2K is supplied as a set in 20 KG kraft bag in 6 kg barrel form.
- Rate of consumption varies according to the application technique and surface absorbency.
- A controlled sample is recommended for the exact consumption.
- Indicated rates are theoretical and may vary according to type of application and usage intensity.

### STORAGE:

- Stack up to 3 layers in original packaging.
- Must be kept indoors.
- Required precautions should be taken against water, humidity, frost and severe weather conditions.
- Must be stored on pallets and in dry place between +10 and +25°C.
- Pails with holes, or opened or exposed pails must be closed or used immediately.
- Storage life is 12 months in case the specified storage conditions are observed.

### WARNINGS AND PRECAUTIONS:

- Newly applied material should not be exposed to rain or frost for 24 hours.
- It should not be applied below +10°C in rainy or foggy weather
- Do not apply on wet or frozen surfaces.
- Pay attention to safety signs and warnings on the package.
- Ensure adequate ventilation in workshops, avoid open flames and high temperatures
- Mix thoroughly before application. Do not leave the lid of the package open.
- Do not apply in rainy weather or when rain is expected.
- Do not contact with skin, eyes and mouth and apply taking necessary safety precautions.
- Avoid application at temperatures below +10°C or above +30°C, do not attempt to use frozen material by adding powder or water.
- Our company STRATA (Zirve Yapı Kimyasalları) will not be held responsible for the mistakes in case the application is performed without observing instructions indicated above, required precautions and warnings.

# FW 2K FULL-ELASTIC

-Double Component, Full Elastic Waterproofing Mortar-



Chemical Structure	Two component full elastic water insulation mortar
Waterproofing	≥ 7 bar(positive)
Application Temperature	between +10°C and +30°C
Application Thickness	1,50 - 2,00 mm
Recoating Period	(+23°C) 5-10 hours
Application Tools	Brush-Rool-Spray
Color Features	White-Grey
Total Drying Period	(+23°C) 24-48 hours
Average consumption	3 kg-4 kg/m <sup>2</sup>

## PRODUCT DESCRIPTION:

FW 2K is a high quality semi-flexible waterproofing material that continuously protects the two-component flexibility of cement- and acrylic-based powder and liquid binder.

## AREAS OF USAGE:

- Indoor and outdoor spaces,
- Water storage tanks and swimming pools,
- In vertical and horizontal applications,
- Isolation of terraces, roofs and balconies,
- In foundation insulations and screen concretes,
- Under ceramic waterproofing, at humidity areas (bathroom, WC, shower, kitchen).

## PRODUCT FEATURES:

- Provides long-lasting insulation.
- Resistant to abrasion.
- Non-toxic. - Ideal for water tanks.
- Water-resistant.
- High adhesion strength.
- High elasticity. - Water vapor permeable.
- Resistant to water ponding.
- Does not break, crack or bulk and fall off.
- Easy to apply.
- High mechanical strength against wear and impact.
- Not affected by fungal and bacteria.
- Not affected by UV rays.
- Resistant to salted water, grease and oil as well as being waterproof.
- Fills the pores in the applied surfaces and creates a barrier against humidity.

## PREPARING SURFACE BEFORE APPLICATION:

- Surface of the application has to be repaired.
- The surface must be free from grease, dirt, dust, paint and all kinds of materials that will prevent adhesion.
- Weak parts of the concrete should be repaired and the loose textures should be scratched out.
- Surfaces to be treated must be dry or slightly damp.
- Layers such as oil, grease, dirt, paint, cement grout, rust, mold oil, or salt efflorescence which may reduce adherence must be completely removed before application.
- Surfaces must be clean, strong, free from carriers and free particles
- Cracks and fractures that may be found on the surface should be prepared by repairing them carefully with STRATA Repair Mortar (TH100).
- When the surface is ready, application of primer should be started.
- Angles must be chamfered horizontally or vertically at a 45° angle and prepared for insulation in outdoor environments such as terraces.

## APPLICATION:

- Application surfaces must be primed with one coat of STRATA Poliexs AA (Universal Primer).
- FW 2K is applied after 8 hours at the latest after primer application
- Surfaces prepared with the floor preparation should be applied in 2 layers with brush, roller and spray.

- The liquid component is placed in the mixing vessel and the powder component is slowly poured into the liquid.
- It is mixed with the help of a low speed mixer so that no lumps remain inside, without adding water.
- Wait for 5 minutes for thickening and then mix for another 20 to 30 seconds.
- Apply by brushing in one direction and spreading on corners.
- Vertical corners must be chamfered before second coating.
- Each coat application must be in a perpendicular direction to the previous one and should be finished in one go.
- Net application is recommended between two FW 2K coats.
- The prepared mortar must be used within 30 minutes.
- No extra water is added to mixture. - Always add the powder to the liquid.
- Must be waited for 5 hours between coats. Drying time may be prolonged at low temperatures and in environments with high humidity. Second coating must not be applied on surfaces which are not completely dry.

## PACKAGING AND CONSUMPTION:

- FW 2K is supplied as a set in 20 KG kraft bag in 10 kg barrel form.
- Rate of consumption varies according to the application technique and surface absorbency.
- A controlled sample is recommended for the exact consumption.
- Indicated rates are theoretical and may vary according to type of application and usage intensity.

## STORAGE:

- Stack up to 4 layers in original packaging.
- Must be kept indoors.
- Required precautions should be taken against water, humidity, frost and severe weather conditions.
- It must be stored on pallets and in dry place between +10°C to +25°C.
- Pails that have holes, opened and exposed must be closed or used immediately.
- Storage life is 12 months in case the specified storage conditions are observed.

## WARNINGS AND PRECAUTIONS:

- The newly applied material should not be exposed to rain or frost for 24 hours.
- It should not be applied below +10°C in rainy or foggy weather.
- Do not apply on wet or frozen surfaces.
- Pay attention to safety signs and warnings on the package.
- Ensure adequate ventilation in workshops, avoid open flames and high temperatures.
- Mix thoroughly before application and do not leave the package open.
- Do not apply in rainy weather or when rain is expected.
- Do not contact with skin, eyes and mouth and apply by taking necessary safety precautions.
- Avoid application at temperatures below +10°C or above +30°C, do not attempt to use frozen material by adding powder or water.
- Our company STRATA (Zirve Yapı Kimyasalları) will not be held responsible for the mistakes in case the application is performed without observing instructions indicated above, required precautions and warnings.



Chemical Structure	MS Polimer
Application Temperature	between +10°C and +30°C
Application Thickness	1,50-2,00 mm
Application Tools	Brush-Rool-Spray
Recoating Period	(+23°C) 5-10 hours
Thorough Drying Period	(+23°C) 24-48 hours
Average consumption	1,2 kg-1,5 kg/m <sup>2</sup>

#### PRODUCT DESCRIPTION:

MS - 09 which forms a waterproof insulation layer when applied by spreading is a polymer based, single component water insulation product.

#### AREAS OF USAGE:

- Provides good insulation of terraces, roofs and balconies,
- Good insulation for curtain concrete and joint repairs insulations for and membrane joint repairs
- Metal roofs and wood,
- On top of older problematic bituminous insulations,
- On Asphalt and concrete floors,
- Under ceramic waterproofing, in wet spaces (bathroom, WC, shower, kitchen etc.)
- As waterproofing layer on prefabricated concrete, painted steel sheet, galvanized steel sheet, in CTP gutters.
- For exterior surfaces.

#### PRODUCT FEATURES:

- Highly adhesive to the floor.
- Does not break, crack or bulk and fall off.
- Easy to apply.
- Ready to use, not thinnable.
- Demonstrates high endurance resistance against corrosion and chemicals.
- Gives surface a shiny appearance.
- Resistant to acid, petroleum products, water and solvents.
- High mechanical resistance against wear and impact.
- Not affected by fungi and bacteria.
- Not affected by UV rays.
- Resistant to salt water, grease and oil as well as being waterproof.
- Fills pores in applied surfaces and creates a barrier against humidity.

#### PREPARING SURFACE BEFORE APPLICATION:

- Surfaces to be treated must be dry or slightly damp.
- Surfaces must be clean, stable, free from carriers and free particles.
- Angles must be chamfered horizontally or vertically at a 45° angle and prepared for insulation.
- Layers such as oil, grease, dirt, paint, cement grout, rust, mold oil, or salt efflorescence which may reduce adherence must be completely removed before application.
- Primer application should be started when the surface is ready.

#### APPLICATION:

- Dilute MS-09 by 50% water and apply layer primer on to the surface as a single layer.
- MS Polymer should be applied within 8 hours max following primer application.
- For surfaces with floor preparation already performed, primer should be applied as 2 layers using brush or roller.
- Each coat application must be in a perpendicular direction to the previous one and should be finished in one time.

- In order to ensure the integrity of the seal, a chamfer must be made where it is required, either horizontally or vertically.
- Wait 5 to 10 hours between coats. Drying time may be extended at low temperatures and in environments with high humidity.

#### PACKAGING AND CONSUMPTION:

- MS 09 is offered in liquid form in 10kg and 18 kg- plastic pails and as ready to use and requires no thinning.
- Produced in Gray, White, Tile Red and RAL colors.
- Consumption rates vary according to the application technique and surface absorbency.
- A controlled sample is recommended for exact consumption.
- Indicated rates are theoretical and may vary according to type of application and usage intensity.

#### STORAGE:

- Stack up to 4 layers in original packaging.
- Must be kept indoors.
- Required precautions should be taken against water, humidity, frost and severe weather conditions.
- It must be stored on pallets and in dry place between +10°C to +25°C.
- Packages with holes, or opened or burst pails must be closed or used immediately.
- Storage life is 12 months in case the specified storage conditions are observed.

#### WARNINGS AND PRECAUTIONS:

- Do not apply on wet or frozen surface.
- Pay attention to safety signs and warnings on the package.
- Ensure adequate ventilation in jobsites, avoid open flames and high temperatures.
- Mix thoroughly before application. - Do not leave the lid of the pail open.
- Do not apply in rainy weather or when rain is expected.
- Do not contact with skin, eyes and mouth and apply when necessary safety precautions are taken.
- Avoid application at temperatures below +10°C and above +30°C, do not attempt to use frozen material by adding dust or water.
- Our company **STRATA (Zirve Yapı Kimyasalları)** will not be held responsible for the mistakes in case the application is performed without observing instructions indicated above, required precautions and warnings.



# POLİKİT

## -Acrylic Based Elastic Waterproofing Product-



Chemical Structure	Acrylic Copolymer Liquid
Application Temperature	between +10°C and +30°C
Application Thickness	1,50-2,00 mm
Recoating Period	(+23°C) 5-10 hours
Application Tools	Brush-Roller-Airless Gun
Color Properties	Yellow-Red-Grey(consult)
Total Drying Period	(+23°C) 24-48 hours
Average consumption	1,4 kg-1,7 kg/m <sup>2</sup>

### PRODUCT DESCRIPTION:

POLİKİT is a one component, plastic, glossy coating and flexible waterproofing material based on acrylic elastomeric resin which is applied by spreading.

### AREAS OF USAGE:

- Indoor and outdoor spaces; roofs, gutters and grooves, on sides of chimneys and parapets,
- Good insulation for of terraces, roofs and balconies,
- Good insulation for curtain concrete insulations and membrane joint repairs
- Metal roofs and wood,
- Asphalt and concrete floors as waterproofing layer on prefabricated concrete, painted steel sheet, galvanized steel sheet in CTP gutters.
- Exterior facades.

### PRODUCT FEATURES:

- Can be painted with acrylic based paints
- Highly adhesive to floor
- Resistant to water ponding
- Does not break, crack or bulk and fall off
- Easy to apply
- Ready to use, no need to thin the material
- Demonstrates high endurance resistance against corrosion and chemicals
- Gives surface a shiny appearance
- High mechanical resistance against abrasion and impact
- Not affected by fungal and bacteria
- Resistant to sun rays as it is not affected by UV rays
- Resistant to salted water, grease and oil as well as being impermeable
- Fills the pores in the applied surfaces and creates a barrier against humidity

### PREPARING SURFACE BEFORE APPLICATION:

- Surfaces to be treated must be dry or slightly damp.
- Layers such as oil, grease, dirt, paint, cement grout, rust, mold oil, or salt efflorescence which may reduce adherence must be completely removed before application.
- Surfaces must be clean, strong, free from carriers and free particles
- Cracks and fractures on the surface should be carefully repaired with TH(100) repair mortars.
- When the surface is ready, application of primer should be started.
- Steel surfaces should be primed with antirust.
- POLİKİT should be 40% to 50% diluted and applied as primer layer for surfaces such as fibre cement, gas concrete, briquette, tile, brick, concrete and plaster surfaces.
- Angles must be chamfered horizontally or vertically at a 45° angle and prepared for insulation in outdoor environments such as terraces.

### APPLICATION:

- POLİKİT is diluted to 50% with the product to be applied on the surfaces and a single layer primer is applied.

- POLİKİT is applied within 8 hours following primer application.
- For surfaces with floor preparation already done, primer should be applied as 2 layers using brush, roller and airless spraying.
- Each coat application must be in perpendicular direction to the previous one and should be completed in one go.
- In order to ensure the integrity of the seal, a chamfer must be made where it is required, either horizontally or vertically.
- Wait 5 to 8 hours between coats. Drying time may be prolonged at low temperatures and in environments with high humidity. Second coating must not be applied on surfaces which are not completely dry.

### PACKAGING AND CONSUMPTION:

- POLİKİT is offered in liquid for in 10kg and 20kg- plastic packages and as ready to use and requires no thinning. Available in gray, yellow and red. Contact your representative for different colors.
- The consumption rate vary according to the application technique and surface absorbency.
- A controlled sample is recommended for exact consumption.
- Indicated rates are theoretical and may vary according to type of application and usage intensity.

### STORAGE:

- Stack up to 4 layers in original packaging.
- Must be kept indoors.
- Required precautions should be taken against water, humidity, frost and severe weather conditions.
- Must be stored on pallets and in a dry place between +10°C to +25°C.
- Pails with holes, or opened or burst pails must be closed or used immediately.
- Storage life is 12 months in case the specified storage conditions are observed.

### WARNINGS AND PRECAUTIONS:

- This product is not suitable for compressed water isolation.
- Newly applied material should not be exposed to rain or frost for 24 hours.
- POLİKİT should not be applied at temperatures below +10°C, and in rainy or foggy weather
- Do not apply on wet and frozen surfaces
- Pay attention to safety signs and warnings on the package.
- Ensure adequate ventilation in jobsites, avoid open flames and high temperatures
- Mix thoroughly before application - Do not leave the lid of the package open
- Do not apply in rainy weather or when rain is expected.
- Do not contact with skin, eyes and mouth and apply when necessary safety precautions are taken.
- Avoid application at temperatures below +10°C or above +30°C, do not attempt to use frozen material by adding dust or water.
- Our company STRATA (Zirve Yapı Kimyasalları) will not be held responsible for the mistakes in case the application is performed without observing instructions indicated above, required precautions and warnings.

# POLITIGHT

## -Acrylic Based Elastic Waterproofing Product-



Chemical Structure	Acrylic Copolymer Liquid
Application Temperature	between +10°C and +30°C
Application Thickness	1,50-2,00 mm
Recoating Period	(+23°C) 5-10 hours
Application Tools	Brush-Roller-Airless Gun
Color Properties	Yellow-Red-Grey(consult)
Thorough Drying Period	(+23°C) 24-48 hours
Average consumption	1,5 kg-2 kg/m <sup>2</sup>

### PRODUCT DESCRIPTION:

POLITIGHT is a one component, plastic, glossy coating and flexible waterproofing material based on acrylic elastomeric resin applied by spreading.

### AREAS OF USAGE:

- Large-surfaced, very detailed, flat and inclined roofs,
- On terraces and balcony droppers,
- For waterproofing of canals, chimney edges, fringes, gutters and drains, it can be easily applied by everyone,
- Does not create joints and adapts to any surface,
- Indoor and outdoor,
- On metal roofs and wood,
- Suitable for use on exterior surfaces.

### PRODUCT FEATURES:

- Can be painted with acrylic based paints
- Highly adhesive to floor
- Resistant to water ponding
- Does not break, crack or bulk and fall off
- Easy to apply
- Ready to use, not thinned
- Demonstrates high endurance resistance against corrosion and chemicals.
- Gives the surface a shiny appearance.
- High mechanical resistance against wear and impact
- Not affected by fungal and bacteria.
- Resistant to sun rays as it is not affected by UV rays.
- Resistant to salted water, grease and oil as well as being impermeable.
- Can fill the pores in the applied surfaces and create a barrier against the humidity.

### PREPARING SURFACE BEFORE APPLICATION:

- Surfaces to be treated must be dry or slightly damp.
- Layers such as oil, grease, dirt, paint, cement grout, rust, mold oil, or salt efflorescence which may reduce adherence must be completely removed before application.
- Surfaces must be clean, strong, free from carriers and free particles
- Cracks and fractures on the surface should be carefully repaired with TH (100) repair mortars.
- When the surface is ready, application of primer should be started.
- Steel surfaces should be primed with antirust.
- For eternit, gas concrete, briquette, tile, brick, concrete and plaster surfaces, POLITIGHT should be diluted with 40%-50% and applied as primer layer.
- Angles must be chamfered horizontally or vertically at a 45° angle and prepared for insulation in outdoor environments such as terraces.

### APPLICATION:

- POLITIGHT is diluted to 50% with the product on the surfaces to be applied and single layer primer is applied.
- POLITIGHT is applied after 8 hours at the latest after primer application.

- For surfaces with floor preparation already done, primer should be applied as 2 layers using brush, roller and airless spraying.
- Each coat application must be in perpendicular direction to the previous one and should be completed in one time.
- In order to ensure the integrity of the seal, a chamfer must be made where it is required, either horizontally or vertically.
- Wait 5 to 8 hours between coats. Drying time may be extended at low temperatures and in environments with high humidity. Second coating must not be applied on surfaces which are not completely dry.

### PACKAGING AND CONSUMPTION:

- POLITIGHT is offered in plastic pails in 10 kg and 20 kg liquid form ready to use and requires no thinning.
- Produced in Gray-Yellow-Red colors. Contact your representative for different colors.
- The consumption rate vary according to the application technique and surface absorbency.
- A controlled sample is recommended for exact consumption.
- Indicated rates are theoretical and may vary according to type of application and usage intensity.

### STORAGE:

- Stack up to 3 layers in original packaging.
- Must be kept indoors.
- Required precautions should be taken against water, humidity, frost and severe weather conditions.
- It must be stored on pallets and in dry place between +10°C and +25°C.
- Packages with holes, or opened or burst packages must be closed or used immediately.
- Storage life is 12 months in case the specified storage conditions are observed.

### WARNINGS AND PRECAUTIONS:

- This product is not suitable for proofing of compressed water.
- Newly applied material should not be exposed to rain or frost for 24 hours.
- Thickness should be at least 1mm for applications to be exposed to sunlight.
- It should not be applied below +10°C or in rainy or foggy weather.
- Do not apply on wet or frozen surface.
- Pay attention to safety signs and warnings on the package.
- Ensure adequate ventilation in jobsites, avoid open flames and high temperatures.
- Mix thoroughly before application and do not leave the package open.
- Do not apply in rainy weather or when rain is expected.
- Do not contact with skin, eyes and mouth and apply when necessary safety precautions are taken.
- Avoid application at temperatures below +10°C or above +30°C, do not attempt to use frozen material by adding powder or water.
- Our company STRATA (Zirve Yapı Kimyasalları) will not be held responsible for the mistakes in case the application is performed without observing instructions indicated above, required precautions and warnings.

# POLIWHITE

## -Solvent-Free Elastic Water Insulation Product-



Chemical Structure	Liquid Application Insulation
Application Temperature	between +10°C and +30°C
Application Thickness	1,00-1,50 mm
Recoating Period	(+23°C) 5-10 hours
Application Tools	Brush-Roller
Color Properties	Transparent-Grey(consult)
Thorough Drying Period	(+23°C) 24-48 hours
Average consumption	0,75 kg-1,50 kg/m <sup>2</sup>

### PRODUCT DESCRIPTION:

POLIWHITE is a waterproofing material that is applied in liquid form and has very superior properties, which, when dried, turn into flexibility, impermeable, solid coating.

### AREAS OF USAGE:

- On all building materials for which water and humidity permeability is not desired,
- On the sides of the chimneys and parapets,
- On all horizontal and vertical surfaces,
- For strainer isolation,
- For isolation of terraces, roofs and balconies,
- On metal roofs and wood,
- Under ceramic waterproofing, in wet spaces (bathroom, WC, shower, kitchen)
- As waterproofing layer on prefabricated concrete, painted steel sheet, galvanized steel sheet in GRP waterways.

### PRODUCT FEATURES:

- Its application is easy and it is semi-fluid.
- It is elastic, easy to apply on solid floors.
- Provides excellent adhesion to all types of building materials.
- Maintains flexibility in hot cold differences.
- Resistant to weak chemicals and UV rays.
- Micro-porous structure allows respiration on surfaces
- Can be colored.
- Resistant to water ponding.
- Does not break, crack or bulk and fall off.
- Not affected by fungal and bacteria.
- Resistant to sun rays as it is not affected by UV rays.
- Resistant to salted water, grease and oil as well as being impermeable.

### PREPARING SURFACE BEFORE APPLICATION:

- POLIWHITE must be applied to dry and clean surfaces without moisture.
- Layers such as oil, grease, dirt, paint, cement grout, rust, mold oil, or salt efflorescence which may reduce adherence must be completely removed before application.
- Surfaces must be clean, strong, free from carriers and free particles
- Cracks and fractures on the surface should be carefully repaired with TH (100) repair mortars.
- Application surfaces must have a slope so as not to allow ponding.
- Primer application should be started when surface is ready.
- Depending on the condition of the surfaces, POLIWHITE should be thinned with 100% water and primed.
- Angles must be chamfered horizontally or vertically at a 45° angle and prepared for insulation in outdoor environments such as terraces.
- Chamfer to be made for surface defects and joints is applied with limestone cement mortar.

### APPLICATION:

- POLIWHITE is applied after 24 hours at the latest after primer application

- Surfaces prepared with the floor preparation should be applied in 2 layers without being diluted with brush and roller.
- After applying 1st layer to the horizontal and vertical joint points, chimney and strainer edges, glass-fiber mesh is laid in strips and pressed on the wet material.
- After drying, material is applied until the mesh is covered.
- Each coat application must be in a perpendicular direction to the previous one and should be finished in one go.
- Wait 5 to 8 hours between coats. Drying time may be extended at low temperatures and in environments with high humidity. Second coating must not be applied on surfaces which are not completely dry.
- In order to ensure the integrity of the seal, a chamfer must be made where it is required, either horizontally or vertically.

### PACKAGING AND CONSUMPTION:

- POLIWHITE is offered in plastic pails in 15 kg and 20 kg liquid form ready to use and it is not be thinned.
- Produced in grey and transparent colors. Contact your representative for different colors.
- Consumption rates vary according to the application technique and surface absorbency.
- A controlled sample is recommended for exact consumption.
- Indicated rates are theoretical and may vary according to type of application and usage intensity.

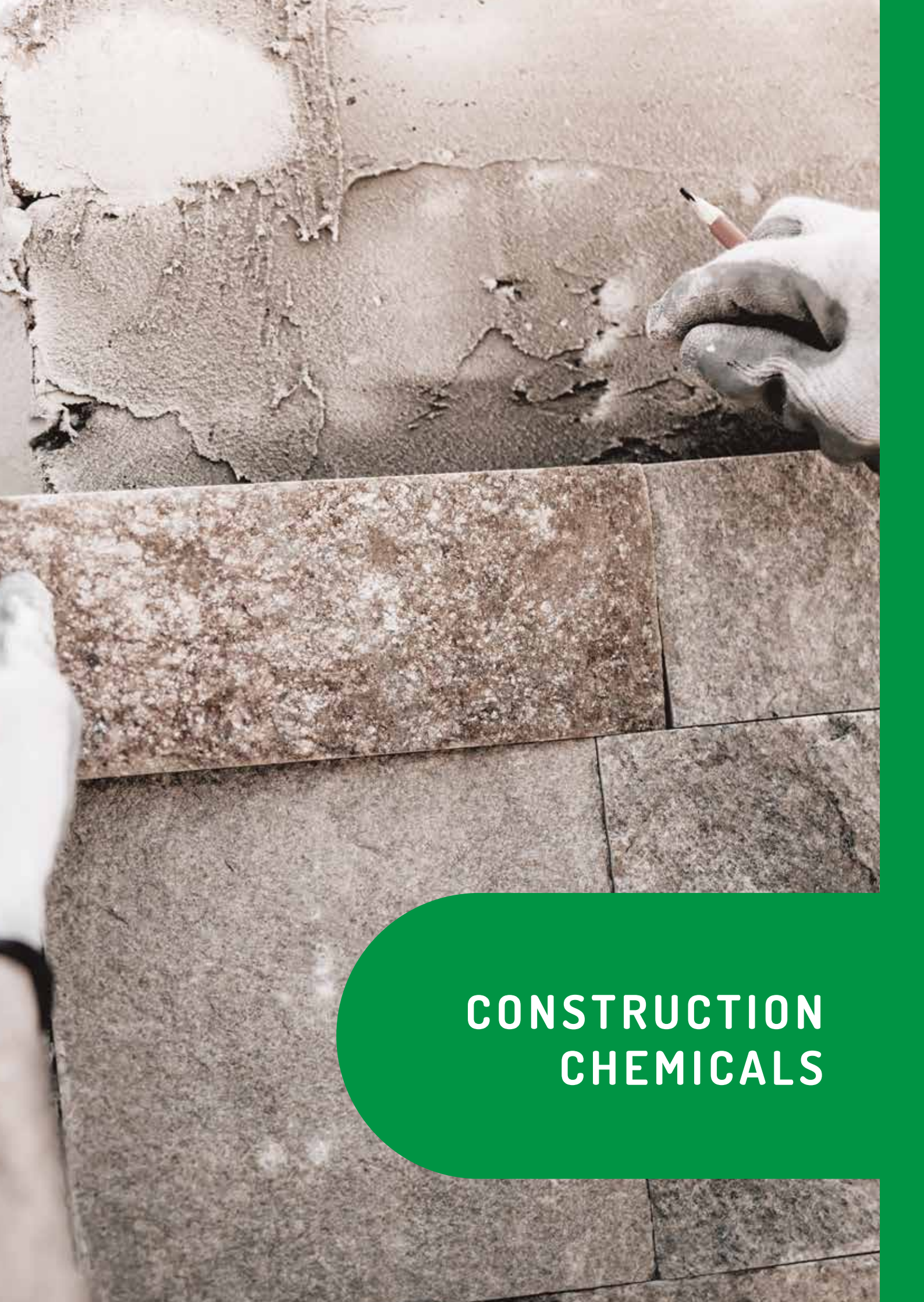
### STORAGE:

- Stack up to 3 layers in original packaging.
- Must be kept indoors.
- Necessary precautions should be taken against water, humidity, frost and severe weather conditions.
- It must be stored on pallets and in dry place between +10°C and +25°C.
- Packages with holes, or opened or burst packages must be closed or used immediately.
- Storage life is 12 months in case the specified storage conditions are observed.

### WARNINGS AND PRECAUTIONS:

- This product is not suitable for proofing of compressed water.
- Newly applied material should not be exposed to rain or frost for 24 hours.
- POLIWHITE should not be applied below + 10°C or in rainy or foggy weather conditions.
- Do not apply on wet or frozen surface.
- Pay attention to safety signs and warnings on the pails.
- Ensure adequate ventilation in jobsites, avoid open flames and high temperatures.
- Mix thoroughly before application and do not leave the package open.
- Do not apply in rainy weather or when rain is expected.
- Do not contact with skin, eyes and mouth and apply when necessary safety precautions are taken.
- Avoid application at temperatures below +10°C or above +30°C, do not attempt to use frozen material by adding powder or water.
- Our company STRATA (Zirve Yapı Kimyasalları) will not be held responsible for the mistakes in case the application is performed without observing instructions indicated above, required precautions and warnings.





**CONSTRUCTION  
CHEMICALS**



Discover

The Power



# TILEBOND

## -Ceramic Adhesive Mortar-



Initial tensile adherence strength	$\geq 0,5 \text{ N/mm}^2$
Tensile adhesion strength after immerced into water	$\geq 0,5 \text{ N/mm}^2$
Tensile adhesion resistance after freeze-thaw cycles	$\geq 0,5 \text{ N/mm}^2$
Tensile adhesion strength after aged with heat	$\geq 0,5 \text{ N/mm}^2$
Open rest adherence	$\geq 0,5 \text{ N/mm}^2$

### PRODUCT DESCRIPTION:

**TILEBOND** is a cement based, single component, environmentally friendly C1 class tile, ceramic and granite bonding mortar produced in TSE Standards, which has extra high strength and adhesion properties.

### AREAS OF USAGE:

In horizontal and vertical uses of coating materials such as ceramic, mosaic, decorative brick, natural stone, travertine,  
-In wet locations such as bathrooms and kitchens, during the application on surfaces such as concrete, plaster, screed.

### PRODUCT FEATURES:

- No slip in vertical direction.
- High strength.
- Has plastic consistency, easy to apply.
- Non-flammable.
- Resistant to severe weather conditions and humidity,
- Water vapor permeability.

### PREPARING SURFACE BEFORE APPLICATION:

Surface of the application area should be free from mold, dust, sludge, paint, etc. which prevent adhesion. Surfaces should be repaired with STRATA repair mortar (TH 100) and should be allowed to rest for at least 3 days before adhesion, if there are cracked and perforated surfaces such as cement, plaster and concrete pavement. Before applying on highly absorbent products such as aerated concrete, gypsum plaster and gypsum panel; the surface should be undercoated.

### APPLICATION:

-25kg powder version of TILEBOND ceramic bonding mortar should be added to 6-7 liters of water at a medium temperature and then mixed using a low-speed mixer until no lumps remain inside. After letting the mixture to rest for 5 minutes, it should be mixed for another 2 minutes to achieve homogeneity.

- If the application surface is level and smooth then the mortar will be spread to the surface using a combed trowel having tooth at appropriate length.
- Laying process should be started within 20 minutes, if the mortar on the surface is expired then it should be replaced with a newly prepared mortar and the old one should be scraped off.
- Commence to applying the cladding material and make it level using a hammer and finalize the application.
- Wait for 24 hours prior to proceeding joint filling process.
- Considering varying weather conditions, proceed to pin application at the end of enough curing. Recommended duration is 24 hours.
- The most important factor that should be considered in application and setting period is the weather conditions. Precautions should be taken against direct sunlight, strong wind, high temperature and weather conditions such as rain and frost and if required, application should not be performed.

### PACKAGING AND CONSUMPTION:

- In 25kg. kraft bag.
- Consumption rate varies according to application technique and application intensity between 4 kg to 5 kg/m<sup>2</sup>.
- Pot life is 3 hours and crusting time is 15 minutes.
- Indicated rates are theoretical and may vary according to type of application and usage intensity.

### STORAGE:

- Stack up to 10 layers in original packaging.
- Required precautions should be taken against water, humidity, frost and severe weather conditions.
- It must be stored on pallets and in dry place between +10°C and +25°C.
- Punctured, opened or burst packages must be closed or used immediately.
- Storage life is 12 months in case the specified storage conditions are observed.

### WARNINGS AND PRECAUTIONS:

- Do not use in moving and non-resistive areas.
- Do not contact with skin, eyes and mouth and take necessary safety precautions during application.
- Our company **STRATA (Zirve Yapı Kimyasalları)** will not be held responsible for the mistakes in case the application is performed without observing instructions indicated above, required precautions and warnings.

# TILEBOND FLEX

-High Strength Adhesive Mortar-



Initial tensile adherence strength	$\geq 1 \text{ N/mm}^2$
Tensile adhesion strength after dipped into water	$\geq 1 \text{ N/mm}^2$
Tensile adhesion resistance after freeze-thaw cycles	$\geq 1 \text{ N/mm}^2$
Tensile adhesion strength after aged with heat	$\geq 1 \text{ N/mm}^2$
Open rest adherence	$\geq 1 \text{ N/mm}^2$
Slip	min. 0,5 mm

## PRODUCT DESCRIPTION:

**TILEBOND FLEX** is a cement-based, polymer-added single component, environmentally friendly C2T class tile size ceramic marble and granite bonding mortar developed in TSE Standards which has ultra strength and enhanced adhesion, reduced slip, facilitated workmanship through longer working time.

## AREAS OF USAGE:

- In the adhesion of cladding materials such as ceramic, natural stone, travertine, decorative brick, granite, porcelain ceramic, clinker, cotto at application on surfaces such as concrete, plaster, screed in vertical and horizontal directions.
- Old ceramic tiles, granite ceramic tiles,
- Tile application on difficult surfaces such as gypsum, paint etc.
- On wet spaces such as pool water tanks,
- At locations where temperature changes occur such as cold stores, quick freezing facilities, bakery exterior surfaces and underfloor heating systems,
- Terrace and balcony applications
- Usable at locations with high pedestrian and load traffic such as shopping malls, hospitals, schools.

## PRODUCT FEATURES:

- Hydrological binding effect.
- Extra strong in adhesion of bigger tiles.
- No slip in vertical direction.
- High strength.
- Has plastic consistency, easy to apply.
- Non-flammable.
- Resistant to severe weather conditions and humidity.
- Water vapor permeability.

## PREPARING SURFACE BEFORE APPLICATION:

Surface of the application area should be free from mold, dust, sludge, paint, etc. which prevent adhesion. Surfaces should be repaired with STRATA repair mortar (TH 100) and should be allowed to rest for at least 3 days before adhesion, if there are cracked and perforated surfaces such as cement, plaster and concrete pavement. Before applying on highly absorbent products such as aerated concrete, gypsum plaster and gypsum panel; the surface should be undercoated.

## APPLICATION:

- 25kg powder version of TILEBOND FLEX ceramic bonding mortar should be added to 6-7 liters of water at a medium temperature and then mixed using a low-speed mixer until no lumps remain inside.
- After letting the mixture to rest for 5 minutes, it should be mixed for another 2 minutes to achieve homogeneity.
- If the application surface is level and smooth, then the mortar will be spread to the surface using a combed trowel having tooth at appropriate length.
- Laying process should be started within 20 minutes, if the mortar on the surface is expired then it should be replaced with a newly prepared mortar and the old one should be scraped off.
- Commence to applying the cladding material and make it level using a hammer and finalize the application.
- Wait for 24 hours prior to proceeding joint filling process. The most important factor that should be considered in application and setting period is the weather conditions.
- Precautions should be taken against direct sunlight, strong wind, high temperature and weather conditions such as rain and frost and if required, application should not be performed.

## STORAGE:

- Stack up to 10 layers in original packaging.
- Required precautions should be taken against water, humidity, frost and severe weather conditions.
- It must be stored on pallets and in dry place between +10°C and +25°C.
- Punctured, opened or burst packages must be closed or used immediately.
- Storage life is 12 months in case the specified storage conditions are observed.

## WARNINGS AND PRECAUTIONS:

- Do not use in moving and non-resistive areas.
- Do not contact with skin, eyes and mouth and take necessary safety precautions during application.
- Our company **STRATA (Zirve Yapı Kimyasalları)** will not be held responsible for the mistakes in case the application is performed without observing instructions indicated above, required precautions and warnings.



# FUGA

## -Joint Filling Mortar-



Abrasion resistance	$\leq 2000 \text{ mm}^3$
Bending resistance after dry storage	$\geq 2,5 \text{ N/mm}^2$
Bending resistance after freeze-thaw cycles	$\geq 2,5 \text{ N/mm}^2$
Pressure resistance after dry storage	$\geq 15 \text{ N/mm}^2$
Pressure resistance after freeze-thaw cycles	$\geq 15 \text{ N/mm}^2$
Determination of shrinkage	$\leq 3 \text{ mm/m}$
Water absorbency at 30 minutes	$\leq 5 \text{ gr.}$
Water absorbency at 240 minutes	$\leq 10 \text{ gr.}$

### PRODUCT DESCRIPTION:

FUGA JOINT is a joint filling mortar with various color options which is silicone- and white cement- based, polymer compounded for using at joint formations between glazed tile, ceramic, mosaic, marble, granite and similar tiles and conforming to TSE standards, easy to apply and forms a smooth surface, and applicable at 1-6 mm thickness.

### AREAS OF USAGE:

- Interior spaces,
- Floors and walls,
- Ceramic, marble, natural stones, glass mosaic plating materials
- For filling joints with 1-6 mm depth.

### PRODUCT FEATURES:

- Provides a smooth surface.
- Resistant to abrasion.
- Does not crack.
- Has color options.
- Can be produced antimicrobial on demand.

### PREPARING SURFACE BEFORE APPLICATION:

- Surface of the application area should be free from mold, dust, sludge, paint, etc. which prevent adhesion.
- Ensure that the application surface provides full dryness and durability.
- Joints should have enough depth and gaps should be fixed.
- It is recommended to apply to a smaller section to observe possible color variations, compatibility with the floor covering.

### APPLICATION:

- 20kg powder version of FUGA JOINT mortar should be added to 5.5 to 6.5 liters of water at a medium temperature and then mixed using a low-speed mixer until no lumps remain inside. After letting the mixture to rest for 5 minutes, it should be mixed for another 2 minutes to achieve homogeneity.
- Spread using rubber trowel or appropriate tool smooth and deeply, ensure that it penetrates deep.
- About half an hour later, remove excess mortar from the surface using a damp sponge.
- Drying duration is 24 hours, and 48 hours later you can walk on it.

### PACKAGING AND CONSUMPTION:

- In 20kg, kraft bag.
- Consumption rate varies according to application technique and application intensity between 0.7kg to 1.5kg/m<sup>2</sup>.
- Pot life is 3 hours and crusting time is 15 minutes.
- Indicated rates are theoretical and may vary according to type of application and usage intensity.

### STORAGE:

- Stack up to 10 layers in original packaging.
- Required precautions should be taken against water, humidity, frost and severe weather conditions.
- It must be stored on pallets and in dry place between +10°C and +25°C.
- Punctured, opened or burst packages must be used or closed immediately.
- Storage life is 12 months in case the specified storage conditions are observed.

### WARNINGS AND PRECAUTIONS:

- Do not apply at temperatures below + 5°C or above +35°C.
- Avoid applying if frozen conditions or if there is risk of frost within 24 hours or in spaces open to direct sunlight and wind.
- Do not clean the joint fillers with hydrochloric acid, bleach or similar products.
- Do not use in moving and non-resistive areas.
- Do not contact with skin, eyes and mouth and take necessary safety precautions during application.
- Our company STRATA (Zirve Yapı Kimyasalları) will not be held responsible for the mistakes in case the application is performed without observing instructions indicated above, required precautions and warnings.

# FUGA FLEX

## -Flex Joint Filling Mortar-



Abrasion resistance	$\leq 2000 \text{ mm}^3$
Bending resistance after dry storage	$\geq 2,5 \text{ N/mm}^2$
Bending resistance after freeze-thaw cycles	$\geq 2,5 \text{ N/mm}^2$
Pressure resistance after dry storage	$\geq 15 \text{ N/mm}^2$
Pressure resistance after freeze-thaw cycles	$\geq 15 \text{ N/mm}^2$
Determination of shrinkage	$\leq 3 \text{ mm/m}$
Water absorbency at 30 minutes	$\leq 5 \text{ gr.}$
Water absorbency at 240 minutes	$\leq 10 \text{ gr.}$

### PRODUCT DESCRIPTION:

FLEX FUGA JOINT is a joint filling mortar with various color options which is reinforced with polymer additives, contains silicone and white cement-based, polymer-compounded for using at joint formations between glazed tile, ceramic, mosaic, marble, granite and similar tiles and conforming to TSE standards, easy to apply and forms a smooth surface, and applicable at 1-6 mm thickness.

### AREAS OF USAGE:

- Indoor spaces,
- Floor and walls,
- Ceramic, marble, natural stone, glass, mosaic plating materials
- For filling joint gaps at 1-6 mm.

### PRODUCT FEATURES:

- Provides a smooth surface.
- Resistant to abrasion.
- Does not crack.
- With color options.
- Can be produced antimicrobial on demand.

### PREPARING SURFACE BEFORE APPLICATION:

- Surface of the application area should be free from mold, dust, sludge, paint, etc. which prevent adhesion.
- Ensure that the application surface provides full dryness and durability.
- Joints should have enough depth and gaps should be fixed.
- It is recommended to apply to a smaller section to observe possible color variations, compatibility with the floor covering.

### APPLICATION:

- 25kg powder version of FUGA FLEX JOINT mortar should be added to 5.5-6.5 liters of water at a medium temperature and then mixed using a low-speed mixer until no lumps remain inside.
- After letting the mixture to rest for 5 minutes, it should be mixed for another 2 minutes to achieve homogeneity.
- Spread using rubber trowel or appropriate tool smooth and deeply, ensure that it penetrates deep.
- About half an hour later, remove excess mortar from the surface using a damp sponge.
- Drying duration is 24 hours, and 48 hours later you can walk on it.

### PACKAGING AND CONSUMPTION:

- In 20 kg, kraft bag.
- Consumption rate varies according to application technique and application intensity between 0.7kg to 1.5kg / m<sup>2</sup>.
- Pot life is 3 hours and crusting time is 15 minutes.
- Indicated rates are theoretical and may vary according to type of application and usage intensity.

### STORAGE:

- Stack up to 10 layers in original packaging.
- Required precautions should be taken against water, humidity, frost and severe weather conditions.
- It must be stored on pallets and in dry place between +10°C and +25°C.
- Punctured, opened or burst packages must be used or closed immediately.
- -Storage life is 12 months in case the specified storage conditions are observed.

### WARNINGS AND PRECAUTIONS:

- Do not apply at temperatures below + 5°C or above +35°C.
- Avoid applying if frozen conditions or if there is risk of frost within 24 hours or in spaces open to direct sunlight and wind.
- Do not clean the joint fillers with hydrochloric acid, bleach or similar products.
- Do not use in moving and non-resistive areas.
- Do not contact with skin, eyes and mouth and take necessary safety precautions during application.
- Our company STRATA (Zirve Yapı Kimyasalları) will not be held responsible for the mistakes in case the application is performed without observing instructions indicated above, required precautions and warnings.

# TH-100

## -Single Component Repair Mortar-



Non-structural repair	Class R1
Mortar type	PCC
Bending strength	$\geq 3$ N/mm <sup>2</sup>
Pressure strength	$\geq 15$ N/mm <sup>2</sup>
Adherence strength	$\geq 1$ N/mm <sup>2</sup>
Fire resistance	A1 Class

### PRODUCT DESCRIPTION:

It is a cement based, thin repair mortar with polymer and fiber reinforced thick aggregate, anti-cracking feature, suitable for manual use on the inside and outside, unqualified with excellent water vapor permeability.

### AREAS OF USAGE:

- On inner and outer surfaces of all structures,
- Used as a concrete repair and bedding mortar on walls and ceilings.
- Used as a repair plaster on surfaces before the application of granite ceramic.

### PRODUCT FEATURES:

- Used as thin TH-100 (1-5mm)
- Used as thick TH-100 (5-30mm)
- Very easy to use.
- Can be prepared for use with adding only water.
- Resistant to Freeze-Thaw cycle.
- Has high pressure strength.
- Does not shrink, resistant to oils.
- Can work with old concrete surfaces in a monolithic way as it has a high adherence.

### PREPARING SURFACE BEFORE APPLICATION:

- Application surface should be free of substances that may inhibit adherence such as molding oil, dust, slag, paint etc. Swelled surfaces (such as cement, plaster and concrete residues) should be scraped off.
- Wet the surface without ponding and ensure to keep it damp.

### APPLICATION:

- 25kg powder version of TH-100 REPAIR MORTAR, should be added to 5 to 6 liters of water at a medium temperature and then mixed using a low-speed mixer until no lumps remain inside.
- After letting the mixture to rest for 5 minutes, it should be mixed for another 2 minutes to achieve homogeneity.
- Applied on the application surface using a trowel in 1 to 5mm thickness.
- For a thicker application, wait for the first layer to dry thoroughly and apply a second coating.
- The most important factor that should be considered in application and setting period is the weather.
- Precautions should be taken against direct sunlight, strong winds, high temperatures and weather conditions such as rain and frost.
- Application should not be performed, if needed.

### PACKAGING AND CONSUMPTION:

- In 25 kg. kraft bag.
- Varying depending on application technique and application intensity, consumption rate is 1.5kg/m<sup>2</sup> for 1 mm-thickness.
- Pot life is 3 hours and crusting time is 15 minutes.
- Indicated rates are theoretical and may vary according to type of application and usage intensity.

### STORAGE:

- Stack up to 10 layers in original packaging.
- Required precautions should be taken against water, humidity, frost and severe weather conditions.
- It must be stored on pallets, in a dry place between +10°C and +25°C.
- Punctured, opened or burst packages must be closed or used immediately.
- Storage life is 12 months in case the specified storage conditions are observed.

### WARNINGS AND PRECAUTIONS:

- Do not use in moving and non-resistant areas.
- Do not apply at temperatures below + 5°C or above +35°C.
- Avoid applying if frozen conditions or if there is risk of frost within 24 hours or in spaces open to direct sunlight and wind.
- Do not apply on gypsum, paint or colored plaster.
- It is recommended to keep it damp until the mortar is cured.
- Do not contact with skin, eyes and mouth and take necessary safety precautions during application.
- Our company **STRATA (Zirve Yapı Kimyasalları)** will not be held responsible for the mistakes in case the application is performed without observing instructions indicated above, required precautions and warnings.



# POLIANK (GROUT MORTAR)

## -Repair and Anchorage Mortar-



Dry Density	1950±200 gr/lt
Shrinkage Expansion	≥ 2 N/mm <sup>2</sup>
Machinability Duration	≤ 10 min.
Pressure Strength	≥ 55 N/mm <sup>2</sup>
Adherence Strength	≥ 2 N/mm <sup>2</sup>
Water Soluble Chlorine Content	0,05%
Particle Size	≥ 2 mm

### PRODUCT DESCRIPTION:

It is a cement based, non-shrinking, self-spreading anchorage and repair mortar with high adherence and strength.

### AREAS OF USAGE:

- In filling gaps,
- In concrete repair,
- In filling machine bases,
- For indoor and outdoor applications,
- In road and bridge connections,
- When fixing steel columns to the ground,
- It is used for multi-purpose anchoring works.

### PRODUCT FEATURES:

- Very easy to use.
- Can be prepared for use with adding only water.
- Gains strength rapidly.
- After 15 minutes, you can walk on it.
- 1 hour later, it can be opened to vehicle traffic.
- Can be used at every location as it is non-shrinking.
- Its strength and abrasion resistance is high.
- Can work with old concrete surfaces in a monolithic way as it has a very high adherence.

### PREPARING SURFACE BEFORE APPLICATION:

- Application surface should be free of any kind of substances and wet the surface without ponding and ensure to keep it damp.
- Molding systems should be sturdy and until mortar is hardened any vibration should be prevented, fixed sections should be leveled and no position change should be made.

### APPLICATION:

- 4 kg to - 4.5 kg of clean water should be mixed with 25 kg of POLIANK Mortar and mix with low-speed mixer at the same time. Mix for at least 5 minutes to obtain an homogeneous thickness.
- To prevent air from getting caught within the mortar, it will be poured in a continuous manner from one side and in a way to ensure 10 mm-40 mm thickness.
- Due to its viscosity, pouring can be made with a pump.
- Wait for 24 hours prior to remove molds.
- With reference to weather conditions and ground condition, average hardening duration will be 10 minutes and time to walk on is 20-30 minutes.
- For anchoring machines, the machine should not be operated for at least 12 hours.
- The most important factor that should be considered in application and setting period is the weather conditions.
- Precautions should be taken against direct sunlight, strong winds, high temperatures and weather conditions such as rain and frost and if required, application should not be performed.

### PACKAGING AND CONSUMPTION:

- In 25 kg. kraft packages.
- Varying according to application technique and application intensity, consumption rate is 2 kg/m<sup>2</sup> for 1mm thickness.
- The stated ratios are in the theoretical standards and the application may vary according to the shape and usage intensity.

### STORAGE:

- Stack up to 10 layers in original packaging.
- Required precautions should be taken against water, humidity, frost and severe weather conditions.
- It must be stored on pallets and in dry place between +10°C to +25°C.
- Punctured, opened or burst packages must be closed or used immediately.
- Storage life is 12 months in case the specified storage conditions are observed.

### WARNINGS AND PRECAUTIONS:

- Do not use in moving and non-resistive areas.
- Do not apply at temperatures below + 5°C or above +35°C.
- Avoid applying if frozen or there is risk of getting frozen within 24 hours or at spaces open to direct sunlight and wind.
- It is recommended to keep it damp until the mortar is cured.
- Do not contact with skin, eyes and mouth and take necessary safety precautions during application.
- Our company STRATA (Zirve Yapı Kimyasalları) will not be held responsible for the mistakes in case the application is performed without observing instructions indicated above, required precautions and warnings.

# GY-100

## -Masonry Mortar-



Planned Prepared Thin Coat Mortar (T)	-
Workability Duration	≥ 2 hours
Pressure Strength	M10 N/mm <sup>2</sup>
Water Absorbency	≤ 0,5 kg/m <sup>2</sup> .dk.0,5
Water Vapor Permeability Coefficient (M)	5/20
Density	1300±300 kg/m <sup>3</sup>
Aggregate Biggest Particle Size	≤ 1 mm
Rectifiable Duration	≥ 10 min.
Fire Resistance	A1 Class

### PRODUCT DESCRIPTION:

It is a cement-based, single component, polymer-added masonry mortar with high adhesive strength, suitable for bonding gas concrete and porous block elements.

### AREAS OF USAGE:

- Gas concrete, brick, briquette and bims masonry.

### PRODUCT FEATURES:

- High strength.
- Non-flammable.
- Resistant to severe weather conditions and humidity.
- Suitable for aerated concrete, brick and bims masonry.
- Has hydrological bonding property.

### PREPARING SURFACE BEFORE APPLICATION:

- Applicable surface should be stable and has strength to carry loads.
- Surfaces should be free of dust, residues, paint and degrading substances such as molding oil.
- The surface on which masonry will be performed, should be rectified using screed if there are any irregularities and smoothed.
- If required the surface should be wetted prior to application.

### APPLICATION:

- 25 kg. Add GY 100 to 6 to 7 liters of clean water and mix with low-speed mixer so that no lumps remain inside.
- Let the prepared mortar rest for 5-10 minutes and then mix again to prepare it for application.
- Bottom and side surfaces of aerated concrete that are in contact with the structure mortar should be wetted, other surfaces do not need wetting.
- Bonded blocks should be fixed by hammering on the top and sides.
- Bond the gas concrete and other masonry materials on to the chiseled mortar within 10-15 minutes.
- Application at temperatures under 5°C and above +35°C should be avoided.
- Should not be used adding powder and water to frozen material.

### PACKAGING AND CONSUMPTION:

- In 25kg. kraft packages.
- Rate of consumption is between 4-7 kg /m<sup>2</sup> depending on the application technique and application intensity (varies depending on the dimension of the material)
- Pot life is 3 hours and crusting time is 15 minutes.
- Indicated rates are theoretical and may vary according to type of application and usage intensity.

### STORAGE:

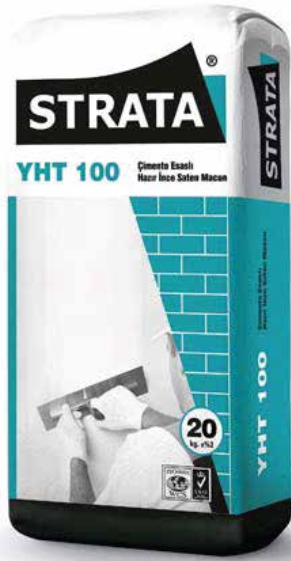
- Stack up to 10 layers in original packaging.
- Required precautions should be taken against water, humidity, frost and severe weather conditions.
- It must be stored on pallets and in dry place between +10°C and +25°C.
- Punctured, opened or burst packages must be used or closed immediately.
- Storage life is 12 months in case the specified storage conditions are observed.

### WARNINGS AND PRECAUTIONS:

- Gaps should kept at minimum.
- Do not use in moving and non-resistive areas.
- Do not contact with skin, eyes and mouth and take necessary safety precautions during application.
- Our company STRATA (Zirve Yapı Kimyasalları) will not be held responsible for the mistakes in case the application is performed without observing instructions indicated above, required precautions and warnings.

# YHT-100

-Ready-to-use Satin Paste-



Gloss	G3
Dry Film Thickness	E5
Particle Size	S2

#### PRODUCT DESCRIPTION:

It is a cement-based ready-to-use satin finish which is used to obtain a smooth finish surface ready for coating on indoor and outdoor gypsum plaster and gypsum board surfaces, concrete surfaces, surfaces.

#### AREAS OF USAGE:

- On horizontal and vertical surfaces,
- In interior and exterior spaces,
- Used on surfaces such as gas concrete, gypsum panel, betopan and gross concrete.

#### PRODUCT FEATURES:

- Requires no primer
- Provides ready-to-paint surfaces.

#### PREPARING SURFACE BEFORE APPLICATION:

- Application surface should be free of substances that may inhibit adherence such as molding oil, dust, slag, paint and similar and swelled surfaces (such as cement, plaster and concrete residues) should be scraped off.
- Wet the surface without ponding and ensure to keep it damp.
- Use primer on surfaces with high water absorbency.

#### APPLICATION:

- 20 kg powder version of YHT-100 should be added to 9 liters of water at a medium temperature and then mixed using a low-speed mixer until no lumps remain inside.
- After letting the mixture to rest for 5 minutes, it should be mixed for another 2 minutes to achieve homogeneity.
- Apply on the application surface using a trowel in 2-3 mm thickness.
- For a thicker application, wait for the first layer to dry completely and apply a second coating.
- On surfaces with high liquid absorbency, apply a suitable Strada primer on the surface.
- The most important factor that should be considered in application and setting period is the weather conditions. Precautions should be taken against direct sunlight, strong winds, high temperatures and weather conditions such as rain and frost and if required, application should not be performed.

#### PACKAGING AND CONSUMPTION:

- In 20 kg. kraft packages.
- Consumption rate varies according to application technique and application intensity, is 1.1 kg m<sup>2</sup> for 1 mm thickness.
- Pot life is 3 hours and crusting time is 15 minutes.
- Indicated rates are theoretical and may vary according to type of application and usage intensity.

#### STORAGE:

- Stack up to 10 layers in original packaging.
- Required precautions should be taken against water, humidity, frost and severe weather conditions.
- It must be stored on pallets and in dry place between +10°C and +25°C.
- Punctured, opened or burst packages must be used or closed immediately.
- Storage life is 12 months in case the specified storage conditions are observed.

#### WARNINGS AND PRECAUTIONS:

- Do not use in moving and non-resistive areas.
- Do not apply at temperatures below + 5C and above +35C.
- Avoid applying if frozen or in case of risk of getting frozen within 24 hours or at spaces open to direct sunlight and wind.
- Do not contact with skin, eyes and mouth and take necessary safety precautions during application.
- Our company STRATA (Zirve Yapı Kimyasalları) will not be held responsible for the mistakes in case the application is performed without observing instructions indicated above, required precautions and warnings.





**REPAIR AND  
STRENGTHENING**



Discover  
The Strengthening

# POLIEX A

## -Levelling Screed Primer-



### PRODUCT DESCRIPTION:

It is a water based, acrylic based, self leveling floor primer in liquid form suitable for absorbent and porous surfaces.

### AREAS OF USAGE:

- Indoor and outdoor spaces,
- On all surface before self leveling,
- In horizontal use,

### PRODUCT FEATURES:

- Ready to use, easy to apply.
- Increases frost strength.
- Decreases surface dust.
- Decreases risk of cracks
- Saves on time and workmanship.
- Has binder characteristic.
- Has durability strength.
- Preserves water within concrete structure and provide the highest resistance possible.
- Non-flammable.
- Prevents rapid drying and shrinking.

### PREPARING SURFACE BEFORE APPLICATION:

- Application surface should be intact, clean and dry.
- The surface should be free of paint, dust and other substances that will inhibit adherence.
- Required repairs should be made with STRATA Repair Mortar (TH100) on old surfaces.

### APPLICATION:

- Apply with brush, roller or spraying.
- POLIEX A application is applied 0.5 to 2 hours later after the completion of all leveling, polishing and hardening applications depending on weather temperature.
- Wait for the concrete to settle enough in order not to damage the surface while applying with brush and roller.

### PACKAGING AND CONSUMPTION:

- Produced in 10 kg barrel.
- Consumption rate varies according to application technique and application intensity between 0.150 kg to 0.20 kg/m<sup>2</sup>.
- Indicated rates are theoretical and may vary according to type of application and usage intensity.

### STORAGE:

- Required precautions should be taken against water, humidity, frost and severe weather conditions.
- It must be stored on pallets and in dry place between +10°C to 35°C.
- Punctured, opened or burst barrels must be closed or used immediately.
- Storage life is 12 months in case the specified storage conditions are observed.

### WARNINGS AND PRECAUTIONS:

- Adverse weather conditions such as strong wind, direct sunlight and frost should be observed on the applied surfaces and the application should be directly exposed to those factors.
- Application surface should protected against external factors for 24 hours while curing at open spaces.
- Do not contact with skin, eyes and mouth and apply when necessary safety precautions are taken.
- Our company STRATA (Zirve Yapı Kimyasalları) will not be held responsible for the mistakes in case the application is performed without observing instructions indicated above, required precautions and warnings.



# POLİEX

-Acrylic Resin-Based Floor Curing Material-



## PRODUCT DESCRIPTION:

It is an acrylic resin-based curing material applied on concrete, screed and cement based surface hardener, forming a protective film layer that does not penetrate water vapor and prevents cracking on the surface.

## AREAS OF USAGE:

- Indoor and outdoor spaces,
- On freshly poured concrete,
- For concrete curing on all surface hardener applications,
- In horizontal use,
- On applicable surfaces such as shopping centers, garages, parking lots, warehouses, factories, schools, hospitals, housing, etc.

## PRODUCT FEATURES:

- Ready to use, easy to apply.
- Increases frost resistance.
- Decreases surface dust.
- Decreases risk of cracks.
- Saves time and workmanship.
- Has binding property.
- Has durability strength.
- Preserves water within concrete structure and provides the highest resistance possible.
- Non-flammable.
- Prevents rapid drying and shrinking.

## PREPARING SURFACE BEFORE APPLICATION:

- Application surface should be robust, clean and dry.
- The surface should be free of paint, dust and other substances that will inhibit adherence.

## APPLICATION:

- Apply with brush, roller or spraying.
- POLİEX application, depending on weather temperature, is performed 0.5 - 2 hours later after the completion of all leveling, polishing and hardening applications.
- While applying with brush and roller, wait for the concrete to settle enough in order not to damage the surface.

## PACKAGING AND CONSUMPTION:

- Produced in 30 kg barrels.
- Consumption rate varies according to application technique and application intensity between 0.150kg to 0.200kg / m<sup>2</sup>.
- Indicated rates are theoretical and may vary according to type of application and usage intensity.

## STORAGE:

- Required precautions should be taken against water, humidity, frost and severe weather conditions.
- It must be stored on pallets and in dry place between +10°C to 35°C.
- Punctured, opened or burst barrels must be closed or used immediately.
- Storage life is 12 months in case the specified storage conditions are observed.

## WARNINGS AND PRECAUTIONS:

- Adverse weather conditions such as strong wind, direct sunlight and frost should be observed on the applied surfaces and the application should be directly exposed to those factors.
- While curing at open spaces, the application surface should be protected against external factors for 24 hours.
- Do not leave as a last coat and the finishing material should be laid down depending on the dry time.
- Do not contact with skin, eyes and mouth and apply when necessary safety precautions are taken.
- Our company STRATA (Zirve Yapı Kimyasalları) will not be held responsible for the mistakes in case the application is performed without observing instructions indicated above, required precautions and warnings.

# POLİEX 1

-Ready-to-Use Screed-



## PRODUCT DESCRIPTION:

It is a cement-based, polymer-reinforced, environmentally friendly rectifying screed, ready to use in a short time with a fluid structure, by fast freezing and at an average thickness of 10 cm.

## AREAS OF USAGE:

- Indoor spaces,
- In horizontal use,
- Shopping malls,
- Elevation application on existing concrete and before manufacturing with mortar.
- It is used on convenient floors such as school, hospital and so on.

## PRODUCT FEATURES:

- Ready to use,
- Easy to apply.
- Saves on time and workmanship,
- Applicable manually or with plaster and screed machines.
- Polymer reinforced,
- Has binding property,
- Hardens without cracking when used as per the instructions,
- Prepares the surface prior to grouted covering material.
- Non-flammable.

## PREPARING SURFACE BEFORE APPLICATION:

- Application surface should be robust, clean and dry.
- The surface should be free of paint, dust and other substances that may inhibit adherence.
- On old surfaces, required repairs should be made with TH (100) repair mortars.

## APPLICATION:

- Prior to applying manually, preparation is as follows:
- Add powder material to 3.5 - 4 liter of water, mix with a low-speed mixer until no lumps remain inside, mix for maximum 5 minutes.
- After the process, wait for 2 minutes and then mix until an homogeneous mixture is obtained.
- With the aid of a gauge, spread or pump the screed until desired thickness is obtained.
- After the screed is spread and desired thickness is obtained, proceed to surface smoothing with a suitable gage/trowel and continue the process without leaving any gaps.
- When required hardness is reached, polishing can be made.
- Waiting period for last detail furnishing:
  - 1)Average for carpets and ceramic: 12 hours
  - 2)For hardwood: 24 hours

## PACKAGING AND CONSUMPTION:

- In 25 kg. kraft bag.
- Consumption rate varies according to application technique and application intensity (17 kg - 19 kg/m<sup>2</sup> for 1 cm thickness).
- Opened bags should be consumed within 7 days.
- Indicated rates are theoretical and may vary according to type of application and usage intensity.

## STORAGE:

- Stack up to 10 layers in original packaging.
- Required precautions should be taken against water, humidity, frost and severe weather conditions.
- It must be stored on pallets and in dry place between +10°C and +35°C.
- Punctured, opened or burst bags must be used or closed immediately.
- Storage life is 12 months in case the specified storage conditions are observed.

## WARNINGS AND PRECAUTIONS:

- Adverse weather conditions such as strong wind, direct sunlight and frost should be observed on the applied surfaces and the application should not be directly exposed to those factors.
- Newly applied surfaces should be protected against direct sunlight and adverse weather conditions.
- Do not leave as a last coat and the finishing material should be laid down depending on the dry time.
- Do not contact with skin, eyes and mouth and take necessary safety precautions during application.
- Our company STRATA (Zirve Yapı Kimyasalları) will not be held responsible for the mistakes in case the application is performed without observing instructions indicated above, required precautions and warnings.

# POLİEX 5

## -Self-Spreading Ready-to-Use Leveling Screed-



Initial Setting Duration	15-30 min.
Final Setting Duration	60-90 min.
Compression Strength (TS EN 13813)	$\geq 35$ N/mm <sup>2</sup> (28 days) - C35
Bending Strength (TS EN 13813)	$\geq 7$ N/mm <sup>2</sup> (28 days) - F7
Bohme Abrasion Resistance (TS EN 13813)	$\leq 20$ cm <sup>3</sup> /50 cm <sup>2</sup> - A22
Fire Resistance	A1

### PRODUCT DESCRIPTION:

Cement based, polymer-reinforced, gray colored leveling mortar in powder form composed of environmentally friendly additives; has a fluid structure, self-leveling floors and a high performance in removing surface irregularities; ready to use in a short time.

### AREAS OF USAGE:

- Used to obtain a smooth surface under PVC, linoleum, laminate parquet, wood, carpet, ceramic coating.
- Used for smoothing concrete and screed surfaces.
- Provides smoothing and leveling of existing pavement, mosaic, natural stone surfaces.
- Resistant to abrasion and dust in floors exposed to heavy pedestrian and load traffic such as warehouses, etc.

### PRODUCT FEATURES:

- Levels due to its self-spreading characteristic.
- High adhesion strength.
- Applicable in 2.5-10mm thickness without any contraction, cracking and deterioration.
- Its bending and compression strengths are high.
- Resistant to abrasion.
- Non-flammable.

### PREPARING THE SURFACE BEFORE APPLICATION:

- Application surface should be robust, clean and dry.
- The surface should be free of paint, dust and other substances that may inhibit adherence.
- On old surfaces, required repairs should be made with TH (100) repair mortars.

### APPLICATION:

- Remove surface absorbency with priming the concrete surface with POLİEX A leveling screed before application.
- Prior to applying manually, preparation is as follows:
  - Add powder material to 3.5 - 4 liter of water, mix with a low-speed mixer until no lumps remain inside, mix for maximum 5 minutes.
  - After the process, wait for 2 minutes and then mix until an homogeneous mixture is obtained.
- With the aid of a gauge, spread or pump the screed until desired thickness is obtained.
- After the screed is spread and desired thickness is obtained, proceed to surface smoothing with a suitable gage/trowel and continue the process without leaving any gaps.
- When required hardness is reached, polishing can be made.
- Duration to wait before final detail laying:
  - 1) For carpet and ceramics, average: 12 hours
  - 2) For hardwood: 24 hours

### PACKAGING AND CONSUMPTION:

- In 25 kg. kraft bag.
- Consumption rate varies according to application technique and application intensity between 1.5 kg to 1.8 kg/m<sup>2</sup>.
- Opened packages should be consumed within 7 days.
- Indicated rates are theoretical and may vary according to type of application and usage intensity.

### STORAGE:

- Stack up to 10 layers in original packaging.
- Required precautions should be taken against water, humidity, frost and severe weather conditions.
- It must be stored on pallets and in dry place between +10°C and +35°C.

### WARNINGS AND PRECAUTIONS:

- Adverse weather conditions such as strong wind, direct sunlight and frost should be observed on the applied surfaces and the application should not be directly exposed to those factors.
- Newly applied surfaces should be protected against direct sunlight and adverse weather conditions.
- Do not leave as a last coat and the finishing material should be laid down depending on the dry time.
- Do not contact with skin, eyes and mouth and take necessary safety precautions during application.
- Our company STRATA (Zirve Yapı Kimyasalları) will not be held responsible for the mistakes in case the application is performed without observing instructions indicated above, required precautions and warnings.



# ZR 100 S

## -Surface Hardener-



### PRODUCT DESCRIPTION:

It is a cement based, high quality, environmentally friendly product used as a fresh concrete surface hardener, containing quartz or silica aggregate, ready to use; a surface hardener in powder form to prevent abrasion against light and medium loads.

### AREAS OF USAGE:

- Indoor and outdoor,
- On floors exposed to abrasion,
- On floors not exposed to intensive and heavy loads,
- In horizontal use,
- In the construction of garages, roads and pavements,
- Factory floors, parking lots, gas stations and on similar suitable floors.

### PRODUCT FEATURES:

- Non-oxidizing
- Superior impact performance with respect to standard concrete,
- Used for obtaining non-dusting smooth surfaces,
- Improves water impermeability of concrete,
- Resistant to intense traffic over the ground,
- Resistant to severe weather conditions and humidity,
- Available in various colors,
- Easy to apply,
- Non-flammable,
- Can be produced in gray, green and red colors.

### PREPARING SURFACE BEFORE APPLICATION:

- The fresh concrete surface to where ZR 100 S Surface hardener will be applied should be smoothed with a trowel.
- Before pouring fresh concrete, apply POLIEXS AA general purpose primer on the old and new concrete surfaces.
- There should be no excess water on the surface.
- Any ponding should be removed.

### APPLICATION:

- The application process should start when previously poured concrete's viscosity reaches a level where a footprint forms when stepped on.
- First sprinkle 2/3 of the material on to the surface, then wait for the material to absorb the surface humidity
- When the surface viscosity reaches a point where walking on it is possible, the remaining material will be spread on the surface in a homogeneous manner,
- After the product penetrates into the surface and it is smoothed, tray polishing will be made to make surface absorb the material.
- To prevent post-application shrinking cracks and to enhance surface hardener's performance STRATA POLICURE 100 - POLICURE 200 or POLIEX curing primer should be used.

### PACKAGING AND CONSUMPTION:

- In 25 kg. kraft packages.
- Consumption rate varies according to application technique and application intensity between 4 kg to 5 kg/m<sup>2</sup>.
- Opened packages should be consumed within 7 days.
- Indicated rates are theoretical and may vary according to type of application and usage intensity.

### STORAGE:

- Stack up to 10 layers in original packaging.
- Required precautions should be taken against water, humidity, frost and severe weather conditions.
- It must be stored on pallets and in dry place between +10°C and +35°C.
- Punctured, opened or burst packages must be closed or used immediately.
- Storage life is 12 months in case the specified storage conditions are observed.

### WARNINGS AND PRECAUTIONS:

- Adverse weather conditions such as strong wind, direct sunlight and frost should be observed on the applied surfaces and the application should not be directly exposed to those factors.
- To prevent a rapid setting, water should be sprinkled onto the application surface and the surface should be covered with folio, if required.
- Depending on appropriate temperature levels, joint sections should be completed within 2-3 days following the application.
- Newly applied surfaces should be protected against direct sunlight and adverse weather conditions.
- Do not contact with skin, eyes and mouth and take necessary safety precautions during application.
- Our company STRATA (Zirve Yapı Kimyasalları) will not be held responsible for the mistakes in case the application is performed without observing instructions indicated above, required precautions and warnings.



**TIGER**

ceiling systems



# ACCESS PANELS

A person wearing a dark tweed jacket and blue jeans is holding a large, plain white rectangular box. The person is standing in a living room with a beige sofa, a wooden coffee table, and a checkered rug. The background is a simple, light-colored wall.

*Discover  
The Access*



## STANDART ACCESS PANEL



Product Code: TSTG



Touch - Open System  
Safety harness  
Optionally, multi-opening (2-5) system can be produced in certain sizes.

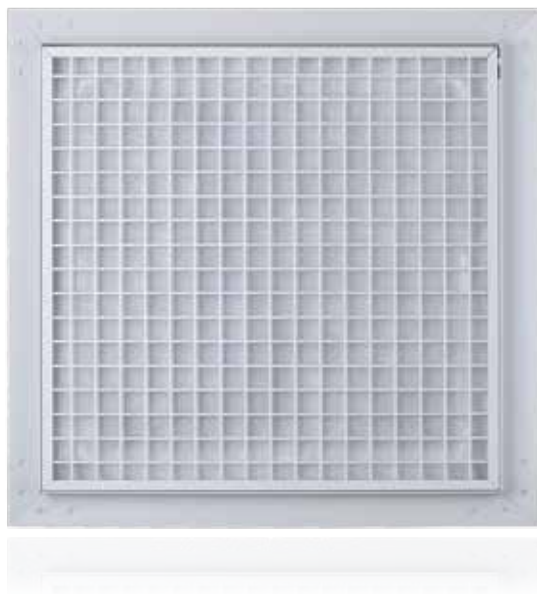


20x20 cm - 60x60 cm in the range.  
Custom sizes are available upon request



Fire and moisture resistant production is made upon request.

## HONEYCOMB ACCESS PANEL



Product Code: TPHRC



Touch - Open System

Safety harness

Optionally, multi-opening (2-5) system can be produced in certain sizes.



20x20 cm - 60x60 cm in the range.

Custom sizes are available upon request.



Acoustic fabric details and honeycomb PVCs provide free suction / free ventilation. It helps the mechanical equipment behind it to work more efficiently.

## MULTIPLE OPENING ACCESS PANEL



Product Code: TMLT



Touch - Open System  
Safety harness  
Available in TZR, TSTG, TPRHC, TPRO models.



30x60 cm - 30x120 cm in the range.  
Custom sizes are available upon request.



It plays an active role in the presence of sequential mechanical equipment.  
Makes working conditions more efficient.

## ACOUSTIC ACCESS PANEL



Product Code: TAQ



Touch - Open System  
Safety harness  
Optionally, multi-opening (2-5) system can be produced in certain sizes.



20x20 cm - 60x60 cm in the range.  
Custom sizes are available upon request.



Utilizing for acoustic ceiling integrity and ensuring sound insulation.



## CORDED ACCESS PANEL



Product Code: TSTF



Touch - Open System

Safety harness

Fire and moisture resistant production is made upon request



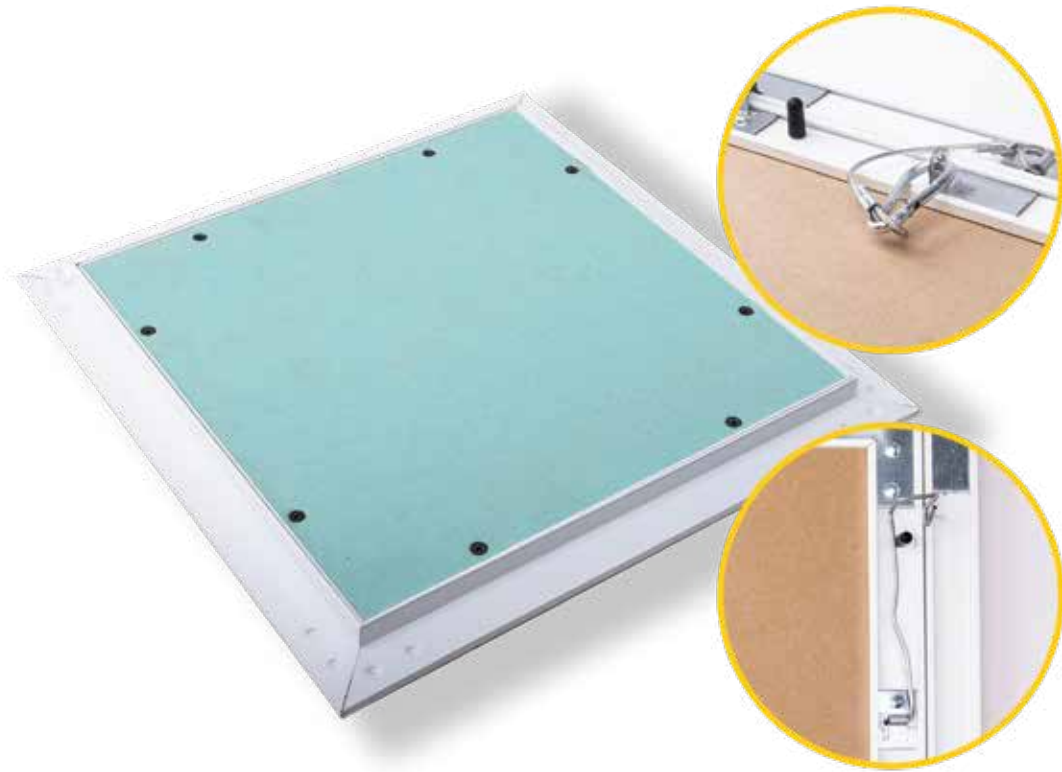
20x20 cm – 60x60 cm in the range.

Custom sizes are available upon request.



The hair wick between the inner panel and the outer frame insulates light and dust and provides an aesthetic appearance to the panel.

## CARABINER ACCESS PANEL



Product Code: TST.CR



Carabiner (hook and steel wire) system



20x20 cm - 60x60 cm in the range.  
Custom sizes are available upon request



Screw is used in the detail.  
Fire and moisture resistant production is made upon request.

## WALL TYPE PANEL



Product Code: TWLST



Allen and bow are used in its detail.



20x20 cm – 60x60 cm in the range.  
Custom sizes are available upon request



Suitable for vertical floors.  
Fire and moisture resistant production can be made.

## ECONOMIC PANEL



Product Code: TECO



Manual System



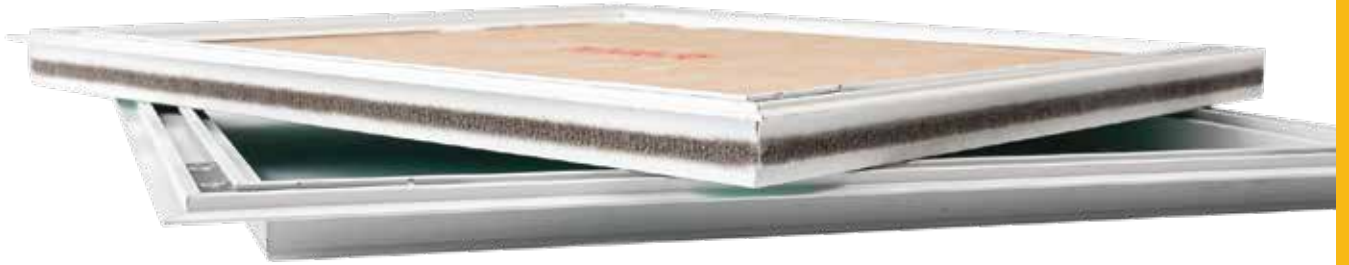
20x20 cm – 60x60 cm in the range.  
Custom sizes are available upon request.



It is the most economical and most practical product of its class.  
Switch and hinge are not used.



## ECONOMIC CORDED ACCESS PANEL



Product Code: TECOF



### Manual System

It is the most economical and most practical product of its class.  
Fire and moisture resistant production is made upon request.



20x20 cm – 60x60 cm in the range.  
Custom sizes are available upon request.



The hair wick between the inner panel and the outer frame insulates light  
and dust and provides an aesthetic appearance to the panel.

## ZERO CONSTRUCTION ACCESS PANEL



Product Code: TZR



Touch - Open System  
Safety harness  
Optionally, multi-opening (2-5) system can be produced in certain sizes.



20x20 cm - 60x60 cm in the range.  
Custom sizes are available upon request.



Thanks to the circular details in its frame, it helps to provide plaster strength during application.  
It provides a similar appearance with applied floor.

## EXTERNAL FRAME ACCESS PANEL



Product Code: TPRO



Touch - Open System

Safety harness

Optionally, multi-opening (2-5) system can be produced in certain sizes. 2 different production can be made as internal frame and external frame.



20x20 cm - 60x60 cm in the range.

Custom sizes are available upon request.



The areas where the framed product will be applied are pre-assembled ceiling profiles. The 2.5 cm frame around the panel will make your work easier and provide a decorative appearance without the need for extra processing (paint, plaster, etc.).

## METAL ACCESS PANEL



Product Code: TSTM



Touch - Open System

Safety harness

Optionally, multi-opening (2-5) system can be produced in certain sizes. Two types of production are made as aluminum and composite panels.



20x20 cm - 60x60 cm in the range.

Custom sizes are available upon request.



The metal access panel, which stands out in decorative use in recent years, is produced in different colors.



## LOUVERED VENT PANEL



Product Code: NPM-1



### Key system

Its frame is fixed and it has curvilinear fixed wings on its inner panel.  
Polypropylene has high heat resistance.  
Electrostatic powder painted.  
Produced by extrusion method.



20x20 cm – 60x60 cm in the range.  
Custom sizes are available upon request.



In humid environments; The vent panels, which are frequently preferred in order to ensure that heating systems such as natural gas stoves, combi boilers and water heaters do not consume the oxygen in the environment and provide free air circulation, provide an aesthetic appearance as well as being environmentally friendly.

## LINEAR VENT PANEL



Product Code: NPM-2



### Key system

Its frame is fixed and it has curvilinear fixed wings on its inner panel.  
Polypropylene has high heat resistance.  
Electrostatic powder painted.  
Produced by extrusion method.



20x20 cm – 60x60 cm in the range.  
Custom sizes are available upon request.



In humid environments; The vent panels, which are frequently preferred in order to ensure that heating systems such as natural gas stoves, combi boilers and water heaters do not consume the oxygen in the environment and provide free air circulation, provide an aesthetic appearance as well as being environmentally friendly.

## LOUVERED AND MOVABLE VENT PANEL



Product Code: NPM-3



### Magnet system

Its frame is fixed and it has curvilinear moving wings on its inner panel.

Polypropylene has high heat resistance.

Electrostatic powder painted.

Produced by extrusion method.



20x20 cm – 60x60 cm in the range.

Custom sizes are available upon request.



In humid environments; The vent panels, which are frequently preferred in order to ensure that heating systems such as natural gas stoves, combi boilers and water heaters do not consume the oxygen in the environment and provide free air circulation, provide an aesthetic appearance as well as being environmentally friendly.

## VECTORIAL VENT PANEL



Product Code: NPM-4



Polypropylene has high heat resistance.  
Electrostatic powder painted.  
Produced by extrusion method.



20x20 cm – 60x60 cm in the range.  
Custom sizes are available upon request.



In humid environments; The vent panels, which are frequently preferred in order to ensure that heating systems such as natural gas stoves, combi boilers and water heaters do not consume the oxygen in the environment and provide free air circulation, provide an aesthetic appearance with their vectorial design as well as being environmentally friendly.



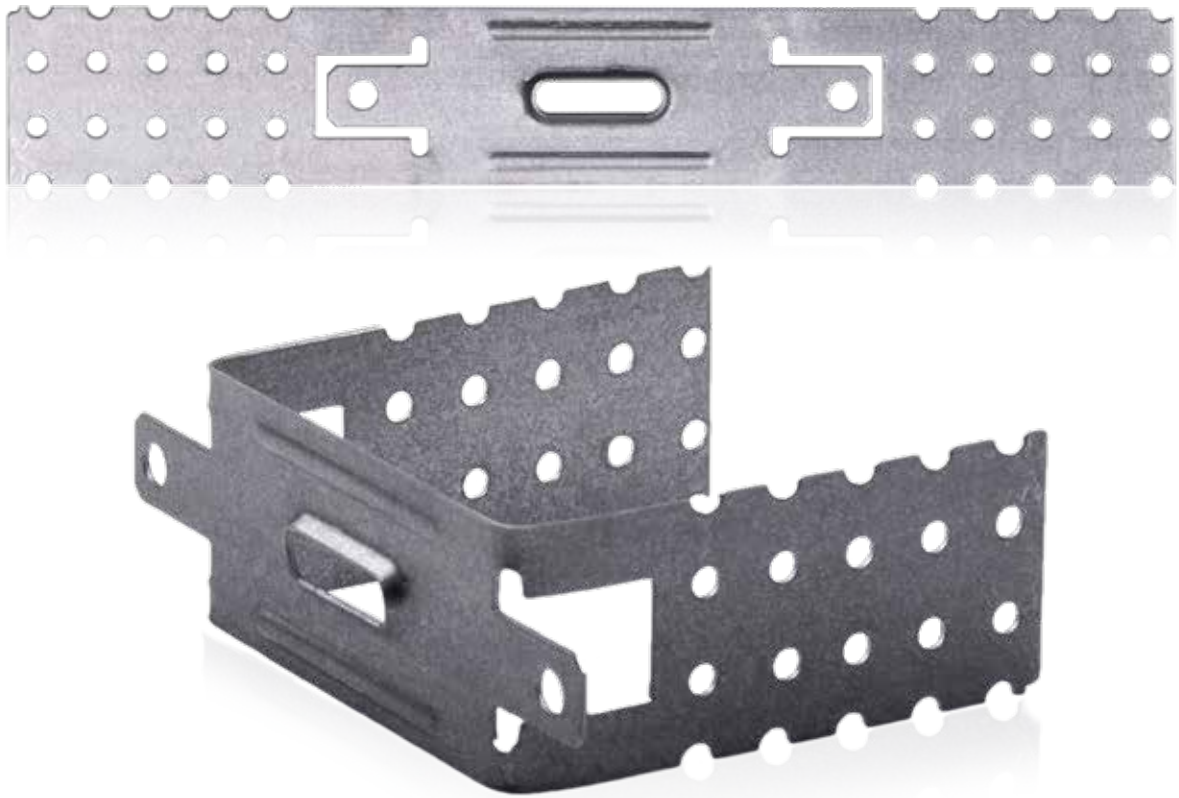


**ACCESSORIES**



Discover  
The Combining

## BRACKETS



Product Code: AC.BR



0,80 mm Galvanized



7-12-15-20-30-40



Used in place of suspension rod and channel hanger when there is a small distance between the existing ceiling in suspended ceiling construction.  
Also used to fix and support the gypsum panel.

## CONNECTORS



Product Code: AC.CON



0,50 mm Galvanized



Height : 2,5 cm Width : 6 cm Length : 8,5 cm



Connectors are used to attach the ceiling C profiles together.



## CLIPS



Product Code: AC.CLP



0,60 mm - 0,70 mm Galvanized



Clips are passed through the second profile and then crimped on the main profiles.  
Thus the ceiling C studs are connected to each other.

## CHANNEL HANGERS-1



Product Code: AC.CH



00,80 mm Galvanized  
Movable sheet in detail



Channel hangers are a strengthening element for carrying the suspended ceiling. Used with hanger stick. It helps to provide the height which we want to create between ceiling and suspended ceiling

## CHANNEL HANGERS-2



Product Code: AC.L.GCH



0,80 mm Galvanized



45 mm x 75mm



Channel hangers are a strengthening element for carrying the suspended ceiling. Used with hanger stick. It helps to provide the height which we want to create between ceiling and suspended ceiling.

## CHANNEL HANGERS-3



Product Code: AC.L.CH



0,50 mm Spring Steel  
There is moving sheet metal in its detail.



Channel hangers are a strengthening element for carrying the suspended ceiling. Used with hanger stick. It helps to provide the height which we want to create between ceiling and suspended ceiling.



## DOUBLE SPRING TONGS



Product Code: AC.CYM



0,50 mm Galvanized  
There is moving sheet metal in its detail.



Double Spring Tongs are a strengthening element for carrying the suspended ceiling. Used with hanger stick. It helps to provide the height which we want to create between ceiling and suspended ceiling.

## HANGER STICKS



Product Code: AC.HS



3 mm Galvanized  
Tensile Strength: N/mm<sup>2</sup> 350-1800



Hanger sticks are a strengthening element for carrying the suspended ceiling. It is used with channel hangers by passing through steel latches.

## CLIP-IN WIRE CLIP

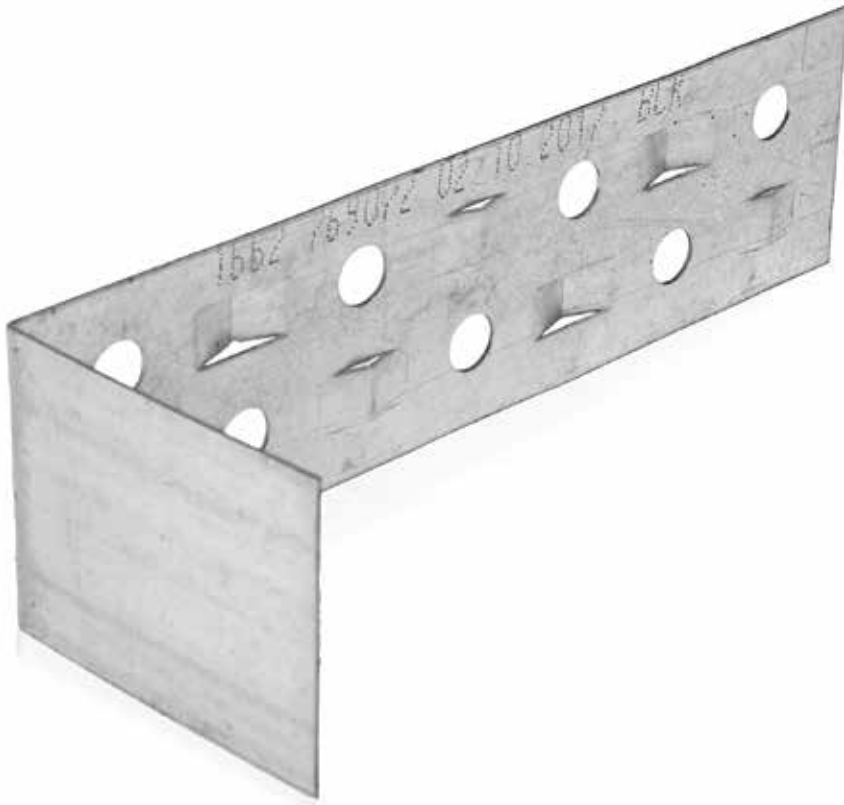


Product Code: AC.L.CLP



Used to fix the secondary and main carrier clip-in profiles to each other.

## WALL SUPPORT PLATE



Product Code: AC.WSLP



0,80 mm Galvanized



Height : 4 cm Width : 5 cm Length : 15 cm



Used in aerated concrete connections.  
Placed between the bricks at specified distances.  
The use of anchor plate is of great importance, and it prevents collapse and damage in case of a possible shake.



## SIDE PRESS WEDGE



Product Code: AC.L.WED



0,50 mm Galvanized



Press wedge, which is one of the clip-in mounting accessories, used to prevent metal ceiling mobility and to strengthen the structure by holding it with C side profiles.

## STEEL DOWEL



Product Code: AC.SD



Coating; Zinc and Janjan (Passivation)  
Tensile Strength; 150 kg



6x45 mm



It can be used on many surfaces such as concrete, brick, floor, panel, building materials, walls and gypsum board. It takes on the task of fixing the screw to the surface more firmly and the use of steel dowel is of great importance in the correct application.

## DOWEL-SCREW



Product Code: AC.PD.GS



Plastic and Galvanized



45 mm washer head screw  
8 mm plastic dowel



It is used to fix galvanized profiles to ceiling and wall in suspended ceiling and partition wall applications.  
Plastic dowel and washer head screw set.

## FITTINGS



Product Code: AC.L.CON



0,50 mm Galvanized



It may differ according to Omega carrier profile.



Used to add clip-in profiles to each other.

## JOINT TAPE



Product Code: TJ.TPE



Glass fiber



5 cm x 90 Meters



It is a self-adhesive tape used in partition wall, curtain wall and suspended ceiling systems applications, in plasterboard joint areas. It prevents cracks and allows the surface to work in one piece.



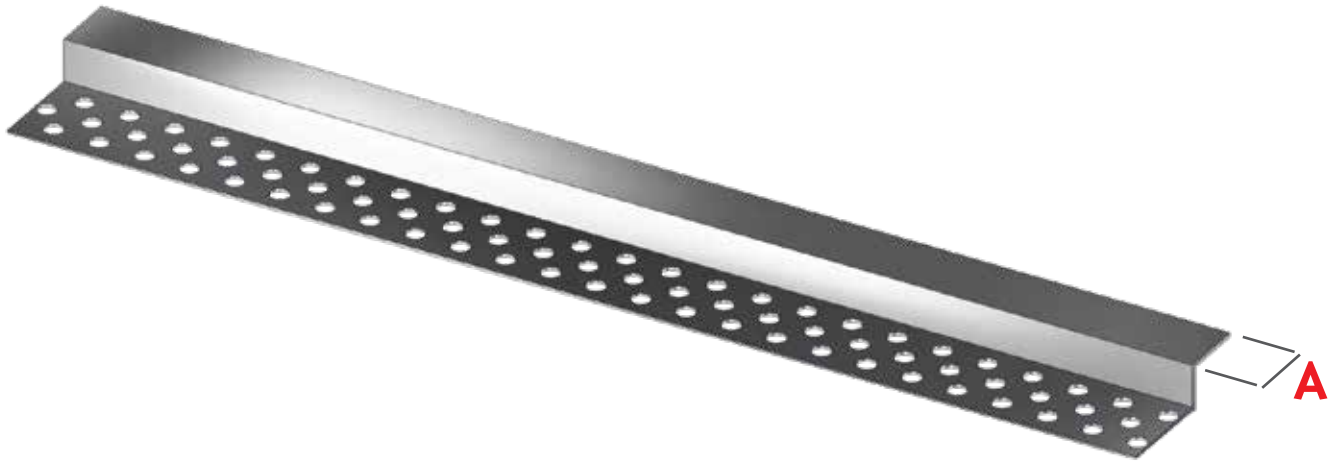


# FUGA PROFILES

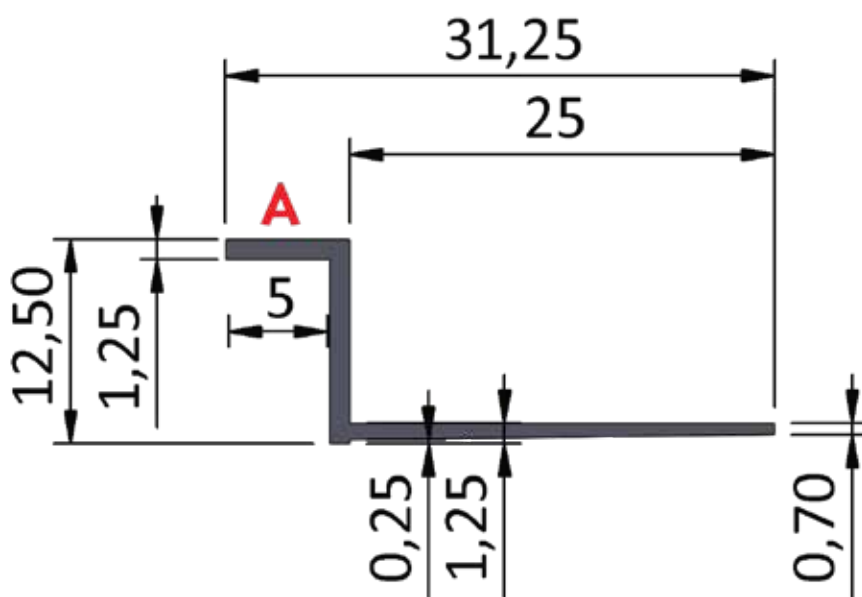


Discover  
The Connection

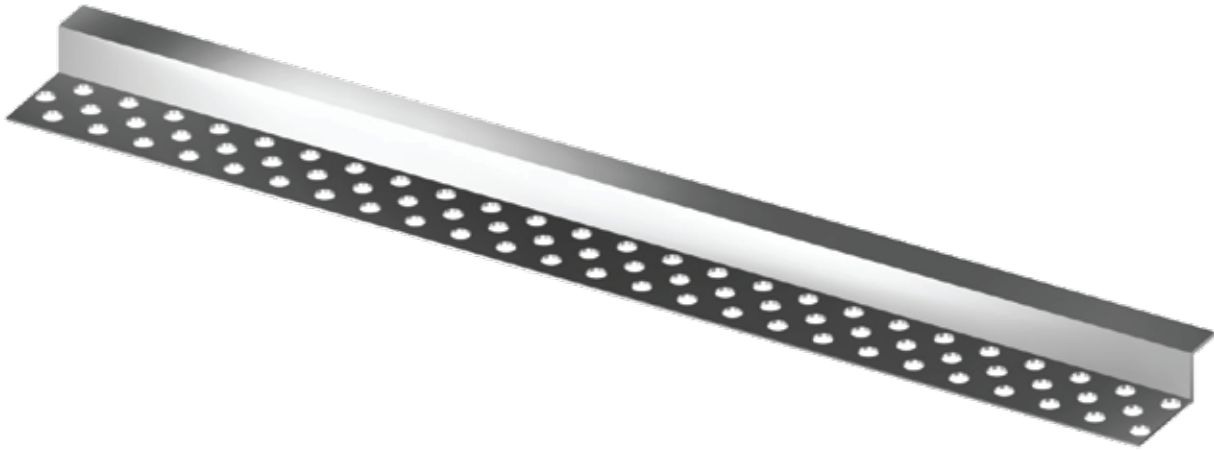
# FUGA PROFILE-1



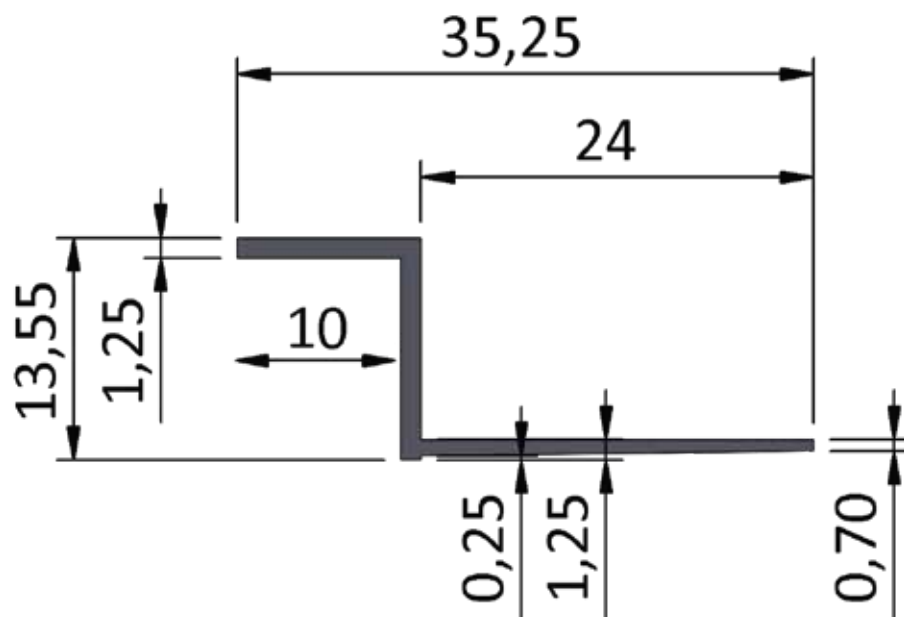
Product Code: FG3701



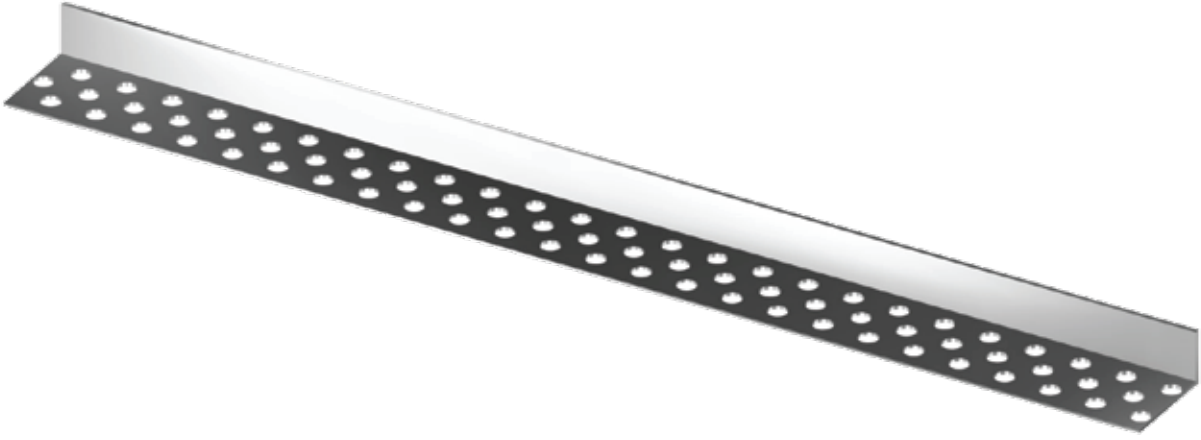
A	5	10	15	20	25
---	---	----	----	----	----



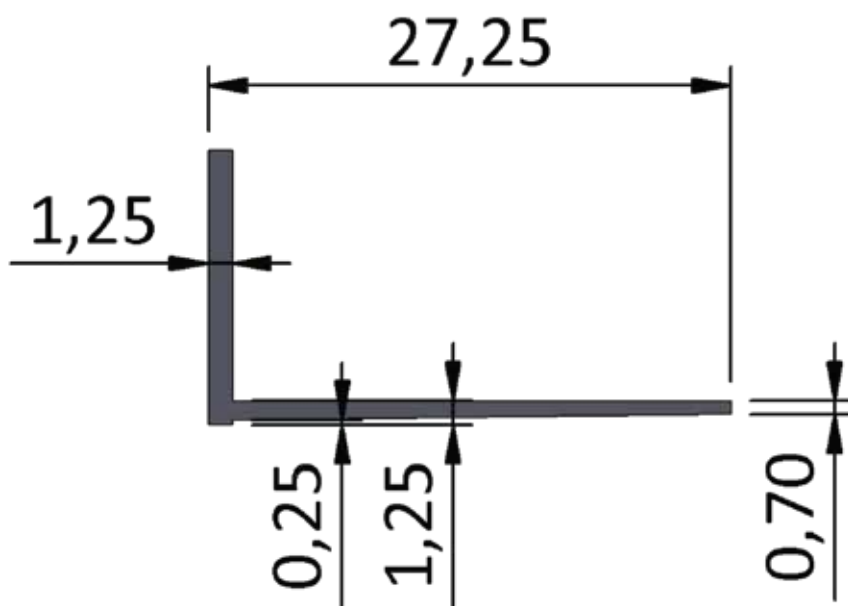
Product Code: FG3702



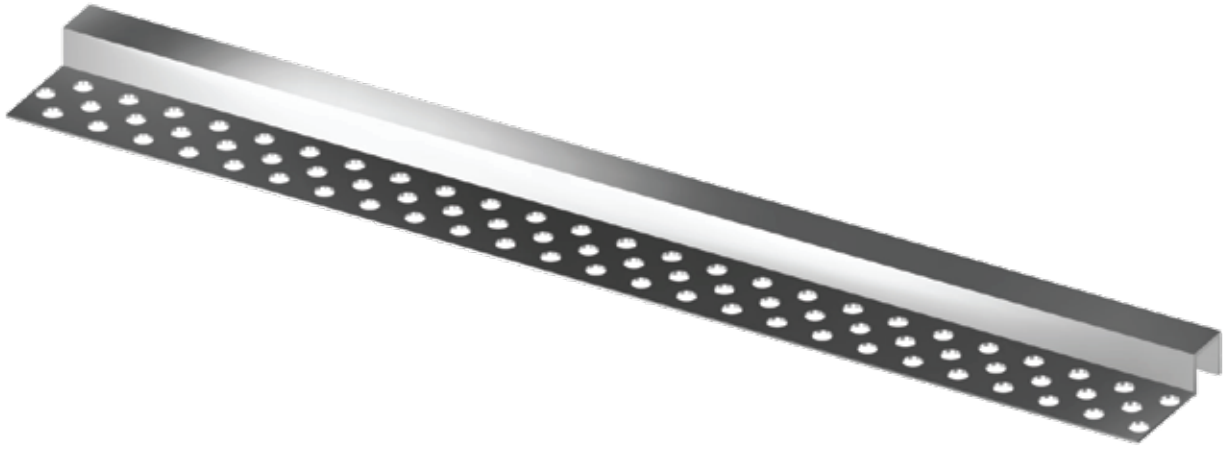




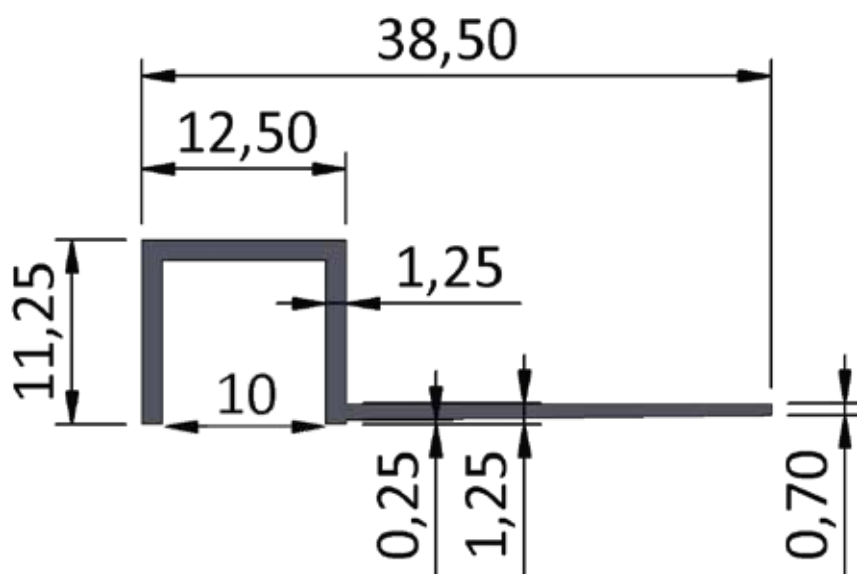
Product Code: FG3703







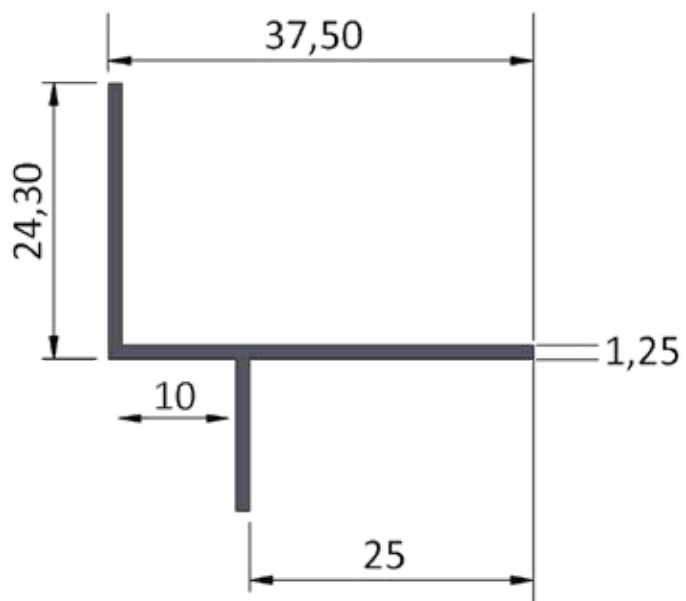
Product Code: FG3704



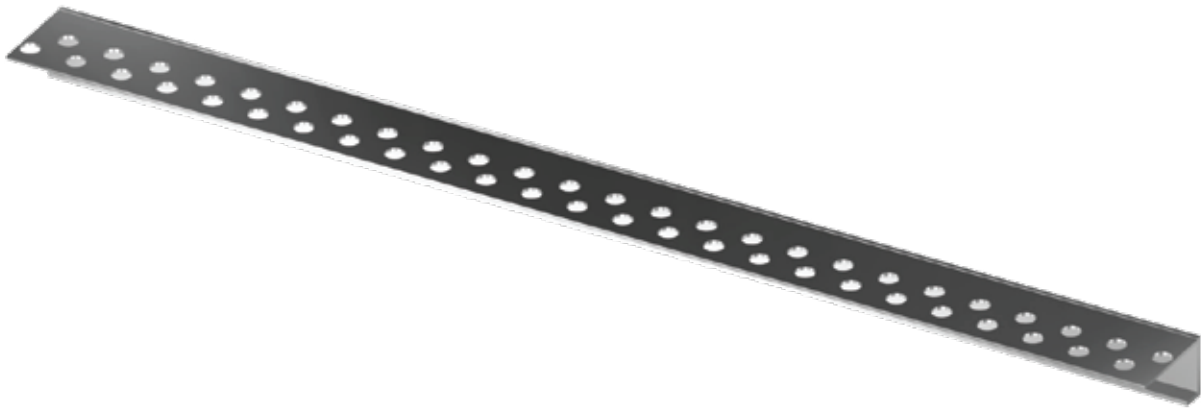
# FUGA PROFILE-5



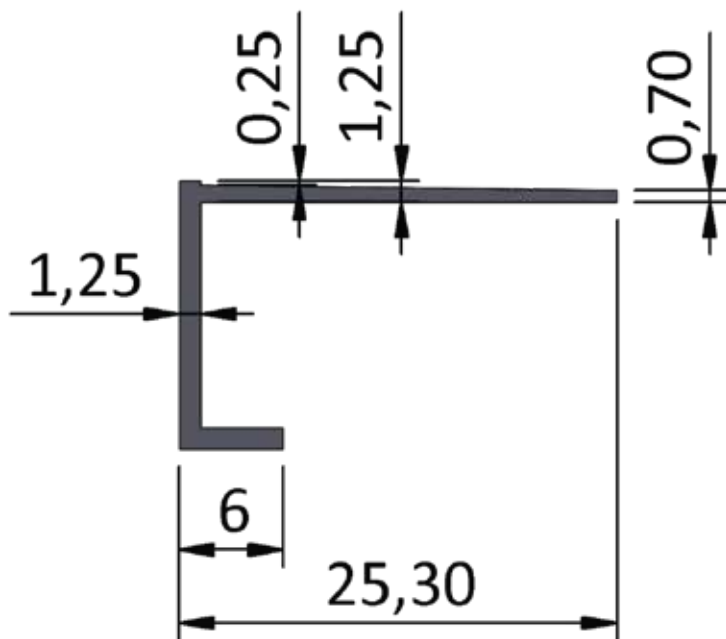
Product Code: FG3705



# FUGA PROFILE-6

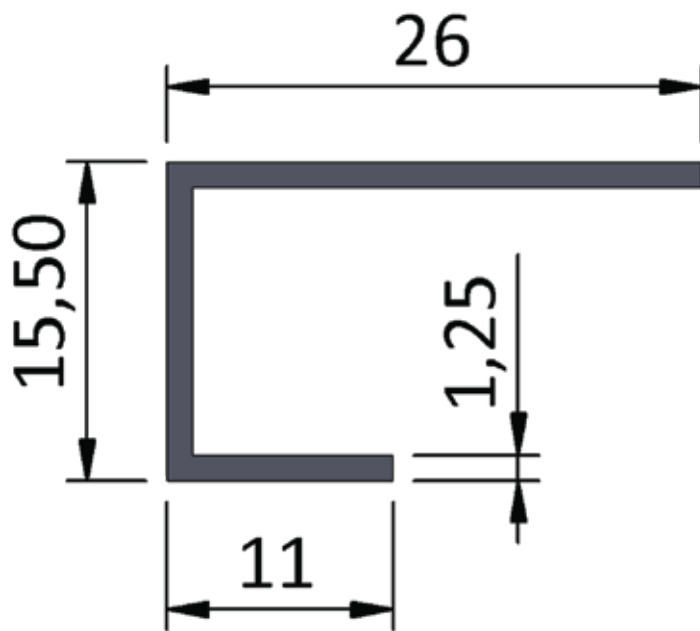


Product Code: FG3706



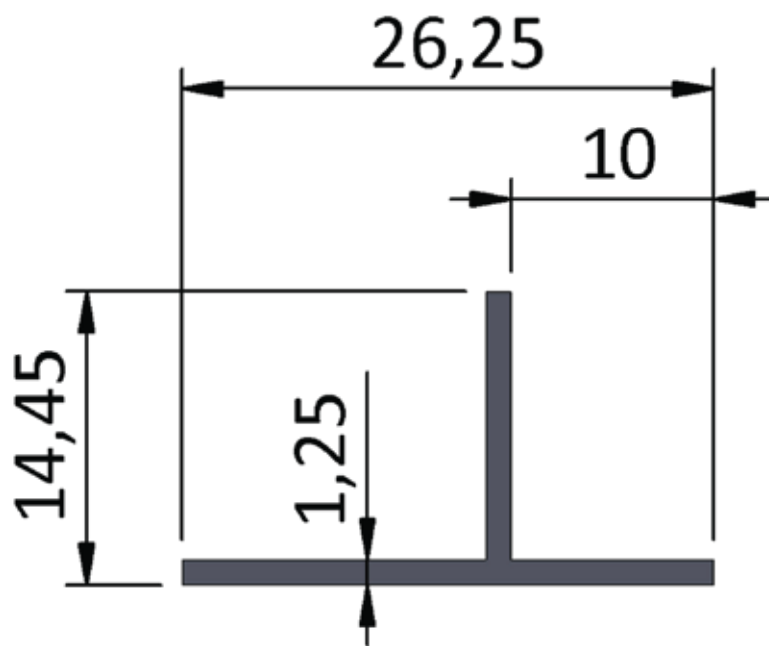


Product Code: FG3707





Product Code: FG3708





You might think  
it is the last product.

Discover More:

[www.strataboya.com](http://www.strataboya.com)

[www.tigerces.com](http://www.tigerces.com)



*Keep in Touch:*

If you need further information about our activities and products or have any inquiries, you can contact us.



Yulaflı Koyu Hacı Seremet Mevkii 4. Street  
No:21/A, Ergene-Tekirdag-TURKIYE



+90 530 010 90 21



sales@strataboya.com



www.strataboya.com



Cengeldere Neighborhood Cumhuriyet Street  
No:188/B, Beykoz - Istanbul - TURKIYE



+90 216 537 10 03



info@tigerces.com



www.tigerces.com

