



HD820-8 series



HD820-8

REGZM HYDRAULIC EXCAVATOR



<https://www.kato-works.co.jp> >



YouTube >



Instagram >



NOTE : Illustrations may include optional equipment. KATO products and specifications are subject to improvements and changes without notice. Mentioned figures are approximate. Bluetooth® is a registered trademark of Bluetooth SIG, Inc. However, trademarks of respective companies will be fully respected even if they are not specifically marked.

● Contact for enquiry:



KATO WORKS CO.,LTD.

9-37, Higashi-ohi 1-chome, Shinagawa-ku, Tokyo 140-0011, Japan.
Tel. : Head Office Tokyo(03)3458-1111
Overseas Marketing Department Tokyo(03)3458-1115
Fax. : Tokyo(03)3458-1163

*Piping for breakers and crushers is an optional feature.



Eco-Friendly Machine Evolves with Greater Strength

New engine to pass EU Stage V and EPA Final Tier4



Emission Gas Aftertreatment Unit (DOC+DPF+SCR) significantly reduces PM and NOx, making the exhaust gas cleaner.

Large Capacity DEF Tank

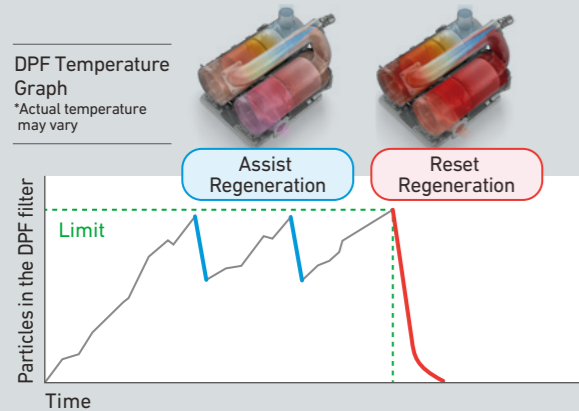
With a sizeable 55-liter tank capacity, you only need to refill the DEF once for every 2 fuel refills*. The tank is conveniently located in an easily accessible toolbox, making refilling operations easier.

*May vary depending on conditions.

Unique DPF Regeneration Controls

With the 3-step regeneration control, the DPF filter achieves reliable regeneration without interrupting work and fuel efficiency.

DPF Temperature Graph
*Actual temperature may vary



2-stage Turbo Charger

It meets demanding workloads while significantly reducing fuel consumption

Equipped with two large and small turbochargers, it utilizes turbocharging from low RPM ranges, enabling it to deliver enough torque.



90° General Digging Cycle Time
3% Improvement
(Compared to P mode HD820-7)

90° General Digging Fuel Consumption
2% Improvement
(Compared to P mode HD820-7)

Maintenance

- Easy access to replace parts
- Ensured safety during maintenance

Safety

- ROPS cabin
- Engine neutral start
- Surrounding view camera (option)

Operability

- Proportional lever (option)

Eco-Friendly

- EU Stage V and EPA Final Tier4
- Low idle fuel consumption

Comfortability

- Mechanical suspension seat
- Standard seat heater
- More equipment for more operability
- Pressurized cabin

Less Fuel Consumption when Idle

A unique circuit reduces the hydraulic pump flow rate when the machine is idle, and the control lever is placed in neutral. This reduces engine load and improves fuel efficiency.

High-performance Sound Absorption Materials and Airflow Achieves Ultra-low Noise Levels

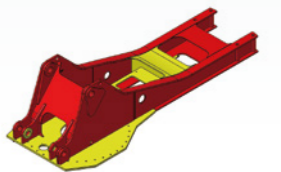
High Durability

Bucket Structure

Featuring a plate structure to prevent wear at welding points. The side plate thickness is increased to achieve high durability.

Slewing Table

New structure for the slewing table to ensure higher durability.



Parts in red: Optimized Shape

Digging Power

Max Arm Digging Power.....	109kN
High Power.....	115kN
Max Bucket Digging Power.....	150kN
High Power.....	159kN

Work Radius

Max Digging Radius.....	9,930mm
Max Digging Depth.....	6,700mm
Max Digging Height.....	9,830mm

*Optional Piping for breaker and crushers

REGZM BEST GENERATION EXCAVATOR

Layout for Easy Maintenance



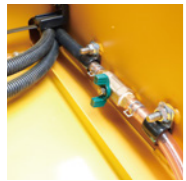
Cabin Maintenance Door
Easy to replace A/C filters and washer fluid.



Remote Grease Application
The slewing motor's grease application is done through a remote hole.



Battery Disconnection Switch
Able to switch off the standby electricity to allow for the safe maintenance of electrical equipment.



Fuel Tank Drain Hose
More accessible water drain for the fuel tank.



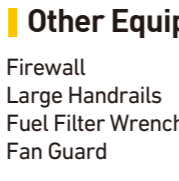
DEF Drain Guide
To prevent contamination inside the toolbox.



Pre-cleaner (Option)
Must-have option for highly dusty conditions.

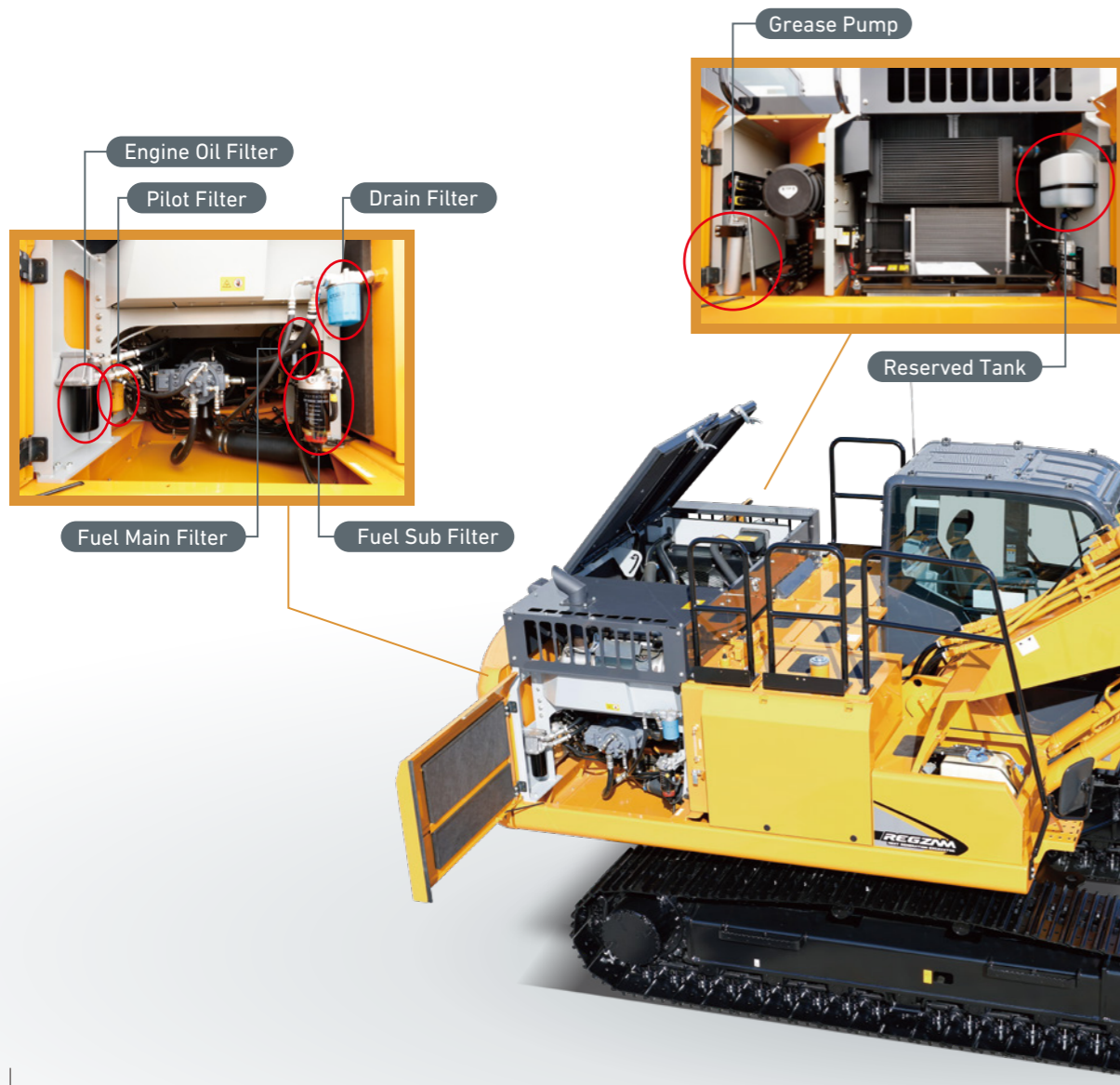


Hydraulic Level Gauge
It is placed in a highly visible position.



Other Equipment
Firewall
Large Handrails
Fuel Filter Wrench (Option)
Fan Guard

Foldable Side Mirror
LED Working Lights
(Right side of the boom, in front of the toolbox)
LED Working Lights Above the Cabin (Option)



REGZM BEST GENERATION EXCAVATOR

Equipment that Fits Your Needs

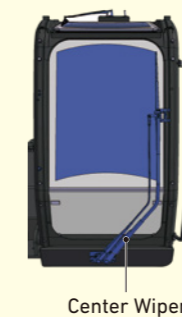


Standard Cabin
KATO achieves a robust yet sleek cabin design through its unique thick-walled irregular pipe and thick plate box structure. It complies with ROPS standards. Additionally, polycarbonate is standardly used for the door windows, further ensuring a safe operator environment.

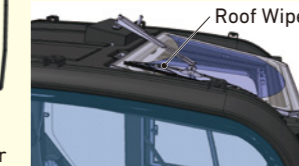


Demolition Cabin (Option)
A robust cabin is achieved with a cab guard and a dedicated thick-walled steel pipe frame for demolition. (Cabin guard rails have not obtained the CE certificate, nor do they have ISO10262 Level II certificate)

Center Wiper for 35% Increase in Range (Option)



The center wiper is equipped on the demolition cabin. Bringing the wiping range of the roof wiper and center wiper closer together reduces blind spots and ensures a wide field of vision.



Reinforced Bucket (Option)
The shape of the bottom reinforced plate has been changed to a horizontal plate design. This allows for replacing only worn-out sections, lowering running costs.

REGZMA Cabin Interior for Best Comfort



Openable See-Through Hatch (Option)

*Clear version also available



One-Touch Open Front Window



One-Touch Open Door Lock



LED Room Lamp



Seat Heater

Standardly equipped seat heaters and mechanical suspensions ensure comfortable work with reduced fatigue throughout the year.

New Operation Lever

Operation switches are arranged to up and bottom. Round shape grip is easy to handle.



Proportional Control Lever (Option)

It can operate attachments such as crushers and breakers in the Attachment Mode of APC using slide switches on the top of dedicated grips instead of pedals.



Heat&Cold Insulation Box

It is capable of storing 6 drink bottles (500mL).



Pressurized Cabin

It prevents dust by enhancing the airtightness.

Full Auto A/C

Comfortable airflow with paper filter equipped.

Rear Stowage Space

It is capable of storing objects such as 2L size drink bottle.



Other Cabin Equipment

- Mechanical Suspension Seat
- Seat Belt
- Emergency Hammer
- Emergency Stop
- Luggage Space
- Helmet Hook
- USB Power Port (Option)
- 12V Power Port (Option)
- Fire Extinguisher (Option)
- Sun Visor (Option)
- Rain Visor (Option)
- See-Through Hatch (Option)
- Air Suspension Seat (Option)
- AM/FM Stereo Radio (Option)
- Bluetooth, USB Radio (Option)



Luggage Space



USB Power Port (Option)

New Foot Rest Arrangement

The foot rest has been relocated to optimum position. Replacement of the floor mat has become easier.



Drink Holder

Soft material is used for the drink holder. Various arrangements are available.



REGZMA 7-inch Wide LCD Touch Display



Safety

Standard Rear View Camera

For better vision and safety



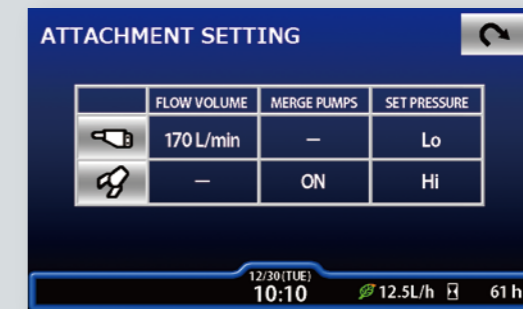
Dual Camera Display Available
(Optional Side-view Camera)

Operability Touch screen control is available for all operation.



Mode selection

Pull-down menu enables operator to confirm all mode on the display at once.



Attachment Settings

Flow and pressure for various attachments can be set on the touch display.

Rear 270° Surround View System (Option)

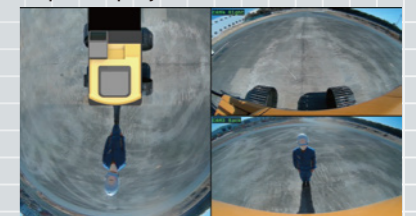
It's displayed in the middle of the APC for better safety. Dual display and triple display are also available.



Dual display



Triple display



Main Specifications

Model	HD820-8			HD820LC-8	
	Standard	Demolition	Heavy Digging	LC Standard	LC Demolition
Operating Mass	21,100kg	22,200kg		21,700kg	22,700kg
Bucket Volume	0.45m ³ ~ 1.1m ³ (Standard Bucket 0.8m ³)				

Engine

Model	Yanmar 4TN107 Diesel Engine			
Rated Output	120.7kW (164PS) / 2,000min ⁻¹			
Max Torque	788N·m (80.4kgf·m) / 1,500min ⁻¹			
Emission	EU Stage V / EPA Final Tier4			

Main Dimensions

Length (during transport)	9,680mm	9,690mm	9,680mm	9,690mm
Height (during transport)	3,090mm	3,140mm	3,090mm	3,140mm
Width	2,870mm		2,990mm	
Ground Clearance	*465mm			
Tail Swing Radius	2,910mm			
Track Length	4,170mm		4,460mm	
Track Width	600mm			

Travel and Swing

Travel Speed	5.9/3.9km/h			
Swing Speed	14min ⁻¹			
Gradeability	70%			
Ground Pressure	47kPa (0.48kgf/cm ²)	50kPa (0.51kgf/cm ²)	45kPa (0.46kgf/cm ²)	47kPa (0.48kgf/cm ²)

Digging Performance

Bucket Digging Force	150kN (15.3tonf) [159kN (16.2tonf) High Power]			
Arm Digging Force	109kN (11.1tonf) [115kN (11.7tonf) High Power]			

Hydraulics

Hydraulic Pump	Double Variable Volume Piston Pump + Gear Pump			
Swing Motor	Single Fixed Volume Piston Pump			
Travel Motor	Double Variable Volume Piston Pump			
Control Valve	5+4 Sections Multiple Control Valves (1 free service port included)			
Set Pressure	34.3MPa (350kgf/cm ²) [High Power: 36.3MPa (370kgf/cm ²)]			

Tanks

Oil Reservoir	275L (System)			
Fuel Tank	416L			
DEF Tank	55L (Replenishment 46L)			

*Grouser height not included

◎Standard equipments ●Option —No setting

Safety Equipment

	Standard	Demolition	Heavy Digging	LC Standard	LC Demolition
ISO 12117-2 ROPS Cabin (with ISO 10262 FOPS top guard LEVEL I)	◎	◎	◎	◎	◎
Safety Lock Lever	◎	◎	◎	◎	◎
Seat Belt	◎	◎	◎	◎	◎
Engine Emergency Stop	◎	◎	◎	◎	◎
Emergency Hammer	◎	◎	◎	◎	◎
Rear-view Mirror (right side)	◎	◎	◎	◎	◎
Rear-view Mirror (left side)	◎	◎	◎	◎	◎
Rear-view Camera	◎	◎	◎	◎	◎
Side-view Camera	●	●	●	●	●
Surround View System	●	●	●	●	●
LED Working Light (slewing table right side, boom left side)	◎	◎	◎	◎	◎
Additional LED Light (above cabin left side/above cabin on both sides)	●	●	●	●	●
Additional LED Light (boom right side)	●	●	●	●	●
Boom/Arm Anti-Drift Valves	◎	◎	◎	◎	◎
Slewing Anti-counter Action	◎	◎	◎	◎	◎
Automatic Parking Brake (swing)	◎	◎	◎	◎	◎
Automatic Parking Brake (travel)	◎	◎	◎	◎	◎
Firewalls	◎	◎	◎	◎	◎
Falling Prevention Handrail	◎	◎	◎	◎	◎
Battery Disconnect Switch	◎	◎	◎	◎	◎
Caution Indication Signs	◎	◎	◎	◎	◎
Cabin Lower Guard (grid)	●	●	●	●	●
Cabin Front Guard (vertical grid)	●	●	●	●	●
Cabin Front Guard (grid)	●	●	●	●	●
Cabin Head Guard (vertical grid)	●	●	●	●	●
Cabin Side Steps (folding)	●	●	●	●	●
Fire Extinguisher	●	●	●	●	●
Additional Electronic Horn	●	●	●	●	●
Travelling Alarm	●	●	●	●	●
Swing Alarm Lamp	●	●	●	●	●
Speaker (fixed mic/hand-held mic)	●	●	●	●	●

*Cabin front guard cannot be installed with rain visor at the same time

Cabin/Interior

6 Points Viscous Damping Cabin Suspension	◎	◎	◎	◎	◎
Front Window with Open Assist	◎	◎	◎	◎	◎
7 Inch Wide Touch Monitor	◎	◎	◎	◎	◎
Mechanical Suspension Seat	◎	◎	◎	◎	◎
Pressurized Auto A/C	◎	◎	◎	◎	◎
Defroster	◎	◎	◎	◎	◎
Large Capacity Warming & Cooling Insulation Box	◎	◎	◎	◎	◎
Intermittent Windshield Wiper	◎	◎	◎	◎	◎
LED Room Light	◎	◎	◎	◎	◎
Cup Holder (with object holder)	◎	◎	◎	◎	◎
24V Accessory Socket	◎	◎	◎	◎	◎
Crusher Cabin (with roof wiper)	●	●	—	●	●
See-through Hatch (with sunshade)	●	●	●	●	●
Sunshade	●	●	●	●	●
Sun Visor	●	●	●	●	●
Rain Visor	●	●	●	●	●
Air Suspension Seat	●	●	●	●	●
Proportional Lever	●	●	—	●	●
AM/FM Stereo Radio	●	●	●	●	●
Bluetooth, USB Radio	●	●	●	●	●
12V Accessory Socket	●	●	●	●	●
2 Port USB Socket	●	●	●	●	●
Seat Cover	●	●	●	●	●

*Rain visor cannot be installed with cabin front guard at the same time

System

APC Modes (A, P and E)	◎	◎	◎	◎	◎
Attachment Mode	◎	◎	◎	◎	◎
Auto-slow, One touch slow	◎	◎	◎	◎	◎
Automatic Travel Transmission	◎	◎	◎	◎	◎
2 Speed Modes for Travelling	◎	◎	◎	◎	◎

Piping/Others

	Standard	Demolition	Heavy Digging	LC Standard	LC Demolition
Attachment Service Port (1 section)	◎	◎	◎	◎	◎
High-performance Filter	◎	◎	◎	◎	◎
Additional Piping for Breaker/Crusher (manual switch)	●	●	—	●	●
Additional Piping for Breaker/Crusher (electrical switch)	●	◎	—	●	◎
Accumulator for Breaker	●	◎	—	●	◎
Boost Piping for Crusher	●	◎	—	●	◎
Additional Piping for Rotator	●	●	—	●	●
Lowering Control Device (Boom)	●	●	●	●	●
Lowering Control Device (Arm)	●	●	●	●	●
Multi Lever (4 positions)	●	●	●	●	●
Selector Lever (2 positions)	●	●	●	●	●
Air Cleaner Double Element	◎	◎	◎	◎	◎
Pre-Cleaner	●	●	●	●	●
Additional Counterweight (+500kg)	●	◎	◎	●	◎
Reinforced Under Cover for Slewing Table	●	◎	◎	●	◎
Fuel Pump	●	●	●	●	●
Specification for Cold Climates	●	●	●	●	●
Designated Color	●	●	●	●	●
Tools	◎	◎	◎	◎	◎

*Multi Lever and Selector Lever cannot be installed together.

Working Equipment

Bucket	0.45m ³ Bucket	●	●	●	●	●
	0.55m ³ Bucket	●	●	●	●	●
	0.8m ³ Bucket	◎	◎	◎	◎	◎
	0.9m ³ Bucket	●	●	●	●	●
	1.0m ³ Bucket	●	●	●	●	●
	1.1m ³ Bucket	●	●	●	●	●
	0.8m ³ Reinforced Bucket	●	●	◎	●	◎
	0.9m ³ Reinforced Bucket	●	●	●	●	●
	Skeleton Bucket	●	●	●	●	●
	Lifting Hook	●	●	●	●	●
Arm	Standard Arm (2.93m)	◎	◎	◎	◎	
	Long Arm (3.92m)	●	—	—	●	
	Various Arm Reinforcements	●	◎	◎	●	◎
Boom	Standard Boom (5.63m)	◎	—	—	◎	
	Reinforced Boom (5.63m)	●	◎	◎	●	
	Small Rotation Radius Bracket	●	●	—	●	●
Link	Standard Side Link	◎	—	—	◎	
	Reinforced Side Link	●	◎	◎	●	

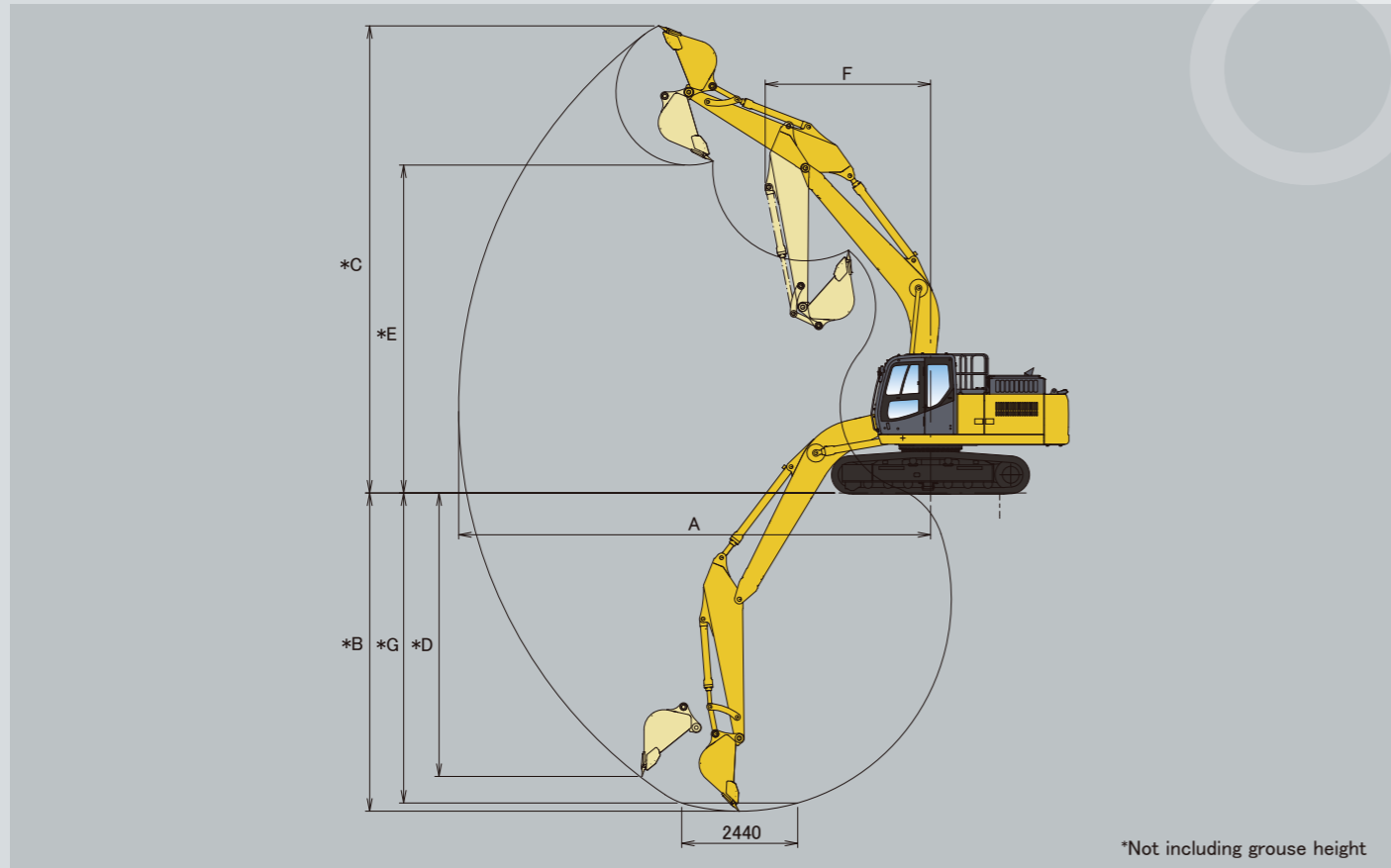
Arm Reinforcements A and B are:

A: Plate reinforcement, B: Plate and corner reinforcement.

Travel Equipment

Shoe	600mm Triple Grouser	◎	◎	◎	◎	◎
	700mm Triple Grouser	●	●	—	●	●
	800mm Triple Grouser	●	●	—	●	●
	900mm Triple Grouser	—	—	—	●	●
	600mm Pad	●	●	●	●	●
Track Guard	800mm Pad	●	●	—	●	●
	1 pc on Each Side	◎	—	—	◎	—
Reinforced Travel Frame Cover	3 pc on Each Side	●	◎	◎	●	◎
	Travel Frame Cover	◎	◎	◎	◎	◎
Reinforced Travel Frame Cover	●	●	●	●	●	

REGZMA Working Ranges



	Standard Arm (2.93m)	Long Arm (3.92m)
A: Maximum Digging Radius	9,930	10,870
* B: Maximum Digging Depth	6,700 [6,690]	7,690 [7,680]
* C: Maximum Digging Height	9,830 [9,840]	10,400 [10,410]
* D: Maximum Vertical Wall	5,960 [5,950]	7,090 [7,080]
* E: Maximum Dump Height	6,900 [6,910]	7,430 [7,440]
F: Minimum Swing Radius	3,480	3,380
* G: Maximum Digging Depth at 2,440mm (8ft) floor length	6,520 [6,510]	7,550 [7,540]

Bucket

Type of Bucket	Bucket						Skeleton Bucket	
Bucket Capacity m ³ , ISO	0.45	0.55	0.8	0.9	1.0	1.1	—	
Bucket Width	Without Side Cutters, mm	670	780	1,020	1,150	1,270	1,350	1,400
	With Side Cutters, mm	785	895	1,135	1,265	1,385	—	—
Standard Boom +	Standard Arm (2.93m)	●	●	●	●	▲ [●]	□	○
	Long Arm (3.92m)	●	●	▲	× [▲]	×	×	×

●: General purpose (used with material weight 1,800kg/m³ or less) □: Loading only (used with material weight 1,100kg/m³ or less) [] is for HD820LC-8
 ▲: Light work (used with material weight 1,600kg/m³ or less) X: Unusable
 ■: Orange colored area means standard.

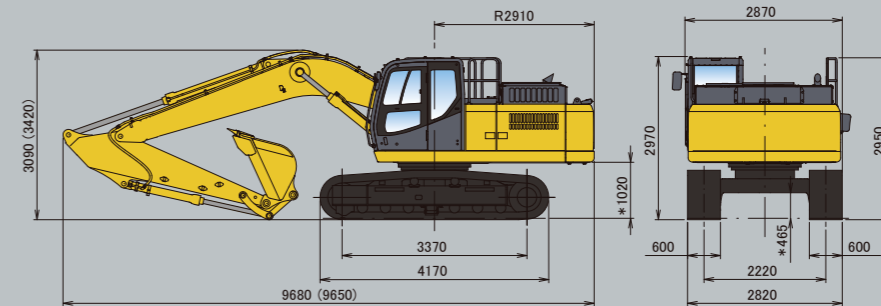
Track Shoes

	Triple Grouser Shoe			
Shoe Width (mm)	600	700	800	900
Distance between Both Ends (mm)	2,870 [2,990]	2,920 [3,090]	3,020 [3,190]	— [3,290]
Ground Pressure (kPa)	47 [45]	41 [39]	36 [35]	— [31]

Ground pressure is calculated with a 5.63m standard boom, 2.93m standard arm, and 0.8m³(ISO) bucket. [] is for HD820LC-8
 ■: Orange colored area means standard.

REGZMA Dimensions

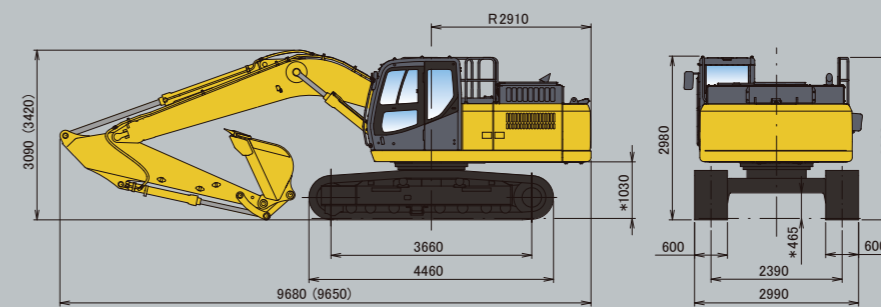
HD820-8



(Unit:mm)

() Long arm
 * Less grouser bar

HD820LC-8



(Unit:mm)

() Long arm
 * Less grouser bar

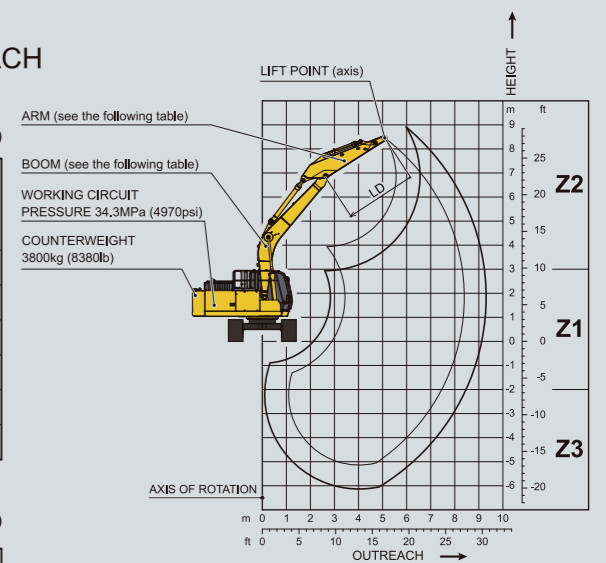
REGZMA Rated Object Handling Capacities Table

THESE LOADS ARE VALID FOR THE HEIGHT OF THE CONSIDERED ZONE (Z.) FOR THE INTENDED OUTREACH

HD820-8 STD LOWER

SHOE WIDTH:600mm (24")

BOOM length 5.63m(18'06")	ARM (LD)	OUTREACH IN m (ft in) - LOADS IN kg (lb)						MAX kg (lb)	MAX m (ft in)
		OUTREACH	1.5m (4'11")	3m (9'10")	4.5m (14'09")	6m (19'08")	7.5m (24'07")		
2.93m (9'07")	Z2	Z1	4790 (10560)	5320 (11730)	5920 (13050)	6440 (14270)	7000 (15520)	2710 (5970)	8.31 (27'03")
		Z3	7480 (16490)	11290 (24890)	5930 (13070)	3970 (8750)	2960 (6530)	2610 (5750)	8.39 (27'06")
		Z2			5780 (12740)	3370 (7430)	2960 (6530)	2360 (5200)	9.26 (30'05")
3.92m (12'10")	Z1	Z1	3120 (6880)	6820 (15040)	5760 (12700)	3830 (8440)	2820 (6220)	2150 (4740)	9.33 (30'07")
		Z3	6100 (13450)	10430 (22990)	5750 (12680)	3820 (8420)	2820 (6220)	2390 (5270)	8.50 (27'11")
		Z2			5780 (12740)	3370 (7430)	2960 (6530)	2360 (5200)	9.26 (30'05")



HD820LC-8 LC LOWER

SHOE WIDTH:600mm(24")

BOOM length 5.63m(18'06")	ARM (LD)	OUTREACH IN m (ft in) - LOADS IN kg (lb)						MAX kg (lb)	MAX m (ft in)
		OUTREACH	1.5m (4'11")	3m (9'10")	4.5m (14'09")	6m (19'08")	7.5m (24'07")		
2.93m (9'07")	Z2	Z1	4790 (10560)	5320 (11730)	6630 (14620)	4420 (9740)	3290 (7250)	3000 (6610)	8.31 (27'03")
		Z3	7480 (16490)	11910 (26260)	6640 (14640)	4420 (9740)	3290 (7250)	2890 (6370)	8.39 (27'06")
		Z2			5780 (12740)	3370 (7430)	2960 (6530)	2620 (5780)	9.26 (30'05")
3.92m (12'10")	Z1	Z1	3120 (6880)	6820 (15040)	6350 (14000)	4290 (9460)	3150 (6940)	2400 (5290)	9.33 (30'07")
		Z3	6100 (13450)	10430 (22990)	6460 (14240)	4270 (9410)	3150 (6940)	2670 (5890)	8.50 (27'11")
		Z2			5780 (12740)	3370 (7430)	2960 (6530)	2620 (5780)	9.26 (30'05")

WORKING CONDITIONS:

- with no tool (bucket, clamshell..).
- if object handling is performed with tool installed, the weight of the tool shall be deducted from the values of this table.
- with retracted bucket cylinder.
- on a compact horizontal level ground.
- in complete swing of the upperstructure.