



*Innovative Sheet Metal Forming Technologies*

[www.skpmakina.com.tr](http://www.skpmakina.com.tr)

# From 1998 to present...

## **SKP** Makina ve Kalıp,

Which started its operations in a small workshop in 1998 have strived to continue providing the best service to its clients while also continuing its development on a close field of 7,000 m<sup>2</sup> on 10,000 m<sup>2</sup> of land in Manisa Organized Industrial Site.

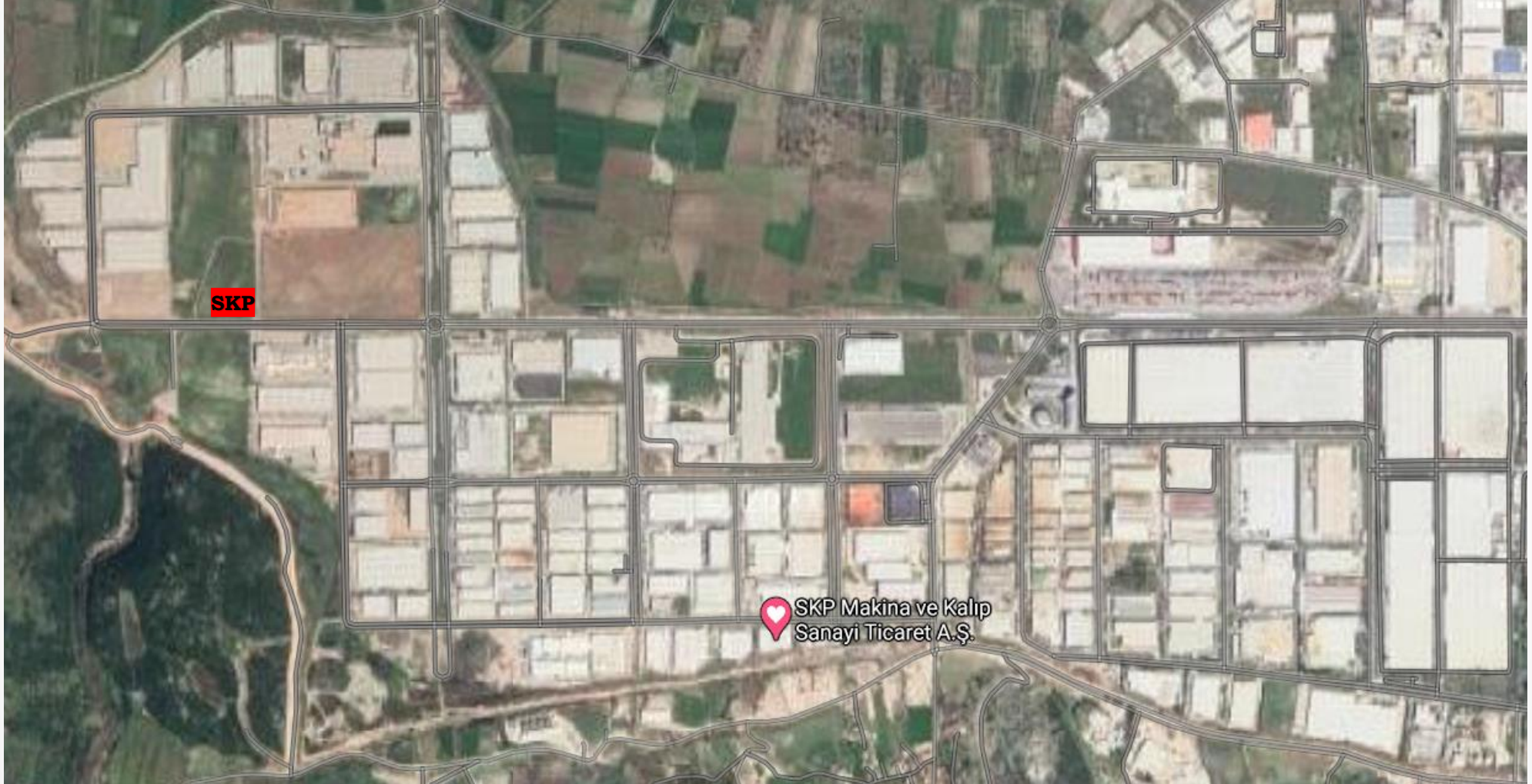


10.000 m<sup>2</sup> Area



7.000 m<sup>2</sup> Closed Area

# New Factory Investment (2020)

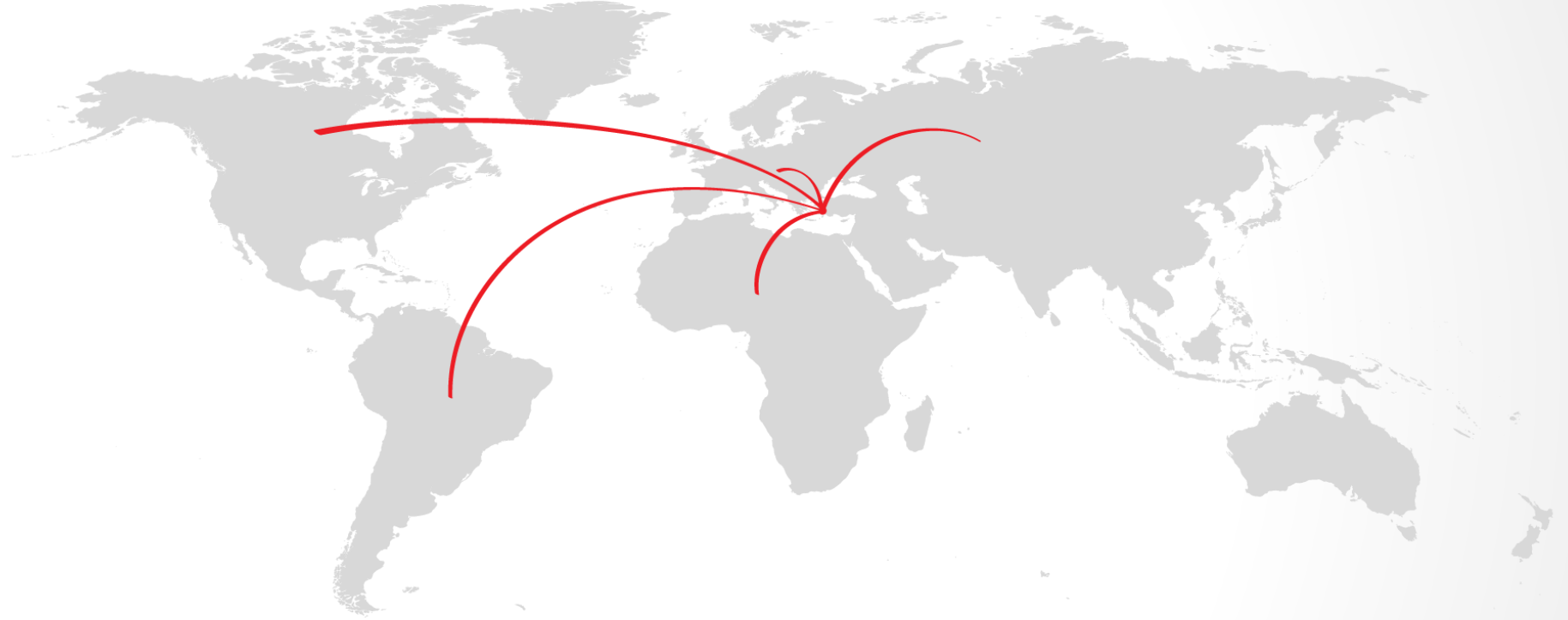


# SKP 2nd factory project to be completed in year 2023



## Our Vision

Parallel to the technological developments in 2028 focused on the added value products, having renewed itself with a proactive approach and having obtained the **ISO 500** certificate becoming an export company for customers on **5 continents** that aims for shared purposes.



## Our Mission

Cooperating for appropriate production in terms of forming and combining mould and sheet metal parts with metal by using the developing technologies for global automotive, heating-cooling and white goods companies.

Within this context, our aim is to satisfy all of our domestic and foreign customers as well as to contribute to the society and to our country's economy.





## Design Center

Turkey needs to make rapid progress in R&D, design, innovation and branding in order to achieve the highest level in technology. This only seems possible through the improvement of the quality of education and investment; and the development of R&D, Innovation, Design and Branding: the 4 components of High Added Value.

### Our purpose is;

- to ensure and encourage technological knowledge,
- innovation in the product and in the production processes,
- improvement of the quality and the standards of the product,
- commercialization of technological knowledge,
- and increase the employment of designers and qualified workers.



# Training Academy

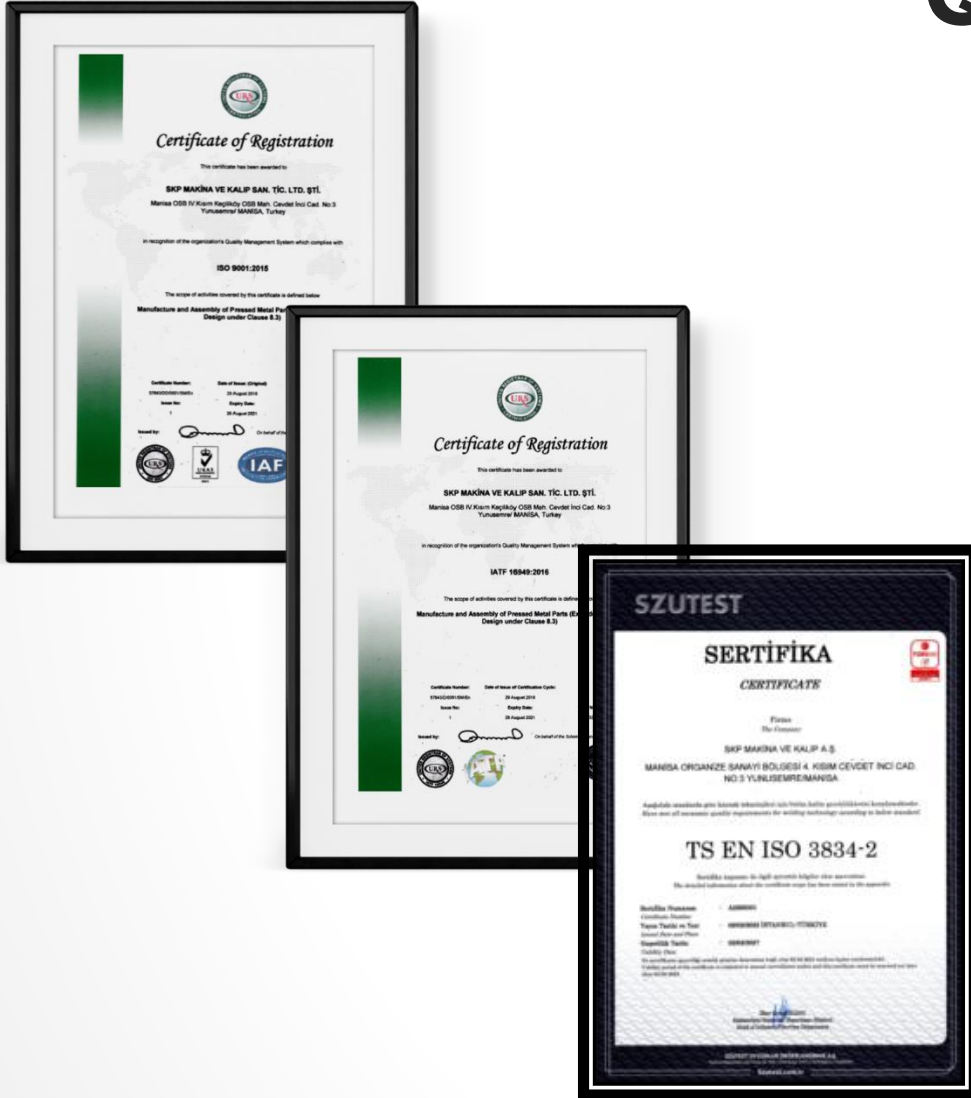
## Our purpose is;

- With the apprenticeship training system, to provide important contributions to our country which is in a rapid industrialization process, a quick, economic and active solution to the employment of qualified intermediate manpower,
- to contribute to increasing of the production quality and capacity through apprentices having received a theoretical training,
- to prevent apprentices from changing their workplaces randomly and to bring a working discipline to their carriers by signing a contract before the training,
- to enable industrial high school students to demonstrate their skills in a real business environments,
- On this path we have set out to be one of the leading companies of the sector with our products we export to 5 continents worldwide, our special production tools that shape the metal, and our dynamic employees; we are taking firm steps by turning our face to developments and leaning our back to our values, without compromising quality and by learning from our mistakes, while also considering the current needs and expectations of the sector.





# Quality



- ISO 9001 : 2000 Quality Management System Certificate received in 2003.
- ISO/TS 16949 : 2009 Quality Management System Certificate received in 2013.
- IATF 16949 : 2016 and ISO 9001 : 2015 are updated as of 2018.
- ISO 3834 based manufacturing Adequacy Management System, in 2021.
- Planned for 2023
- ISO 45001 safety management certificates
- ISO 14001 environmental management system

# Tool & Die Shop - Machine Equipments

Machine	Dimensions	Quantity
EDM – Wire	800 x 600 mm	1
EDM – Wire	600 x 400 mm	1
EDM	500 x 300 mm	1
EDM - Drilling	400 x 200 mm	1
CNC Double Column Machining Center	3150 x 2040 x 780 mm	1
CNC Vertical Machining Center	1600 x 800 x 750 mm	1
CNC Machining Center	1000 x 500 x 500 mm	1
Surface Grinding	1600 x 500 mm	1
Surface Grinding	600 x 400 mm	1
Lathing Machine	Ø500 x 1500 mm	1
Milling Machine (Universal- NC)	1200 x 400 mm	3
Hardness Tester		1
CMM (DEA) 3D Measurement Tool	2000 x 1000 x 700 mm	1
Crane (10t)		2
Crane (5t)		2



# Press - Machine Equipments



Machine	Quantity
Eccentric Press (300 - 800 t ) H type	7
Eccentric Press (60 - 150 t ) C type	11
Hydraulic Press (300 t ) H type	3
Hydraulic Press (100 - 250 t ) c type	3
Compact Roll feeder (max. 800 mm)	3
Roll feeder (max. 400 mm)	4
Transfer System	1

# Flexible Manufacturing Equipments

Makina	Ölçü	Adet
Laser Cutting Machine	800x600 mm	1
Fiber Laser Cutting Machine	600x400 mm	1
5D Laser Cutting Machine	2750 x 1250 mm	1
Panel Bender	3150 x 2040 x 780mm	3
Punch	500x300 mm	1
CNC Press Brake	400x200 mm	4
Spot Welding Machine (With Current Adjustable Unit)	1600 x 800 x 750 mm	7
TIG – MIG - MAG Welding Machine	1600 x 500 mm	9



(03/2024)

# 1 Piece 800 Tons Ales Press Investment



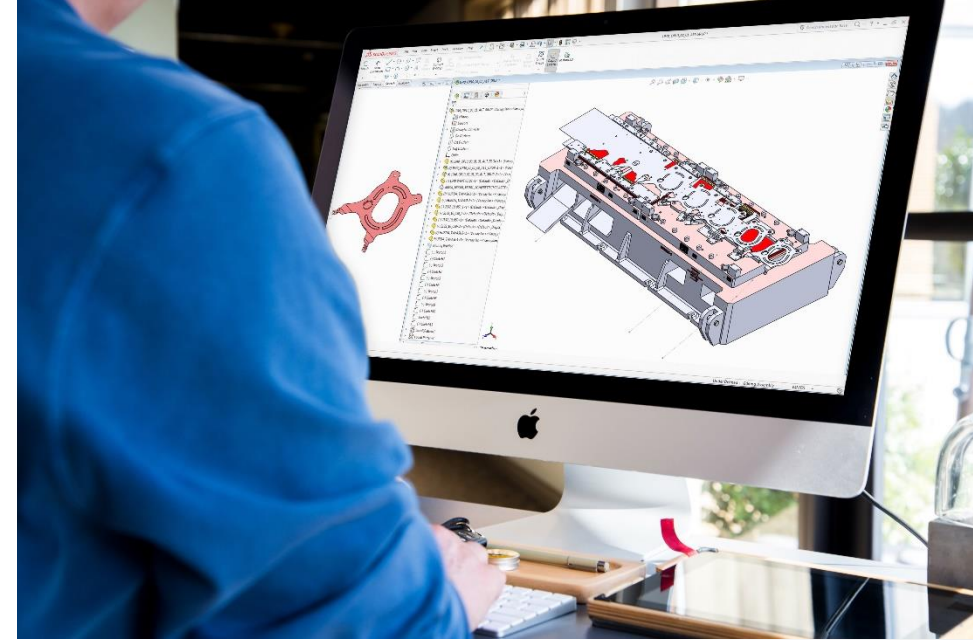
(01/2024)

# 1 Piece 300 ve 1 Piece 400 Tons Simpac Press Investment



# Design Office

In our experienced and well- equipped design office needed parts and patterns turn from abstract into concrete. We offer design solutions and make them real in order to offer you customized products.





## Fabrika 1

M.O.S.B IV. Kisim Keçilköyosb Mahallesi  
Cevdet İnci Caddesi No: 3 PK  
45030 Manisa – TÜRKİYE

## Fabrika 2

M.O.S.B IV. Kisim Keçilköyosb Mahallesi  
Yusuf SARİBEKİR Caddesi No:1  
45030 Manisa – TÜRKİYE



Tel : +90 236 213 03 05 (pbx)  
Fax: +90 236 213 12 07  
info@skpmakina.com.tr  
www.skpmakina.com.tr

