

ALUMINIUM GANGWAY WITH PLATFORM



Features

- Production according to ISO standart
- Sea water resist aluminium material
- Movable guard rails
- Rotatable platform
- Different size gangways available



PRESSURE VESSEL

Features

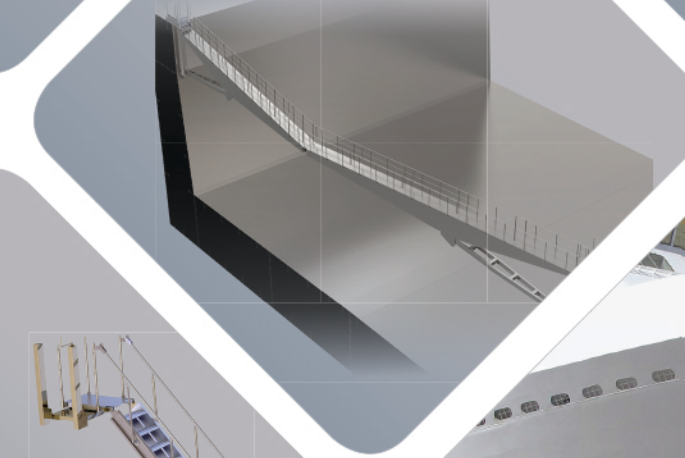
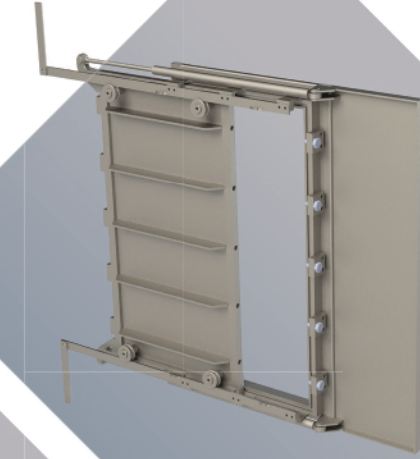
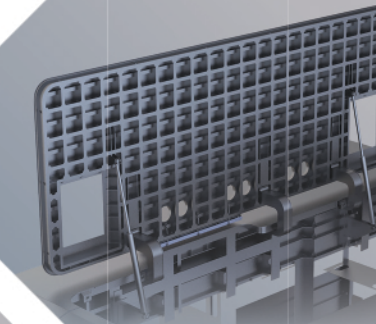
- up to 80 bar
- up to 3000 mm diameter and 20 meter height
- certificated by class association



www.yalintasarim.com.tr



DESIGNER AND MANUFACTURER



**YALIN TASARIM MÜHENDİSLİK
DANIŞMANLIK SAN. VE TİC. LTD. ŞTİ.**

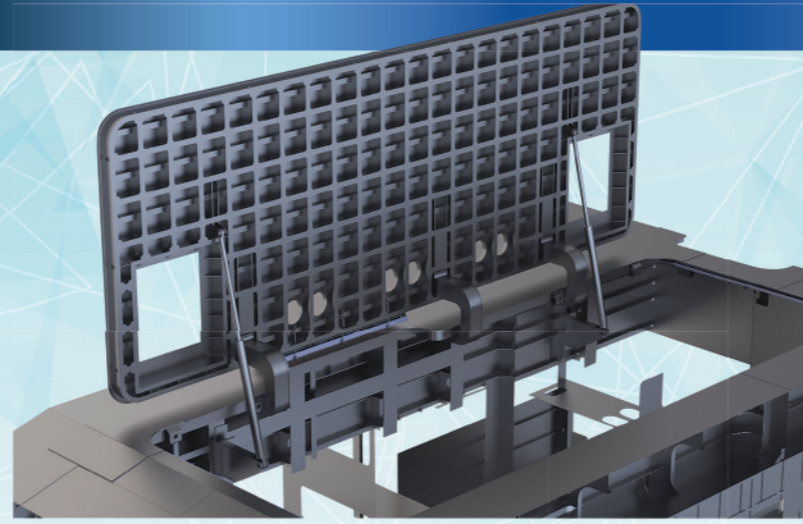
Sanayi Mah. Teknopark Bulvarı
No:1 3A Blok Kat: 1 No:310 Pendik-İSTANBUL
Tel: (0216) 685 12 19 Gsm: (0541) 464 62 21
www.yalintasarim.com.tr • info@yalintasarim.com.tr

DESIGNER AND MANUFACTURER

Yalın Design, founded in 2014, provides services to the ship and defense industry in various field. Design, simulation and production stages of standard and non-standard projects are carried out in the company. Some of those; side doors, stern ramps, bow ramps, aluminium gangways with swivel platforms, hatches, hinged watertight doors. The company carries out its some design and production process within its own structure. Apart from these, the company is carrying out a project work on hydarulic watertight sliding doors.



RECESS DOOR



Features

- Hydraulic operated and locked
- Height x width, 6 x 12 meter
- Aluminium structure

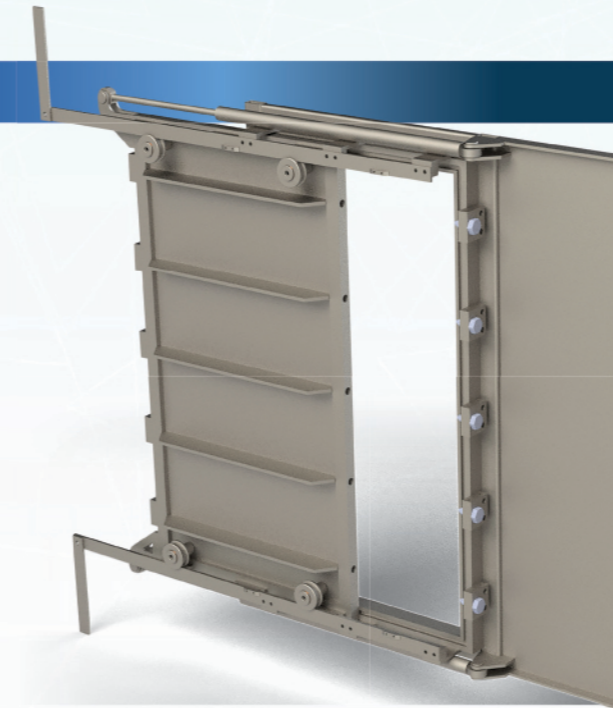
WATERTIGHT SLIDING DOOR

Drive and Control System Enabling

- Remote closing and monitoring from wheelhouse
- Local closing and opening
- Local closing and opening by hand pump with both sides of bulkhead
- Closing, opening, closing by accumulator energy
- Closing by hand pump installed over bulkhead deck

Features

- Compact design consisting of door, hydraulic control block, multi panel, emergency station
- Simple and easy maintenance
- Up to 1 bar (10 mSS) watertightness
- A0 fire resist according to FTP Code (Fire Test Procedure)
- Clear opening height x width 1600 x 800 mm, and up to 2400 x 1200 mm
- Door with low sill
- Interface vo VDR (Voyage Data Recorder) and VMS (Vessel Management System)
- Signaling screen panel



WATERTIGHT HINGED DOOR

Features

- Up to 0,86 bar (8,6 mSS) watertightness
- A0 to A60 fire resist according to FTP Code (Fire Test Procedure)
- Clear opening height x width up to 2200 x 1350 mm
- Quick acting operation
- Door with low sill
- Door with ramp
- Simple and easy maintenance



FLOATING DOCK TRANSFER BRIDGE

Features

- Allows people to pass from one side of the floating dock to the other.
- Operation with hydraulic driven rotary actuator or electric driven gear box
- Up to 40 meter floating deck width
- Removable guard rail
- 160 degree rotation
- Emergency hand pump

