



KUZU GRUP

More than 500 Significant Projects at 3 Continents in 78 Years



Completed Construction Projects

More than **15.500.000** m² Construction Area

More than **100.000** Residences





We are placed in the
"World's Top 250
International Contractors" list which is
prepared by Engineering News Record

Completed Domestic Projects



Real Estate Projects



- SeaPearl Ataköy
- JW Marriott Hotel İstanbul Marmara Sea
- SeaPearl Ataköy Hospital
- SeaPearl Ataköy West Phase
- Kuzu Effect
- Kuzu Effect Shopping Center
- Kumru Ankara
- Spradon Vadi Houses
- Spradon Quartz
- Spradon Terrace Houses
- Spradon Residence
- Spradon Towers
- Spradon Houses
- Divan Residence
- Divan Houses
- Park Vadi West Houses
- Park Vadi Houses
- Park Vadi Premium Houses

SeaPearl Ataköy / West Phase



At the seaside and the zenith of life

SeaPearl Ataköy and West Stage Project, which has an investment value of approximately 2 billion 100 million US Dolar, has a total land share of 112,700 m²

Investment Value: 2,1 Billion USD

Housing Units: 1401

Number of Floors: 20

Total Land Area: 112.700 m²

The fascinating part of the city

The first mixed project of famous architect Emre Arolat in Ankara, Kuzu Effect will make Ankara more impressive by offering four different living spaces, namely:

- Residence,
- Loft,
- Office,
- Shopping Center.

Investment Value: 500 Million TL

Total Construction Area: 190.000 m²

Residence Residential Tower Block: 46 floors

Office + Studio Block: 4 floors

Floor Shopping Mall: 3 floors

Loft Block: 17 floors

Kuzu Effect



JW Marriott Hotel Istanbul Marmara Sea



The new interpretation of luxury

Located on the seafront, the hotel also features a conference hall (1,510 m²), VIP Club (2,800 m²), VIP business center (244 m²), food & beverage area (1,500 m²), a seaside restaurant (500 m²), sports center (3,275 m²), gourmet market (900 m²), Turkish bath, fitness & spa center, outdoor/indoor swimming pools, and exclusive shops. World-renowned architect Khuan Chew is working on the internal design of the SeaPearl Ataköy Hotel.

Investment Value: 280 Million USD

Land Area: 14.900 m²

Construction Area: 86.000 m²

Residences: 62

Rooms: 204



Investment Value: 100 Milyon ABD Doları

Housing Units: 165

Total Land Area: 10.609 m²

Total Construction Area: 60.216 m²

Total Green Space: 3.200 m²

Total Number of Floors: 32 floors

Special life in the middle of the city

Kumru Ankara is the winner of the “Best Multi-Storey Housing-Completed Projects” award at the Sign of The City Awards, which is considered as the most prestigious real estate platform in Turkey.



Kumru Ankara



COMMITMENT PROJECTS

Domestic Commitment Projects

- Health Facility
- Housing Estate
- Shopping Centers and Public Buildings
- Educational Institutions
- Bridge
- Recreation Areas
- Sports Complexes

International Contract Projects

- Maskan Mehr - Pardis / Iran
- Maskan Mehr - Parand / Iran
- Reghaia / Algeria
- Blida / Algeria
- Khemis El Khechna / Algeria
- Annaba/ Algeria



Afyonkarahisar



Siirt

Health Facility

Contribution to Health Sector Across the Country



Antalya



Batman



Mardin



Afyonkarahisar



Hatay

Education Facilities

Contribution to Education Across the Country



İstanbul



Bursa



Hatay



Afyonkarahisar



Isparta



Bitlis



Ankara

Revenue Sharing



Branded Housing Projects across the Country



Housing Estate

Contribution to Public Housing Across the Country



Ankara



Afyonkarahisar



Eskişehir



İzmir



İstanbul



Kocaeli



Konya

Ongoing Construction Projects



Investment Value: 150 Million USD

Land Area: 3.760 m²

Construction Area: 35.507,77 m²

Rooms: 218

Hospital project that will strengthen to our country's health system

Which is the first hospital project of Kuzu Group, has 218 rooms and 31 departments in total, namely Endocrine, Hematology, Nephrology, Chest Diseases, Internal Medicine, Dermatology, Plastic Surgery, Medical Aesthetics, Dental, Pediatrics, Gynecology, Check-Up, Orthopedics, General Surgery, Chest Surgery, ENT, Ophthalmology, Neurology, Neurosurgery, Urology, Medical Oncology, Radiation Oncology, FTR, Cardiology, KVC, IVF Gastroenterology, Nuclear Medicine, Psychology, Psychiatry, and Radiology



Atakoy Private Hospital



Istanbul Fikirtepe Urban Transformation Project (1-2-3 Plot)

Investment Value: 1.593.160.000 TL

Housing Units: 2.015

Total Parcel Area: 35.046 m²

Total Construction Area: 407.129 m²

Total Commercial Unit: 48

**In the Developing Heart of Istanbul
Asian Side...**

Within the scope of Fikirtepe Urban Transformation Project, we contribute to Fikirtepe District, whose face has changed, with the construction of 609, 508 and 898 : 2.015 modern designed habitable houses in 3 stages.



Investment Value: 750.000.000 TL

Housing Units: 778

Total Parcel Area: 29.000 m²

Total Construction Area: 145.000 m²

Total Commercial Unit: 159

**In the Developing Heart of Istanbul
European Side...**

Within the scope of Okmeydanı Urban Transformation Project, we contribute to Okmeydanı District, whose face has changed, with the construction of 609, 508 and 898 : 2.015 modern designed habitable houses.



Okmeydanı Urban Transformation Project

Completed International Projects

Investment Value: 800 Million USD

Housing Units: 20.000

Block: 200

Number of floors : 16

Total Construction Area: 2.105.924 m²

Apartment Layouts: 2+1 - 3+1

The Maskan Mehr project in Iran is the world's largest single-contract social housing complex project.

Following the contract it signed with the Islamic Republic of Iran's Ministry of Roads and Urbanization in 2010, Kuzu Group completed the 20,000-housing unit project in 3 years and delivered it in 2013.



Maskan Mehr Project Parand

Maskan Mehr Project Pardis



Having produced 57,000 housing units in Iran, Kuzu Group takes on the construction of social areas and creates satellite cities.

In Pardis, Kuzu Group continues to build 37,000 housing units, 76 schools, 31 sports facilities, 17 mosques, 7 health centers, 7 cultural centers, 3 parks, shopping centers and recreational spaces on a total area of 3,953,449 m².

Investment Value: 1.8 Billion USD

Total Construction Area: 3.953.449 m²

Apartment Layouts: 2+1, 3+1

Number of Floors: 15

Block: 330

Total Housing Units: 37.000

Kuzu Group applies the tunnel formwork system in the projects involving the construction of 30,500 housing units.

Kuzu Group continues its operations in the Algerian cities of Reghaia, Blida, Khemis Al Khechna and Annaba. Construction of these development projects were commenced in 2014 with the contract signed with the National Housing Rehabilitation and Development Agency (AADL) affiliated with the Ministry of Housing, Urban Development and Urbanization of Algeria and continues at full speed.

Investment Value : 850 Million USD

Housing Units: 30.500

Total Construction Area: 1.674.000 m2

Reghaia Housing Units: 8.400

Khemis El Khechna Housing Units: 3.400

Blida Housing Units: 13.200

Annaba Housing Units: 5.500

Algeria Housing Projects



**COMPLETED
WASTEWATER
TREATMENT
PLANT CONSTRUCTION
PROJECTS**



Population Equivalent: 500.000

Capacity: 100.000 m³/day

Project Start Date: January 2007

Project Completion Date: August 2010

Paşaköy WWT Plant is Turkey's first wastewater recovery plant with the largest open sand filter and UV disinfection unit.

İSKİ Paşaköy Advanced Biological Wastewater Treatment Plant (2nd Phase)

İSKİ Tuzla Advanced Biological Wastewater Treatment Plant 2nd Phase

Tuzla Plant has the highest capacity (150,000 m³/h) of odor removal units with ozone in Turkey.

Population Equivalent: 500.000

Capacity: 100.000 m³/day

Project Start Date: January 2008

Project Completion Date: December 2010



İSKİ Düzce Advanced Biological Wastewater Treatment Plant



Kuzu Group completed the construction of İSKİ Düzce Advanced Biological Wastewater Treatment Plant, which has a treatment capacity of 50.000 m³/day, in a record time of just 120 days.

Population Equivalent: 250.000

Capacity: 50.000 m³/day

Project Start Date: August 2008

Project Completion Date: December 2008



Population Equivalent: 660.000

Capacity: 132.000 m³ / day

Project Start Date: October 2012

Project Completion Date: November 2014



Büyükçekmece Plant serves approximately 500,000 people.

İSKİ Büyükçekmece Advanced Biological Wastewater Treatment Plant



Population Equivalent: 350.000

Capacity: 73.000 m³ / day

Project Start Date: September 2013

Project Completion Date: December 2015

Silivri Advanced Biological Wastewater Treatment Plant

The wastewater coming from region is treated at Silivri Advanced Biological Wastewater Treatment Plant and it becomes dischargeable into the receiving body which is Marmara Sea.

İSKİ Çanta Advanced Biological Wastewater Treatment Plant

When Çanta WWTP was operated the discharging of untreated wastewater to Marmara Sea is come to an end.

Population Equivalent: 260.000

Capacity: 52.000 m³ / day

Project Completion Date: June 2013

Project Completion Date: December 2015



Population Equivalent: 1.400.000

Capacity: 210.000 m³ / day

Project Completion Date: July 2009

Project Completion Date: August 2011

The Hurma WWTP was financed by the World Bank, has the largest chemical scrubbing odor removal plant in Turkey.



ASAT Hurma Advanced Biological Wastewater Treatment Plant

BUSKİ Fluidized Bed Sludge Incineration and Energy Production Plant



BUSKİ Fluidized Bed Sludge Incineration and Energy Production Plant is the first plant of Turkey to produce 2,5 MW electricity by incinerate municipal sludge. The plant includes two parallel operating incinerators with each capacity is 200 tons of wet sludge per day.

Population Equivalent: 2.000

Capacity: 400 tons / day

Project Start Date: April 2017

Project Completion Date: April 2021



İLBANK

Ongoing Wastewater Treatment Plant Operation and Construction Projects



Wastewater Treatment Projects



Kuzu Group, which has been providing service to 20 Million people by treating 6 Million m³ /day wastewater, sorts 100 tons of solid waste and transports to solid waste storage area and transfers 600 tons of thermal dried wastewater sludge to cement factories in every day since 2003.



Baltalimanı Biological Wastewater Treatment Plant is the largest treatment plant which is located on the shore of the Bosphorus. The digestion tanks are located in the plant each of volume is 11.000 m³ has egg shape and these are the first egg shape constructed digester in the Middle East and the Balkans. The biogas to be produced from the waste sludge in these digesters will meet 50% of the electricity needs of the facility.

Population Equivalent: 6.480.000

Capacity: 1.296.000 m³ / day

Date of contract: September 2017



İSKİ Baltalimanı Biological Wastewater Treatment Plant





IsDB 
البنك الإسلامي للتنمية
Islamic Development Bank



Population Equivalent: 2.600.000

Capacity: 520.000 m³ / day

Project Start Date: March 2017

Project Ending Date: March 2022

Western Tehran Wastewater Treatment Plant

The treatment plant with a capacity of 520,000 m³ / day is financed by the Islamic Development Bank (IsDB). It is the largest wastewater treatment plant in Iran and it will serve for approximately 2,600,000 people. All of the treated waste water will be the highest effluent standard and suitable to use in agriculture.

The biogas to be produced from 8 number Sludge Digestion Tanks will meet 100% of electrical energy demand of the plant.



KFW



MONTENEGRO

Population Equivalent: 250.000

Capacity: 50.000 m³/day

Offer / Budget: 47 Million Euro

Estimated Completion Date: 2022

**Works for Construction of a
Wastewater Treatment Plant, Sewage
Sludge Treatment Plant and Sewage
Sludge Incineration Plant for the City
of Podgorica.**

Rehabilitation of WWTP Bekabad, Almalyk, Angren, Chirchik city and Extension of WWTP in Chinaz city.

UZBEKISTAN

Population Equivalent: 1.960.000

Capacity: 392.000 m³/day

Offer / Budget: 115 Million USD

Estimated Completion Date: 2022



ASIAN DEVELOPMENT BANK



Population Equivalent: 2.600.000

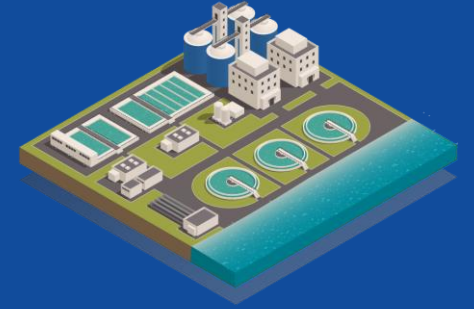
Capacity: 518.400 m³/day

Project Start Date: November 2019

Beirut/ Bourj Hammoud Wastewater Treatment Plant

The Bourj Hammoud Wastewater Treatment Plant is financed by European Investment Bank, the construction of the plant was undertaken by a Turkish company which is the first time in Beirut. The plant also is the first treatment plant in the Capital city.

Operations of **Istanbul**



Wastewater Treatment Plants Since **2003**

Bursa Wastewater and Drinking Water Treatment

Plant Operations Since **2012**



KUZU GRUP

İSKİ Ataköy Advanced Biological Wastewater Treatment Plant

The plant with a capacity of 400,000 m³/day serves 1,600,000 people and includes sludge thickening, sludge digestion, sludge dewatering, sludge drying, cogeneration and odor treatment units.



Population Equivalent: 1.600.000

Capacity: 400.000 m³/day

Project Start Date: January 2017

Project Ending Date: January 2022



Population Equivalent: 1.600.000

Capacity: 400.000 m³ / day

Project Start Date: July 2017

Project Ending Date: January 2022

The solid materials from Ambarlı Advanced Biological Wastewater Treatment Plant can be used as secondary fuel at industrial plants and energy demand of the plant can be provided by the cogeneration unit.



İSKİ Ambarlı Advanced Biological Wastewater Treatment Plant

Operation of BUSKİ Wastewater and Drinking Water Treatment Plants

Bursa Wastewater and Drinking Water Treatment Plants serve total population of approximately 3,200,000.

Population Equivalent: 3.200.000

Total Capacity: 640.000 m³/day

Project Start Date: May 2012

Project Ending Date: December 2021





Thank You ...