

**BVS<sup>®</sup>** **Bülbülođlu**  
**cranes** **Vinç San. ve Tic. A.Ş.**

---

# HOLDING COMPANIES



# BVS Cranes

History



# Index

## ➤ **Bülbüloğlu Holding Profile**

## ➤ **BVS Crane Industries**

### ➤ **History**

### ➤ **Mission & Vision**

### ➤ **Sectors**

### ➤ **Products**

#### ➤ **Standart Hoisting Groups**

#### ➤ **Travelling Cranes**

#### ➤ **Gantry Cranes**

#### ➤ **Jib Cranes**

#### ➤ **Process Cranes**

### ➤ **After Sales Services**

### ➤ **Quality Policy & Certification**

### ➤ **References & Products**

#### ➤ **Harbour Cranes (RMG, RTG, STS, Shiploader)**

#### ➤ **Crane Equipment**

#### ➤ **Special Manufacturing**

# HEAD OFFICE / ANKARA



# CORPORATE

---

BVS Cranes that as initiated its activities in 1985, Ankara and has become one of the leading companies of the sector in Turkish crane industry. BVS Cranes has 400 employees in 37.000 square meters indoor area.

The Head Office in Ankara and the regional sales offices are in İstanbul, İzmir, Germany / Duisburg, and USA.

We have also domestic and international dealerships, common after sale service network and the cooperation made with the world brands relating to sector. area, Ankara, Istanbul and Izmir sales offices, domestic and international dealerships, common after sale.



# BVS Cranes

Mission & Vision

# MISSION & VISION

---

## Mission

Our mission is to make hi-tech crane production with our continuous development approach, trained and experienced personnel and to maximize customer satisfaction with our after-sale service support.

## Vision

To maintain our leader position in our country in both standard products group and special-designed products in crane manufacturing sector.  
Promoting our brand in global markets, to become a world brand with our quality system, customer-focused approach, after-sale services and production policy at international standards.



# BVS Cranes

Sectors

# FIELD OF ACTIVITIES



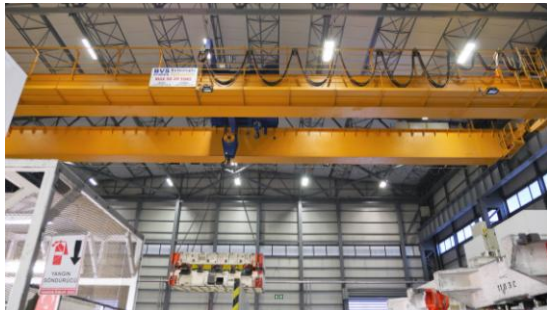
**IRON & STEEL**



**ENERGY**



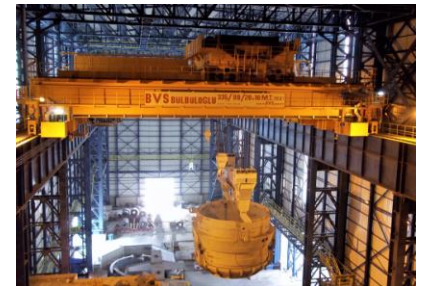
**SHIPYARDS & PORTS**



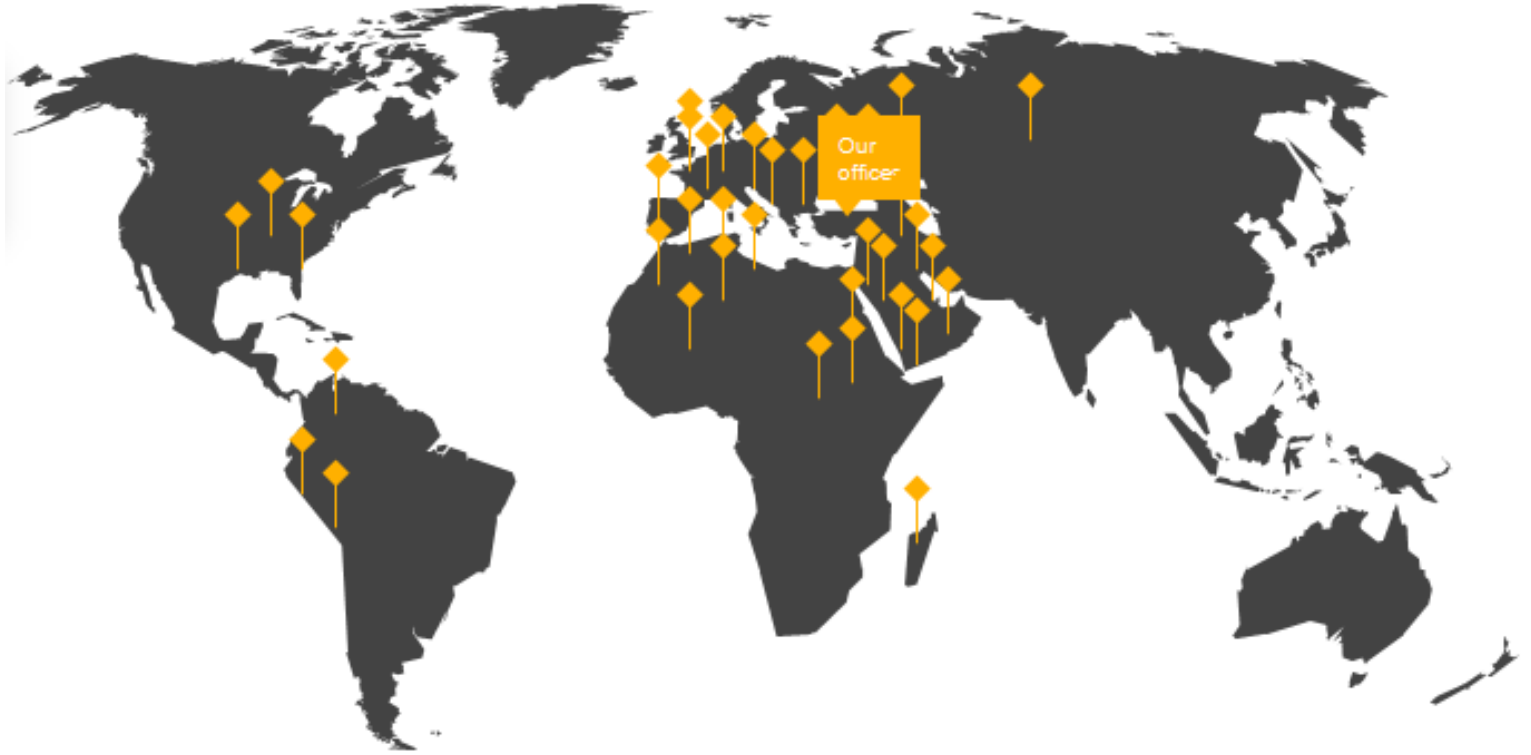
**AUTOMATIVE**



**INDUSTRIAL PRODUCTION**



**MINING**





# 82 Countries

more than 82 countries around the world

# BVS Cranes

Products: Standard Hoisting Groups



## Products: Standard Hoisting Groups



Bvs Cranes work with lifting groups in compact body having high technology at standard lifting groups. Lifting tonnage varies between 1 ton and 80 tons and there are lifting groups according to FEM standards.

At compact body lifting groups, it may carry load with accurate speed and high speed with double revolution motor.

Also BVS is the leading company in Turkey that is able to manufacture its own reducer and provides solution with open type lifting groups when special lifting speeds are asked in line with the customer requests.

Open type lifting groups having BVS reducer may be used for load carrying works at accurate speeds as double revolution motor or single revolution driving system.



## Products: Overhead Travelling Cranes



### Single Girder Overhead Travelling Cranes

Load capacity of our standard single girder travelling bridge cranes varies between 1 ton and 80 tons. For requests of lifting tonnage higher than 80 tons, we provide system solutions as a result of special engineering works and open type lifting groups.

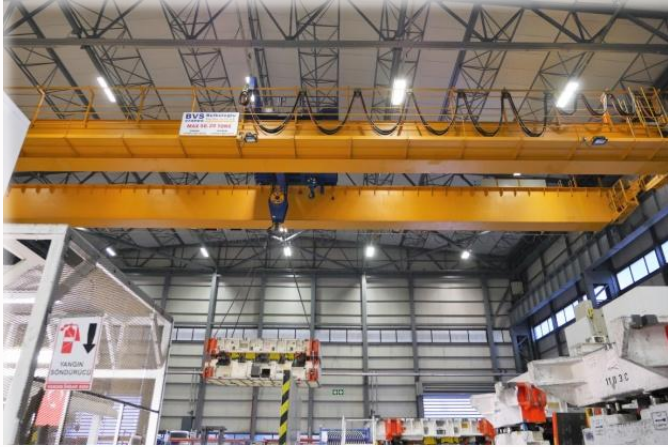


## Products: Overhead Travelling Cranes



Single girder travelling bridge cranes may be preferred as focused on economic solution at areas where bridge shaft distance is not long. As design, load carrying may be performed with single girder travelling bridge cranes where there is no sufficient area for crane to be operated between gusset and roof truss.





## Products: Overhead Travelling Cranes



### Double Girder Overhead Travelling Cranes

Load capacity of our standard double girder travelling bridge cranes is between 1 ton and 80 tons. In case of carrying more loads is necessary, we provide system solutions with open type lifting groups.

These cranes may be preferred at areas having long bridge shaft distance. There are various lifting groups available in our product portfolio according to loading capacity and FEM standards.

We provide most suitable solutions by specially designing our cranes in case the distance between gusset and roof truss is insufficient in a way to allow maximum loading height.



## Products: Gantry Cranes



These are cranes that are preferred for the load carrying applications at indoor or outdoor areas. Also these are systems where bridge girders are mounted on gantry footing and such gantry footing are mobile on travelling path fixed to ground with bridge carrying group.



# Products: Gantry Cranes



**Double girder and single girder travelling bridge gantry cranes provide advantage in uses for the purpose of load stowing and right/ left console for the purpose of use.**



## Products: Gantry Cranes



Field of use for travelling bridge gantry cranes are comprised of industrial manufacturing factories, workshops, hydroelectricity plants, dams, marble cutters, stock stowing depots, harbours etc. sectors



## Products: Jib Cranes

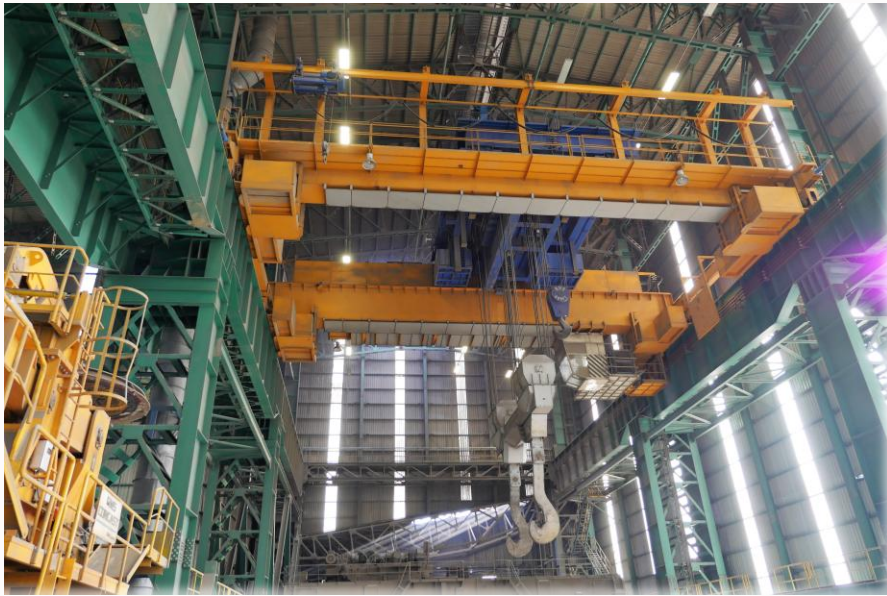


It carries the load to desired height by scanning the work zone in 360 degrees diameter because of being rotating type.

Jib cranes are divided into two types as construction as column jib cranes and suspended/wall type jib cranes.

Also jib cranes have the ability to perform both manual rotation and motorized rotation.

## Products: Process Cranes



These are FEM class, heavy duty type cranes that are manufactured as 600 tons and more for high capacity that may meet the requests of companies in energy sector or Iron-Steel sector, heavy industry.

Casting cranes, charge cranes, ingot cranes (with traverse, magnet, fixed or having rotating table), scrap cranes (with bucket, polyp or magnet) tundish cranes, of which manufacturing still continues at our production site or of which production is completed render services at large international establishments.

Products: Harbour Cranes  
(RMG, RTG, Shiploader)





**BVS** Bülbüloğlu  
cranes Vinç San. ve Tic. A.Ş.

**Dünyanın Heryerinde**  
**Dünyanın Yükünü Kaldırıyoruz**  
1500 T/H Kapasiteli  
**İlk Yerli Üretim Shiploader**





## Products: Harbour Cranes (RMG, RTG, Shiploader)



**Shiploader:** In 2017 BVS Cranes designed and manufactured a special Shiploader Project for loading soda ash for the ships.

By 1500 ton /per hour capacity it was the biggest capacity shiploader manufactured in Turkey.

## Products: Harbour Cranes (RMG, RTG, Shiploader)



**Mobile Shiploader:** BVS Cranes designed and manufactured 300 ton / per hour capacity mobile shiploader for working and operating together with the main shiploader.



All manufacturing, installation, tests and commissioning is made by BVS Cranes. And for this Project, all the conveyors and silos were manufactured by our steel construction company BCES.

# Products: Crane Equipment



**Bucket:** It is used for the purpose of carrying any kind of poured load.

**Polyp Bucket:** It is used for the purpose of carrying mineral Loads such as coal, stone or for the purpose of carrying scrap loads or for the purpose of deep screening.

**Magnet:** It is used for the carrying of metal products at steel processing industry.

**C-Hook:** It is used to prevent undesirable conditions such as overlapping, scattering, sliding or rolling over while carrying the load.

**Load Traverse:** It is used to carry the load as balanced.



# Products: Crane Equipment



**Load Gripping Apparatus:** It is used to carry the load as balanced by gripping the load from the edges.

**Operator Cabin:** This is a command system assisting accurate carrying of the load through operator panel and joystick system used for the purpose of easy vision of work site where the existence of crane operator at work site may not be beneficial.



**Electrical Room:** These are prefabricated structures, in which all electrical systems that are used at process cranes exist.

**Industrial Type Air Conditioner:** Operation of electrical materials are enabled to be performed without being affected by high temperature through industrial type air conditioning system to be used at electrical rooms or operator cabins that are available on the cranes and used at heavy duty industry such as iron-steel sector.

# Products: Crane Equipment



## Transfer Trolley:

These are the systems allowing easy carriage of the load on lateral plane.



## Grill Cleaning Machine:

This is used for the routine cleaning of grill used to retain impurities in front of the holes allowing water inlet.



## Fixed Puller Cranes:

These are the cranes that are used to transfer the load by pulling it during the carriage of the load on lateral axis or from inclined surface with diversion pulley according to location of the load to be carried

# Products: Crane Equipment



## Rotating/Horizontal Bridge Carrying Systems:

These are the systems that allow transportation of locomotives from one hallway to another in fast and safe manner between maintenance hallways during locomotive or car maintenance / repair process at railway transportation.



## System Solutions:

BVS provides system solutions with the capacity to meet all requests of our customers with customer focus. In line with the demands, requests of our customers are fulfilled with the most economic solutions from product scale such as single girder or double girder travelling bridge cranes, portal cranes, jib cranes or process cranes.



# BVS Cranes

After Sales Services

## After Sales Services



*Offering 24/7 technical support and service, BVS continues to be a solution partner to its customers.*

BVS Cranes has always stood behind its products in terms of service and quality.

As BVS, we have the experience, technical infrastructure and staff with the capacity to meet all your expectations, and provide a quality and secure service with our strong technical team.

We give you service as soon as possible with our teams centred in Ankara, Istanbul, Hatay, Izmir, Bursa, Kayseri, Germany and Saudi Arabia, as well as our authorized dealers.

We offer periodic maintenance, spare parts, consultancy and service to our cranes throughout Turkey and in **over 40 countries.**



# After Sales Services



BVS Cranes guarantees the provision of every part of all cranes it produces. Our After-Sale Service Department works intensely in order to present spare parts and good price to our customers. Our storage of spare parts is in our ANKARA factory.



## ***EFFICIENT STOCK MANAGEMENT***

Owing to the BVS Efficient Stock Management, maximum spare parts stock capacity is calculated and continuous supply is provided.

# BVS Cranes

Quality Policy & Certification



# BVS Cranes

References & Products

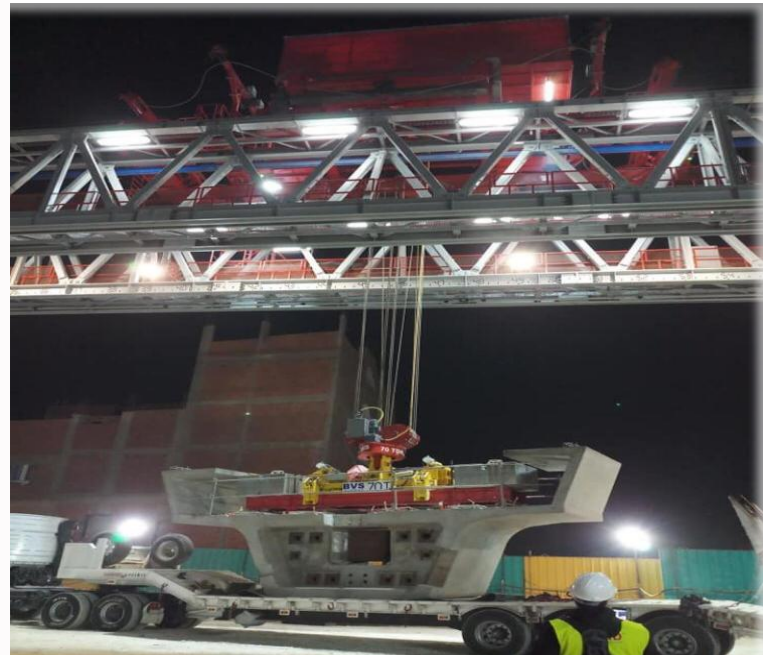
## İSTANBUL METRO LINES



## EGYPT - GREATOR CAIRO METRO LINE PHASE 3



# EGYPT - GREATOR CAIRO METRO LINE PHASE 3 LAUNCHING GIRDER

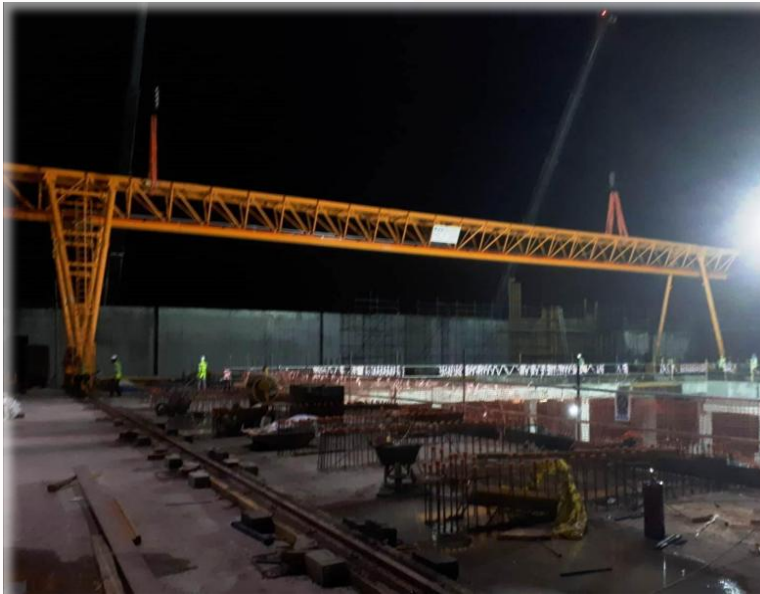


## MOSCOW METRO LINE





# KUWAIT INTERNATIONAL AIRPORT



UZBEKISTAN RAILWAYS  
65/10 TONS x 3045 MT  
GANTRY CRANE





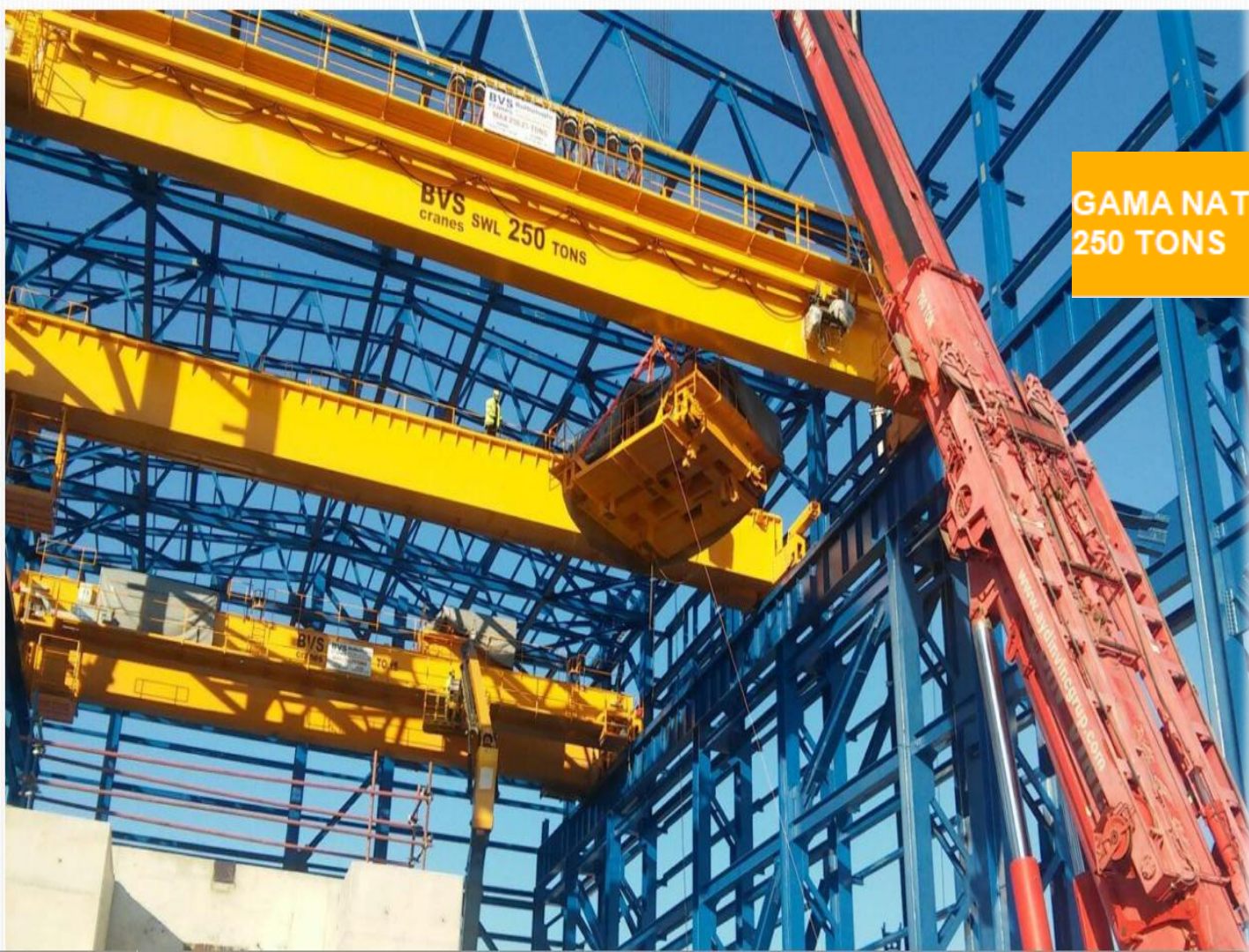
**SIEMENS NATURAL GAS POWER PLANT  
250/25/3,2 TONS**

SIEMENS 250/25/3,2 TONS CAPACITY DOUBLE GIRDER OVERHEAD TRAVELING CRANES





**SAMSUNG NATURAL GAS POWER  
PLANT  
140/25 TONS**



**GAMA NATURAL GAS POWER PLANT  
250 TONS**

# Çengel - Ova HES Work-Site GEYVE / SAKARYA



# GEMAK SHIPYARD





GEMAK SHIPYARD



## TÜBİTAK Q:120 Tons H:8,5+6 M Gantry Crane





**İSDEMİR SLAB STOCK AREA  
2X30 TONS**

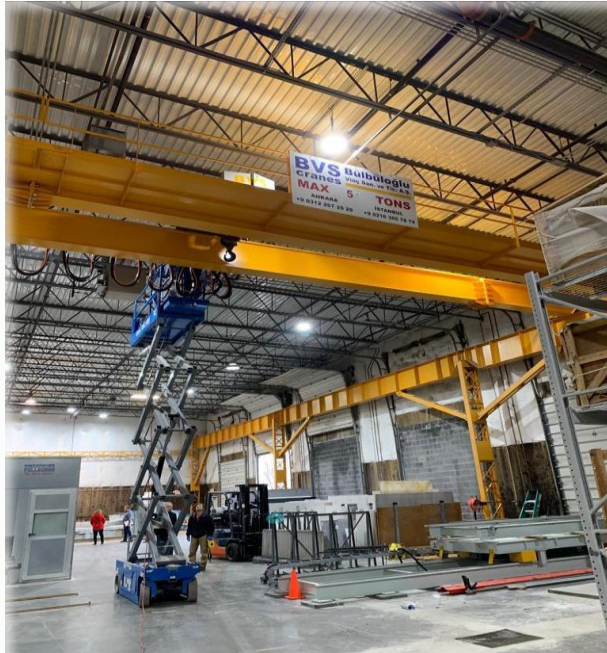
## C TYPE GANTRY CRANE- IRELAND





VINCI&BOUYGUES/LE REUNION  
ISLAND/France  
(26 TONS)

## DOUBLE GIRDER OVERHEAD CRANE VIRGINIA, USA



MMK ATAKAŞ METALURGY AND PORTS  
(335/80 TONS)



MMK ATAKAŞ METALURGY AND PORTS  
400(500)/100 TONS





MMK ATAKAŞ METALURGY AND  
HARBOUR CO.  
(400/100) TONS



KROMAN METALURGY AND STEEL  
2X25/15 TONS



## İÇTAŞ 20 TONS WITH TURNING TROLLEY





*We look forward to working together with you to find the most optimal solution to your requirements.*

**BVS Cranes Head Office / Factory:**

Organize Sanayi Bölgesi Ođuz Cad. No:21

Sincan / Ankara

Phone: +90 312 267 29 29

Fax: +90 312 267 02 95

E-Mail: info@bvs.com.tr / export@bvs.com.tr

**BVS Cranes Sales & After Sales Office İzmir**

Aydın Mah. Yeşillik Cad. N0:548/1-C Akatlar İş Merkezi

Karabađlar İzmir / Türkiye

Phone: +90 232 254 22 66

Fax: +90 232 254 22 69

**BVS Cranes Sales & After Sales Office İstanbul**

Şerifali Mah. Mevdudi Sok. No:44 Bülbülođlu Plaza

Ümraniye / İstanbul

Phone: +90 216 365 78 74

Fax: +90 216 365 78 76

**BVS CRANE TECHNOLOGIES GMBH**

Hafenstraße 11447119 Duisburg Germany

Phone: +49 203 501 98 981

**BVS CRANE TECHNOLOGIES USA**

22950 Quicksilver Dr. Dulles, VA 20166 USA

Phone: +703 661 2701



Thank You

[www.bvs.com.tr/enq/](http://www.bvs.com.tr/enq/)