



FMSS EDUCATION

Digital Education Transformation

Bringing Education to Everyone, Everywhere

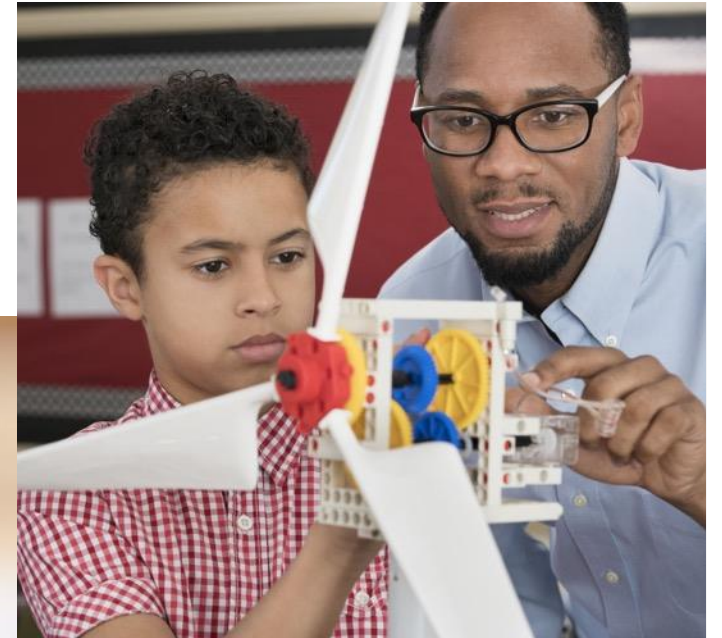




FMSSSEDU

Revolutionizing National and Private Education

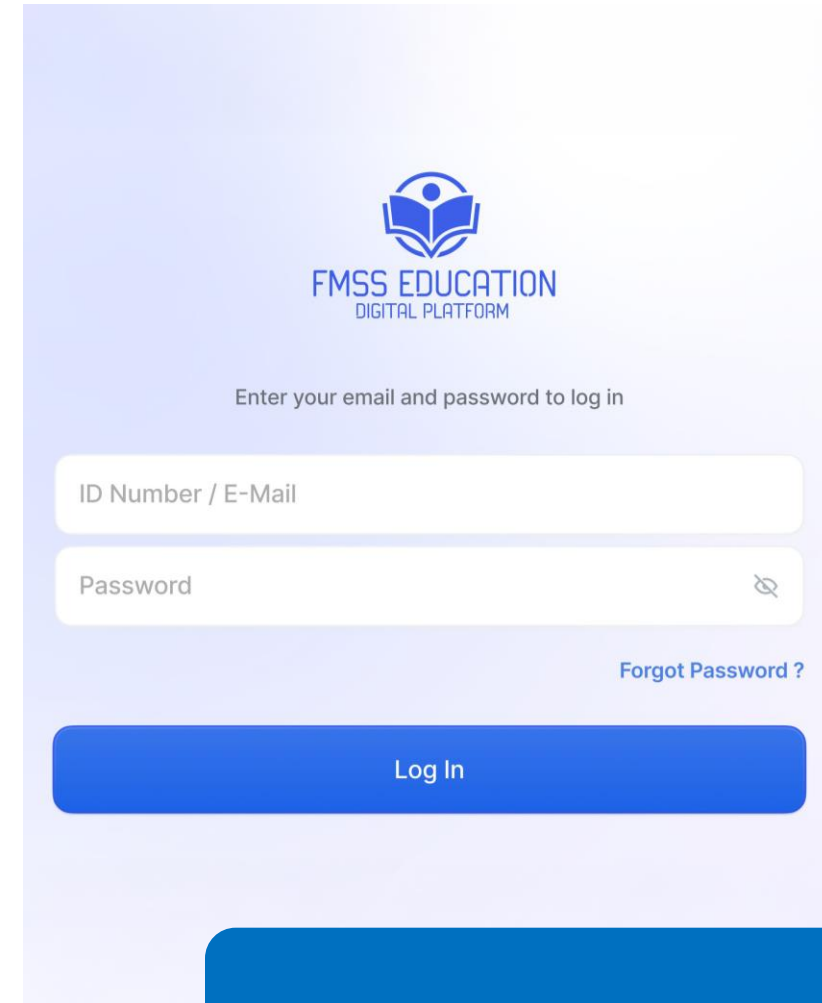
Tailored Solutions for Private Institutions and Government Education Platforms



What is FmssEdu?

Empowering Education

- FmssEdu is a dynamic and customizable education platform designed to meet the needs of private institutions and government education systems.
- Provides comprehensive management solutions from user roles to exam creation.



The image shows a login interface for the Fmss Education Digital Platform. At the top, there is a logo consisting of a stylized book with a person inside, followed by the text "FMSS EDUCATION" and "DIGITAL PLATFORM" below it. Below the logo, there is a prompt "Enter your email and password to log in". There are two input fields: the first is labeled "ID Number / E-Mail" and the second is labeled "Password" with a toggle icon on the right. Below the password field, there is a link "Forgot Password ?". At the bottom, there is a large blue button labeled "Log In".



**Where Every
Student Thrives**

Benefits to Institutions



Dynamic User Roles

Create and manage custom roles for personnel, allowing each staff member to access specific pages and processes.



Flexible Academic and Administrative Management

Adapt the education system to fit specific needs, including academic year schedules, exam periods, grading deadlines, course and curriculum setup, school configurations, and authority definitions.



Comprehensive Reporting

Access detailed reports on school performance with adaptive learning including success rates and other key metrics.



Advanced Exam Management

Manage exams end-to-end, from creation and approval to preparing exam pages, managing transportation, reading with optical systems, and releasing results.

Benefits to Institutions



Financial Management

Track expenses and incomes, manage payments to teachers, and handle student fees.



Integrated LMS

Includes a Learning Management System (LMS) for comprehensive educational delivery and tracking.



Education System Management

Efficiently manage school data, including student records, attendance, and academic performance.



Inventory Management

Track and manage school inventory, including educational materials and supplies.



Adapt to Your Educational and Administrative Needs

- Define academic year start dates, exam periods, grading deadlines.
- Create and manage lessons and curriculums.
- Issue success certificates for students.
- Define grades and levels for students.
- Assign teacher expertise areas.
- Set up rules for absenteeism.



Reporting and Analytics

View performance reports for schools and branches.



Teacher evaluations from parents.

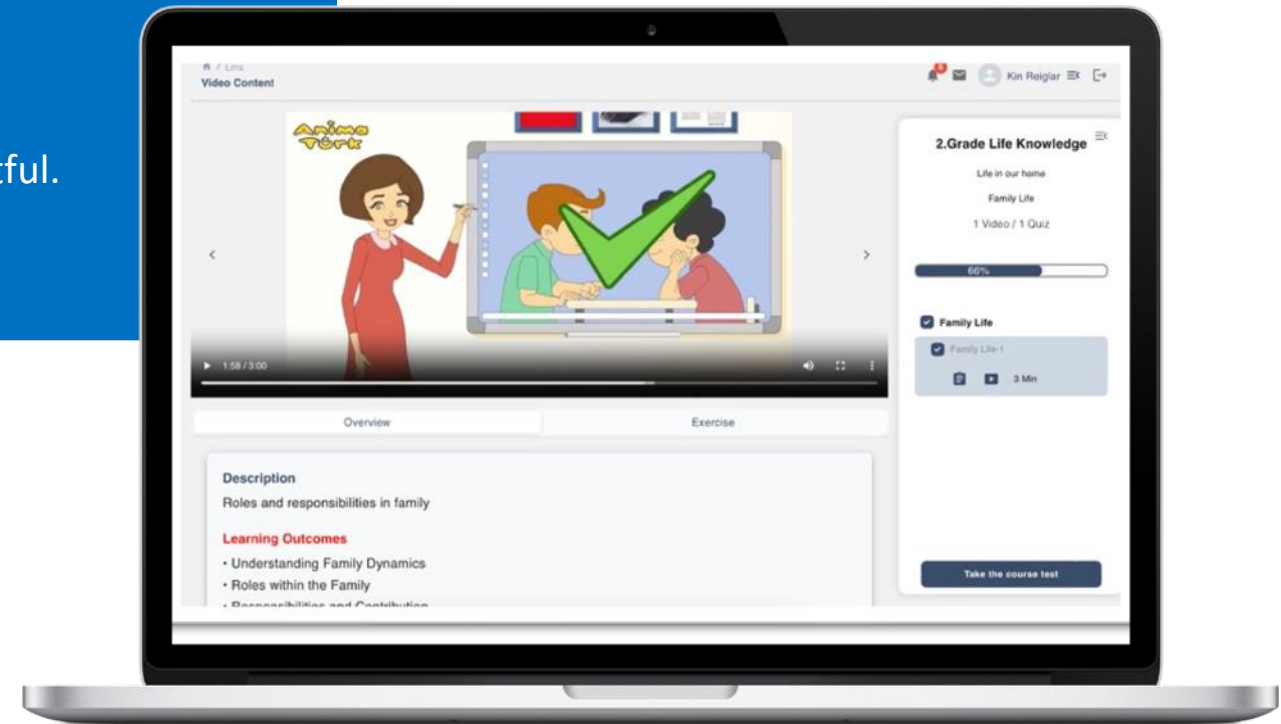


Track success rates and other key metrics.



- Deliver and manage interactive course content with ease, accessible anytime and anywhere.
- Gain real-time insights into student progress and performance, empowering informed teaching decisions.
- Facilitate seamless communication between teachers and students for enhanced engagement.
- Support multimedia-rich content, interactive quizzes, and dynamic assignments to keep learning engaging and impactful.

INTEGRATED LMS



Efficient **Exam** Management

CREATION

Create, approve, print, and shuffle exam questions.

MANAGEMENT

Manage the entire exam process from creation to result release, including transportation and optical reading.

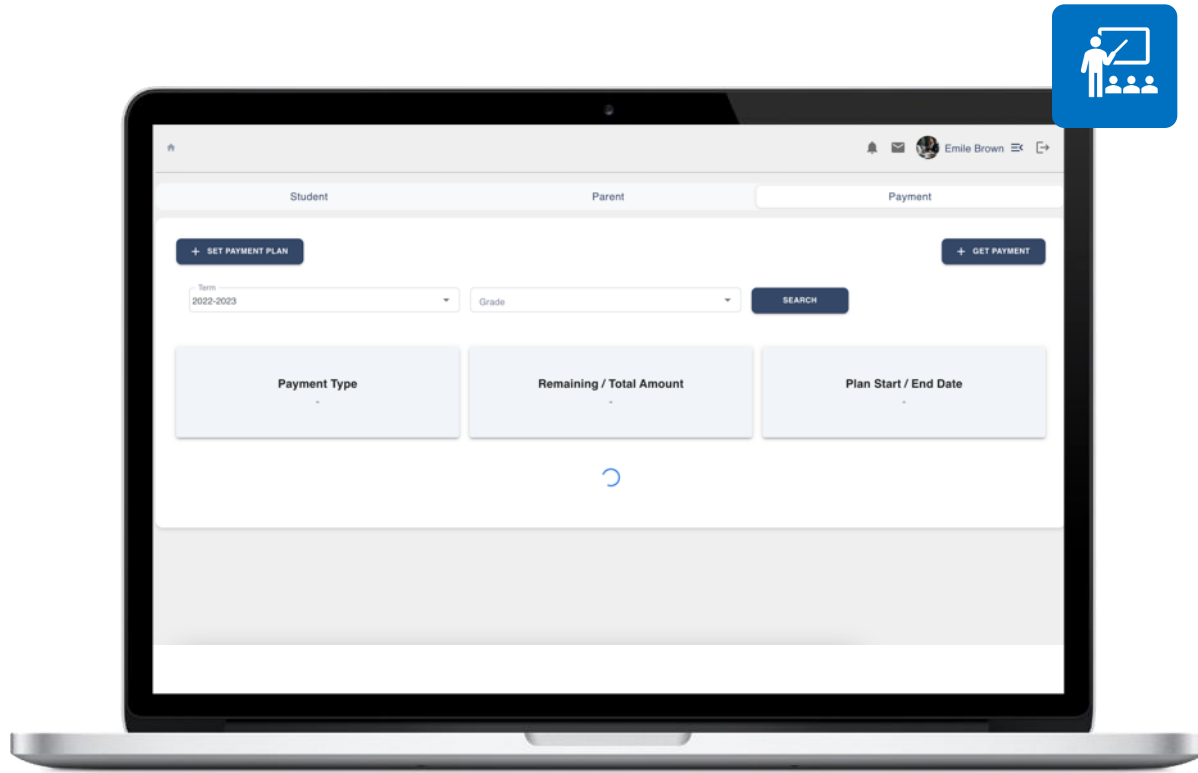
APPLICATION

Have mandatory attendance for specific student group or optional for students to apply.

SCOPES

Includes creating centralized country-wide exams, local exams for specific cities, and private exams for individual schools.

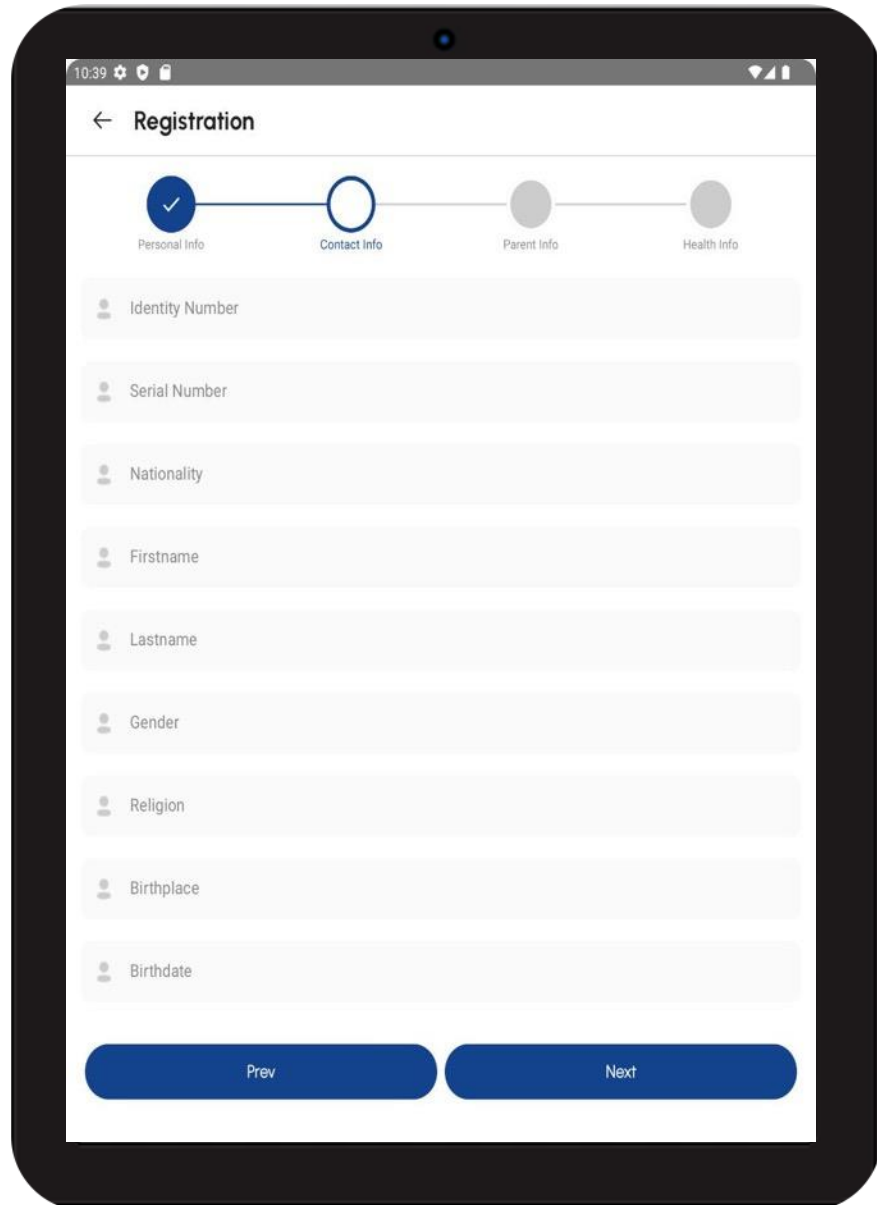




Financial Management

Manage expenses and incomes, payments to teachers, and student fees.





10:39

← Registration

Personal Info Contact Info Parent Info Health Info

Identity Number

Serial Number

Nationality

Firstname

Lastname

Gender

Religion

Birthplace

Birthdate

Prev Next

Empowering Offline Education

Provides an environment for education without electricity or internet.

Schools are equipped with tablets with the FmssEdu app pre-installed for managing teacher, principal, and student information.

Tablets are charged via solar panels.

Teachers can show LMS videos, teach students, conduct the entire education process, enter exam results, track absenteeism, and add new students.

Data is periodically transferred to the central online system via micro SD cards or whenever the device has access to the internet.

Benefits to Users



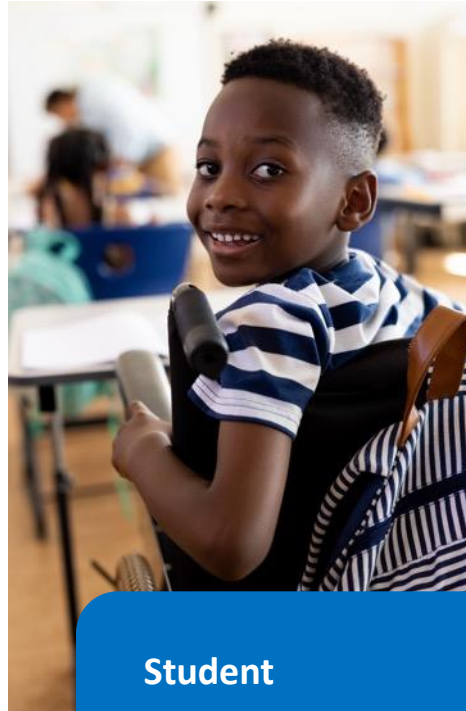
Principal

Streamlined school management, comprehensive reports and efficient communication tools.



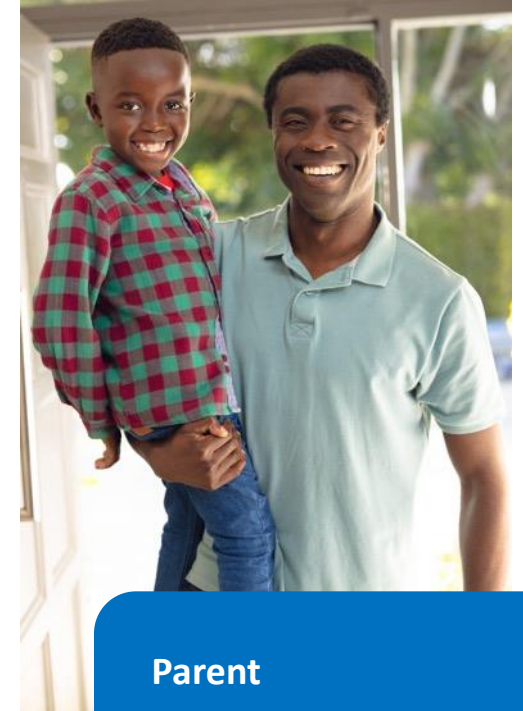
Teacher

Simplified grading, attendance tracking and access to rich educational content.



Student

Engaging learning experiences, easy access to homework and grades, and personalized learning paths.



Parent

Transparency in child's education, access to performance reports and communication with teachers.

Principal Benefits



SCHOOL CONFIGURATION

Define physical configurations and facilities. Set up and manage payment structures for different grades. Add institutional branding to documents such as school logo or stamp.

EMERGENCY NOTIFICATIONS

Quickly notify parents of any emergencies.

ANNOUNCEMENTS AND MESSAGES

Efficiently communicate important information to the school community.

ATTENDANCE MANAGEMENT

Track and manage student attendance.

TEACHER EVALUATIONS

See teacher performance evaluation results from parents.

OPTIONAL COURSES AND SPECIALIZED CURRICULUM

Define optional courses or create specialized curriculums.

PERFORMANCE REPORTS

See grade and branch success rates, student distribution, and more reports.

Teacher Benefits



HOMEWORK TRACKING

Monitor and manage student homework assignments.

INDIVIDUAL QUESTION DEFINITIONS

Create and customize questions for assessments.

ONLINE ATTENDANCE

Track student attendance digitally.

GRADING

Simplify the grading process for assignments and exams.

STUDENT FEEDBACK

Provide feedback on student performance and assignments.

CURRICULUM TRACKING

Monitor the progress of the curriculum.

GROUP QUESTION SETS

Collaborate with other teachers to create question sets.

STUDY SESSIONS (ETUDES)

Easily create and manage supplemental lessons for students.

Student Benefits



DIGITAL HOMEWORK

Access and submit homework assignments online.

LMS

Access course content and assignments easily.

INDIVIDUAL DEVELOPMENT

Track personal learning progress and goals with AI assistance.

ATTENDANCE TRACKING

View attendance records.

GRADES

Check grades and academic performance.

CLASS/EXAM CALENDARS

Stay informed about class schedules and exam dates.

Parent Benefits



DIGITAL HOMEWORK TRACKING

Monitor children's homework assignments and progress.

EMERGENCY NOTIFICATIONS

Receive immediate alerts for any emergencies.

PAYMENT PLANS

Manage and view payment schedules and fees.

TEACHER FEEDBACK

Give teacher evaluations and feedback at the end of each semester.

CLASS/EXAM CALENDARS

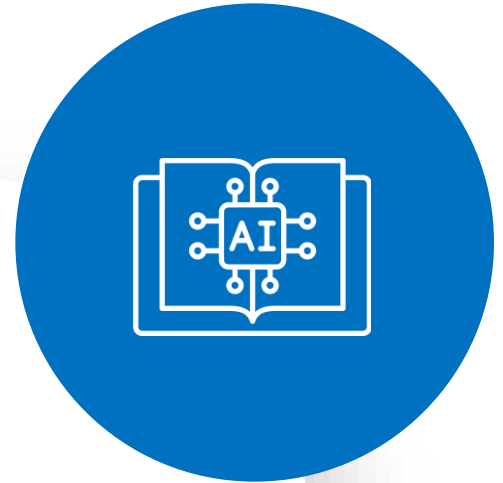
Stay updated on class schedules and exam dates.

ATTENDANCE TRACKING

View or create attendance records. Notify whenever student is absent from classroom.

What's Next?

- ❖ Gamification of education
- ❖ AI based adaptive learning
- ❖ Edutokens: Earn and Spend
- ❖ LMS shaped by student feedback





FmssEdu

Transform Your Education Experience with FmssEdu



www.fmssedu.com



info@fmsstech.com



+90 (216) 969 8979