



Directly From Manufacturer

**DAYMOTIC DIS. TIC. A.S.**

[www.daymotic.com](http://www.daymotic.com)

# About Our Company

## Our Vision

To be the leading supplier of high-quality gas appliance components and industrial solutions in the Turkish market and beyond, providing innovative products that meet the highest international standards.

We are committed to delivering excellence through continuous innovation, superior quality control, and exceptional customer service.

## Our Mission

To provide reliable, safe, and efficient gas appliance components that enhance the performance and safety of our customers' products. We strive to build long-term partnerships based on trust, quality, and mutual success.

**15+**

Years Experience

**500+**

Product Variants

**50+**

Countries Served

## Our Core Values



### Quality Assurance

Rigorous quality control processes ensure every product meets international standards and customer expectations.



### Innovation

Continuous research and development to provide cutting-edge solutions for evolving market needs.



### Customer Focus

Building lasting relationships through exceptional service, technical support, and customized solutions.



### Global Reach

Expanding our presence worldwide while maintaining local expertise and personalized service.



### Sustainability

Committed to environmentally responsible practices and energy-efficient product solutions.



### Compliance

Full adherence to international safety standards, regulations, and industry best practices.

# -Oven Gas Appliances Parts



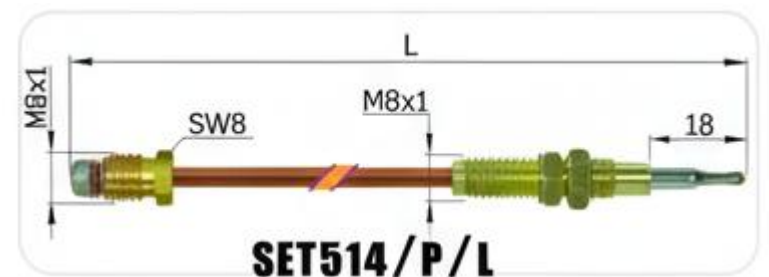
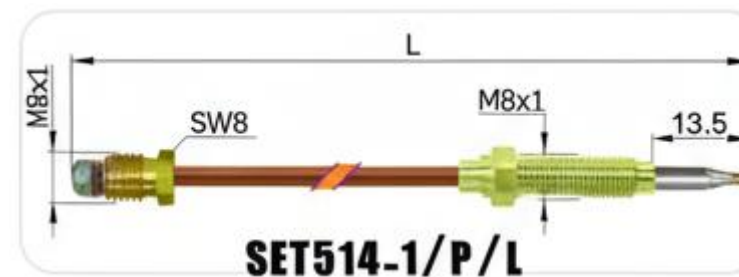
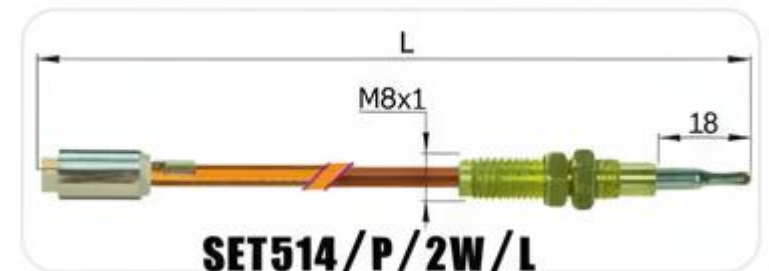
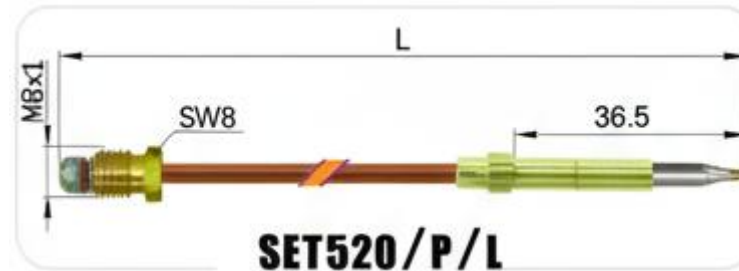
**SET220**



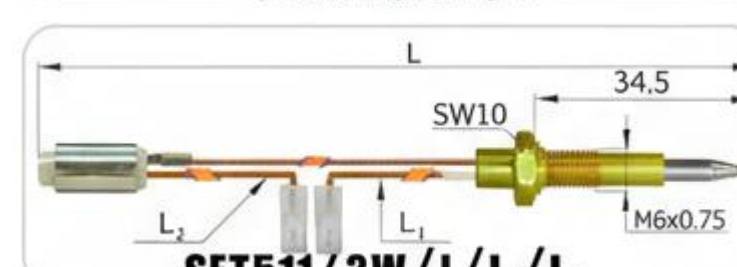
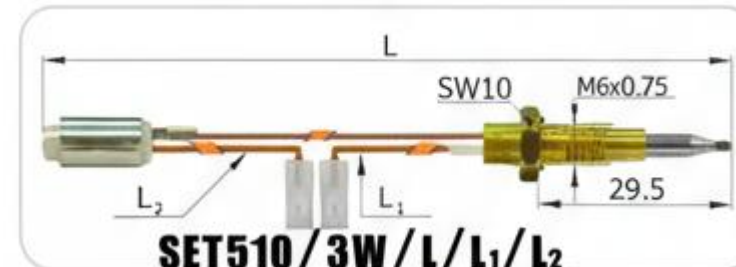
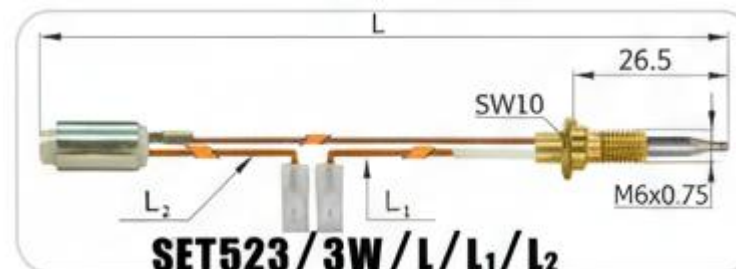
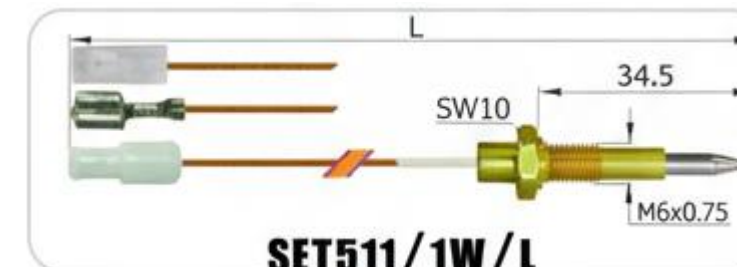
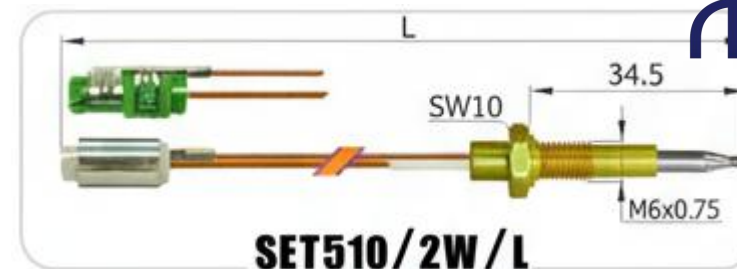
**SET222**



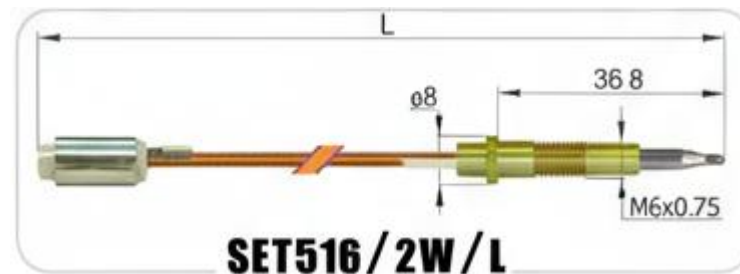
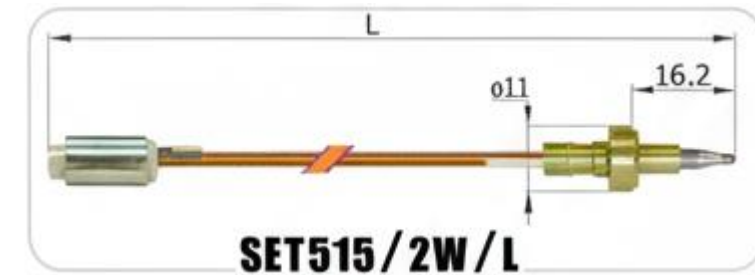
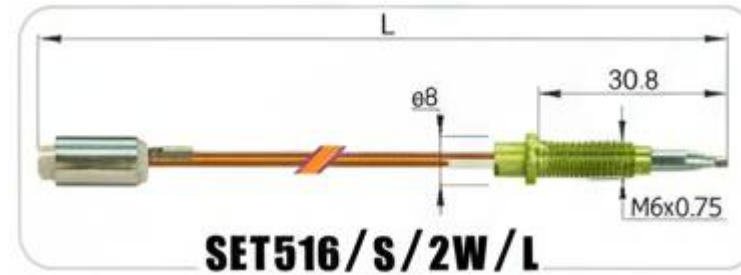
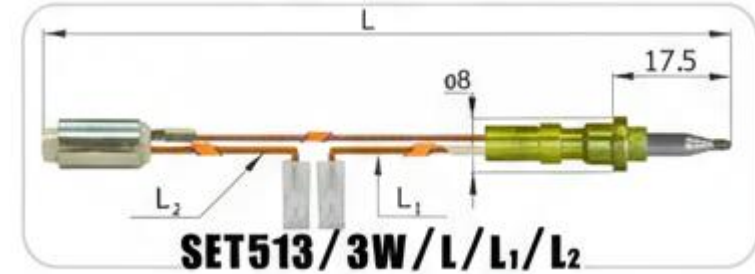
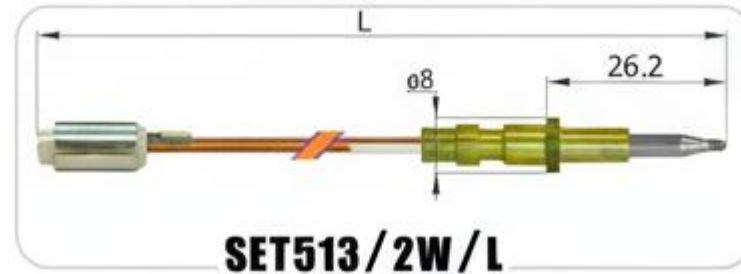
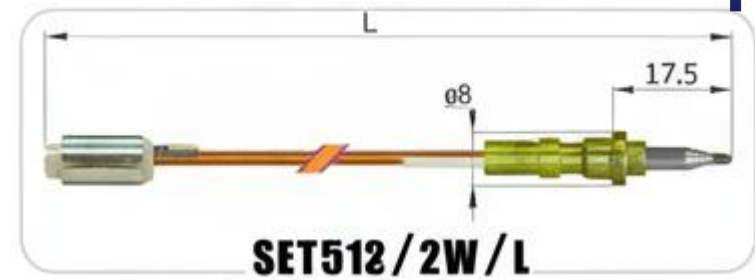
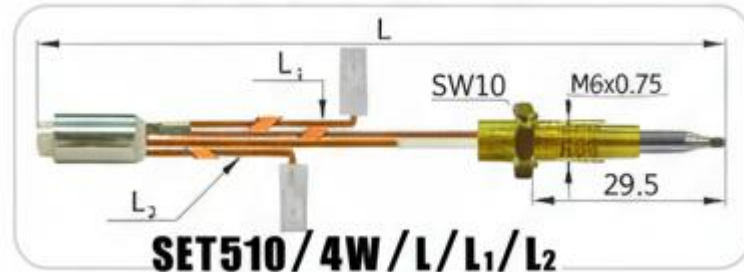
**SET225**



# -Oven Gas Appliances Parts



# -Oven Gas Appliances Parts



-Full Electrical  
Oven



LUX-FT



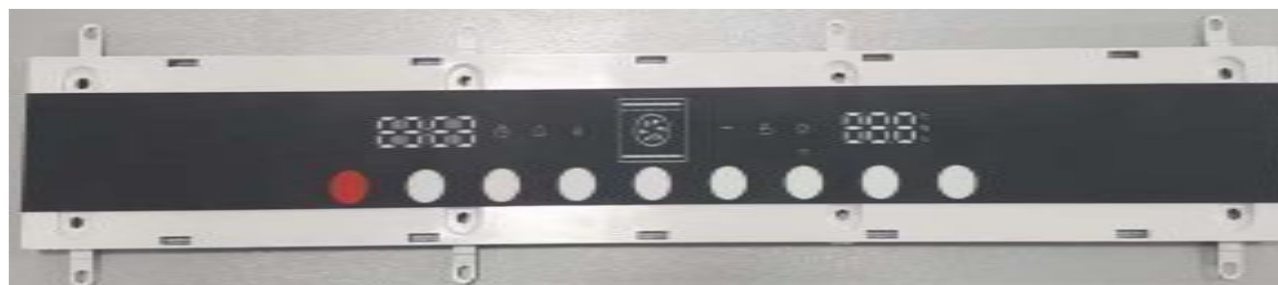
STD-FT



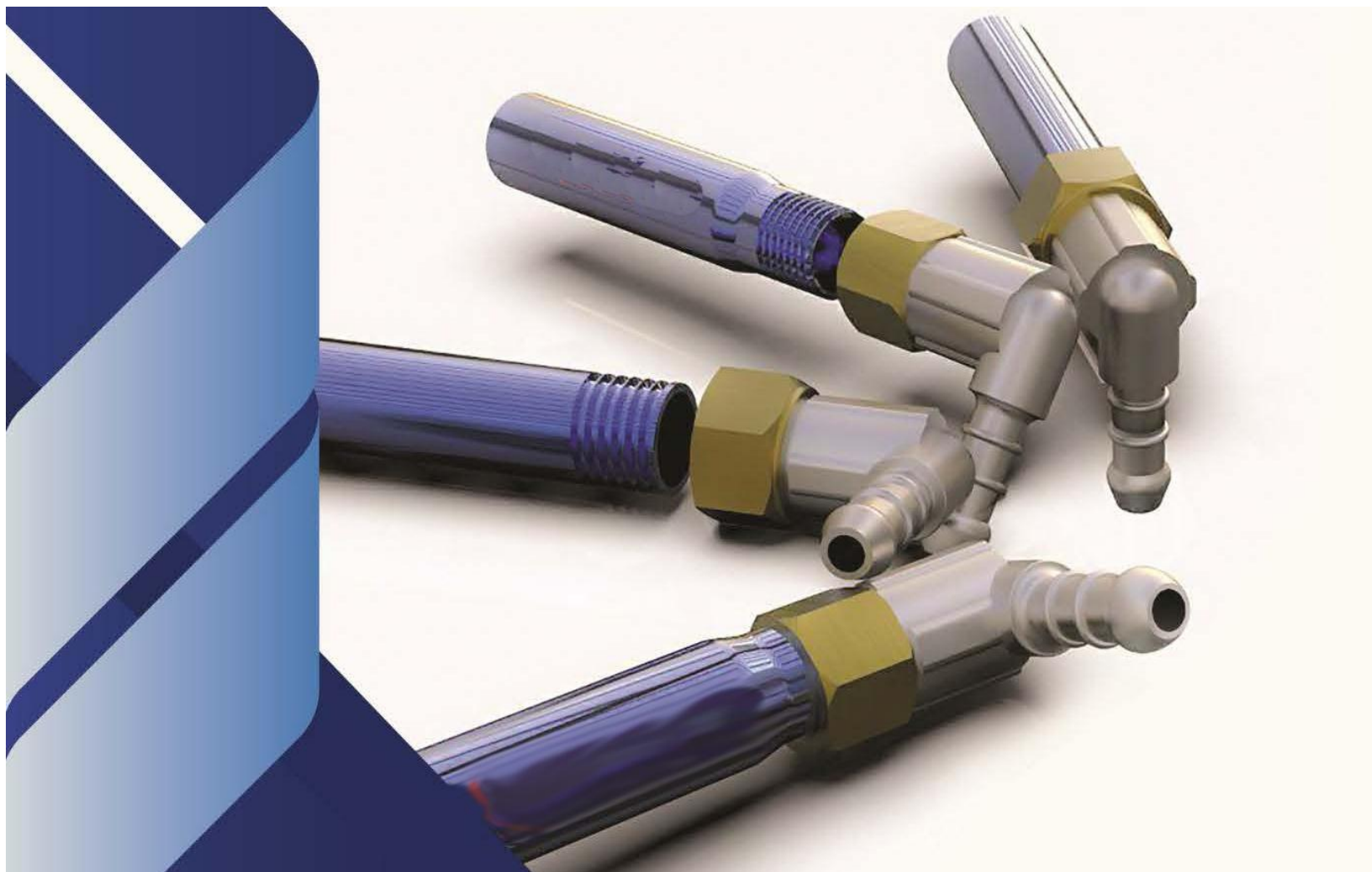
STD-ST



-Full Electrical  
Oven



- Mainfold Tubes
- Aluminium Pipes
- Revolving Gas Hose Nozzle
- Connectors





- Gas Hobs
- Gas Stove

## Main Manifolds



### *Special designed Gas manifolds*

*can make complicate gas manifold for special Gas-Hobs and Gas-Stoves*



### *Gas manifolds with brackets*

*High accuracy brackets for tubes acc International Tolerance , we believe . our products increase assemble time in your production line.*



### *Main gas manifolds with digital timer place and governors*

*Exact alignment of both sides of the tube in timer equipped gas stoves*

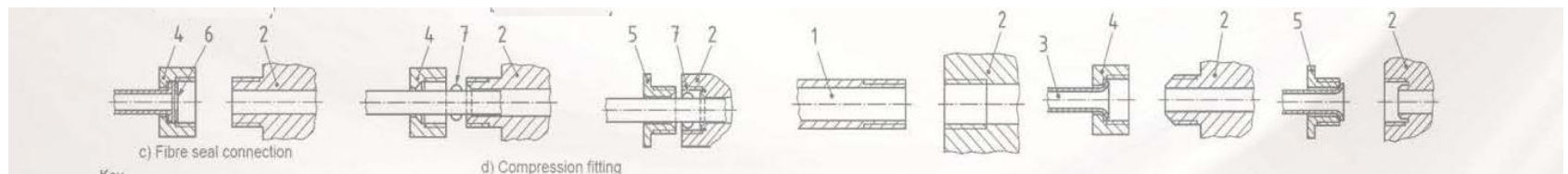
- Gas Hobs
- Gas Stove

## Main Manifolds



*Gas manifolds with all kinds of connectors*

*Different connections and threads*



c) Fibre seal connection

d) Compression fitting

Key

1	pipe	5	tubing nut
2	control	6	fibre seal
3	tube	7	olive
4	union nut		

Number	1	2	3	4	5	6	7
Name	Main Manifold tubes	Valve connectors and Hose fitting	Aluminium tubes	Outside thread nuts for main manifolds	Outside thread nuts for aluminum tubes and hose fitting	Washer	Tube end forms
Thread/Size	14 mm	M14x1	7mm	G 3/8	M12X1		Bid
	15 mm	M16x1	8mm	G 1/2	M13X1	10.5X8.5X0.5 mm	Flare
	16 mm	G1/4			M14X1		Both
	17 mm	G3/8			G1/4		

- Gas Hobs
- Gas Stove

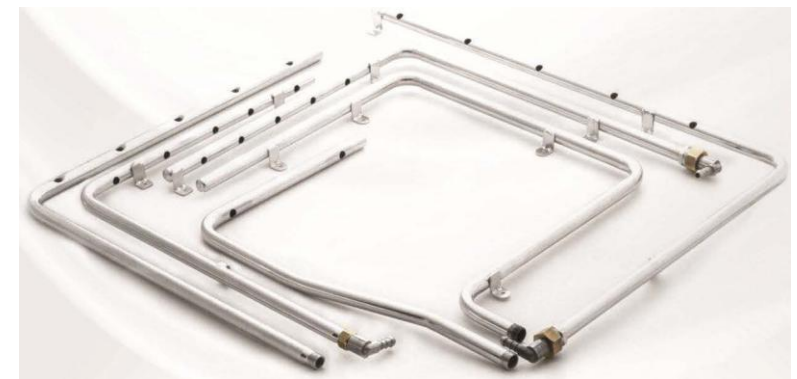
## Main Manifolds

### Abilities :

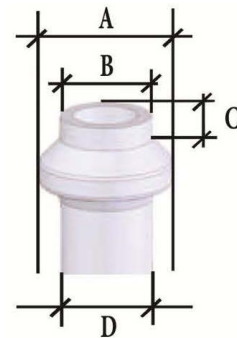
- Close tubes by spinning
- Drilling all holes with high accuracy in the same time
- Good quality for tube bending
- Good quality for timer equipped tubes
- Tolerance based on DIN7168-M
- Electro galvanizing coat based on ASTM B-633
- Minimum distance for first hole till bend 35mm
- Maximum height for brackets 50mm
- High accuracy welding for high speed assemble production lines
- Brackets with stiffeners
- 100 % leaking test
- Drilling without inside and outside burr To prevent damage valves
- Using the best materials
- Produce with different bends and end forms

-Test report with parts include:

- a. Length of 2 side of tube
- b. Dimension of holes
- c. Distance between hole and bend
- d. Coating thickness
- e. Tube height
- f. ...



## Gas-hobs and Gas-stoves Aluminum pipe



						
A	10.3	10.3	-	-	10.3	-
B	7	8	10.3	9.6	8	10.3
C	2	2	2.6	2.6	2	2
D	7	7	7	7	8	8

- Gas Hobs
- Gas Stove

Main Manifolds

## Bended Aluminum tubes

*Bending by CNC machines with high accuracy*

## Bended Aluminum tubes with connections

*High speed assemble in customer production line*

# - Gas Hose Fitting





## - Connectors


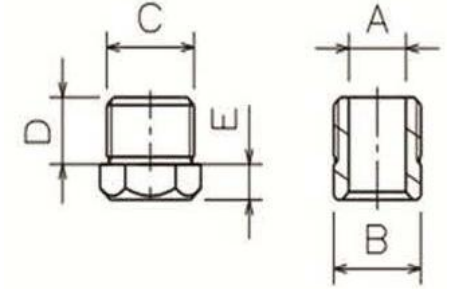
model	M13 x 1	M12 x 1	$\frac{1}{4}$ G
<b>A</b>	8.5 mm	8.5 mm	8.5 mm
<b>B</b>	SW 13	SW 13	SW 13
<b>C</b> (Thread)	M13 x 1	M12 x 1	$\frac{1}{4}$ G
<b>D</b>	8.5 mm	8.5 mm	8.5 mm
<b>E</b>	4.5 mm	4.5 mm	4.5 mm

**Materials**

Brass

Iron

Stainless steel

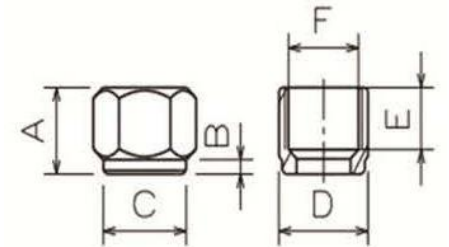
model	M13 x 1	M12 x 1	M13 x 1	$\frac{1}{4}$ G
<b>A</b>	12 mm	12 mm	11 mm	14 mm
<b>B</b>	2 mm	2 mm	2 mm	2 mm
<b>C</b>	13 mm	13 mm	15.3 mm	13 mm
<b>D</b>	SW 15	SW 14	SW 16	SW 15
<b>E</b>	9 mm	9 mm	9 mm	9 mm
<b>F</b> (Thread)	M13 x 1	M12 x 1	M13 x 1	$\frac{1}{4}$ G

**Materials**

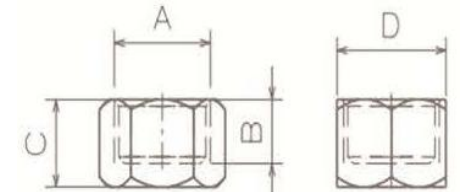
Brass

Iron

Stainless steel

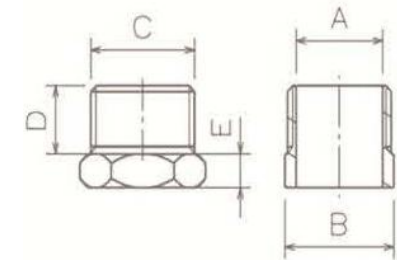
model	$\frac{3}{8}$ G	$\frac{1}{2}$ G	M14 x 1	$\frac{1}{4}$ G
<b>A</b> (Thread)	G 3/8	G 1/2	M14 x 1	G 1/4
<b>B</b>	9.5 mm	13 mm	5.5 mm	6 mm
<b>C</b>	13 mm	16 mm	8.5 mm	9 mm
<b>D</b>	SW 20	SW 24	SW 16	SW 16

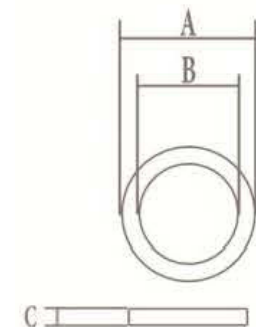


## - Connectors

model	$\frac{3}{8}$ G	$\frac{1}{2}$ G	Materials
<b>A</b>	11.5 mm	16.7 mm	Forged brass
<b>B</b>	SW 17	SW 21	
<b>C</b> (Thread)	$\frac{3}{8}$ G	$\frac{1}{2}$ G	Extrogened brass
<b>D</b>	11 mm	11 mm	Iron
<b>E</b>	5.5mm	5.5mm	

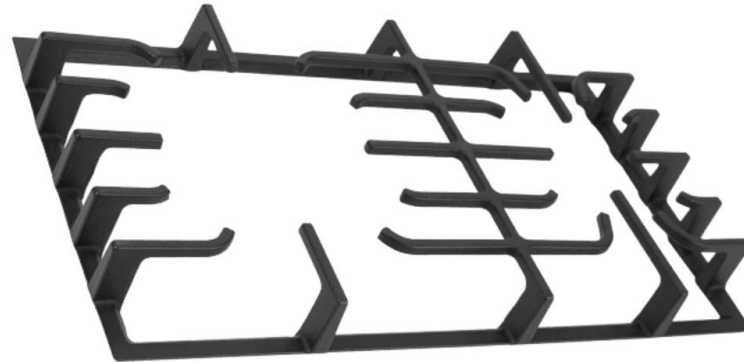
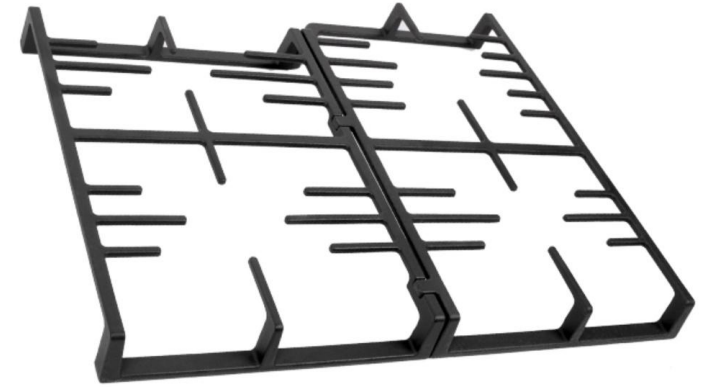
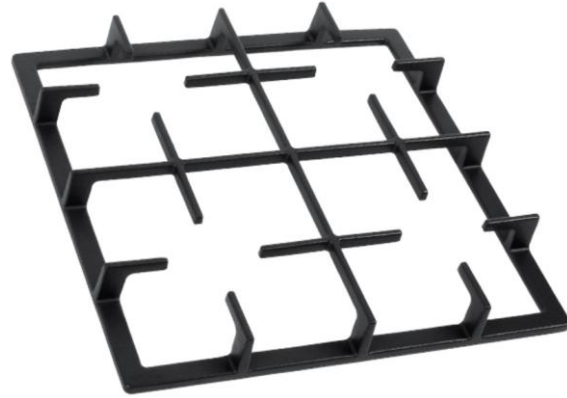
<b>A</b>	10.5 mm
<b>B</b>	8.5 mm
<b>C</b>	0.5 mm

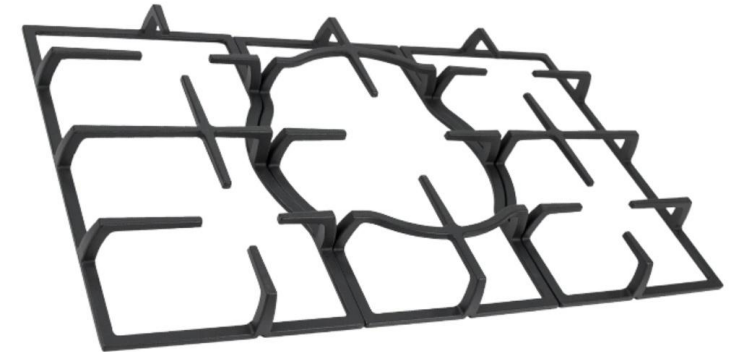
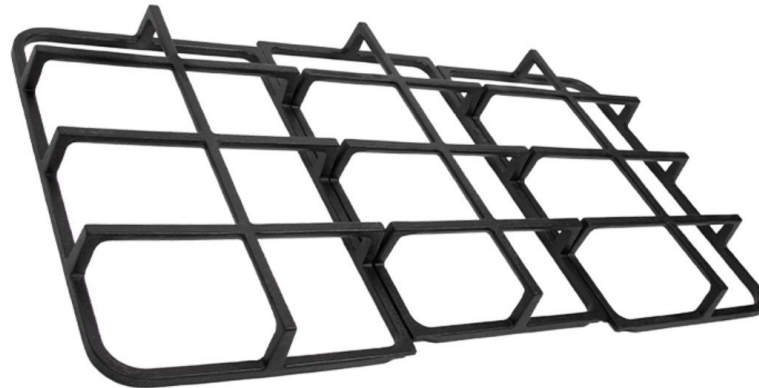
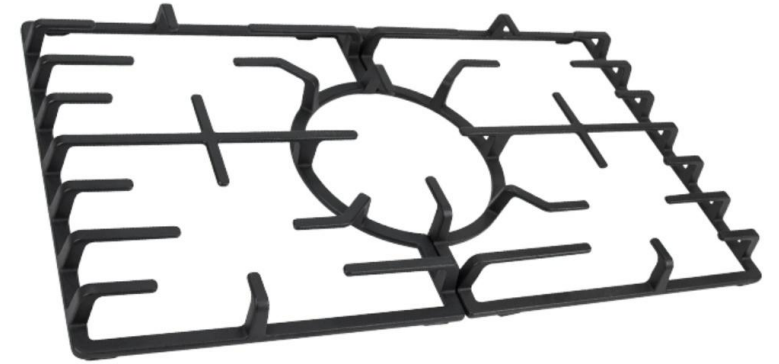
# - Cast Iron Pan Supports



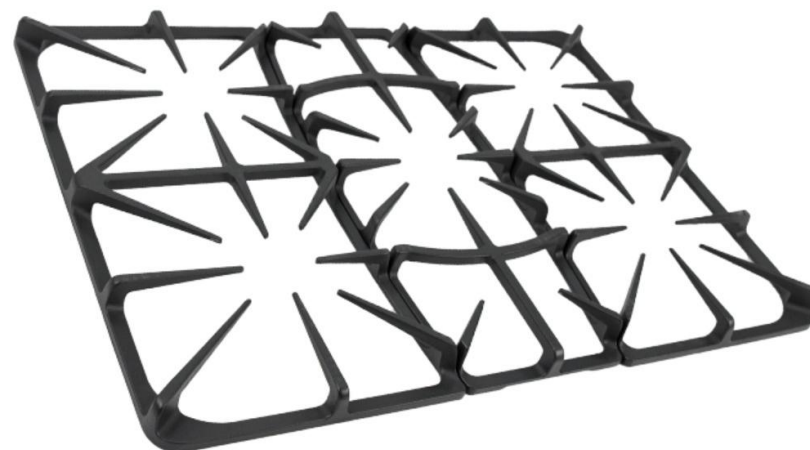
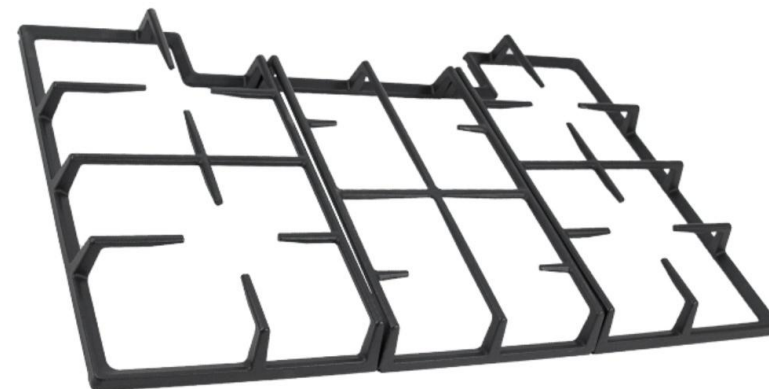
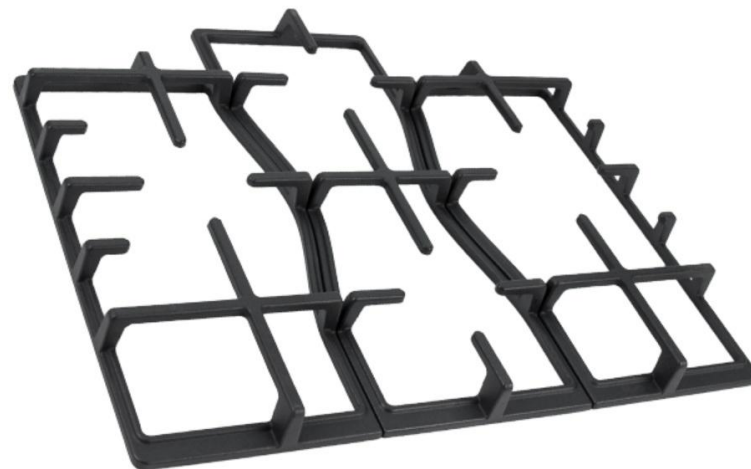
## - Cast Iron Pan Supports



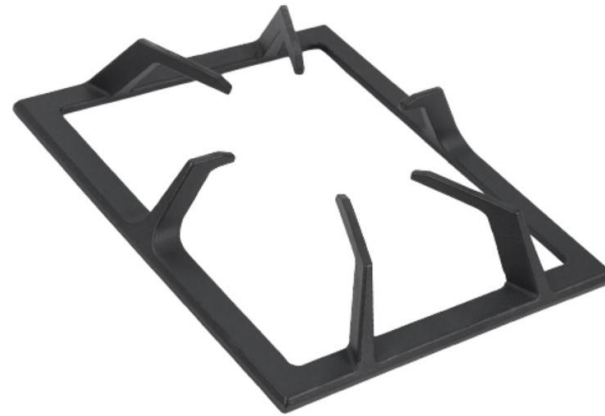
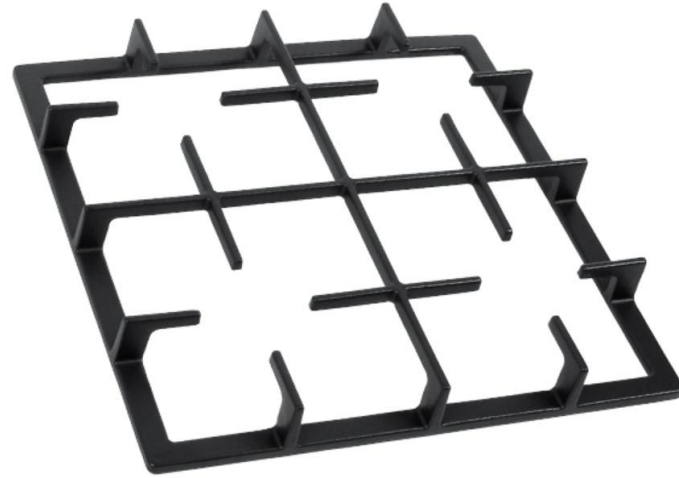
## - Cast Iron Pan Supports



## - Cast Iron Pan Supports

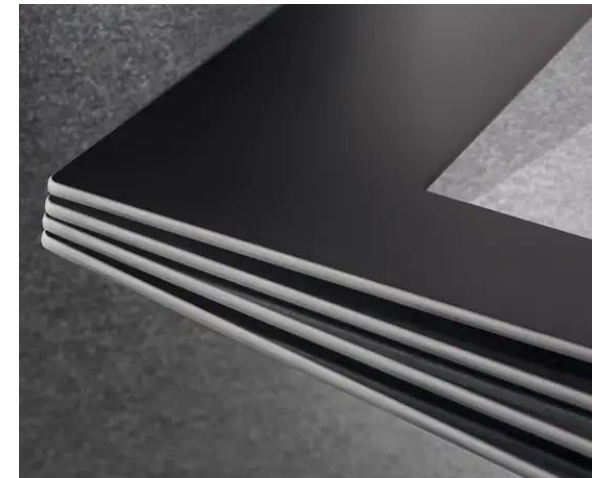


## - Cast Iron Pan Supports





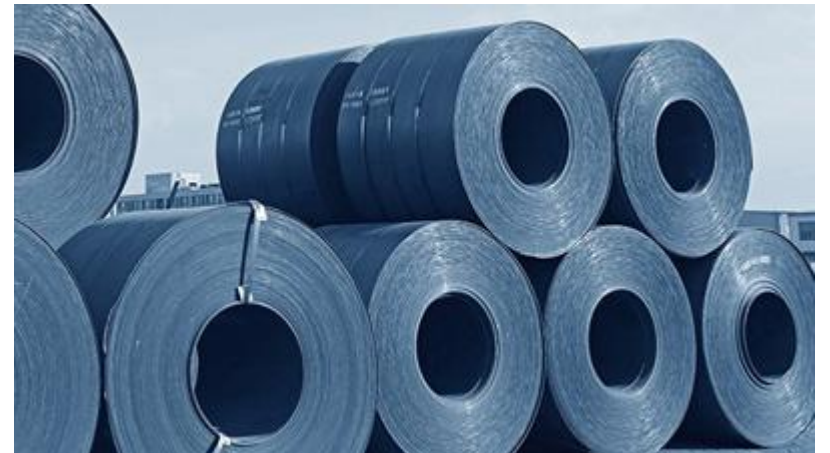
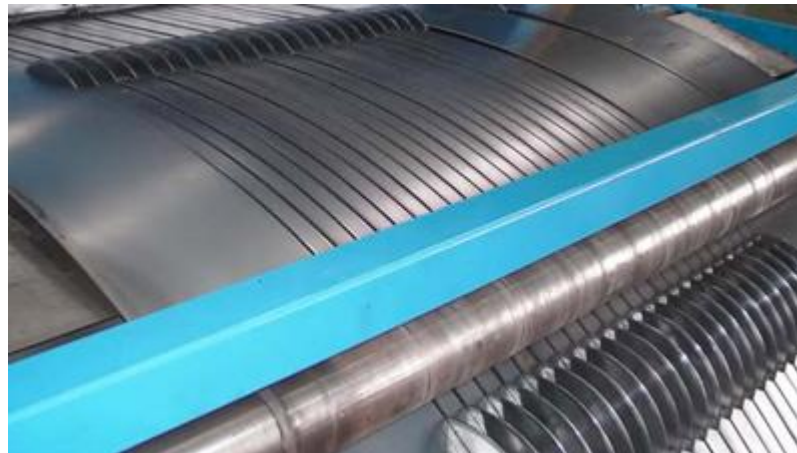
# - Glass



- Glass

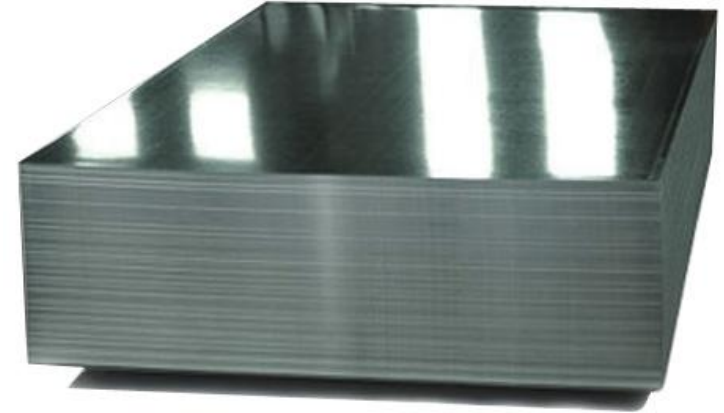


## - Galvanized Sheet Metal





# - Galvanized Sheet Metal





## Contact :

- **DAYMOTIC DIS TICARET A.S.**



- İzzetpaşa Mh. Yeni Yol Cd. Nurol Tower No: 3  
İç Kapı No:104
- Şişli / İSTANBUL-TÜRKİYE
- Tel : +90 212 801 51 76
- Fax : +90 212 801 51 76
- info@daymotic.com -www.daymotic.com