

BUILDING YOUR SPACES





PRODUCTION GENERAL TRADING CONSULTING

Your Partner in Global Trade

We are
Trust Us Global

SMART SOLUTIONS FOR YOUR PROJECTS

Acoustic wooden panels	4-5
Suspended ceiling panels	10-11
Fire rated wood panels	18-19
Micro perforation	22-23
Acoustic fabric wall panels	30-31
Acoustic fabric baffle panels	34-35
Acoustic canopies	38-39
3d acoustic fabric panels	46-47
Wood grille ceiling panels	59-59
Wood wool acoustic panels	66-67

ABOUT US

One of Your Most Trusted Trading Partners in the Global Market

Trust Us Global brings a reliable way of global trading into the market with the owner’s 16 years of international experience. We are committed to quality products and quality services for our clients. That’s why we handle the whole business process carefully from pre-production to the delivery of the goods. We produce acoustic products, metal products, decorative products, partitions, furniture, and other interior and industrial products.

We believe that a more valuable way where customers are earned rather than bought. Therefore, we aim to ensure that our customers receive the right product properly and make them happy with our products and services.

At Trust Us Global, we believe there is a better way for production, trading, and consultancy.

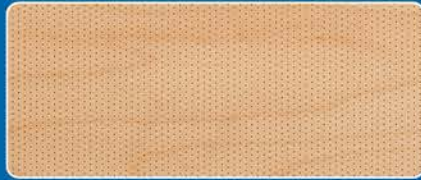
Acoustic
Wooden
Panels



Acoustic
Fabric
Panels



Micro
Perforated
Wooden
Panels



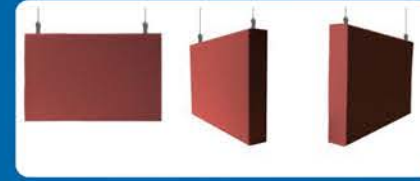
3D
Acoustic
Panels



Wood
Wool
Panels



Acoustic
Fabric
Baffles



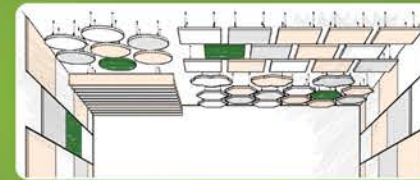
Suspended
Ceiling
Tiles



Wood
Grille
Ceiling



Acoustic
Canopies

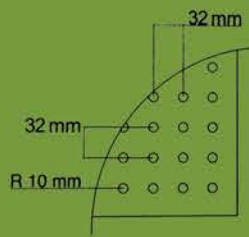
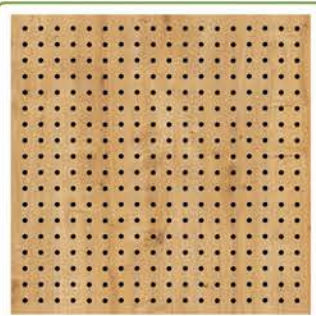


Fire Rated
Panels



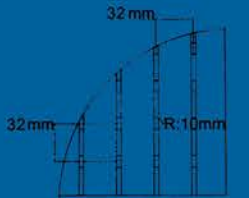
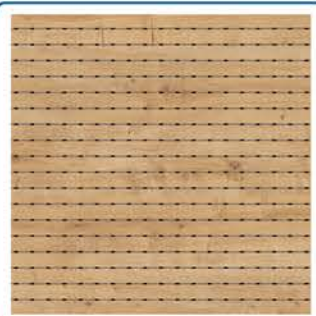
Soundtrust P01
600x600 mm, 517x1381 mm, 517x2400 mm
197x2400 mm, 293x2400 mm, 197x1381 mm
8, 12, 18 mm MDF
Melamine, Natural Veneered, Laminated, Painted
1000 holes/m2
0.40 NRC
Distance btw holes 32x32 mm
Hole diameter 4, 6, 8, 10 mm
Acoustic fleece

P01



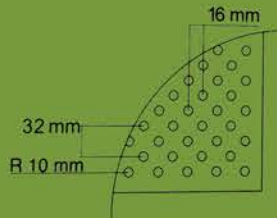
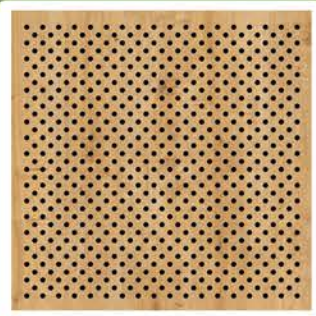
Soundtrust GP11-01
600x600 mm, 517x1381 mm, 517x2400 mm
197x2400 mm, 293x2400 mm, 197x1381 mm
18 mm MDF
Melamine, Natural Veneered, Laminated, Painted
1000 holes/m2
0.37 NRC
Distance btw holes 32x32 mm
Hole diameter 4, 6, 8, 10 mm
Distance btw lines 32 mm
Line depth 6 mm
Line width 3 mm
Acoustic fleece

GP11-01



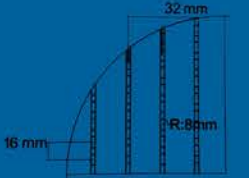
Soundtrust P02 D
600x600 mm, 517x1381 mm, 517x2400 mm
197x2400 mm, 293x2400 mm, 197x1381 mm
8, 12, 18 mm MDF
Melamine, Natural Veneered, Laminated, Painted
2000 holes/m2
0.71 NRC
Distance btw holes 32x16 mm
Hole diameter 4, 6, 8, 10 mm
Acoustic fleece

P02D



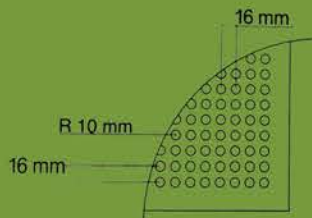
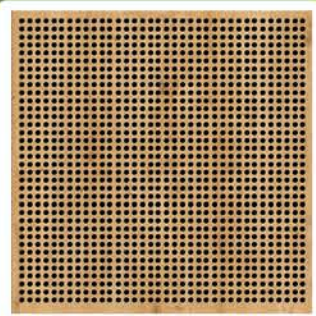
Soundtrust GP11-02
600x600 mm, 517x1381 mm, 517x2400 mm
197x2400 mm, 293x2400 mm, 197x1381 mm
18 mm MDF
Melamine, Natural Veneered, Laminated, Painted
2000 holes/m2
0.63 NRC
Distance btw holes 32x16 mm
Hole diameter 4, 6, 8, 10 mm
Distance btw lines 32 mm
Line depth 6 mm
Line width 3 mm
Acoustic fleece

GP11-02



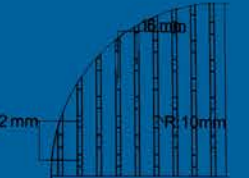
Soundtrust P04
600x600 mm, 517x1381 mm, 517x2400 mm
197x2400 mm, 293x2400 mm, 197x1381 mm
8, 12, 18 mm MDF
Melamine, Natural Veneered, Laminated, Painted
4000 holes/m2
0.90 NRC
Distance btw holes 16x16 mm
Hole diameter 4, 6, 8, 10 mm
Acoustic fleece

P04



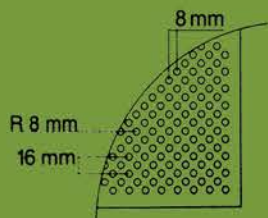
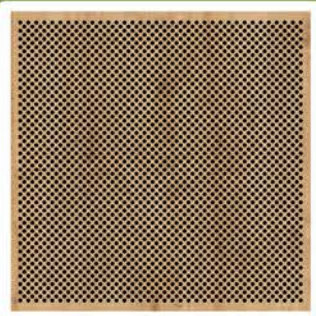
Soundtrust GP12-02 D
600x600 mm, 517x1381 mm, 517x2400 mm
197x2400 mm, 293x2400 mm, 197x1381 mm
18 mm MDF
Melamine, Natural Veneered, Laminated, Painted
2000 holes/m2
0.63 NRC
Distance btw holes 32x16 mm
Hole diameter 8 mm
Distance btw lines 16 mm
Line depth 6 mm
Line width 3 mm
Acoustic fleece

GP12-02 D



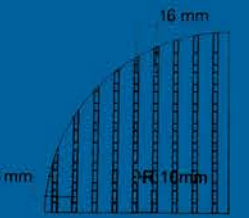
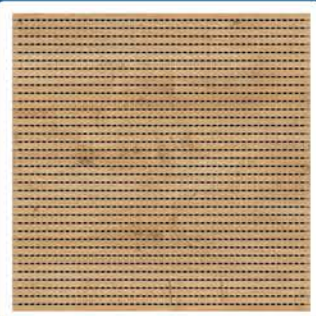
Soundtrust P08 D
600x600 mm, 517x1381 mm, 517x2400 mm
197x2400 mm, 293x2400 mm, 197x1381 mm
8, 12, 18 mm MDF
Melamine, Natural Veneered, Laminated, Painted
8000 holes/m2
0.93 NRC
Distance btw holes 16x8 mm
Hole diameter 4, 6, 8, 10 mm
Acoustic fleece

P08 D



Soundtrust GP12-04
600x600 mm, 517x1381 mm, 517x2400 mm
197x2400 mm, 293x2400 mm, 197x1381 mm
18 mm MDF
Melamine, Natural Veneered, Laminated, Painted
4000 holes/m2
0.90 NRC
Distance btw holes 16x16 mm
Hole diameter 8 mm
Distance btw lines 16 mm
Line depth 6 mm
Line width 3 mm
Acoustic fleece

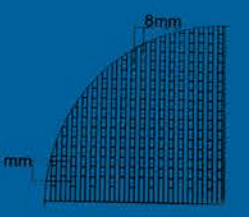
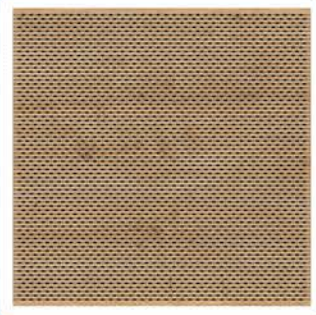
GP12-04



ACOUSTIC WOODEN WALL & CEILING PANELS

Soundtrust GP13-08 D
600x600 mm, 517x1381 mm, 517x2400 mm
197x2400 mm, 293x2400 mm, 197x1381 mm
8, 12, 18 mm MDF
Melamine, Natural Veneered, Laminated, Painted
8000 holes/m2
0.95 NRC
Distance btw holes 16x8 mm
Hole diameter 6 mm, 8 mm
Distance btw lines 8 mm
Line depth 6 mm
Line width 3 mm
Acoustic fleece

GP13-08 D



PLAIN

Size: 600x600, 517x1381, 517x2400/197x2400, 293x2400, 197x1381 mm
Thickness: 8 mm, 16 mm, 18 mm, 20 mm
Core material: MDF, Fire Rated MDF
Surface: Melamine, Natural Veneered, Laminated, Painted
Front and back: Plain

PLAIN & GROOVED PANELS

G11

Size: 600x600, 517x1381, 517x2400/197x2400, 293x2400, 197x1381 mm
Thickness: 16 mm, 18 mm, 20 mm
Core material: MDF, Fire Rated MDF
Surface: Melamine, Natural Veneered, Laminated, Painted
Front: Grooved
Groove: 29/3, 29 mm slat, 3 mm groove, 6 mm groove depth
Back: Plain

G12

Size: 600x600, 517x1381, 517x2400/197x2400, 293x2400, 197x1381 mm
Thickness: 16 mm, 18 mm, 20 mm
Core material: MDF, Fire Rated MDF
Surface: Melamine, Natural Veneered, Laminated, Painted
Front: Grooved
Groove: 13/3, 13 mm slat, 3 mm groove, 6 mm groove depth
Back: Plain

G13

Size: 600x600, 517x1381, 517x2400/197x2400, 293x2400, 197x1381 mm
Thickness: 16 mm, 18 mm, 20 mm
Core material: MDF, Fire Rated MDF
Surface: Melamine, Natural Veneered, Laminated, Painted
Front: Grooved
Groove: 5/3, 5 mm slat, 3 mm groove, 6 mm groove depth
Back: Plain

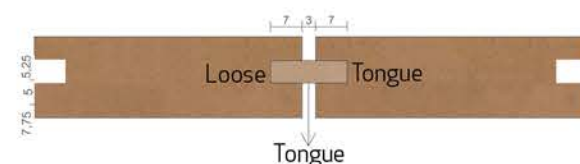
INSTALLATION SYSTEMS

We have two basic installation systems.
They are both suitable for walls and ceilings.



Tongue and Groove System

The system works without any profiles or battens to joint the panels. It provides easy and simple installation for carpenters. Panels can be installed over metal or wood profiles with nail, nail gun and a glue.

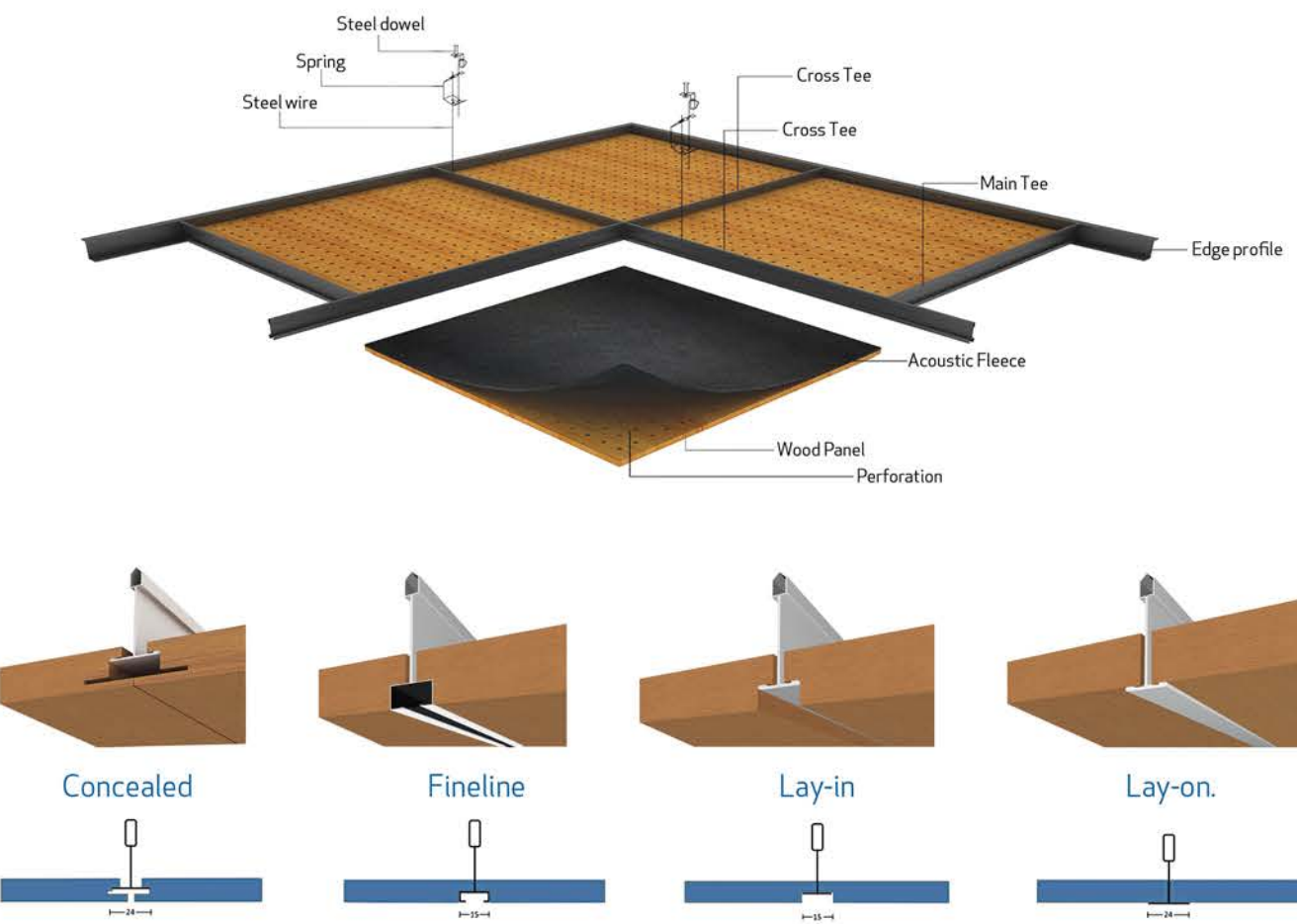


Loose Tongue System

The system works with wood battens from mdf to joint the panels. All around of the panels are with grooves. The small wood battens connect the panels at desired distance. Panels can be installed over metal or wood profiles with nail, nail gun and a glue

ACOUSTIC WOODEN SUSPENDED CEILING TILES

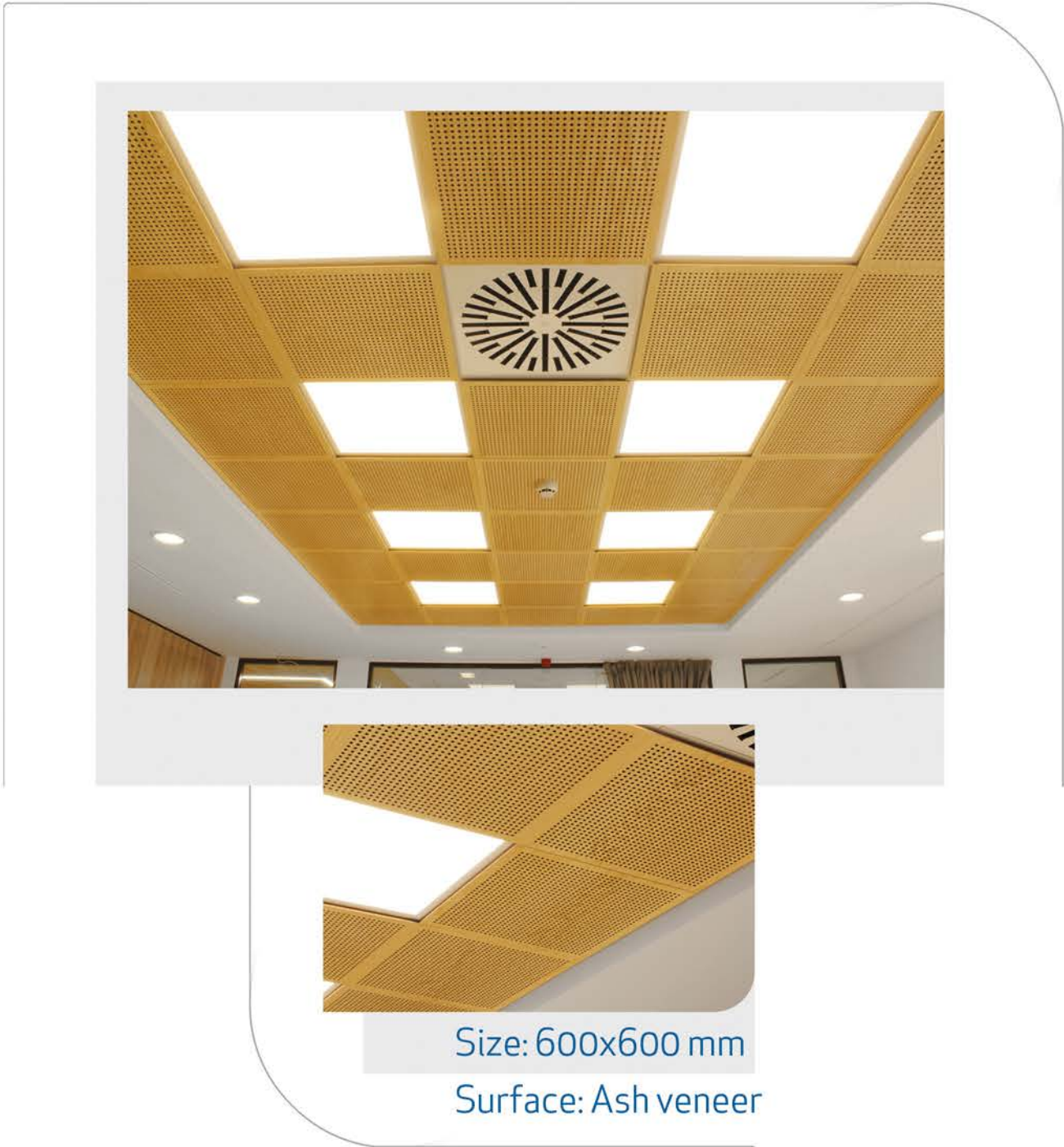
Soundtrust suspended ceiling panels offers you alternative ceiling solutions with their different type of wood and variety of colours. The system works with T Grids such as T24, T15 and T15 Finline. Different colors are available other than white.



Suspended ceiling tiles, also known as drop ceiling tiles or acoustic ceiling tiles, are a common feature in interior design and construction. These tiles are used to create a secondary ceiling below the structural or original ceiling. The tiles are a versatile interior design feature that offers both aesthetic and functional benefits.

They provide a practical way to enhance the appearance of a space, improve acoustics, and conceal infrastructure while allowing for customization and integration of lighting and HVAC systems. The choice of ceiling tiles depends on the specific requirements and design preferences of the project.

Concealed ceiling tiles with T24 grids





Warmth of wood for interiors

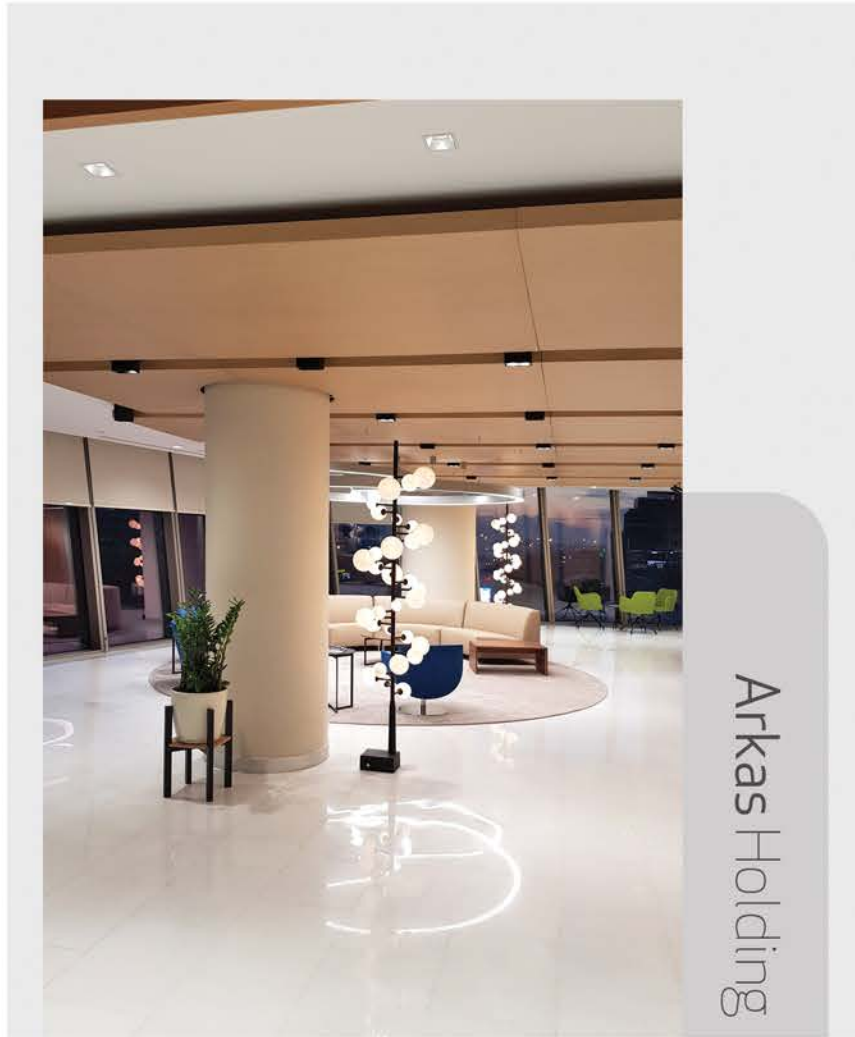
The warmth of wood is a highly regarded and sought-after characteristic in interior design and architecture. It refers to the inviting and cozy feeling that wood materials and elements bring to a space. It is a multifaceted quality that combines aesthetics, sensory experiences, and

environmental considerations to create environments that feel welcoming, comfortable, and timeless. It has enduring appeal in interior design, making it a popular choice for a wide range of architectural and decor projects.

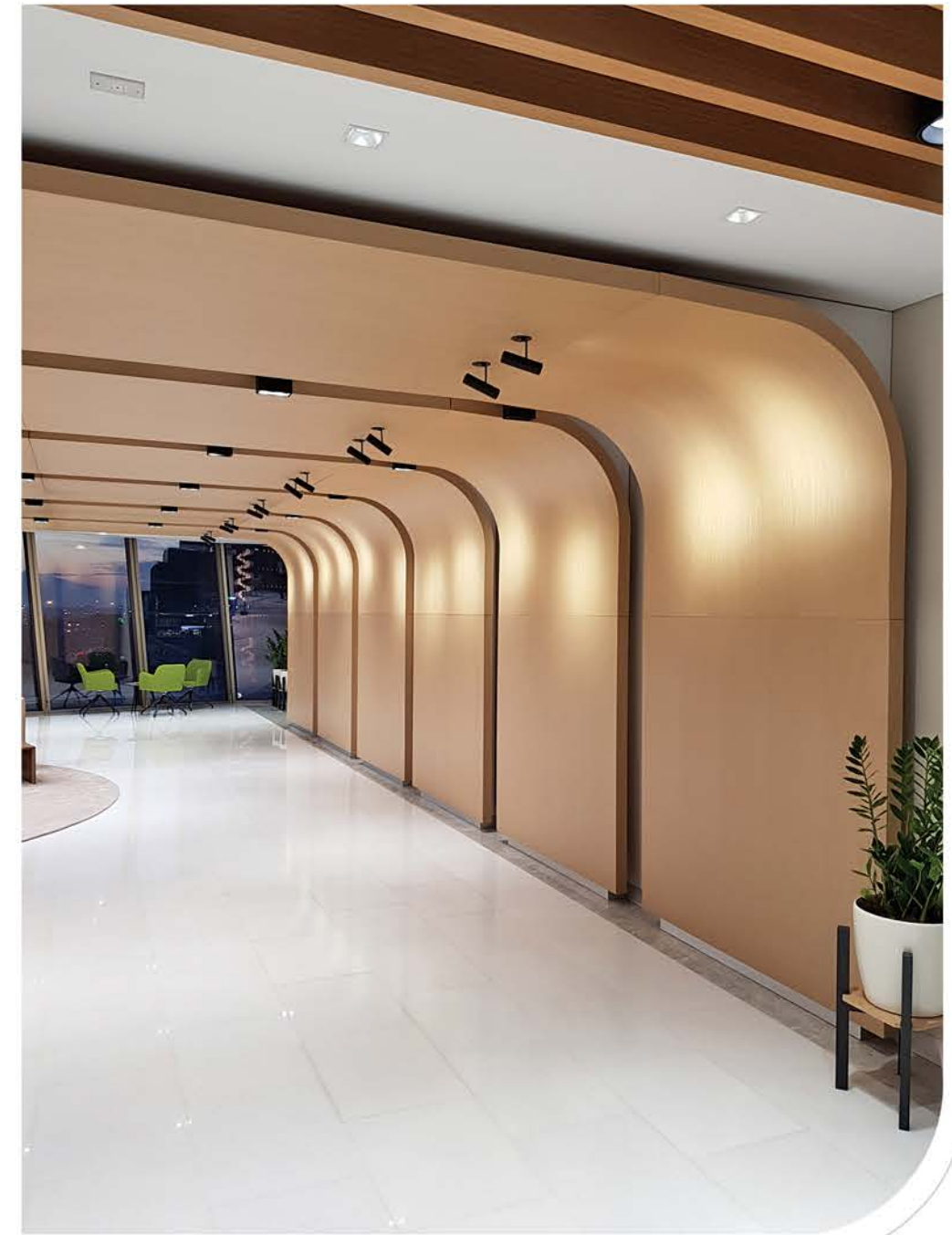


112 Emergency Call Center Istanbul





Arkas Holding's headquarter in Izmir, Turkey has a **unique interior architecture** using custom made **acoustic and decorative wood** panels.



Combining carpentry expertise with acoustic knowledge to provide maximum control over sound and aesthetics.



Improving acoustic quality in schools is an essential part of education.

Soundtrust acoustic wood panels are to provide high sound quality for schools.



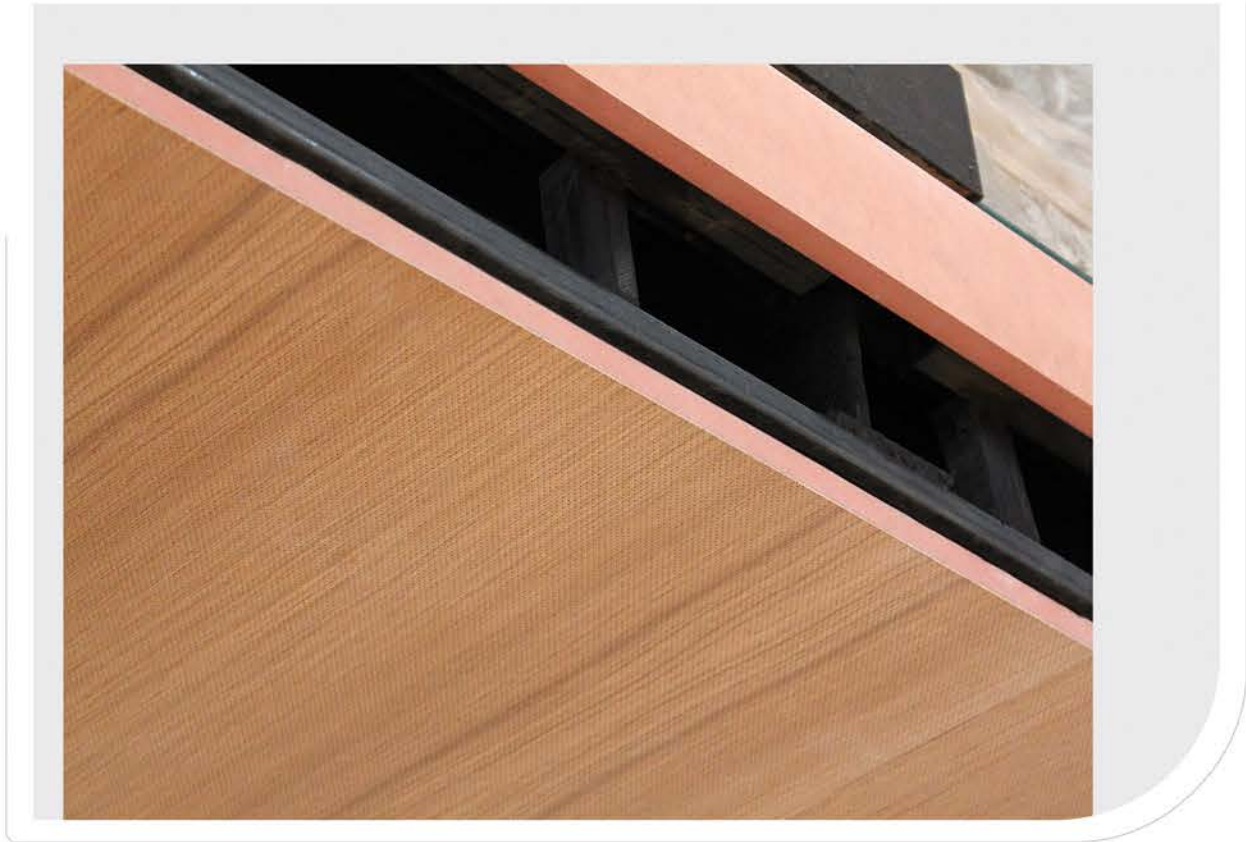
FIRE RETARDANT WOOD PANELS

Soundtrust fire panels meet international fire standards using fire retardant MDF. Under EN 13501-1 and 13501-2 the fire class that we achieve is B s2 d0 and B s1 d0 from MDF. We can also provide highest fire stand-art as A s1 d0 with gypsum core panels upon request. These panels provide vital benefits when safety is primary.

Our panels have a strong resistance to high temperature and flame. Where they are exposed to fire, don't smoke than natural wood and provide enough time to intervene before spreading of fire flames. If the flame goes away, they extinguishes themselves.

As our other panels, fire retardant panels can be painted, melamine, laminated or natural vaneered and polished.We can use fire retardant panels on all of our panel types. These panels especially used in hospitals, air-ports, hotels, shopping malls, cinema, theater and schools.

Building authority requirements	Euroclass according to EN 13501-1	DIN 4102	Test Methods	No smoke	No burning droplets dripping
Non-inflammeable	A1 A2-s1,d0	A1 A2	EN 13501-1	•	•
Low flammability Fire retardant MDF	B- S1,d0 B- S2,d0	B1	EN 622-5	•	• •
Normal flammability Standart Mdf	D-s2,d1	D	EN 622-5		



Fire-rated MDF (Medium Density Fiberboard) panels are a type of engineered wood product designed to resist fire and meet specific fire safety standards. They are specially manufactured to have enhanced fire-resistant properties and engineered to slow down the spread of fire, which can be crucial in applications where fire safety is a primary concern.

Fire Ratings: Fire-rated MDF panels are often classified according to their fire resistance, typically rated based on time, such as 30-minute, 60-minute, or 90-minute fire resistance. These ratings indicate the duration the panels can withstand fire and still maintain their integrity.

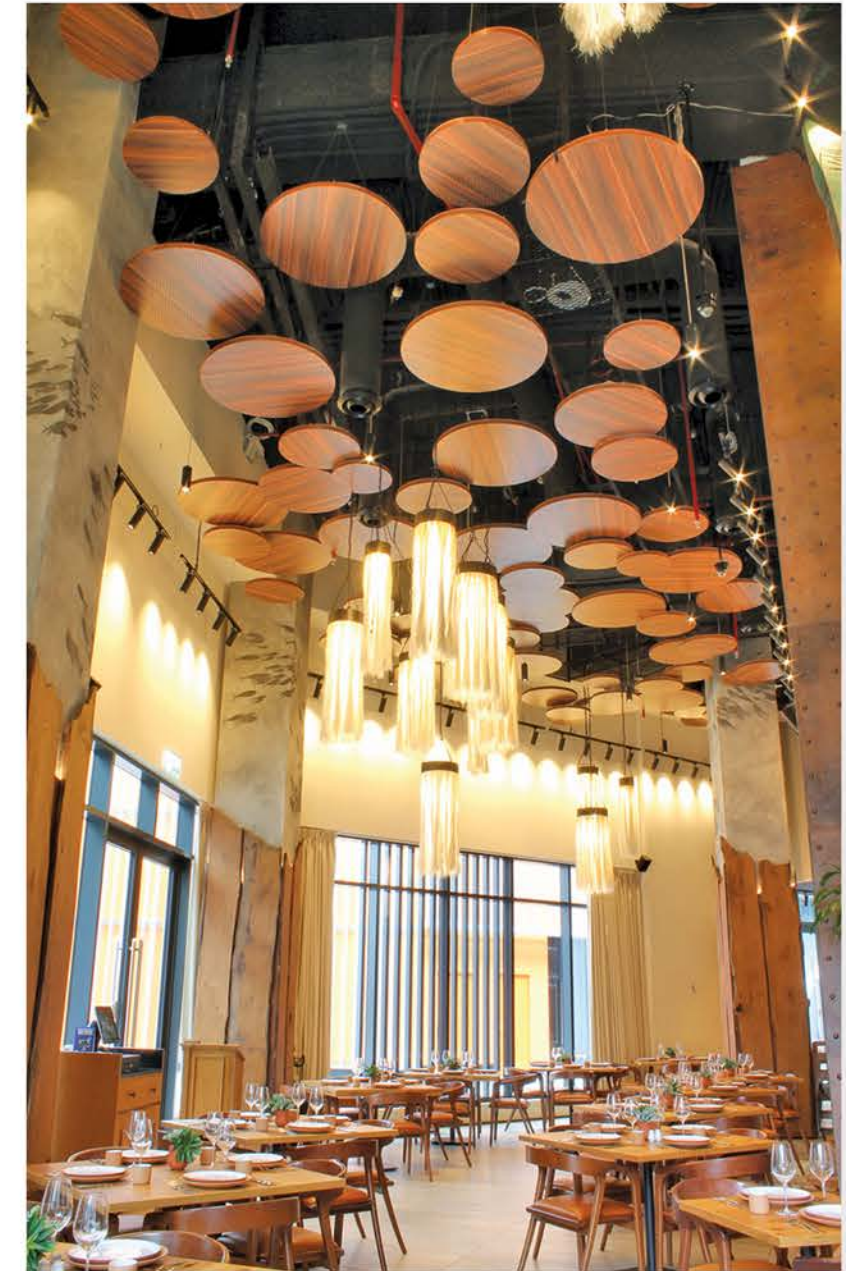
When considering their use, it's essential to choose certified products and ensure proper installation to achieve the desired level of fire protection.

Acoustic wooden ceiling canopies in round shape



Improve your restaurant acoustics
with our **custom-made** perforated
wood panels

Restaurant Acoustics



Puerto 99, Dubai

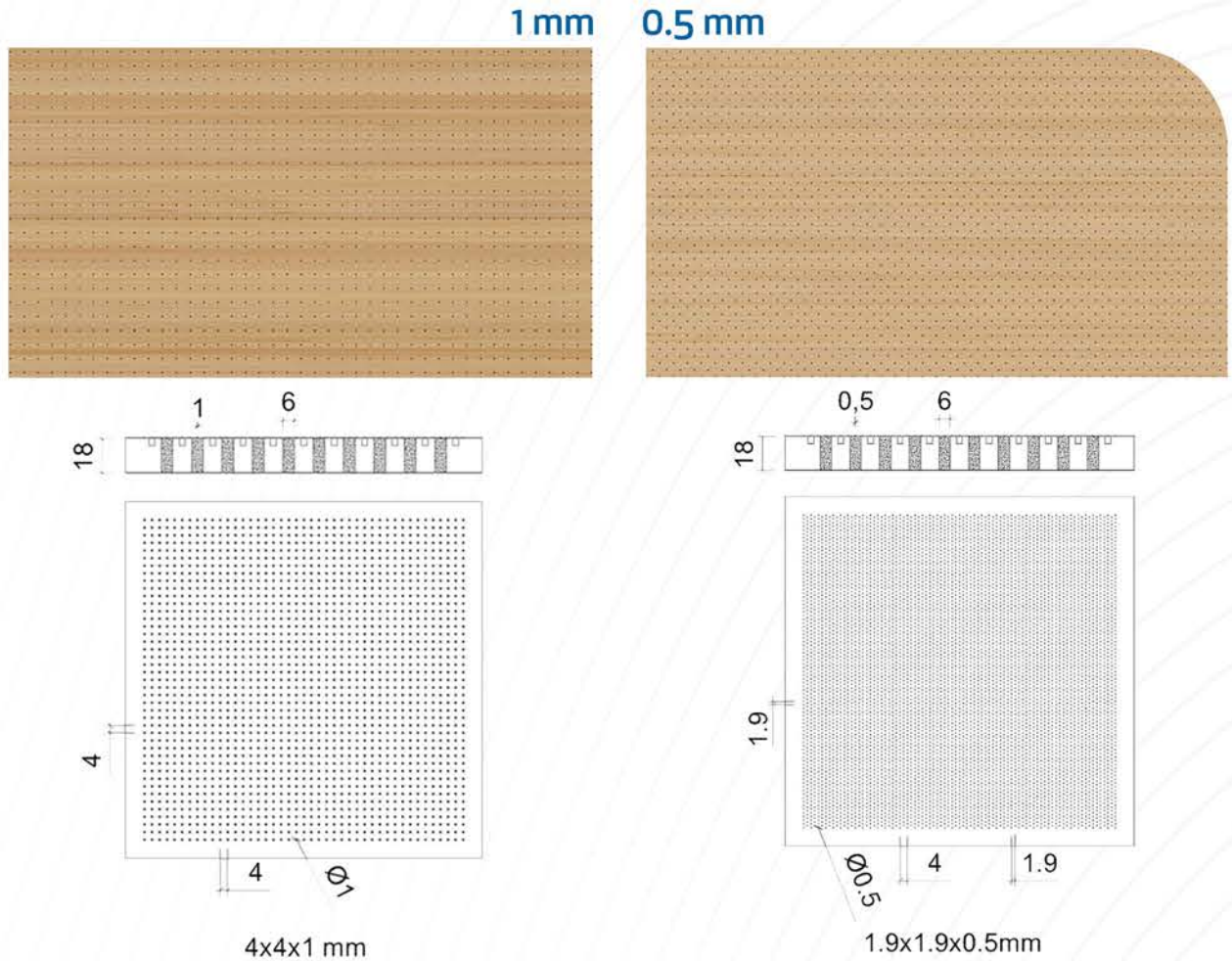
Micro Perforation
The combination of creativity and acoustic comfort

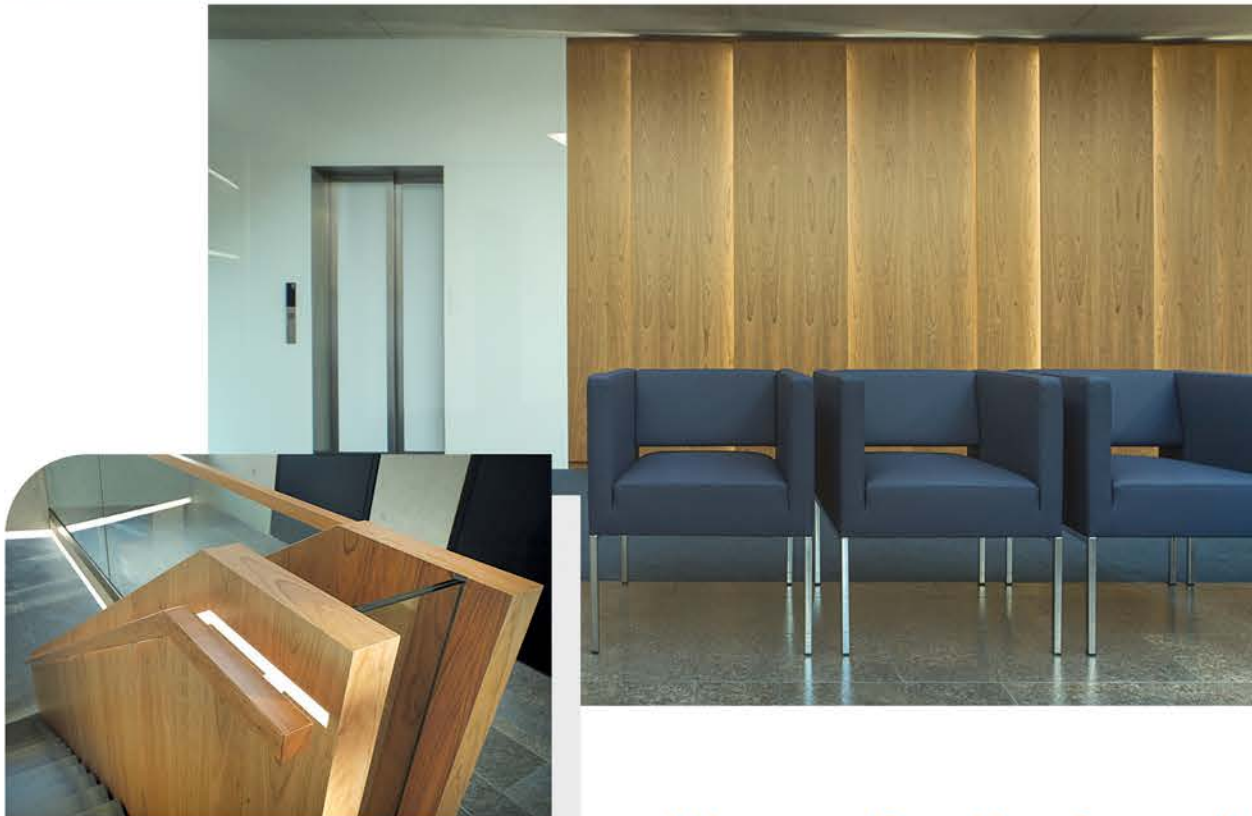


Micro Perforated Acoustic Wooden Panels

Micro-perforated acoustic wooden panels are specialized architectural and design elements that are designed to improve sound absorption and acoustic performance in interior spaces. Micro perforation has a different production technology compare to our regular acoustic panels.

The core MDF is drilled with bigger holes diameter while the surface is drilled with micro holes such as 0.5 mm 1 mm. Hence, it is difficult to see the holes from regular distance. The surface of the panels can be natural veneer, engineered veneer, laminate and lacquered painting. We have two basic options as below.





Micro perforation for walls



& ceilings



Acoustic Wood

Perfection of
woodworking

quality meets
craftsmanship at the site



Wall panels



Baffle panels



Square canopies



Acoustic fabric panels for interior acoustics and design

Seashell



Circle canopies



3D hexagons



Hexagon canopies



3D squares



Bevelled edge



One of the
best solutions
for
sound absorption

Wall panels

High density glass wool boards covered with acoustic fabric

Product Description: Front side of the high density glass wool panel is covered with acoustic fabric. The edge folding 5 cm to the back side.

Core Material: 95 kg/m³ high density glass wool panels' edges are hardened with paint and covered with acoustic fabric

Sizes: 600x600mm, 600x1200mm, 600x1800mm, 1200x1200 mm, 1200x1800 mm, 1200x2400 mm

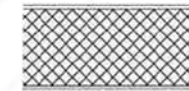
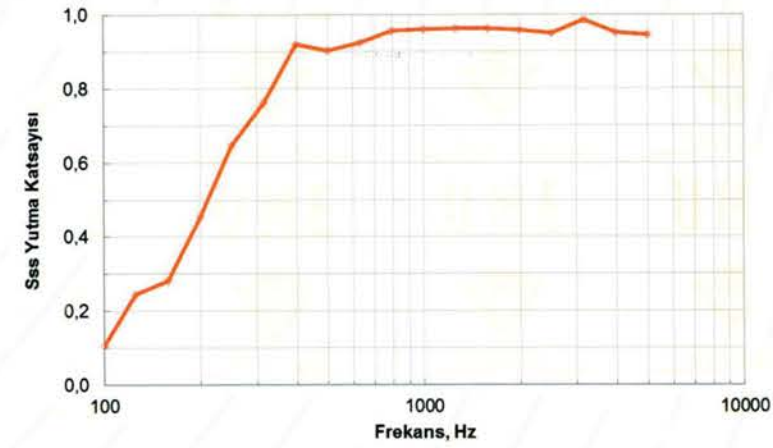
Thickness: 20 mm and 40 mm. Other thicknesses are also available upon request.

Edges: Square, beveled and round

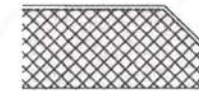
NRC: 0,95 - 1,00

Fire Class: B s1 d0, A2 s1 d0 according to UNE-ON 13501-1:2007

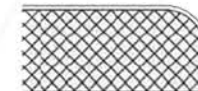
Installation: Adhesive, impaling clips, visible profile



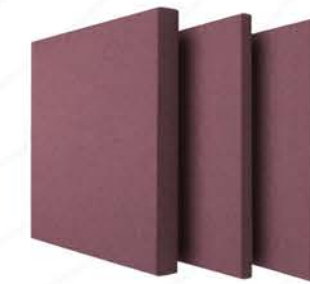
Square edge



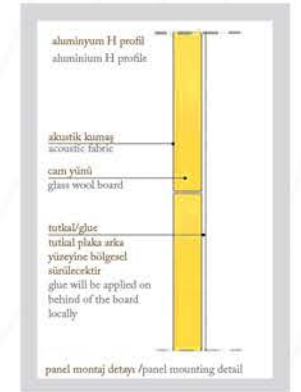
Beveled edge



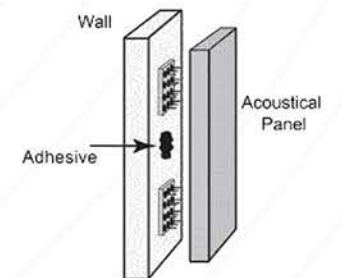
Round edge



Mounting directly to the wall with adhesive



Mounting with impaling clip and adhesive

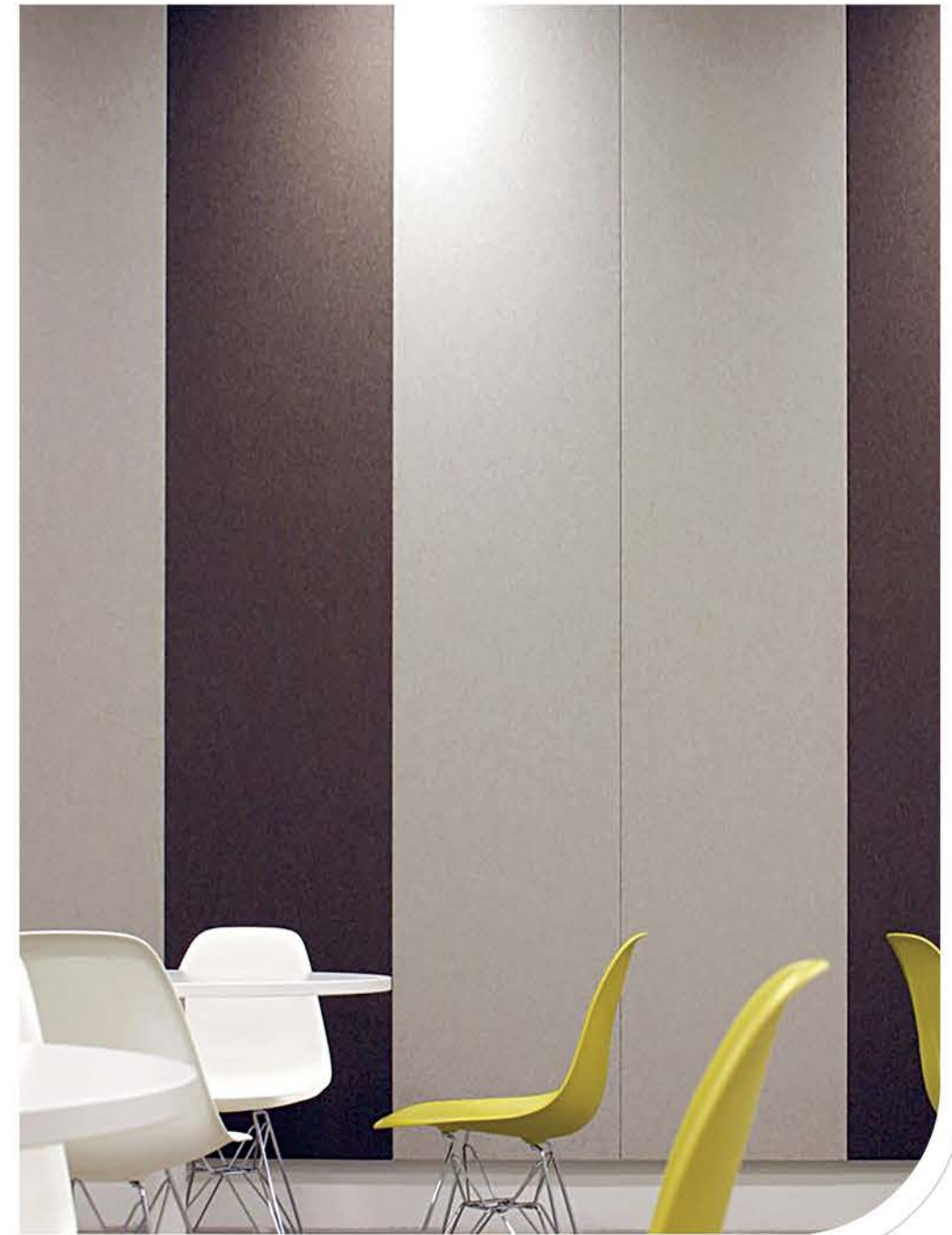




High impact
resistance
acoustic
fabric panels



The edges of our
acoustic fabric
panels are hardened
and framless.
We cover all the
edges with fabric
and fold it to back side.

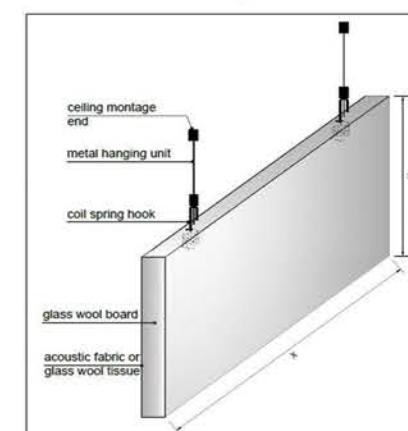
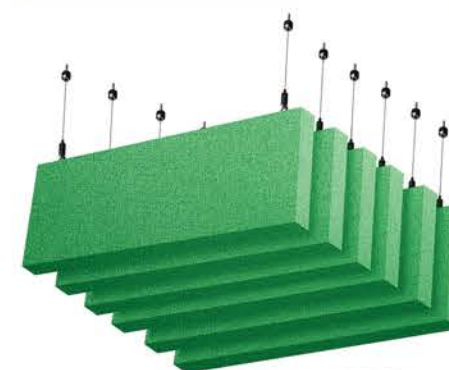
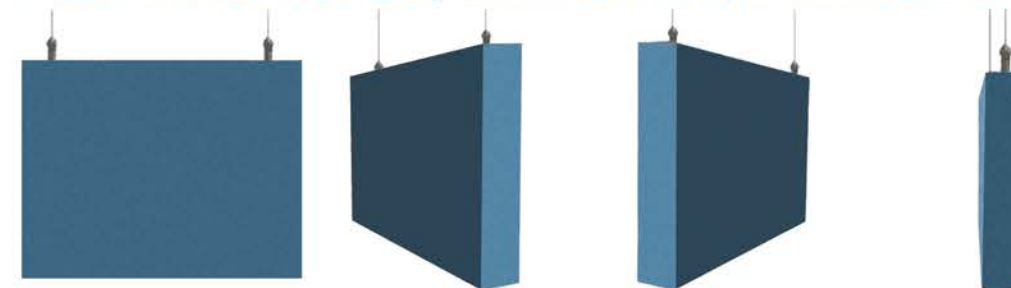


Fabric panels are most effective and practical solutions for
cafes and restaurants. They should be more considered.

Baffle panels



Colorful options for your ceiling Fabric covered, unframed, vertical baffles



Product Description: All sides of the high density glass wool panel is covered with acoustic fabric. The edges are clean cut.

Core Material: 95 kg/m³ high density glass wool panels' edges are hardened with special chemical and covered with acoustic fabric.

Sizes: 600x600 mm, 600x1200 mm, 600x1800 mm, 600x2400 mm, 400x1200 mm, 400x1800 mm, 400x2400 mm

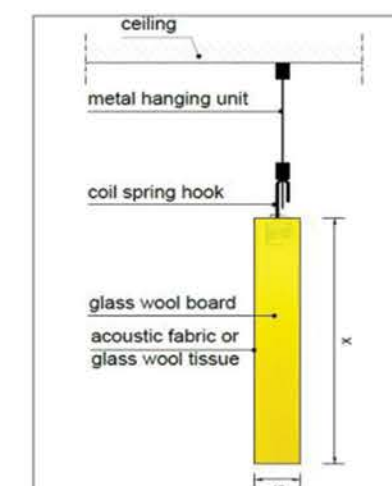
Thickness: Our most standard thickness is 40 mm. Other thicknesses are also available upon request.

Edges: Square, beveled and round

NRC: 0,95 - 1,00

Fire Class: B s1 d0, A2 s1 d0 according to UNE-ON 13501-1:2007

Installation: Suspension wire cable with spiral hook





New School Abu Dhabi



Clubsporium Fitness



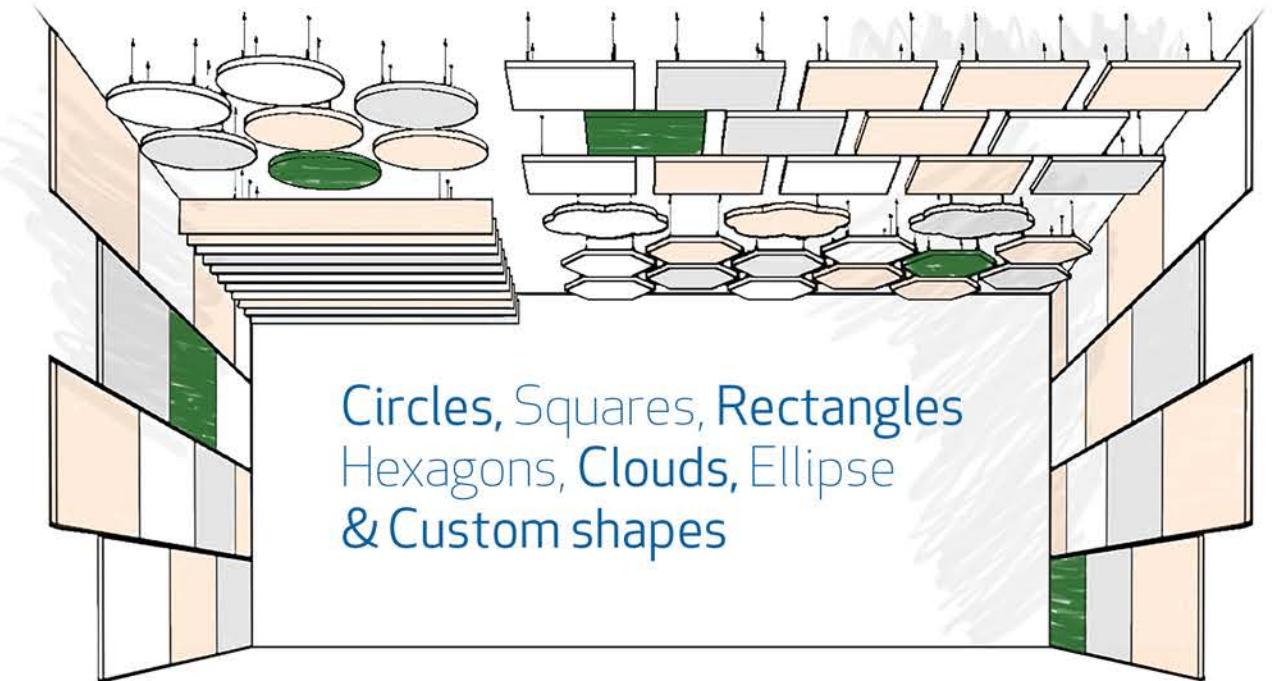
Lareks Yapı Showroom

Ceiling canopies



Effective acoustics for spaces where people live, work and learn

Acoustic, aesthetic and free-hanging ceiling units for effective sound absorption



Product Description: Visible side of high density glass wool panel is covered with acoustic fabric along with folding the fabric 5 cm to the back side

Core Material: 95 kg/m³ high density glass wool panels' edges are hardened with paint and covered with acoustic fabric.

Sizes: 600x600mm, 600x1200mm, 600x1800mm, 1200x1200mm, 1200x1800mm, 1200x2400mm,

Thickness: 40 mm. Other thicknesses are also available upon request.

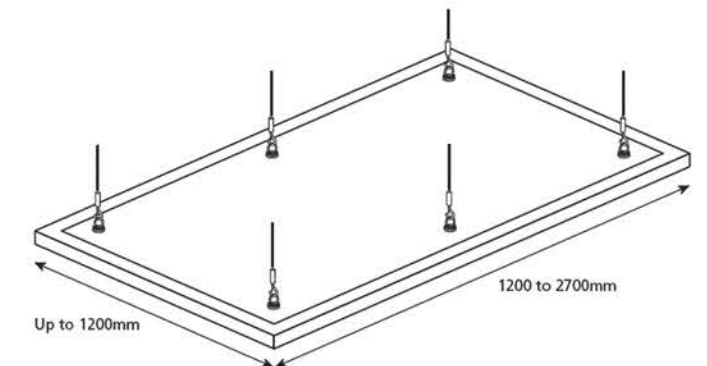
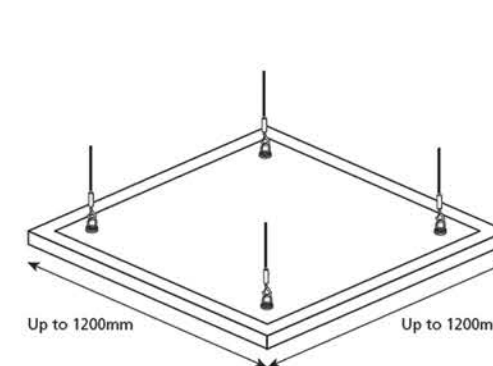
Edges: Square, bevelled and round

Shapes: Square, rectangle, circle, hexagon, cloud, ellipse

NRC: 0,95 - 1,00

Fire Class: B s1 d0, A2 s1 d0 according to UNE-ON 13501-1:2007

Installation: Suspension wire cable with spiral hook





Hexagons



Rectangles



Squares



Circles



Black painted squares and circles

- Superior acoustic performance
- Available in fabric & painted surface
- Wide range of different shapes
- Numerous colours
- Easily demountable

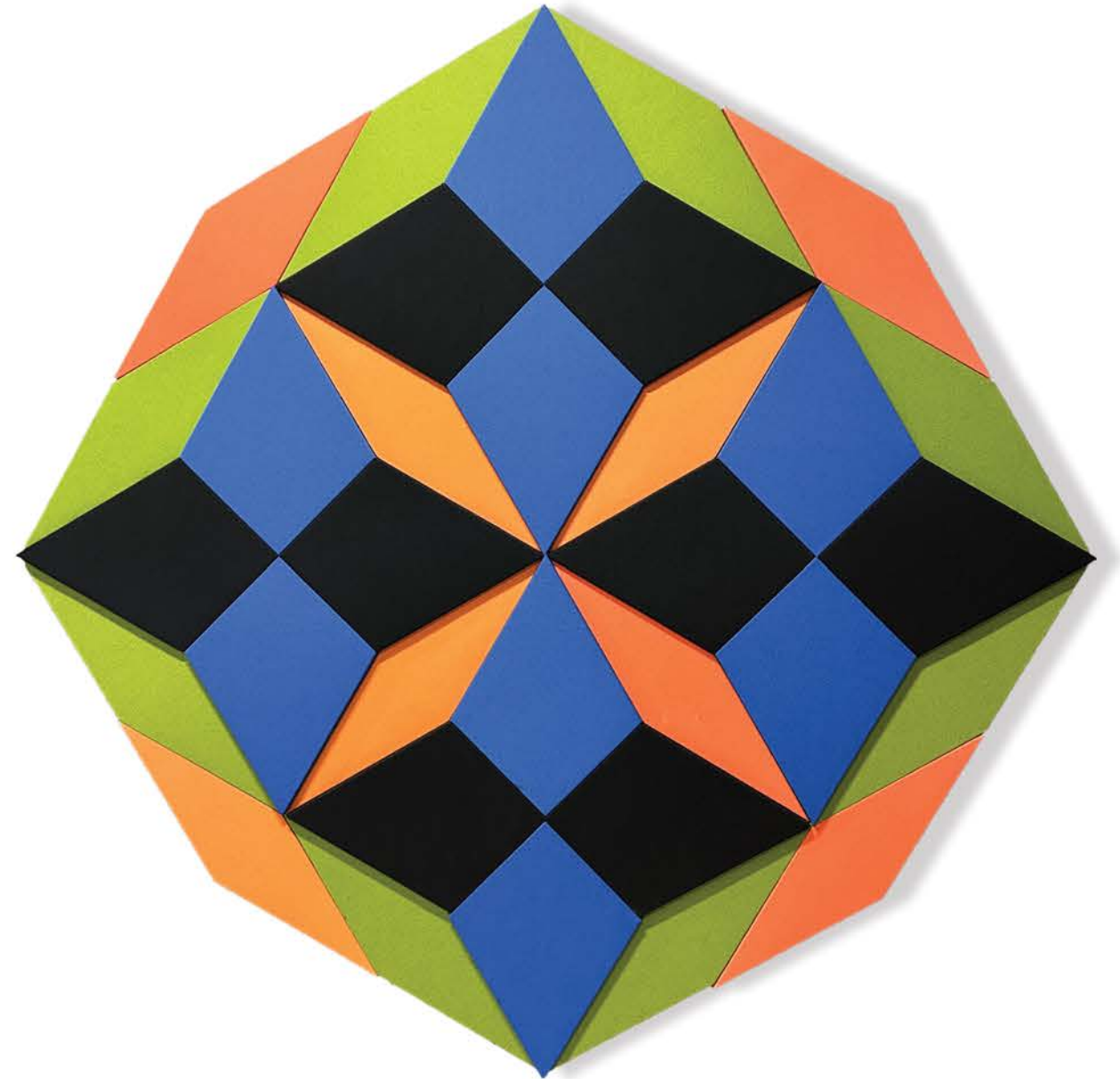




Hexagon canopies with a **special fabric** finish for the **Talent and Skills Center** in Sivas, Turkey

3D Acoustic Fabric Panels

Fabric covered
and custom-made
shapes with our
experience



Create **extraordinary spaces** and
provide the best **acoustic comfort**

Corner down



Corner up

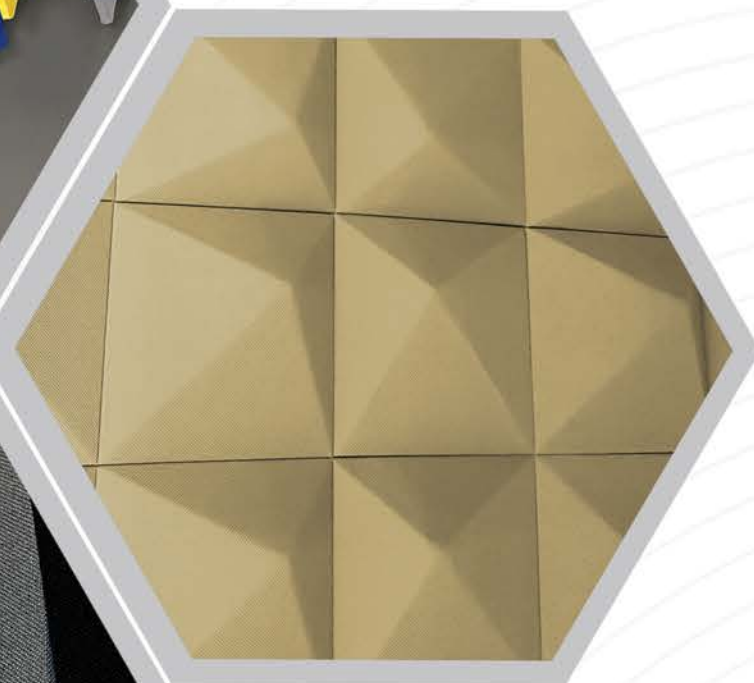


Hexagon 2040

Seashell



Square 2040



Pyramid

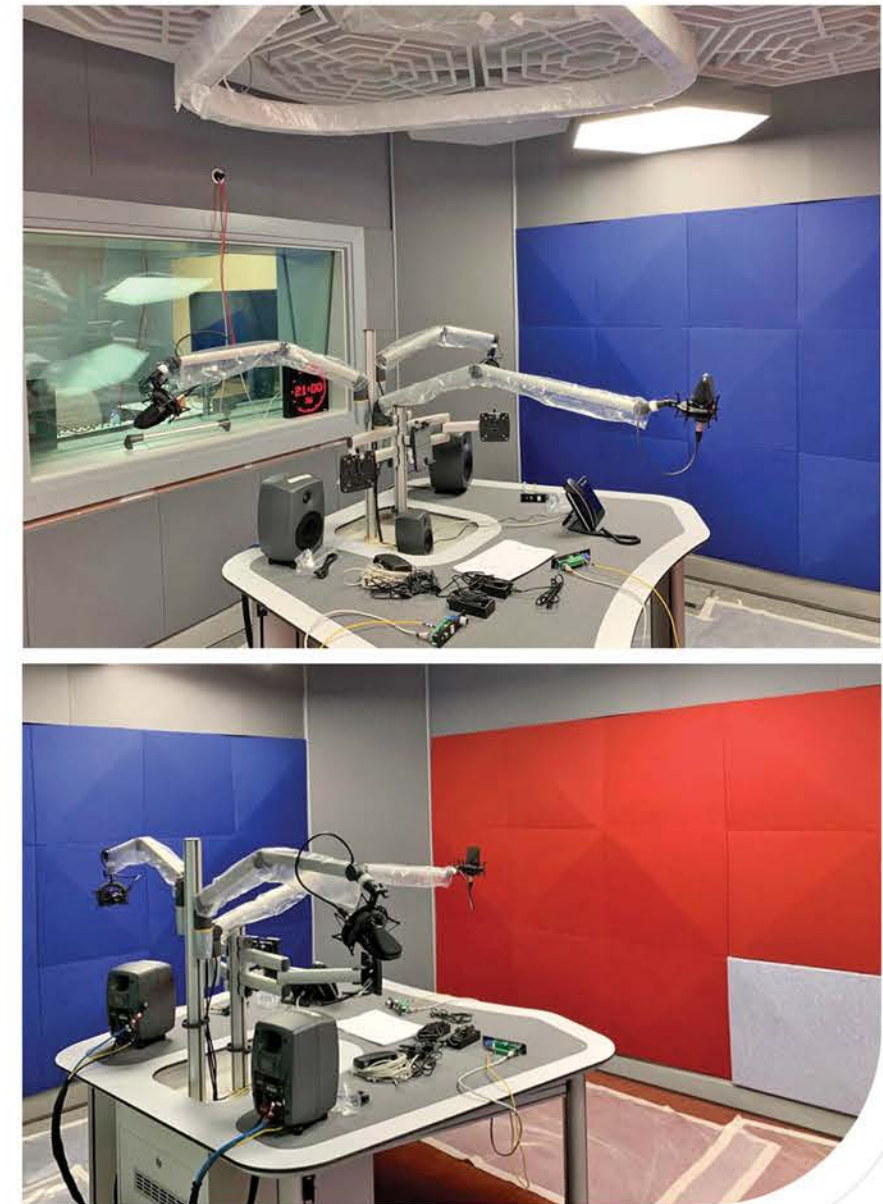
Customized 3d acoustic fabric panels.

We manufactured our fabric panels as per our client's design for their office.



Most Makina Enerji, İstanbul

Corner down 3d acoustic fabric panels in a radio studio



Turkuaz Radio Station, İstanbul



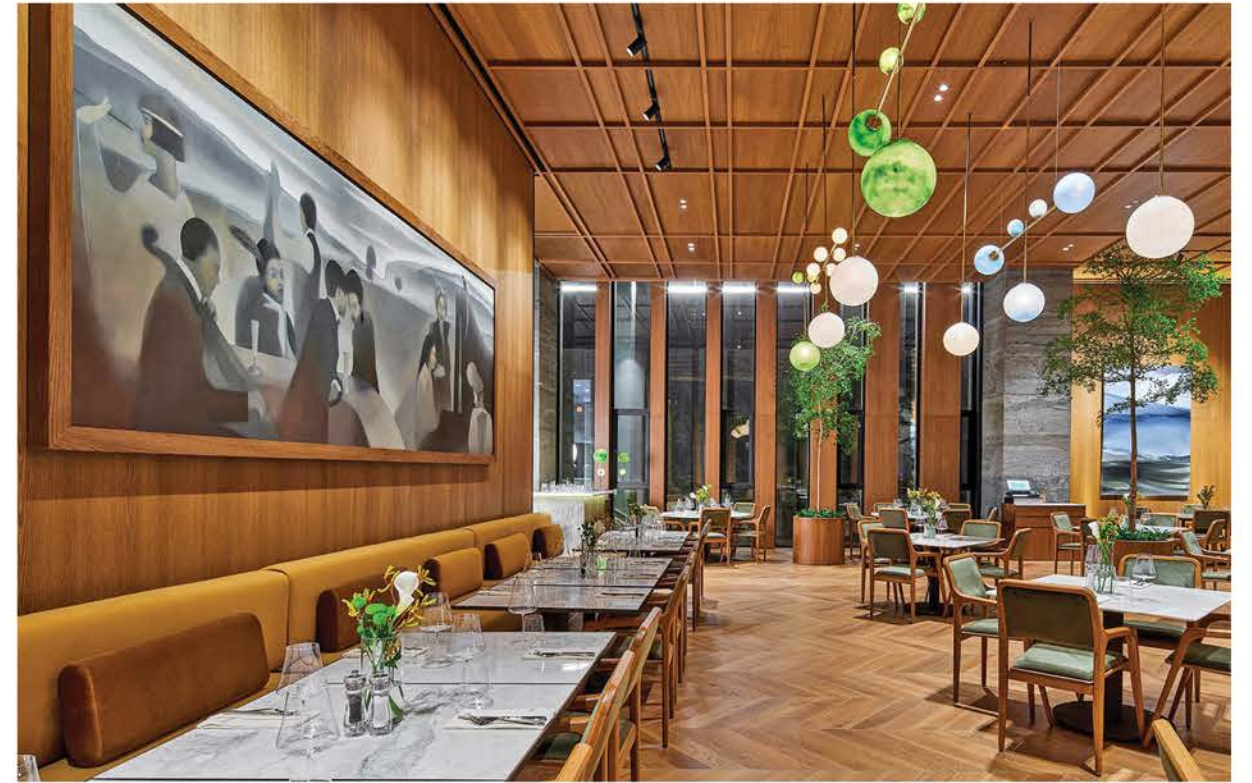
Acoustical touch
to your open spaces
with our circle
ceiling canopies.
Simple and attractive...



ATATÜRK CULTURAL CENTER

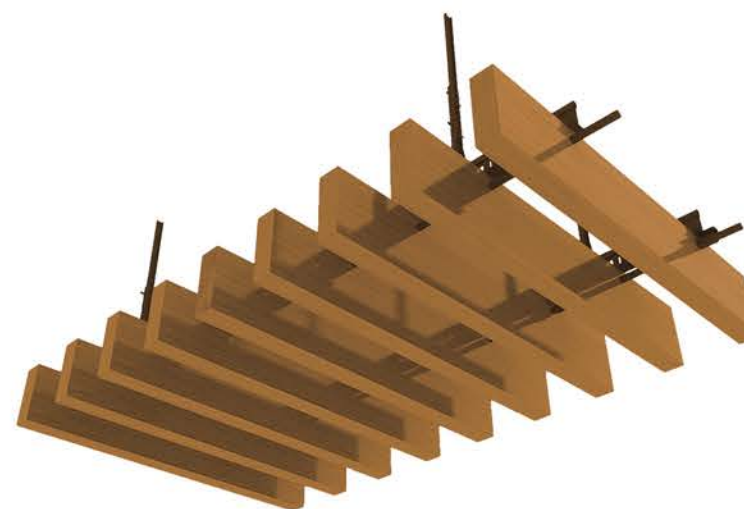


Atatürk Cultural Center





Wood Grille Ceiling



Wood grille ceiling panels are a popular architectural and design element that can add a touch of elegance, warmth, and natural beauty to a space. These panels typically consist of wooden slats or strips arranged in a grid or lattice pattern, creating a visually interesting and functional ceiling treatment.

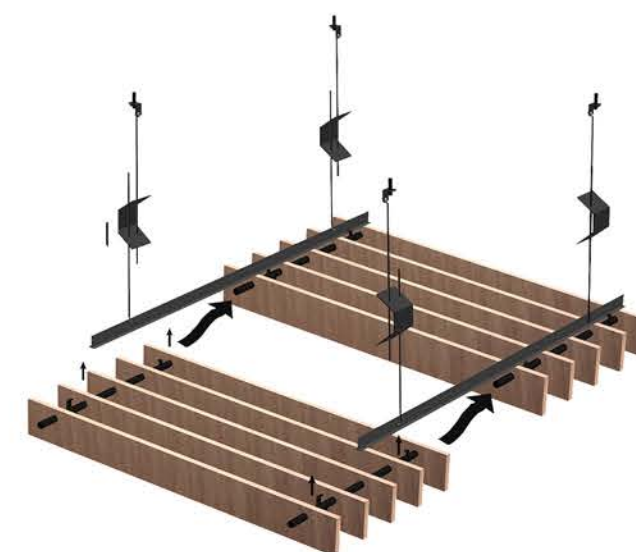
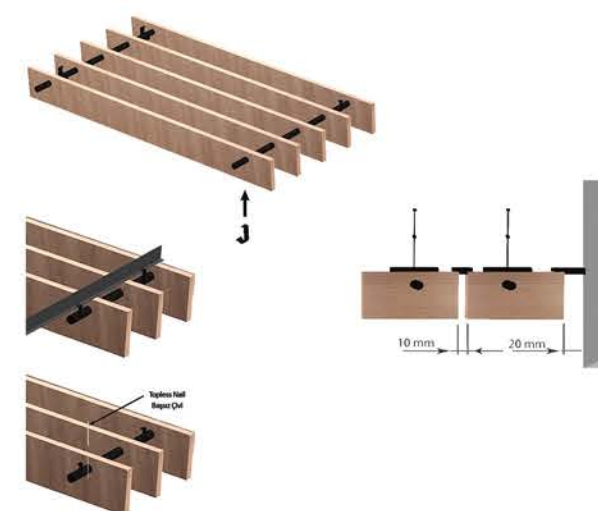
Raw Material:
MDF and solid wood.

Slat thickness:
18 mm, 20 mm, 40 mm

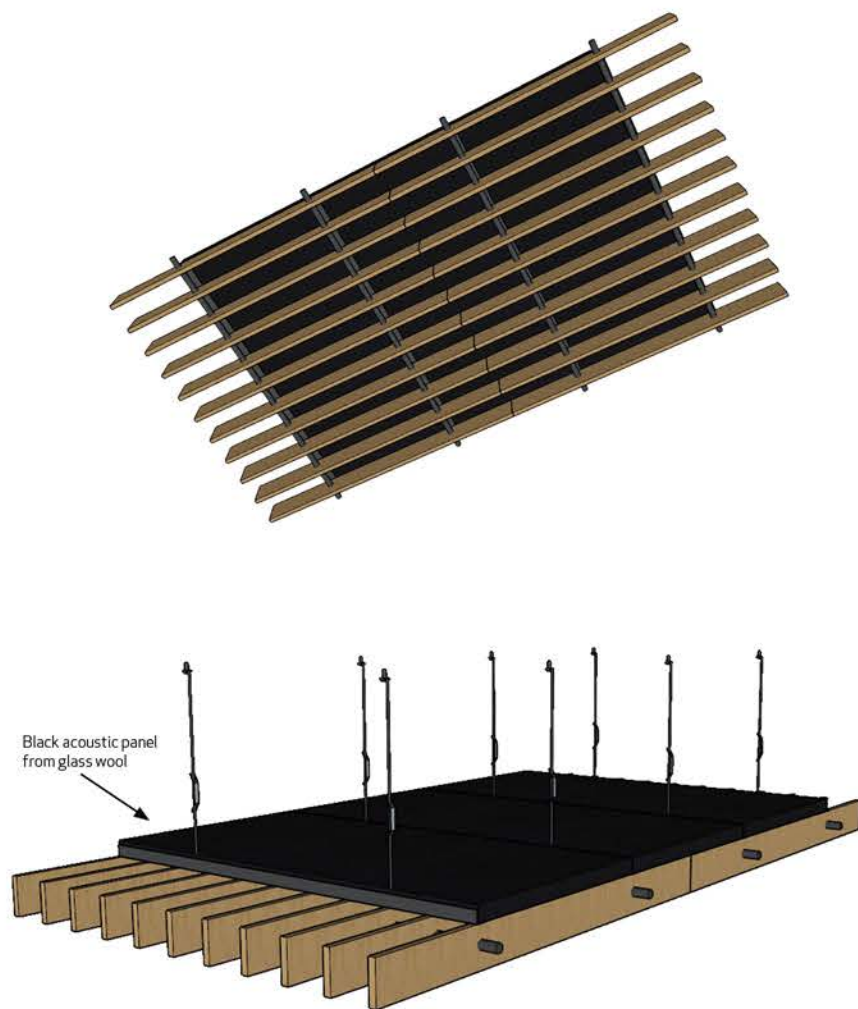
Slat height:
From 80 mm to 300 mm

Slat length:
1000 mm, 1200 mm, 1400 mm,
1800 mm, 2000 mm, 2400 mm, 2800 mm

Suspension:
With dowel and T grid



Wood grille ceiling panels can be a striking addition to a space, enhancing both its appearance and functionality. They are a versatile design element that can be used in a variety of settings, including residential and commercial spaces, and can contribute to a warm and inviting atmosphere.



Wood grilles with acoustic backing

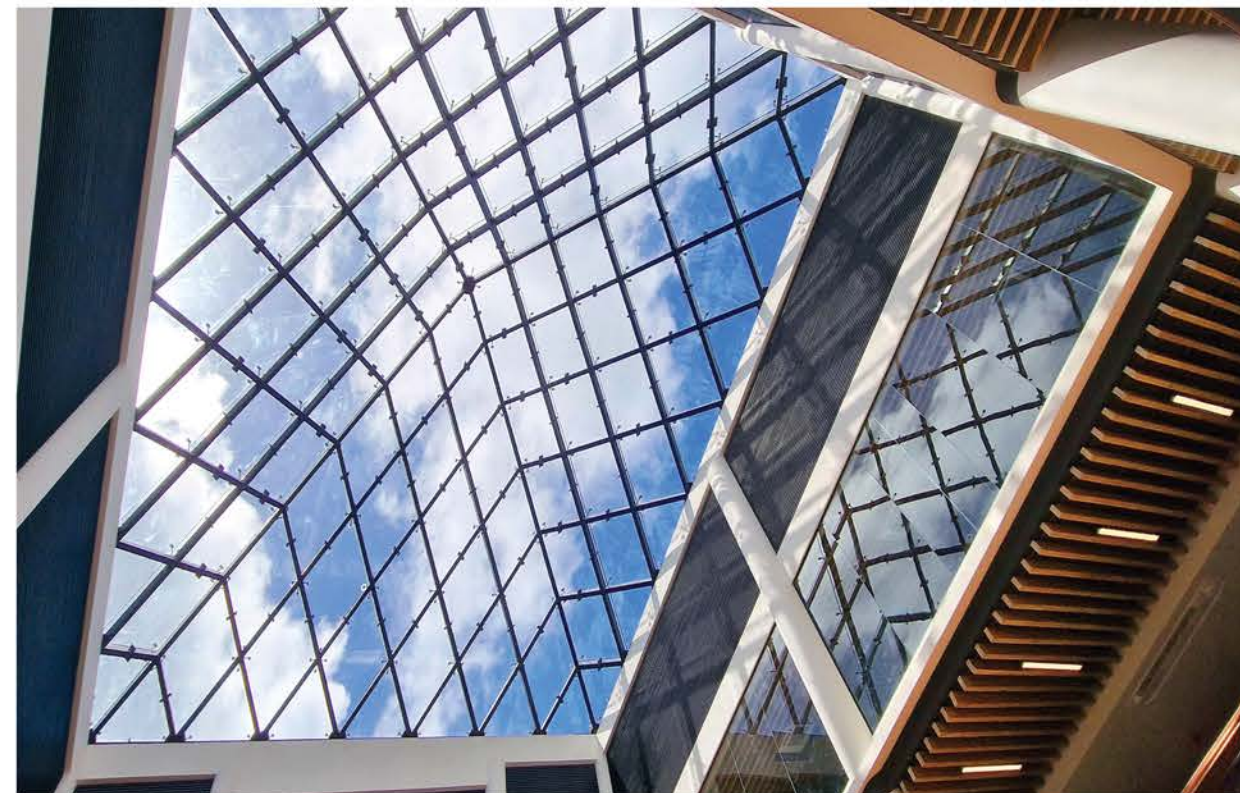
Our wood grille ceiling panels are also available with acoustic backing to improve acoustic value in the space. According to your space, ceiling dimensions and the design, high density **black acoustic glass wool** boards can be attached to the panels directly.



Ted College



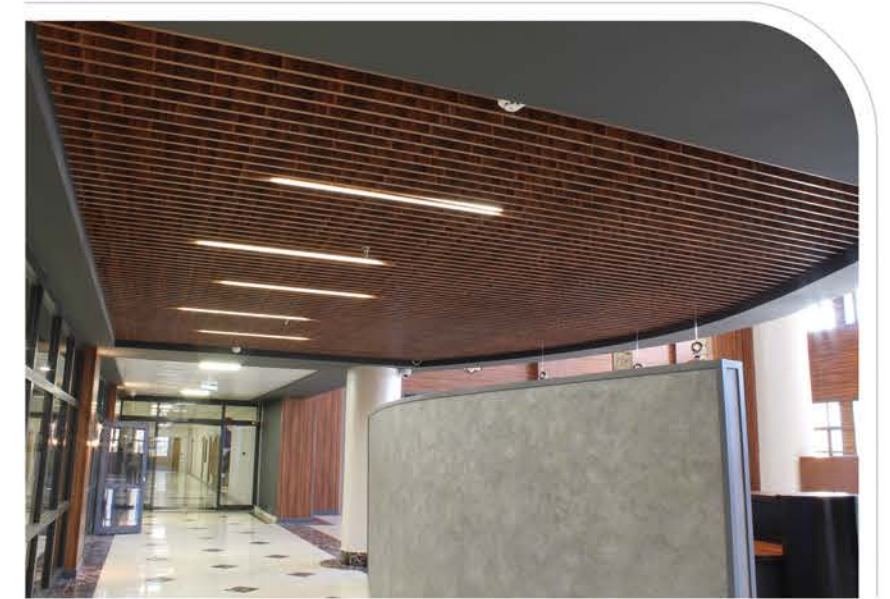
Wood grilles can be used also for the walls even for an auditorium. Panels should be used with acoustic backing panels.



Projects:
Renovation of Seychelles
National Library Building

Architecture:
Ahtime Architects

Contractor:
GICC

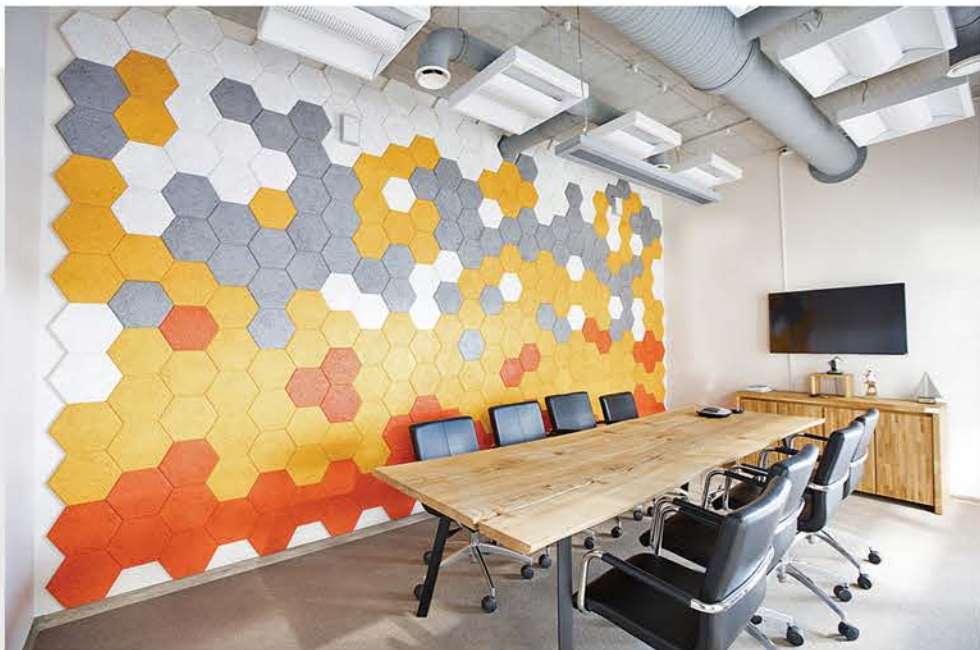


Governorship of Sivas
Republic of Turkey

The ceilings of main building of Governorship building fully decorated with our Wood Grille Ceiling panels. Besides grille panels, we decorated the walls with same color MDF.

Core material: MDF
Surface: Melamine

Wood Wool Cement Board for Interior Acoustic and Insulation



Antibacterial
Ecological

Moisture resistant
Impact resistant

High acoustic value
Thermal insulated



Technical Details

Wood wool panels are used in rooms with high requirements for acoustic comfort: theaters, cinemas, studios, restaurants, school and preschool institutions, sports complexes, shooting galleries, offices, parking lots, etc.

Composition

Wood 60%, Portland cement 39.8%, sodium silicate 0.2%

Fiber thickness

1 mm



1.5 mm



2 mm



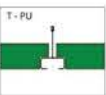
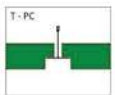
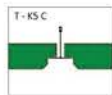
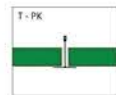
Panel Features

Sizes: 600x2400mm, 600x1200 mm,
600x600 mm and custom sizes
Thickness: 25 mm and 15 mm
Density: 450 kg/m³ (25 mm), 600 kg/m³
(15 mm)

Fire class: B s1 d0
Edge: Square, bevelled
Color: Natural
Painting: Available in Ral colors.
Can be painted to desired color

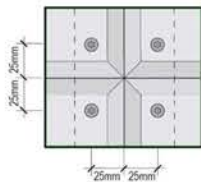
Ceiling Installation

Panels can be installed with T
Grid systems such as T24 and T15.
Panels edges can be made based on
desired T grid



Wall Installation

Panels can be installed on the
back structure with screws.
Then the screw head needs to be
painted the same color.



Acoustic Features

NRC: 0.70 Euroclass B

*It should be used with 5 cm thick, 50 kg/m³ density glass wool or rock wool board.



Cattia
Braşov, Romania



Business center,
technology transfer and
business incubator



Cattia Braşov
Acoustics, Aesthetic & Art



Tetra Pak
Budapest, Hungary