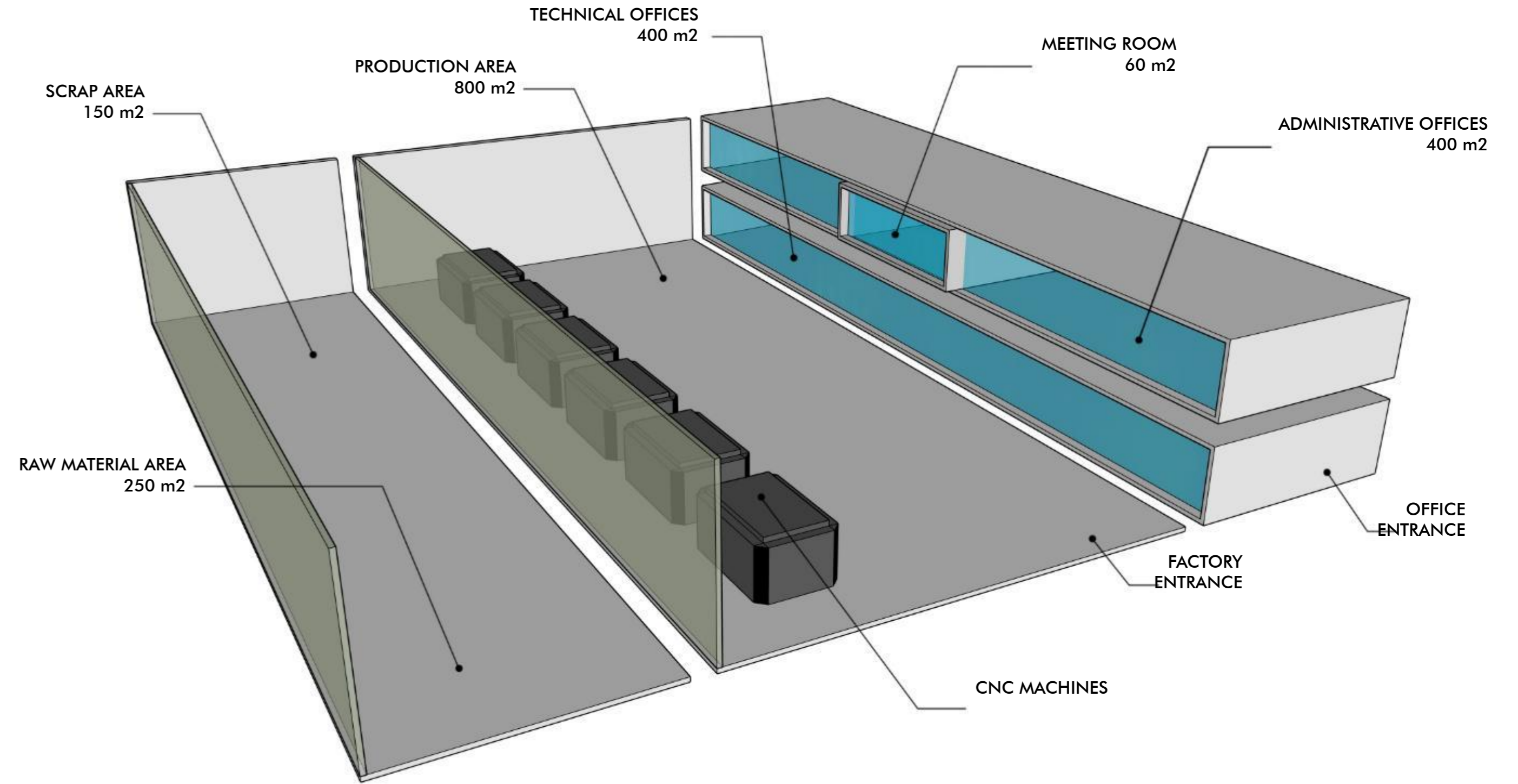


The logo consists of a blue parallelogram tilted to the right, containing the word "MECH" in white, bold, sans-serif capital letters. The parallelogram is layered over a black-outlined parallelogram of the same shape and orientation, which is further layered over a light gray-outlined parallelogram. The entire graphic is set against a white background with a large blue diagonal shape on the left side of the page.

MECH



METKAP
INDUSTRIAL PARK

www.metkap.com.tr



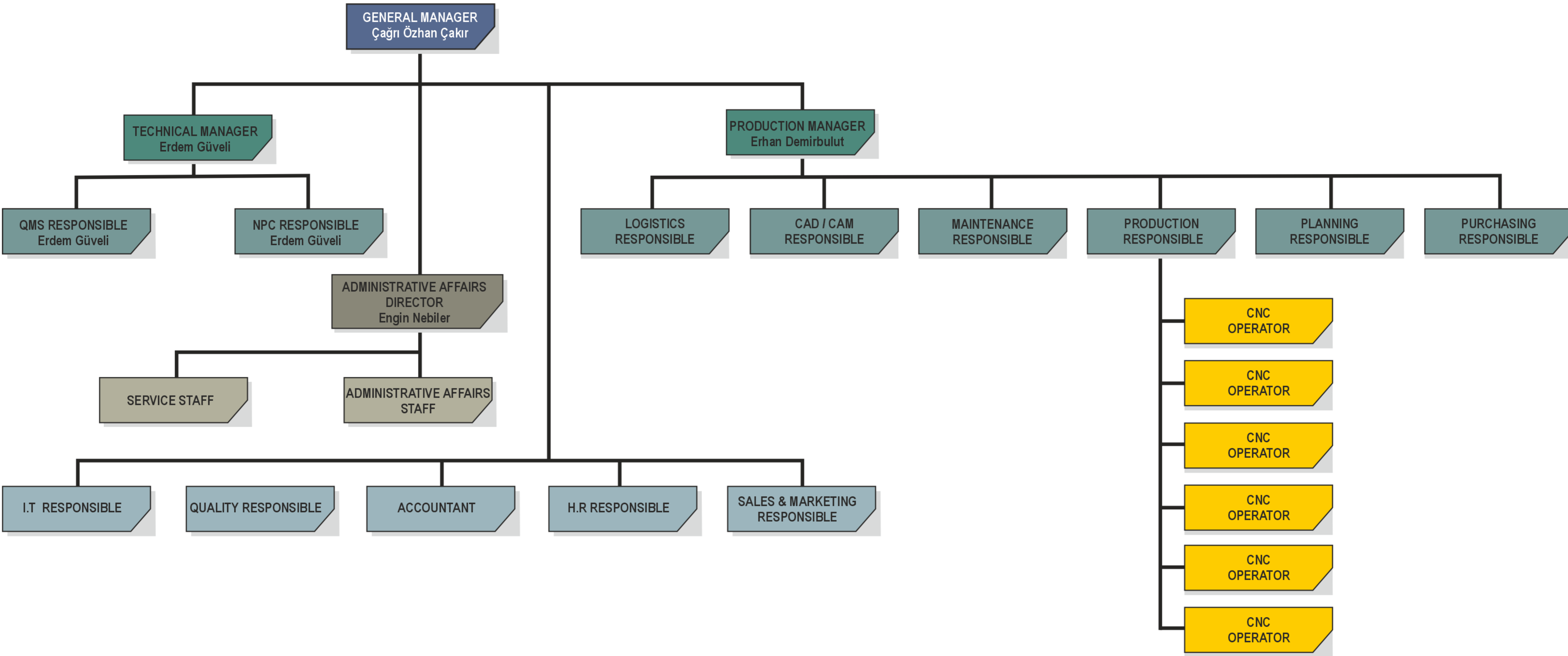
TEM HIGHWAY 10 Min.
E-5 12 Min.
KUZEY MARMARA HIGHWAY 15 Min.



İSTANBUL AIRPORT 30 Min.
AMBARLI PORT 35 Min.
YAVUZ SULTAN SELİM BRIDGE 35 Min.

TOTAL FACTORY AREA : 2.294 m²

ORGANIZATION CHART





DMF 300

Max. X-axis travel	: 3.000 mm
Max. Y-axis travel	: 800 mm
Max. Z-axis travel	: 850 mm
Max. workpiece diameter	: 1.050 mm
Max. workpiece height	: 900 mm
Max. workpiece weight	: 3.000 kg
Max. workpiece length	: 3.300 mm
Max. workpiece width	: 850 mm

Max. X-axis travel	: 750 mm
Max. Y-axis travel	: 650 mm
Max. Z-axis travel	: 560 mm
Max. workpiece diameter	: 840 mm
Max. workpiece height	: 500 mm
Max. workpiece weight	: 600 kg

DMU 75





Max. X-axis travel	: 650 mm
Max. Y-axis travel	: 520 mm
Max. Z-axis travel	: 475 mm
Max. workpiece diameter	: 630 mm
Max. workpiece height	: 600 mm
Max. workpiece weight	: 300 kg

DMU 50

Max. X-axis travel	: 750 mm
Max. Y-axis travel	: 600 mm
Max. Z-axis travel	: 520 mm
Max. workpiece diameter	: 800 mm
Max. workpiece height	: 560 mm
Max. workpiece weight	: 350 kg

CMX 70 U





Max. X-axis travel	: 455 mm
Max. Y-axis travel	: 210 mm
Max. Z-axis travel	: 800 mm
Max. workpiece diameter	: 430 mm
Max. workpiece length	: 800 mm
Max. bar diameter	: 65 mm

NTX 1000

Max. X-axis travel	: 260 mm
Max. Y-axis travel	: 100 mm
Max. Z-axis travel	: 1345 mm
Max. workpiece diameter	: 460 mm
Max. workpiece length	: 1255 mm
Max. bar diameter	: 90 mm

NLX 2500



NLX 2500



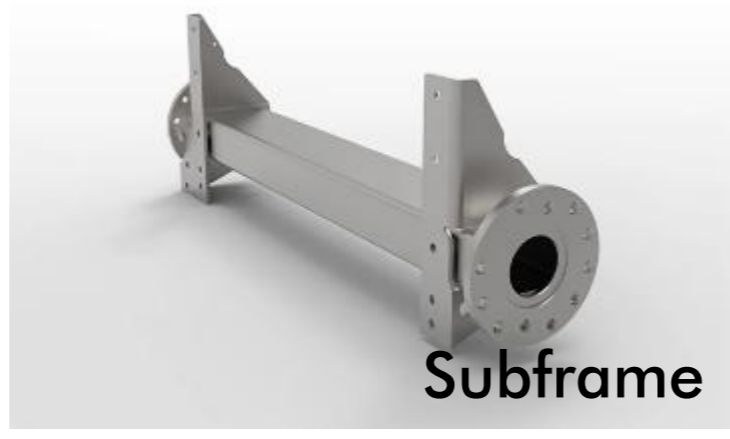
Flywheel

NTX 1000



Face Mill

DMF 300



Subframe

DMU 75



Rim

DMU 50



Belt Fastener

CMX 70



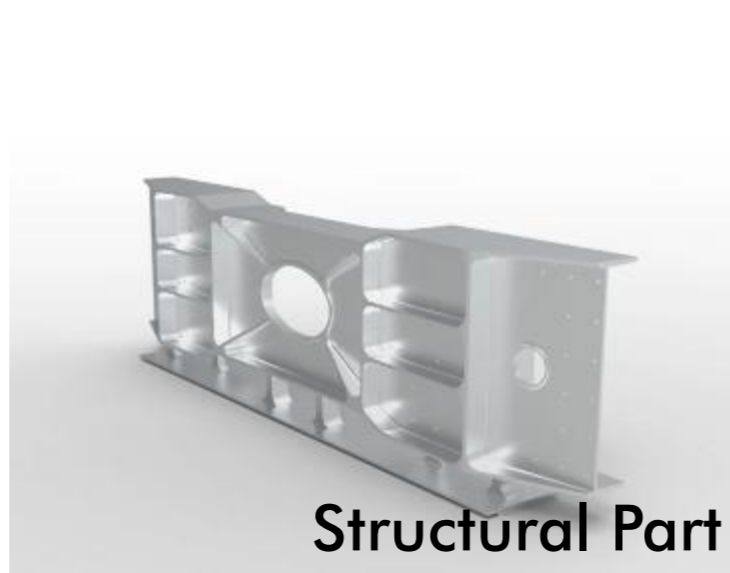
Wind Breaker



Drive Shaft



Landing Gear



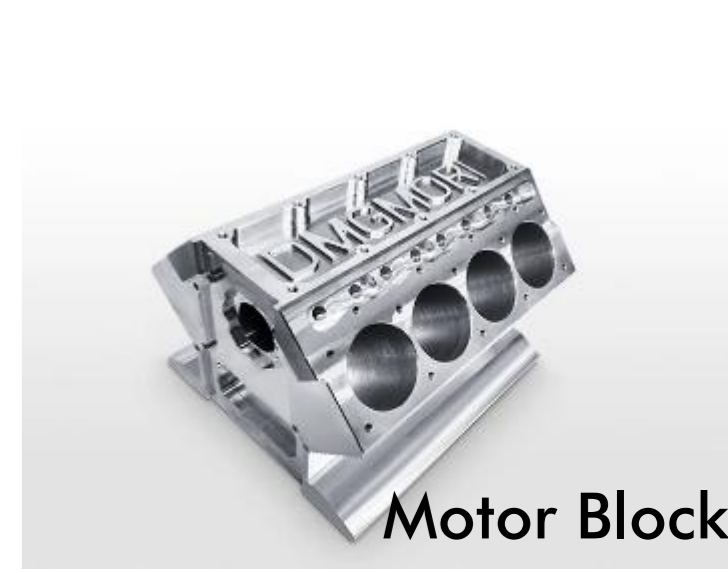
Structural Part



Tyre Mould



Pump Housing



Motor Block



Port Block



Tool Holder



Housing



Radiator grill



Milling Head



Milling Head



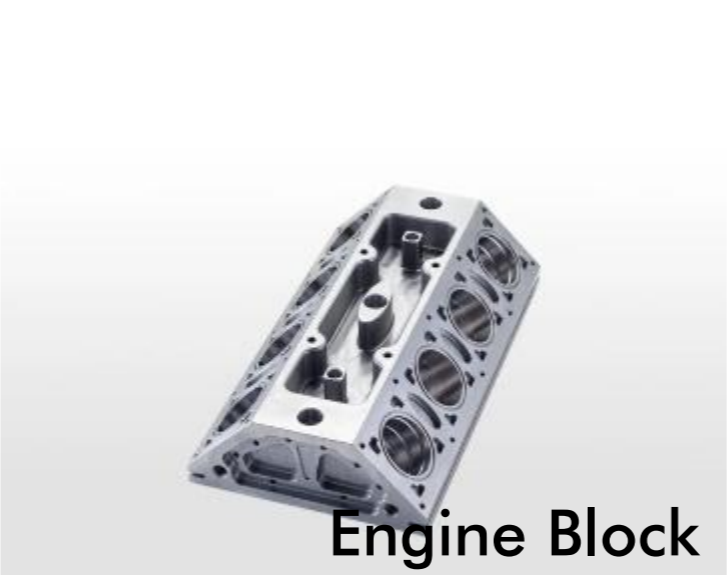
Flange



Turbine Blade



Engineering



Engine Block



Hydraulic Component



Main Shaft Support

MICROSET UNO AUTOFOCUS 20 / 40

Spindle runout	: 2μ
Repeatability	: ± 2 μ
Max. tool diameter / X axis	: 400 mm
Max. point caliper tool diameter / X axis	: 100 mm
Max. tool length / Z axis	: 400 mm
Max. tool weight	: 30 k



POWER – CLAMP PLUS – i4.0



Solid carbide and HSS tools	: Tool diameter 3-32 mm
Max. Length of shrink fit Chuck	: 510 mm
Dimensions	: 840x600x970 mm
Tool adaptor	: SK 40, HSKA-63
Power	: 13 kW

CRYSTA APEX V 9166

Measuring Range / X	: 900 mm
Measuring Range / Y	: 1600 mm
Measuring Range / Z	: 600 mm
Resolution	: 0.0001 mm
Workpiece Loading Area	: 1080x2320 mm
Workpiece Maximum height	: 800 mm
Workpiece Maximum weight	: 1500 kg
Accuracy	: SP25M / $1,7\mu+3 L/1000$
Repeatability	: $1,3\mu$



LH-600F LINEAR HEIGHT GAGE



Measuring range (Stroke)	: 0 to 977 mm (600 mm)
Resolution	: 0.0001/ 0.001/ 0.01/ 0.1 mm
Accuracy (at 20 °C)	
Indication accuracy*8	: $\pm (1.1 + 0.6L / 600) \mu\text{m}$
Repeatability*8	: Plane: $0.4 \mu\text{m} (2 \sigma)$, Hole: $0.9 \mu\text{m} (2 \sigma)$
Perpendicularity (forward and backward)*9	: $5 \mu\text{m}$ (after compensation)
Straightness (forward and backward)*9	: $4 \mu\text{m}$ (mechanical accuracy)
Operating temperature / humidity ranges	: 5 to 40 °C/ 20 to 80% RH (non-condensing)
Dimensions (WxDxH)	: 238 (W) × 492 (D) × 996 (H) mm



Our work on quality management requirements with **ZRN Technologies** consulting firm continues. After our system is completed, the audit process will be initiated for certification from **Bureau Veritas**.

<https://www.zrnteknoloji.com/>
<https://group.bureauveritas.com/>



Location

Hadımköy Mahallesi Dr.Mithat Martı Caddesi METKAP Sanayi Sitesi Dış kapı No : 30-32 İç kapı No: 1-2-3-4 Arnavutköy / İstanbul / Türkiye