



## PRODUCT CATALOG 2024



**Merkez:** Aydıntepe Mah. 100. Yılcad.  
Vural Sk. No:9/1 Tuzla / İSTANBUL  
**Fabrika:**Taşköprü Merkez Mah.  
Çağdaş Sk. No:4/A Çiftlikköy / YALOVA

0 (216) 493 65 69

info@cleanroomozyapi.com



# About Us

Founded in 2008, ÖTS Cleanroom Systems is one of the leading companies that increase our country's competitiveness around the world, including life sciences fields that have a direct impact on public health, such as the pharmaceutical, biotechnology, food, cosmetics and medical device industries and clinical laboratories, as well as the defense industry, automotive and white goods industry. Engineering on cleanroom systems that meet the special production requirements of basic industries. It specializes in an approach that combines architecture and architecture.



ÖTS Cleanroom Systems specializes in crafting bespoke cleanroom solutions tailored to the unique production demands of various industries. Our distinctive approach seamlessly integrates engineering and architectural expertise, ensuring optimal performance and functionality in every cleanroom we create.

## “ÖTS Cleanroom Systems: Your Partner in Precision Manufacturing”

ÖTS Cleanroom Systems is a premier provider of comprehensive cleanroom solutions, encompassing research and development, production, and installation. They prioritize delivering high-quality processes and materials at optimal cost, adhering to stringent international standards like ISO9001, ISO14001, and ISO45001 – GMP - CE - EN 13501 -FM . As an integrated, turnkey project manufacturer, ÖTS provides a seamless experience from initial design to final installation.

## “Experience and Innovation: Supporting Diverse Needs with Modular Solutions”

ÖTS Cleanroom Systems boasts a team of experienced engineers and architects with a proven track record of successful projects. They are a reliable partner for diverse industries, offering modular cleanroom solutions that meet the exacting pollution control requirements of BSL-2/3/4 laboratories and other demanding environments.

Produced in our 3,100 m2 ISO9001-certified factory in Yalova, our modular cleanrooms deliver high-performance sterility and safety while exceeding international standards. Their innovative design saves time and energy during installation, ensuring a seamless transition to your high-tech facility.





**OTS** | CLEANROOM  
SYSTEMS

**"We believe in a brighter future powered by groundbreaking technology. By providing our customers with cutting-edge cleanrooms, we empower them to develop innovative products and services that enhance the quality of modern life."**

**"Your cleanroom project's safety is our top priority."**

**"Unmatched Expertise, Endless Potential"**

At ÖTS Cleanroom Systems, we have unwavering confidence in our team's capabilities. We foster an environment that empowers our employees to reach their full potential, constantly pushing boundaries in pursuit of the highest quality standards. This dedication to excellence allows us to deliver projects efficiently, pragmatically, and on schedule. We're focused on sustainable growth, maximizing profitability while remaining environmentally conscious.



# Project Flow Chart: Creating a Cleanroom Solution

## 1 CREATING A PROJECT CONCEPT

We begin with the development of a strong project concept. For beginner projects, a good starting point is focusing on visual preparation and presentation. This allows you to create a compelling vision for your project without getting bogged down in the technical details.

## 2 DESIGN AND 3D VISUALIZATION

Once the concept is established, we move into the design and visualization phase. Here, our skilled team will create detailed 3D visuals, plan layouts, section drawings, and detail drawings. We will also develop a 360° presentation to give you a comprehensive understanding of how your project will look and function.

## 3 CUSTOMER CONFIRMATION AND ORDERING

After finalizing the design and receiving your approval, we will submit the complete project proposal for your confirmation. Once you are satisfied, we will move forward with the ordering process.

## 4 PRODUCTION PHASE

Our production phase combines advanced technology with the expertise of our talented and experienced workforce. This ensures the continuous, high-quality manufacturing of your chosen cleanroom solution.

## 5 TRANSPORT PHASE

We understand the importance of timely and safe delivery. We will create a customized delivery plan to meet your specific project needs and ensure your cleanroom solution arrives swiftly and securely.

## 6 PRODUCT INSTALLATION PHASE

Our simple and modular solutions are designed for quick and efficient installation. This minimizes downtime and allows you to begin using your new cleanroom as soon as possible.

## 7 PRODUCT USAGE PHASE

Once your project is complete, we are still here to support you. We will provide you with all the necessary documentation, including project transfer data, operation manuals, and maintenance guides, to ensure you get the most out of your cleanroom solution.

## 8 DELIVERY PHASE OF THE FIELD

Our service doesn't end with project completion. We offer comprehensive warranty coverage and ongoing support to ensure your cleanroom solution continues to perform at its best for years to come.

# References

# Certificates

 <b>SANDOZ</b> SANDOZ SNTK HAMMADE TUZLA	 <b>SANDOZ</b> SANDOZ GEBZE 1	 <b>SANDOZ</b> SANDOZ GEBZE 2	
 <b>bilim İLAÇ</b> BİLİM İLAÇ KASIMPAŞA	 <b>bilim İLAÇ</b> BİLİM İLAÇ GEBZE	 <b>bilim İLAÇ</b> BİLİM İLAÇ ÇERKEZKÖY	
 <b>Kopas KOZMETİK</b> KOPAS KOZMETİK A.Ş.	 <b>DEVA</b> DEVA İLAÇ ÇERKEZKÖY	 <b>DEVA</b> DEVA İLAÇ KARTEPE	 <b>Biofarma</b> BIOFARMA İLAÇ SULTANBEYLİ
 <b>Santa FARMA</b> SANTA FARMA İLAÇ	 <b>İLKO</b> İLAÇ SANAYİ VE TİCARET A.Ş. İLKO İLAÇ	 <b>ATABAY</b> İLAÇ SANAYİ VE TİCARET A.Ş. ATABAY KİMYA DİLOVASI	 <b>ATABAY</b> İLAÇ SANAYİ VE TİCARET A.Ş. ATABAY KİMYA ACIBADEM
 <b>BERKO İLAÇ</b> BERKO İLAÇ KİMYA SULTANBEYLİ	 <b>MY FARMA</b> İLAÇ SANAYİ VE TİCARET A.Ş. MY FARMA İLAÇ TUZLA	 <b>DOKUZ EYLÜL ÜNİVERSİTESİ İZMİR</b>	 <b>Delphi</b> DELPI OTOMOTİV İZMİR
 <b>Mustafa Nevzat</b> MUSTAFA NEVZAT İLAÇ ŞEKERPİNAR	 <b>Mustafa Nevzat</b> MUSTAFA NEVZAT İLAÇ YENİBOSNA	 <b>NOVARTIS</b> NOVARTIS İLAÇ KURTKÖY	 <b>GILDA</b> İLAÇ & KOZMETİK GILDA İLAÇ KOZMETİK TUZLA
 <b>Eczacıbaşı   monrol</b> ECZACIBAŞI MONROL NÜK. ÜRÜN A.Ş.	 <b>GEBZE TÜBİTAK YERLEŞKESİ</b>	 <b>Dünyagöz</b> DÜNYA GÖZ HASTANESİ	 <b>ALKALOID SKOPJE</b> ALKALOIDLER İLAÇ BOLVADİN
 <b>QVIS</b> İLAÇ SANAYİ VE TİC. A.Ş. AVIS İLAÇ 1 TUZLA	 <b>QVIS</b> İLAÇ SANAYİ VE TİC. A.Ş. AVIS İLAÇ 2 TUZLA	 <b>Dia Pro</b> Tıbbi Ürünler Sanayi ve Ticaret A.Ş. DIAPRO TIBBİ ÜRÜNLER	 <b>TURGUT İLAÇLARI</b> TURGUT İLAÇ
 <b>OZON İLAÇ</b> OZON İLAÇ ANKARA	 <b>petroyağ</b> LUBRİKANTLAR PERTROYAĞ İZMİR	 <b>GENSENTA</b> GENSENTA İSTANBUL	 <b>genveon</b> GENVEON KOCAELİ
 <b>POLİFARMA</b> POLİFARMA İLAÇ ÇORLU	 <b>avrupa implant</b> AVRUPA İMPLANT BAŞAKŞEHİR	 <b>sanofi</b> SANOFİ İLAÇ	 <b>EAE</b> ELEKTRİK İSTANBUL



ISO9001



ISO14001



ISO45001



ISO10002



GMP



CE



EN13501



FM

# Systems

## Systems

- SHEET METAL PANEL SYSTEMS
- HPL PANEL SYSTEMS
- GLASS PANEL SYSTEMS
- STAINLESS PANEL SYSTEMS
- MODULAR CEILING SYSTEMS
- WALKABLE CEILING SYSTEMS
- SINGLE DOUBLE DOOR SYSTEMS
- AUTOMATIC DOOR SYSTEMS
- PASSBOX SYSTEMS
- VERTICAL / HORIZONTAL PASS SYSTEMS
- GROUND EPOXY APPLICATION
- GROUND PHARMA TERRAZO APPLICATION
- MODULAR SYSTEM COMBINING ELEMENTS
- CONNECTION DETAIL PROFILES

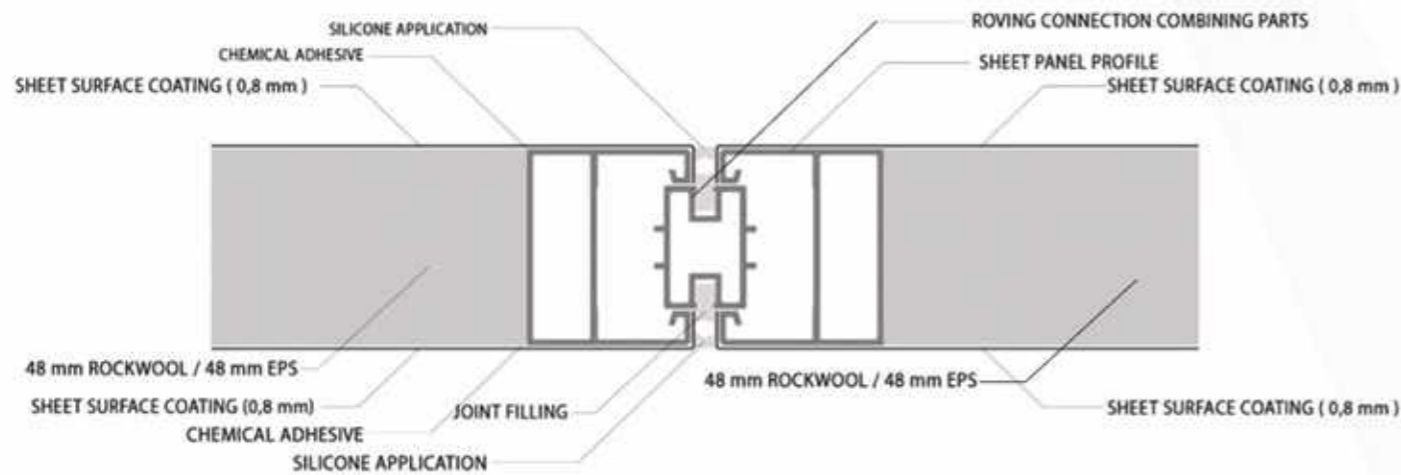


# PANEL SYSTEMS

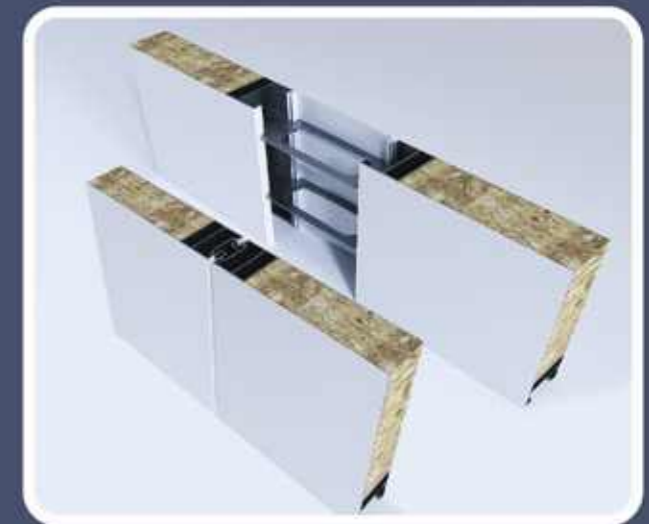
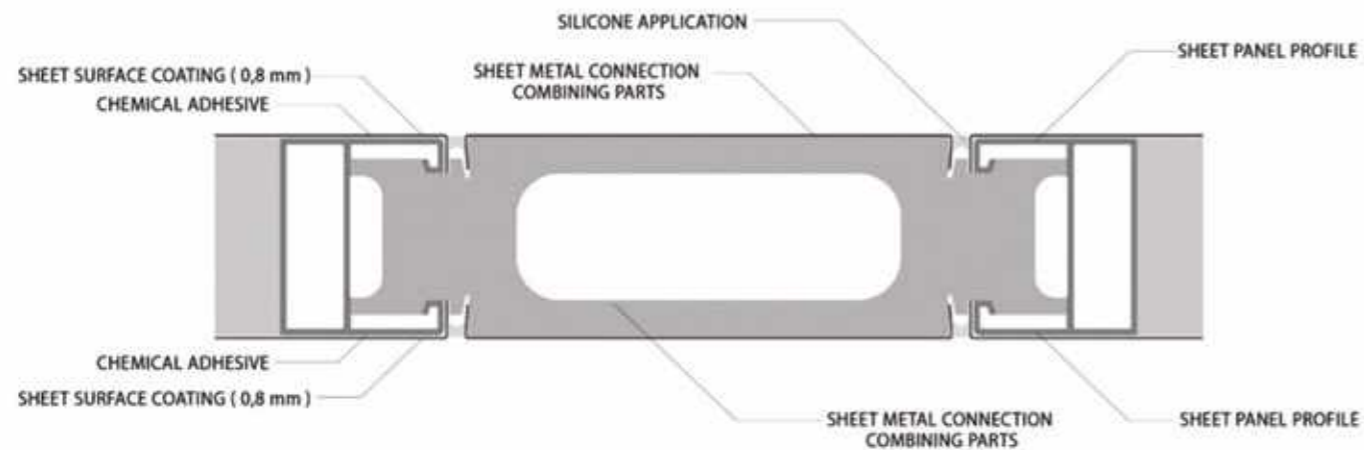
## SHEET PANEL SYSTEM

- 50 mm Thick
- Double Surface 0.8 mm PVDF Prepainted Sheet Coating
- Four Sides Specially Manufactured Aluminum Frame
- Inner Filling Material Rock wool 120/M3 Kg / EPS
- Special Cap System Connection Apparatus (Electrical Cable and Automation)
- A1 Fire Resistant
- Antibacterial
- Modular Easy Installation and Complement, Integrative Aluminum Accessories
- Easy to Clean Known Surface
- Complies with ISO, GMP and FDA Standards

SHEET PANEL / ROVING PROFILE / SHEET PANEL



SHEET PANEL / CAP / SHEET PANEL



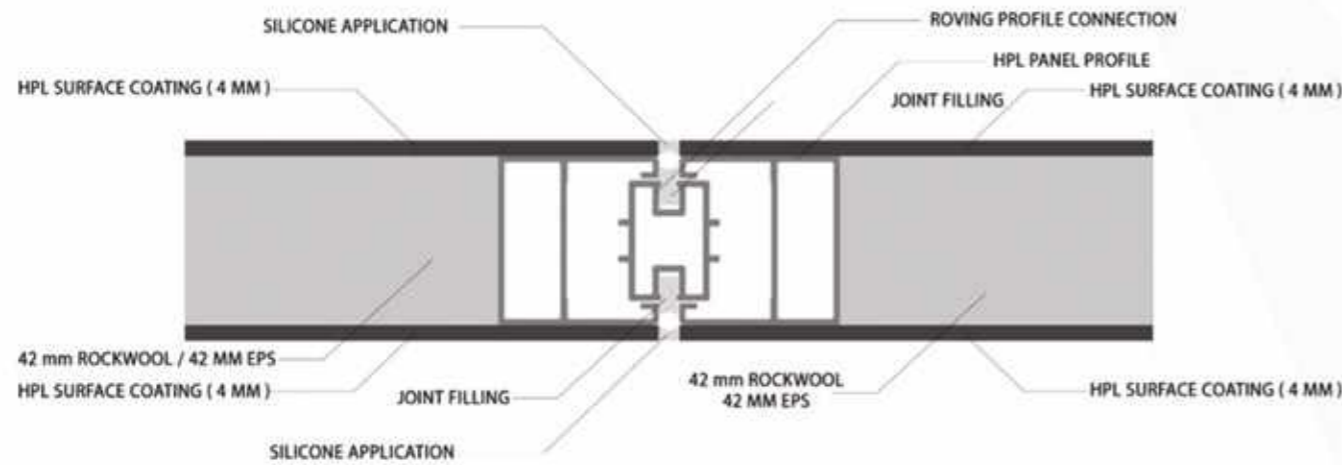


## PANEL SYSTEMS

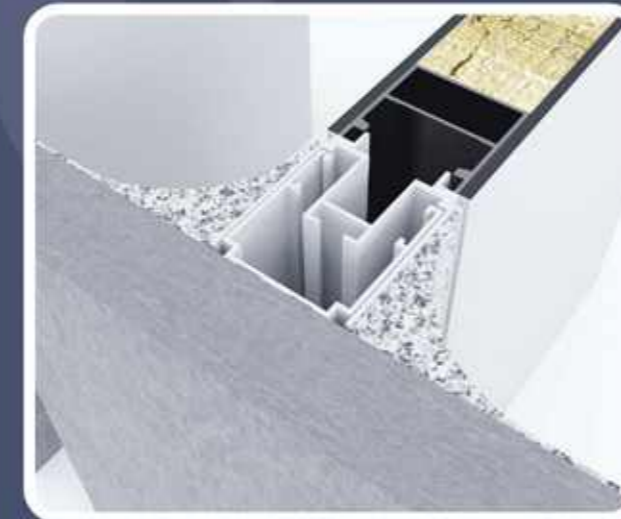
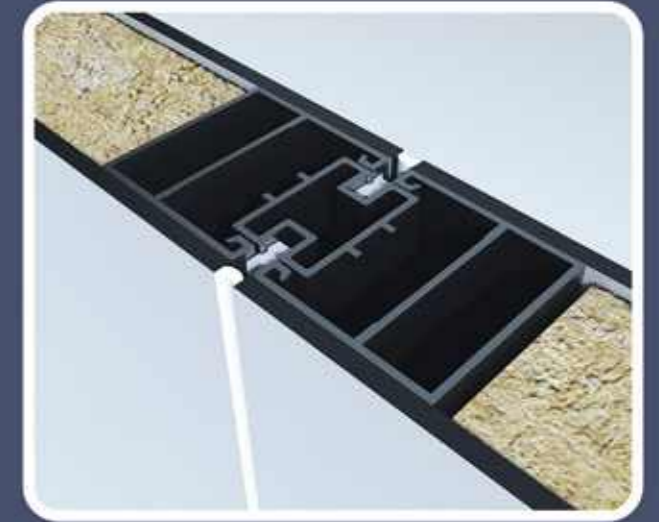
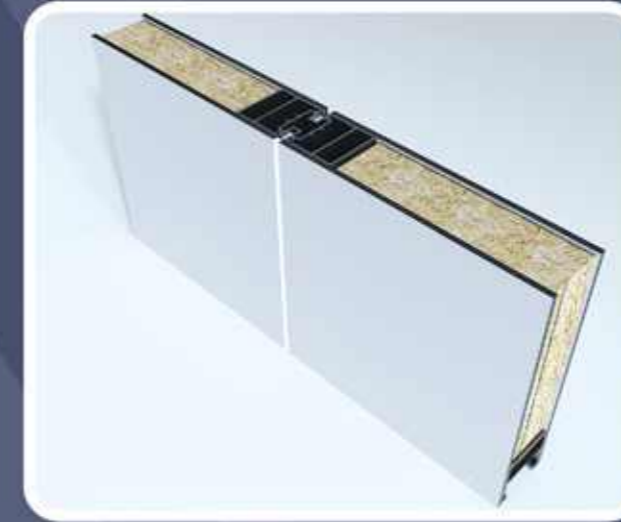
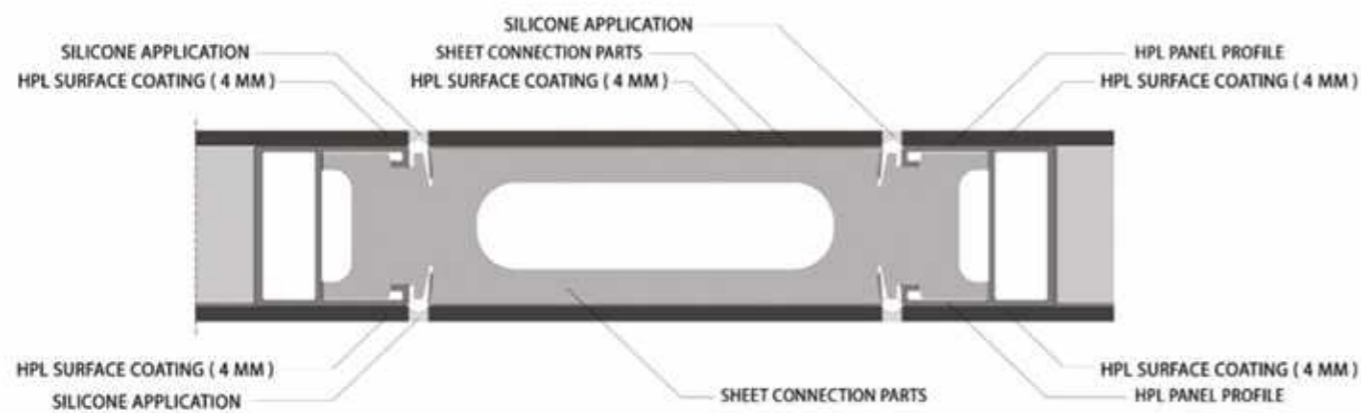
### HPL PANEL SYSTEM

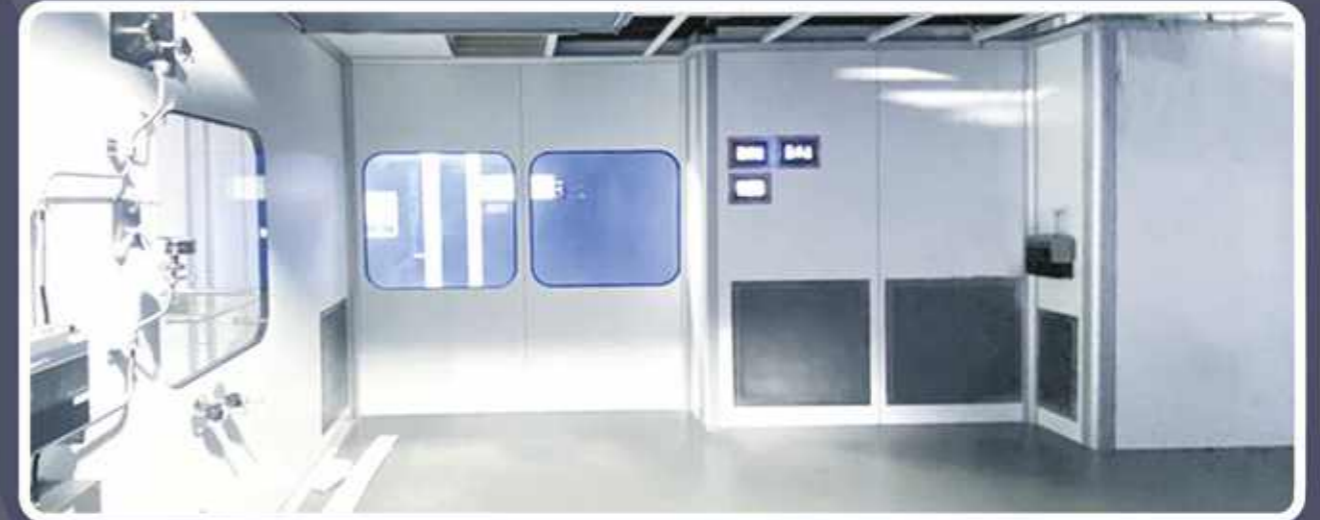
- 50 mm Thick
- 4+4 mm HPL Double Surface Coating
- Four Sides Specially Manufactured Aluminum Frame
- Inner Filling Material Rock wool 120/M3 Kg / EPS
- Bonding with High Tech Dosing System
- Fire Resistance in B1 Standards.
- Antibacterial
- Modular Easy Installation and Complement, Integrative Aluminum Accessories
- Easy to Clean Known Surface
- Complies with ISO, GMP and FDA Standards

HPL PANEL / ROVING PROFILE / HPL PANEL



HPL PANEL / CAP / HPL PANEL





## PANEL SYSTEMS

### GLASS PANEL SYSTEM

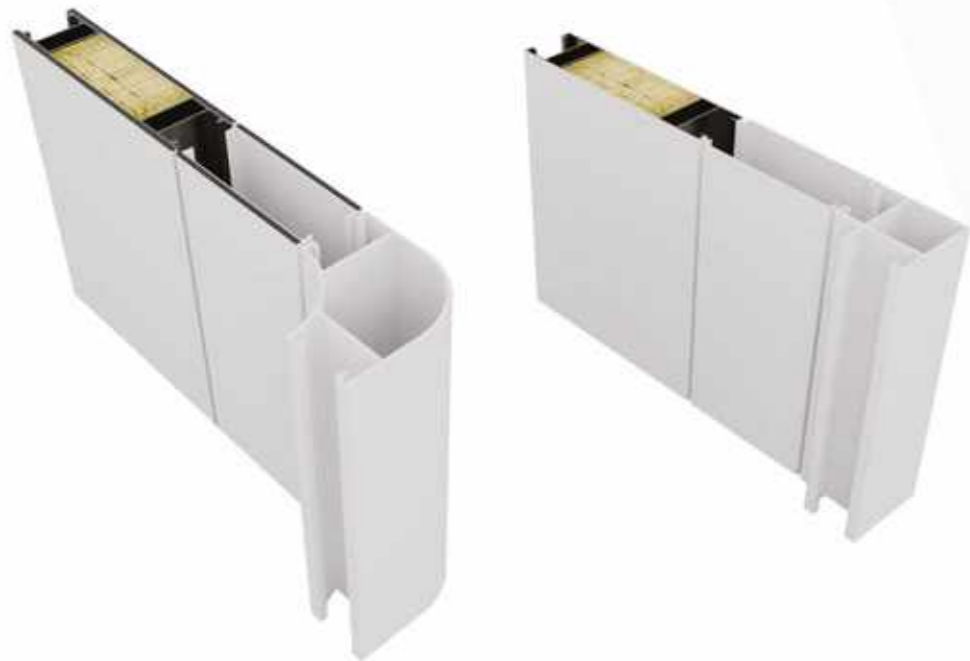
- 3+3 Double Surface Laminated 50 mm thick
- 4+4 and 6+6 Laminated Options
- Special Production and Electrostatic Painted Aluminum Frame



## PANEL SYSTEMS

### KOSKEP PANEL SYSTEM

- 0.8 mm PVDF Prepainted Steel Sheet Coating
- Agraf link for Cable Transitions and Automation Between Two Panels
- Easy to clean surface
- A1 fire resistance.
- Modular easy installation
- Antibacterial



## PANEL SYSTEMS

**STAINLESS PANEL SYSTEM**

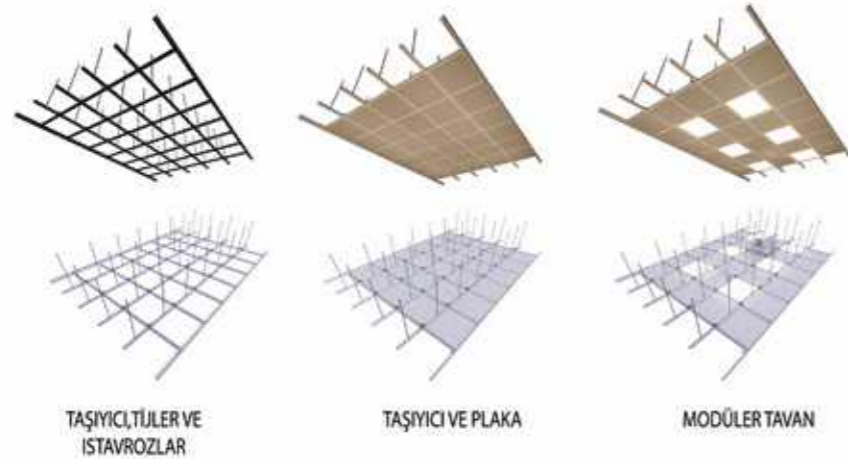
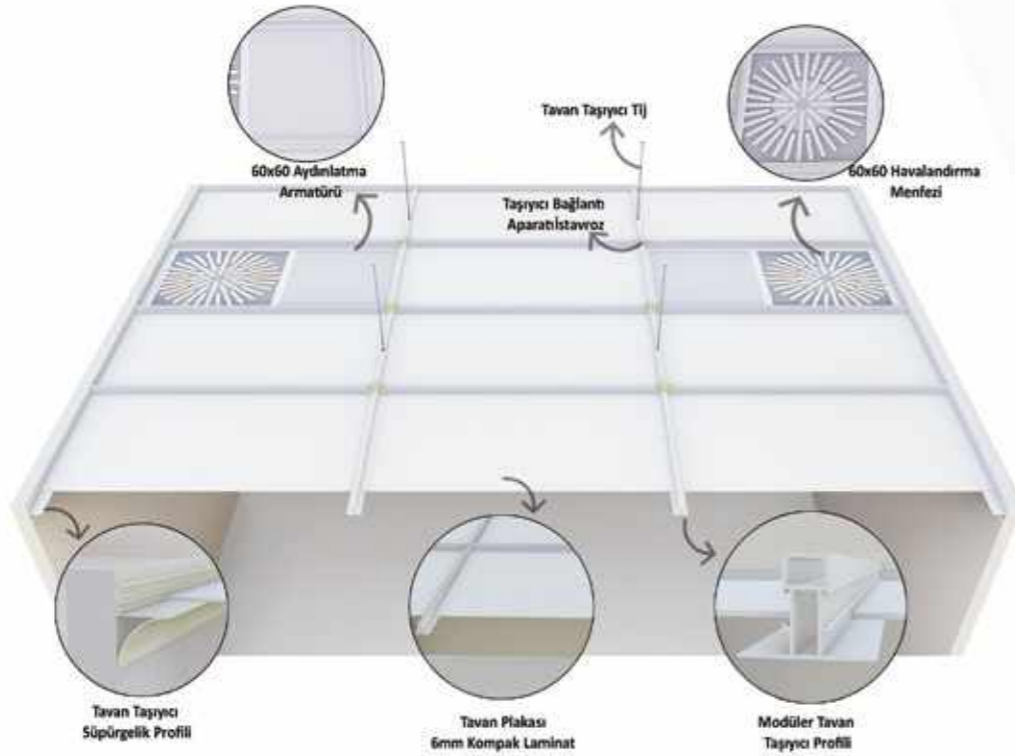
- 50 mm Thick
- 304L 4N Grade 0.8 mm Stainless Steel Sheet Coating
- Specially Made Aluminum Frame On Four Sides
- Inner Filling Material Rock Wool 120/m<sup>3</sup> Kg / EPS
- A1 Fire Resistant
- Antibacterial
- Modular Easy Installation and Complement, Integrative Aluminum Accessories
- Easy to Clean Surface
- Complies with ISO, GMP and FDA Standards



## SUSPENDED CEILING SYSTEMS

### MODULAR CEILING SYSTEM

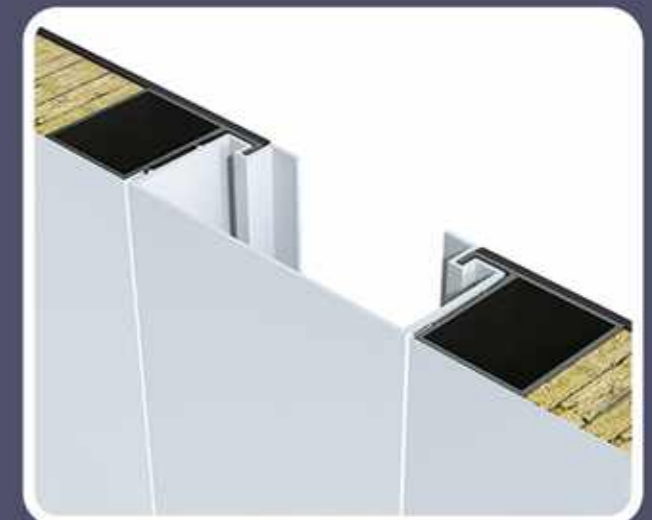
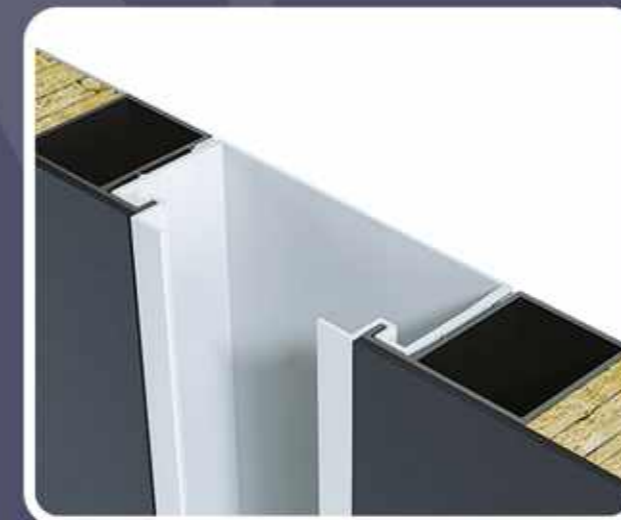
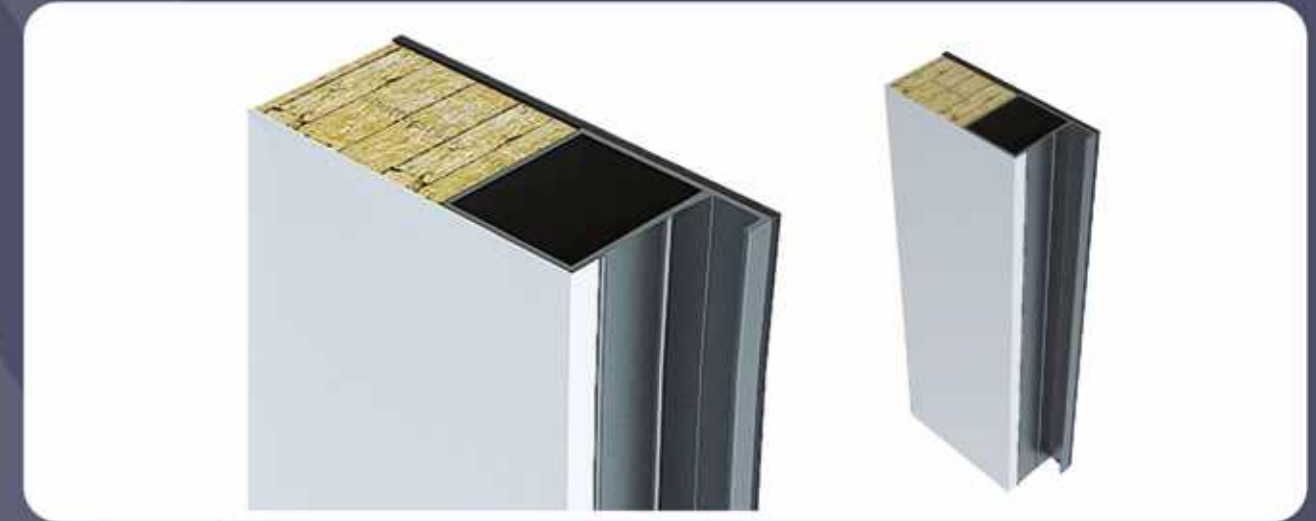
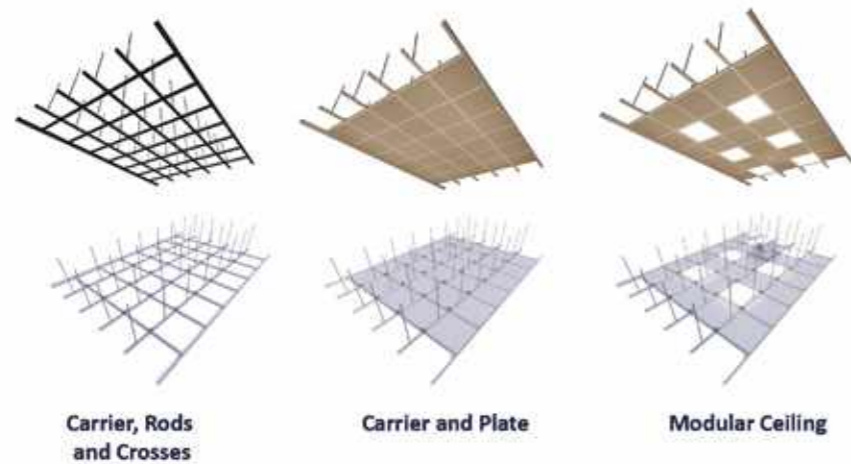
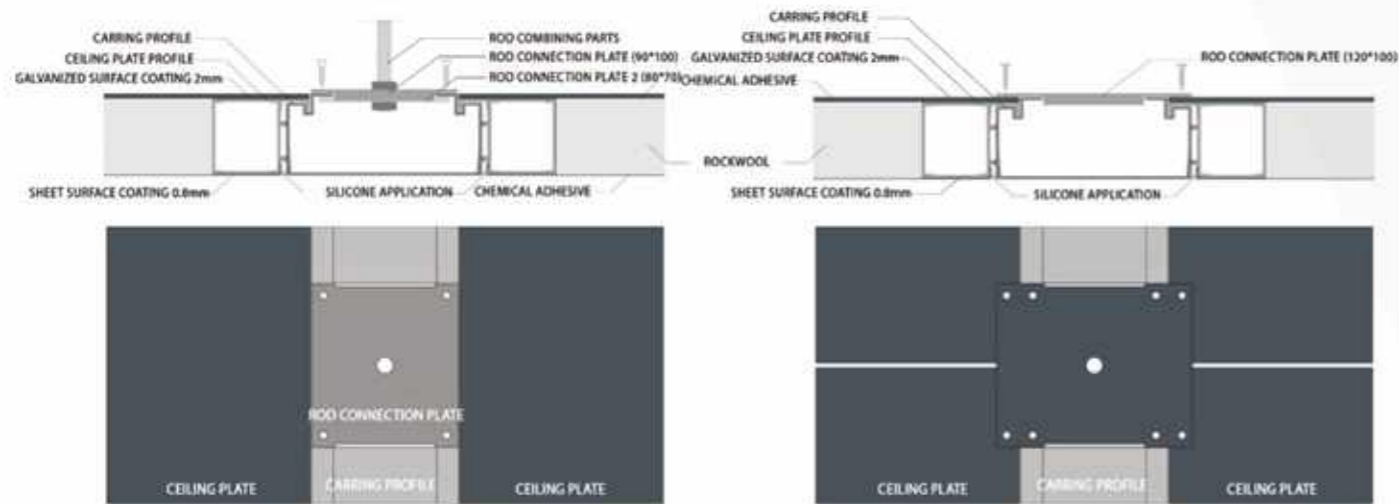
- 6 mm HPL double surface plate
- 0.8 mm PVDF sheet plate
- Special production and electrostatic painted ceiling carrier profile
- Assembly with special production carrying equipment.
- Fire resistance at HPL plate B1 standards.
- 0.8 mm sheet A1 fire resistant
- Antibacterial
- Easy to clean surface.
- Compliant with ISO, Gmp and FDA standards.



# SUSPENDED CEILING SYSTEMS

## WALKABLE CEILING SYSTEM

- 50 mm Thick
- 0.8 mm PVDF Dyed Hair Panel
- 2 mm Galvanized Sheet Plate
- Four Sides Specially Manufactured Aluminum Frame
- Inner Filling Material Rock wool 120/M3 Kg Density
- Special Production and Electrostatic Painted Ceiling Carrier Profile
- Assembly with Special Production Transport Apparatus.
- A1 Fire Resistant
- 350kg/m2 Load Carrying Capacity
- Antibacterial
- Modular Easy Installation
- Easy to Clean Surface.
- Culvert on Ceiling, Diffuser Easy Coat Six Mounting
- Complies with ISO, GMP and FDA Standards.

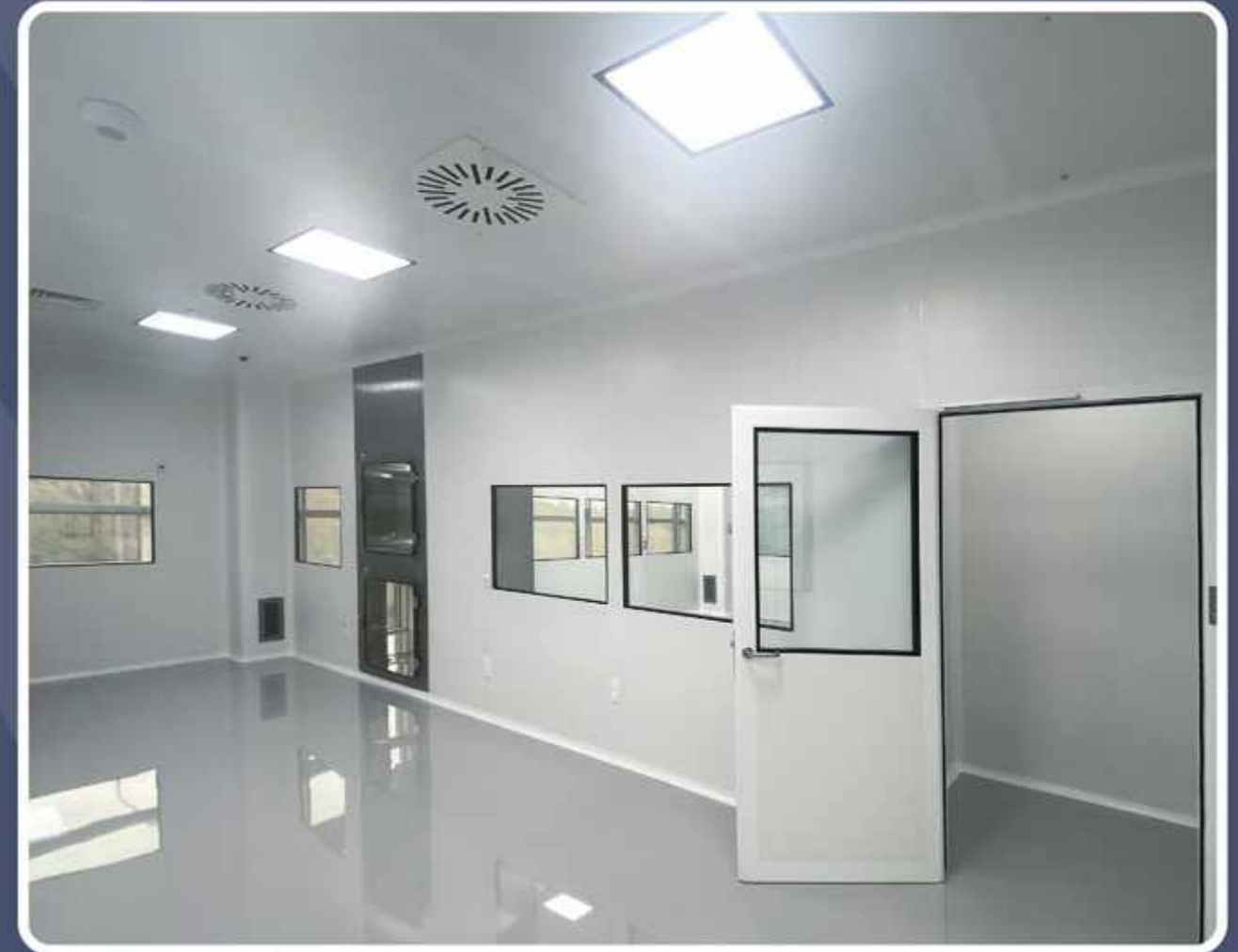




## SUSPENDED CEILING SYSTEMS

### LIGHTING FIXTURES

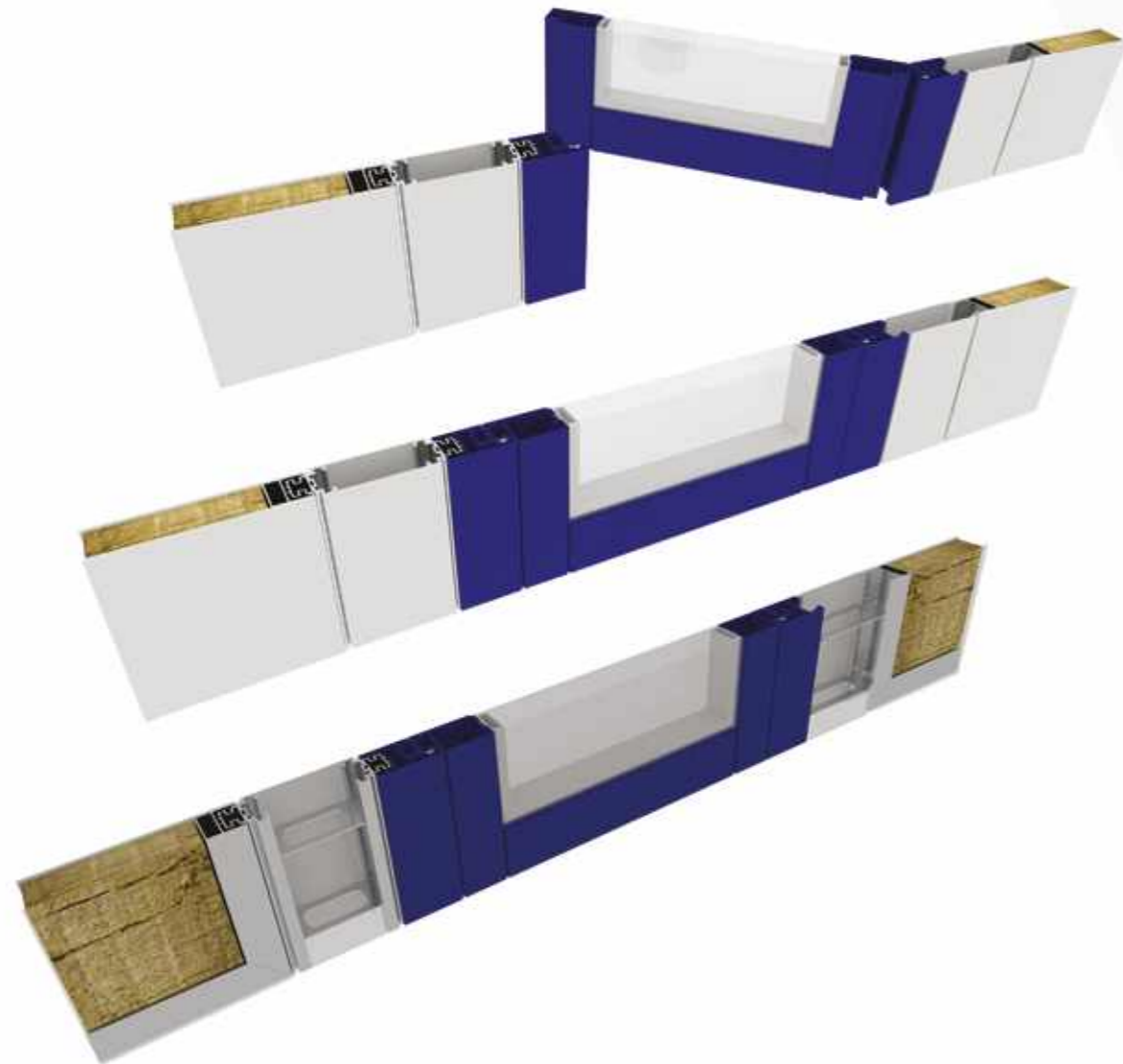
- Compatible Custom Production for Our Modular and Walkable Suspended Ceilings
- Led Lighting Optional Daylight and White Light Production
- Kitli and Non-Kit Options
- 1080mmx 300 mm and 600mmx600 mm custom production sizes
- It is IP 65.
- Easy Displacement Modular System.
- Exproof Luminaire IP 66 Lighting Option.



## DOOR SYSTEMS

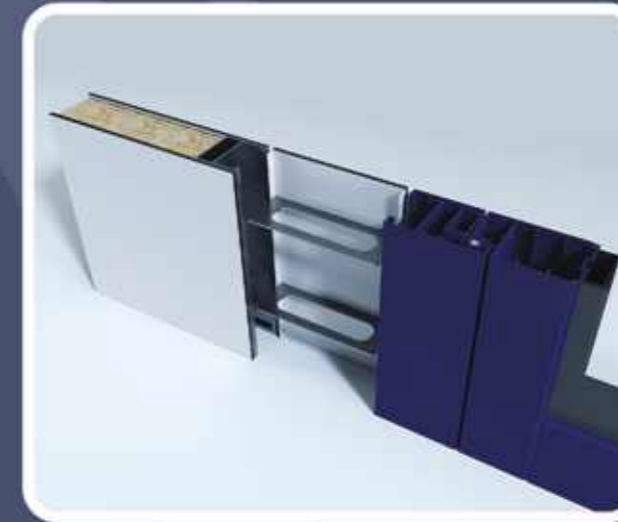
# SINGLE and DOUBLE WING PARTISON DOORS

- 50 mm thick
- PVDF Painted 0.8 mm Sheet, 4 mm HPL and 304L 4N Quality 0.8 mm stainless Coating Options
- Door Panel Four Sides Specially Produced Aluminum Frame
- Special Production and Electrostatic Painted Door System profiles
- Interior Fill Material Rock wool 120 M3/Kg Density
- Sealing feature Under Door Air Stop
- Door handle Options (Stainless cane handle and Knob handle)
- 1 Million Opening Guarantee
- A1 Fire Resistant
- Special Lock Systems
- Antibacterial
- Complies with ISO, GMP and FDA Standards



### PANEL DOOR HINGE SYSTEMS

With the hinge used on the surface, the door systems are used in a precise manner.



### HPL PANEL - DOOR AND SHEET PANEL - DOOR COMBINING DETAILS

- 1- HPL Panel - HPL Cap - Panel Door
- 2- Sheet Panel - Sheet Cap - Panel Door



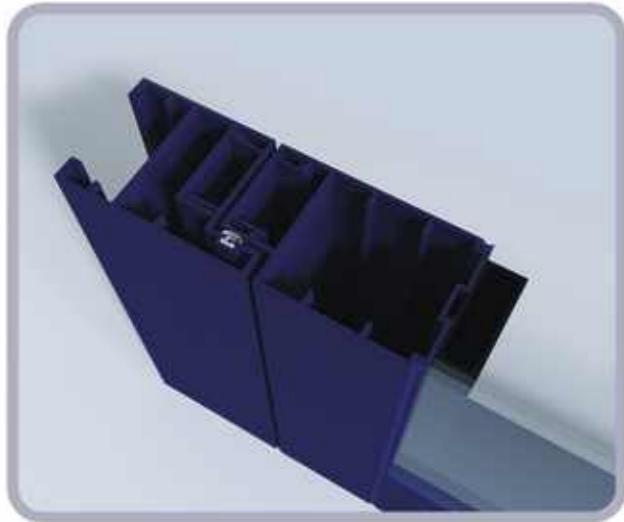
### PANEL DOOR SKIRT PROFILE SEALING DETAIL

The panel door is active by the printing method when the leaking guillotine door is closed in the channel created in the specially manufactured skirt profile.



**PANEL DOOR HIDDEN HINGE DETAILS**

With the detail of the cap between the panel and the door, a channel is created for easy installation of electrical installation or other lock systems. Depending on customer request and different according to door dimensions, a hidden hinge is used to create a flat surface.



**PANEL DOOR**

The panel door is designed as semi-hermetic as a modular system.

The door is provided thanks to the leakage and antibacterial wick in the detail of the door and the guillotine under the door.



**PANEL DOOR HIDDEN DOOR HYDRAULIC**

The panel door is active by the printing method when the leaking guillotine door is closed in the channel created in the specially manufactured skirt profile.





## DOOR SYSTEMS

**SINGLE and DOUBLE WING  
SLIDING DOOR**

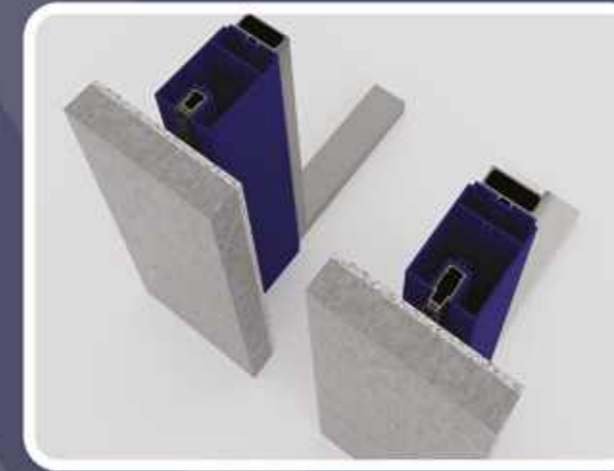
- 50 mm Thick
- PVDF Painted 0.8 mm Sheet and 4 mm HPL Coating Options
- Door Panel Four Sides Specially Produced Aluminum Frame
- Special Production and Electrostatic Painted Door System profiles
- Interior Fill Material Rock wool 120 M3/Kg Density
- Sealing feature Door Wick,
- A1 Fire Resistant
- Sliding door Mechanism and Special Locking System
- Antibacterial
- Complies with ISO, GMP and FDA Standards



## DOOR SYSTEMS

# BRICKWALL DOOR SYSTEM

- 50 mm Thick
- PVDF Painted 0.8 mm Sheet and 4 mm HPL Coating Options
- Door Panel Four Sides Custom Made Aluminum Frame
- Special Production and Electrostatic Painted Door System Profiles
- Interior Fill Material Rock Wool 120 m3 / kg Density
- Sealing Feature Under Door Air Stop
- Profiled Door Mouldings Manufactured for Special Wall
- 12 mm HPL wall Thickness between Mouldings Profiles
- A1 Fire Resistant
- Easy to Clean Face
- Antibacterial
- Complies with ISO, GMP and FDA Standards.



### PANEL DOOR SKIRT PROFILE SEALING DETAIL

The panel door is active by the printing method when the leaking guillotine door is closed in the channel created in the specially manufactured skirt profile.



### PANEL DOOR HIDDEN HINGE DETAILS

With the detail of the cap between the panel and the door, a channel is created for easy installation of electrical installation or other lock systems. Depending on customer request and different according to door dimensions, a hidden hinge is used to create a flat surface.



## DOOR SYSTEMS

**FAST HIGH ROLLING DOOR SYSTEM**

These are electric motor-driven, high-speed, overhead roll-up doors with transparent PVC or PES curtains, ideal for industrial and commercial applications.

Standard springs (not included in the Fidelity system) have a calculated mechanical life of 20,000 movements. Hydraulic motorized sectional doors with the Fidelity system are guaranteed for 500,000 movements or 5 years.

Spiral Fast Doors, featuring a 1.0 m/s maximum opening speed, excel in heavy and fast traffic areas. They effectively provide insulation, particularly from dust, gas, odor, sound, wind, and similar elements. Choose from fully transparent PVC or fully closed PES-PVC curtains with windows for full security and wind resistance.

A specially designed tension spring system allows for easy manual operation during power outages. A microprocessor-controlled frequency changer extends the door's lifespan by enabling slower speeds during opening and closing.

To accommodate varying levels of workplace traffic, a wide range of automation and security systems can be implemented. Additionally, easy integration with existing workplace automation and security systems is possible (e.g., fire alarms, access control systems, conveyor systems).

Springs and ropes have an estimated lifespan of 200,000 cycles.



## PASS-BOX SYSTEM

**DYNAMIC PASS-BOX**

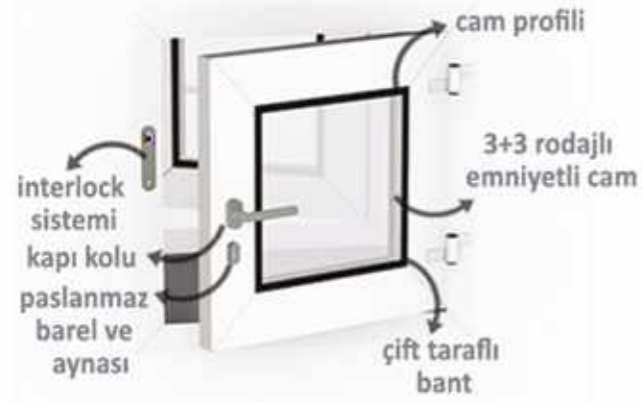
- Special Production and Electrostatic Painted Aluminum Profiler
- Door windows 3+3 laminated glass use
- Interior Finish with 304L 4N Quality 0.8 mm Stainless Steel Sheet
- Special Locking System
- UV Lamp (Ultraviolet)
- Culvert and Hepa equipment suitable for dimensions
- Stainless door handles
- Antibacterial
- Easy to Clean Surface
- Sealing Feature
- Complies with ISO, GMP and FDA Standards.



## PASS-BOX SYSTEM

### STATIC PASS-BOX

- Special Production and Electrostatic Painted Aluminum Profiler
- Door windows 3+3 laminated glass use
- Interior Finish with 304L 4N Quality 0.8 mm Stainless Steel Sheet
- Special Locking System
- UV Lamp (Ultraviolet)
- Culvert and Hepa equipment suitable for dimensions
- Stainless door handles
- Antibacterial
- Easy to Clean Surface
- Sealing Feature
- Complies with ISO, GMP and FDA Standards.



## CLEANROOM SYSTEM INTERLOCK SYSTEM

- Specially Designed system for the Transition areas of Personnel and Products
- Programming with 2, 3 and more versions



## PASS-BOX SYSTEMS GAS-TIGHT KAPI and PASS-BOX SYSTEM

- Use in the Senior Biosecurity Laboratory in BSL-3 / BSL-4 class
- Inflatable Pneumatic One Piece Production Gas Sealed Gas Seal System
- PLC System Security Control unit
- All Units Are Tested According To DIN 25496 Standards.
- Outer Frames Stainless Steel and Corners are oval.
- Door and Pass-Box Wings are options as Stainless or all glass



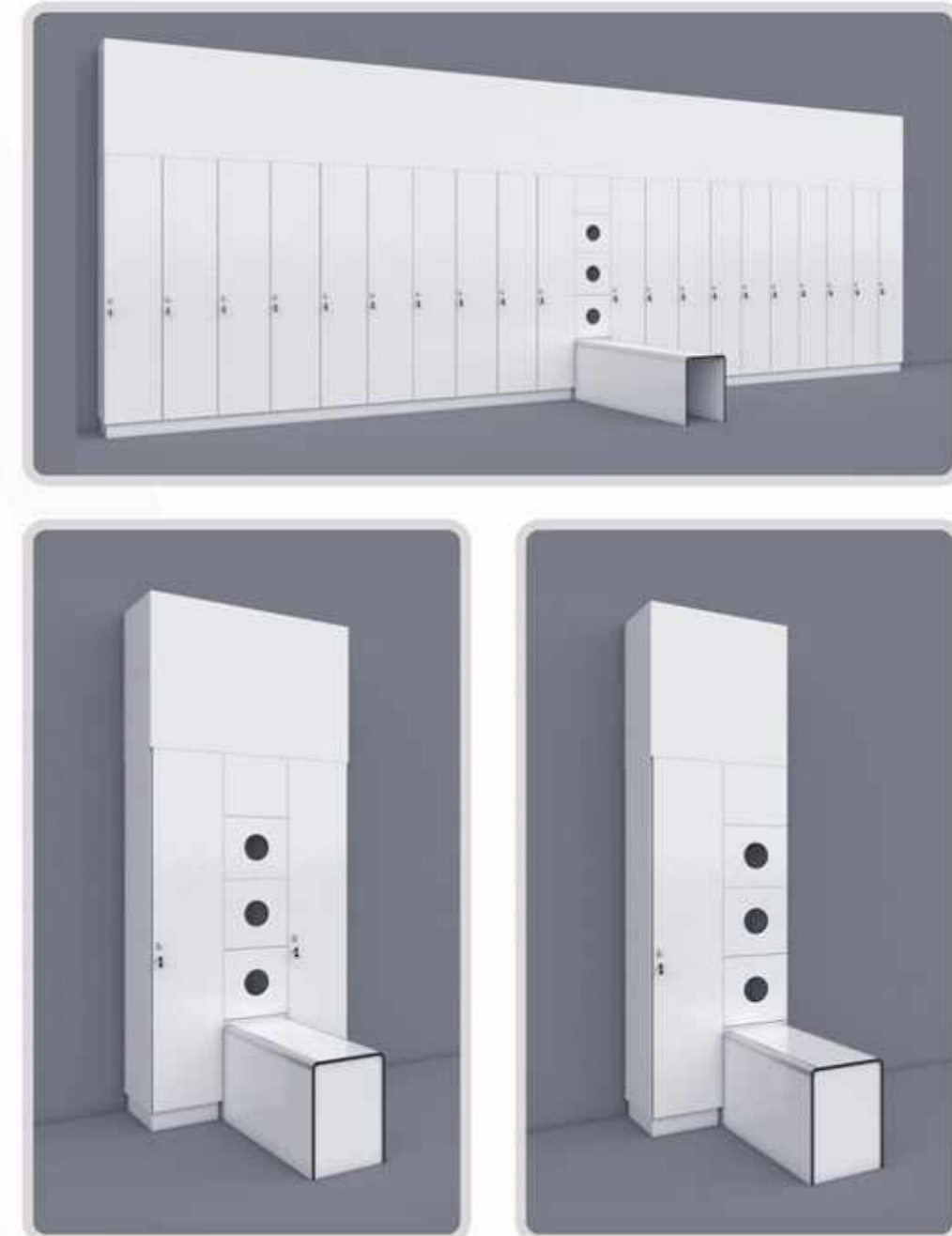
## CLEANROOM SYSTEM JUMP BENCH and CHANGING ROOM

- 12 mm HPL (High Resistance Laminate) Matte Surface
- Ventilation Anemosdat
- Modular Easy Installation.
- Oval Corner Anodized Matte Aluminum
- Easy to Clean Surface
- Antibacterial
- Complies with ISO, GMP and FDA Standards



## CLEANROOM SYSTEM MATERIAL CABINETS

- 12 mm HPL (High Resistance Laminate) Matte Surface
- Ventilation Anemosdat
- Modular Easy Installation.
- Oval Corner Anodized Matte Aluminum
- Easy to Clean Surface
- Antibacterial
- Complies with ISO, GMP and FDA Standards



# CLEANROOM SYSTEM

## AIR SHOWER SYSTEM

- 304 L 4N quality 0.8 mm SHEET coating
- Specially placed nozzle system
- Sealing feature
- A1 fire resistance
- Custom made air shower system
- Compliant with ISO, GMP and FDA standards

