



Motion Control Technologies Center

hktm

Good Engineering
www.hktm.com.tr

Good Engineering

HKTM's involvement in various engineering practices such as development of ideas, project-design, manufacturing and their emphasis on education and learning along with their dynamic structure emphasizes their ability to make dreams come true.

Good Engineering;

- Ensures to increase the welfare of nature and of all living creatures with scientific and technical principles.
- **Listens to others and does not confine any requests with expectations**
- Shares her knowledge and experience, notwithstanding any condition or benefit.
- **Does not take any action that could be in contradiction with scientific principles.**
- Ensures that its suggestions are not momentary and are based on persistency and sustainability.
- **Prevents any discrimination, and meets the principle of equality. in her own environment.**
- Ensures that the solutions developed comply with environmental and occupational health& safety requirements.
- **Does not generate an excuse but a solution, as it has a comprehensive understanding in her field of activities.**



Our dreams shape our ideas, our ideas form our strength.

When drawing upon our strength originating from engineering, we care to respect all living creatures and environment, to ensure that people live and work safely, to create awareness and innovation, to promote internal and external learning, to raise our quality criteria at all times and to share our knowledge that grows with increased experience.

Motion Control Technologies Center



To provide the integration of engineering with art; industry with nature; factory with environment; and technology with life we started our operations in 1988.

To understand, develop, direct the motion, as well as to make efforts to bring it under control by taking inspiration from the motion's nature have become our purpose of foundation.

By raising our quality to international standards and relying on the strength acquired from our being an R&D center we develop technological solutions and projects in all motion systems that need to be controlled, we achieve a phenomenal success in realizing significant projects, both locally and globally.

In the case of sizeable projects, we join our effort with partner companies, which are compatible with our engineering infrastructure and are specialized in their field of operations.

Specialized in different motion and control technologies and engaged in multidisciplinary and exemplary engineering solutions we keep on manufacturing in an attempt to become a global center for control technologies of industrial motion.



“
For us engineering is one of
the most creative ways to
make dreams come true.

History

1998

FOUNDATION

Hidropar Kocaeli Ltd. Şti. was established with a team of 3 led by Tunç ATIL.

2005

LARGE PROJECTS

Based on large iron and steel investments such as ErdemirA.Ş, it played an active role in hundreds of iron and steel projects in Turkey and 19 surrounding countries.

2007

HYDRAULIC SYSTEMS MANUFACTURING

Started the in-house manufacturing of hydraulic systems. Starting with 20 L, over the years it began to manufacture hydraulic systems with up to 40.000 L of storage capacity.

2008

BOSCH REXROTH

Became the company that uses Bosch Rexroth products most in its 10th anniversary. It is still the leader in this area without losing its position.

2009

INDUSTRIAL ROBOT

Made its first project with Industrial Robot. It initiated hundreds of private projects on robotic systems.

2011

EASTERN MARMARA BRANCH

First training complex and branch were opened in Eastern Marmara Region.

2013

HKTM

Title of the company was changed to HKTM A.Ş. It transferred its aim of becoming the Motion Control Technologies Center to its name. The structure of the Board of Directors of the company was renewed.

2014

HKSM

With the "systematic maintenance" approach, HKSM company was founded to better serve in service business.

2015

GREEN BUILDING

Moved to its new green building with 6500 m² area containing new technologies. It increased its production capacity 4-fold.

2016

PATENT

Made 2 utility model and one patent application with the systems it developed in the mechanical automation area.

2017

LEED GOLD

Was able to be the first factory in its sector and 14th factory in Turkey to receive Leed (Leadership in Energy-Efficient and Environmental Design) Gold Certificate.

2018

R&D CENTER

Became the first R&D Center based on Motion Control systems in Turkey.

2019

ORGANIZATION

Made its organizational structure more active, less prone to be affected by economic processes and more customer oriented.

2020

LOGISTICS AUTOMATION

Started to offer on-site design, programming and manufacturing works for intelligent warehouses to the logistics sector.



PRODUCTION LINE

Started manufacturing fully automated bonding line in the white appliances sector. Became one of the few companies worldwide installing turnkey bonding lines.

DELTA ROBOT

With the TÜBİTAK project, first locally-produced delta robot in Turkey was initiated. (TEYDEB Project No: 3100448)

BLACK SEA BRANCH

The branch in Ereğli, Black Sea was opened for service to whole Northern Turkey.

CORPORATE STRUCTURE

ERP and CRM practices were initiated to improve the corporate structure of the company.

EDUCATION

Started to transfer its occupational experience to students with the education given in universities.

SERVO CYLINDER

The first high-frequency servo cylinder and local control card project was completed with success. (TEYDEB Project No:1150110)

QUALITY DOCUMENTS

Its quality was documented by Bureau Veritas.

REGISTRATION

Obtained patents for the company name and logo in 28 European countries and Turkey.

KARTEZYEN ROBOT

Started producing cartesian systems specific to the Plastic Injection Sector. Established international business partnerships.

MOTTO

Obtained patent for using the motto "İyi Mühendislik" in Turkey.

ROTARY ACTUATOR

Started producing solutions and offering products specific to the defense industry and mobile sector.

ENERGY EFFICIENCY

Documented its sensitivities with ISO 50001 Energy Management System.

ELECTROMAGNETIC

Started manufacturing a new type of actuator in industrial motion systems.

INFORMATION SECURITY

Completed its efforts to fulfill the standards of ISO 27001 Information Security System.



We are working to build an approach that fully meets and even exceeds your needs and expectations.

We have certified our environmental awareness with **ISO 14001 Environmental Management System** to consider environmental impacts in all steps from the first stage of the product to the time we offer it to our customers.

We have certified our perspective, which always aims for the better and is based on continuous improvement, with **ISO 9001: 2015 Quality Management System** at our new plant.

We have certified our sensitivity in terms of health and safety of our employees and visitors with **OHSAS 18001 Occupational Health and Safety Management System**.

Regarding our activities for efficient use of energy and natural resources in all our processes, we have got the **ISO 50001 Energy Management System**, and we have managed to become the first plant in the sector and the 14th plant in Turkey to be awarded the **Leed Gold Certificate**, which is granted by the **U.S. Green Building Council**.

Being aware of the importance of customer satisfaction, we have certified our relevant activities with **ISO 10002 Customer Satisfaction Management System**.

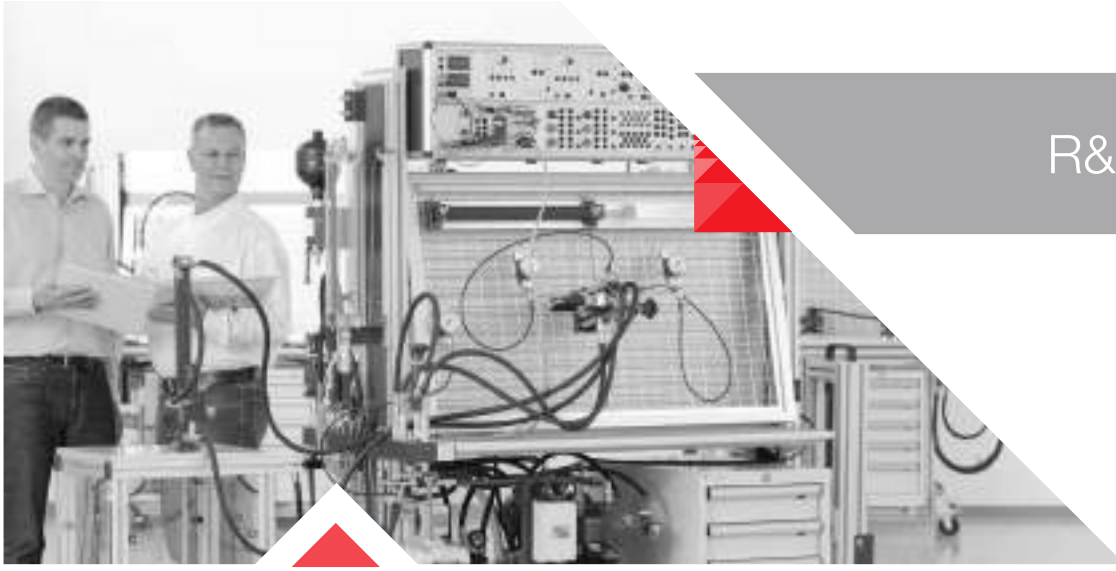
In order to make sure that the information assets of our company and our customers are free of risks, we are continuing our efforts to reach the standards of **ISO 27001 Information Security System** with our sensitivity for Information Security.

It is perhaps our greatest responsibility to develop world's most innovative technologies with an utmost respect to the planet's limited resources.

This is our duty towards both our customers and our children.

For this reason, we comply with the most up-to-date environmental standards and we consider the environmental impacts in each step during the period from the first stage of a product to the minute we present it to its user.





We were recognized as the **854th R&D Center of our country by the Republic of Turkey Ministry of Industry and Technology**. We are one of the first companies in our country which are specialized in Motion Control Technologies, and we are also proud to have managed to be a R&D Center in this field. We are well aware that we need to work more.

With the pride of **1 Patent and 2 Utility Models** that we brought about as a result of our R&D activities in line with intellectual and industrial property strategies, we will continue to increase the number of our national and international patents with new applications each year.

Hydromechanics and Product Development

R&D efforts including various disciplines in hydraulic systems are continued.

Efforts to add controllable hydraulic oil and different actuators to the product range are continued.



Mechatronics Product Development

Efforts for designing gear transmission systems, electromechanical actuators and module systems for the localization and standardization of the products required by machine manufacturers in their systems are continued.



Electromechanical and Robotic Project, System and Product Development

For the special gripper systems, which are required for the robotic systems to be used more on-site, to work securely, the necessary research in the field of design and production of required software and algorithms are made and projects are produced with international partnerships.



With its innovative practices which it implemented in its eco-friendly factory with a 6500 m² space in Gebze Plastic Organized Industrial Zone, by fulfilling the criteria for LEED (Leadership in Energy-Efficient and Environmental Design) which is the most prestigious green building certificate with the highest recognition and acceptance level, **HKTM** became **the first factory in its sector and 14th factory in Turkey to receive this certificate in LEED GOLD level with high energy and water efficiency, interior quality, efficient use of materials and resources, eco-friendly and sustainable policies.**



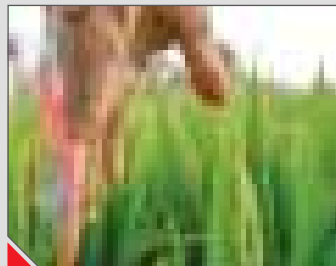
Award-Winning Building of Good Engineering

Our green building which complies with the vision of being a technology center for motion and control won awards from many local and foreign institutions.



We Save 92 Mature Trees Each Year.

We are trying to lower our carbon footprint as much as possible with the aid of the solar energy collection systems (Photovoltaic panels, Solar wall) in our building.



Sensitive Company Conscious Employee

The starfish was our source of inspiration in our activities to raise awareness, to provide self-renewal and renewal for our environment against the blindness caused by routine.



Production Capacities



Design Office

3D design simulations and project control for all hydromechanics, mechatronics project and unit products manufactured are performed in our design office.

After the preliminary design is approved by the customer, manufacturing drawings are made and they are transferred to the manufacturing department.

Quality Control

Except for the ready-supplied products to be used in the projects, all materials are procured from our subsidiary industry which we continuously work with.

Outsourced products are transferred to the assembly area after passing the quality control at entry.

Continuously used consumable supplies (bolt, sleeve, etc.) are kept on consignment in our production area by proven companies.

Machining

To produce the manufacturing parts with the required precision, CAM is performed in advance. With expert CNC bench operators, manufacture is made in accordance with the technical drawing.

Processed parts are controlled with precision measurement tools. Machining machine park in which we invest continuously has a capacity of more than 10 CNC, NC and manual machines.

Welding

Our personnel with internationally recognized certifications provide services inside the factory on welding.

With Argon (TIG) and Electrode Welding, WPQR is prepared in welding processes performed for each system in accordance with the ISO 15614-1 standard for stainless and steel materials with a diameter of 45 mm and above and a wall thickness in the range of 3 -20 mm.



Production Capacities



Hydromechanics System Assembly

Products coming into the assembly site from manufacturing and warehouse are meticulously controlled for fitness for the project before assembly.

While assembly of hydromechanics projects, hydraulic units, valve stands, control blocks, accumulator stands, hydraulic cylinders and rotary actuators are made according to quality standards, customizations based on customers' requests are possible.



Electromechanics and Robotics

Manufacture and assembly of special machines, robotic packaging, palletization, bonding projects, production lines, electrical panel are made.

Our professional team who perform the manufacture and assembly of the system also provides trainings together with the installation of the system.

In the same project, different disciplines are implemented together, such as pneumatics, mechanical design, electrical panel, software etc.



Dyeing Plant

In our dyeing plant with its ventilation, filtration and heating designed in accordance with occupational health and safety standards, dyeing procedures in RAL codes customized according to customers' requests are performed in accordance with international standards.

Dyeing procedures are performed with acrylic and epoxy paints with a minimum coating thickness of 60-80 microns which is measured with measurement tools.



Testing and Quality Control

Before the shipment of the product, tests for pressure, function, electrical control are performed. Customers are involved in the tests either live or via video conference.

Scratch, damage information, paint control, labelling and equipment control, packaging information for the products ready for dispatch are performed by the quality control department.

The product is packaged in a way that it won't get damaged during transportation and shipped.



Supply and Stock



We can be faster and more flexible in our projects as we use products that we stock and supply. Subsequently we can answer the needs of our customers for spare parts quickly.

In our stocks approximately 3.250 product items are kept as 120.000 pieces, and these amounts make us the supplier with the strongest stock in the eye of the companies we represent.

Our stock power and international work on projects allows us to export to 18 different countries and enter their supply chains.



Mechatronics Products

Central Lubrication Systems valves and pumps, linear components (ball screws, nuts, rails and runner blocks), servo motors between 0,32 Nm and 100 Nm with or without brake, planetary gear precision reducers, couplers, sensors required by machine manufacturers are regularly in stock.

Hydromechanics Products

All gear and variable displacement pump, motor, hydraulic valve (direction, pressure, security, throttling, counter-weight, etc.) bladder hydraulic accumulator and filter elements used in hydraulic systems are available.

In order to quickly provide for our customers' needs, we try to select products our stock that are similar to the ones used in project.

Projects

Thanks to inventory management programs, with regular monitoring of the stocks of standard products, continuous customer demands are also met along with the projects.

The expertise of Bosch Rexroth is the determinant factor in all our activities within the framework of the main dealership that we have been conducting since our establishment.

The products that we use in our product sales as well as in our projects carry the Bosch Rexroth label.

Rexroth
Bosch Group

Ana Bayi

Electrical Drive and Control

In servo drive and motor applications with high control and precision, an experienced supplier with a high know-how has a big importance.



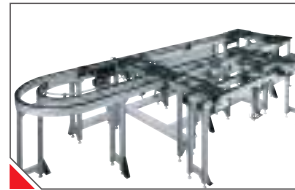
Linear Motion Technologies

Linear motion systems used for variable speed on a straight line include linear rails, runner blocks, ball screws, rotating nuts and modules.



Assembly Technologies

With assembly tables consisting of aluminum profile systems, transfer, assembly lines and accessories groups, turnkey solutions are offered.



Welding Technologies

MFDC resistance welding units used in automotive and its subsidiary industry as well as white appliances sector provide significant energy savings compared to AC welding systems. AC welding systems are suitable for medium and low quality operations. They are more economic when compared to MFDC unit but they have high energy costs.



Screwing Systems

Precision and continuity in screwing quality directly affect the quality of the product. Electric screwing offers better quality results compared to pneumatic screwing and 50% energy savings can be achieved.



Industrial Hydraulic

As the main dealer of Bosch Rexroth, we offer the most suitable solutions for open- or closed-circuit drive systems that will meet your needs in industrial applications.



Mobile Hydraulic

Using Bosch Rexroth hydraulic and gear technologies together for Mobile Applications, we produce solutions specific to the application or the manufacturer.



Gear Technologies

Conventional gearboxes are used as the main drive in caterpillar vehicles or as a wheel drive in wheeled vehicles, as rotary drive for rotary motion and as a crane drive for lifting and lowering loads.





Systematic Maintenance



- ✎ We provide maintenance services in the fields of pneumatics, mechanics, electric and automation for all sectors, mainly for heavy industry.
- ✎ We provide support for TPM (Total Productive Maintenance) processes of enterprises and take over their maintenance management by making maintenance agreements.
- ✎ Equipment installations as well as pipe manufacturing and installation of hydraulic, pneumatic, lubrication, water circuits are carried out as turnkey.
- ✎ We provide necessary periodical maintenance and troubleshooting works.
- ✎ Using certified products, we provide and perform pipe, hose and fittings replacement.

Online Status Monitoring In Hydraulic Systems

We install predictive maintenance systems consisting of measurement devices, sensors and software that provides monitoring of 4 main parameters of hydraulic systems which are the values for pressure, temperature, flow rate and impurity, compares these with nominal values, and analyzes the process.



Online Status Monitoring In Rotary Equipment

We integrate improved technologies into your systems in order to detect electrical, mechanical, operational and environmental faults in pumps, fans, compressors, conveyor and alternator systems in advance.



Maintenance Repair Management System

We digitalize the maintenance processes and make them manageable from a single platform. We install systems that generate automatic work orders with sensor integrations.

With mobile applications, barcodes and QR codes, we ensure that all of your assets can be controlled from anywhere.



Mechanics Automation and Robotics



With our experience gained through special solutions that we have developed or implemented specific to the sector, we produce integrated systems that will meet your demands focused on **“Digital transformation in the industry 4.0”** optimally.

With the brands we are representing, we are also able to offer all mechanical and automation products that form the systems based on industrial motion from a single source.

Hydromechanical Systems



The products that we use in our projects and sell predominately carry the **Bosch Rexroth label**.

With the technical infrastructure, experience and expert staff we produce, turnkey hydromechanical systems for our customers.

All hydromechanics based projects requested by our customers are carried out by HKTM projects engineers.



Bonding Lines

We produce bonding lines customized to needs, especially for the white goods sector, with **single or double component bonding agents and sealers with different technical specifications** that are precisely applied to desired positions with low tolerances.



Food Packaging Applications

With the systems we produce, it is possible to produce the products without human touch and subsequently palletize them following the required process, especially in food production lines **requiring high hygiene.**



Handling, Packaging

We create flexible, economic and reliable robotics system solutions for certain handling and packaging operations in general purpose handling works or inside a line



Robotics Systems



We offer a wide range of services on robotics systems in many sectors with our engineer team who are specialized in system design, manufacturing of the system parts and supply of the products to be used.

Parts Machining and Cutting

We offer **economic and highly efficient** solutions for a wide range of cutting and machining operations including complex parts thanks to robot based cutting and machining solutions.



Palletizing

We offer turnkey projects **according to special needs** on robotic or automated feeding, discharging, handling, packaging, crating and palletizing systems in all sectors.



Special Solutions

With the machine and line solutions created according to customers' needs, we devise economical and reliable **turnkey systems that meet your demands completely.**



Automation Systems



We can offer the main automation products of all moving systems from a single source that you may want to install in the field of motion and control technologies both on the components level and with its installation complete in a way that it can be commissioned.

MFDC Resistance Welding Applications

Mainly in white goods, automotive and subsidiary industries, **we can produce turnkey systems** with low energy costs by using MFDC welding technology.



Assembly Line Applications

Using ready components, we can design a complete assembly line with the MTPRO software. Subsequently we assemble and activate it in a short span of time, **thus installing high efficiency lines.**



Linear Modules

We provide optimum solution according to speed, load and stroke with compact solution containing timing belt, gear rack and threaded rod for linear transfer applications.



Automation Systems

Transfer Systems

Thanks to the dynamic servo motors, high precision linear movement components and engineering of Bosch Rexroth, **KRS series robots that we have designed for plastic injection machines** are able to keep their pace and positions for each cycle at pick and place, insert placement and quality assurance applications.



Mega Cartesian Robots

We are increasing the production **efficiency through mega-sized custom Cartesian robots for systems** where several production machines work in the same production hall, just as in the plastic injection sector.

The modular solutions we develop can be reshaped according to customer requirements and specialized for different needs.



Electrical Cylinders

Electromechanical cylinders which offer the advantages of modern control technologies are a high-performance alternative compared to pneumatic and hydraulic cylinders and **they rank the highest when it comes to energy efficiency. Such actuators can be utilized even at high powers.**

Parameters of force, position and drive speed can be adjusted as desired by the user and adapted to new tasks in a flexible manner through the drive system at any time.



Safety Lock Systems

Locking systems developed for the safety of moving cylinder equipment can be used with both hydraulic and pneumatic drive systems.



Silicone Dosing Systems

It consists of the equipment required for mixing two **different fluids at certain ratios and dosing these with the desired precision.**



Lubrication Systems

Lubrication systems that can transfer liquid and grease required for **extending the machine and equipment life cycle** are included in our product range.



Mechanical Products

We can offer the main mechanical products required by all systems **based on industrial motion from our stock.**

Power Transmission Systems

With the coupling applications with various features, **we can provide the required power transmission for almost all engineering applications.**



Reducers

Planetary reducers which are used in torque transmission of synchronous motors used in applications requiring precision and speed are included in our **product range with 1-8 arcmin space and 60- 240 body.**



Linear Motion and Assembly Systems

As its name implies, these are systems moving on a straight line at fixed/variable speeds.

We offer solutions with assembly tables consisting of aluminum profile systems, transfer lines and accessories groups.



PLC Automation Systems

We can achieve communication between all our products using any PLC brand with most common protocols as well as the supply and after-sales services for well-known **PLC brands in the market in IEC 61313-3 standard.**



Servo Motor Drive System and Maintenance

In servo drive and motor applications with high control and precision, an experienced supplier with a **high know-how has a big importance.** We also provide servo motor and drive maintenance services.



Pneumatic Products

We supply pneumatic products which are used in almost all manufacturing, assembly and operation lines, from construction machinery to robotic systems, factory production lines **to works that manpower is not enough.**



Motion Control Applications

We offer solutions in driver-based sheet metal drive, opener and flying shear systems as well as slitting, transfer, grouping, printer, marking source systems. We are at your service with **high-performance solutions in applications up to 64 axes.**



Automation Products

We can offer the main automation products of all moving systems from a single source that **you may want to install in the field of motion and control technologies both on the components level and** with its installation complete in a way that it can be commissioned.

Resistance Welding Technology

MFDC resistance welding units used in automotive and its subsidiary industry as well as **white appliances sector provide significant energy savings compared to AC welding systems.**



Screwing and Tightening Systems

Precision and continuity in screwing quality directly affect the quality of the product. Electric screwing offers better quality results compared to pneumatic screwing and **50% energy savings can be achieved.**



Sensors, RFID and Fieldbus

Sensors are used in almost all areas of our lives and became indispensable. **Increase in the quality** and quantity of information in the field accelerated the development of new fieldbus technologies.



Hydraulic Automation

We are the only addressee for our customers by also making the supplementary automation of hydraulic **systems which are used in different sectors with different areas of usage today.**



Automation Panels

We are also able to make the automation panels, project planning and assembly of **all turnkey hydromechanics and automation systems which we produce ourselves.**



SVP Applications

SVP (servo variable displacement pump drive system) consists of hydraulic pump driven by synchronous servo motor. With SVP, pressure, flow rate, position control and force control **can be made as well as dynamic performance and closed-circuit accuracy.**



Hydromechanics Systems

Hydraulics project planning is made by HKTM project engineers in a manner compatible with the projects requested **by our customers and with functioning of the existing systems.**

Hydraulic Power Units

In accordance with the system requirements demanded by our customers, we produce hydraulic power units that are detailed by **our project engineers and have a storage capacity between 20 - 40.000 L.**



Valve Control Blocks

We design and manufacture valve control blocks up to 4.000 kg made of GGG40 nodular cast iron or aluminum with which generally direction, speed and pressure adjustment of the control element is **made and which combine the valve groups.**



Hydraulic Cylinders

As Motion Control Technologies Center, we produce hydraulic cylinders customized for our customers by combining our know-how and field experience with regard to hydraulic cylinders and their application areas gained over more than 20 years with the manufacture and test lines in our factory.



Hydromechanics Systems

Valve Stands

We produce **valve stands whose features are determined by our project engineers** and which are detailed by our design team, and which contains the valve control blocks suitable for requirements of the system.



Test Systems

We design and produce systems that can perform the position control tests as well as function, pressure, leakage tests of proportional or on/off hydraulic valves.



Filtration and Circulation Groups

We create application-oriented solutions for groups in which circulation pumps, online filters, filters and coolers are used in series connection in order to control the **cleanness and temperature of oil in hydraulic systems.**



Accumulator - Nitrogen Tube Stands

We produce systems that **are used to collect the pressurized oil generally in order to use it for emergency situations**, in which piston accumulators and nitrogen tubes or bladder hydraulic accumulators are combined by connecting with collectors.



Hydromechanics Systems

In new projects, capacity enhancement or modernization works, HKTM can create solutions at the design, project planning, simulation, manufacture, assembly, commissioning and training stages for complete hydromechanical system solutions or for a certain part of the main project.

Load Platforms

We make turnkey project design and production of load platforms customized according to customer expectations.

Our experience gained from different sectors and expert staff optimize your work-specific projects.



Special Hydraulic Presses

We are the solution partner of our customers for special hydraulic presses **detailed according to the requested application and sector and in general designed for up to 2 to 10 tones.**



Special Solutions

We are able to offer turnkey project planing, design and production of all projects that contain motion control systems with the technical **infrastructure, experience and expert staff that we gained as HKTM.**



Representations

We supply and keep in stock products of brands from 6 different countries that we are the representative of via our import division. We use these products in projects as well as offering them to our customers.



KTR

The company which works in the power transmission field for more than 50 years provides services in almost anywhere in the world with couplings, conical tightening elements, torque limiters, torque measurement devices and hydraulic accessories. They have couplers that can transmit torque up to 0.1 Nm to 1,000,000 Nm.



GRACO

Graco offers systems, products and technology that set the quality standards in fluid transfer and control solutions in a wide range. Graco provides powerful equipment also in construction sector with the application of top coat spraying, protective coating, paint circulation, lubrication, sealants and adhesives.



SITEMA

SITEMA, The only company worldwide specialized in the field of lock systems and linear brakes ; holds and locks loads in the axial direction.



DUFF NORTON

Working under the Columbus-McKinnon group which produces rotary connection elements, the company produces sealing elements and bearing materials with its own special method and serves the industry.



Representations



TURCK

TURCK

Managing to be an established, reliable and preferred brand in detection technologies for many years, Turck is one of the leading companies in its sector.



WITTENSTEIN

WITTENSTEIN

Being the manufacturer of low backlash, high accuracy and high efficiency planetary gearboxes that you need in power transmission systems, the company has a reputable place in its field almost anywhere in the world.



GATES

Gates makes a difference with its hydraulic hoses which passes the impact resistance test 2 times that of SAE standards, is half elastic, has an abrasion resistant coating and its hose sleeves which can be fitted without peeling, providing accurate sealing by locking and biting the wire.



ROTH

Producing quality products in hydraulic accumulator systems for many years under the name Bolenz&Schaefer, the company continues its activities under the ROTH Industries group. We are glad to offer you piston, bladder and diaphragm accumulators in a smooth and reliable manner.



Newly Produced

With our R&D department becoming active, we continue to add new products into our production in motion control systems according to the priorities of the sectoral areas and projects in which our production capability is strong.

Cartesian Robots

Linear cartesian systems with different capacities have been produced by our company for a long time. Designs for **4-axis cartesian robots with 6-12-25 and 50 kg capacity specific to sector needs and plastic injection sector which is an area open to development, and grippers specific to customers** are made.



Delta Robot

We offer Delta Robot systems based on parallel kinematics which we produced under the Tübitak project in 2011 either as unit products specific to customer demands or as complete solution with camera control system and conveyor systems.



Storage Shuttle Systems

With the need for physical space and development of software-based systems in logistics management, ASRS also grew in parallel. We produce shuttle systems for **active use of deep rack systems which allow more products to be stored in the same rack in vertical storage systems.**



Modules

In special machine manufacture, we produce linear modules and electromechanical cylinders specific to our customers with variable bearing and body systems based on its function on X,Y,Z, axes with ball screw, timing belt and gear rack drive.



Newly Produced



We further advance our production process, which we started in **2007 with hydraulic units, with the manufacture of products with high added value and no or little supply in the local market which are strong in terms of export.**

Hydraulic Servo Cylinder

Our cylinder production is already continuing with a capacity of more than 1,000 pieces per year. **With the production of servo cylinders** for which we have the development and details with the Tübitak supported TEYDEB project, we offer design and manufacture services to our customers for hydraulic servo cylinders that are accurate and work at high frequency.



Hydraulic Rotary Actuators

With the rotary actuators which we provide special design customized to needs and manufacture of in the range of 0-360 degrees, **we get rid of inefficient projects with hydraulic cylinders at low degrees.** With rotary actuators for which we created a standard product catalogue in the range of 500 Nm - 20,000 Nm, we started to provide services in general industry, mobile hydraulics, defense industry and marine applications.



Pressure Boosters

Project-specific design and manufacture of pressure boosters, which are required for using special liquids or **gases at a high pressure range driven by hydraulic systems, is carried out.**



Cylindrical Flow Dividers


Among these, the one with highest synchronization is the cylindrical flow dividers which are designed according to the number and volume of cylinders into which the oil will be distributed equally. **We manufacture cylindrical flow dividers specific to the project.**



Sectors and our applications

HKTM correctly identifies customer needs and demands with its specialists and experienced staff and produces reliable and economical turnkey solutions needed by the customers.

It uses its design and production experience gained through applications in various industries to meet customer needs and demands in the most accurate way possible.



Ship Construction and Yacht Sector Applications

- Hatch Cover Hydraulic Systems Split Barge
- Hydraulic Systems LCM Landing Ship
- Complete Hydraulic System




Food and Packaging Sector Applications

- Box Counting System
- Vacuum Pack Conveyor System
- Bread Crating and Palletizing System and Automation



Forging and Heavy Industry Sector Applications

- Induction Oven Press Feed Systems




Chemistry Sector Applications

- Magnetic Coupling Application With 100 Sealing




Mining Sector Applications

- Inclined Crane
- Frictional Resistance High Hydraulic Hoses
- Mine Crusher Automatic Lubrication System
- Mobile Sieve Automatic Lubrication System
- Tunnel Boring Machines Automatic Lubrication System
- Power Transmission Systems




Automotive Sector Applications

- 10 Axis Clamp Mounting Automation
- Exercise Press Hydraulics and Automation
- Vehicle Service Oil Tracking System
- Lug Nut Working Press




Medikal Sector Applications

- 9 Axis R-Ray Machine
- Acrylic Gear Transfer System



Pipe Sector Applications

- Hydro Test Hydraulic System
- U Press Hydraulic System



Glass Sector Applications

- 35 Axis Drilling Automation
- 3 Axis Glass Transfer System



Iron & Steel Sector Applications

- 15-200 Tons Arc & Ladle Furnace and CCM Hydraulic Systems
- Cutting Slitting Line Hydraulic Systems
- Profile Rail Rolling Mill Hydraulic Lubrication Systems
- Clay Gun Drill Hydraulic System
- Oscillation Hydraulic System and Cylinder
- Open Gear and Bearing Automatic Lubrication System
- Air-Oil Lubrication System
- Coil Rolling Mill Automatic Lubrication System
- Dummy Bar Hydraulic Crane
- Kishpit Plant Hydraulic System
- Furnace Top Hydraulic System
- Coal Injection Crushing Hydraulic Unit
- Agc Blocks
- Package Lifting Car Hydraulic System



Machine Production Sector Applications

- Servo & Linear Drive Systems
- Power Transmission Systems
- 8 Axis Molding Transfer System and Drive Groups
- Spring Compression Press Hydraulic System
- Fatigue Test Hydraulic System
- Furnace Cover Opening/Closing Hydraulic System
- Filter Press Hydraulic System
- Straightening Bench Hydraulic System



Tyre Sector Applications

- 45" - 65" Tyre Press Hydraulic Systems
- Tyre Test Systems Linear Motion Systems
- Tyre Preparation Press I/O Link Systems
- Tyre Preparation Group Hydraulic System
- Raw Tyre Hydraulic Systems
- 65" Tyre Press Automatic Lubrication System
- MOBILFiX Tyre Adjustment Tool
- Hydraulic System and Automation



Mobile Machine & Vehicle Applications

- Telescopic Crane Hydraulic Systems and Cylinders
- Helicopter Transport Vehicle Hydraulic System
- Drilling Machine Hydraulic System
- Garbage Collection and Grinding Tool Lubrication System
- Marble cutting tool with 11 meter blade
- Automatic Lubrication System
- Garbage Collection and Grinding Tool
- Hydraulic System and Automation



Aluminum Sector Applications

- Continuous Casting Machine Hydraulic Systems
- Foil Rolling Hydraulic Systems
- Extrusion Mold Polishing Machine
- 150-3250 Ton Extrusion Press Hydraulic Automation System
- Extrusion Mold Polishing Machine



White Appliances

- SBS Left Door Line Hydraulic Systems
- Chassis Body Line Automation
- Double Component Silicone Mixture and Dosing System
- Hinge Grouping Machine and Automation
- MFDC Welding Machines and Automation

hktm

İyi Mühendislik
444 4580

Hidropar | Hareket Kontrol Teknolojileri Merkezi A.Ş.

+90 444 4580
+90 262 643 84 14
info@hktm.com.tr

Gebze Plastikçiler OSB. İnönü Mah.
Cumhuriyet Cd. No.: 31 - 41400
Gebze / Kocaeli / TURKEY

