



# BATI GROUP OF SHIPPING COMPANIES

2021

# WHO ARE WE?

---

Established in 1992 in TURKEY

Headquarters is based in Istanbul

10 Branch Offices & 3 Warehouses

**Turkey:** Izmir, Mersin, Urfa, Bursa, Izmit, Gaziantep, Iskenderun, IST Airport, Ankara, Canakkale SeaPort, Derince

**Germany:** Berlin (Bati Logistics GmbH)

3 Liaison Offices (Seoul, South Korea & Zakho, Iraq & Constanta, Romania)

165 energetic, hardworking, intelligent, problem serving and friendly employees

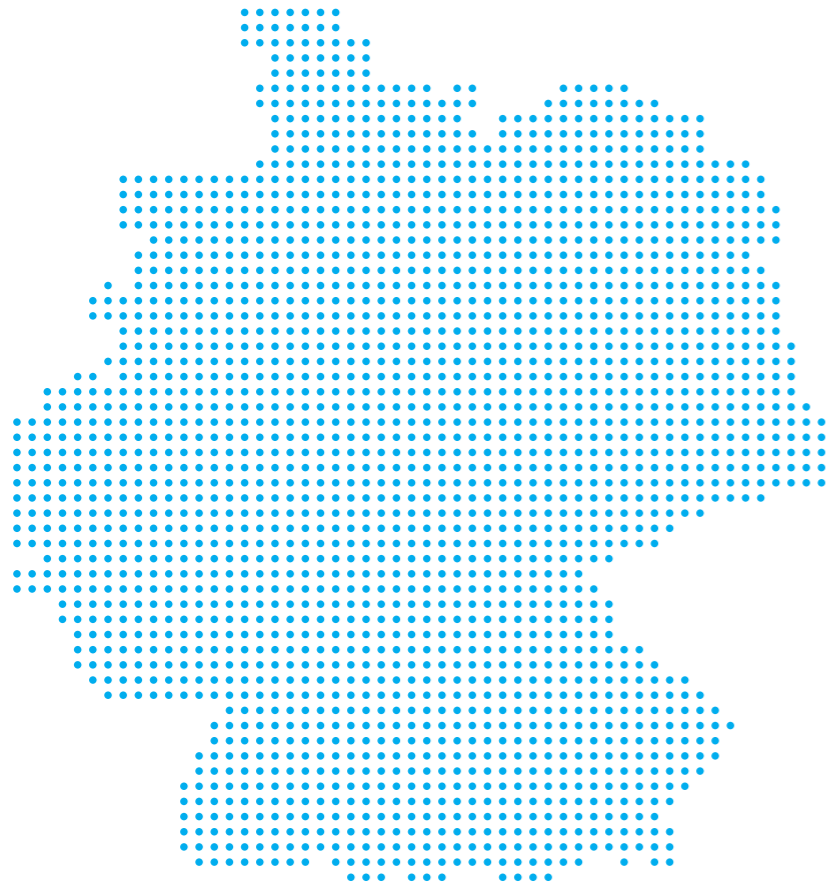
# LOCATIONS IN TURKEY

---

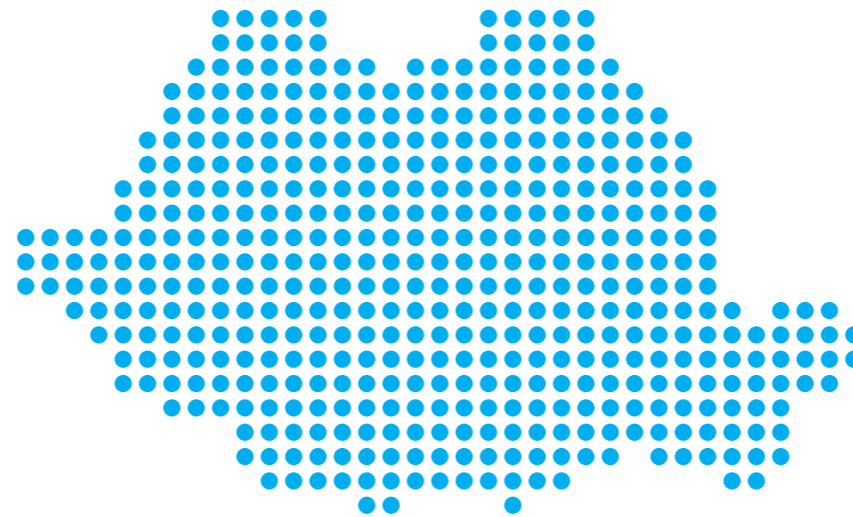


# FOREIGN OFFICES AND SISTER COMPANIES

---



**Berlin, GERMANY**  
BATI Logistics GmbH



**Constantza, ROMANIA**  
Port Stevedoring Office



**Seoul, SOUTH KOREA**  
Liason Office

**more to come...**





# SERVICES

---



Sea Freight ( FCL/ LCL)



Air Freight



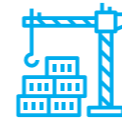
Rail Freight



Project Forwarding



Yacht Transportation



Inland Haulage



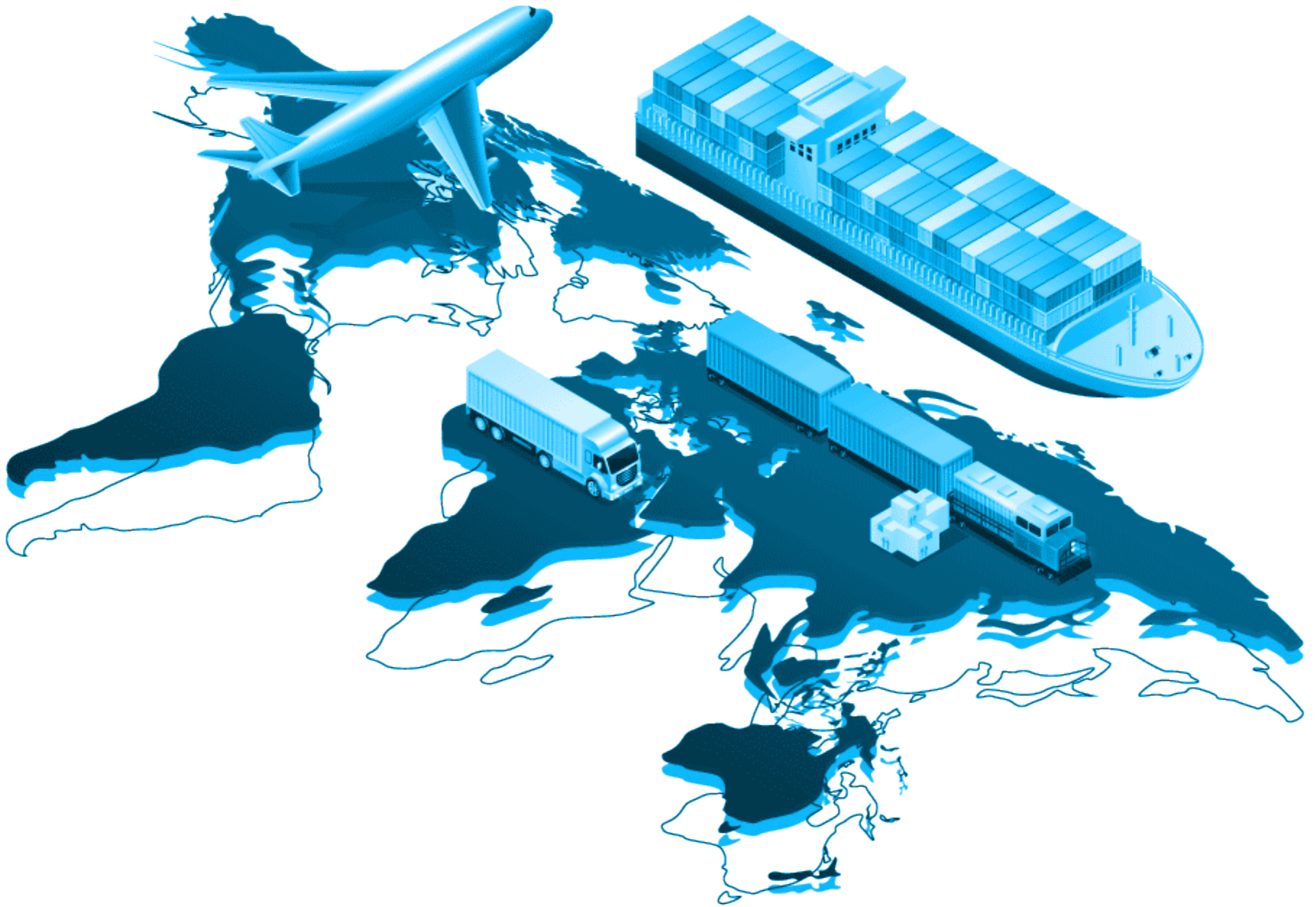
Storage



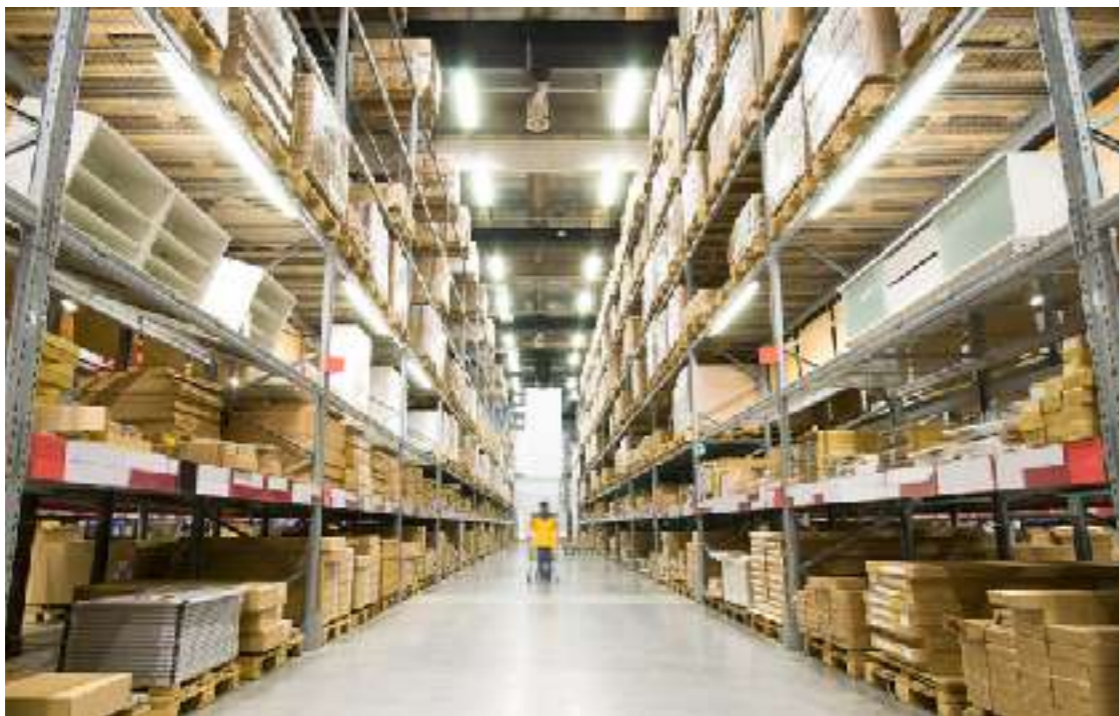
Bulk and Chemical Logistics



Chartering & Liner Agency







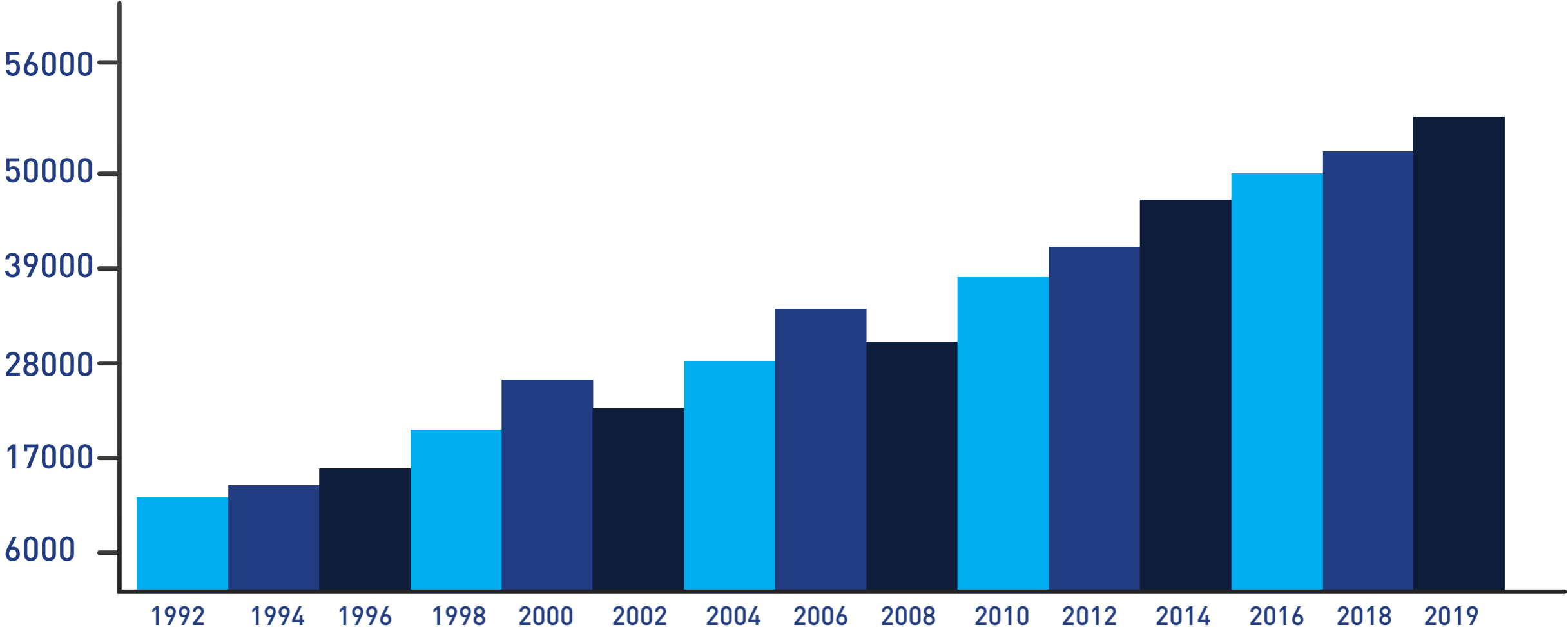
# SEA FREIGHT

---

- 56 500 Teu's handled in 2020
- 4 364 B/L's were printed.
- 5 712 D/O's were prepared.
- VIP + Tier 1 customer for many shipping lines in Turkey
- Timely and accurate documentation and information flow

# Yearly Teu's

---



# AIR FREIGHT

---

- 3.000 EXPORT tons in 2020
- 34.000 IMPORT tons in 2020
- IATA licensed since 1995
- All Int' Airports are covered (IST, SAW, ADB, ESB)
- Pick ups and Door deliveries.

# FLEXITANK

---

- Representative of Bulk Liquids India.
- Over 2000 Teu's every year.
- Olive oil, lub oil, D.O.P.(Diocetyl Phthalate), fatty acid and etc.
- 2 warehouses with our own team.
- Derince, Izmit and Izmir.ies.

# TRANSIT CORRIDORS

---

- MERSIN - IRAQ transit custom clearance
- MARCAS line
- Reach to CIS



# MERSIN TRANSIT CLEARANCE

---

## GATEWAY TO

- Erbil
- Mosoul
- Suleymaniah
- Kerkuk
- Zakho

## As well as

- Turkmabashi
- Baku



# MARCAS LINE

---

Bi-weekly liner service from  
Derince, Constanza and Varna  
to the Caspian Sea

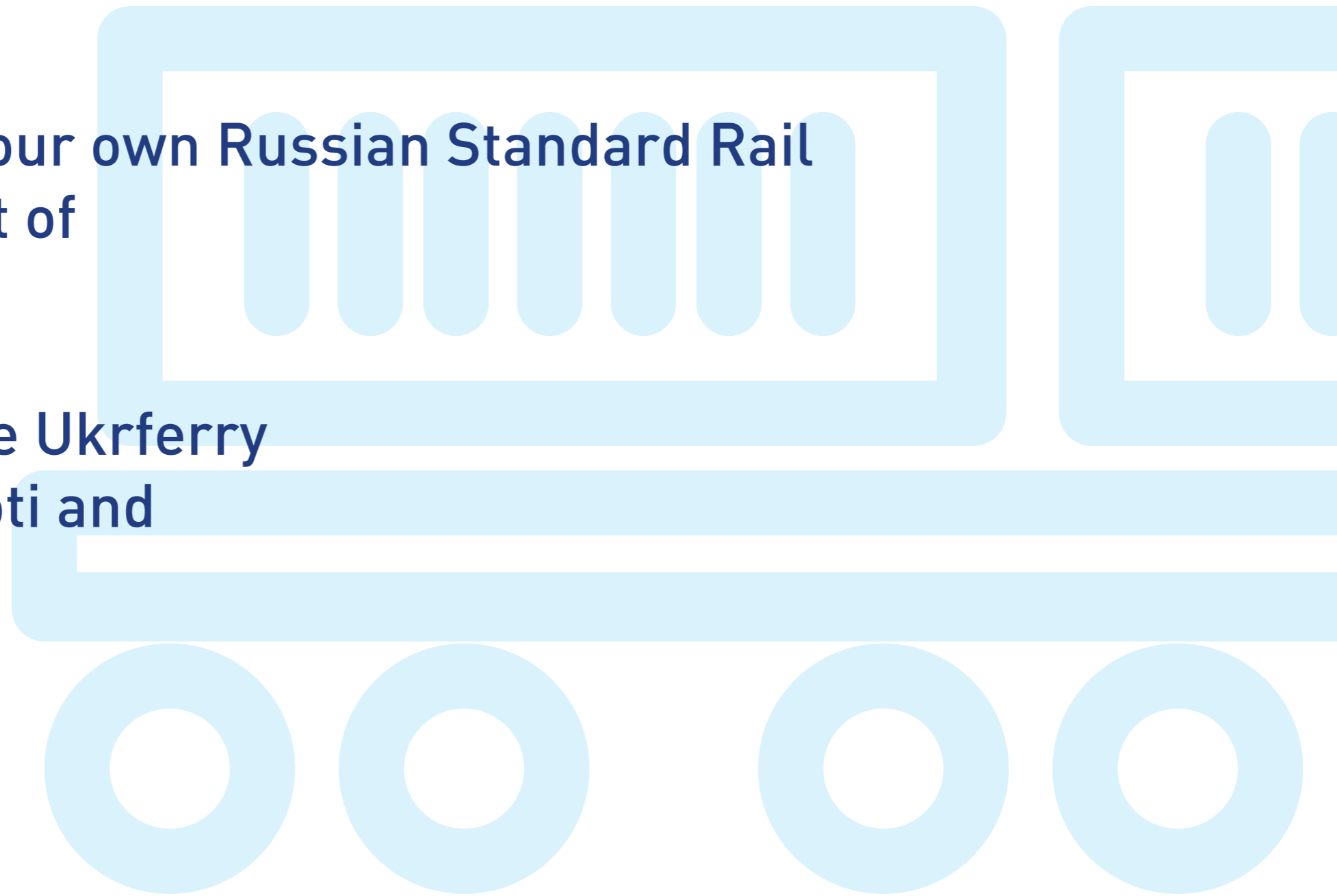




# RAIL FREIGHT

---

- Established our own Russian Standard Rail Roads in port of Derince.
- Operating the Ukrferry vessels to Poti and Ilichevsky.



# REACH TO C.I.S.

---



# YATCH TRANSPORTATION

---

- Yatch Transportation
  - Inland Transportation
  - Custom Clearance
  - Warehousing
  - Insurance
  - Shrink Wrapping and Wintering
  - Lashing and Securing
  - Towing Services
  - Diving Services
  - Skipping Services
- 
- A faint, light blue background illustration featuring a yacht on the left and a calculator on the right. The yacht is shown from a side profile, and the calculator is a standard desktop-style calculator with a display screen and a grid of buttons. The lines are thin and stylized.

# ROLLDOCK TURKEY

---

**BATI GROUP** has been appointed as the commercial agent of RollDock in Turkey



# **PETERS & MAY TURKEY**

---

**BATI GROUP has been appointed as the agent of PETERS & MAY in Turkey...**

**Peters & May provide world leading global yacht transport, car transport, cargo shipping and marine logistics for brokers, manufacturers & private individuals.**

# PROJECTS

---

- Heavy Lifting
- Over Dimensional
- Over Weight
- Planing
- Engineering



# ALSTOM Transformer

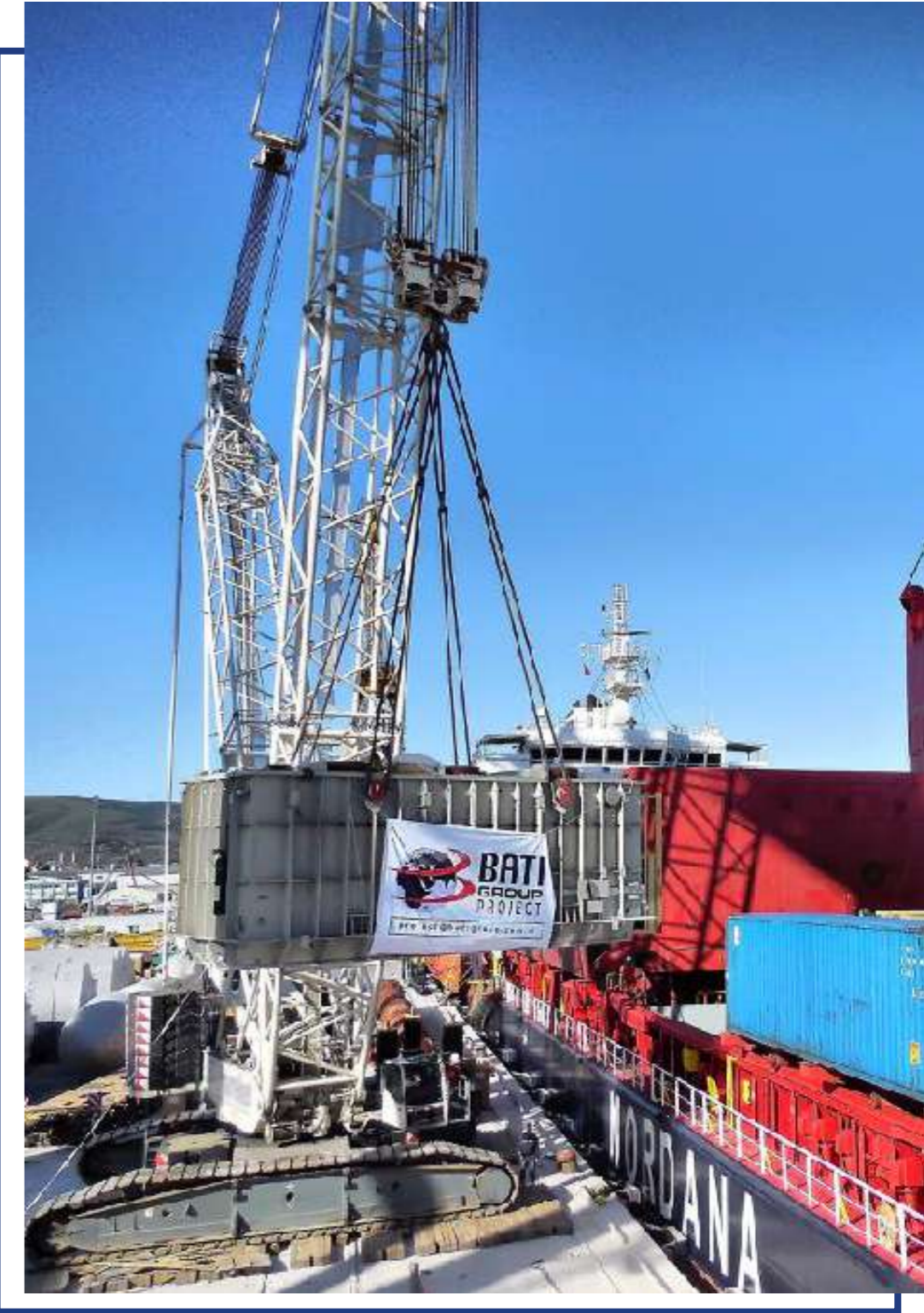
---

**Volume: 1500 cbm**

**Weight: 308 tons**

**Dimension:**

**11.1/4.8/4.3**



# IHI Izmit Bay Bridge

---

**Volume: 2100 cbm**

**Weight: 9 - 20 tons**

**Dimension: 12 / 2.5 / 3**





# ERDEMIR Erenco Air Seperation Plant

---

**Volume: 6930 cbm**

**Weight: 799,6 tons**

**Dimension: 30 / 8 / 7.8**



# ZORLU Geothermal Powerplant

---

**Volume: 8000 cbm**

**Weight: 1345,6 tons**



# Yacht Transportation

**Weight: 720 tons**

**Dimension: 68 meters**



# Technology

---

Magellan Software System is integrated using EDI connectivity which extends to shipping line and haulier connectivity using INTTRA and other cloud-based technology

- Door to door supply chain visibility
- Cargo Track and Trace: Our web-based Track & Trace system allows you to stay on top of critical shipments and monitor freight movements in real time
- EDI connection to Intrra and Champ Traxon
- Monitoring and Analysing global HSE condition

**Soon! Mobile Application for IOS, Android & Windows devices**

# Certificates

---

- ISO 9001 : 2008
- ISO 14001 : 2004
- OHSAS 18001 : 2007
- TEID
- HSSE Policy
- Protocol
- BIMCO
- IATA
- R2
- FIATA
- ITCO

Quality Certificate

Environmental Management System Certificates  
2007 Occupational Health and Safety Management  
Ethics and Reputation Society  
Health, Safety Security and Environment

Turkey Road Transport Authorisation

International Tank Container Organisation

# Network & Memberships

---

- PROJECT CARGO NETWORK
- GPLN
- XLP
- CLC PROJECTS
- WCA PROJECTS
- IFA
- SECURITY CARGO NETWORK
- MARCO POLO LINE GROUP
- EPCA

# European Logistics Central Station

---

**BATI Logistics GmbH**  
**[www.batilogistics.de](http://www.batilogistics.de)**

Nonnendamm 33 , 13627 Berlin  
Germany

Tel: +49 (30) 9451 3200

E-Mail: [info@batilogistics.de](mailto:info@batilogistics.de)

Handelsregister Charlottenburg  
Berlin, Nr.: HRB

184136 B

Umsatzsteuer-ID: DE 310801242

Steuer Nr.: 27/217/50071



---

Beyond Waves and Clouds / Since 1992

---